

PLATE I



(Photo: Crown copyright reserved.)

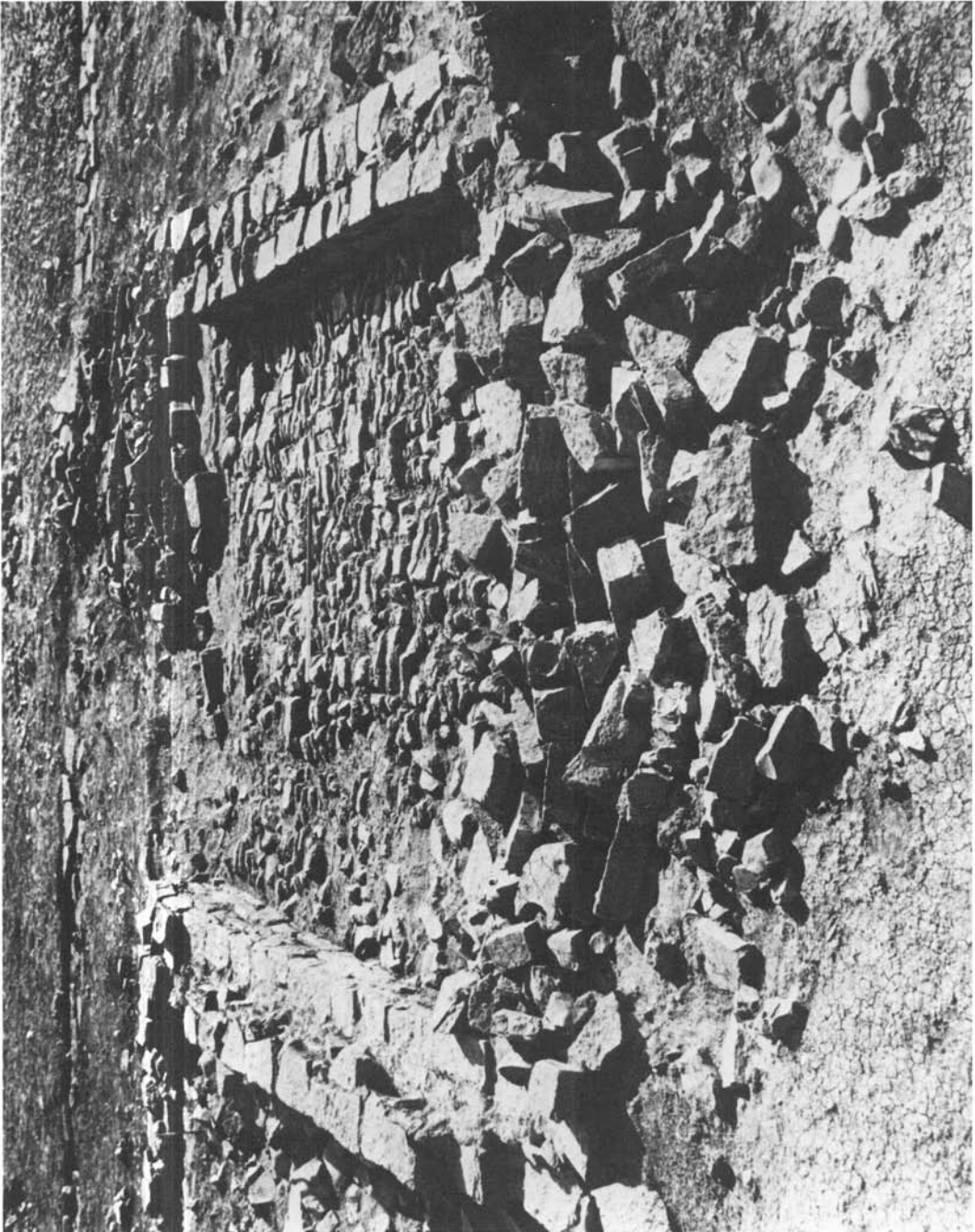
A. Auchendavy fort: seen from the north, July 1953. (p. 31)



(Photo: copyright University of Cambridge)

B. Auchendavy fort: seen from the north, July 1961. (p. 31)

PLATE II



(Photo: W. J. Lewis)

Room G showing the rubble of the N. Wall. (p. 64).

PLATE III



(Photo: W. J. Lewis)

A. The original foundation trench for the wall between Rooms O and P. (p. 67).



(Photo: W. J. Lewis)

B. The collapsed S. Wall of Room G. (p. 68).

PLATE IV



(Photo: W. J. Lewis)

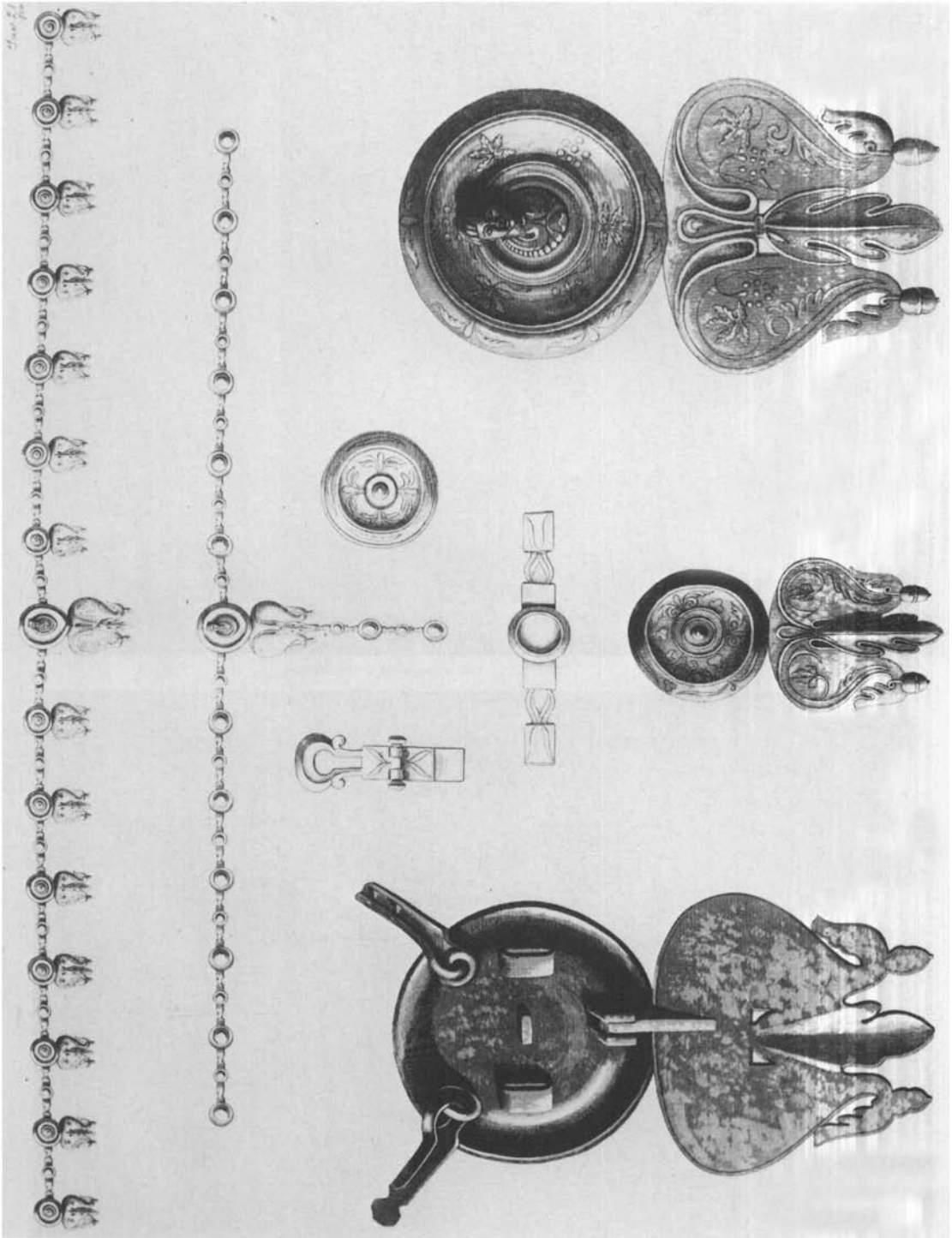
A. The terrace wall showing the collapsed masonry over the builders' levels. (p. 68).



(Photo: W. J. Lewis)

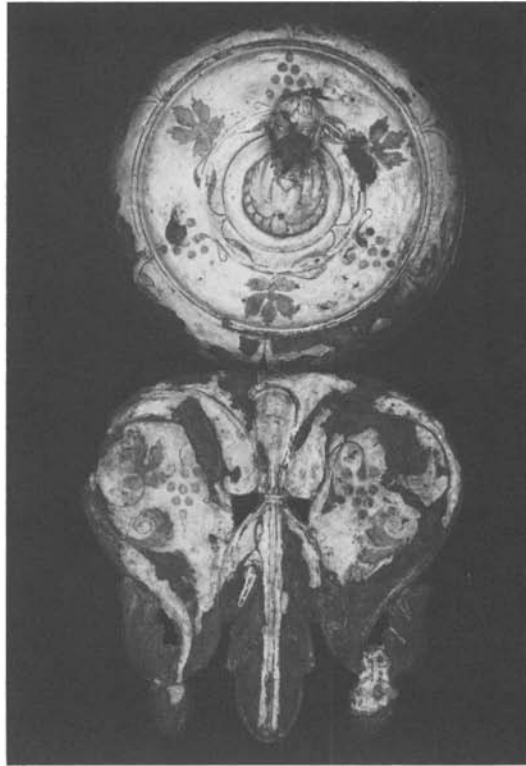
B. The terrace. (p. 68).

PLATE V



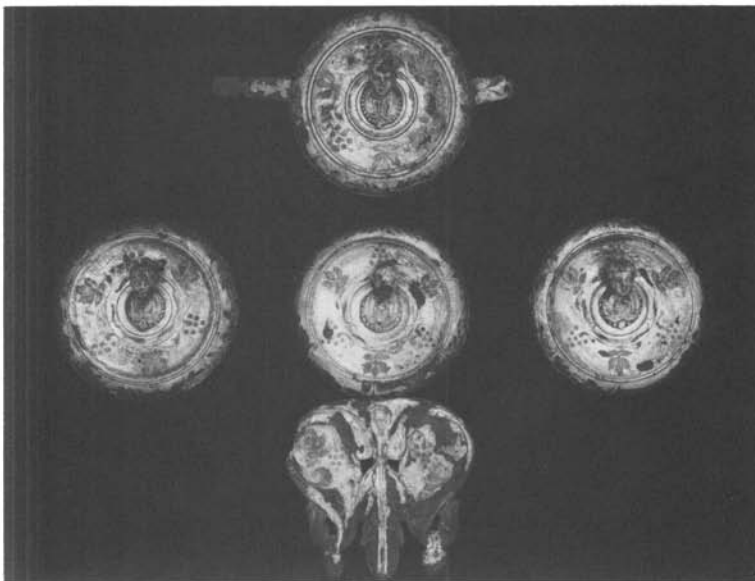
E. Braun's reconstruction drawing. (p. 142).

PLATE VI



(Photo: copyright British Museum)

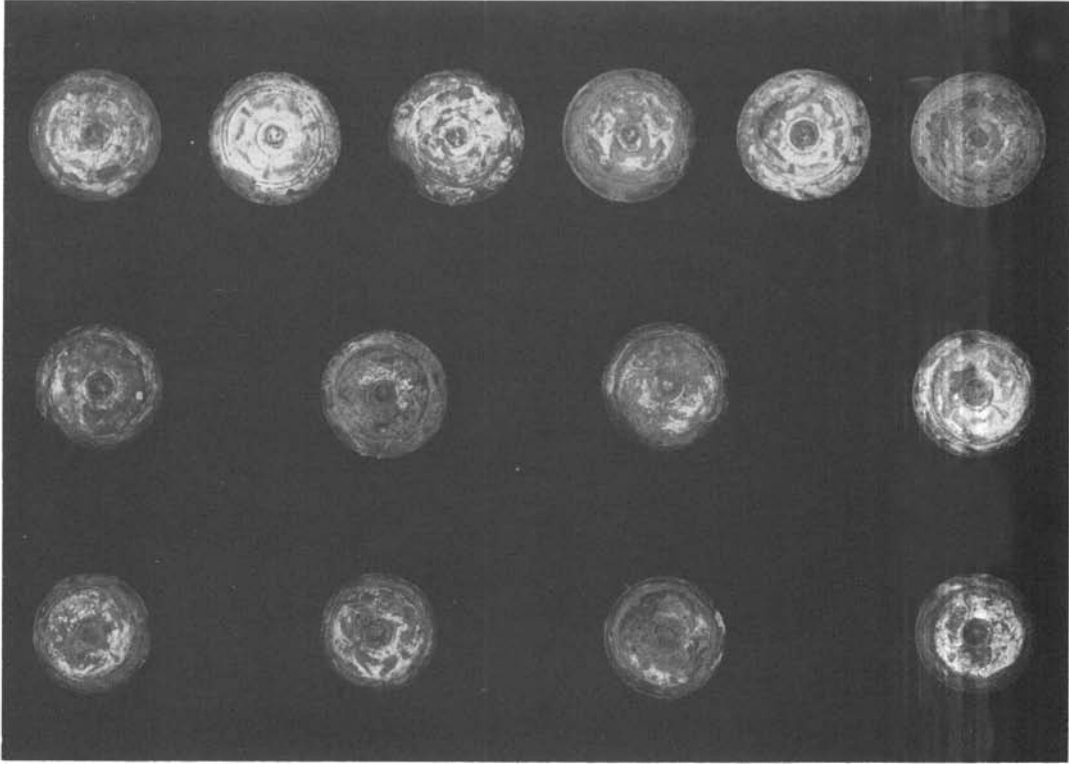
A. Large roundel and pendant: A1. (p. 143).



(Photo: copyright British Museum)

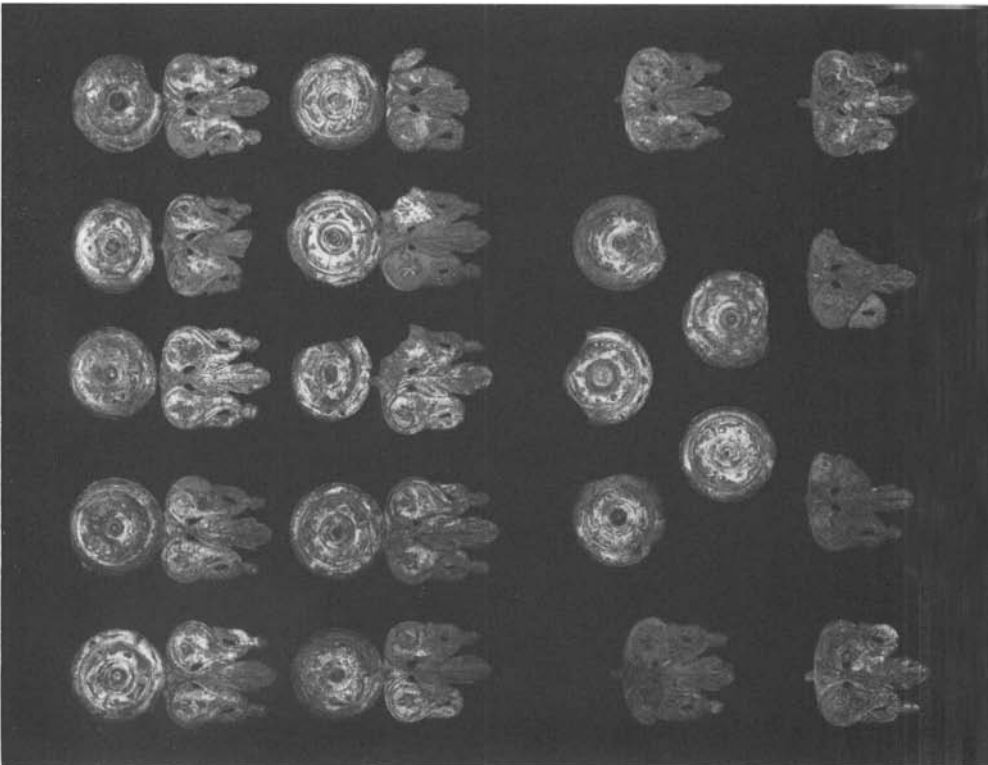
B. Large roundels: A1-4. (p. 143).

PLATE VII



(Photo: copyright British Museum)

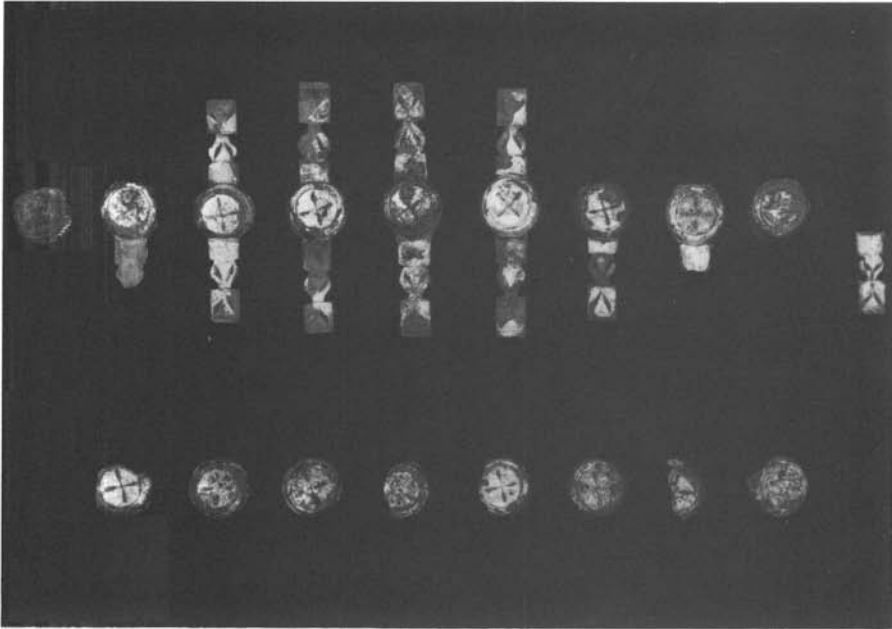
B. Small unhinged roundels: CI, 26–CIII, 39. (p. 148).



(Photo: copyright British Museum)

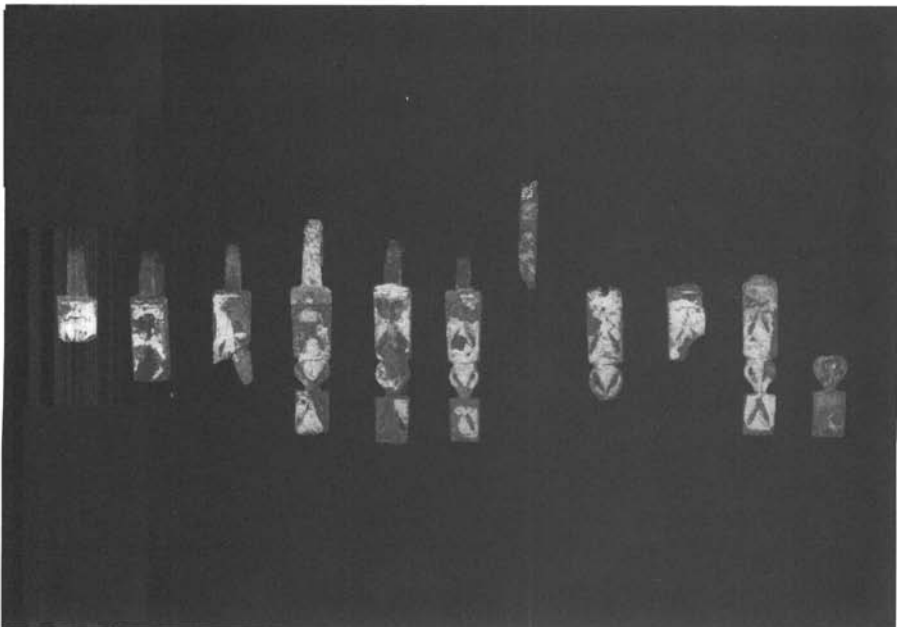
A. Lesser roundels and pendants: B5–25. (p. 146).

PLATE VIII



(Photo: copyright British Museum)

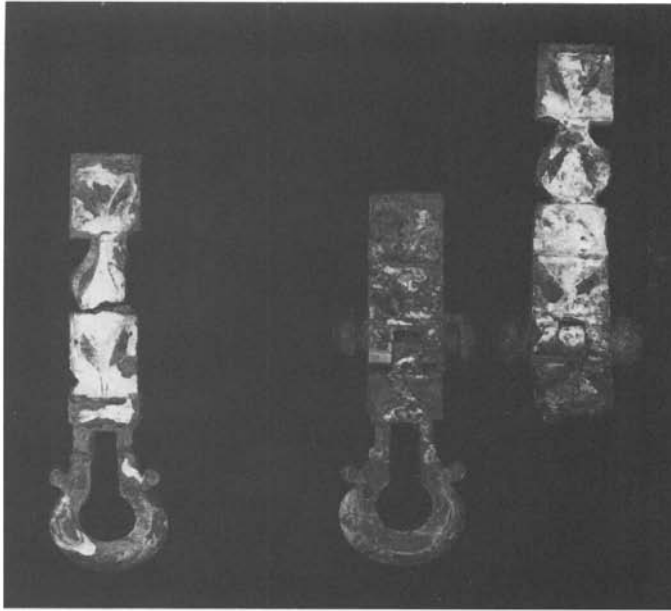
A. Long flat elements and circular studs: D40–59. (p. 149).



(Photo: copyright British Museum)

B. Clips for attaching large roundels: E60–70. (p. 149).

PLATE IX



(Photo: copyright British Museum)

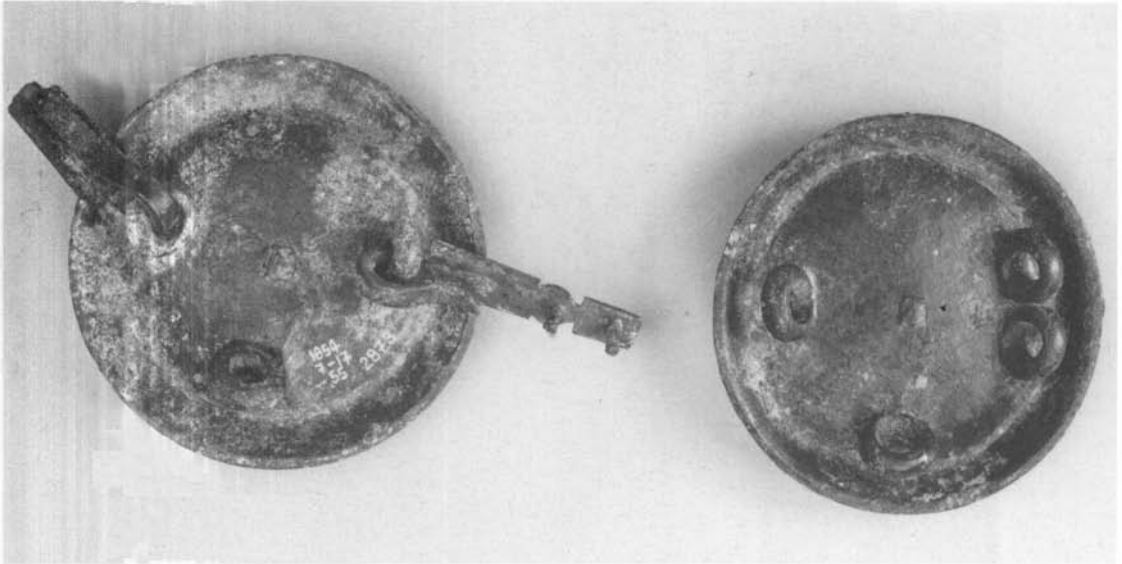
A. Buckle attachments: F71-73. (p. 149).



(Photo: copyright British Museum)

B. Reverse of large roundel and pendant: A1. (p. 143).

PLATE X



(Photo: copyright British Museum)

A. Reverse of large roundels: A2 and A4. (p. 143)



(Photo: copyright British Museum)

B. Reverse of lesser roundel: B22. (p. 148).

PLATE XI



(Photo: courtesy of Rheinisches Bildarchiv)

A. Tombstone of Marcus Sacrilus. (p. 151).



(Photo: copyright British Museum)

B. PLINIO PRAEF(ECTO) EQ(VITUM) inscribed on the front of the large roundel: A3. (p. 154).

PLATE XII



(Photo: Philip Compton)

A. The bovid-headed mortar from the 'Lincolnshire' cosmetic set. (Cat. No. 4). (p. 168).



(Photo: Victor Bowley)

B. The Hockwold bronze mortar with duck- and ox-head terminals. (Cat. No. 59). (p. 168).

PLATE XIII



(Photo: copyright University of Cambridge)

Oblique aerial photograph of the site, looking north. (p. 210).

PLATE XIV

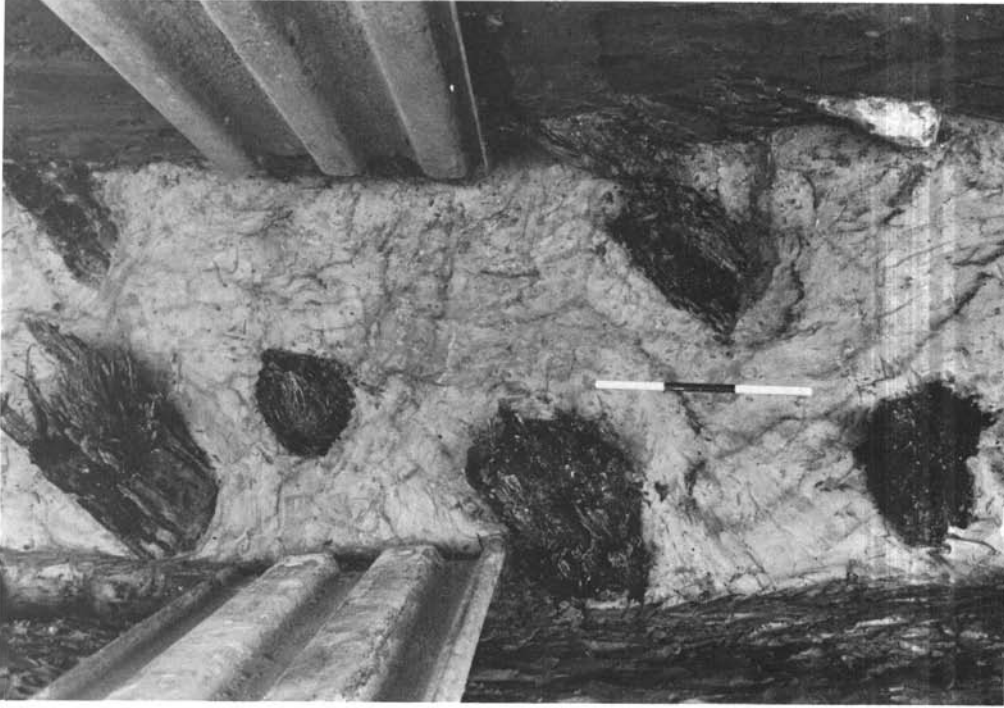


A. View of the upslope end of Trench 101 showing the undisturbed timber piles (the scale rod is divided into 50 cm lengths). (p. 216).



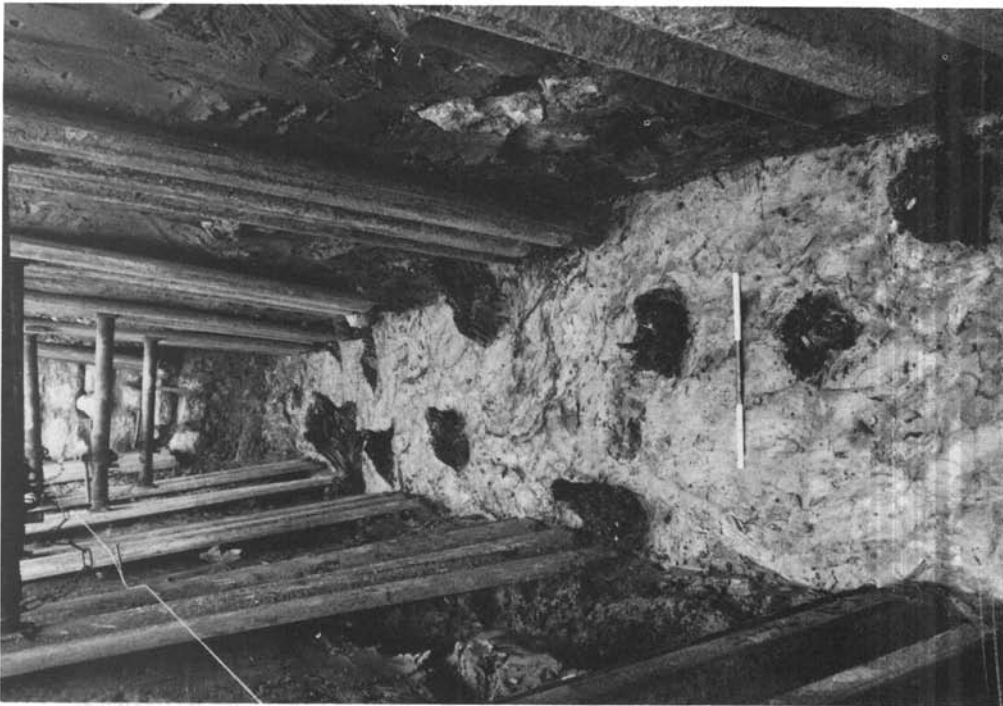
B. View of the downslope end of Trench 101 showing displaced, sub-horizontal timber piles and the displaced north wall (the scale rod is divided into 50 cm lengths). (p. 216).

PLATE XV



(Photo: M. Demisson)

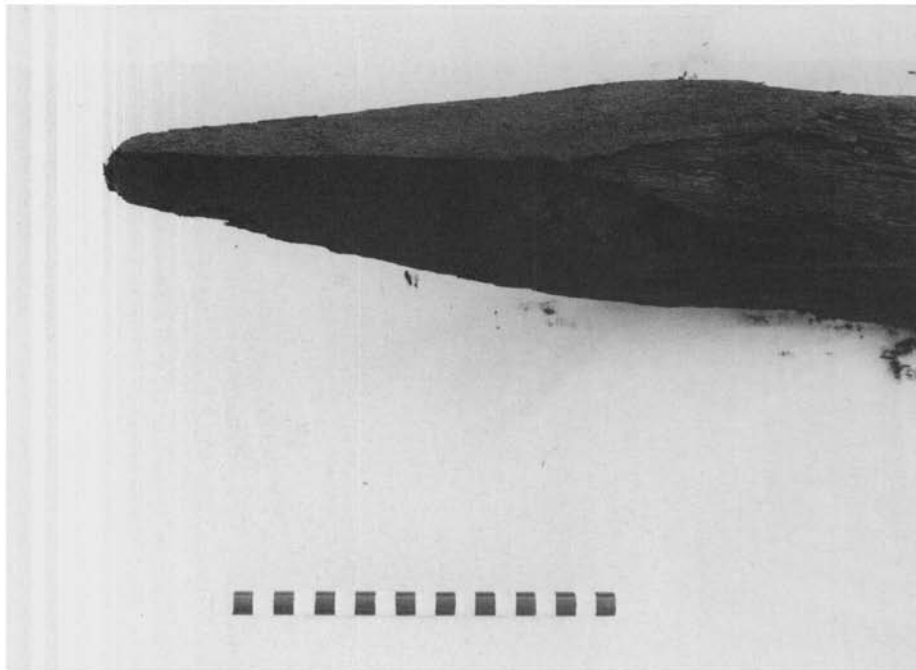
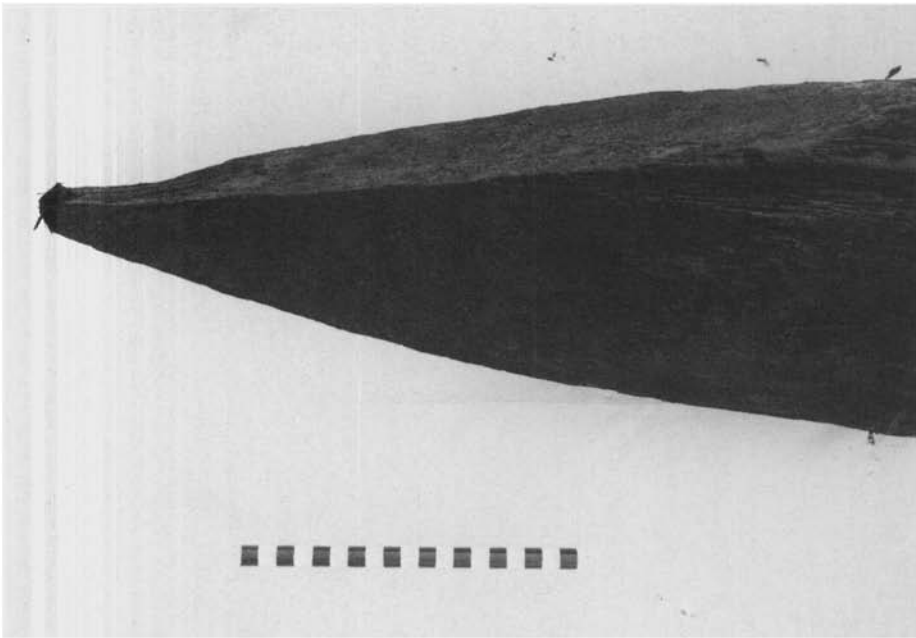
B. Downward view of timber piles (Nos. 39–44) in floor of Trench 105 (the scale rod is divided into 10 cm lengths). (p. 220).



(Photo: M. Demisson)

A. General view of Trench 105, looking south-east (the scale rod is divided into 10 cm lengths). (p. 219).

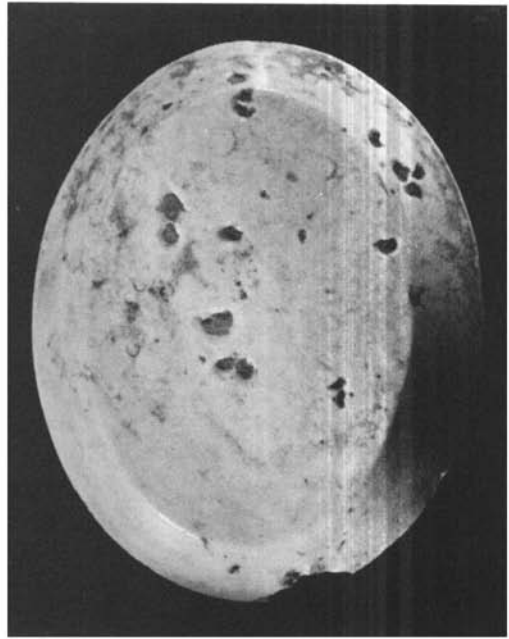
PLATE XVI



(Photo: M. Dennison)

Detail of the points of two of the timber piles recovered from Trench 101 (the scale rod is divided into centimetres). A. (upper) is pile No. 22; B. (lower) is pile No. 23. (p. 225).

PLATE XVII



C

(Photos: Institute of Archaeology, London)

Inscribed Intaglio from Braintree, Essex. A. Front; B. Back;
C. Impression. (p. 242).

PLATE XVIII



(Photos: Martin Andrews)

Decorative Bronze Appliqué from Silchester. (p. 242).

PLATE XIX



(Photos: Birmingham Museum and Art Gallery)

A Bronze Lion from Hanbury, Worcs. Scale 2:1. (p. 244)

PLATE XX



(Photo: West Air Photography)

A. Earthworks of a Romano-British Farmstead on Dinas Powys Common. (p. 246).



(Photo: West Air Photography)

B. A settlement of probable Romano-British date at, Burdonshill, Wenvoe. (p. 246).

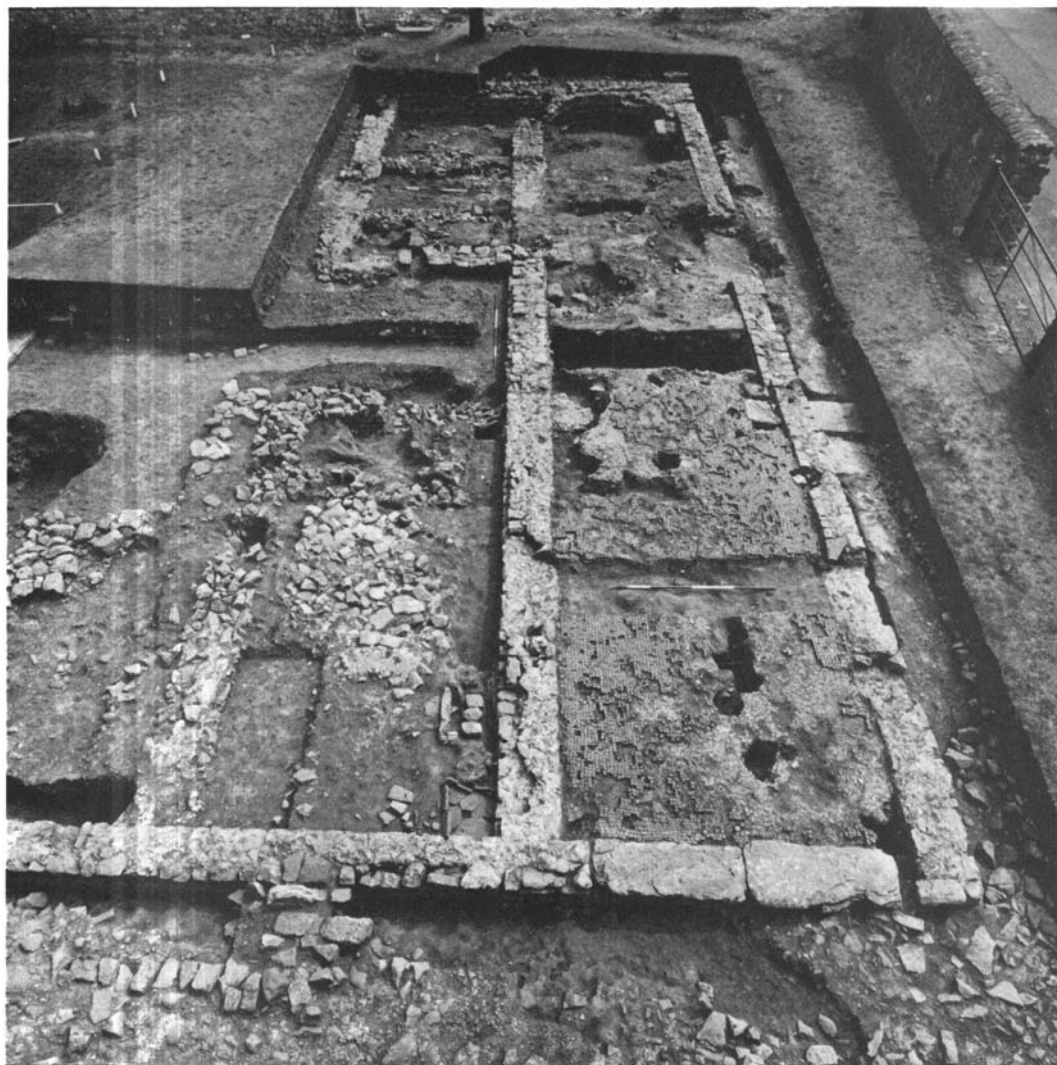
PLATE XXI



(Photo: West Air Photography)

Lyncheted fields apparently cut by the line of the Roman road (A48) west of Cowbridge, Glamorgan. (p. 246).

PLATE XXII



(Photo: R. J. Brewer)

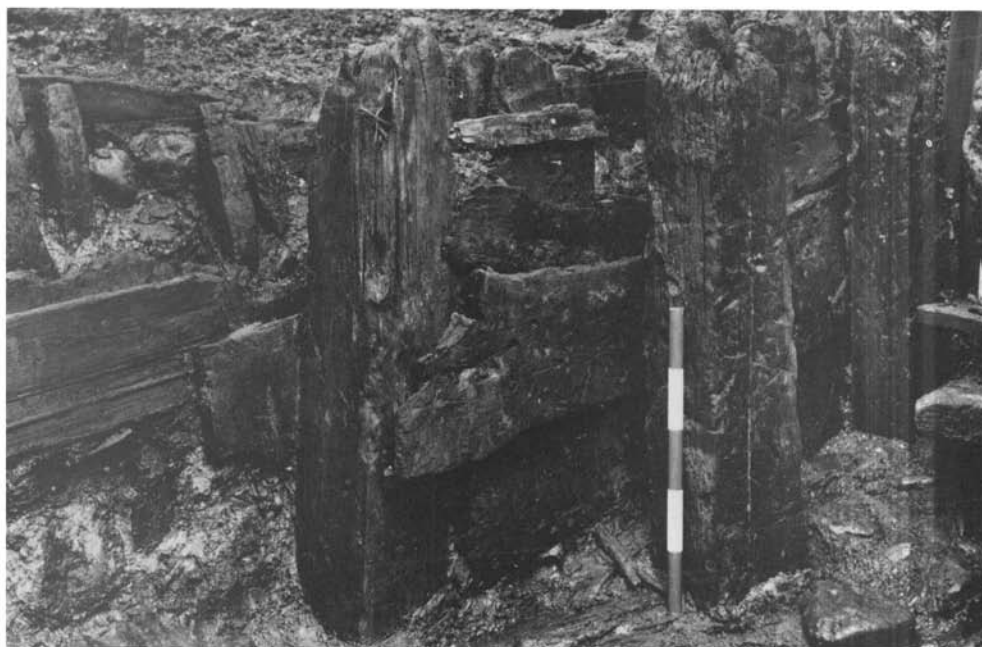
Caerwent: entrance-hall from the main street to the Romano-Celtic temple temenos, looking east (p. 260).

PLATE XXIII



(Photo: M. S. Duffy)

A. York, Tanner Row: early second-century timber structures and drain (p. 279).



(Photo: M. S. Duffy)

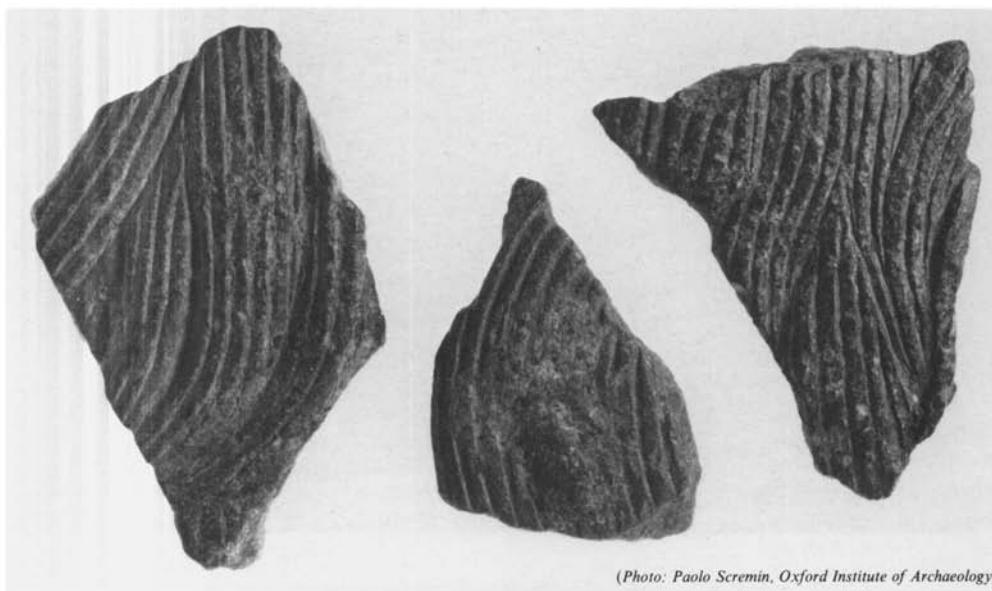
B. York, Tanner Row: post-and-plank second-century timber structures (p. 279).

PLATE XXIV



(Photo: K. Camidge)

A. Lincoln, Michaelgate: ?second-century stepped street on steep hillside (p. 283).



(Photo: Paolo Scremin, Oxford Institute of Archaeology)

B. Billingford, Norfolk: fragments of bronze head of the Julio-Claudian period (p. 293). Scale, 1:5:1.

PLATE XXV



(Photo: J. Bailey)

A. London, Billingsgate Lorry Park: lead sealing depicting Britannia (p. 296). Scale, 3·75:1



(Photo: B. Stocker)

B. Upper Deal, Kent: chalk figurine (p. 316). Height 18·5 cm.

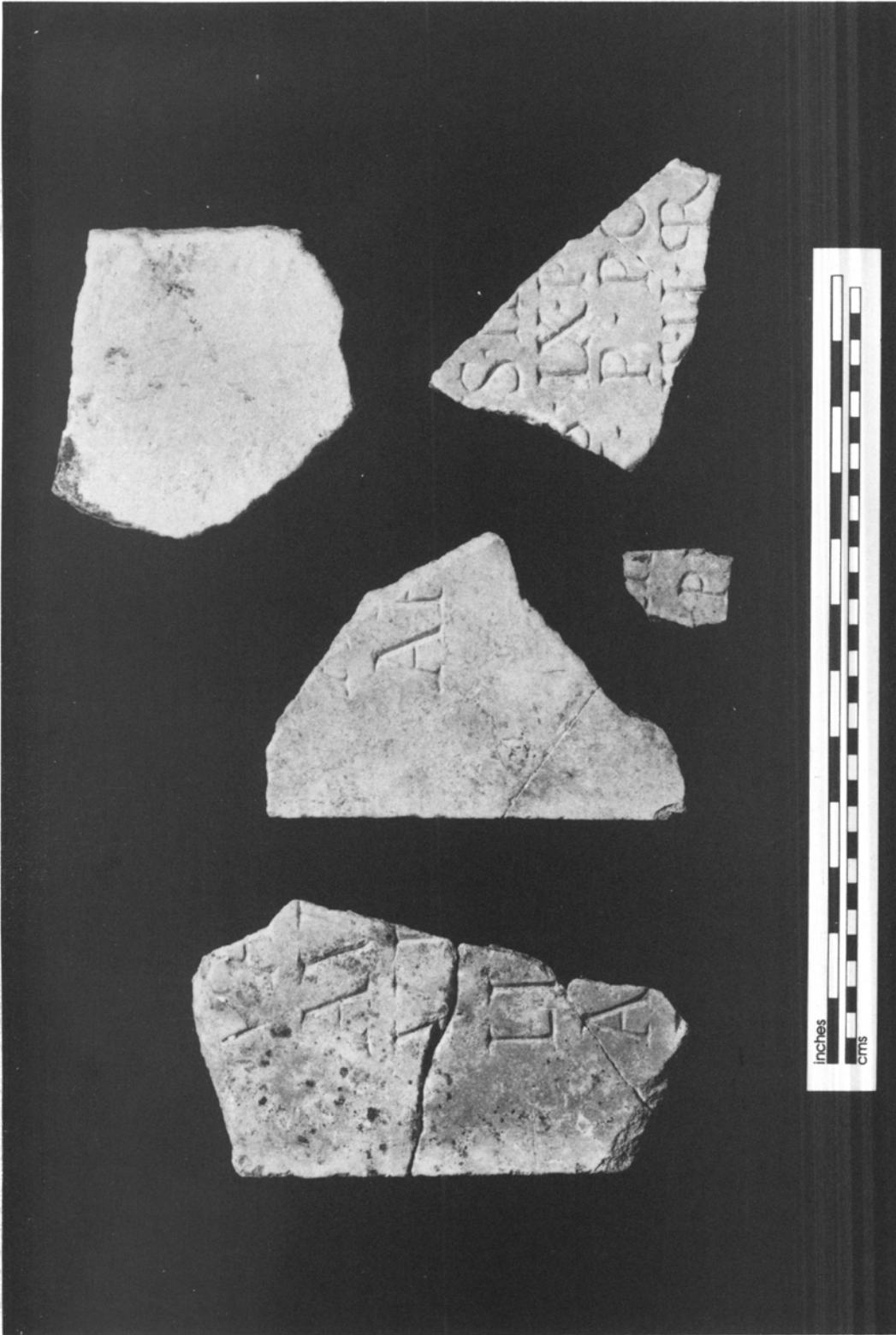
PLATE XXVI



(Photo: T. Hurst, copyright Museum of London)

Winchester Palace, Southwark, London: marble inscription (p. 317, No. 1).
Fragments (a) top, and (c)–(g) below. Width of Frag. (a) 0.315 m.

PLATE XXVII



(Photo: T. Hurst, copyright Museum of London)

Winchester Palace, Southwark, London: marble inscription (p.317, No. 1).
Fragments (b) left and centre, (j) uninscribed top right, and (i) and (h) bottom right.

PLATE XXVIII



(Photo: Alex Turner)

Wonston, Hants.: milestone (p. 324, No. 3). Photographic scale = 16 cm.

