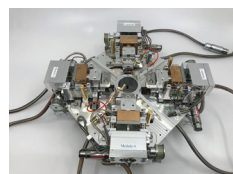


ProductNews

BIAX-Module for SEM or Benchtop



The load-frame mechanics of the BIAX module are designed for tensile or compression testing of samples along two axes ($\pm xy$). The module design allows all four grips to be controlled individually. For each axis, a load cell and displacement measuring system transmit live data to the

advanced (DDS-3+ controller) and supplied software (MDS). The MDS software offers all functions for the control, acquisition, and storage of experiment data and parameters.

Kammrath Weiss Tech.
www.kammrath-weiss.com/en

SPECTRO Analytical Instruments Introduces the Eighth Generation of SPECTROMAXx with iCAL 2.0 ARC/SPARK OES Analyzer



SPECTROMAXx has been improved with innovative capabilities and advancements in performance to achieve fast, accurate elemental analysis precisely tuned for material control and foundry applications. SPECTROMAXx is an industry leader with more than 13,000 installations. It

features outstanding speed, simple standardization, reliable and accurate results, minimal gas consumption, and intelligent elemental analysis of incoming source materials for in-process testing and traceability.

Spectro Analytical Instruments
www.spectro.com

ibidi 18 Well μ -slide Plates for Cell Culture and High-Resolution Microscopy



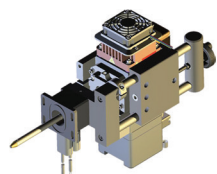
POLYMER
COVERSLIP

Perform high-resolution cost-effective cell culture experiments with ibidi's latest innovative labware technology, the μ -Slide 18-well family of cell culture plates. The thin ibidi polymer coverslip bottom allows for excellent cell adhesion onto the tissue

culture-treated surface. The high optical quality is suited for a variety of microscopy techniques, including wide-field fluorescence, confocal microscopy, and DIC. Request free samples at ibidi.com.

ibidi
www.ibidi.com

10-Micron XRF Addition for the Scanning Electron Microscope



Micro X-ray Fluorescence Systems, LLC now offers two new products to add Micro XRF to the SEM community. The "XR Series" offers an economical approach for XRF in the SEM. This "collimated" version produces excitation areas around 200 microns to 25 mm. The "fleX-Beam" is a polycapillary source with as small as 10-micron excitation at the sample surface. Polycapillary optics offer the "hottest" X-ray sources outside of a synchrotron.

Micro X-ray Fluorescence Systems, LLC
www.uxrf.net

Direct Electron's New DE-FreeScan



Direct Electron now offers a customizable scan generator for advanced STEM applications that supports a wide variety of scan patterns, including snake, spiral, alternating rows, checkerboard, and subsampled. The scan generator synchronizes with Direct Electron's DE-16 direct detection camera to enable 4D-STEM and ptychography and

enables compressive sensing STEM techniques for high-speed or low-dose STEM applications. The DE-FreeScan is also compatible with conventional STEM detectors (for example, BF, ADF, HAADF, etc.).

Direct Electron
www.directelectron.com

Excelitas Technologies New Broad-Spectrum LED Illumination System

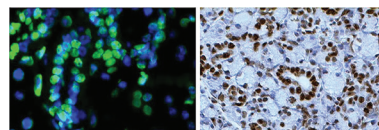


The X-Cite XYLIIS for fluorescence microscopy features LaserLED Hybrid Drive[®] and offers broad-spectrum output from 360–750 nm for exciting an extended range of fluorophores, with the advantages and simplicity of using LEDs. XYLIIS' enhanced LED coverage from one end of the light spectrum to the other closely matches the output of a mercury

arc lamp while eliminating the need for bulb replacement. Its 365 nm spectral peak fits perfectly with the narrow DAPI filter sets that are standard in research microscopes.

Excelitas Technologies
www.excelitas.com

ABP Biosciences Cell Apoptosis Assays



ABP Biosciences Annexin V Binding Assay kits provide quick and reliable detection methods for studying the externalization

of phosphatidylserine in apoptotic cells. Available kits include the caspase activity assay for live and dead cells, the mitochondrial membrane potential assay for cell death, and TUNEL assays that provide quick and reliable detection methods for studying *in situ* apoptotic DNA fragmentation.

ABP Biosciences
www.abpbio.com

Olympus scanR Modular High-Content Screening Station



The new scanR system provides automated image acquisition and data analysis of biological samples through deep-learning technology. This screening system accommodates multi-well plates and custom-built arrays,

imaging of fixed and live cells for quantitative imaging and analysis, and reduced photobleaching to improve throughput and longer periods of observation with reduced loss of cell viability.

Olympus
www.olympus-lifescience.com

Hummingbird Scientific Launches 5 New *In situ* TEM Products

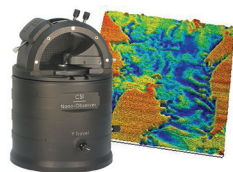


New Hummingbird Scientific TEM sample holders, including the optical liquid-electrochemistry holder, cryo-biasing holder, new double-tilt

MEMS biasing+heating sample holder, vacuum/inert gas transfer biasing holder, and the generation V bulk liquid-electrochemistry holder, have been released. These products improve the Hummingbird Scientific line of *in situ* TEM sample holders.

Hummingbird Scientific
<http://hummingbirdscientific.com>

Concept Scientific Instruments Introduces the Soft IC Mode for AFM



The new Soft IC Mode for off-resonance AFM imaging is a solution for delicate samples. Compatible with mechanical, thermal, and electrical modes, Soft IC provides topography measurements (DNA Circle: Soft IC, $K = 0.2$ nm), mechanical measurements (stiffness

and adhesion mapping), Soft SThM (temperature and thermal conductivity), and Soft ResiScope (resistance and current from 10^2 to 10^{12} ohms).

Concept Scientific Instruments
www.csinstruments.eu

BioTek Cytation 7 Cell Imaging Multi-Mode Reader



BioTek's new Cytation™ 7 Cell Imaging Multi-Mode Reader combines automated digital upright and inverted wide-field microscopy with monochromator-based multi-mode microplate reading. The inverted microscope provides $1.25\times$ to $60\times$

magnification in fluorescence, brightfield, and color brightfield, while the upright microscope enables other common applications, including ELISpot, slide scanning, and ROI detection.

BioTek
www.biotek.com

Andor Imaging Provides Super-Resolution Microscopy for under \$30,000



The SRRF-Stream is a new real-time super-resolution microscopy accessory that operates exclusively with Andor's iXon Life and iXon Ultra EMCCD cameras. The SRRF-Stream provides real-time enhanced workflow with conventional fluorophores and up to $2\times$ resolution enhancement.

Samples can be prepared by simple labeling, and no photo-switching is required.

Andor Imaging
<https://andor.oxinst.com>

Advanced Photonix Introduces Non-Contact, Optical Analog Angular Position Sensor

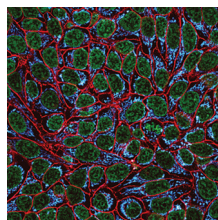


Advanced Photonix has released a breakthrough position sensor that provides a continuous analog voltage output that is ratio-metric to the angular position of the sensor shaft, making it ideal for industrial processes and aircraft control surface applications. The contactless device provides a solution to challenges like contact wear, vibration

bouncing, and sliding contacts arcing. API's sensor is immune to magnetic interference, with multiple interfaces possible. It features an analog continuous linear signal and simplified interface with an external control system.

Advanced Photonix, Inc.
www.advancedphotonix.com

Biotium Provides Unique Fluorescent Reagents that Drive Scientific Discovery



Biotium provides several cell-imaging kits, including organelle stains for mitochondria, lysosomes, vesicles, cell surfaces, and the cytoskeleton in live and fixed cells; antibody and protein labeling kits for use with CF® dyes; DNA and RNA quantitation kits for accurate and sensitive nucleic acid quantitation with plate readers and Qubit® fluorometers; and

bright and photostable fluorescent dyes from blue to near-IR dyes that are ideal for western blotting, super-resolution microscopy, and spectral flow cytometry.

Biotium
<https://biotium.com>

DeNovix Automated Dual-Fluorescence and Bright-field Cell Counting

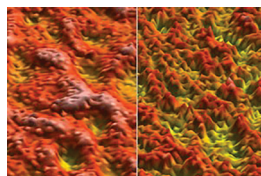


DeNovix CellDrop™ Cell Counters provide unique DirectPipette™ Technology to eliminate plastic slides and cumbersome hemocytometers from routine cell counting. CellDrop cell counters feature dual-fluorescence and bright-field optics, a variable-height sample chamber,

and powerful easy-to-use analysis software enabling the fastest counting, viability assessment, and GFP transfection efficiency measurements across the widest range of cell density, cell type, and application.

DeNovix
www.denovix.com

Digital Surf Mountains® 8 Surface and Image Analysis Software



A new version of Mountains® 8 Surface and Image Analysis Software can be used with data from profilometers and microscopes to help get more out of instrument data with improved efficiency. New analysis features include Shells for surface profiles and a series of

other improved particle and surface analysis capabilities. Thirty-day free trials of the software are available.

Digital Surf
www.digitalsurf.com