



# How common is the common-ratio effect?

Pavlo Blavatsky<sup>1</sup> · Valentyn Panchenko<sup>2</sup> · Andreas Ortmann<sup>2</sup> 

Received: 9 September 2020 / Revised: 10 May 2022 / Accepted: 18 May 2022 /  
Published online: 20 September 2022  
© The Author(s) 2022

## Abstract

The common-ratio effect and the Allais Paradox (common-consequence effect) are the two best-known violations of Expected Utility Theory. We reexamine data from 39 articles reporting experiments (143 designs/parameterizations, 14,909 observations) and find that the common-ratio effect is systematically affected by experimental design and implementation choices. The common-ratio effect is more likely to be observed in experiments with a low common-ratio factor, a high ratio of middle to highest outcome, when lotteries are presented as simple probability distributions (not in a compound/frequency form), and with high hypothetical incentives.

**Keywords** Decision under risk · Experimental practices · Common-ratio effect · Expected Utility Theory · Allais Paradox

**JEL Classification** D01 · D81

---

This project was approved by the UNSW HREAP Executive under HC No 200085. The replication material for the study is available at <https://doi.org/10.3886/E169821V1>. We are grateful to Manel Baucells, Michael Birnbaum, John Bone, David Butler, Glenn Harrison, John Hey, Andre Hofmeyr, Alister Munro, Ulrich Schmidt and Barbara Vis for helpful comments and sharing their experimental data. We are indebted to editors Roberto Weber and Marie Claire Villeval as well as two anonymous referees for their constructive comments.

---

Pavlo Blavatsky is a member of the Entrepreneurship and Innovation Chair, which is part of LabEx Entrepreneurship (University of Montpellier, France) and funded by the French government (Labex Entreprendre, ANR-10-Labex-11-01).

---

✉ Andreas Ortmann  
a.ortmann@unsw.edu.au

Pavlo Blavatsky  
p.blavatsky@montpellier-bs.com

Valentyn Panchenko  
v.panchenko@unsw.edu.au

<sup>1</sup> Montpellier Business School, 2300 Avenue des Moulins, 34185 Montpellier Cedex 4, France

<sup>2</sup> School of Economics, UNSW Business School, UNSW, Sydney, NSW 2032, Australia

## 1 Introduction

Expected Utility Theory (EUT) is one of the oldest and widely used criteria for decision making under risk. Bernoulli (1738) first proposed EUT to resolve the St. Petersburg Paradox. Von Neumann and Morgenstern (1947) provided a normatively appealing axiomatization of EUT. Yet, Allais (1953) challenged the descriptive accuracy of EUT with two examples. His first example (Allais, 1953, p. 527) is known as the Allais Paradox or common-consequence effect. Following MacCrimmon and Larsson (1979), his second example (Allais, 1953, p. 529) is known as the common-ratio effect. One illustration of this effect, due to Kahneman and Tversky (1979, p. 266), is that subjects choose \$3,000 for sure over an 80% chance of winning \$4,000 but choose a 20% chance of \$4,000 over a 25% chance of \$3,000 (when probabilities are scaled down by the same ratio, which gives the effect its name).

A wide-spread perception is that the common-ratio effect is a robust behavioral regularity. More than 40 years ago MacCrimmon and Larsson (1979, Sect. 5.3, p. 369) concluded that “even though the common-consequence problem ... is generally called the ‘Allais Paradox’, the [common-ratio effect] which is also due to Allais is more of a ‘paradox’ (if either is) in the sense that it elicits a higher rate of violation of the [EUT] axioms.” Given that the effect has since been tested in numerous studies, we can verify its experimental robustness. Our methodology is similar in spirit to meta-studies: we re-analyze experimental data collected in previous studies (meta-studies re-analyze previously published statistics).

Blavatskyy et al. (2022) re-analyzed data from 29 articles (81 experimental designs/parameterizations, 8,947 observations) on the Allais Paradox and found that the standard paradox was recorded in 38 designs (46.9%), no paradox was recorded in 27 designs (33.3%) and the reverse paradox was recorded in the remaining 16 designs (19.8%). Here we reexamine data from 39 articles with 143 experimental parameterizations of the common-ratio effect (14,909 observations). Out of these 143 designs, the standard common-ratio effect was found in 85 designs (59.4%), no common-ratio effect was found in 43 designs (30.1%), and the reverse common-ratio effect was found in the remaining 15 designs (10.5%).

Our econometric analysis shows that the common-ratio effect is susceptible to similar effects of experimental design, implementation, and parameter choices as the Allais Paradox. Specific choices of an experimenter can make the common-ratio effect appear, disappear, or reverse. It is important to raise awareness of such effects to promote the development of appropriate non-expected utility theories that can rationalize these effects.

The remainder of the paper is organized as follows. In Sect. 2, we briefly explain the common-ratio effect. In Sect. 3, we explain how we collected the data. In Sect. 4, we provide our regression analysis. In Sect. 5, we offer a concluding discussion.

## 2 The common-ratio effect

The original Allais (1953, p. 529) example of the common-ratio effect is the following: A decision maker can prefer £100 million for certain over 98% chance of £500 million (and a 2% chance of nothing) and, at the same time, she can prefer 0.98% chance of £500 million (and a 99.02% chance of nothing) over a 1% chance of £100 million (and 99% chance of nothing). In the second binary choice problem, the chances of positive gains are scaled down from the corresponding chances in the first binary choice problem by a *common ratio* of 1/100. This gives the effect its name.

The common-ratio effect is illustrated in the probability triangle (Machina, 1982) in Fig. 1 (axes not to scale). Point A (0,0) represents the prospect of £100 million for certain. Point B (0.02, 0.98) represents a 98% chance of £500 million. Point C (0.99,0) represents a 1% chance of £100 million. Point D (0.9902, 0.0098) represents a 0.98% chance of £500 million. Due to the scaling by a common ratio, line AB is parallel to line CD. The left panel of Fig. 1 shows a typical family of indifference curves for an expected-utility maximizer—positively-sloped parallel straight lines. Since AB is parallel to CD, A is located on a higher indifference curve than B (as shown on the left panel of Fig. 1) if and only if C is located on a higher indifference curve than D. Thus, an expected-utility maximizer weakly prefers A over B if and only if she weakly prefers C over D (a risk-averse choice pattern consistent with EUT).

A choice of A over B and D over C violates EUT (except for a special case of indifference) and we refer to this choice pattern as the common-ratio pattern. The right panel of Fig. 1 illustrates the common-ratio choice pattern. A decision maker who chooses B over A and C over D likewise violates EUT and we call this the reverse common-ratio pattern. Typically, the majority of decision makers reveal the common-ratio choice pattern and only a minority reveal the reverse common-ratio pattern. It is these behavioural regularities that became known as the common-ratio effect.

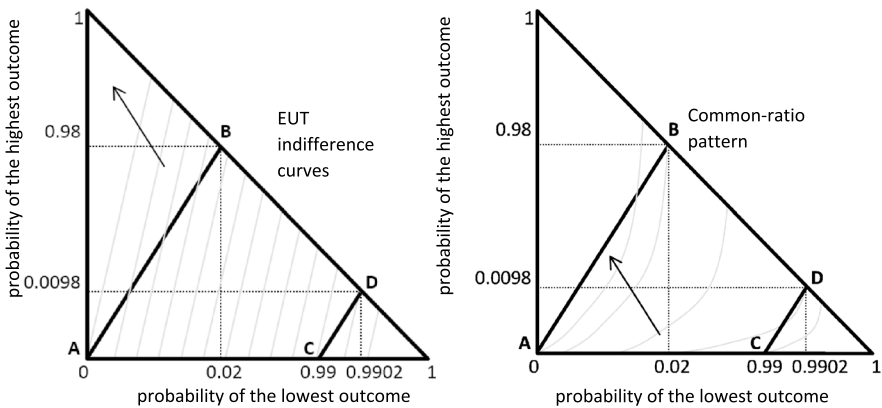


Fig. 1 Illustration of the common-ratio effect in the probability triangle (not to scale)

Several design, implementation, and parameter choices could affect the likelihood of observing the common-ratio effect. First, a small common ratio reduces the difference in expected utility between lotteries in the second binary choice (“scaled-down” lotteries C and D). Loomes (2005, p. 305) argued that this may increase certain instances of the common-ratio effect when decision makers are prone to Fechner (1860/1966)-type random errors. Such errors are more likely in the second binary choice between “scaled-down” lotteries C and D, which differ little in expected utility, compared to the first binary choice between “scaled-up” lotteries A and B, which differ considerably in expected utility.

Second, the slope of lines AB and CD in the probability triangle might influence the likelihood of the common-ratio effect. Note that the slope of lines AB and CD in the probability triangle is an increasing function of the probability of the highest outcome in risky lottery B in the first common-ratio question. Loomes and Sugden (1998) experimented with several different slopes and found that parameterizations with higher slopes generally reveal higher instances of the common-ratio effect. Parameterizations with higher slopes create a similarity (or inconsequentiality) of probabilities in the second common-ratio problem (the probability of a non-zero outcome in lottery D becomes relatively similar to that in lottery C). This similarity (or inconsequentiality) can catalyze the common-ratio effect. Blavatskyy et al. (2020) reanalyzed experimental data from 81 experiments reported in 29 studies of the Allais Paradox and found that a relatively low slope in the probability triangle is likely to reverse the Allais Paradox. We test if this conclusion also holds for the common-ratio effect.

Third, instances of the common-ratio effect may be affected by the sheer size of monetary outcomes. Lotteries with larger outcomes may induce more risk-averse choices. *Ceteris paribus*, this increases the likelihood of EUT-consistent risk-averse choice pattern  $A \succsim B$  and  $C \succsim D$ .

Fourth, Blavatskyy (2010, experiment 2, pp. 232–5) found that the common-ratio effect not only disappears but is reversed when the medium outcome is moved away from the highest outcome. A parameterization with a relatively high ratio of middle to highest outcome may increase cognitive load making both common-ratio questions a harder decision problem, which might lead to a higher rate of EUT violations. Blavatskyy et al. (2020) found that the Allais Paradox is more likely in experiments with the medium outcome being close to the highest outcome.

Fifth, instances of the common-ratio effect may be affected by the nature of the incentives used in experimental studies. Debate is ongoing about the effects of hypothetical and real incentives in experimental economics. On the one hand, Kahneman and Tversky (1979, p. 265) argued in favor of hypothetical incentives in experiments on individual choice under risk. On the other hand, financial incentives are the default choice in most economics experiments and there are good reasons for it (e.g., Hertwig & Ortmann, 2001; Ortmann, 2016). Hertwig and Ortmann (2001) argue that the choice of hypothetical or real incentives ought to be evidence-based.

Sixth, Carlin (1992) found that the common-ratio effect is less likely when choice alternatives are represented as compound lotteries or in a frequency format rather than as simple probability distributions. In their meta-study, Blavatskyy et al. (2020) found such an effect for the Allais Paradox. To summarize, we identify six design

and implementation details and parameter choices that might drive the results of experimental studies on the common-ratio effect: 1) common ratio itself; 2) slope of lines AB and CD in the probability triangle; 3) size of payoffs; 4) ratio of the middle to the highest outcome; 5) whether incentives are hypothetical or real; and 6) presentation of choice alternatives.

### 3 Data

We searched in the Scopus database with a string ( TITLE-ABS-KEY ( "common ratio") AND TITLE-ABS-KEY ( "experiment")) excluding non-economic articles, theoretical articles, and experimental studies that collect no data on the common-ratio effect (*e.g.*, Andreoni & Sprenger, 2012; Kelsey & Schepanski, 1991; Müller-Trede et al., 2018). To this list, we added articles identified in the process of data collection for our previous study (Blavatsky et al. 2020) when in effect the authors collected experimental data on the common-ratio effect (some papers refer to the common-ratio problem as the Allais paradox, *e.g.*, van de Kuilen & Wakker, 2006; Herrmann et al., 2017). We discarded several experimental studies with unconventional parameterizations<sup>1</sup> as well as between-subject tests<sup>2</sup> of the common ratio. Raw experimental data of Kahneman and Tversky (1979) are lost and we cannot infer the frequencies of four choice patterns revealed in their common-ratio experiment. Starmer and Sugden (1989b) use the same experimental data as Starmer and Sugden (1989a). Birnbaum et al. (2017) re-analyze data of Birnbaum and Schmidt (2015). This results in a list of 24 articles. Going through the references in these articles we identified another eight studies that collect data on the common-ratio effect. After circulating the first draft of our working paper we received feedback about seven additional recent studies collecting data on the common-ratio effect. With this final addition, we obtained 39 articles (preceded by an asterisk in the list of references).

<sup>1</sup> *E.g.* Ballinger and Wilcox (1997), lottery pair CRE2 in Birnbaum and Schmidt (2015), A\$40-group in Butler and Loomes (2011), questions 9 and 10 in Da Silva et al. (2013), Harrison (1994, p. 244–245), Internet study E in Birnbaum (2001), experiments 2 and 3 in Loomes (1988), common ratio tasks 1–8 in Rockenbach et al. (2007), common ratio questions 8–9, 11–12, 17–18 and 24–25 in Schmidt and Neugebauer (2007), common ratio lottery pairs in Selten et al. (1999), question pairs 2–3, 2–5 and 3–6 in Starmer and Sugden (1989a), and problem C3A–C3B in Wu (1994) that do not use a question with one riskless option; triple 4 in Bone et al. (1999), context 2a in experiment 2 of Chew and Waller (1986), Harrison and Ng (2016), Harrison and Swarthout (2014) and questions 10–11 in Hey and DiCagno (1990) with the lowest lottery outcome being non-zero; experiment 1 in Chapman and Weber (2006) that elicits certainty equivalents of two common-ratio lotteries; questions 7 and 8 in Da Silva et al. (2013) and experiment of Berns et al. (2007) with non-monetary outcomes; Harless (1992) and off-border treatment of experiment II in Sopher and Gigliotti (1993) with all lotteries located inside the probability triangle; Kagel et al. (1990), context 1b and 1c in experiment 1, context 2c in experiment 2 of Chew and Waller (1986), and stage 2 in Starmer and Sugden (1989a) with at least one negative outcome; MacDonald and Wall (1989) with all outcomes being losses; pricing and happiness rating of four common ratio lotteries in Schneider & Shor (2017).

<sup>2</sup> *E.g.* group REAL in Beattie and Loomes (1997), experiments CR5 and CR6 in Cubitt et al. (2001), Cubitt et al. (1998), study 2 in DeKay et al. (2016), Hagen (1979), Keren and Wagenaar (1987), Schmidt and Seidl (2014) and Weber and Chapman (2005).

Data collected from these 39 articles (143 design/parameterizations with 14,909 revealed-choice patterns) are presented in Table 1.

In the first column of Table 1 we list the different experimental designs/parameterizations. In column 2 we enumerate the number of corresponding participants. Columns 3–6 of Table 1 list how many subjects revealed the four possible choice patterns (risk-averse and risk-seeking EUT-consistent choice patterns, common-ratio and reverse common-ratio choice patterns). Conlisk (1989) developed a test statistic, known as Conlisk  $z$ -statistic, which takes values close to zero under the null-hypothesis of there being no EUT violations. Large positive values of the statistic indicate that common-ratio choice patterns outnumber reverse common-ratio choice patterns. Large negative values of the statistic indicate the opposite (reverse common-ratio choice patterns outnumber common-ratio choice patterns). Columns 7 and 8 of Table 1 list Conlisk  $z$ -statistic and its corresponding  $p$ -value for each of 143 design/parameterizations.

The remaining columns of Table 1 show the realizations of the six design and implementation characteristics identified in the previous section as potentially relevant for instances of the common-ratio effect. Column 9 lists the probability of the highest outcome in risky lottery (B) in the first question (which is an increasing function of the slope of lines AB and CD in the probability triangle). Column 10 lists the common-ratio factor. Column 11 lists the highest outcome and its currency. Column 12 lists the ratio of middle to highest outcome. Column 13 is a dummy variable that equals one (zero) if the researchers used real (hypothetical) incentives. Column 14 shows whether choice alternatives were presented as simple lotteries (1), in frequency form (0\*), or as compound lotteries (0). The last column is a dummy variable equal to one if experimental subjects were students.

The sources from which we collected data reported in Table 1 are listed in Table 2 (for 39 experimental articles). We do not consider data from stages 2 and 3 in the experiment of Baillon et al. (2016), repetitions 2–4 in Birnbaum and Schmidt (2015), stages 2 and 3 in the experiment of Bone et al. (1999), repetition 2 in Loomes and Sugden (1998) and repetitions 2–3 in Schmidt and Neugebauer (2007) to avoid any confounding with the learning effects. We do not consider household-decision making in Bateman and Munro (2005) to focus only on individual choice. We do not consider the repeated-play condition in Barron and Erev (2003) or the 10-play and 100-play conditions in DeKay et al. (2016) to focus only on single realization of lotteries. Buschena and Zilberman (1999, p. 261) report that 39% of subjects reveal common-ratio choice pattern in questions 1 and 2 but their Table 4 (p. 270) implies that this percentage is at least  $55\% - 8\% = 47\%$ . We assume a typo and the percentage of common-ratio choice patterns in their experiment is taken to be 49%.

Figure 2 shows the fractions of the observed outcomes of choice patterns across all the experiments in the dataset depending on whether incentives are hypothetical or real, large or small, that is above or below the corresponding median payoff in 2010 USD.<sup>3</sup> The EUT-consistent risk-averse (AC) pattern is most prevalent in

<sup>3</sup> We first apply the PPP conversion factor to all payoffs in foreign currencies to convert them to comparable USD payoffs and then use US CPI index with 2010 as a base year to bring all amount to 2010 USD. The PPP conversion factor and the US CPI index were sourced from the World Bank Database.

**Table 1** Experimental data on the common-ratio effect

Experimental design/ parameterization	Number of participants	Risk-averse EUT consistent choice	Risk-seeking EUT consistent choice	Common-ratio choice pattern	Reverse common-ratio choice pattern	Conlisk z-test, test statistics	Conlisk z-test, p-value	Probability of highest outcome in risky lottery in the first question	Common ratio	Highest outcome, currency	Ratio of middle to highest outcome	Real (1) or hypothetical (0) incentives	Simple lottery (1), frequency format (0*) or compound lottery (0)	Student (1) or not (0)
Agranov and Ortoleva (2017)	80	1	71	2	6	-1.42	0.08	0.98	0.01	25 USD	0.2	1	1	1
Baillon <i>et al.</i> (2016), No.2+No.16	154	40	38	64	12	6.78	0	0.8	0.25	24.5 EUR	0.73	1	0*	1
Baillon <i>et al.</i> (2016), No.7+No.19	156	34	38	72	12	7.66	0	0.8	0.25	12 EUR	0.75	1	0*	1
Baillon <i>et al.</i> (2016), No.10+No.21	156	50	30	64	12	6.77	0	0.8	0.25	18 EUR	0.78	1	0*	1
Baillon <i>et al.</i> (2016), No.14+No.18	156	43	38	62	13	6.33	0	0.8	0.25	14.5 EUR	0.72	1	0*	1
Baillon <i>et al.</i> (2016), No.15+No.24	156	58	27	56	15	5.27	0	0.8	0.25	25.5 EUR	0.78	1	0*	1
Barron and Erev (2003) exp. 5	91	11	44	30	6	1.64	0.05	0.8	0.25	0.04 ILS	0.75	0	1	1
Bateman and Munro (2005), T6-T8	76	25	18	25	8	3.13	0	0.6	0.5	40 GBP	0.5	1	1	0
Bateman and Munro (2005), T6-T7	76	33	18	17	8	1.83	0.03	0.6	0.5	40 GBP	0.5	1	1	0
Bateman and Munro (2005), T4-T8	76	29	13	30	4	5.15	0	0.6	0.5	40 GBP	0.5	1	1	0
Bateman and Munro (2005), T4-T7	76	33	3	32	8	4.19	0	0.6	0.5	40 GBP	0.5	1	1	0
Bateman and Munro (2005), W4-W7	34	16	15	1	2	-0.57	0.28	0.6	0.5	40 GBP	0.5	1	1	0
Battalio <i>et al.</i> (1990), set 1	60	21	9	23	7	3.13	0	0.7	0.2	20 USD	0.7	1	1	1
Battalio <i>et al.</i> (1990), set 2	30	16	1	6	7	-0.27	0.39	0.6	0.2	20 USD	0.6	1	1	1
Battalio <i>et al.</i> (1990), set 3	32	2	14	13	3	2.74	0	0.8	0.2	27 USD	0.67	1	1	1
Baucells and Heukamp (2010), 1-5	41	9	7	24	1	6.53	0	0.8	0.1	400 EUR	0.75	0 <sup>a</sup>	1	1
Baucells and Heukamp (2010), 8-12	115	14	39	50	12	5.38	0	0.8	0.1	33 EUR	0.76	0 <sup>a</sup>	1	1
Baucells and Heukamp (2010), 15-18	65	13	22	29	1	6.56	0	0.8	0.1	9 EUR	0.75	0 <sup>a</sup>	1	1
Beattie and Loomes (1997) HYPO	49	20	3	23	3	4.69	0	0.8	0.25	15 GBP	0.67	0	1	1
Beattie and Loomes (1997) RPSP	49	25	4	18	2	4.12	0	0.8	0.25	15 GBP	0.67	1	1	1
Birnbaum (2001) study D, #5-9	740	369	45	298	28	17.9	0	0.5	0.2	100 USD	0.5	0 <sup>a</sup>	1	0
Birnbaum (2001) study D, #8-9	740	242	53	425	20	27.1	0	0.5	0.02	100 USD	0.5	0 <sup>a</sup>	1	0
Birnbaum and Schmidt (2015) CRE1	54	21	6	27	0	7.28	0	0.5	0.02	46 EUR	0.61	1	1	1
Blavatskyy (2010), exp 1, #1	70	24	21	2	23	-4.82	0	0.75	0.33	100 CHF	0.6	1	0*	1
Blavatskyy (2010), exp 1, #2	70	15	30	4	21	-3.69	0	0.75	0.33	100 CHF	0.5	1	0*	1
Blavatskyy (2010), exp 1, #3	70	8	34	4	24	-4.21	0	0.75	0.33	100 CHF	0.4	1	0*	1
Blavatskyy (2010), exp 1, #4	70	65	1	1	3	-1	0.16	0.25	0.33	100 CHF	0.3	1	0*	1
Blavatskyy (2010), exp 1, #5	70	49	7	2	12	-2.8	0	0.25	0.33	100 CHF	0.2	1	0*	1
Blavatskyy (2010), exp 1, #6	70	18	29	5	18	-2.84	0	0.25	0.33	100 CHF	0.1	1	0*	1
Blavatskyy (2010), exp 2, #7	93	71	2	14	6	1.81	0.04	0.75	0.33	40 USD	0.88	1	0*	1
Blavatskyy (2010), exp 2, #8	93	58	3	9	23	-2.55	0.01	0.75	0.33	40 USD	0.75	1	0*	1
Blavatskyy (2010), exp 2, #9	93	20	22	19	32	-1.84	0.03	0.75	0.33	40 USD	0.63	1	0*	1
Blavatskyy (2010), exp 2, #10	93	12	33	12	36	-3.69	0	0.75	0.33	40 USD	0.5	1	0*	1
Blavatskyy (2010), exp 2, #11	93	3	54	5	31	-4.82	0	0.75	0.33	40 USD	0.38	1	0*	1
Blondel <i>et al.</i> (2007), r1-r2	62	35	11	10	6	1	0.16	0.3	0.5	300 FRF	0.3	1	0*	0
Bone <i>et al.</i> (1999), 1-2, triple 1	46	20	7	18	1	4.71	0	0.5	0.5	30 GBP	0.5	1	1	1
Bone <i>et al.</i> (1999), 1-3, triple 1	46	10	7	28	1	7.36	0	0.5	0.2	30 GBP	0.5	1	1	1
Bone <i>et al.</i> (1999), 1-2, triple 2	46	36	3	7	0	2.84	0	0.5	0.5	35 GBP	0.43	1	1	1
Bone <i>et al.</i> (1999), 1-3, triple 2	46	19	3	24	0	7.01	0	0.5	0.2	35 GBP	0.43	1	1	1
Bone <i>et al.</i> (1999), 1-2, triple 3	46	30	5	10	1	2.93	0	0.5	0.5	30 GBP	0.4	1	1	1
Bone <i>et al.</i> (1999), 1-3, triple 3	46	15	6	25	0	7.32	0	0.5	0.2	30 GBP	0.4	1	1	1
Burke <i>et al.</i> (1996)	50	2	34	14	0	4.37	0	0.8	0.25	10 USD	0.5	0	1	1



Table 1 (continued)

Buschena and Zilberman (1999)	202	87	12	99	4	12.4	0	0.8	0.25	4000 USD	0.75	0	1	1
Butler and Loomes (2011), M1-M4	44	1	24	17	2	3.98	0	0.8	0.25	60 AUD	0.33	1	1	1
Carlin (1992), CR-1 and CR-1b	95	49	4	38	4	6.19	0	0.8	0.25	4000 USD	0.75	0	1	1
Carlin (1992), CR-2	119	51	20	34	14	2.98	0	0.8	0.25	4000 USD	0.75	0	0*	1
Carlin (1992), CR-3	97	64	9	21	3	3.94	0	0.8	0.25	4000 USD	0.75	0	0	1
Chetty <i>et al.</i> (2020)	202	87	36	50	29	2.39	0.0	0.75	0.6	280 ZAR	0.5	1	1	1
Chew & Waller (1986) exp1, con.1a	56	11	23	16	6	2.2	0.01	0.5	0.1	100 USD	0.4	0	1	1
Chew & Waller (1986) exp2, con.2b	56	12	16	23	5	3.78	0	0.8	0.25	20000 USD	0.5	0	1	1
DeKay <i>et al.</i> (2016), study 1&3	192	47	18	117	10	13.0	0	0.8	0.25	100 USD	0.6	0	1	1
DeKay <i>et al.</i> (2016), study 4&6	189	55	26	100	8	11.5	0	0.8	0.25	10 USD	0.6	0	1	1
DeKay <i>et al.</i> (2016), study 5	93	30	14	45	4	7.33	0	0.8	0.25	10 USD	0.6	1	1	1
DeKay <i>et al.</i> (2016), study 7	162	33	32	89	8	10.7	0	0.8	0.25	100 USD	0.6	0	1	0
Da Silva <i>et al.</i> (2013), 3-5	113	19	22	54	18	4.61	0	0.8	0.25	4000 USD	0.75	0	1	1
Fatas <i>et al.</i> (2007), politicians	32	17	5	7	3	1.28	0.1	0.8	0.25	30 M EUR	0.67	0	1	0
Fatas <i>et al.</i> (2007), students	308	95	59	86	68	1.45	0.07	0.8	0.25	30 M EUR	0.67	0	1	1
Harless and Camerer (1994)	43	11	9	21	2	4.91	0	0.5	0.1	100 USD	0.4	0	N/A	1
Harrison <i>et al.</i> (2018)	175	45	58	33	39	-0.71	0.24	0.75	0.6	280 ZAR	0.5	1	1	1
Herrmann <i>et al.</i> (2017)	778	202	158	291	12	8.37	0	0.8	0.25	100 THB	0.75	1	0	0
Hey and DiCagno (1990), 43-18 <sup>b</sup>	63	1	56	0	6	-2.55	0.01	0.5	0.5	20 GBP	0.5	1	0*	1
Hey and DiCagno (1990), 29-31 <sup>c</sup>	65	13	36	9	7	0.5	0.31	0.5	0.5	30 GBP	0.33	1	0*	1
Hey and DiCagno (1990), 26-19 <sup>d</sup>	67	0	66	1	0	1.0	0.16	0.5	0.5	30 GBP	0.67	1	0*	1
Leland <i>et al.</i> (2019) cro12 min	137	103	5	24	5	3.69	0.00	0.8	0.75	40 USD	0.75	1	1	1
Leland <i>et al.</i> (2019) cro12 trans	137	124	4	3	6	-1.00	0.16	0.8	0.75	40 USD	0.75	1	0*	1
Leland <i>et al.</i> (2019) cro22 min	137	91	8	36	2	6.23	0.00	0.8	0.5	40 USD	0.75	1	1	1
Leland <i>et al.</i> (2019) cro22 trans	137	121	3	6	7	-0.28	0.39	0.8	0.5	40 USD	0.75	1	0*	1
Leland <i>et al.</i> (2019) cro32 min	137	73	8	54	2	8.60	0.00	0.8	0.25	40 USD	0.75	1	1	1
Leland <i>et al.</i> (2019) cro32 trans	137	116	5	11	5	1.51	0.07	0.8	0.25	40 USD	0.75	1	0*	1
Leland <i>et al.</i> (2019) cro42 min	137	40	8	87	2	14.06	0.00	0.8	0.05	40 USD	0.75	1	1	1
Leland <i>et al.</i> (2019) cro42 trans	137	86	3	41	7	5.39	0.00	0.8	0.05	40 USD	0.75	1	0*	1
Leland <i>et al.</i> (2019) cm12 min	137	95	7	24	11	2.23	0.01	0.75	0.8	40 USD	.625	1	1	1
Leland <i>et al.</i> (2019) cm12 trans	137	114	2	5	16	-2.44	0.01	0.75	0.8	40 USD	.625	1	0*	1
Leland <i>et al.</i> (2019) cm22 min	137	83	8	36	10	4.04	0.00	0.75	0.6	40 USD	.625	1	1	1
Leland <i>et al.</i> (2019) cm22 trans	137	110	4	9	14	-1.04	0.15	0.75	0.6	40 USD	.625	1	0*	1
Leland <i>et al.</i> (2019) cm32 min	137	67	10	52	8	6.47	0.00	0.75	0.4	40 USD	.625	1	1	1
Leland <i>et al.</i> (2019) cm32 trans	137	104	6	15	12	0.58	0.28	0.75	0.4	40 USD	.625	1	0*	1
Leland <i>et al.</i> (2019) cm42 min	137	48	13	71	5	9.89	0.00	0.75	0.2	40 USD	.625	1	1	1
Leland <i>et al.</i> (2019) cm42 trans	137	86	9	33	9	3.89	0.00	0.75	0.2	40 USD	.625	1	0*	1
Linde and Vis (2017), MPs	46	7	23	10	6	1	0.16	0.8	0.25	40 EUR	0.7	1	1	0
Linde and Vis (2017), inc student	102	9	48	37	8	4.76	0	0.8	0.25	40 EUR	0.7	1	1	1
Linde and Vis (2017), hyp student	74	9	29	30	6	4.49	0	0.8	0.25	40 EUR	0.7	0	1	1
Loomes (1988) experiment 1, p= ½	136	48	30	50	8	6.24	0	0.6	0.5	13 GBP	0.54	1	0*	1
Loomes (1988) experiment 1, p= ¼	136	49	28	49	10	5.62	0	0.6	0.25	13 GBP	0.54	1	0*	1
Loomes & Sugden (1998), gr1, 6-8	46	31	1	13	1	3.6	0	0.4	0.25	30 GBP	0.33	1	0*	1
Loomes & Sugden (1998), gr1, 11-14	46	29	7	3	7	-1.27	0.1	0.5	0.6	30 GBP	0.33	1	0*	1
Loomes & Sugden (1998), gr1, 11-16	46	18	9	14	5	2.14	0.02	0.5	0.2	30 GBP	0.33	1	0*	1
Loomes & Sugden (1998), gr1, 19-22	46	30	6	6	4	0.63	0.26	0.6	0.5	30 GBP	0.33	1	0*	1
Loomes & Sugden (1998), gr1, 19-24	46	18	10	18	0	5.38	0	0.6	0.25	30 GBP	0.33	1	0*	1
Loomes & Sugden (1998), gr1, 35-38	46	9	22	3	12	-2.45	0.01	0.75	0.6	30 GBP	0.33	1	0*	1
Loomes & Sugden (1998), gr1, 35-40	46	4	27	8	7	0.26	0.4	0.75	0.4	30 GBP	0.33	1	0*	1
Loomes & Sugden (1998), gr2, 6-8	46	41	0	3	2	0.44	0.33	0.4	0.25	20 GBP	0.5	1	0*	1
Loomes & Sugden (1998), gr2, 11-14	46	43	0	0	3	-1.77	0.04	0.5	0.6	20 GBP	0.5	1	0*	1
Loomes & Sugden (1998), gr2, 11-16	46	35	1	8	2	1.95	0.03	0.5	0.2	20 GBP	0.5	1	0*	1
Loomes & Sugden (1998), gr2, 19-22	46	36	2	6	2	1.43	0.08	0.6	0.5	20 GBP	0.5	1	0*	1
Loomes & Sugden (1998), gr2, 19-24	46	32	3	10	1	2.93	0	0.6	0.25	20 GBP	0.5	1	0*	1
Loomes & Sugden (1998), gr2, 35-38	46	21	14	2	9	-2.2	0.01	0.8	0.75	20 GBP	0.5	1	0*	1



Table 1 (continued)

Loomes & Sugden (1998), gr2, 35-40	46	15	20	8	3	1.53	0.06	0.8	0.5	30 GBP	0.33	1	0*	1
Loomes & Sugden (1987) p=1/2	120	68	10	34	8	4.29	0	0.75	0.5	4.5 GBP	0.67	1	0*	1
Loomes & Sugden (1987) p=1/6	120	38	15	64	3	10.1	0	0.75	0.167	4.5 GBP	0.67	1	0*	1
Loomes & Sugden (1987) p=1/2, t2	120	64	11	39	6	5.48	0	0.75	0.5	24 GBP	0.67	1	0*	1
Loomes & Sugden (1987) p=1/6 t2	120	36	15	67	2	11.1	0	0.75	0.167	24 GBP	0.67	1	0*	1
MacCrimmon&Larsson (1979), 1m p0.75	18	7	4	7	0	3.29	0	0.8	0.75	5M USD	0.2	0	1	N/A
MacCrimmon&Larsson (1979), 1m p0.5	18	5	4	9	0	4.12	0	0.8	0.5	5M USD	0.2	0	1	N/A
MacCrimmon&Larsson (1979), 1m p0.25	18	3	4	11	0	5.17	0	0.8	0.25	5M USD	0.2	0	1	N/A
MacCrimmon&Larsson (1979), 1m p0.1	18	2	4	12	0	5.83	0	0.8	0.1	5M USD	0.2	0	1	N/A
MacCrimmon&Larsson (1979), 1m p0.05	17	1	4	12	0	6.2	0	0.8	0.05	5M USD	0.2	0	1	N/A
MacCrimmon&Larsson (1979), 1k p0.5	16	1	11	4	0	2.24	0.01	0.8	0.5	5000 USD	0.2	0	1	N/A
Nebout and Dubois (2014) CR1	111	31	21	24	35	-1.44	0.08	0.8	0.3	20 EUR	0.75	0	1	1
Nebout and Dubois (2014) CR2	111	41	29	33	8	4.18	0	0.8	0.3	24 EUR	0.63	0	1	1
Nebout and Dubois (2014) CR3	111	37	13	57	4	8.83	0	0.8	0.3	80 EUR	0.75	0	1	1
Nebout and Dubois (2014) CR4	111	26	30	38	17	2.93	0	0.8	0.3	95 EUR	0.63	0	1	1
Nebout and Dubois (2014) CR5	111	45	13	10	43	-5	0	0.8	0.7	20 EUR	0.75	0	1	1
Nebout and Dubois (2014) CR6	111	59	15	15	22	-1.15	0.12	0.8	0.7	24 EUR	0.63	0	1	1
Nebout and Dubois (2014) CR7	111	80	6	14	11	0.6	0.27	0.8	0.7	80 EUR	0.75	0	1	1
Nebout and Dubois (2014) CR8	111	39	24	25	23	0.29	0.39	0.8	0.7	95 EUR	0.63	0	1	1
Quattrone and Tversky (1988)	88	27	16	38	7	5.28	0	0.8	0.25	30M USD	0.67	0	1	1
Schmidt and Neugebauer (2007), 1-2 <sup>e</sup>	20	7	6	6	1	2.03	0.02	0.8	0.25	40 GBP	0.75	1	0*	1
Schmidt and Neugebauer (2007), 1-22 <sup>f</sup>	22	9	7	4	2	0.81	0.21	0.8	0.5	40 GBP	0.75	1	0*	1
Schmidt and Neugebauer (2007), 5-7 <sup>d</sup>	23	14	8	0	1	-1	0.16	0.3	0.5	40 GBP	0.25	1	0*	1
Schneider and Shor (2017)	79	28	7	42	2	8.16	0	0.8	0.25	4000 USD	0.75	0	1	1
Sopher and Gigliotti (1993), AB-CD	180	30	45	91	14	9.05	0	0.9	0.3	5M USD	0.2	0	1	1
Sopher and Gigliotti (1993), AB-GH	180	40	38	81	21	6.61	0	0.9	0.62	5M USD	0.2	0	1	1
Starmer and Sugden (1989), 1-2	213	120	24	28	41	-1.57	0.06	0.7	0.6	11 GBP	0.64	1	0*	1
Starmer and Sugden (1989), 1-3	213	77	43	71	22	5.41	0	0.7	0.2	11 GBP	0.64	1	0*	1
Starmer and Sugden (1989), 4-2	213	130	26	26	31	-0.66	0.25	0.7	0.6	11 GBP	0.64	1	0*	1
Starmer and Sugden (1989), 4-3	213	80	38	76	19	6.37	0	0.7	0.2	11 GBP	0.64	1	0*	1
van de Kuilen & Wakker (2006), 1	52	10	12	19	11	1.48	0.07	0.8	0.25	7.75 EUR	0.77	1	0*	1
van de Kuilen & Wakker (2006), 2	52	9	16	17	10	1.36	0.09	0.8	0.25	8.5 EUR	0.74	1	0*	1
van de Kuilen & Wakker (2006), 3	52	11	13	17	11	1.14	0.13	0.8	0.25	9 EUR	0.72	1	0*	1
van de Kuilen & Wakker (2006), 4	52	8	16	20	8	2.37	0.01	0.8	0.25	9.25 EUR	0.76	1	0*	1
van de Kuilen & Wakker (2006), 5	52	8	14	17	13	0.73	0.23	0.8	0.25	9.5 EUR	0.79	1	0*	1
van de Kuilen & Wakker (2006), 6	52	14	19	12	7	1.15	0.12	0.8	0.25	11 EUR	0.73	1	0*	1
van de Kuilen & Wakker (2006), 7	52	9	11	16	16	0	0.5	0.8	0.25	11.25 EUR	0.76	1	0*	1
van de Kuilen & Wakker (2006), 8	52	7	22	13	10	0.62	0.27	0.8	0.25	11.5 EUR	0.78	1	0*	1
van de Kuilen & Wakker (2006), 9	52	10	15	15	12	0.57	0.28	0.8	0.25	13 EUR	0.73	1	0*	1
van de Kuilen & Wakker (2006), 10	52	8	18	17	9	1.59	0.06	0.8	0.25	13.5 EUR	0.74	1	0*	1
van de Kuilen & Wakker (2006), 11	52	8	18	16	10	1.18	0.12	0.8	0.25	14 EUR	0.75	1	0*	1
van de Kuilen & Wakker (2006), 12	52	7	22	18	5	2.9	0	0.8	0.25	15 EUR	0.73	1	0*	1
van de Kuilen & Wakker (2006), 13	52	10	16	15	11	0.78	0.22	0.8	0.25	15.5 EUR	0.74	1	0*	1
van de Kuilen & Wakker (2006), 14	42	12	13	8	9	-0.24	0.41	0.8	0.25	15.75 EUR	0.76	1	0*	1
van de Kuilen & Wakker (2006), 15	52	11	19	15	7	1.74	0.04	0.8	0.25	16 EUR	0.78	1	0*	1
Wu (1994), C5A-C5B	206	120	6	74	6	8.94	0	0.8	0.25	4000 USD	0.75	0	1	1

<sup>a</sup> Three randomly chosen subjects were rewarded via random-lottery incentive scheme

<sup>b</sup> excluding five subjects who revealed indifference in common-ratio questions 43 and 18

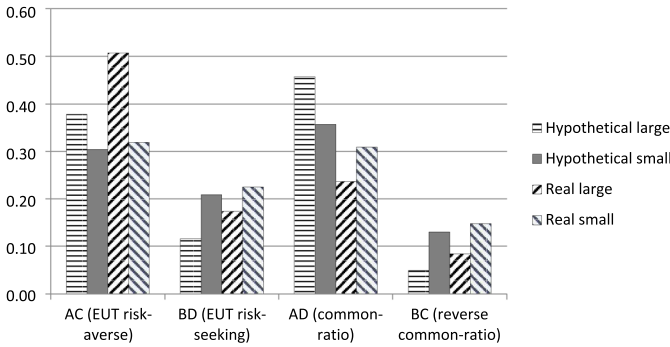
<sup>c</sup> excluding three subjects who revealed indifference in common-ratio questions 29 and 31

<sup>d</sup> excluding one subject who revealed indifference in common-ratio questions

<sup>e</sup> excluding four subjects who revealed indifference in common-ratio question 2

<sup>f</sup> excluding two subjects who revealed indifference in common-ratio question 22

\* frequency and compound lottery formats are coded both as 0 in the regression analysis



**Fig. 2** Frequency of choice patterns for each of four payoff categories—hypothetical payoffs, large and small, i.e., above and below the median hypothetical payoff of \$123 (in 2010 USD) and real payoffs, large and small, relatively to the median real payoff of \$34 (in 2010 USD)

case of real large payoffs, whereas common-ratio (AD) pattern appears in the case of hypothetical large payoff. Interestingly, small hypothetical and real payoffs exhibit similar and closer to uniformly-distributed choice patterns.

### 4 Regression Analysis

In every experiment each subject can reveal only one of four possible choice patterns: risk-averse EUT-consistent choice, risk-seeking EUT-consistent choice, common-ratio choice pattern, and reverse common-ratio choice pattern. In this case, a multinomial logistic specification is appropriate:

$$\ln \left( \frac{P_i}{P_{RAEUT}} \right) = \beta_{i0} + \beta_{i1} \ln \mathbf{P} \times \mathbf{I} + \beta_{i2} \ln \mathbf{P} \times (1 - \mathbf{I}) + \beta_{i3} \mathbf{I} + \beta_{i4} \mathbf{L} + \beta_{i5} \mathbf{S} + \beta_{i6} \mathbf{O} + \beta_{i7} \mathbf{PH} + \beta_{i8} \mathbf{CR},$$

where  $P_i$  is the probability of observing a specific choice pattern,  $i = \{\text{risk-seeking EUT, common-ratio, and reverse common-ratio}\}$  and risk-averse EUT-consistent choice pattern is set as the baseline outcome and explanatory variables are:

- highest outcome  $\mathbf{P}$  (column 11 of Table 1, after conversion to 2010 USD, see footnote 3);
- real-incentives dummy variable  $\mathbf{I}$  (column 13 of Table 1);

**Table 2** Sources of experimental data

Experimental study	Source of experimental data reported in Table 1
Agranov and Ortoleva (2017)	Data archive and online supplementary material accessed on <a href="https://www.journals.uchicago.edu/doi/suppl/10.1086/689774">https://www.journals.uchicago.edu/doi/suppl/10.1086/689774</a>
Baillon et al. (2016)	Baillon et al., (2016, p.106, Tables 6–7) and P. Wakker's website <a href="https://personal.eur.nl/wakker/data/16.2.group.indiv/links.htm">https://personal.eur.nl/wakker/data/16.2.group.indiv/links.htm</a>
Barron and Erev (2003)	Barron and Erev (2003, p. 220, p. 225), Table S.3 in sup material ( <a href="http://journal.sjdm.org/16/16527/supp.pdf">http://journal.sjdm.org/16/16527/supp.pdf</a> )
Bateman and Munro (2005)	Bateman and Munro (2005, p. C183, Table 1; p. C187, supplementary material) and <b>email from A. Munro</b>
Battalio et al. (1990)	Battalio et al., (1990, p. 27–28; p. 37, Table 5)
Baucells and Heukamp (2010)	Baucells and Heukamp (2010, p. 155, Table 5), <b>email M. Baucells</b>
Beattie and Loomes (1997)	Beattie and Loomes (1997, p. 160, Fig. 1; p. 163, Table 1; p. 164)
Birnbaum (2001)	Birnbaum (2001, p.36, Table 5) <a href="http://psych.fullerton.edu/mbirnbaum/archive.htm">psych.fullerton.edu/mbirnbaum/archive.htm</a>
Birnbaum and Schmidt (2015)	Birnbaum and Schmidt (2015, p. 147, Table 1), <b>email U. Schmidt</b>
Blavatskyy (2010)	Blavatskyy (2010, p. 222, Table 1; p. 225, Table 2; p. 234, Table 3; p. 235)
Blondel et al. (2007)	Blondel et al., (2007, p.651, Table 2; p.651–652) Sect. 4.3.1 of WP
Bone et al. (1999)	Bone et al., (1999, p. 67; p. 72, Table 3; p. 73, Table 4) and <b>an Excel file emailed by J. Bone</b>
Burke et al. (1996)	Burke et al., (1996, p. 620, Table 1; p. 630 Data supplementary material)
Buschena and Zilberman (1999)	Buschena and Zilberman (1999, p. 259; p. 261; p. 270, Table A.1)
Butler and Loomes (2011)	Butler and Loomes (2011, p.517, Fig. 3), <b>Excel file emailed by D. Butler</b>
Carlin (1992)	Carlin (1992, p. 226, Table 3; p. 232 supplementary material)
Chetty et al. (2020)	Chetty et al., (2020, Sect. 3), <a href="https://doi.org/10.1016/j.socsc.2020.101520">https://doi.org/10.1016/j.socsc.2020.101520</a>
Chew and Waller (1986)	Chew and Waller (1986, p. 65, Table 3; p. 62, Table 2)
Da Silva et al. (2013)	Da Silva et al., (2013, p. 561; p. 562, Table 2; p. 565, Table 5)
DeKay et al. (2016)	DeKay et al., (2016, p. 365, Table 1), Tables S.2–14 of supplementary material ( <a href="http://journal.sjdm.org/16/16527/supp.pdf">http://journal.sjdm.org/16/16527/supp.pdf</a> )
Fatas et al. (2007)	Fatas et al., (2007, p. 174; 186–189; Table 2, p. 189)
Harless and Camerer (1994)	Harless and Camerer(1994, p. 1271; 1272, Table VII)
Harrison et al. (2018)	Harrison et al., (2018, p. 328–330) and <a href="https://cear.gsu.edu/gwh/">https://cear.gsu.edu/gwh/</a>
Herrmann et al. (2017)	Herrmann et al., (2017, pp. 132–133; p. 139, Table 2)
Hey and DiCagno (1990)	Hey and DiCagno (1990, pp. 286–287; pp. 288–289, Table 1; pp. 305–306, supplementary material)
Leland et al. (2019)	Supplementary material SM3, <b>an Excel file emailed by N. Wilcox</b>
Linde and Vis (2017)	Linde and Vis (2017, p. 108, Table 1), <b>DTA file emailed by B. Vis</b>
Loomes (1988)	Loomes (1988, p.48, Table2; p.51–52; p. 53, Table 4)
Loomes and Sugden (1998)	Loomes and Sugden (1998, p. 587–588, Fig. 2; p. 589), Loomes et al., (2002, p. 111, Table 2a); p. 112, Table 2b)
Loomes and Sugden (1987)	Loomes and Sugden (1987, p.123; p.124, Fig. 2; p.125, Table 2)
MacCrimmon and Larsson (1979)	MacCrimmon and Larsson (1979, pp. 354–357)
Nebout and Dubois (2014)	Nebout and Dubois (2014, p. 25; p. 27; p. 30, Table 2)

**Table 2** (continued)

Experimental study	Source of experimental data reported in Table 1
Quattrone and Tversky (1988)	Quattrone and Tversky (1988, p. 721; p. 731–732)
Schmidt and Neugebauer (2007)	Schmidt and Neugebauer (2007, pp.471–472; p. 480, supplementary material) and <b>an Excel file emailed by U. Schmidt</b>
Schneider and Shor (2017)	Schneider and Shor (2017, p. 977; p. 980, Table 3)
Sopher and Gigliotti (1993)	Sopher and Gigliotti (1993, p. 87, Table II; p. 89–91; p. 102–103)
Starmer and Sugden (1989a)	Starmer and Sugden (1989a, p. 163–166; p. 171, Table 3)
van de Kuilen and Wakker (2006)	van de Kuilen and Wakker (2006, p. 159), data set downloaded from <a href="https://personal.eur.nl/wakker/data/data2006.lallaislearn.htm">https://personal.eur.nl/wakker/data/data2006.lallaislearn.htm</a>
Wu (1994)	Wu (1994, p. 42; p. 48, Table 3)

- probability of the highest outcome in a risky lottery in the first common-ratio question<sup>4</sup> **PH** (column 9 of Table 1); and
- the ratio of middle to highest outcome **O** (column 12 of Table 1);
- lottery presentation categorical variable **L** (column 14 of Table 1)<sup>5</sup>;
- student dummy variable **S** (column 15 of Table 1)<sup>6</sup>;
- the common ratio **CR** (column 10 of Table 1).

The highest outcomes **P** are natural-logged to reconcile a wide range of their values and to reflect saturation. There is a strong negative correlation between  $\ln \mathbf{P}$  and the real incentives dummy variable **I**, as studies with high payoffs use only hypothetical incentives. We use the interaction terms  $\ln \mathbf{P} \times \mathbf{I}$  and  $\ln \mathbf{P} \times (1 - \mathbf{I})$  to allow for different slopes for  $\ln \mathbf{P}$  for the cases of real and hypothetical payoffs, respectively. We also consider several alternative model specifications presented in Table 4 in the supplementary material. (They produce similar results with a lower goodness of fit.)

Table 3 presents the average marginal effects (observation-specific marginal effects averaged over all observations) of the 4-outcome logistic regression (regression coefficients  $\beta$  are presented in Table 5 in the supplementary material). Note that average marginal effects for each explanatory variable sum up to zero over the four possible choice patterns. Table 3 reports regular standard errors as well as cluster-robust standard errors. The cluster-robust method allows for correlated residuals within clusters, but not across clusters. Correlations may be induced by some unobserved conditions specific to a cluster. We cluster at the level of the country resulting in 11 clusters.

<sup>4</sup> This is an increasing function of the slope of lines AB and CD in the probability triangle shown in Fig. 1.

<sup>5</sup> Harless and Camerer (1994) do not explicitly state their lottery representation format. They collect additional data points for the Chew and Waller (1986) experiment, who used a simple lottery representation. Therefore, we assume that Harless and Camerer (1994) used a simple lottery representation.

<sup>6</sup> MacCrimmon and Larsson (1979) do not specify their subject pool, we assume that they recruited students.

**Table 3** Average marginal effects computed from the logit model

Prob. of choice	Explanatory variables							
	lnP × I (ln payoffs, real)	lnP × (1 - I) (ln payoffs, hypoth.)	I (= 1, real incent.)	PH (prob. high- est. outcome)	O (= mid/high outcome)	L (= 1, simp. lottery)	S (= 1, student)	CR (common ratio)
<i>P</i> (EUT risk-averse)	0.028	-0.002	-0.128	-0.384	-0.064	-0.032	0.012	<b>0.483</b>
stand errors	(0.011)	(0.002)	(0.041)	(0.044)	(0.011)	(0.024)	(0.013)	(0.022)
p-values	0.009	0.338	0.002	0	0	0.178	0.36	0
CI stand errors	(0.083)	(0.007)	(0.289)	(0.197)	(0.045)	(0.089)	(0.058)	(0.049)
CI p-value	0.732	0.811	0.657	0.051	0.162	0.719	0.833	0
<i>P</i> (EUT risk-seeking)	0.043	-0.004	-0.125	<b>0.337</b>	-0.028	- <b>0.153</b>	0.022	-0.076
stand errors	(0.008)	(0.001)	(0.032)	(0.037)	(0.009)	(0.017)	(0.011)	(0.018)
p-values	0	0.012	0	0	0.001	0	0.053	0
CI stand errors	(0.038)	(0.007)	(0.152)	(0.078)	(0.026)	(0.049)	(0.035)	(0.077)
CI p-values	0.254	0.618	0.412	0	0.278	0.002	0.531	0.321
<i>P</i> (common-ratio)	-0.054	<b>0.011</b>	<b>0.244</b>	-0.080	<b>0.147</b>	<b>0.212</b>	-0.040	- <b>0.537</b>
stand errors	(0.010)	(0.001)	(0.039)	(0.044)	(0.010)	(0.024)	(0.012)	(0.023)
p-values	0	0	0	0.068	0	0	0.001	0
CI stand errors	(0.038)	(0.003)	(0.102)	(0.112)	(0.030)	(0.053)	(0.033)	(0.078)
CI p-values	0.162	0	0.017	0.474	0	0	0.217	0
<i>P</i> (reverse CR)	-0.018	-0.006	0.009	0.128	-0.055	-0.026	0.006	<b>0.131</b>
stand errors	(0.007)	(0.001)	(0.025)	(0.031)	(0.007)	(0.015)	(0.009)	(0.014)
p-values	0.007	0	0.731	0	0	0.069	0.499	0
CI stand errors	(0.022)	(0.003)	(0.092)	(0.090)	(0.020)	(0.034)	(0.025)	(0.045)
CI p-values	0.41	0.096	0.925	0.156	0.006	0.432	0.807	0.004

We report regular standard errors (in parenthesis), and the cluster-robust standard errors (clustered at the country level). Coefficients significant at 0.05 level for both the regular and cluster-robust methods are highlighted with bold **black font**. Coefficients significant at 0.05 level for the regular, but not the cluster-robust method are highlighted with italics. (Same convention for Tables 4, 5 in the supplementary material.)

Looking at the probability of observing the common-ratio choice pattern (the section of Table 3 highlighted in boxed text), we find that it is influenced by the following factors. First, a lower common ratio (the last column of Table 3) increases the probability that subjects reveal the common-ratio choice pattern by 0.054 for each 0.1 decrease in the common ratio largely because it decreases the likelihood that subjects reveal the risk-averse EUT-consistent choice. For instance, if we reduce the overall median common ratio of 0.25 to 0.01, as in the original Allais (1953, p. 529) example, the probability of observing the common-ratio choice pattern increases by approximately 0.13. This confirms the well-known observation that experiments with low common ratios produce high instances of EUT violations. We could also speculate that this fact is probably well-known because it happens to be the strongest factor influencing the likelihood of the common-ratio effect.

Second, conducting an experiment with hypothetical incentives increases the chance of observing the common-ratio choice pattern by 0.011 for each relative increase in payoffs (the third column of Table 3). In combination with the intercept term shifter (the fourth column) that is actually lower for the hypothetical incentives than for the real incentives, we conclude that very high hypothetical incentives lead to the increased probability of the common-ratio choice pattern relatively to the low hypothetical incentives. Conversely, for real incentives, the chance of observing the common-ratio choice pattern is reduced by 0.054 for each relative increase in real payoffs. Hence, high real incentives lead to the reduced observations of the common-ratio choice pattern in comparison to low real incentives. This is largely due to the fact that high real incentives increase the likelihood of the EUT-consistent choices (both risk-averse and risk-seeking).

Third, subjects are more likely to reveal the common-ratio effect when choice alternatives are described as simple probability distributions (not in a compound or frequency form), *cf.* the seventh column of Table 3. Largely this happens because subjects are then less likely to reveal the risk-seeking EUT-consistent choice pattern. For example, changing the presentation format from compound to simple lotteries increases the probability of observing the common-ratio effect by 0.212.

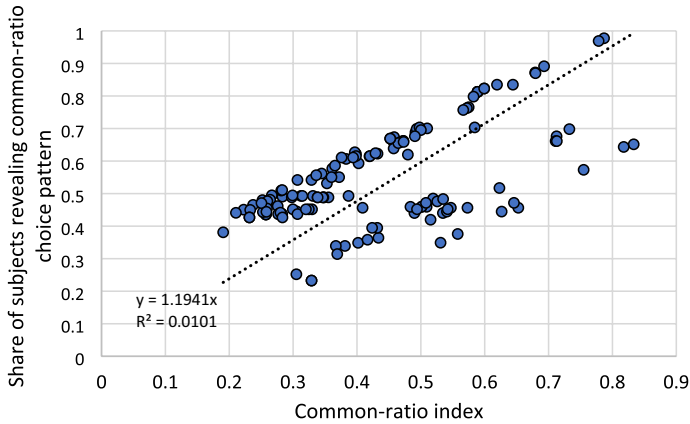
Fourth, designing the common-ratio experiment with the middle outcome being close to the highest outcome (*cf.* the sixth column of Table 3) favours the instances of the common-ratio choice pattern at the expense of EUT consistent choices and the reverse common-ratio choice pattern. Blavatskyy et al. (2020, Table 2) report a similar effect for the Allais paradox.

Based on our findings we can construct a common-ratio index capturing the main features of the experimental design that favor the common ratio effect<sup>7</sup>:

$$\text{CRindex} = -0.054 \ln \mathbf{P} \times \mathbf{I} + 0.011 \ln \mathbf{P} \times (1 - \mathbf{I}) + 0.244\mathbf{I} + 0.147\mathbf{O} + 0.212\mathbf{L} + 0.537\mathbf{CR}$$

Figure 3 plots this index against the share of subjects revealing the common-ratio choice pattern in each of the 143 experimental designs in our data set. The index has predictive abilities.

<sup>7</sup> We thank a referee for *this journal* for the suggestion.



**Fig. 3** Share of subjects revealing the common-ratio choice pattern vs. common-ratio index.  $N = 143$  experimental designs. Linear trend is indicated by the dotted line and its equation is reported

## 5 Discussion

Over the last three decades researchers have produced large quantities of data on numerous behavioral regularities. It is important to take stock as experimental results are sometimes contradictory and one can fail to see the forest for the trees, possibly misdirecting theory efforts. In this paper we have reexamined experimental data on one specific behavioral regularity in choice under risk — the common-ratio effect. Our methodology is similar to meta-studies that sample previously published results in a systematic and replicable manner except that we re-analyze previously collected experimental data rather than previously published results.

We believe that our approach limits the publication bias and selective reporting that may be present in traditional meta-studies (*cf.* Kvarven et al., 2020). We re-analyze experimental data from articles published on a variety of topics, not necessarily focusing on the common-ratio effect. For example, Agranov and Ortoleva (2017) study a preference for deliberate randomization in stochastic choice; Baillon et al. (2016) and Bone et al. (1999) compare group and individual decision making; Bateman and Munro (2005) study decision making in households; Battalio et al. (1990) and Harless and Camerer (1994) compare the goodness of fit of different non-EUT theories; Buschena and Zilberman (1999) study the effects of similarity; Blondel et al. (2007) study preferences of drug addicts; Butler and Loomes (2011) study imprecision of preferences under risk; Chetty et al. (2020) investigate the trust game; Harrison et al. (2018) study smoking behavior; Fatas et al. (2007) and Linde and Vis (2017) study decision making of politicians; Hey and DiCagno (1990) elicit indifference curves in the probability triangle; Loomes and Sugden (1998) compare the goodness of fit of different models of probabilistic choice; Schmidt and Neugebauer (2007) study the effect of random errors on risky choice; Wu (1994) studies ordinal independence of preferences. Given that the primary focus of these studies is not the common-ratio effect per se (which appears in their experimental treatments



by serendipity) there is no *ex ante* reason to expect any publication bias or selective reporting with respect to the common-ratio effect in these studies.

Examining a large body of empirical evidence on the common-ratio effect during the last 40 years shows some remarkable regularities. Some of these regularities are well-known. For example, the fact that experimental designs with a small common ratio induce more instances of the common-ratio choice pattern is built into many descriptive decision theories such as rank-dependent utility (Quiggin, 1981) or cumulative prospect theory (Tversky & Kahneman, 1992) that use inverse S-shaped probability weighting function to capture this effect. Other regularities we documented above are less known if not outright surprising.

For example, we find that the common-ratio effect is more likely to be observed when choice alternatives are presented as simple probability distributions, *i.e.* not described in frequency or compound-lottery format. We also find that common-ratio experiments with very high hypothetical incentives are more likely to document the common-ratio choice pattern. If we subscribe to the point of view that substantially high real incentives reduce the impact of random errors, noise, or imprecision in revealed preferences (Hertwig & Ortmann, 2001), then our results suggest that the EUT risk-averse outcome is a behavioral regularity that is more likely to be observed once randomness and imprecision in revealed preferences are reduced.

Another less known finding is that common-ratio experiments with middle lottery outcome being close to the highest lottery outcome are more likely to document the common-ratio choice pattern. This effect is consistent with findings in Blavatskyy (2010, experiment 2, pp. 232–5) that the common-ratio effect gets reversed when the middle outcome is moved away from the highest outcome. Testing the common-ratio effect with lotteries that have the middle outcome close to the highest outcome induces similarity (Rubinstein, 1988) in the second pairwise choice between scaled-down lotteries C and D. This could induce a higher likelihood of observing the common-ratio choice pattern.

The standard common-ratio effect was found in 85 out of 143 (59.4%) experimental designs analyzed in this paper. This could be interpreted as a large effect revealing strong evidence against expected utility theory. We do not disagree with this interpretation of the data but reserve our judgement. Our results indicate several experimental design and implementation choices that could affect the likelihood of the common-ratio effect. If the existing literature largely used designs favoring the standard common-ratio effect, then it is hardly surprising that the experimental results are problematic for expected utility theory. Yet, had the literature largely used other designs identified in our paper, then the experimental results would have been different. This suggests that a systematic exploration of the whole parameter space would be desirable.

It is important to raise awareness of how different behavioral regularities are affected by the design and implementation characteristics and parameter choices of experimenters. For empirical work, our findings are important for the design of future experiments. For theoretical work, our findings provide guidelines for the development of generalized non-expected utility theories. A good descriptive decision theory should not aim at capturing one canonical version of the common-ratio effect. In the spirit of Erev et al. (2017), it should be flexible enough to rationalize instances of the common-ratio effect in some experimental designs/parameterizations but not others.

**Supplementary Information** The online version contains supplementary material available at <https://doi.org/10.1007/s10683-022-09761-y>.

**Funding** Open Access funding enabled and organized by CAUL and its Member Institutions.

**Open Access** This article is licensed under a Creative Commons Attribution 4.0 International License, which permits use, sharing, adaptation, distribution and reproduction in any medium or format, as long as you give appropriate credit to the original author(s) and the source, provide a link to the Creative Commons licence, and indicate if changes were made. The images or other third party material in this article are included in the article's Creative Commons licence, unless indicated otherwise in a credit line to the material. If material is not included in the article's Creative Commons licence and your intended use is not permitted by statutory regulation or exceeds the permitted use, you will need to obtain permission directly from the copyright holder. To view a copy of this licence, visit <http://creativecommons.org/licenses/by/4.0/>.

## References

- \*Agranov, M., & Ortoleva, P. (2017). Stochastic choice and preferences for randomization. *Journal of Political Economy*, *125*(1), 40–68
- Allais, M. (1953). Le Comportement de l'Homme Rationnel devant le Risque: Critique des Postulats et Axiomes de l'Ecole Américaine. *Econometrica*, *21*, 503–546.
- Andreoni, J., & Sprenger, C. (2012). Risk preferences are not time preferences. *American Economic Review*, *102*(7), 3357–3376.
- \*Baillon, A., Bleichrodt, H., Liu, N., & Wakker, P. (2016). Group decision rules and group rationality under risk. *Journal of Risk and Uncertainty*, *52*(2), 99–116
- Ballinger, P., & Wilcox, N. (1997). Decisions, error and heterogeneity. *Economic Journal*, *107*, 1090–1105.
- \*Barron, G., & Erev, I. (2003). Small feedback-based decisions and their limited correspondence to description-based decisions. *Journal of Behavioral Decision Making*, *16*, 215–233
- \*Bateman, I., & Munro, A. (2005). An experiment on risky choice amongst households. *Economic Journal*, *115*(502), C176–C189
- \*Battalio, R. C., Kagel, J. H., & Jiranyakul, K. (1990). Testing between alternative models of choice under uncertainty: Some initial results. *Journal of Risk and Uncertainty*, *3*(1), 25–50.
- \*Baucells, M., & Heukamp, F. H. (2010). Common ratio using delay. *Theory and Decision*, *68*(1–2), 149–158.
- \*Beattie, J., & Loomes, G. (1997). The impact of incentives upon risky choice experiments. *Journal of Risk and Uncertainty*, *14*, 149–162.
- Bernoulli, D. (1738) "Specimen theoriae novae de mensura sortis" *Commentarii Academiae Scientiarum Imperialis Petropolitanae*
- Berns, G. S., Capra, C. M., Moore, S., & Noussair, C. (2007). A shocking experiment: New evidence on probability weighting and common ratio violations. *Judgment and Decision Making*, *2*, 234–242.
- \*Birnbaum, M. H. (2001). A Web-based program of research on decision making. In U.-D. Reips & M. Bosnjak (Eds.), *Dimensions of Internet Science* (pp. 23–55). Lengerich: Pabst Science Publishers.
- \*Birnbaum, M. H., & Schmidt, U. (2015). The impact of learning by thought on violations of independence and coalescing. *Decision Analysis*, *12*, 144–152.
- Birnbaum, M. H., Schmidt, U., & Schneider, M. D. (2017). Testing independence conditions in the presence of errors and splitting effects. *Journal of Risk and Uncertainty*, *54*(1), 61–85.
- \*Blavatsky, P. R. (2010). Reverse common ratio effect. *Journal of Risk and Uncertainty*, *40*(3), 219–241.
- Blavatsky, P. R., Ortmann, A., & Panchenko, V. (2022). On the experimental robustness of the Allais paradox. *American Economic Journal: Microeconomics*, *14*(1), 143–146.
- \*Blondel, S., Lohéac, Y., & Rinaudo, S. (2007). Rationality and drug use: An experimental approach. *Journal of Health Economics*, *26*(3), 643–658.
- \*Bone, J., Hey, J., & Suckling, J. (1999). Are groups more (or less) consistent than individuals? *Journal of Risk and Uncertainty*, *18*(1), 63–81.
- \*Burke, M. S., Carter, J. R., Gominiak, R. D., & Ohl, D. F. (1996). An experimental note on the Allais paradox and monetary incentives. *Empirical Economics*, *21*, 617–632.

- \*Buschena, D. E., & Zilberman, D. (1999). Testing the effects of similarity on risky choice: Implications for violations of expected utility. *Theory and Decision*, 46(3), 253–276.
- \*Butler, D., & Loomes, G. (2011). Imprecision as an account of violations of independence and betweenness. *Journal of Economic Behavior & Organization*, 80(3), 511–522.
- \*Carlin, P. S. (1992). Violations of the reduction and independence axioms in Allais-type and common-ratio effect experiments. *Journal of Economic Behavior and Organization*, 19(2), 213–235.
- Chapman, G. B., & Weber, B. J. (2006). Decision biases in intertemporal choice and choice under uncertainty: Testing a common account. *Memory and Cognition*, 34(3), 589–602.
- \*Chetty, R., Hofmeyr, A., Kincaid, H., & Monroe, B. (2020). The trust game does not (only) measure trust: The risk-trust confound revisited. *Journal of Behavioral and Experimental Economics* (forthcoming)
- \*Chew, H. S., & Waller, W. S. (1986). Empirical tests of weighted utility theory. *Journal of Mathematical Psychology*, 30(1), 55–72.
- Conlisk, J. (1989). Three variants on the allais example. *American Economic Review*, 79(3), 392–407.
- Cubitt, R. P., Starmer, C., & Sugden, R. (1998). Dynamic choice and the common ratio effect: An experimental investigation. *Economic Journal*, 108(450), 1362–1380.
- Cubitt, R. P., Starmer, C., & Sugden, R. (2001). Discovered preferences and the experimental evidence of violations of expected utility theory. *Journal of Economic Methodology*, 8(3), 385–414.
- \*Da Silva, S., Baldo, D., & Matsushita, R. (2013). Biological correlates of the Allais Paradox. *Applied Economics*, 45(4–6), 555–568.
- \*DeKay, M., Schley, D., Miller, S., Erford, B., Sun, J., Karim, M., & Lanyon, M. (2016). The persistence of common-ratio effects in multiple-play decisions. *Judgment and Decision Making*, 11(4), 361–379.
- Erev, I., Ert, E., Plonsky, O., Cohen, D., & Cohen, O. (2017). From anomalies to forecasts: Toward a descriptive model of decisions under risk, under ambiguity, and from experience. *Psychological Review*, 124(4), 369–409.
- \*Fatas, E., Neugebauer, T., & Tamborero, P. (2007). How politicians make decisions: A political choice experiment. *Journal of Economics*, 92(2), 167–196.
- Fechner, G. (1860/1966) *Elements of Psychophysics*. New York: Holt, Rinehart and Winston
- Hagen, O. (1979). Towards a positive theory of preferences under risk. In M. Allais & O. Hagen (Eds.), *Expected utility hypotheses and the Allais Paradox* (pp. 271–302). Springer.
- \*Harless, D. W., & Camerer, C. F. (1994). The predictive utility of generalized expected utility theories. *Econometrica: Journal of the Econometric Society*, pp. 1251–1289
- Harless, D. W. (1992). Predictions about indifference curves inside the unit triangle: A test of variants of expected utility theory. *Journal of Economic Behavior and Organization*, 18, 391–414.
- Harrison, G. W. (1994). Expected utility and the experimentalists. *Empirical Economics*, 19, 223–253.
- \*Harrison, G. W., Hofmeyr, A., Ross, D., & Swarthout, J. T. (2018). Risk preferences, time preferences, and smoking behavior. *Southern Economic Journal*, 85(2), 313–348.
- Harrison, G. W., & Ng, J. M. (2016). Evaluating the expected welfare gain from insurance. *The Journal of Risk and Insurance*, 83(1), 91–120.
- Harrison, G. W., & Swarthout, J. T. (2014). Experimental payment protocols and the Bipolar Behaviorist. *Theory and Decision*, 77, 423–438.
- \*Herrmann, T., Hübner, O., Menkhoff, L., & Schmidt, U. (2017). Allais for the poor: Relations to ability, information processing, and risk attitudes. *Journal of Risk and Uncertainty*, 54(2), 129–156.
- Hertwig, R., & Ortmann, A. (2001). Experimental practices in economics: A methodological challenge for psychologists? *Behavioral and Brain Sciences*, 24(3), 383–451.
- \*Hey, J., & DiCagno, D. (1990). Circles and Triangles: An experimental estimation of Indifference lines in the Marschak-Machina triangle. *Journal of Behavioral Decision Making*, 3, 279–306.
- Kagel, J., Battalio, R. C., & MacDonald, D. (1990). Tests of “Fanning Out” of indifference curves: results from animal and human experiments. *American Economic Review*, 80(4), 912–921.
- Kahneman, D., & Tversky, A. (1979). Prospect theory: An analysis of decision under risk. *Econometrica*, 47, 263–291.
- Kelsey, D., & Schepanski, A. (1991). Regret and disappointment in taxpayer reporting decisions: An experimental study. *Journal of Behavioral Decision Making*, 4(1), 33–53.
- Keren, G., & Wagenaar, W. A. (1987). Violation of expected utility theory in unique and repeated gambles. *Journal of Experimental Psychology: Learning Memory, and Cognition*, 13, 387–391.

- Kvarven, A., Strömmland, E., & Johannesson, M. (2020). Comparing meta-analyses and preregistered multiple-laboratory replication projects. *Nature Human Behavior*, 4, 423–434.
- \*Leland, J. W., Schneider, M., & Wilcox, N. T. (2019). Minimal frames and transparent frames for risk, time, and uncertainty. *Management Science*, 65, 3949–4450.
- \*Linde, J., & Vis, B. (2017). Do politicians take risks like the rest of us? An experimental test of prospect theory under MPs. *Political Psychology*, 38(1), 101–117.
- \*Loomes, G., & Sugden, R. (1987). Testing for regret and disappointment in choice under uncertainty. *Economic Journal*, 97, 118–129.
- \*Loomes, G. (1988). Further evidence of the impact of regret and disappointment in choice under uncertainty. *Economica*, 55(217), 47–62.
- Loomes, G. (2005). Modelling the stochastic component of behaviour in experiments: Some issues for the interpretation of data. *Experimental Economics*, 8, 301–323.
- Loomes, G., Moffatt, P. G., & Sugden, R. (2002). A Microeconomic test of alternative stochastic theories of risky choice. *Journal of Risk and Uncertainty*, 24(2), 103–130.
- \*Loomes, G., & Sugden, R. (1998). Testing different stochastic specifications of risky choice. *Economica*, 65, 581–598.
- \*MacCrimmon, K., & Larsson, S. (1979). Utility theory: axioms versus paradoxes. In M. Allais & O. Hagen (Eds.), *Expected utility hypotheses and the Allais Paradox*. Dordrecht: Reidel.
- MacDonald, D. N., & Wall, J. L. (1989). An experimental study of the Allais Paradox over losses: some preliminary evidence. *Quarterly Journal of Business and Economics*, 28(4), 43–60.
- Machina, M. (1982). Expected utility' analysis without the independence axiom. *Econometrica*, 50, 277–323.
- Müller-Trede, J., Sher, S., & McKenzie, C. R. (2018). When payoffs look like probabilities: Separating form and content in risky choice. *Journal of Experimental Psychology: General*, 147(5), 662–670.
- \*Nebout, A., & Dubois, D. (2014). When Allais meets Ulysses: Dynamic axioms and the common ratio effect. *Journal of Risk and Uncertainty*, 48(1), 19–49.
- Ortmann, A. (2016). Episodes from the early history of experimentation in economics. In A. Svorencik & H. Maas (Eds.), *Witness seminar on the emergence of a field* (pp. 195–217). Springer.
- \*Quattrone, G. A., & Tversky, A. (1988). Contrasting rational and psychological analysis of political choice. *American Political Science Review*, 82(3), 719–736.
- Quiggin, J. (1981). Risk perception and risk aversion among Australian farmers. *Australian Journal of Agricultural Resource Economics*, 25(2), 160–169.
- Rockenbach, B., Sadrieh, A., & Mathauschek, B. (2007). Teams take the better risks. *Journal of Economic Behavior and Organization*, 63, 412–422.
- Rubinstein, A. (1988). Similarity and decision-making under risk. *Journal of Economic Theory*, 46, 145–153.
- \*Schmidt, U., & Neugebauer, T. (2007). Testing expected utility in the presence of errors. *Economic Journal*, 117, 470–485.
- Schmidt, U., & Seidl, C. (2014). Reconsidering the common ratio effect: The roles of compound independence, reduction, and coalescing. *Theory and Decision*, 77(3), 323–339.
- \*Schneider, M., & Shor, M. (2017). The common ratio effect in choice, pricing, and happiness tasks. *Journal of Behavioral Decision Making*, 30(4), 976–986.
- Selten, R., Sadrieh, A., & Abbink, K. (1999). Money does not induce risk neutral behavior, but binary lotteries do even worse. *Theory and Decision*, 46, 211–249.
- \*Sopher, B., & Gigliotti, G. (1993). A test of generalized expected utility theory. *Theory and Decision*, 35(1), 75–106.
- Starmer, C. (2000). Developments in non-expected utility theory: The hunt for a descriptive theory of choice under risk. *Journal of Economic Literature*, 38(2), 332–382.
- \*Starmer, C., & Sugden, R. (1989a). Probability and juxtaposition effects: An experimental investigation of the common ratio effect. *Journal of Risk and Uncertainty*, 2(2), 159–178.
- Starmer, C., & Sugden, R. (1989b). Violations of the independence axiom in common ratio problems: An experimental test of some competing hypotheses. *Annals of Operations Research*, 19, 79–102.
- Tversky, A., & Kahneman, D. (1992). Advances in prospect theory: Cumulative representation of uncertainty. *Journal of Risk and Uncertainty*, 5, 297–323.
- \*van de Kuilen, G., & Wakker, P. (2006). Learning in the Allais paradox. *Journal of Risk and Uncertainty*, 33, 155–164.
- von Neumann, J., & Morgenstern, O. (1947). *Theory of Games and Economic Behavior* (2nd ed.). Princeton University Press.

- Weber, B. J., & Chapman, G. B. (2005). The combined effects of risk and time on choice: Does uncertainty eliminate the immediacy effect? Does delay eliminate the certainty effect? *Organizational Behavior and Human Decision Processes*, 96(2), 104–118.
- \*Wu, G. (1994). An empirical test of ordinal independence. *Journal of Risk and Uncertainty*, 9(1), 39–60.

**Publisher's Note** Springer Nature remains neutral with regard to jurisdictional claims in published maps and institutional affiliations.