

MEMOIRS OF THE
SOCIETY FOR AMERICAN ARCHAEOLOGY

Number Thirteen

RICHARD B. WOODBURY, *Editor*

AMERICAN ANTIQUITY, Volume XXII, Number 4, Part 2, April, 1957

MEMOIRS OF THE
SOCIETY FOR AMERICAN ARCHAEOLOGY

Number Thirteen

PARACAS, NAZCA, AND TIAHUANACOID
CULTURAL RELATIONSHIPS IN
SOUTH COASTAL PERU

by

WILLIAM DUNCAN STRONG

PUBLISHED BY

THE SOCIETY FOR AMERICAN ARCHAEOLOGY

SALT LAKE CITY, UTAH, U.S.A.

KRAUS REPRINT CO.

Millwood, New York

1974

ACKNOWLEDGMENT

A GENEROUS GRANT BY THE COLUMBIA UNIVERSITY
COUNCIL FOR RESEARCH IN THE SOCIAL SCIENCES
MADE PUBLICATION OF THIS MEMOIR POSSIBLE.

*Reprinted with the permission of
The Society for American Archaeology*
KRAUS REPRINT CO.

A U.S. Division of Kraus-Thomson Organization Limited

Printed in U.S.A.

TABLE OF CONTENTS

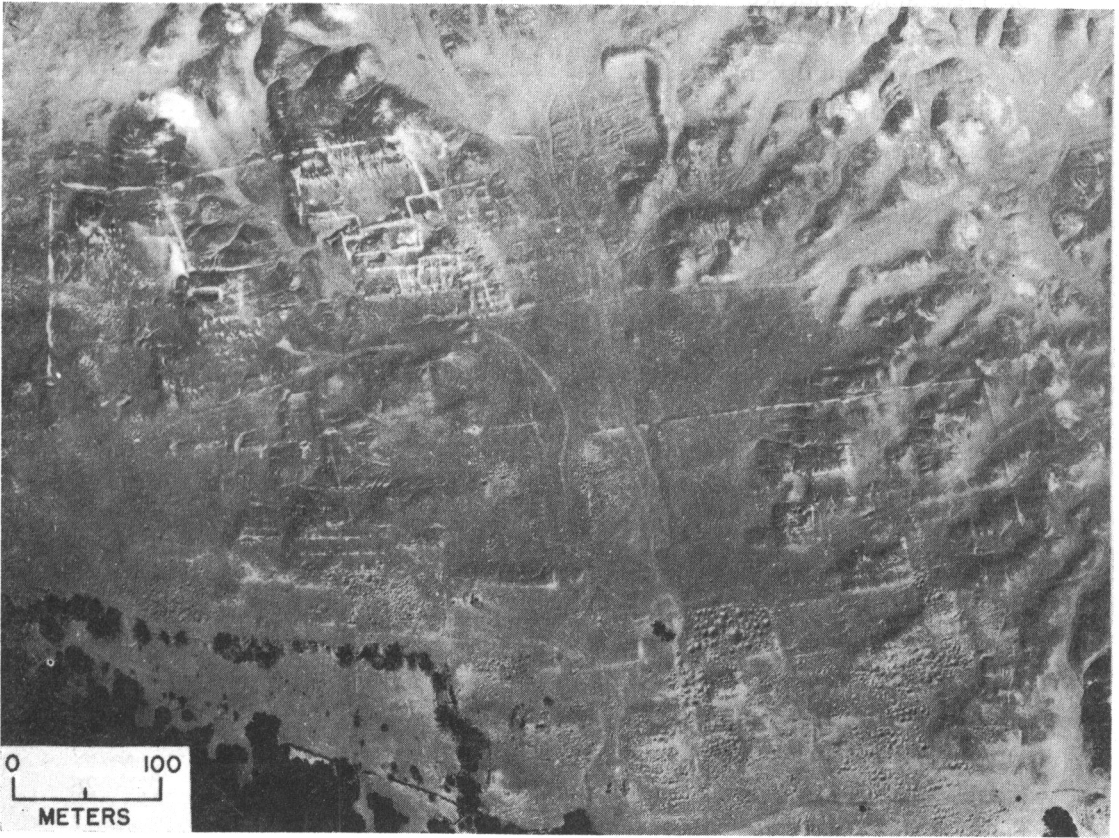
	<i>Page</i>
1. Cultural and Historical Background	1
2. The 1952-1953 Columbia University Expedition	2
3. Environmental Background	2
4. The Surface Survey and Culture Epoch Terminology	3
5. Preceramic Evidence	8
6. The Formative Epoch	11
7. The Florescent Epoch	24
8. The Epoch of Fusion	36
9. Summary	43
ADDENDUM: Recent Radiocarbon Dates from the Ica, Nazca, and Virú Valleys	45
References Cited	47

LIST OF ILLUSTRATIONS

FRONTISPIECE. Cahuachi from the air (1952)	vi
FIG. 1. Archaeological site map of the South Coast of Peru	follows 2
FIG. 2. Stone artifacts, San Nicolás III	9
FIG. 3. Burials and pottery of the Early Paracas and Late Paracas phases	12
FIG. 4. Map of Cahuachi, the Nazca "capital"	14
FIG. 5. Architectural details, Cahuachi	15
FIG. 6. Late Paracas pottery types, Cahuachi	17
FIG. 7. Late Paracas and Proto-Nazca pottery types	19
FIG. 8. Late Paracas pottery types, Cahuachi	20
FIG. 9. Proto-Nazca pottery types, Cahuachi	22
FIG. 10. Proto-Nazca pottery types, Cahuachi	23
FIG. 11. Early Nazca pottery type, Cahuachi	26
FIG. 12. Minor decorated pottery types, Cahuachi	27
FIG. 13. Middle and Late Nazca burials and associated pottery from Cahuachi	30
FIG. 14. Wood carving from Estaquería and Late Nazca burial pottery from Cahuachi	33
FIG. 15. Huaca del Loro, and pottery from Huaca del Loro phase burial, Cahuachi	37
FIG. 16. Map of the Huaca del Loro site	38
FIG. 17. Huaca del Loro pottery types, Huaca del Loro	39
FIG. 18. Early Ica (Epigonal) burial with associated pottery from Pinilla II, and Coastal Tiahuanacoid pottery	42

LIST OF TABLES

TABLE 1. Surface survey of sites in the Ica and Nazca region	4
TABLE 2. Culture sequence of the South Coast of Peru (Ica-Nazca)	7
TABLE 3. Stylistic position of the Cahuachi Polychrome style (Early Nazca)	25
TABLE 4. Radiocarbon dates	46



CAHUACHI FROM THE AIR (1952).