

Journey into the deep.



Specimen: Humpback Whale (Genus: Megaptera)
Instrument: The Naked Eye

Journey into the deeper.



Specimen: Leaf of Arabidopsis Thaliana
Instrument: Hitachi S-3500N SEM

The journey to discover and understand that which cannot be readily seen has often inspired bold exploration.

Hitachi seeks to further that journey by manufacturing leading instrumentation built on a solid foundation of reliability, technology, and technical acumen. Hitachi's nanotechnology tools — a wide variety of ELECTRON MICROSCOPES — will empower countless applications to produce stronger, faster, smarter materials that promise to enhance our lives for the better.

Hitachi High Technologies America, Inc.

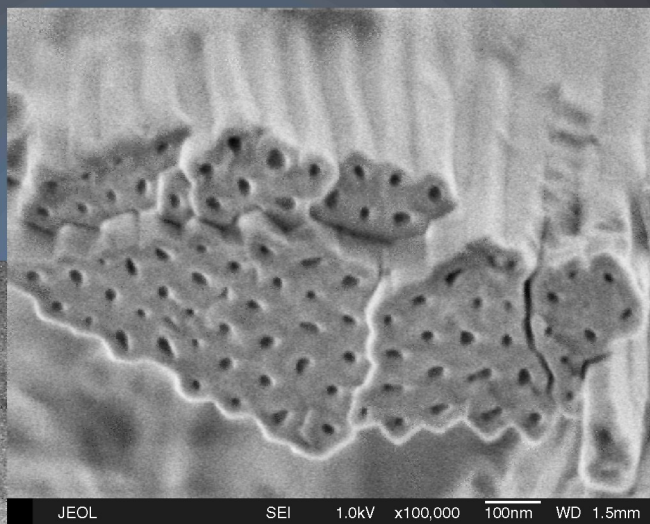
Electron Microscope Division Headquarters
5100 Franklin Drive
Pleasanton, CA 94588
Sales Phone: (800) 227-8877
Service Phone: (800) 253-3053
www.hitachi-hta.com

HITACHI
Inspire the Next

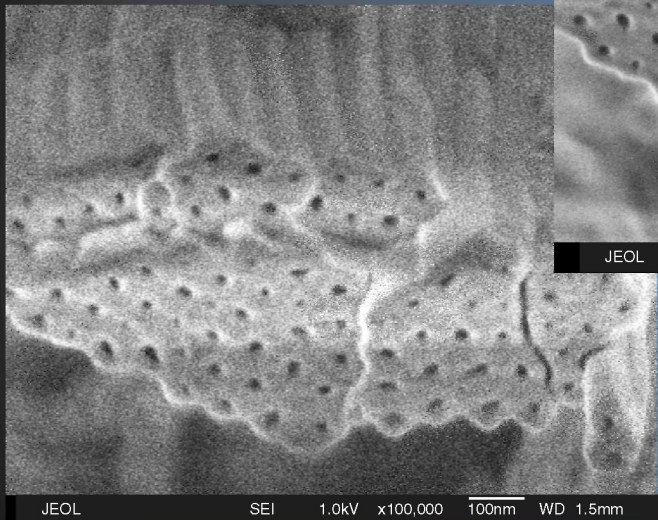
Reality Check

FE SEM for true surface details

Anodized aluminum.
Unique GB mode.
Charge-free for optimum clarity.



Anodized aluminum.
Normal SEM mode.



Clarity. See surface details as they really are.

Contrast. Reduce electron charge and enhance contrast.

Control. Absolutely the highest resolution at the lowest kV.

Suddenly, it's all clear. The JSM-7401F field emission scanning electron microscope from JEOL with unique GB mode lets you see the finest surface details. Accept nothing less if you're imaging at the extreme nanoscale. Call your sales representative for your own reality check, or visit www.jeol.com/7401f.

Another Extreme Imaging
Solution from

JEOL

Stability • Performance • Productivity

www.jeol.com

Extreme Imaging