

INFECTION CONTROL & HOSPITAL EPIDEMIOLOGY

VOLUME 27, NUMBER 10

OCTOBER 2006

EDITORIAL

- 999 **Doing The Right Thing (and Figuring Out What That Is)** • Barry M. Farr, MD, MSc

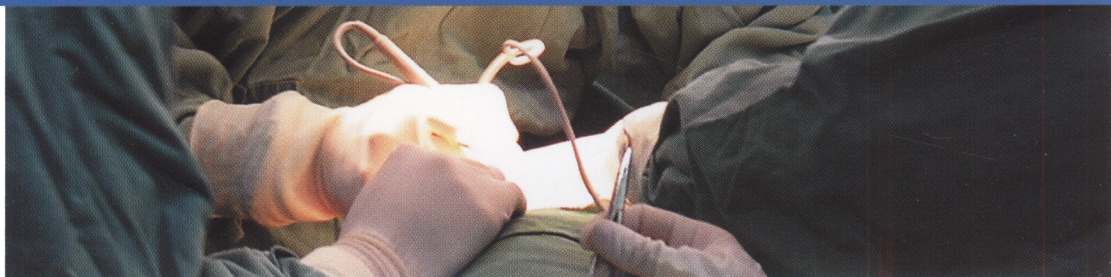
ORIGINAL ARTICLES

- 1004 **Active Surveillance for Methicillin-Resistant *Staphylococcus aureus* (MRSA) Decreases the Incidence of MRSA Bacteremia** • Pnina Shitrit, MD; Bat-Sheva Gottesman, MD; Michal Katzir, MD; Avi Kilman, MSc; Yona Ben-Nissan, BSc; Michal Chowers, MD
- 1009 **Active Screening in High-Risk Units Is an Effective and Cost-Avoidant Method to Reduce the Rate of Methicillin-Resistant *Staphylococcus aureus* Infection in the Hospital** • Megan Clancy, MD; Amy Graepler, MT; Michael Wilson, MD; Ivor Douglas, MD, MRCP(UK); Jeff Johnson, MD; Connie Savor Price, MD
- 1018 **Impact of Alcohol-Based, Waterless Hand Antiseptic on the Incidence of Infection and Colonization With Methicillin-Resistant *Staphylococcus aureus* and Vancomycin-Resistant Enterococci** • Kwan Kew Lai, DMD, MD; Sally Fontecchio, RN, BSNsgED, CIC; Zita Melvin, RN, BSN, CIC; Stephen P. Baker, MScPH
- 1025 **Characteristics of Patients With Healthcare-Associated Infection Due to SCCmec Type IV Methicillin-Resistant *Staphylococcus aureus*** • Susan L. Davis, PharmD; Michael J. Rybak, PharmD, MPH; Muhammad Amjad, PhD; Glenn W. Kaatz, MD; Peggy S. McKinnon, PharmD
- 1032 **Epidemiology of Methicillin-Resistant *Staphylococcus aureus* Colonization in a Surgical Intensive Care Unit** • David K. Warren, MD, MPH; Rebecca M. Guth, RRT, MPH; Craig M. Coopersmith, MD; Liana R. Merz, MPH; Jeanne E. Zack, RN, BSN, CIC; Victoria J. Fraser, MD
- 1041 **Molecular Characterization of Methicillin-Resistant *Staphylococcus aureus* Disseminated in a Home Care System** • R. Rozenbaum, MD, PhD; M. C. Silva-Carvalho, MSc; R. R. Souza, BSc; M. C. N. Melo, PhD; C. N. Gobbi, BSc; L. R. Coelho, BSc; R. L. Ferreira, MSc; B. T. Ferreira-Carvalho, PhD; A. L. Schuenck, RN; F. M. C. S. Neves, RN; L. R. P. O. F. Silva, RN; A. M. S. Figueiredo, PhD
- 1051 **Community-Associated Strains of Methicillin-Resistant *Staphylococcus aureus* as the Cause of Healthcare-Associated Infection** • Blanca E. Gonzalez, MD; Adriana M. Rueda, MD; Samuel A. Shelburne, III, MD; Daniel M. Musher, MD; Richard J. Hamill, MD; Kristina G. Hultén, PhD
- 1057 **Emergence of Community-Associated Methicillin-Resistant *Staphylococcus aureus* Infection Among Patients With End-Stage Renal Disease** • Leonard B. Johnson, MD; Anilrudh A. Venugopal, MD; Joan Pawlak, BS; Louis D. Saravolatz, MD
- 1063 **Carriage of Multiple Subtypes of Methicillin-Resistant *Staphylococcus aureus* by Intensive Care Unit Patients** • Megan S. C. Lim, B Biomed Sci (Hons); Caroline L. Marshall, MBBS, FRACP, PhD; Denis Spelman, MBBS, FRACP, FRCPA, MPH
- 1068 **Surveillance for Vancomycin-Resistant Enterococci: Type, Rates, Costs, and Implications** • Brooke N. Shadel, PhD, MPH; Laura A. Puzniak, PhD, MPH; Kathleen N. Gillespie, PhD; Steven J. Lawrence, MD; Marin Kollef, MD; Linda M. Mundy, MD

CONTENTS CONTINUED INSIDE



INFECTION CONTROL & HOSPITAL EPIDEMIOLOGY



The Society for Healthcare Epidemiology of America (SHEA) and the University of Chicago Press are pleased to inaugurate a publishing alliance to bring greater visibility to important research in healthcare epidemiology and infection control. Written by and for infection control practitioners, this peer-reviewed journal will provide you with a monthly forum for all your critical research needs.

Immediate benefits of the SHEA/UCP partnership

- Articles in full-text HTML and PDF, fully searchable
- Online-only features such as links to PubMed, the *Journal of Infectious Diseases*, and *Clinical Infectious Diseases*
- E-mail content alerts with HTML links
- RSS feeds



The University of Chicago Press

Journals Division • P.O. Box 37005 • Chicago, IL 60637

www.journals.uchicago.edu/ICHE

4/06

INFECTION CONTROL & HOSPITAL EPIDEMIOLOGY

VOLUME 27, NUMBER 10

OCTOBER 2006

CONTENTS CONTINUED FROM COVER

- 1076 **Molecular Characterization of Vancomycin-Resistant Enterococci from Clinical and Surveillance Specimens** • Ji Young Huh, MD, PhD; Wee Gyo Lee, MD, PhD; Hye Young Jin, RN
- 1081 **Role of Horizontal Transfer of the Transposon Tn1546 in the Nosocomial Spread of vanA Vancomycin-Resistant Enterococci at a Tertiary Care Hospital in Korea** • Soo Jin Yoo, MD, PhD; Heungsup Sung, MD; Young-Uk Cho, MD; Mi-Na Kim, MD, PhD; Chik Hyun Pai, MD, PhD; Yang Soo Kim, MD, PhD
- 1088 **Antimicrobial Use Control Measures to Prevent and Control Antimicrobial Resistance in US Hospitals** • Alan J. Zillich, PharmD; Jason M. Sutherland, PhD; Stephen J. Wilson, MD, MPH; Daniel J. Diekema, MD, MS; Erika J. Ernst, PharmD; Thomas E. Vaughn, PhD; Bradley N. Doebbeling, MD, MSc
- REVIEW ARTICLES**
- 1096 **What To Think If the Results of the National Institutes of Health Randomized Trial of Methicillin-Resistant *Staphylococcus aureus* and Vancomycin-Resistant *Enterococcus* Control Measures Are Negative (and Other Advice to Young Epidemiologists): A Review and an Au Revoir** • Barry M. Farr, MD, MSc
- 1107 **Use of Germicides in the Home and the Healthcare Setting: Is There a Relationship Between Germicide Use and Antibiotic Resistance?** • David J. Weber, MD, MPH; William A. Rutala, PhD, MPH
- CONCISE COMMUNICATIONS**
- 1120 **Use of Gaseous Ozone for Eradication of Methicillin-Resistant *Staphylococcus aureus* From the Home Environment of a Colonized Hospital Employee** • Hero E. L. de Boer, MD; Carla M. van Elzelingen-Dekker, BSc; Cora M. F. van Rheeunen-Verberg, BSc; Lodewijk Spanjaard, MD, PhD
- 1123 **How Often Do Asymptomatic Healthcare Workers Cause Methicillin-Resistant *Staphylococcus aureus* Outbreaks? A Systematic Evaluation** • Ralf-Peter Vonberg, MD; Sabine Stamm-Balderjahn, MD; Sonja Hansen, MD; Irina Zuschneid, MD; Henning Rüden, MD; Michael Behnke, PhD; Petra Gastmeier, MD
- 1128 **Association Between Hand Hygiene Compliance and Methicillin-Resistant *Staphylococcus aureus* Prevalence in a French Rehabilitation Hospital** • Emmanuelle Girou; Patrick Legrand; Sophean Soing-Altrach; Astrid Lemire; Céline Poulain; Alexandra Allaire; Latifa Tkoub-Scheirlinck; Steeve Ho Tam Chai; Catherine Dupeyron; Catherine-Marie Loche
- 1131 **The Decrease in Healthcare-Associated Methicillin-Resistant *Staphylococcus aureus* Infections and Savings From Glycopeptide Use** • Diler Coşkun, MD; Jale Aytaç, MD
- 1133 **Epidemiology of Community-Acquired Methicillin-Resistant *Staphylococcus aureus* Skin Infections Among Healthcare Workers in an Outpatient Clinic** • Cecilia P. Johnston, MD, MHS; Lisa Cooper, RN; William Ruby, DO; Karen C. Carroll, MD; Sara E. Cosgrove, MD, MS; Trish M. Perl, MD, MSc
- 1137 **Incidence and Epidemiology of Methicillin-Resistant *Staphylococcus aureus* Infection in a Saudi Arabian Hospital, 1999-2003** • Jaffar A. Al-Tawfiq, MBBS, FACP

ERRATUM

- 1140 **Warren et al. (2006; 27:1032-1040)**

An Official Publication of the Society for Healthcare Epidemiology of America

EDITOR

William R. Jarvis, MD • Hilton Head, SC

DEPUTY EDITOR

David P. Calfee, MD, MS • New York, NY

ASSISTANT EDITOR

Preeti N. Malani, MD, MSJ • Ann Arbor, MI

SENIOR ASSOCIATE EDITORS

C. Glen Mayhall, MD • Galveston, TX
Gina Pugliese, RN, MS • Chicago, IL
William Schaffner, MD • Nashville, TN

ASSOCIATE EDITORS

Donald A. Goldmann, MD • Boston, MA
Didier Pittet, MD, MS • Geneva, Switzerland
Andreas Widmer, MD, MS • Basel, Switzerland

SECTION EDITORS

Beyond Infection Control: The New Hospital Epidemiology

Wing Hong Seto, MD • Hong Kong

Disinfection and Sterilization

William A. Rutala, PhD, MPH • Chapel Hill, NC

From the Laboratory

Marcus Zervos, MD • Royal Oak, MI

Infections in Immunocompromised Patients

Kent Sepkowitz, MD • New York, NY

Information Management

John A. Sellick, DO • Amherst, NY

Issues in Surgery

James T. Lee, MD, PhD • St. Paul, MN

Medical News

Gina Pugliese, RN, MS • Chicago, IL
Martin S. Favero, PhD • Irvine, CA

Practical Healthcare Epidemiology

Loreen A. Herwaldt, MD • Iowa City, IA

Statistics for Hospital Epidemiology

David Birnbaum, PhD, MPH • Sidney, British Columbia

Topics in Long-Term Care

Philip W. Smith, MD • Omaha, NE

Topics in Occupational Medicine

David Weber, MD, MPH • Chapel Hill, NC

MANAGING EDITOR

Gordon Rudy, PhD, ELS • Chicago, IL

EDITORIAL ADVISORY BOARD

Miriam Alter, PhD, MD • Atlanta, GA
Lennox Archibald, MD, FRCP • Alachua, FL
Hilary Babcock, MD • St. Louis, MO
Elise M. Beltrami, MD, MPH • Decatur, GA
Marc J. M. Bonten, MD, PhD • Utrecht, The Netherlands
John M. Boyce, MD • New Haven, CT
Christian Brun-Buisson, MD • Creteil, France
John P. Burke, MD • Salt Lake City, UT
Yehuda Carmeli, MD, MPH • Tel Aviv, Israel
Carol Chenoweth, MD • Ann Arbor, MI
Sara E. Cosgrove, MD, MS • Baltimore, MD
Donald E. Craven, MD • Burlington, MA
Burke A. Cunha, MD • Mineola, NY
Erika D'Agata, MD, MPH • Boston, MA
Patch Dellinger, MD • Seattle, WA
Daniel Diekema, MD • Iowa City, IA
Charles E. Edmiston, Jr., PhD • Milwaukee, WI
Theodore C. Eickhoff, MD • Denver, CO
Jean Yves Fagon, MD, MPH • Paris, France
Mark Farrington, MA, FRCPATH • Cambridge, UK
Richard A. Garibaldi, MD • Farmington, CT
Petra Gastmeier, MD • Hanover, Germany
Dale N. Gerding, MD • Hines, IL
Stephan Harbarth, MD, MS • Geneva, Switzerland
Anthony D. Harris, MD, MPH • Baltimore, MD

David K. Henderson, MD • Bethesda, MD
Peter N. R. Heselstine, MD • San Juan, CA
Karen Hoffmann, RN, CIC, MS • Chapel Hill, NC
Janine Jagger, MPH, PhD • Charlottesville, VA
John A. Jernigan, MD, MS • Atlanta, GA
Ebbing Lautenbach, MD, MPH • Philadelphia, PA
L. Clifford McDonald, MD • Atlanta, Georgia
Allison McGeer, MD • Toronto, Ontario
John E. McGowan, Jr., MD • Atlanta, GA
Leonard A. Mermel, DO, ScM • Providence, RI
Robert R. Muder, MD • Pittsburgh, PA
Carlene A. Muto, MD, MS • Pittsburgh, PA
Joseph M. Mylotte, MD, CIC • Buffalo, NY
Juhani Ojajarvi, MD • Helsinki, Finland
Michael T. Osterholm, PhD, MPH • Minneapolis, MN
David L. Paterson, MBBS, FRACP • Pittsburgh, PA
Jan Evans Patterson, MD • San Antonio, TX
Sindy M. Paul, MD • Yardley, PA
David A. Pegues, MD • Los Angeles, CA
Michael A. Pfaller, MD • Iowa City, IA
Isaam Raad, MD • Houston, TX
Jordi Rello, MD, PhD • Tarragona, Spain
Manfred L. Rotter, MD, DipBact • Vienna, Austria
Henning Rüden, MD • Berlin, Germany
Lisa Saiman, MD, MPH • New York, NY
Syed A. Sattar, PhD • Ottawa, Ontario
William E. Scheckler, MD • Madison, WI
Lynne M. Schulster, PhD • Atlanta, GA
Andrew E. Simor, MD • Toronto, Ontario
Denis W. Spelman, MD • Prahan, Victoria, Australia
Susan Springthorpe, MSc • Ottawa, Ontario
Jeffrey R. Starke, MD • Houston, TX
Janet E. Stout, PhD • Pittsburgh, PA
Michael L. Tapper, MD • New York, NY
Clyde Thornsberrry, PhD • Franklin, TN
Jerome Tokars, MD, PhD • Atlanta, GA
William Trick, MD • Chicago, IL
Antoni Trilla, MD, PhD • Barcelona, Spain
Robert A. Weinstein, MD • Chicago, IL

Infection Control and Hospital Epidemiology (ISSN 0899-823X) is published monthly by the University of Chicago Press, 1427 East 60th St., Chicago, IL 60637-2954 (<http://www.journals.uchicago.edu/ICHE/>). The editorial offices are in Chicago, Illinois.

Editorial Office

Communications should be addressed to the Editor, *Infection Control and Hospital Epidemiology*, 1427 E. 60th St, Chicago, IL 60637-2954; (e-mail: iche@press.uchicago.edu; telephone: [773] 702-2448, fax: [773] 753-4247). Contributors should consult the Information for Authors, which is available at the *ICHE* Web site.

Advertising

Publication of an advertisement in *Infection Control and Hospital Epidemiology* does not imply endorsement of its claims by the Society for Healthcare Epidemiology of America, by the Editor, or by the University of Chicago. Correspondence regarding advertising should be addressed to the business office in Chicago (see above).

Permissions

The copyright code on the first page of an article in this journal indicates the copyright owner's consent that copies of the article may be made only for personal or internal use or for the personal or internal use of specific clients and provided that the copier pays the stated per-copy fee through the Copyright Clearance Center (CCC), 222 Rosewood Dr., Danvers, MA 01923. To request permission for other kinds of copying, such as copying for general distribution, for advertising or promotional purposes, for creating new collective works, or for resale, please write to the Permissions Department, University of Chicago Press, 1427 East 60th St., Chicago, IL 60637-2954. For articles in the public domain, permission to reprint should be obtained from the author.

Subscriptions

Subscription orders and correspondence should be addressed to the University of Chicago Press, P.O. Box 37005, Chicago, IL 60637-2954. Checks should be made out to the University of Chicago Press. All orders must be in US currency. Telephone: (8:00 A.M.–5:00 P.M. Central Standard Time, Monday–Friday) US and Canada toll free, (877) 705-1878; Rest of World, (773) 753-3347. Fax: US and Canada toll free, (877) 705-1879; Rest of World, (773) 753-0811. E-mail: subscriptions@press.uchicago.edu; Web site: <http://www.journals.uchicago.edu>.

Subscription rates (1 year) for *Infection Control and Hospital Epidemiology (ICHE)*:

	Domestic	Foreign With Air Freight	Canadian
Institutions	350.00	399.00	389.50
Individuals	150.00	199.00	175.50
Fellows	55.00	104.00	73.85

Note: All rates in US dollars. All new subscriptions will begin with the January issue. All rates include postage. Canadian rates include 7% GST. *ICHE* single copies: institutions, \$30.00; individuals, \$14.00. Japanese subscription agent: Kinokuniya Company Ltd.

Postmaster: Send address changes to *Infection Control and Hospital Epidemiology*, University of Chicago Press, P.O. Box 37005, Chicago, IL 60637-2954.

Periodicals postage paid at Chicago, Illinois, and at an additional mailing office.

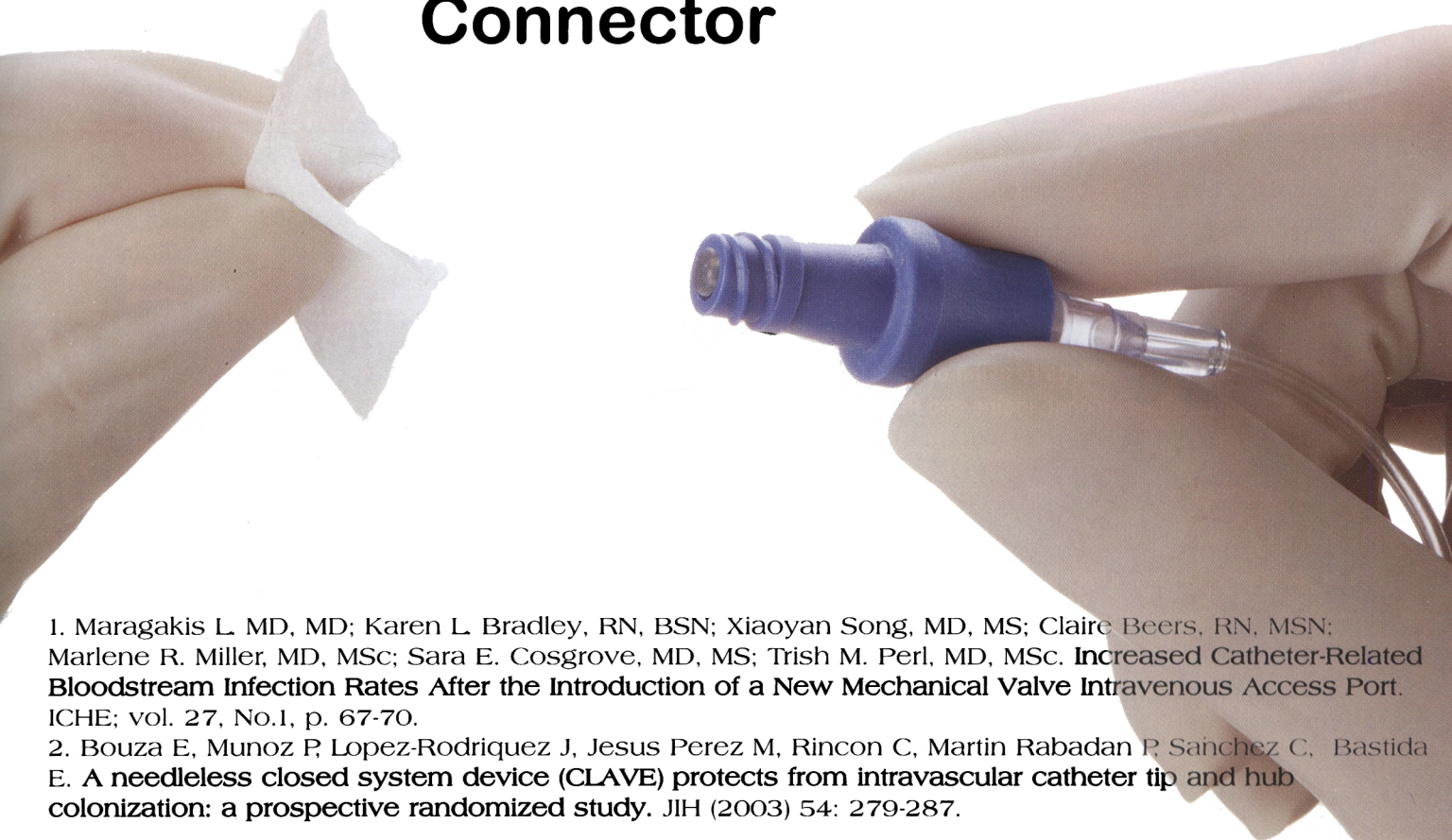
Published by the University of Chicago Press, Chicago, IL. © 2006 by The Society for Healthcare Epidemiology of America. All rights reserved. This publication is printed on acid-free paper.

**Concerned that
your Needleless
connector could be
contributing to**

BSI?

Recent publications identify only one product which has the proven track record for infection control, and has also been proven to reduce contamination of the catheter hub.^{1,2}

CLAVE[®] NeedleFree Connector



1. Maragakis L MD, MD; Karen L Bradley, RN, BSN; Xiaoyan Song, MD, MS; Claire Beers, RN, MSN; Marlene R. Miller, MD, MSc; Sara E. Cosgrove, MD, MS; Trish M. Perl, MD, MSc. **Increased Catheter-Related Bloodstream Infection Rates After the Introduction of a New Mechanical Valve Intravenous Access Port.** ICHE; vol. 27, No.1, p. 67-70.

2. Bouza E, Munoz P, Lopez-Rodriguez J, Jesus Perez M, Rincon C, Martin Rabadan P, Sanchez C, Bastida E. **A needleless closed system device (CLAVE) protects from intravascular catheter tip and hub colonization: a prospective randomized study.** JIH (2003) 54: 279-287.

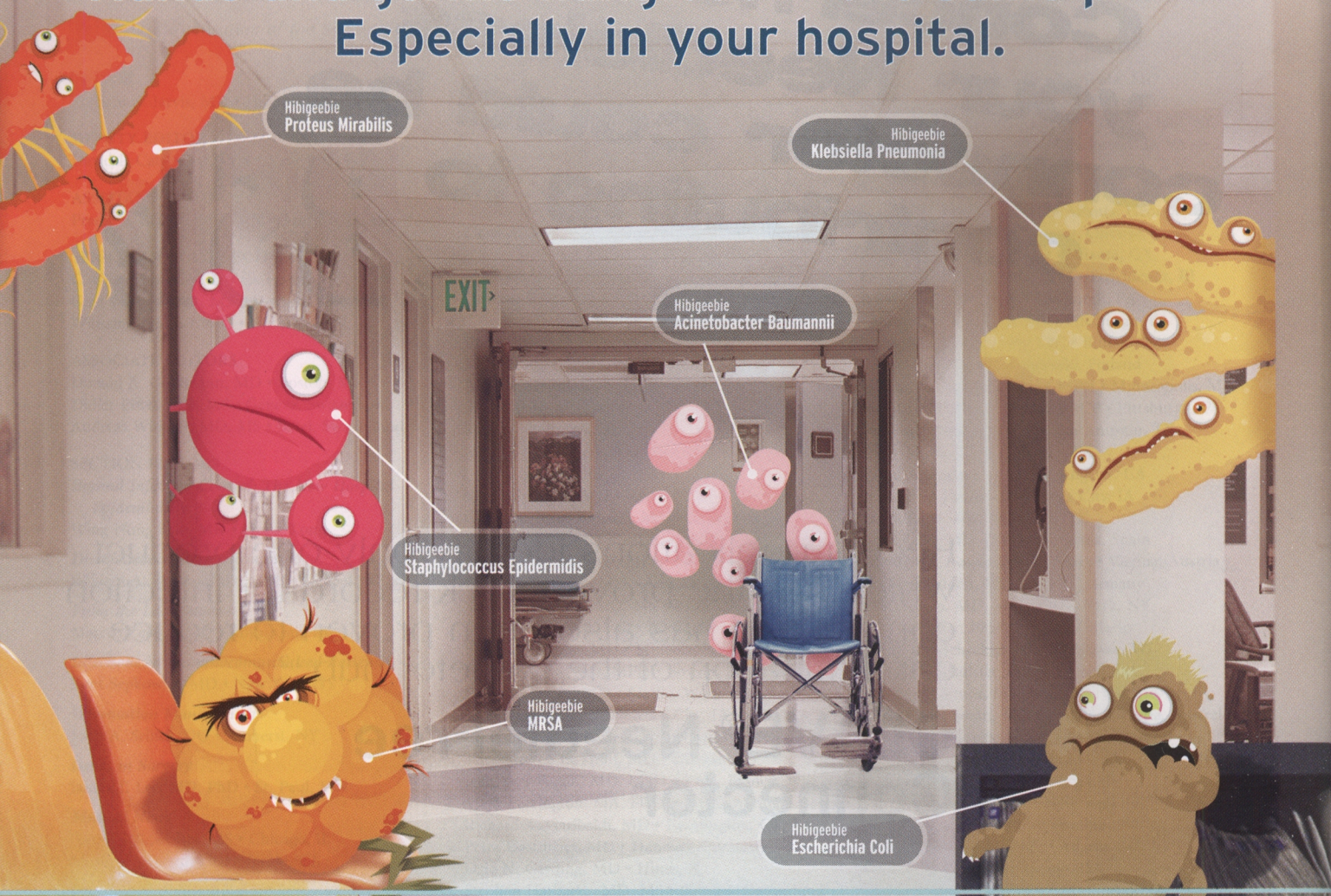


ICU Medical, Inc.

951 Calle Amanecer, San Clemente, CA 92673, U.S.A.

Tel: +1 949 366 2183 • 800 824 7890 • www.icumed.com

Hands and germs hang out in the same places. Especially in your hospital.



Hands are the first, and last, lines of defense against the spread of pathogens. It's not a job for just any antiseptic. The CDC advises that alcohol alone is not appropriate when hands are visibly dirty or contaminated with proteinaceous materials.¹

Compare washing with Hibiclens to using other antiseptic solutions like alcohol, iodine and PCMX:

- Broad-spectrum residual action lasts up to 6 hours after washing.²
- Efficacy is **not** compromised by contact with organic matter like blood.³
- Proprietary formulation is gentler on your skin.⁴
- For 34 years, the standard by which all others are compared.
- Removes dirt and debris leaving hands clean.
- With Hibiclens as your first, and last, wash of the day, you'll have one less thing to worry about.



Kill the Hibigeebies with
HIBICLENS[®]
Antimicrobial Antiseptic Skin Cleanser



¹Guideline for Hand Hygiene in Health-Care Settings. Recommendations of the Healthcare Infection Control Practices Advisory Committee and the HICPAC/SHEA/APIC/IDSA Hand Hygiene Task Force. October 25, 2002 / Vol. 51 / No. RR-16. Accessed at: <http://www.cdc.gov/mmwr/PDF/rr/rr5116.pdf> on 18 September 2005. ²Regent Medical Study #030917-150 ³Independent Lab Test Time-Kill Study 5 Minutes S. epidermidis ATCC #12228, Protocol #040907-150 ⁴PRACS report #R05-0225 and R05-0871. Hibiclens, Hibigeebies, the Hibiclens logo and Mölnlycke are registered trademarks of Mölnlycke Group of companies. Distributed by Mölnlycke Health Care US, LLC, Norcross, Georgia 30092. © 2006 Regent Medical Limited. All rights reserved. 1.800.843.8497 www.hibigeebies.com