

## Erythrocyte fatty acid profiles can predict acute non-fatal myocardial infarction

Yongsoon Park<sup>1\*</sup>, Jeehyun Lim<sup>1</sup>, Jaeung Lee<sup>2</sup> and Soon-gil Kim<sup>2</sup>

<sup>1</sup>Department of Food and Nutrition, Hanyang University, Seoul, South Korea

<sup>2</sup>Cardiology Division, Department of Internal Medicine, Hanyang University Kuri Hospital, Kuri, South Korea

(Received 27 January 2009 – Revised 11 April 2009 – Accepted 24 April 2009 – First published online 9 June 2009)

The risk of CHD has been linked to *n*-3 and *trans*-fatty acids. The purpose of the present study was to evaluate the hypothesis that lower *n*-3 fatty acids and higher *trans*-fatty acids in erythrocytes are associated with an increased risk of acute non-fatal myocardial infarction (MI), and that fatty acid profiles can discriminate MI cases from controls. Fifty cases with acute non-fatal MI and fifty age- and sex-matched controls without MI were recruited. The Omega-3 Index (the sum of EPA and DHA in erythrocytes) was significantly lower in cases than controls (9.57 (SEM 0.28) v. 11.81 (SEM 0.35) %;  $P < 0.001$ ), while total *trans*-fatty acids were significantly higher (1.01 (SEM 0.04) v. 0.56 (SEM 0.03) %;  $P < 0.001$ ). The Omega-3 Index was associated with decreased risk of MI (OR 0.08 (95% CI 0.02, 0.38);  $P = 0.001$ ), while total *trans*-fatty acids were associated with an increased risk of MI (OR 72.67 (95% CI 6.68, 790.74);  $P < 0.001$ ). The area under the receiver operating characteristic curve of fatty acid profiles was larger than that for traditional risk factors, suggesting that fatty acid profiles make a higher contribution to the discrimination of MI cases from controls compared with modified Framingham risk factors. In conclusion, a higher Omega-3 Index and lower *trans*-fatty acids in erythrocytes are associated with a decreased risk of MI. Furthermore, fatty acid profiles improve discrimination of acute non-fatal MI compared with established risk factors.

### Lipidome: Myocardial infarction: *n*-3 Fatty acids: *Trans*-fatty acids: Risk factors

The presence of long-chain *n*-3 fatty acids such as EPA (20:5*n*-3) and DHA (22:6*n*-3) in the diet is associated with a lower risk of CHD<sup>(1)</sup>. The Diet and Reinfarction Trial (DART)<sup>(2)</sup>, Gruppo Italiano per lo Studio della Sopravvivenza nell'Infarto Miocardico (GISSI)-Prevenzione (Italian group for the study of the survival of myocardial infarction)<sup>(3)</sup> and the Japan EPA Lipid Intervention Study (JELIS)<sup>(4)</sup> have shown that oily fish, EPA and DHA, and EPA alone significantly reduce cardiac death, but do not significantly affect the risk of non-fatal CHD. The association between EPA and DHA and the risk of non-fatal myocardial infarction (MI) is, however, unclear. Higher fish intake is significantly associated with reduced risk for non-fatal MI<sup>(5)</sup>, but the associations between EPA and DHA levels in erythrocytes and reduced risk for non-fatal MI were not significant in the Nurses' Health cohort study<sup>(6)</sup>. Two cohort studies of men also found non-significant relationships between fish intake and the risk of non-fatal MI<sup>(7,8)</sup>. Therefore, despite intensive investigations into the association between *n*-3 fatty acids and non-fatal MI, no clear pattern has emerged.

The Framingham risk score is the most widely used system for CHD risk prediction<sup>(9,10)</sup>, but additional markers are required. The amount of long-chain *n*-3 fatty acids in erythrocyte membranes, as assessed by the Omega-3 Index (sum of EPA and DHA in erythrocytes), was shown to be a significant

and independent discriminator of CHD<sup>(11)</sup>. Other studies have shown that fatty acids, particularly *trans*-fatty acids<sup>(12)</sup> or *n*-6 fatty acids<sup>(13)</sup>, are positively associated with MI risk. However, the relationship between the fatty acid profile and the risk of non-fatal MI has not been investigated, even though the fatty acid profile or 'lipidome' may be key to identifying MI diet-related risk because fatty acids are associated with systemic inflammation, endothelial dysfunction and lipoproteins, all of which have previously been demonstrated to be independent risk factors for CHD<sup>(14–16)</sup>.

To help elucidate the association between *n*-3 fatty acids and acute non-fatal MI, we determined if the Omega-3 Index is lower in patients with acute non-fatal MI compared with controls. Furthermore, we examined whether fatty acid profiles can independently predict non-fatal MI cases and add to the predictive power of the Framingham risk score.

### Subjects and methods

#### Subjects

Subjects were recruited consecutively from acute non-fatal MI patients admitted to Hanyang University Kuri Hospital between November 2006 and May 2008. Cases consisted of patients diagnosed with their first case of ST-segment

**Abbreviations:** ALA,  $\alpha$ -linolenic acid; MI, myocardial infarction; Omega-3 Index, sum of EPA and DHA in erythrocytes.

\* **Corresponding author:** Professor Yongsoon Park, fax +82 02 2292 1226, email yongsoon@hanyang.ac.kr

elevated MI. Control subjects were age- and sex-matched to the case subjects; patients were excluded if they had a history of CHD, cancer, hyperlipidaemia or diabetes. The present study was conducted according to the guidelines laid down in the Declaration of Helsinki and all procedures involving human subjects and patients were approved by the institutional review board of Hanyang University Kuri Hospital, and informed, written consent was obtained from all participants. Anthropometric data, medical history and socio-economic status were obtained from both medical chart reviews and interviews.

#### Laboratory measurements

Fasting blood samples were collected in EDTA and serum separator (SST) blood tubes during the day of admission, centrifuged and then divided into samples for storage at  $-80^{\circ}\text{C}$ . Erythrocytes were directly methylated by adding boron trifluoride methanol-benzene (B1252; Sigma-Aldrich, St Louis, MO, USA) and heated for 10 min at  $100^{\circ}\text{C}$ . Fatty acids methyl esters were analysed by GC (Shimadzu 2010AF; Shimadzu Scientific Instrument, Kyoto, Japan) with a 100 m SP2560 capillary column (Supelco, Bellefonte, PA, USA). Fatty acids were identified by comparison with known standards (GLC-727; Nu-Check Prep, Elysian, MN, USA). In the standard, the *trans*-18:1 peak was a mixture of *trans*-18:1*n*-12, *trans*-18:1*n*-9 and *trans*-18:1*n*-7, while the *trans*-18:2*n*-6 peak contained *trans,trans*-18:2*n*-6. The Omega-3 Index was calculated as the sum of erythrocyte concentrations of EPA and DHA and expressed as percentage of total fatty acids in erythrocyte membrane<sup>(11)</sup>. The quality-control sample comprised pooled erythrocytes, and the CV was 5.6%.

Plasma leptin (human leptin; Invitrogen Inc., Carlsbad, CA, USA), adiponectin (Human Adiponectin/Acrp30 Immunoassay; R&D Systems Inc., Minneapolis, MN, USA) and insulin levels (human insulin; Invitrogen Inc.) were measured by ELISA. Serum lipid profiles (TBA-30FR; Toshiba, Tokyo, Japan), blood chemicals (Coulter LH 750 analyser; Beckman Coulter Inc., Fullerton, CA, USA), liver function (Variant; Bio-RAD, Hercules, CA, USA) and high-sensitivity C-reactive protein concentrations (Wr-CRP Advia 1650; Bayer, Berkeley, CA, USA) were measured with autoanalysers.

#### Statistical analysis

Continuous variables were expressed as mean values with their standard errors to compare cases and controls using independent *t* tests. Proportions of nominal variables were compared using the  $\chi^2$  test and correlation between variables was tested by partial correlation analysis after adjusting for age and sex. Fatty acids were categorised into tertiles based on control values. Binary logistic regression was adjusted for matching variables and used to find an association between baseline concentration and dependent factors. Analyses of fatty acids such as EPA,  $\alpha$ -linolenic acid (ALA; 18:3*n*-3), *trans*-18:1*n*-9 (*trans*-oleic acid) and 20:4*n*-6 (arachidonic acid) were developed using stepwise selection to reduce the number of fatty acids to a subset of the ones with greatest impact. The calculation of the Framingham risk scores includes age, sex, smoking status, total cholesterol, HDL-cholesterol, and a history of diabetes and hypertension<sup>(17)</sup>.

A combination model was developed that included the fatty acids selected in multivariable logistic regression and the Framingham risk score used in the multivariable logistic regression. The area under the receiver operating characteristic curve was determined to compare the explanatory power of fatty acids, Framingham risk score, and a combination of fatty acids and Framingham risk score. A *P* value of  $<0.05$  was considered statistically significant. Statistical analysis was performed using SPSS version 12.0 (SPSS Inc., Chicago, IL, USA).

## Results

### Subject characteristics

The characteristics of subjects are shown in Table 1. There was a greater incidence of a history of diabetes and a family history of CHD in the cases compared with the controls. Although not significant, BMI was higher in the cases than the controls. In addition, sex, age, education level, exercise, smoking, drinking, period of smoking and drinking, and history of hypertension did not differ significantly between the cases and the controls.

### Metabolic parameters

Leucocyte counts, the aspartic acid transaminase:alanine transaminase ratio, and levels of aspartic acid transaminase, total cholesterol, LDL-cholesterol, high-sensitivity C-reactive

**Table 1.** Characteristics of the study subjects  
(Mean values with their standard errors or numbers of subjects)

	Cases ( <i>n</i> 50)		Controls ( <i>n</i> 50)		<i>P</i>
	Mean	SEM	Mean	SEM	
Sex ( <i>n</i> )					0.509
Male	37		34		
Female	13		16		
Age (years)	58.1	1.7	54.6	2.1	0.202†
BMI ( $\text{kg}/\text{m}^2$ )	24.6	0.4	23.2	0.7	0.081†
Exercise ( <i>n</i> )					0.316
No	21		26		
Yes	29		24		
Smoking ( <i>n</i> )					0.836
No	18		19		
Yes	32		31		
Period of smoking (years)	32.1	1.5	26.2	2.8	0.064†
Alcohol drinking ( <i>n</i> )					0.410
No	17		21		
Yes	33		29		
Period of alcohol drinking (years)	28.7	3.6	26.5	2.9	0.925†
History of hypertension ( <i>n</i> )					0.829
No	35		34		
Yes	15		16		
History of diabetes ( <i>n</i> )					0.027
No	35		44		
Yes	15*		6		
Family history of CHD ( <i>n</i> )					0.027
No	43		49		
Yes	7*		1		

\*  $P < 0.05$  ( $\chi^2$  test).

† By independent *t* test.

protein and leptin were significantly higher in the cases than the controls ( $P < 0.05$ ), while adiponectin levels were significantly lower in the cases than the controls ( $P = 0.037$ ; Table 2). Erythrocyte and platelet counts, Hb, packed cell volume, mean platelet volume, Hb-A1c, albumin, Ca, fasting glucose, blood urea N, alanine transaminase, TAG and HDL-cholesterol levels were not significantly different between groups.

#### Erythrocyte fatty acid composition

The Omega-3 Index was significantly lower in the cases than the controls (9.57 v. 11.81 %;  $P < 0.001$ ), while total *trans*-fatty acids were significantly higher (1.01 (SEM 0.04) v. 0.56 (SEM 0.03) %;  $P < 0.001$ ). EPA and ALA levels were also significantly lower in the cases than the controls, but total *trans*-fatty acids, *trans*-18:1, arachidonic acid, 16:0 and 22:4n-6 were significantly higher in the cases than the controls. Multivariable-adjusted regression analysis showed that the Omega-3 Index, EPA and ALA were negatively ( $P < 0.05$ ) associated with the risk of acute non-fatal MI after adjusting for age, sex, history of diabetes, family history of CHD, smoking status, hypertension status, and levels of glucose, total cholesterol and HDL-cholesterol (Table 3). However, total *trans*-fatty acids, *trans*-18:1 and arachidonic acid were positively associated with the risk of acute non-fatal MI after adjusting for all confounding variables. The Omega-3 Index, and EPA and ALA levels were negatively related to the concentration of high-sensitivity C-reactive protein, but total *trans*-fatty acids and *trans*-oleic acids were positively related to the concentration of high-sensitivity C-reactive protein concentration (Table 4). *Trans*-oleic acid

was significantly related to the levels of leptin and adiponectin, respectively, and *trans*-linoleic acid was positively related to the concentration of TAG. The Omega-3 Index, and ALA and EPA levels were negatively related to the concentration of glucose, while only EPA was negatively related to the total cholesterol level. Linoleic acid was negatively related to TAG, but was positively associated with LDL- and HDL-cholesterol concentrations.

The ability of risk scores, such as the traditional risk score and the fatty acids risk score including EPA, ALA, *trans*-oleic acid and arachidonic acid, to discriminate cases from controls was compared, both alone and in combination (Fig. 1). The area under the receiver operating characteristic curve of the fatty acid risk score alone (0.97) was better than that of the traditional risk score (0.68) as well as the combination of the two risk scores (0.95).

#### Discussion

In the present study, the fatty acid composition of erythrocytes was associated with the risk of occurrence of acute non-fatal MI. The risk of acute non-fatal MI was significantly reduced by a higher Omega-3 Index, *n*-3 fatty acids, EPA and ALA after adjusting for age, sex, history of diabetes, family history of CHD, smoking status, hypertension status, and levels of glucose, total cholesterol and HDL-cholesterol. In contrast, higher levels of total *trans*-fatty acids, *trans*-18:1 and 20:4n-6 were associated with an increased risk of acute non-fatal MI. To the best of our knowledge, the present study is the first to demonstrate that the fatty acid profile (lipidome) of erythrocytes can allow discrimination between acute non-fatal MI cases and controls. Furthermore, the fatty

**Table 2.** Metabolic parameters in cases and controls (Mean values with their standard errors)

	Cases (n 50)		Controls (n 50)		P
	Mean	SEM	Mean	SEM	
Leucocytes ( $\times 10^6/\text{mm}^3$ )	11.45***	0.56	7.76	0.60	<0.001
Erythrocytes ( $\times 10^6/\text{mm}^3$ )	4.31	0.10	4.18	0.09	0.334
Hb (g/l)	137.9	3.0	133.2	3.0	0.276
Packed cell volume (%)	39.33	1.12	38.54	0.79	0.566
Platelets ( $\times 10^9/\text{ml}$ )	241.80	8.89	249.90	12.38	0.596
Procalcitonin (%)	0.19	0.01	0.20	0.01	0.435
Mean platelet volume (fl)	7.86	0.09	7.90	0.12	0.424
Hb-A1c (g/l)	65.2	2.5	61.4	4.4	0.429
Albumin (g/l)	38.5	0.5	38.3	0.9	0.886
Ca (mg/l)	83.8	0.7	85.8	0.9	0.077
Glucose (mg/l)	1160.9	72.5	1015.9	44.7	0.093
Blood urea N (mg/l)	157.6	12.7	151.2	9.5	0.689
AST (IU/l)	190.74***	23.40	57.40	21.78	<0.001
ALT (IU/l)	68.69	12.03	73.54	32.54	0.890
AST:ALT ratio	2.93***	0.22	1.17	0.08	<0.001
TAG (mg/l)	1659.6	377.3	1121.6	81.3	0.169
Total cholesterol (mg/l)	1702.5*	54.5	1505.9	64.7	0.022
HDL-cholesterol (mg/l)	413.9	11.7	391.6	22.6	0.385
LDL-cholesterol (mg/l)	963.3*	48.6	797.7	53.4	0.024
High sensitive C-reactive protein (mg/l)	24.6***	3.1	9.6	3.9	0.004
Adiponectin (mg/l)	5.9*	0.5	8.2	0.9	0.037
Leptin ( $\mu\text{g/l}$ )	14.7*	0.2	7.8	0.8	0.029
Insulin (mg/l)	1.1	0.2	1.0	0.1	0.681

AST, aspartic acid transaminase; ALT, alanine transaminase.

Mean value was significantly different from that of the control group: \*  $P < 0.05$ , \*\*\*  $P < 0.001$ .

**Table 3.** Association of fatty acid composition of erythrocytes with the risk of acute non-fatal myocardial infarction by multivariable regression analysis†  
(Odds ratios and 95% confidence intervals)

	Tertile of erythrocyte fatty acid concentration (%)			P trend‡
	1	2	3	
<b>14:0</b>				
No. of cases	19	20	11	
No. of controls	16	17	17	
Blood fatty acids cut-off	≤0.26	0.26 < to ≤0.37	> 0.37	
OR	1.00	0.65	0.55	0.342
95% CI		0.21, 2.03	0.17, 1.79	
<b>16:0</b>				
No. of cases	11	8	31	
No. of controls	16	17	17	
Blood fatty acids cut-off	≤21.60	21.60 < to ≤22.57	> 22.57	
OR	1.00	0.59	2.21	0.205
95% CI		0.16, 2.10	0.71, 6.88	
<b>16:1n-7</b>				
No. of cases	3	24	23	
No. of controls	16	17	17	
Blood fatty acids cut-off	≤0.29	0.29 < to ≤0.55	> 0.55	
OR	1.00	11.77**	9.00*	0.128
95% CI		2.22, 62.44	1.60, 50.50	
<b>18:0</b>				
No. of cases	21	19	10	
No. of controls	16	17	17	
Blood fatty acids cut-off	≤16.34	16.34 < to ≤18.05	> 18.05	
OR	1.00	0.85	0.43	0.158
95% CI		0.27, 2.67	0.13, 1.38	
<b>trans-18:1n-9</b>				
No. of cases	1	1	48	
No. of controls	17	16	17	
Blood fatty acids cut-off	≤0.22	0.22 < to ≤0.35	> 0.35	<0.001
OR	1.00	1.24	50.53**	
95% CI		0.06, 27.58	5.29, 482.66	
<b>18:1n-9</b>				
No. of cases	9	15	26	
No. of controls	16	17	17	
Blood fatty acids cut-off	≤12.90	12.90 < to ≤14.32	> 14.32	
OR	1.00	1.60	2.46	0.138
95% CI		0.43, 5.99	0.74, 8.14	
<b>trans-18:2n-6</b>				
No. of cases	7	26	17	
No. of controls	16	17	17	
Blood fatty acids cut-off	≤0.19	0.19 < to ≤0.29	> 0.29	
OR	1.00	4.82*	3.84	0.175
95% CI		1.33, 17.39	0.96, 15.37	
<b>18:2n-6</b>				
No. of cases	9	27	14	
No. of controls	16	17	17	
Blood fatty acids cut-off	≤9.08	9.08 < to ≤11.09	> 11.09	
OR	1.00	3.06	1.09	0.755
95% CI		0.89, 10.49	0.30, 3.96	
<b>18:3n-3</b>				
No. of cases	47	3	0	
No. of controls	16	17	17	
Blood fatty acids cut-off	≤0.91	0.91 < to ≤1.60	> 1.60	
OR	1.00	0.04***	0.00	< 0.001
95% CI		0.01, 0.22	0.00, 0.00	
<b>20:3n-6</b>				
No. of cases	20	11	19	
No. of controls	16	17	17	
Blood fatty acids cut-off	≤1.38	1.38 < to ≤1.59	> 1.59	
OR	1.00	0.43	1.20	0.829
95% CI		0.13, 1.45	0.40, 3.65	
<b>20:4n-6</b>				
No. of cases	11	8	31	
No. of controls	16	17	17	
Blood fatty acids cut-off	≤12.50	12.50 < to ≤13.87	> 13.87	
OR	1.00	0.55	2.98	< 0.001
95% CI		0.14, 2.11	0.95, 9.34	

Table 3. Continued

	Tertile of erythrocyte fatty acid concentration (%)			P trend‡
	1	2	3	
<b>20:5n-3</b>				
No. of cases	44	5	1	
No. of controls	16	17	17	
Blood fatty acids cut-off	≤2.49	2.49 < to ≤3.60	> 3.60	
OR	1.00	0.05***	0.02**	< 0.001
95% CI		0.01, 0.24	0.00, 0.19	
<b>22:4n-6</b>				
No. of cases	12	15	23	
No. of controls	16	17	17	
Blood fatty acids cut-off	≤1.84	1.84 < to ≤2.28	> 2.28	
OR	1.00	1.64	2.41	0.134
95% CI		0.49, 5.45	0.76, 7.63	
<b>22:5n-3</b>				
No. of cases	14	28	8	
No. of controls	16	17	17	
Blood fatty acids cut-off	≤2.54	2.54 < to ≤3.13	> 3.13	
OR	1.00	0.83	0.15*	0.023
95% CI		0.25, 2.78	0.03, 0.68	
<b>22:6n-3</b>				
No. of cases	24	16	10	
No. of controls	16	17	17	
Blood fatty acids cut-off	≤7.72	7.72 < to ≤9.00	> 9.00	
OR	1.00	0.67	0.34	0.077
95% CI		0.21, 2.11	0.10, 1.12	
<b>Omega-3 Index</b>				
No. of cases	35	12	3	
No. of controls	16	17	17	
Blood fatty acids cut-off	≤10.43	10.43 < to ≤12.98	> 12.98	
OR	1.00	0.42	0.08**	0.001
95% CI		0.14, 1.30	0.02, 0.38	
<b>Total trans-fatty acids</b>				
No. of cases	1	1	48	
No. of controls	17	16	16	
Blood fatty acids cut-off	≤0.06	0.06 < to ≤0.45	> 0.45	
OR	1.00	0.50	72.67***	< 0.001
95% CI		0.02, 12.16	6.68, 790.74	

Omega-3 Index, sum of EPA and DHA.

\*  $P < 0.05$ , \*\*  $P < 0.01$ , \*\*\*  $P < 0.001$  (logistic regression analysis).

† OR and 95% CI were analysed by logistic regression. OR in cases and controls were adjusted for age, sex, history of diabetes, family history of CHD, smoking status, hypertension status, and levels of glucose, total cholesterol and HDL-cholesterol.

‡ Estimates of  $P$  values for a linear trend were based on linear scores derived from the medians of tertiles of erythrocyte fatty acid composition among controls.

acid profile significantly and substantially improved acute non-fatal MI case discrimination compared with traditional CHD risk factors, suggesting that the erythrocyte fatty acid profile is more powerful than the Framingham risk score for identifying patients with acute non-fatal MI.

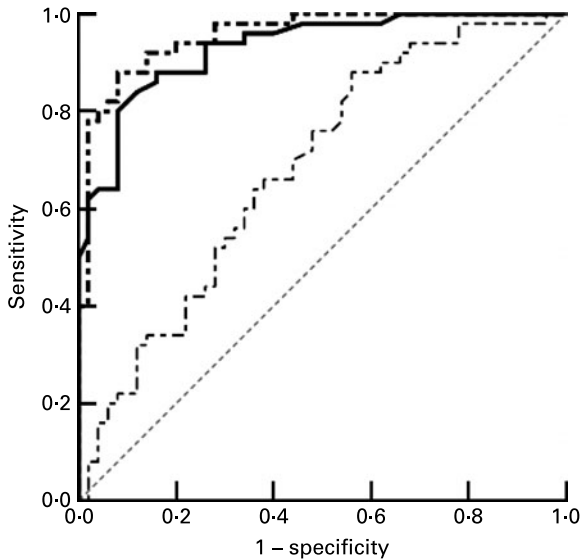
The traditional Framingham risk score predicts CHD with an accuracy of 70–80%<sup>(9,17)</sup>, but measurement of the tissue levels of fatty acids could serve as screening tool to assess MI risk and guide dietary interventions using an evidence-based approach.

Table 4. Correlation between fatty acid composition of erythrocytes and metabolic parameters determined by partial correlation analysis (Partial correlation coefficients adjusted for age and sex)

	hs-CRP (mg/l)	Leptin (μg/l)	Adiponectin (mg/l)	Glucose (mg/l)	TAG (mg/l)	LDL-cholesterol (mg/l)	HDL-cholesterol (mg/l)	Total cholesterol (mg/l)
<i>trans</i> -18:1n-9	0.453***	0.161	-0.222*	0.112	0.077	0.030	0.134	0.042
<i>trans</i> -18:2n-6	0.076	0.096	-0.061	0.009	0.278**	-0.193	-0.008	-0.006
18:2n-6	0.083	-0.079	0.038	-0.013	-0.273*	0.213*	0.245*	-0.035
18:3n-3	-0.275*	-0.206	0.129	-0.238*	-0.119	-0.164	-0.167	-0.163
20:5n-3	-0.270*	-0.116	0.125	-0.223*	-0.087	-0.125	-0.111	-0.219*
Omega-3 Index	-0.276*	-0.171	0.081	-0.214*	0.002	-0.066	-0.202	-0.142

hs-CRP, high-sensitivity C-reactive protein; Omega-3 Index, sum of EPA and DHA in erythrocytes.

\*  $P < 0.05$ , \*\*  $P < 0.01$ , \*\*\*  $P < 0.001$ .



**Fig. 1.** The ability of the fatty acid profile of erythrocytes to discrimination between myocardial infarction cases and controls was assessed in the validation set using receiver operating characteristic curves. The fatty acids risk score (— · —) included levels of EPA,  $\alpha$ -linolenic acid, *trans*-oleic acid and arachidonic acid; the traditional risk score (---) included Framingham risk factors such as age, sex, smoking status, total cholesterol, HDL-cholesterol, and a history of diabetes and hypertension; a combined risk score included traditional plus fatty acids risk score factors (—). (---), Reference line.

Previous CHD studies have found inverse associations between *n*-3 fatty acids<sup>(6,18–21)</sup> and *trans*-fatty acids<sup>(12,22–24)</sup>. Of the four fatty acids included in the model, increasing levels of two (EPA and ALA) were inversely associated with the OR for MI case status, while a direct association between the levels of *trans*-oleic acid and arachidonic acid levels and the OR for MI was found. Most studies have suggested that *n*-3 fatty acids, particularly DHA, are more cardioprotective than EPA<sup>(16)</sup>, and because tissue phospholipid DHA proportions are considerably higher than EPA (2.1 v. 0.8%), the former may give a stronger signal and have lower variability. However, EPA reduced major coronary events by 19% in patients with a history of coronary artery disease in the Japan EPA Lipid Intervention Study (JELIS) when the plasma level of EPA was about 2.6%<sup>(4)</sup>. EPA has many beneficial effects<sup>(14)</sup>, including hypolipidaemic and anti-platelet activities<sup>(25)</sup>, and plaque-stabilising properties<sup>(26)</sup>. In the present study, only EPA was associated with MI in Korean patients; the EPA levels of erythrocytes were 3.47% in controls and 1.68% in cases, similar to the values reported in a Japanese population and higher than those reported in an American study (0.46% in cases v. 0.72% in controls)<sup>(24)</sup>. Block *et al.*<sup>(24)</sup> also reported DHA levels of 2.93% in cases and 3.53% in controls, which were lower than the Korean controls of 8.35% and cases of 7.89% in the present study.

EPA competes with arachidonic acid, the precursor of PGE<sub>2</sub> and leucotriene B<sub>4</sub>, thereby producing pro-inflammatory and thrombotic effects<sup>(27)</sup>. Thus, a high intake of *n*-6 fatty acids is characterised by increases in blood viscosity, vasospasm and vasoconstriction, and *n*-3 fatty acids are associated with a decrease in blood viscosity and have anti-inflammatory, anti-thrombotic, anti-arrhythmic, hypolipidaemic and vasodilatory properties<sup>(16)</sup>. Arachidonic acid content in adipose

tissue is associated with increased risk of MI<sup>(24,28)</sup>, but a meta-analysis of case-control and prospective cohort studies found that increased arachidonic acid content in phospholipids or TAG was not significantly associated with CHD<sup>(13)</sup>. However, Block *et al.*<sup>(24)</sup> reported that there was a significant difference in arachidonic acid content between patients with acute coronary syndrome status and controls, and that arachidonic acid had a U-shaped relationship with the risk of acute coronary syndrome status. In the present study, the relationship of arachidonic acid to MI was also U-shaped; compared with the first quartile of arachidonic acid, the OR for case status in the second and third quartiles were 0.55 (95% CI 0.14, 2.11) and 2.98 (95% CI 0.95, 9.34), respectively. Fatty acids are measured as proportions; thus higher arachidonic and lower EPA levels may be associated with an increased risk of acute non-fatal MI.

*Trans*-fatty acids are associated with the risk of CHD<sup>(22)</sup>. Clifton *et al.*<sup>(12)</sup> and Pedersen *et al.*<sup>(28)</sup> found a positive association between MI and adipose tissue levels of *trans*-oleic acid. Block *et al.*<sup>(24)</sup> measured fatty acids in erythrocytes and reported that high levels of *trans*-oleic acid were associated with acute coronary syndrome, whereas levels of *trans*-linoleic acid did not show a significant association with acute coronary syndrome. In the present study, we consistently found that the *trans*-oleic acid content of erythrocytes was associated with an increased risk of acute non-fatal MI. Although margarine, beef and dairy consumption have been linked to CHD, it has been difficult to link *trans*-fatty acids in erythrocytes from these sources to MI. Although the usual case-control design is prone to bias, the use of fatty acid biomarkers may be more reliable than dietary measures, and MI does not alter the tissue fatty acid composition<sup>(29)</sup>. Furthermore, the acute interventions commonly used to treat MI patients upon admission are not expected to alter the fatty acid composition of erythrocytes; however, we could not evaluate this assumption in the present study because blood samples were drawn upon admission.

The hypotriacylglycerolaemic effect of *n*-3 fatty acids is well established, and has been ascribed to the reduced hepatic synthesis of VLDL and increased catabolism of VLDL<sup>(30)</sup>. A meta-analysis indicated that among all classes of fatty acids, *trans*-fatty acids have the strongest effect on raising serum LDL-cholesterol levels<sup>(31)</sup>. However, we did not find a significant association between erythrocyte fatty acids and lipoprotein levels with the exception of the level of EPA, which was negatively associated with the levels of total cholesterol and *trans*-linoleic acid and positively associated with the concentration of TAG. Small sample sizes, inadequate biomarkers and uncontrolled confounding factors may explain the discrepancies between these studies.

In conclusion, the fatty acid profile of erythrocytes can discriminate better between acute non-fatal MI cases and controls than the Framingham risk score. Increased levels of *n*-3 fatty acids and decreased levels of *trans*-fatty acids and *n*-6 fatty acids are associated with decreased odds of MI. These findings suggest that the fatty acid profile of erythrocytes may contain metabolomic information, and thus be of prognostic value in the diagnosis of non-fatal MI. Although prospective validation and a larger study are required, fatty acid profiles may have clinical utility for non-fatal MI risk assessment.

## Acknowledgements

The present study was supported by a Korean Research Foundation grant funded by the Korean Government (MOEHD, Basic Research Promotion Fund; KRF-2007-331-C00279).

Y. P. is the principal investigator for this project and wrote the manuscript; J. Lim conducted the laboratory and statistical analysis; J. Lee recruited MI patients and collected medical information, and advised on the clinical part of this paper; S. K. recruited control patients and collected medical information, and advised on the clinical part of this paper.

The authors state that there are no conflicts of interest.

## References

- Wang C, Harris WS, Chung M, *et al.* (2006) *n*-3 Fatty acids from fish or fish-oil supplements, but not  $\alpha$ -linolenic acid, benefit cardiovascular disease outcomes in primary- and secondary-prevention studies: a systematic review. *Am J Clin Nutr* **84**, 5–17.
- Burr ML, Fehily AM, Gilbert JF, *et al.* (1989) Effects of changes in fat, fish, and fibre intakes on death and myocardial reinfarction: diet and reinfarction trial (DART). *Lancet* **334**, 757–761.
- Marchioli R, Barzi F, Bomba E, *et al.* (2002) Early protection against sudden death by *n*-3 polyunsaturated fatty acids after myocardial infarction: time-course analysis of the results of the Gruppo Italiano per lo Studio della Sopravvivenza nell'Infarto Miocardico (GISSI)-Prevenzione. *Circulation* **105**, 1897–1903.
- Yokoyama M, Origasa H, Matsuzaki M, *et al.* (2007) Effects of eicosapentaenoic acid on major coronary events in hypercholesterolaemic patients (JELIS): a randomized open-label, blinded endpoint analysis. *Lancet* **369**, 1090–1098.
- Hu FB, Bronner L, Willett WC, *et al.* (2002) Fish and omega-3 fatty acid intake and risk of coronary heart disease in women. *JAMA* **287**, 1815–1821.
- Sun Q, Ma J, Campos H, *et al.* (2008) Blood concentrations of individual long-chain *n*-3 fatty acids and risk of non-fatal myocardial infarction. *Am J Clin Nutr* **88**, 216–223.
- Ascherio A, Rimm EB, Stampfer MJ, *et al.* (1995) Dietary intake of marine *n*-3 fatty acids, fish intake, and the risk of coronary disease among men. *N Engl J Med* **332**, 977–982.
- Morris MC, Manson JE, Rosner B, *et al.* (1995) Fish consumption and cardiovascular disease in the Physicians' Health Study: a prospective study. *Am J Epidemiol* **142**, 166–175.
- Chambless LE, Folsom AR, Sharrett AR, *et al.* (2003) Coronary heart disease risk prediction in the atherosclerosis risk in communities (ARIC) study. *J Clin Epidemiol* **56**, 880–890.
- Wilson PW, D'Agostino RB, Levy D, *et al.* (1998) Prediction of coronary heart disease using risk factor categories. *Circulation* **97**, 1837–1847.
- Harris WS & Von Schacky C (2004) The Omega-3 Index: a new risk factor for death from coronary heart disease? *Prev Med* **39**, 212–220.
- Clifton PM, Keogh JB & Noakes M (2004) *Trans* fatty acids in adipose tissue and the food supply are associated with myocardial infarction. *J Nutr* **134**, 874–879.
- Harris WS, Poston WC & Haddock CK (2007) Tissue *n*-3 and *n*-6 fatty acids and risk for coronary heart disease events. *Atherosclerosis* **193**, 1–10.
- Harris WS, Park Y & Isley WL (2003) Cardiovascular disease and long-chain omega-3 fatty acids. *Curr Opin Lipidol* **14**, 9–14.
- Mozaffarian D, Pischon T, Hankinson SE, *et al.* (2004) Dietary intake of *trans* fatty acids and systemic inflammation in women. *Am J Clin Nutr* **79**, 606–612.
- Mori TA & Woodman RJ (2006) The independent effects of eicosapentaenoic acid and docosahexaenoic acid on cardiovascular risk factors in humans. *Curr Opin Clin Nutr Metab Care* **9**, 95–104.
- Wilson PW, D'Agostino RB, Levy D, *et al.* (1998) Prediction of coronary heart disease using risk factor categories. *Circulation* **97**, 1837–1847.
- Dewailly E, Blanchet C, Gingras S, *et al.* (2001) Relations between *n*-3 fatty acid status and cardiovascular disease risk factors among Quebecers. *Am J Clin Nutr* **74**, 603–611.
- Block RC, Harris WS, Reid KJ, *et al.* (2008) EPA and DHA in blood cell membranes from acute coronary syndrome patients and controls. *Atherosclerosis* **197**, 821–828.
- Harris WS, Poston WC & Haddock CK (2007) Tissue *n*-3 and *n*-6 fatty acids and risk for coronary heart disease events. *Atherosclerosis* **193**, 1–10.
- Albert CM, Campos H, Stampfer MJ, *et al.* (2002) Blood levels of long-chain *n*-3 fatty acids and the risk of sudden death. *N Engl J Med* **346**, 1113–1118.
- Mozaffarian D, Katan MB, Ascherio A, *et al.* (2006) *Trans* fatty acids and cardiovascular disease. *N Engl J Med* **354**, 1601–1613.
- Sun Q, Ma Jing, Campos H, *et al.* (2007) A prospective study of *trans* fatty acids in erythrocytes and risk of coronary heart disease. *Circulation* **115**, 1858–1865.
- Block RC, Harris WS, Reid KJ, *et al.* (2008) Omega-6 and *trans* fatty acids in blood cell membranes: a risk factor for acute coronary syndromes? *Am Heart J* **156**, 1117–1123.
- Park Y & Harris WS (2002) EPA, but not DHA, decreases mean platelet volume in normal subjects. *Lipids* **37**, 941–946.
- Thies F, Garry JM, Yaqoob P, *et al.* (2003) Association of *n*-3 polyunsaturated fatty acids with stability of atherosclerotic plaques: a randomized controlled trial. *Lancet* **361**, 477–485.
- Wada M, DeLong CJ, Hong YH, *et al.* (2007) Enzymes and receptors of prostaglandin pathways with arachidonic acid-derived versus eicosapentaenoic acid-derived substrates and products. *J Biol Chem* **282**, 22254–22266.
- Pedersen JI, Ringstad J, Almendingen K, *et al.* (2000) Adipose tissue fatty acids and risk of myocardial infarction – a case-control study. *Eur J Clin Nutr* **54**, 618–625.
- Kark JD, Manor O, Goldman S, *et al.* (1995) Stability of red blood cell membrane fatty acid composition after acute myocardial infarction. *J Clin Epidemiol* **48**, 889–895.
- De Caterina R, Madonna R, Bertolotto A, *et al.* (2007) *n*-3 Fatty acids in the treatment of diabetic patients: biological rationale and clinical data. *Diabetes Care* **30**, 1012–1026.
- Mensink RP, Zock PL, Kester AD, *et al.* (2003) Effects of dietary fatty acids and carbohydrates on the ratio of serum total to HDL cholesterol and on serum lipids and apolipoproteins: a meta-analysis of 60 controlled trials. *Am J Clin Nutr* **77**, 1146–1155.