

Measurements of the unsteady flow field around beating cilia

Da Wei¹, Parviz G. Dehnavi², Marie-Eve Aubin-Tam¹ and Daniel Tam^{2,†}

¹Department of Bionanoscience, Kavli Institute of Nanoscience, Delft University of Technology, 2628HZ Delft, The Netherlands

²Laboratory for Aero and Hydrodynamics, Delft University of Technology, 2628CJ Delft, The Netherlands

(Received 21 July 2020; revised 21 January 2021; accepted 12 February 2021)

The swift deformations of flagella and cilia are crucial for locomotion and fluid transport on the micron scale. Most hydrodynamic models of flagellar and ciliary flows assume the zero Reynolds number limit and model the flow using Stokes equations. Recent work has demonstrated that this quasi-steady approximation breaks down at increasing distances from the cilia. Here, we use optical tweezer-based velocimetry to measure the flow velocity with high temporal accuracy, and to reconstruct the entire unsteady flow field around beating cilia. We report both the steady and the unsteady component of the ciliary flow and compare them with the solutions to both the Stokes and the Navier–Stokes equations. Our experimental measurements of the velocity and vorticity fields are in agreement with the numerical solution to the Navier–Stokes equations and show significant differences with the solution to the Stokes equations. We characterize the phase difference between the flow oscillations and the oscillations of the ciliary motion and evidence a significant anisotropic phase lag. We show that this phase lag presents the spatiotemporal characteristics of the unsteady Stokes equations and that the flow field around beating cilia is well represented by the fundamental solution to the unsteady Stokes equations: the oscillet.

Key words: micro-organism dynamics, Navier–Stokes equations

1. Introduction

Cilia and flagella are ubiquitous hair-like structures that are highly-conserved among eukaryotic organisms. These organelles are functionally diverse, and their proper functioning is critical for the survival of many living organisms, from small scale micro-organisms (Ginger, Portman & McKean 2008; Raina *et al.* 2019) to humans (Fliegeauf, Benzing &

† Email address for correspondence: d.s.w.tam@tudelft.nl

Omran 2007; Satir & Christensen 2007). Flagellar and ciliary functions include: microbial motility (Lauga & Powers 2009; Elgeti, Winkler & Gompper 2015), cleansing (Tilley *et al.* 2015), reproduction (Halbert *et al.* 1997) and sensing (Fliegeauf *et al.* 2007). A fine control of flagellar and ciliary motility supports the precise navigation of spermatozoa following chemical gradients during fertilization (Friedrich & Jülicher 2007; Yoshida & Yoshida 2011), the taxis of micro-algae towards desirable environments (Wan & Goldstein 2018; Wan 2020), feeding of *Paramecium* (Funfak *et al.* 2014) and the transport of mucus to clear airways (Tilley *et al.* 2015). Most of these functions depend on the generation of flows on the micron scale. This has led to extensive work to develop theoretical models and design experiments to characterize the flow around cilia.

The flows generated by cilia and flagella have been modelled for studies of a single beating cilium or flagellum of microswimmers, for studies of hydrodynamic interactions between multiple flagella/cilia and for studies of multiple microswimmers in a suspension (Elgeti *et al.* 2015). Previous work on a single beating flagellum or on an isolated microswimmer have included studies of single free-swimming bacteria (Drescher *et al.* 2011), of single sperm cells swimming away (Ishimoto *et al.* 2018) and close to surfaces (Smith *et al.* 2009; Elgeti, Kaupp & Gompper 2010) and of micro-algae swimming freely (Drescher *et al.* 2010; Guasto, Johnson & Gollub 2010) and captured by pipette suction (Brumley *et al.* 2014; Quaranta, Aubin-Tam & Tam 2015; Amador *et al.* 2020). In these studies, flow fields are often described with reduced hydrodynamic models such as single or multiple stokeslet singularities (Pepper *et al.* 2013; Drescher *et al.* 2010; Lushi, Kantsler & Goldstein 2017; Ishimoto *et al.* 2018), force dipoles (Drescher *et al.* 2011) or multipole expansions (Mathijssen, Pushkin & Yeomans 2015). Studies of hydrodynamic interactions between two or more beating flagella/cilia have often focused on synchronization. Such studies require simple and accurate models to represent the flow fields around cilia. Beating cilia have been represented as rotating spheres (or stokeslets) with prescribed trajectories (Vilfan & Jülicher 2006; Guirao & Joanny 2007; Niedermayer, Eckhardt & Lenz 2008; Uchida & Golestanian 2010; Friedrich & Jülicher 2012; Theers & Winkler 2013; Brumley *et al.* 2014). A more detailed representation describes a cilium as undulating filaments with prescribed waveforms discretized into stokelets or spheres (Geyer *et al.* 2013; Ding *et al.* 2014; Guo *et al.* 2018). Studies of internal dynamics and kinematics of flagella/cilia (Tam & Hosoi 2007, 2011; Chakrabarti & Saintillan 2019a,b) have made use of non local slender-body theory to model the hydrodynamics (Keller & Rubinow 1976). Finally, studies of suspensions of microswimmers have focused on the onset of collective motion and the effect on the rheology of the active suspension (Saintillan 2018). These efforts also require efficient hydrodynamic models for active particles (Ishikawa, Simmonds & Pedley 2006; Pooley, Alexander & Yeomans 2007; Saintillan & Shelley 2007; Lauga & Michelin 2016).

In most of the aforementioned studies, Stokes equations are used to represent the dynamics of the fluid (Purcell 1977). Stokes equations imply a quasi-steady approximation, which assumes that the vorticity, created by the no-slip condition at the surface of a deformable microswimmer, propagates to infinity instantaneously. Thus, Stokes equations neglect the unsteady effects associated with the small, but finite, time scale for vorticity diffusion. These unsteady effects have long been suggested to be used by microswimmers for locomotion (Brennen 1974; Wang & Ardekani 2012; Ishimoto 2013), sensing (Takagi & Strickler 2020) and interacting with each other in a way that is different from what predicted by the Stokes equations (Li, Ostace & Ardekani 2016). Additionally, the unsteadiness alone is also suggested to be sufficient to establish hydrodynamic synchronization in minimal models (Theers & Winkler 2013).

Flow velocity fields around beating cilia have been measured experimentally (Drescher *et al.* 2010; Guasto *et al.* 2010; Brumley *et al.* 2014). However, characterizing the significance of the unsteady component of ciliary flow is challenging. One major reason is that the ciliary beating frequency is high ($\sim 10\text{--}100$ Hz) and hence the time scale for the unsteadiness is short. Established velocimetry techniques based on measuring the displacements of passive tracer particles are inaccurate over short time scales, because of the thermal diffusivity of the tracer particles. Recently, Wei *et al.* (2019) directly measured the unsteady flow around beating cilia and measured the asymptotic decay in the velocity field along two principal directions. These measurements were performed using optical tweezers velocimetry (OTV) (Dehnavi *et al.* 2020). The asymptotic behaviour of the flow was shown to deviate fundamentally from the Stokeslet and to have characteristic features of the fundamental solution to the unsteady Stokes equations – referred to as the oscillet by Klindt & Friedrich (2015) – namely a higher spatial decay rate and, more importantly, a spatial phase shifted, at distances smaller than the characteristic length of vorticity diffusion $\delta = \sqrt{\mu/\rho f}$, where μ is the dynamic viscosity of water, ρ the density and f the ciliary beating frequency. Separate recent experimental work has led to similar observations (Bruot *et al.* 2020).

In this study, we use OTV to fully characterize the time resolved flow velocity fields around beating cilia. Our measurements illustrate the rich spatiotemporal dynamics of the flow around cilia. We report the asymptotic behaviour of both the steady and the unsteady flow components along the different principal directions. The spatial and time resolution allow us to compare our velocity measurements in the entire flow field with the fundamental solution of the unsteady Stokes equations. We further perform numerical simulations and compare our experimental velocimetry measurements with the computed velocity fields. We solve both Stokes equations using the boundary element method (BEM) and the unsteady Stokes equations using direct numerical simulations. This comparison shows that the measured flow fields display key features which are direct results of the unsteady term in the equation and are not accounted for in the Stokes equations.

This paper is organized as follows. Section 2 introduces the theoretical framework, with § 2.1 introducing the governing equations, and § 2.2 the numerical results showing the behaviour of an oscillet. Section 3 introduces the experimental and computational methodology. Section 4 focuses on characterizing the asymptotic behaviours of the ciliary flow field along different axes. Sections 4.1–4.3 present results of the spatial decay of the steady flow, the spatial decay of the unsteady flow, and the phase shift of the unsteady flow, respectively. Lastly, in § 5, we present the time-resolved ciliary flow field over the entire xy -plane. In § 5.1, we display the flow field consisting of both the steady and the unsteady components. Then we focus on characterizing the unsteady velocity field over the plane in §§ 5.2–5.4, where we introduce the direct numerical simulation method, map the phase shift over the plane, and visualize the vorticity diffusion, respectively.

2. Theoretical background

2.1. Governing equations

The fluid dynamics of an incompressible fluid around beating cilia is governed by the Navier–Stokes equations:

$$\left. \begin{aligned} \rho \left(\frac{\partial \mathbf{u}}{\partial t} + (\mathbf{u} \cdot \nabla) \mathbf{u} \right) &= -\nabla p + \mu \nabla^2 \mathbf{u} + \mathbf{f}, \\ \nabla \cdot \mathbf{u} &= 0, \end{aligned} \right\} \quad (2.1)$$

where ρ and μ are the density and the dynamic viscosity of the fluid, $\mathbf{u}(\mathbf{r}, t) = (u, v, w)$ and $p(\mathbf{r}, t)$ the velocity and the pressure fields, and $\mathbf{f}(\mathbf{r}, t)$ represents the distribution of body force. We consider a flow with a characteristic time scale of $\tau = 1/f$, characteristic velocity U and length scale L . With these scales, we non-dimensionalize equations (2.1):

$$\left. \begin{aligned} Re_\tau \frac{\partial \tilde{\mathbf{u}}}{\partial \tilde{t}} + Re(\tilde{\mathbf{u}} \cdot \nabla) \tilde{\mathbf{u}} &= -\nabla \tilde{p} + \nabla^2 \tilde{\mathbf{u}} + \tilde{\mathbf{f}}, \\ \nabla \cdot \tilde{\mathbf{u}} &= 0. \end{aligned} \right\} \quad (2.2)$$

Equations (2.2) depend on two non-dimensional parameters, namely the classical Reynolds number $Re = \rho UL/\mu$ and the unsteady Reynolds number $Re_\tau = \rho L^2/(\mu\tau)$. The Reynolds number Re describes the relative magnitude between the nonlinear inertial term and the viscous term in (2.1). The unsteady Reynolds number Re_τ characterizes the relative magnitude of the transient inertial term and the viscous term. In studies of micro-motility and flagellar hydrodynamics, both the transient and the nonlinear inertial terms are often neglected, such that (2.1) simplify to the Stokes equations, which are used to compute the flow field:

$$\mathbf{0} = -\nabla p + \mu \nabla^2 \mathbf{u} + \mathbf{f}. \quad (2.3)$$

For ciliary flows, the Reynolds number Re is very small. For example, for a micro-algae 10 μm long swimming at 100 $\mu\text{m s}^{-1}$ the Reynolds number is $Re \sim 10^{-3}$ and the nonlinear inertial term is negligible. Next, we consider the unsteady Reynolds number. Re_τ can be interpreted as the ratio of two time scales, $Re_\tau = \tau_{diff}/\tau$, where $\tau_{diff} = \rho L^2/\mu$ is the time scale for the diffusion of vorticity over a length scale L and τ is the relevant characteristic time scale. Considering the flow field at very short distances L from the beating flagella/cilia, τ_{diff} is small such that $\tau_{diff} \ll \tau$. In this case, the viscous boundary layer can be considered to have diffused over a length scale much larger than L and it is therefore justified to assume a quasi-steady approximation within this boundary layer and to represent the flow field with the Stokes equations (2.3). On the other hand, if we consider the flow field at distances L such that $\tau_{diff} \geq \tau$, the quasi-steady approximation does not hold and the flow should be represented with the unsteady Stokes equations, which retains the transient term:

$$\rho \frac{\partial \mathbf{u}}{\partial t} = -\nabla p + \mu \nabla^2 \mathbf{u} + \mathbf{f}. \quad (2.4)$$

In this study, we characterize experimentally the unsteady flow around beating cilia. For this, it is instructive to decompose the flow velocity into a steady and an unsteady component: $\mathbf{u} = \bar{\mathbf{u}} + \mathbf{u}'$. The steady component $\bar{\mathbf{u}}$ of the velocity field corresponds to the time-average of the ciliary flow, $\bar{\mathbf{u}} = \int_0^T \mathbf{u}(\mathbf{r}, t) dt/T$, with T the period of beating. By definition, this term is time-independent, and therefore it is expected to satisfy the Stokes equations (2.3). The unsteady component $\mathbf{u}' = \mathbf{u} - \bar{\mathbf{u}}$ corresponds to the oscillatory component of the ciliary flow whose time average is zero and satisfies the unsteady Stokes equations (2.4). Solutions to the unsteady Stokes equations (2.4) and to the Stokes equations (2.3) are fundamentally different, and one therefore expects the steady and the unsteady flow components to present different characteristics. We illustrate these key differences by looking at the fundamental solutions to both these equations.

2.2. Fundamental solutions: the stokeslet and the oscillet

Both the Stokes and the unsteady Stokes equations are linear partial differential equations, for which general solutions can be constructed by the linear superposition of fundamental solutions. One of such fundamental solutions to the Stokes equations is the stokeslet, which corresponds to the Stokes flow created by a point force $\mathbf{f} = \mathbf{F}\delta(\mathbf{r})$. Here $\delta(\mathbf{r})$ is the Kronecker delta function. The flow field of a stokeslet is (Pozrikidis 2011)

$$\left. \begin{aligned} \mathbf{u}_S(\mathbf{r}) &= \mathbf{F} \cdot \frac{\mathbf{G}(\mathbf{r})}{8\pi\mu}, \\ \mathbf{G}_{ij}(\mathbf{r}) &= \frac{\delta_{ij}}{r} + \frac{x_i x_j}{r^3}. \end{aligned} \right\} \quad (2.5)$$

Similarly, the fundamental solution to the unsteady Stokes equations with an oscillating point force $\mathbf{f} = \mathbf{F}\delta(\mathbf{r})e^{i\cdot 2\pi ft}$ derived by Stokes (1851) can be written (Pozrikidis 2011; Kim & Karrila 2013):

$$\left. \begin{aligned} \mathbf{u}_O(\mathbf{r}) &= \mathbf{F} e^{i\cdot 2\pi ft} \cdot \frac{\mathbf{S}(\mathbf{r})}{8\pi\mu}, \\ \mathbf{S}_{ij}(\mathbf{r}) &= \frac{\delta_{ij}}{r} \mathcal{A}(R) + \frac{x_i x_j}{r^3} \mathcal{C}(R), \\ \mathcal{A}(R) &= 2 \left(1 + \frac{1}{R} + \frac{1}{R^2} \right) e^{-R} - \frac{2}{R^2}, \\ \mathcal{C}(R) &= -2 \left(1 + \frac{3}{R} + \frac{3}{R^2} \right) e^{-R} + \frac{6}{R^2}, \\ R &\equiv \sqrt{2\pi} \cdot \frac{r}{\delta} e^{-i\cdot \pi/4}, \quad \delta \equiv \sqrt{\frac{\mu}{\rho f}}. \end{aligned} \right\} \quad (2.6)$$

Following Klindt & Friedrich (2015), we refer to this fundamental solution as an oscillet. In the near field, where $R \rightarrow 0$, one can easily verify that $\mathcal{A}(R \rightarrow 0) = 1$ and $\mathcal{C}(R \rightarrow 0) = 1$, such that $\mathbf{S}(\mathbf{r}) \approx \mathbf{G}(\mathbf{r})$. Therefore, in the vicinity of the point force, the oscillet is simply an oscillating stokeslet. In the far field, there are two major differences between the behaviour of an oscillating stokeslet (2.5) and that of an oscillet (2.6). First, in the far field, the magnitude of the stokeslet flow \mathbf{u}_S decays as $1/r$, while the amplitude of the flow oscillations of the oscillet decays as $1/r^3$. Second, the flow field around an oscillating stokeslet always oscillates in phase with the point force at the origin of the flow. This is because of the quasi-steady approximation of (2.3), which assumes that the flow has instantaneously reached the steady state stokeslet field. For an oscillet, on the other hand, the oscillations of the flow velocity will be phase delayed with respect to the oscillations of the forcing. This phase delay is a direct consequence of the finite diffusion time of vorticity, and the oscillet is analogous to Stokes' second problem, corresponding to the unsteady flow created by an oscillating flat surface (Pozrikidis 2011).

We illustrate the important differences between the stokeslet and the oscillet by representing the velocity fields associated with both singularities. Figure 1 illustrates the velocity field and streamline pattern for a point force located at the origin and oscillating along the x -axis. Figure 1(a) corresponds to an oscillating stokeslet, while figure 1(b) corresponds to an oscillet. For the stokeslet, it is noteworthy that the x -component of the velocity field \mathbf{u} has the same sign in the entire domain and remains always the same as the sign of the point force \mathbf{F} . The oscillet flow, figure 1(b), resembles the stokeslet flow only in the immediate vicinity of the origin, where the point force is located. The flow field is

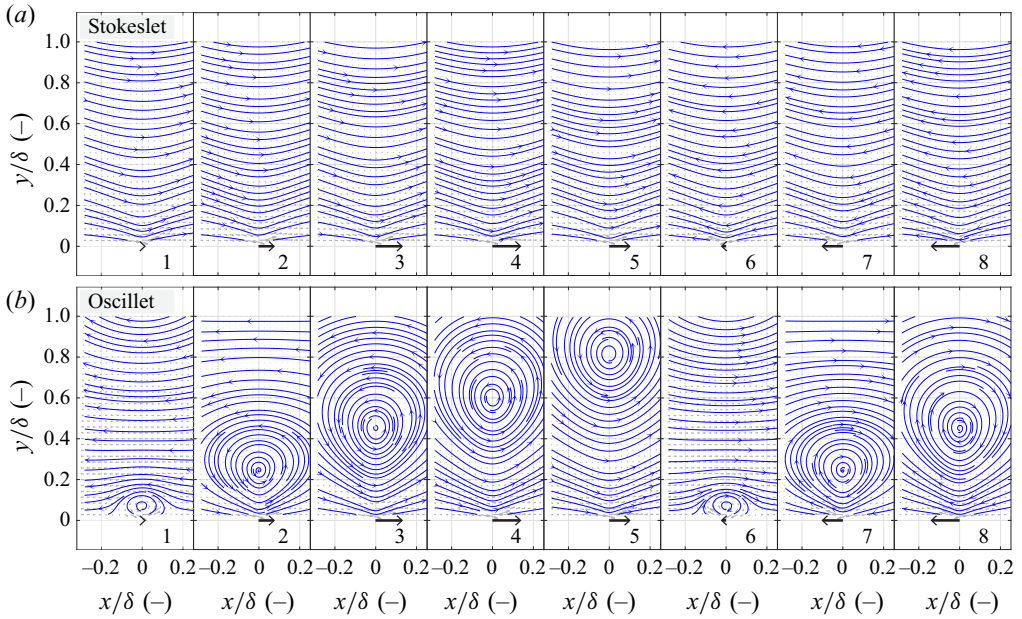


Figure 1. Streamlines deduced from the velocity field of a stokeslet with oscillating force (a) and that of an oscillet (b). The oscillating force $F \sin(2\pi t/T)$ is represented by the black arrow at the origin. From panel 1 to 8, $t/T = 0.03, 0.10, 0.20, 0.28, 0.39, 0.52, 0.60, 0.70$. Grey arrows represent the velocity vector field.

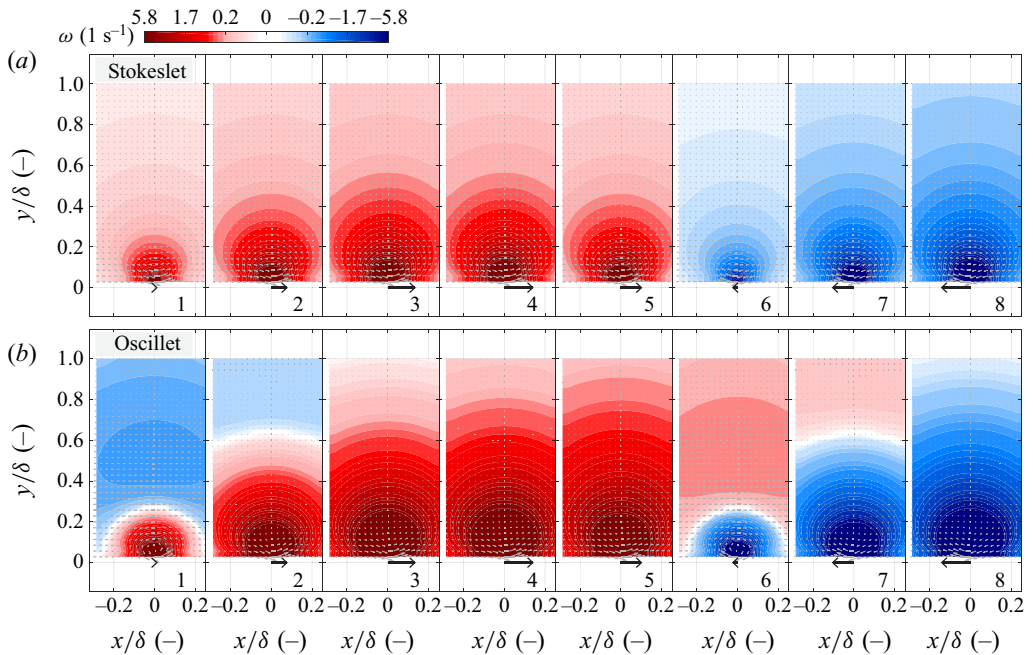


Figure 2. Vorticity field, $\omega = \nabla \times \mathbf{u}$, of a stokeslet with oscillating force (a) and that of an oscillet (b). Panels are taken at the same instants as in [figure 1](#) respectively.

Measurements of the unsteady flow field around beating cilia

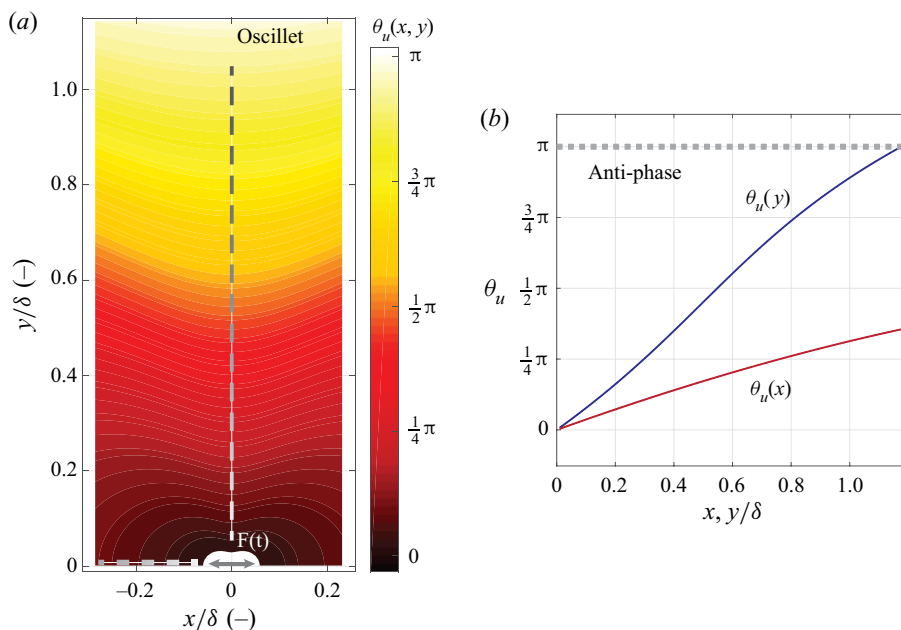


Figure 3. Phase shift θ_u between the forcing and the x -component of the velocity, computed with (2.6). The point force is at the origin and oscillates along the x -axis. (a) Phase shift in xy -plane. (b) Phase shift θ_u along the x - (red) and the y -axis (blue), corresponding to the horizontal and the vertical dashed line in (a) respectively. Axes are scaled by $\delta = \sqrt{\mu\tau/\rho}$.

characterized by the presence of a stagnation point and that of closed streamlines around the stagnation point. The flow direction is therefore not uniform in the entire field. Along the y -axis, the sign of the velocity component u changes beyond the stagnation point, which corresponds to a flow inversion point. This stagnation point moves away from the origin, figure 1(b, panels 1 to 5). A new stagnation point is generated at the origin, every time the point force changes direction, figure 1(b, panel 6). This new stagnation point, then, moves away from the origin, figure 1(b, panel 6–8). The propagation of the stagnation point is related to the diffusion of vorticity, which we consider next.

Figure 2 represents the z -component of the vorticity field in the xy -plane at different instants during a cycle. For a stokeslet, the vorticity field has a uniform sign in the entire field and is positive (respectively negative) for a positive (respectively negative) point force F , figure 2(a). The vorticity field of the oscillet does not have a uniform sign. Vorticity is generated at the origin, figure 2(a, panel 1), and diffuses into the field, see panels 1–5. When the force direction reverses and becomes negative, negative vorticity is then generated at the point force, figure 2(a, panel 6), but the vorticity remains positive in the rest of the field.

Finally, in the oscillet flow, there is phase delay between the oscillation of the flow velocity and the oscillation of the point force. This is not the case for the stokeslet flow. Figure 3 represents θ_u , the phase delay between u and the point force. A distinct feature is that the phase increase is not isotropic. The phase increases slowly along the direction of the forcing, the x -axis, and significantly faster along directions perpendicular to the forcing, the y - and z -axis, see figure 3(b). It bears emphasis that the increase in phase delay occurs already at short distances from the point force, and is not limited to the

far field. In fact, the phase increases the fastest at distances smaller than the diffusive length scale δ .

3. Methodology

3.1. Optical tweezers velocimetry (OTV)

We measure the flow field around beating biological cilia. In nature, cilia beat at frequencies ranging from 10 to 100 Hz and generate flows with rich temporal dynamics. Resolving such dynamics requires high temporal and spatial accuracy. On these scales, velocimetry techniques based on passive tracers, such as particle image velocimetry (PIV) and particle tracking velocimetry (PTV) become inappropriate because the advection of passive tracers cannot be distinguished from Brownian motion (Meinhart, Wereley & Santiago 1999). While the displacements due to the advection of the particle by the flow scale with $\sim U\tau$, the displacements due to diffusion scale with $\sim\sqrt{D\tau}$, where D is the diffusion coefficient of the tracer particle. The ratio of these length scales defines the Péclet number $Pe \sim U\sqrt{\tau/D}$, which represents a signal to noise ratio for passive tracer-based velocimetry. For smaller values of Pe , both PIV and PTV can still be used to measure the average flow, but they cannot accurately capture the unsteady nature of the flows. These physical limitations of micro-PIV can be reduced to a certain extent by using larger tracers, or in case of preknowledge of the periodic character of a flow, by using correlation averaging within a class of image pairs grouped to correspond to a given phase of the periodic flow, see Poelma *et al.* (2008). For unsteady ciliary flows, Pe can be of order one and even much smaller at increased distances from the cilia. For such flows, the use of PIV and PTV is extremely difficult. Here, we tackle this challenge by using OTV (Wei *et al.* 2019; Dehnavi *et al.* 2020). Previously, optical tweezers have been employed to measure velocity of steady flows (Almendarez-Rangel *et al.* 2018). In this study, we leverage the high spatial-temporal resolution of the optical tweezers-based measurement to resolve both the steady and the unsteady component of the ciliary flow. In this technique, a bead is trapped by a focused laser beam. The local flow velocity directly relates to the displacement of the bead from the laser focal point. The desired temporal resolution in measuring the flow ($\lesssim 0.1$ ms) is achieved by using back focal plane interferometry (Gittes & Schmidt 1998; Farré, Marsà & Montes-Usategui 2012) in monitoring the bead position $\Delta\mathbf{x}(t)$.

The OTV experimental setup is presented in figure 4(a,b) and is briefly summarized hereafter. Two laser beams are aligned and focused by a water immersion objective (NA = 1.20, 60 \times). A Nd:YAG ($\lambda = 1064$ nm) laser is used to trap spherical polystyrene beads of radii $a = 0.5$ – 2.5 μm at the focal point. Following Dehnavi *et al.* (2020), we use larger beads in a weaker trap to measure the small amplitude flows far away from the cell, and smaller beads with stronger traps to measure, with a higher spatial resolution, the flows closer to the flagella. As the beads vary in size, even within the same sample, we measure the size of each bead for each flow measurement. Back focal plane interferometry is performed with a second detection laser ($\lambda = 880$ nm), which is used to detect the position of the bead with a position sensitive detector (PSD, First Sensor DL100-7) (figure 4a). The experimentally acquired electrical signal from the PSD is converted into bead position following the same methodology as Lang *et al.* (2002). The bead position $\Delta\mathbf{x}$ can be directly related to the local flow velocity \mathbf{u} , by considering the force balance between the force due to the optical tweezers $\mathbf{F}_t = -k\Delta\mathbf{x}$, and the hydrodynamic force $\mathbf{F}_h(t)$ due to the external flow \mathbf{u} , where k is the stiffness of the optical tweezers. The Reynolds number of the bead, $Re_a = \rho|\mathbf{u}|a/\mu$, is small $Re_a \approx 10^{-5}$ – 10^{-4} , such that the hydrodynamic force

Measurements of the unsteady flow field around beating cilia

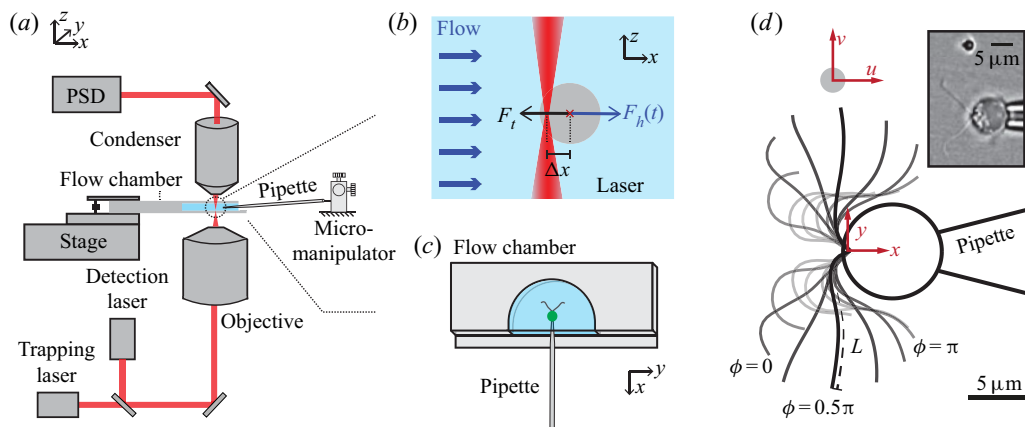


Figure 4. Optical tweezers velocimetry (OTV) (a) Scheme of OTV. Lasers are used for trapping beads and detecting the beads' displacement. Information on the bead's displacement is obtained by back focal plane interferometry, which is facilitated by a condenser and a position sensitive detector (PSD). (b) Zoom-in of the dashed circle in (a). The recovery force F_t exerted by the optical tweezers equals the hydrodynamic force $F_h(t)$. (c) Schematics showing how the biological sample is loaded. A customized flow chamber in a semi-circle shape of 15 mm diameter with a 2 mm thickness is used for experiments. Cells with beating cilia are captured by suction force applied through a glass micro-pipette. The cell and the pipette are mounted on a micro-manipulator which controls their relative position with respect to the laser trap. (d) Experimental configuration. A bead is optically trapped nearby to resolve the local flow velocities u and v . The ciliary shapes during a typical beat are displayed. The ciliary phase $\phi \in [0, 2\pi)$ is used to describe the shapes, with the most forward-reaching shape defined as $\phi = 0$. Inset shows a light microscope image of the corresponding experiment, in which the ciliary shapes correspond to approximately $\phi = 0$.

on the bead reduces to the viscous drag only, and the flow velocity can hence be deduced from the equation

$$\frac{d\Delta\mathbf{x}}{dt} + \frac{k}{\gamma}\Delta\mathbf{x} = \mathbf{u}(t), \quad (3.1)$$

where $\gamma = 6\pi\mu a$ is the Stokes drag coefficient. Using (3.1), we deduce the local flow velocity $\mathbf{u}(t)$ from the bead displacements $\Delta\mathbf{x}(t)$ using a Kalman filter, see Dehnavi *et al.* (2020) for detail.

3.2. Experimental setup and measurement settings

Wildtype *Chlamydomonas reinhardtii* cells (cc-125 mt+) cultured in TRIS-minimal medium (pH = 7.0) are used as biological samples to generate ciliary flows. In the OTV experiments, cell suspensions ($\sim 2 \times 10^4$ cells ml^{-1}) with uncoated polystyrene beads ($\sim 1 \times 10^5$ ml^{-1}) are filled into the custom-made flow chambers, see figure 4(c). The flow chamber is a semi-circle of 7.5 mm radius in the xy -plane and is 2.0 mm in height in z . Single cells are captured by suction force applied through custom-made micro-pipettes, figure 4(c,d). The openings of the pipettes are of 2–5 μm diameter. As shown in figure 4(a), the pipette is held by a micro-manipulator (SYS-HS6, WPI) and can be moved in x , y , and z directions with ~ 1 μm precision. With this, the cells are placed at different measurement locations with respect to the trapped bead. Unless otherwise mentioned, the ciliary beating plane is always aligned with the xy -plane. To record the ciliary beating of the captured cell, we use bright-field microscopy and high speed videography using an sCMOS camera

(LaVision PCO.edge) at frame rates of 400–1400 fps. At each location, OTV measurement was carried out at a sampling frequency of 10 kHz and lasted 5–10 s.

A typical experimental configuration is displayed in [figure 4\(d\)](#), with a light microscope image from our experiments in the inset at the top right. The captured cells are held at 120 μm above the bottom of the flow chamber. To prevent background flows due to evaporation during experiments, we seal the flow chamber with a layer of silicone oil. We record the flow velocity $\mathbf{u}(\mathbf{r}, t)$ sequentially at a series of locations with respect to the cell \mathbf{r}_i ($i = 1, 2, 3, \dots$). The point where the cilia are anchored to the cell body is taken as the origin of the Cartesian coordinate system. The asymptotic behaviour of the flow along different axes, and the flow field over the xy -plane, are studied with different sets of sampled flow velocity $\mathbf{u}(\mathbf{r}_i, t)$ ($i = 1, 2, 3, \dots$).

In addition to the OTV measurement, we simultaneously track the shapes of the beating cilia from the video recordings, [figure 4\(d\)](#). We define the ciliary phase $\phi \in [0, 2\pi)$ to describe the shapes, with the most forward-reaching shape defined as $\phi = 0$ (inset of [figure 4d](#)). For each frame, we determine the phase associated with the ciliary shape. To do this, we first time stamp the beginnings of each ciliary beat by identifying the most forward-reaching ciliary shapes ($\phi = 0$) for consecutive beats, based on the video taken simultaneously with the measurement. Second, the ciliary phase between two marked instants is linearly interpolated between 0 and 2π . [Figure 5\(d\)](#) displays the ciliary shapes that are marked by the user as $\phi = 0$, and are considered as $\phi = 0.5\pi$ and π by interpolation, from left to right, respectively. The point clouds represent the corresponding shapes from different cycles, and the solid lines represent the median shapes. The narrow spans of the point clouds confirm the accuracy of the time-stamping.

3.3. Boundary element method (BEM) and slender-body theory

To compute the flow velocity predicted by the Stokes equations (2.3), a hybrid method combining the BEM and slender-body theory (SBT) (Keller & Rubinow 1976) is employed. For simplicity, in the following parts, we refer to this method as the BEM, and it will be later further integrated with direct numerical simulation (DNS) to compute the flow field (§ 5.2).

In this BEM approach, the cell body and the pipette are represented as one entity, with a completed double layer boundary integral equation (Power & Miranda 1987). Stresslet singularities are distributed on the surface of the cell-pipette, while the stokeslet and rotlet singularities of the completion flow are distributed along the centerline of the cell-pipette (Keaveny & Shelley 2011). The no-slip boundary condition on the cell-pipette surface is satisfied at the collocation points. The cilia are represented using slender-body theory (Keller & Rubinow 1976) with 26 discrete points along each of the cilium's centerline. The time-dependent motion of each of the 26 discrete points on a beating cilium are tracked from video, following a procedure similar to Riedel-Kruse *et al.* (2007) and Geyer *et al.* (2013).

For each computation, we adjust the size of the pipette opening and the cell body shape according to the corresponding experiment. Realistic ciliary shapes are tracked from the video frames ([figure 4d](#)) and represented using SBT. The flow field corresponding to each frame is then computed. [Figure 5\(a\)](#) shows the computed flow field in the middle of the power stroke. Computed velocity $\mathbf{u}_S(t)$ at the bead's position (the white circle) is displayed in [figure 5\(b,c\)](#). The computed signals (red) are overlaid with the OTV results (grey and blue), showing the great accuracy of the numerical method. Flow velocities are scaled by $U_0 = Lf$, with L and f the ciliary length and frequency.

Measurements of the unsteady flow field around beating cilia

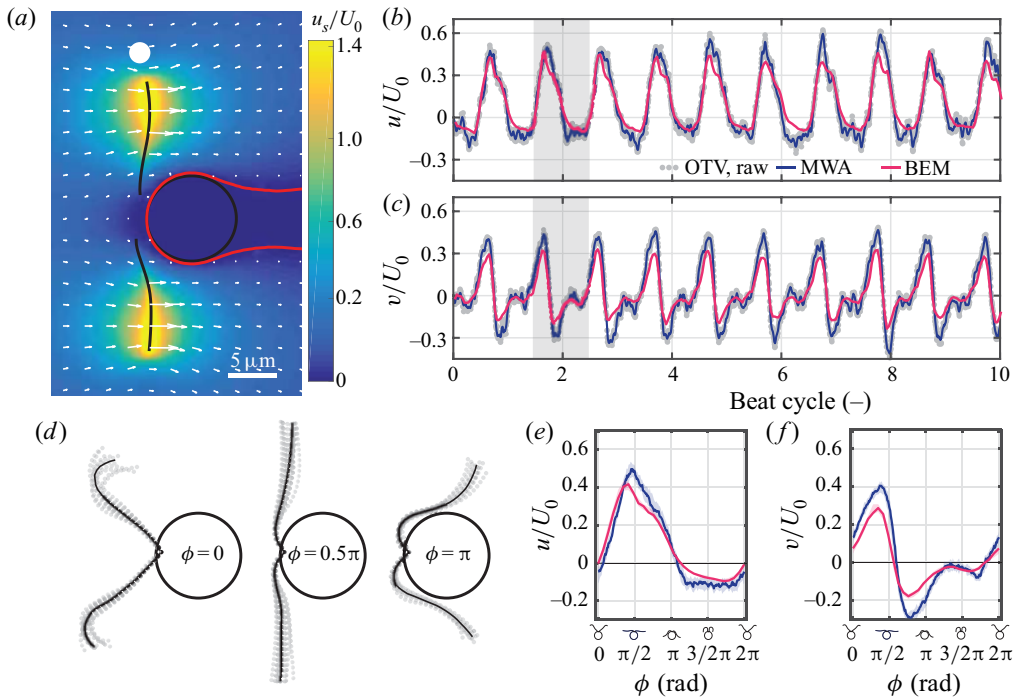


Figure 5. Numerical method and signal post treatment. (a) Flow field is computed numerically with the BEM using tracked ciliary shapes shown in figure 4(d). (b,c) The axial (x) and the lateral (y) velocity component, u and v , measured by OTV and computed by BEM. Raw OTV data are presented as grey dots in the background, while blue lines show the signal after moving window average (MWA). BEM computations are overlaid in red. A typical beat is shaded, which begins with the most forward-reaching ciliary shapes ($\phi=0$). (d) Accuracy of the time-stamping method. Grey dots represent the shapes stamped as $\phi = 0, 0.5\pi$, and π , respectively. Black lines represent the median shapes. (e,f) The average cycle of u and v . Solid lines and the shadings represent the median and the interquartile range for flows sample over ~ 40 cycles. All flow velocities are scaled by $U_0 = Lf \approx 600 \mu\text{m s}^{-1}$.

Because $u_S(t)$ is computed by solving the Stokes equations (2.3), where the entire fluid domain is in phase with the forcing, in the following sections, $u_S(t)$ is regarded as the reference signal and its phase represents the phase of the forcing (ciliary beating).

4. Asymptotic behaviour of the flow field around beating cilia

We start by investigating the asymptotic behaviour of the flow field around beating cilia, which includes the rates of spatial decay in the near field and far field of both the steady and the unsteady component of the ciliary flow, and the rate of spatial phase shift of the unsteady component. We measure the ciliary flow along the x -, y -, and z -axis, by sampling flow velocities along $(x, 0 \pm 5 \mu\text{m}, 0)$, $(0 \pm 5 \mu\text{m}, y, 0)$, and $(0 \pm 5 \mu\text{m}, 0 \pm 5 \mu\text{m}, z)$, respectively. The uncertainties of $\pm 5 \mu\text{m}$ result from aligning the measurement locations to the origin (the anchor point of cilia, figure 4d). Each dataset presented consists of 8–30 sampled points along a specific axis for a given cell. In total, the present study includes $N = 30$ cells and $N = 38$ datasets. Note that some cells were used to study the flow behaviour along more than one axis. Each cell is consistently represented by a specific symbol throughout the figures in this section. Most measurements are performed within a maximum distance of $\sim 160 \mu\text{m}$ and a minimum distance of $\sim L + 5 \mu\text{m}$ from the origin,

where L is the cilium length of each cell. L varies from 8 to 18 μm over the cells used in this study, and the average is $\bar{L} = 12 \mu\text{m}$. This minimum distance of $\sim L + 5 \mu\text{m}$ is chosen to avoid interference of the trapping laser and the trapped bead with the ciliary beating. We present a systematic study of the behaviours of both the axial and the lateral flow components along different axes. We compare the experimentally observed asymptotic behaviours to those of the reduced theoretical models of systems of stokeslets and oscillets, which sheds light on the nature of the ciliary flow. Practically, this knowledge can help build more accurate models in simulation, and hence potentially help us better understand ciliary synchronization.

4.1. Amplitude of the steady component

We first discuss the measurements of the steady component, i.e. the average flow. Figure 6 displays the axial average flow \bar{u} along the x -, y -, and z -axis, and the lateral average flow \bar{v} along the y -axis, respectively. Due to the symmetry of the breaststroke, \bar{v} along the x - and z -axis are approximately zero and therefore are not presented. The measurement settings are displayed by the schematics in each panel. Different markers represent different cells. Flow velocities are scaled by $U_0 = Lf$, with L and f the ciliary length and frequency, as U_0 accounts for the different sizes and frequencies over different cells. Distances are scaled by the characteristic length of vorticity diffusion $\delta = \sqrt{\mu/\rho f} \approx 140 \mu\text{m}$.

We find that both \bar{u} and \bar{v} follow a $1/r$ decay along the x -, y - and z -axis, figure 6, in agreement with Drescher *et al.* (2010) and Guasto *et al.* (2010). The experimental velocity measurements can be compared with the solution to the Stokes equations for a point force in the x -direction and located $h = 120 \mu\text{m} \approx 0.8\delta$ above a no-slip wall, obtained from the Blake tensor (Blake 1971). The dashed lines in figure 6 represent the amplitudes of the average flow along the different axes, computed with the Blake tensor, for a forcing strength of $F = 23.3 \text{ pN}$, corresponding to the force exerted by both flagella. We see that the rates of the spatial decay ($1/r$) are captured quantitatively for $r < h \approx 0.8\delta$. For distances r on the same order of magnitude as h , the spatial decay rate increases, which is consistent with the presence of the no-slip wall, see Blake's solution in figure 6(b). It is worth noticing that the flow amplitudes within the xy -plane are predicted accurately and simultaneously with the same point force (figure 6a,b,d). This indicates that the average flow created by captured *C. reinhardtii* cells within the ciliary beating plane can be accurately represented by a single stokeslet (Brumley *et al.* 2014). Lastly, we find the velocity magnitude to be smaller in the z -direction normal to the beating xy -plane, compared to the y -direction. This highlights the limitations of representing a cilium beating in a plane with an axisymmetric stokeslet.

4.2. Amplitude of the unsteady component

We now discuss the unsteady component of ciliary flow, or the oscillatory flow, $\mathbf{u}' = \mathbf{u} - \bar{\mathbf{u}}$. By definition, it generates zero net flow per cycle, and we thus report the decay of the amplitude of the oscillations, $\delta u'$ computed as half of the peak-to-peak amplitude of \mathbf{u}' . Figure 7 represents the axial ($\delta u'$) and the lateral ($\delta v'$) amplitude of the oscillatory flow, along the x -, y -, and z -axis. Cells are represented by the same symbols as used in figure 6. The important observation is that the asymptotic behaviour of the unsteady component differs markedly from that of the corresponding average component. The rates of spatial decay of the unsteady component are higher, see figure 7. While the amplitude of the average flow decays in $1/r$, the amplitude of the flow oscillations decays at a rate close to $1/r^3$. This difference in the asymptotic behaviours between the average (\bar{u} , \bar{v}) and the

Measurements of the unsteady flow field around beating cilia

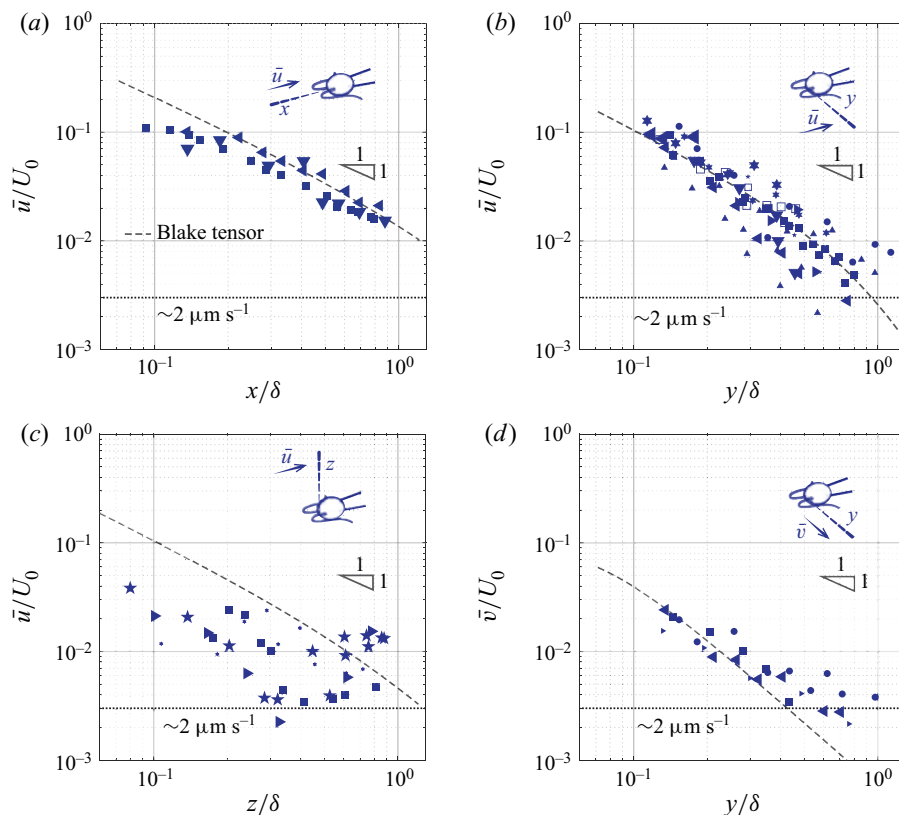


Figure 6. (a–c) Axial average flow (\bar{u}) measured along the x -, y -, and z -axis. (d) Lateral average flow (\bar{v}) measured along the ($\sim 2 \mu\text{m}$, y , 0), which is close to but slightly deviates from the y -axis. Measurement configurations are shown by the schematics respectively. Flow velocities are scaled by $U_0 = Lf \approx 600 \mu\text{m s}^{-1}$. Distances are scaled by $\delta \approx 140 \mu\text{m}$. Different markers represent different cells. Dashed lines: flow amplitudes of Blake's solution for a forcing strength $F = 23.3 \text{ pN}$.

oscillatory (u' , v') flow suggests that they are not governed by the same equations. A $1/r$ rate of decay is consistent with the Stokeslet solution to the Stokes equations, while a higher rate of decay observed is consistent with the oscillet solution to the unsteady Stokes equations. Further features are reminiscent of the oscillet solution. The spatial decay of $\delta u'$ becomes stronger than $1/r$ at shorter distances along the y - and z -axis, which are normal to the point force, compared to the x -axis, see figure 7(a–c). This is also the case for the oscillet (2.6). The decrease of $\delta v'$ along the y -axis, figure 7(d), is stronger than that of $\delta u'$ along the x -axis, figure 7(a), at short distances from the cilia. This is due to the fact that we measure the flow generated by two cilia, beating in an antisymmetric breaststroke. In the x -direction, the cilia beat in the same direction and the flow generated by each cilium in the x -direction contributes to the velocity u . In the y -direction on the other hand, the cilia beat in antisymmetric fashion, and the flows generated by each cilium tend to cancel each other out, leading to the observed faster rate of decay. It is noteworthy that along the y -direction, $\delta u'$ and $\delta v'$ are of similar amplitude in the vicinity of the cell, where the measured flow is predominantly created by the closest cilium figure 7(b,d). This is in contrast to the average flow, for which \bar{u} is significantly larger than \bar{v} , figure 6(b,d). Therefore, the unsteady flow

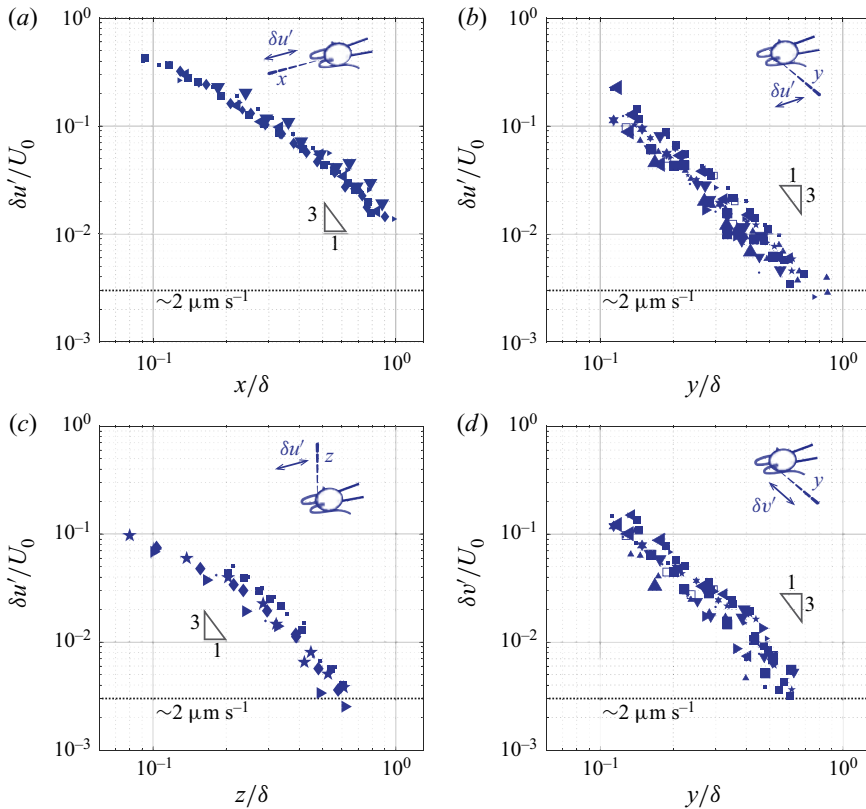


Figure 7. (a–c) Amplitude of the axial oscillatory flow ($\delta u'$) measured along the x -, y -, and z -axis. (d) Amplitude of the lateral oscillatory flow ($\delta v'$) measured along the y -axis. The symbols for different cells are consistent with the ones used in figure 6.

created by one beating cilium corresponds to oscillating forces along both the x - and the y -directions.

4.3. Phase shift of the unsteady component

The higher rate of decay is not the only difference between the fundamental solutions of the Stokes and the unsteady Stokes equations. A defining feature of solutions to the unsteady Stokes equation is the phase lag between the oscillations of the flow velocity and the forcing, which develops at increasing distances from the forcing. This phase lag is a characteristic of Stokes' second problem as well as of the oscillet. Here we measure this phase lag and present its asymptotic behaviour along different axes.

Figure 8 demonstrates the phase shift of the axial flow velocity at two locations along the y -axis. The OTV measurements, u (grey and blue), are overlaid with the BEM computations, u_s (red), which assume the flow to satisfy the Stokes equations, figure 8(a,b). Close to the cilia, $r = y = 23.0 \mu\text{m} \approx 0.16\delta$; the computed flow reproduces the measured flow accurately: they have the same amplitude and reach maximum and minimum simultaneously, figure 8(a). Farther away, at $r = y = 66.2 \mu\text{m} \approx 0.47\delta$, the amplitude of the measured oscillatory flow velocities is lower, and the oscillations are

Measurements of the unsteady flow field around beating cilia

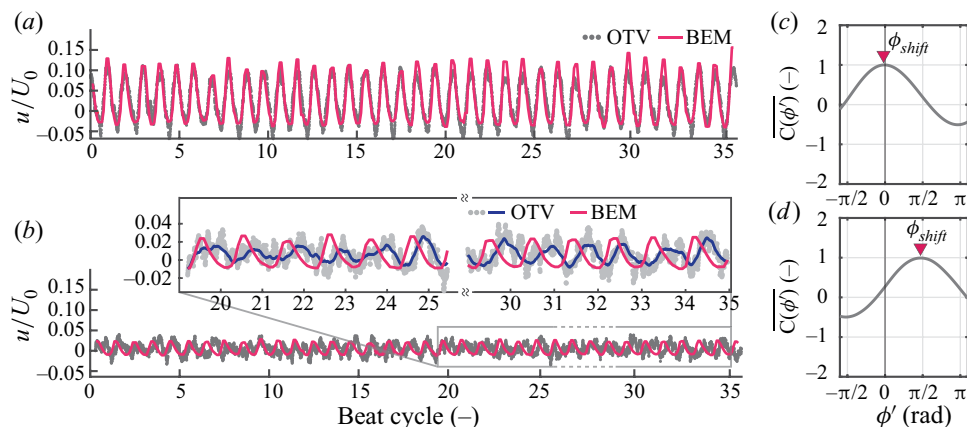


Figure 8. The flow velocity is phase-shifted at increasing distance. (a) Close to the cell on the lateral (y) side, $y = 23.0 \mu\text{m} \approx 0.16\delta$, experimental and computational results are in phase. (b) At a larger distance, $y = 66.2 \mu\text{m} \approx 0.47\delta$, the measured signal is phase-delayed. Inset: OTV raw data (grey), moving-window-averaged data (blue), and flow computed by BEM (red). (c,d) Using the cross-correlation function $C(\phi') = u(\phi + \phi') \star u_S(\phi)$ to quantify the phase shift between the OTV signal $u(\phi)$ and the BEM computation $u_S(\phi)$. $C(\phi')$ is the correlation $C(\phi')$ normalized. (a,b) Reprinted figure with permission from Wei *et al.* (2019). Copyright (2019) by the American Physical Society.

phase-shifted compared to the Stokes computations, figure 8(b) and inset. The phase shift is approximately $\pi/2$ and the two signals are in quadrature.

We quantify the spatial phase shift of ciliary flow by computing the cross-correlation function between the flow measured by OTV and that computed by BEM. For each recording, we proceed by first determining the ciliary phase $\phi(t)$ as described in the methodology section. This allows us to transform the measured and the computed time series of flow velocity, $u(t)$ and $u_S(t)$, as functions of the ciliary phase ϕ , or $u(\phi)$ and $u_S(\phi)$. Then, we compute the cross-correlation function $C(\phi') = u(\phi + \phi') \star u_S(\phi)$. The phase shift between the measured velocity and the velocity predicted by the Stokes equations corresponds to the phase for which the cross-correlation function reaches a maximum, $C_{max} = C(\phi_{shift})$. In figure 8(c,d) we plot the normalized cross-correlation function, $\overline{C(\phi')} = C(\phi')/C_{max}$, between the signals shown in figures 8(a) and 8(b), respectively. In the vicinity of the cell, $r \approx 0.16\delta$, $\phi_{shift} \approx 0$; while at a larger distance, $r \approx 0.47\delta$, $\phi_{shift} \approx \pi/2$.

We further characterize the phase shift of both the axial (u') and the lateral (v') oscillatory flow, along the x -, y -, and z -axis, and over the xy -plane. For consistency and simplicity, we denote the spatial phase shift ϕ_{shift} of u and v as $\theta_u(\mathbf{r})$ and $\theta_v(\mathbf{r})$ respectively in the following parts.

In figure 9 we present θ_u along the x , y , and z -axis, and θ_v along the y -axis, respectively. Cells are represented by the same symbols as used in figures 6 and 7. For each case, there is a clear phase shift between the measured flow and the forcing, which increases with the distance to the cilia. The increase of this phase-delay is highly dependent on the direction, as can be seen from the different slopes in figure 9. The phase-delay is 2–3 times stronger along directions perpendicular to the oscillating velocity, compared to the direction of the oscillating force. Quantitatively, the slopes for θ_u along the x -axis and θ_v along the y -axis are $0.30\pi/\delta$ and $0.52\pi/\delta$, respectively, figures 9(a) and 9(d); while the slopes for θ_u along the y - and the z -axis are $1.08\pi/\delta$ and $1.16\pi/\delta$, respectively, figures 9(b) and 9(c). The significant difference in the phase-delay along the different directions agrees with

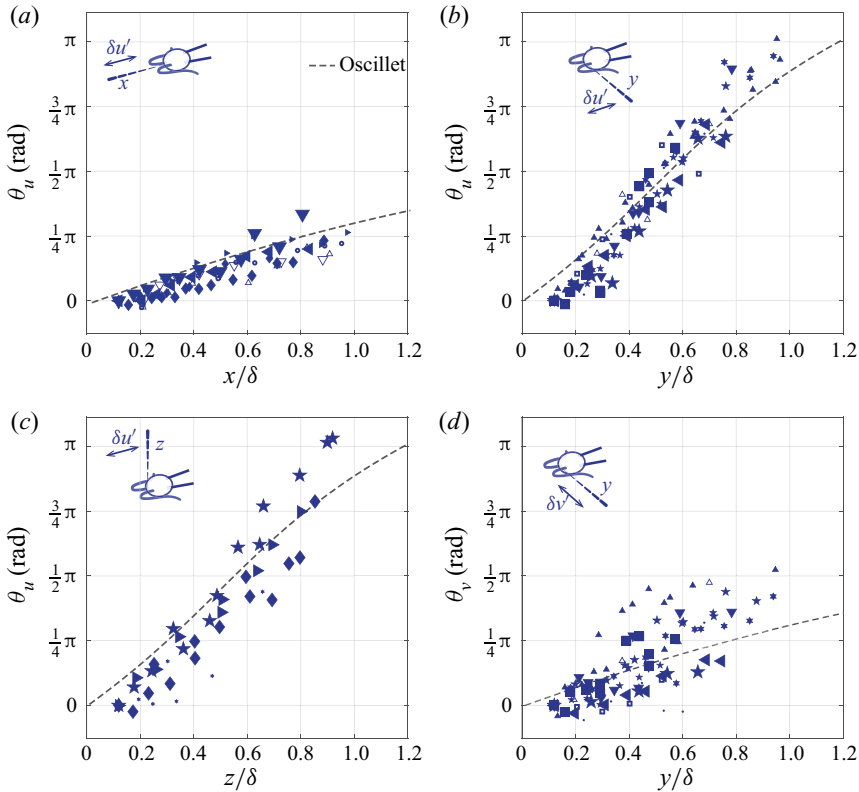


Figure 9. (a–c) Phase delay of the axial oscillatory flow (θ_u) along the x -, y -, and z -axis. (d) Phase delay of the lateral oscillatory flow (θ_v) along the y -axis. Dashed lines: corresponding phase delay predicted by an oscillet located at the origin, with oscillating force along the x -axis (a–c) and the y -axis (d), respectively. The symbols for different cells are consistent with the ones used in figures 6 and 7.

the oscillet solution. The dashed line in each panel represents the corresponding phase shift predicted by an oscillet located at the origin (figure 3b). Figure 9(a–c) correspond to an oscillet with oscillating force along the x -axis and figure 9(d) corresponds to an oscillet with oscillating force along the y -axis. The predictions are in agreement with the experimental results. Note that the resemblance between θ_u along y - and z -axis (figure 9b,c) reflects the axisymmetry of an oscillet (2.6).

5. Unsteady velocity fields in the beating plane of cilia

In the previous section we have systematically studied the asymptotic behaviours of the flow created by beating cilia and found them to be in qualitative agreement with the oscillet. We further proceed to resolve the spatiotemporal features of the entire flow field around beating cilia and perform time-resolved direct numerical simulations (DNS) to compare with our measurements and the BEM simulations.

5.1. OTV measurements of the entire flow field

The time-resolved flow field over the xy -plane is reconstructed from measurements performed at points r_i on a rectangular grid on one side of a cell. The grid covers the area where $x \in [-30, 30] \mu\text{m}$ and $y \in [0, 160] \mu\text{m}$ with a grid size of $10 \mu\text{m}$. In total,

Measurements of the unsteady flow field around beating cilia

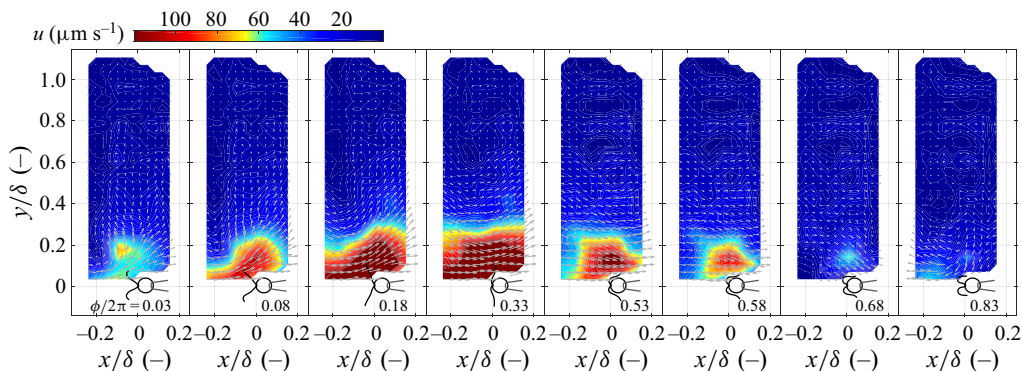


Figure 10. Ciliary flow field measured experimentally. Snapshots of flow field are taken at the time when the cilia display shown shapes. Vector field: flow velocity; contour: flow speed. Both axes are scaled by $\delta = \sqrt{\mu/\rho f} \approx 140 \mu\text{m}$. Data corresponding to the experimentally measured velocity field are available through the 4TU.center for research data (Tam & Wei 2021).

there are $N = 78$ sampling points. At each point, OTV measurements were carried out at 10 kHz for 5 s, and high speed videography was performed simultaneously at a frame rate of 669 Hz. Each recording is time-stamped in order to construct the ciliary phase ϕ for ~ 40 – 50 consecutive beats, following the methodology detailed previously (§ 3.2). The time series of velocity measurements are interpolated at $N = 20$ equally spaced phases ϕ_j ($j = 1, 2, \dots, 20$) between $\phi = 0$ and 2π , and the velocity measurements over the consecutive beats are binned for each of the phases ϕ_j . The flow velocity $\mathbf{u}(\mathbf{r}_i, \phi)$ at each measurement location \mathbf{r}_i , is calculated as the median of the marked cycles. Figure 5(e,f) display the median flow velocity cycles and the interquartile ranges that are calculated based on the signals shown in figure 5(b,c). Snapshots of the flow velocity field on the xy -plane for each phase ϕ_j are obtained through two dimensional linear interpolation of the velocity between the sampling points \mathbf{r}_i .

Figure 10 represents the time-resolved flow field around a single captured cell. The panels show the reconstructed flow field at different instants that correspond approximately to the shown ciliary phase ϕ . The vector field represents the velocity field, and the contours represent the magnitude of the velocity.

5.2. Numerical simulation: DNS-BEM method

We perform direct numerical simulations (DNS), which solves the Navier–Stokes equations (2.1), in order to compare these with our measurements of the unsteady velocity field. The DNS solution includes the effects of all terms of Navier–Stokes equations, including the unsteady and the nonlinear ones, see (2.1). Here, we use a structured Cartesian grid. The implementation of our numerical approach makes use of the BEM solution, described earlier in § 3.3, to propagate the no-slip boundary condition to the grid point immediately surrounding the fluid/solid interface.

We do this by dividing the computational domain into an inner and an outer region. The inner region corresponds to the flow domain in the direct vicinity of the cilia, the cell body and the pipette, see region marked pink and grey in figure 11. In this region, the Stokes equations remain valid, and the solution on the nodes within this region is computed using the BEM method described in § 3.3, which appropriately imposes the no-slip boundary condition at the surfaces of the cilia, the cell body and the pipette. This allows the no-slip

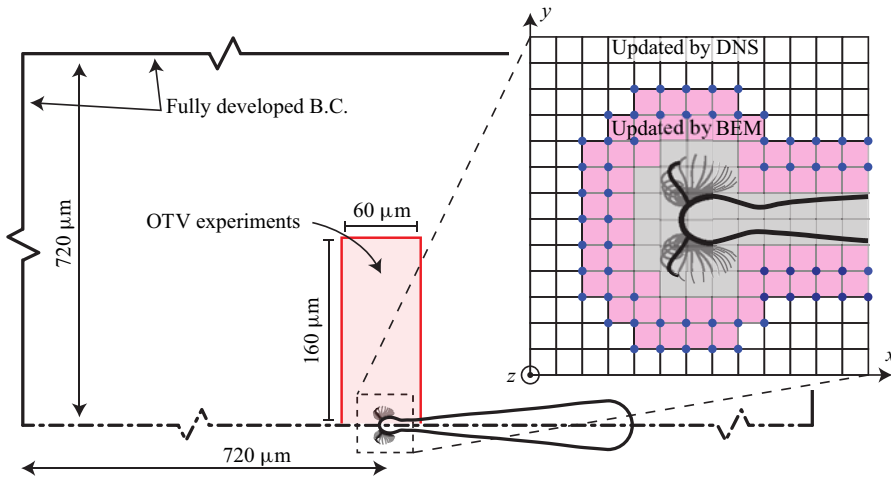


Figure 11. Schematic of the computational domain for the DNS-BEM simulations. The total domain size is $720\ \mu\text{m}$ in the z -direction and $1440\ \mu\text{m}$ in the x - and y -directions, with a grid size of $4\ \mu\text{m}$. The cell is located in the center of the computational domain. The red shaded region corresponds to the area where the OTV experiments are performed. The inset shows the inner and outer regions. Within the inner region (coloured with grey and pink), the velocity is computed by the BEM method and used as velocity boundary conditions for the DNS simulations. For the rest of the domain, the velocity is computed with DNS with all boundary conditions shown.

boundary condition to be transferred to the neighbouring grid nodes. In practice, the inner region includes the nodes covered by the cell and the pipette, the nodes swiped across by the cilia during a beat and the nodes within two grid cells outwards from these (pink region in figure 11).

The outer region corresponds to the rest of the computational domain, which represents the space between $x = 0$ and $x = 1440\ \mu\text{m}$, $y = 0$ and $y = 1440\ \mu\text{m}$, and $z = 0$ and $z = 720\ \mu\text{m}$. In the outer region, the Navier–Stokes equations (2.1) are solved using the finite volume scheme, operator splitting and the solenoidal projection technique (Pozrikidis 2016), on a staggered grid with discretization size of $4\ \mu\text{m}$. A second-order Adams–Bashforth scheme is used for explicit time integrations. Lastly, free slip boundary conditions are applied on $z = 0$ and $z = 720\ \mu\text{m}$, and fully developed boundary conditions on $x, y = 0$, $x, y = 1440\ \mu\text{m}$, as shown in figure 11. We confirm that the size of the computational domain is large enough so that the boundary conditions on the edge of the domain have a negligible effect on the flow velocity within our experimentally measured region (the red rectangle in figure 11).

5.3. Phase shift over the ciliary beating plane

We have previously highlighted the anisotropy in phase lag along axes parallel and normal to the force direction (§ 4.3). Here, we consider the axial component of the oscillatory flow (u') and present the spatial phase shift ($\theta_u(x, y)$) between the flow velocity measured experimentally and computed by the DNS-BEM approach, see figure 12.

From the experimental results shown in figure 12(a), we see that the contours of equal phase shift are not conspherical, i.e. the increase in phase is not isotropic. They have a notch shape or a V-shape in the y -direction normal to the force direction. This feature indicates that the phase shift increases the fastest along the lateral (y) direction and the slowest along the axial (x) direction, as shown in figure 9(a–c), and that the phase shift

Measurements of the unsteady flow field around beating cilia

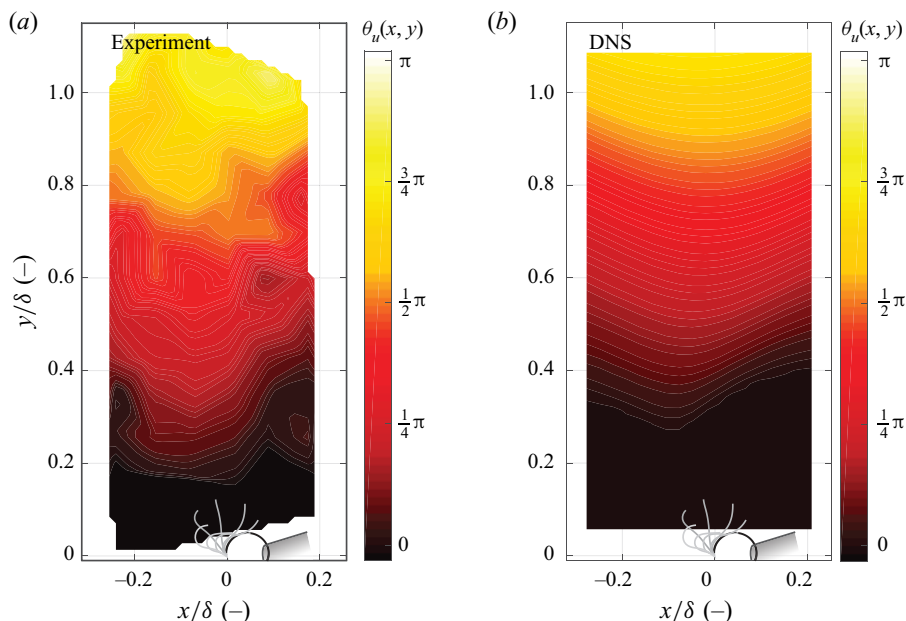


Figure 12. (a) Experimentally measured phase shift of the axial oscillatory flow over the ciliary beating plane, or $\theta_u(x, y)$. (b) Same phase shift computed by the DNS-BEM approach.

along $x \approx -0.1\delta$ is the maximum. The phase lag in the velocity field therefore strongly depends on the relative spatial position. Due to the axisymmetry between the y and z , the phase shift contour in the xz -plane is expected to be the same as our results for the xy -plane, while the contours of equal phase over the yz -plane are expected to be concentric circles.

The measured phase lag field (figure 12a) is similar to the one predicted by the oscilllet solution (figure 3a) and in quantitative agreement with the phase lag field computed from our simulations (figure 12b). For both experiments and simulations, the V-shape equal phase contours have a maximum phase shift along $x \approx -0.1\delta$. These results have implications in studies of hydrodynamic synchronization between cilia. The oscillatory flow has the strongest contribution to the hydrodynamic interaction and is 2–5 times larger in amplitude than the average flow, see figures 6 and 7.

5.4. Vorticity diffusion

Finally, we characterize spatiotemporal features of the flow field around beating cilia in the xy -plane. As discussed in § 2.1, the fundamental difference between the steady and the unsteady Stokes equations is the quasi-steady assumption, which neglects the time scale for vorticity (momentum) to diffuse. We deduce the vorticity field from the point measurements of the velocity (figure 13). Snapshots of the vorticity field at different times during a ciliary beat are presented for the unsteady velocity fields measured experimentally and for the fields computed by the DNS and the BEM approach in figures 13(a), 13(b), and 13(c) respectively. From left to right, columns 1–5 are during the power stroke and 6–8 the recovery stroke.

The computed vorticity field around a beating cilium (figure 13b,c) can be compared with the those of the stokeslet and the oscilllet (figure 2a,b). The no-slip boundary conditions on beating cilia lead to more complex spatiotemporal patterns than the point forces. The vorticity fields are not symmetric around the $x = 0$ axis while the fields

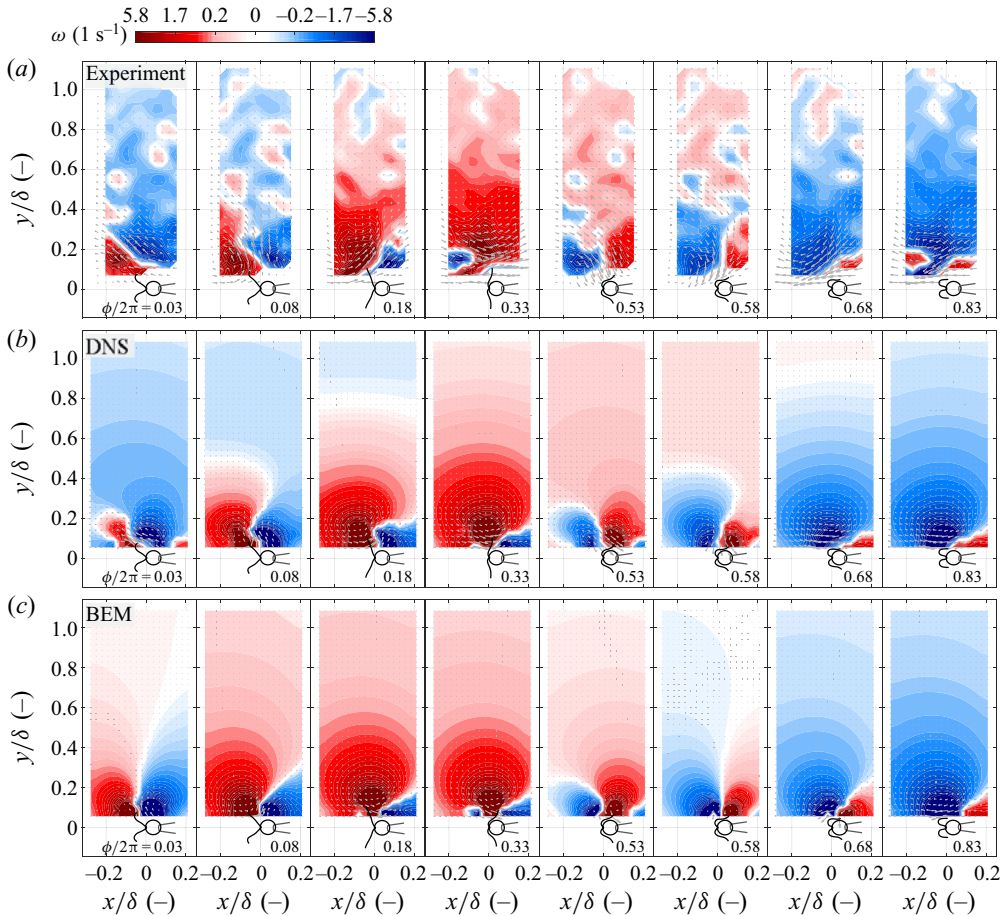


Figure 13. Vorticity field measured experimentally (a), and computed with the DNS (b) and the BEM (c). The vorticity $\omega = \nabla \times \mathbf{u}$ at different times during the power stroke and the recovery stroke are displayed. Corresponding ciliary shape and ciliary phase ϕ are shown for each panel. Grey arrows: the unsteady velocity component. Data corresponding to the experimentally measured (a) and computed (b) vorticity fields are available through the 4TU.center for research data (Tam & Wei 2021).

associated with the point-force are. The sign of vorticity changes in front of the cilia, at $x \approx -0.18$, see figure 13, at $\phi/2\pi = 0.08$ at the beginning of the power stroke and at $\phi/2\pi = 0.58$ during the recovery stroke.

The BEM solution (figure 13c) differs from the DNS solution (figure 13b) similarly to how stokeslets differ from oscillets. This is best seen in the middle of the power stroke at $\phi/2\pi = 0.18$ and in the middle of the recovery stroke at $\phi/2\pi = 0.68$. In both cases, the vorticity immediately surrounding the cilia has a different sign compared to that far away from the cilia at $y/\delta \geq 0.8$. This is due to the finite time required for the vorticity to diffuse, which is captured by the DNS solution (figure 13b) but not by the BEM solution solving the Stokes equations (figure 13c).

The vorticity field reconstructed from the OTV measurements (figure 13a) is most similar to the DNS simulations. The point of sign inversion in the vorticity field can be seen to diffuse away from the cilia, signifying the importance of taking into account the unsteady effect.

Measurements of the unsteady flow field around beating cilia

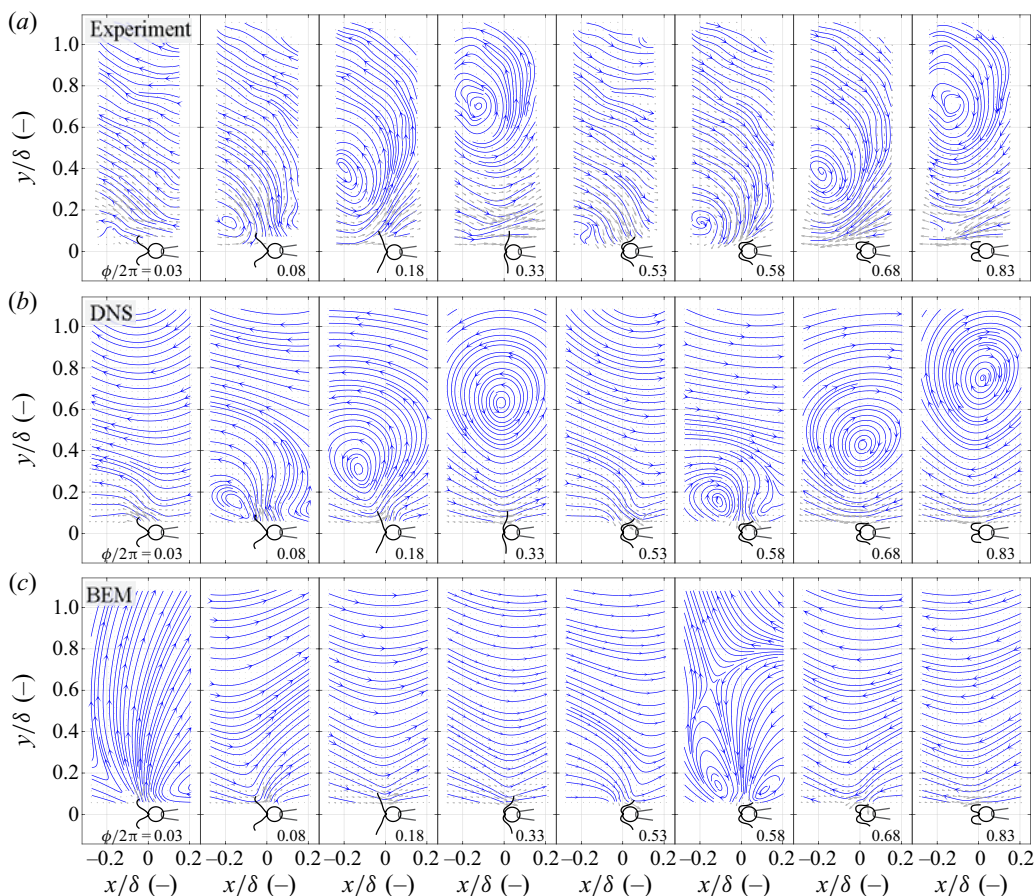


Figure 14. Velocity field measured experimentally (a), and computed with the DNS (b) and the BEM (c), visualized by streamlines. Data corresponding to the streamlines obtained from the measured (a) and computed (b) velocity fields are available through the 4TU.center for research data (Tam & Wei 2021).

The agreement between the DNS simulations and the experimental measurements can be clearly seen when considering the director field of the flow velocity. To allow a better comparison with the oscillet, we represent the director field of the oscillatory component \mathbf{u}' , for which the average flow has been subtracted. Figure 14 represents the streamlines associated with the \mathbf{u}' field for the same snapshots as in figure 13. The pattern of streamlines obtained from the experimental data (figure 14a) is in agreement with the DNS simulations (figure 14b). Both include closed streamlines around a stagnation point, on each side of which the flow direction changes. These closed streamlines are clearly absent in the BEM simulations (figure 14c), which assume Stokes flow. The closed streamlines are created in the vicinity of the cilia at the beginning of both the power and recovery strokes, and propagate away from the cell along the y -axis, see figure 14. The streamline pattern has a typical signature, which is also in close agreement with that of the oscillet and very different from that of a stokeslet, see figure 1.

We quantify the time scale for the propagation of the closed streamlines away from the cilia. We do this by tracking the stagnation point at the centre of these closed streamlines (x_o, y_o), which also corresponds to the flow inversion point. The tracking of the inversion point is represented in figure 15 for the experimental fields, the DNS

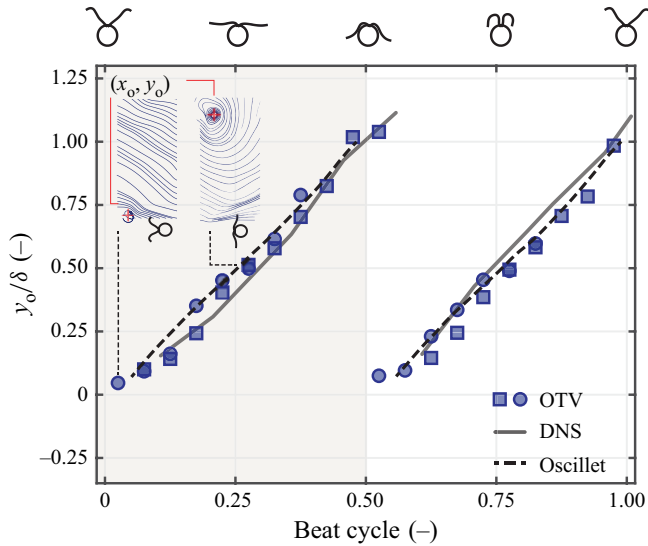


Figure 15. The propagation of the stagnation point. Inset: two panels from left to right show the creation of the stagnation point and its propagation after approximately 1/4 cycle. The stagnation point is marked by the red cross: (x_o, y_o) . Squares and circles: experiments performed with two different cells, with the squares representing the cell used for § 5. The shaded area marks the power stroke.

solution and the oscillet. The inset demonstrates how we mark the stagnation point, (x_o, y_o) (red crosses). During the propagation, x_o remains approximately unchanged, and we thus focus on y_o . We report the results for two typical cells presented with different markers. Our experimental measurements are in striking agreement with the DNS simulations and the oscillet. In all datasets, the stagnation point propagates to a distance of $r = \delta$ after approximately half a cycle. Thus, for *C. reinhardtii*, the diffusive time scale of vorticity is $\tau \approx 1/2f \approx 10$ ms.

The measured time scale of vorticity diffusion also provides another way to consider the spatial phase shift of the unsteady flow. In figure 15, the linear best-fit to the experimental results gives a speed of vortex propagation of $dy_o/dt = 2.10\delta$ per cycle (2π). This is equal to a phase delay of $0.95\pi/\delta$, which agrees well with the rate of phase shift θ_u along the y -axis reported previously in § 4.3, $\partial\theta_u/\partial y \approx 1.08\pi/\delta$, see figure 9(b).

6. Conclusion

By exploiting the high spatial and temporal resolution of the OTV technique, we are able to systematically characterize the steady and unsteady components of the flow created by beating cilia. We first resolve the flows’ asymptotic behaviours along different axes, and compare those behaviours with fundamental solutions to the steady and unsteady Stokes equations. Finally, we characterize the unsteady velocity field over the entire ciliary beating plane to resolve its spatiotemporal dynamics. Experimental results are compared again with numerical simulations, and are found to be in agreement with the solution to the unsteady Stokes equations and to show significant differences with the solution to Stokes equations.

For the steady component of the ciliary flow, we find that the average velocity field can be well reproduced by the Stokes equations, in agreement with previous studies (Drescher *et al.* 2010; Guasto *et al.* 2010). Moreover, for a captured *C. reinhardtii* cell, the average

flow velocity generated by both flagella along the x and y axes can be quantitatively reproduced with a single stokeslet of magnitude $F = 23.3 \pm 8.3$ pN (mean \pm std) and its image system due to the no-slip wall (Blake's solution). For the unsteady component (the oscillatory flow), we measure the rates of decay and the rates of phase shift along different axes. We show that they decay faster than the average flow, which indicates that the governing equations for these two components must be different, and we show that the decay rates are closer to those predicted by the unsteady Stokes equations.

We present the time-resolved ciliary flow field over the beating plane. Our experimental results reveal rich spatiotemporal dynamics of the unsteady velocity field. By comparing the experimental results with the computed flow fields of an oscillet, that from the direct numerical simulations (DNS) and that computed with the boundary element method (BEM), we are able to visualize and characterize the finite scale of vorticity diffusion. We discuss an important consequence of the finite time scale for vorticity diffusion, namely, the phase-lag between the velocity and the forcing.

In cilia carpets, the synchronization of cilia beating is characterized by metachronal rhythm, which originates from a spatially organized phase delay, between thousands of cilia. Our study shows that there is a simple phase delay built into the physics of hydrodynamic interactions, that could influence metachrony. We measure an increase in the phase delay due to the unsteady nature of the flow, which reaches $1.16\pi/\delta \approx 0.026$ rad μm^{-1} . This value is comparable to the phase delay characterizing the metachronal wave in *Volvox* and reported in Brumley *et al.* (2012), while it is smaller than those observed in *Paramecium* (Funfak *et al.* 2014) or *Schmidtea mediterranea* (Rompolas, Patel-King & King 2010). While the origin of metachrony remains unclear, an accurate representation of the hydrodynamic interactions between the cilia should account, in some cases, for the unsteady effects and the phase lag characterized here.

For oscillatory flows on the micro-scale, our results highlight the importance of taking into account unsteady effects, even over length scales which are shorter than the characteristic diffusive length scale $\delta = \sqrt{\mu/\rho f}$. Indeed, the induced phase delays are already significant, and reaching $\pi/2$ at distances $r \approx 0.5\delta$. One particular example is the hydrodynamics of sperm cells, for which the beating frequencies range over 10–100 Hz and the length of the flagellum can reach 100 μm . For such flows, unsteady effects may already be of importance and, in certain cases, non-local slenderbody theory may require a correction to take these into account.

Our results confirm the breakdown of the quasi-steady approximation assumed by the Stokes equations, and reveal the unsteady nature of ciliary flow field. The study highlights the limit of using stokeslets to represent unsteady flows generated by beating cilia, microswimmers and more generally oscillatory micro-scale flows. The study highlights that the fundamental solution to the unsteady Stokes equations, the oscillet (2.6), can be used to represent such unsteady flows.

Acknowledgements. The authors thank R. Kieffer for technical support.

Funding. The work was supported by the European Research Council (ERC Starting grant no. 716712) and the Netherlands Organization for Scientific Research (Frontiers of Nanoscience program).

Declaration of interests. The authors report no conflict of interest.

Author ORCIDs.

-  Da Wei <http://orcid.org/0000-0002-6226-0639>;
-  Parviz G. Dehnavi <http://orcid.org/0000-0001-7531-3675>;
-  Marie-Eve Aubin-Tam <https://orcid.org/0000-0001-9995-2623>;
-  Daniel Tam <https://orcid.org/0000-0001-5300-0889>.

Author contributions. D. Wei and P.G. Dehnavi have contributed equally to this work. All authors designed the research. D. Wei conducted the experiments, analyzed the data, and drafted the manuscript. P.G. Dehnavi designed and performed the flow field computations. All authors revised the manuscript.

REFERENCES

- ALMENDAREZ-RANGEL, P., MORALES-CRUZADO, B., SARMIENTO-GÓMEZ, E., ROMERO-MÉNDEZ, R. & PÉREZ-GUTIÉRREZ, F.G. 2018 A microflow velocity measurement system based on optical tweezers: a comparison using particle tracking velocimetry. *Eur. J. Mech. (B/Fluids)* **72**, 561–566.
- AMADOR, G.J., WEI, D., TAM, D. & AUBIN-TAM, M.-E. 2020 Fibrous flagellar hairs of *Chlamydomonas reinhardtii* do not enhance swimming. *Biophys. J.* **118** (12), 2914–2925.
- BLAKE, J.R. 1971 A note on the image system for a stokeslet in a no-slip boundary. *Math. Proc. Cambridge Philos. Soc.* **70** (2), 303–310.
- BRENNEN, C. 1974 An oscillating-boundary-layer theory for ciliary propulsion. *J. Fluid Mech.* **65** (4), 799–824.
- BRUMLEY, D.R., POLIN, M., PEDLEY, T.J. & GOLDSTEIN, R.E. 2012 Hydrodynamic synchronization and metachronal waves on the surface of the colonial alga *Volvox carteri*. *Phys. Rev. Lett.* **109**, 268102.
- BRUMLEY, D.R., WAN, K.Y., POLIN, M. & GOLDSTEIN, R.E. 2014 Flagellar synchronization through direct hydrodynamic interactions. *eLife* **3**, e02750.
- BRUOT, N., CICUTA, P., BLOOMFIELD-GADÉLHA, H., GOLDSTEIN, R.E., KOTAR, J., LAUGA, E. & NADAL, F. 2020 Direct measurement of unsteady microscale stokes flow using optically driven microspheres. [arXiv:2010.14873](https://arxiv.org/abs/2010.14873)
- CHAKRABARTI, B. & SAINTILLAN, D. 2019a Hydrodynamic synchronization of spontaneously beating filaments. *Phys. Rev. Lett.* **123**, 208101.
- CHAKRABARTI, B. & SAINTILLAN, D. 2019b Spontaneous oscillations, beating patterns, and hydrodynamics of active microfilaments. *Phys. Rev. Fluids* **4**, 043102.
- DEHNAVI, P.G., WEI, D., AUBIN-TAM, M.-E. & TAM, D.S.W. 2020 Optical tweezers-based velocimetry: a method to measure microscale unsteady flows. *Exp. Fluids* **61** (9), 202.
- DING, Y., NAWROTH, J.C., MCFALL-NGAI, M.J. & KANSO, E. 2014 Mixing and transport by ciliary carpets: a numerical study. *J. Fluid Mech.* **743**, 124–140.
- DRESCHER, K., DUNKEL, J., CISNEROS, L.H., GANGULY, S. & GOLDSTEIN, R.E. 2011 Fluid dynamics and noise in bacterial cell–cell and cell–surface scattering. *Proc. Natl Acad. Sci.* **108** (27), 10940–10945.
- DRESCHER, K., GOLDSTEIN, R.E., MICHEL, N., POLIN, M. & TUVAL, I. 2010 Direct measurement of the flow field around swimming microorganisms. *Phys. Rev. Lett.* **105** (16), 168101.
- ELGETI, J., KAUPP, U.B. & GOMPPER, G. 2010 Hydrodynamics of sperm cells near surfaces. *Biophys. J.* **99** (4), 1018–1026.
- ELGETI, J., WINKLER, R.G. & GOMPPER, G. 2015 Physics of microswimmers—single particle motion and collective behaviour: a review. *Rep. Prog. Phys.* **78** (5), 056601.
- FARRÉ, A., MARSÀ, F. & MONTES-USATEGUI, M. 2012 Optimized back-focal-plane interferometry directly measures forces of optically trapped particles. *Opt. Express* **20** (11), 12270–12291.
- FLIEGAUF, M., BENZING, T. & OMRAN, H. 2007 When cilia go bad: cilia defects and ciliopathies. *Nat. Rev. Mol. Cell Biol.* **8**, 880–893.
- FRIEDRICH, B.M. & JÜLICHER, F. 2007 Chemotaxis of sperm cells. *Proc. Natl Acad. Sci.* **104** (33), 13256–13261.
- FRIEDRICH, B.M. & JÜLICHER, F. 2012 Flagellar synchronization independent of hydrodynamic interactions. *Phys. Rev. Lett.* **109**, 138102.
- FUNFAK, A., FISCH, C., ABDEL MOTAAL, H.T., DIENER, J., COMBETTES, L., BAROUD, C.N. & DUPUIS-WILLIAMS, P. 2014 Paramecium swimming and ciliary beating patterns: a study on four RNA interference mutations. *Integr. Biol.* **7** (1), 90–100.
- GEYER, V.F., JÜLICHER, F., HOWARD, J. & FRIEDRICH, B.M. 2013 Cell-body rocking is a dominant mechanism for flagellar synchronization in a swimming alga. *Proc. Natl Acad. Sci. USA* **110** (45), 18058–18063.
- GINGER, M.L., PORTMAN, N. & MCKEAN, P.G. 2008 Swimming with protists: perception, motility and flagellum assembly. *Nat. Rev. Microbiol.* **6**, 838–850.
- GITTES, F. & SCHMIDT, C.F. 1998 Interference model for back-focal-plane displacement detection in optical tweezers. *Opt. Lett.* **23** (1), 7–9.
- GUASTO, J.S., JOHNSON, K.A. & GOLLUB, J.P. 2010 Oscillatory flows induced by microorganisms swimming in two dimensions. *Phys. Rev. Lett.* **105**, 168102.

Measurements of the unsteady flow field around beating cilia

- GUIRAO, B. & JOANNY, J.-F. 2007 Spontaneous creation of macroscopic flow and metachronal waves in an array of cilia. *Biophys. J.* **92** (6), 1900–1917.
- GUO, H., FAUCI, L., SHELLEY, M. & KANSO, E. 2018 Bistability in the synchronization of actuated microfilaments. *J. Fluid Mech.* **836**, 304–323.
- HALBERT, S.A., PATTON, D.L., ZARUTSKIE, P.W. & SOULES, M.R. 1997 Function and structure of cilia in the fallopian tube of an infertile woman with Kartagener's syndrome. *Hum. Reprod.* **12** (1), 55–58.
- ISHIKAWA, T., SIMMONDS, M.P. & PEDLEY, T.J. 2006 Hydrodynamic interaction of two swimming model micro-organisms. *J. Fluid Mech.* **568**, 119–160.
- ISHIMOTO, K. 2013 A spherical squirming swimmer in unsteady stokes flow. *J. Fluid Mech.* **723**, 163–189.
- ISHIMOTO, K., GADÉLHA, H., GAFFNEY, E.A., SMITH, D.J. & KIRKMAN-BROWN, J. 2018 Human sperm swimming in a high viscosity mucus analogue. *J. Theor. Biol.* **446**, 1–10.
- KEAVENY, E.E. & SHELLEY, M.J. 2011 Applying a second-kind boundary integral equation for surface tractions in stokes flow. *J. Comput. Phys.* **230** (5), 2141–2159.
- KELLER, J.B. & RUBINOW, S.I. 1976 Slender-body theory for slow viscous flow. *J. Fluid Mech.* **75** (4), 705–714.
- KIM, S. & KARRILA, S.J. 2013 *Microhydrodynamics: Principles and Selected Applications*. Dover Publications.
- KLINDT, G.S. & FRIEDRICH, B.M. 2015 Flagellar swimmers oscillate between pusher- and puller-type swimming. *Phys. Rev. E* **92**, 063019.
- LANG, M.J., ASBURY, C.L., SHAEVITZ, J.W. & BLOCK, S.M. 2002 An automated two-dimensional optical force clamp for single molecule studies. *Biophys. J.* **83** (1), 491–501.
- LAUGA, E. & MICHELIN, S. 2016 Stresslets induced by active swimmers. *Phys. Rev. Lett.* **117** (14), 148001.
- LAUGA, E. & POWERS, T.R. 2009 The hydrodynamics of swimming microorganisms. *Rep. Prog. Phys.* **72** (9), 096601.
- LI, G., OSTACE, A. & ARDEKANI, A.M. 2016 Hydrodynamic interaction of swimming organisms in an inertial regime. *Phys. Rev. E* **94**, 053104.
- LUSHI, E., KANTSLE, V. & GOLDSTEIN, R.E. 2017 Scattering of biflagellate microswimmers from surfaces. *Phys. Rev. E* **96** (2), 023102.
- MATHIJSSSEN, A.J.T.M., PUSHKIN, D.O. & YEOMANS, J.M. 2015 Tracer trajectories and displacement due to a micro-swimmer near a surface. *J. Fluid Mech.* **773**, 498–519.
- MEINHART, C.D., WERELEY, S.T. & SANTIAGO, J.G. 1999 PIV measurements of a microchannel flow. *Exp. Fluids* **27** (5), 414–419.
- NIEDERMAYER, T., ECKHARDT, B. & LENZ, P. 2008 Synchronization, phase locking, and metachronal wave formation in ciliary chains. *Chaos* **18** (3), 037128.
- PEPPER, R.E., ROPER, M., RYU, S., MATSUMOTO, N., NAGAI, M. & STONE, H.A. 2013 A new angle on microscopic suspension feeders near boundaries. *Biophys. J.* **105** (8), 1796–1804.
- POELMA, C., VENNEMANN, P., LINDKEN, R. & WESTERWEEL, J. 2008 In vivo blood flow and wall shear stress measurements in the vitelline network. *Exp. Fluids* **45** (4), 703–713.
- POOLEY, C.M., ALEXANDER, G.P. & YEOMANS, J.M. 2007 Hydrodynamic interaction between two swimmers at low Reynolds number. *Phys. Rev. Lett.* **99**, 228103.
- POWER, H. & MIRANDA, G. 1987 Second kind integral equation formulation of stokes' flows past a particle of arbitrary shape. *SIAM J. Appl. Math.* **47** (4), 689–698.
- POZRIKIDIS, C. 2011 *Introduction to Theoretical and Computational Fluid Dynamics*. Oxford University Press.
- POZRIKIDIS, C. 2016 *Fluid Dynamics: Theory, Computation, and Numerical Simulation*. Springer.
- PURCELL, E.M. 1977 Life at low Reynolds number. *Am. J. Phys.* **45** (1), 3–11.
- QUARANTA, G., AUBIN-TAM, M.-E. & TAM, D. 2015 Hydrodynamics versus intracellular coupling in the synchronization of eukaryotic flagella. *Phys. Rev. Lett.* **115**, 238101.
- RAINA, J.-B., FERNANDEZ, V., LAMBERT, B., STOCKER, R. & SEYMOUR, J.R. 2019 The role of microbial motility and chemotaxis in symbiosis. *Nat. Rev. Microbiol.* **17** (5), 284–294.
- RIEDEL-KRUSE, I.H., HILFINGER, A., HOWARD, J. & JÜLICHER, F. 2007 How molecular motors shape the flagellar beat. *HFSP J.* **1** (3), 192–208.
- ROMPOLAS, P., PATEL-KING, R.S. & KING, S.M. 2010 An outer arm Dynein conformational switch is required for metachronal synchrony of motile cilia in planaria. *Mol. Biol. Cell* **21** (21), 3669–3679.
- SAINTILLAN, D. 2018 Rheology of active fluids. *Annu. Rev. Fluid Mech.* **50** (1), 563–592.
- SAINTILLAN, D. & SHELLEY, M.J. 2007 Orientational order and instabilities in suspensions of self-locomoting rods. *Phys. Rev. Lett.* **99** (5), 058102.
- SATIR, P. & CHRISTENSEN, S.T. 2007 Overview of structure and function of mammalian cilia. *Annu. Rev. Physiol.* **69** (1), 377–400.

- SMITH, D.J., GAFFNEY, E.A., BLAKE, J.R. & KIRKMAN-BROWN, J.C. 2009 Human sperm accumulation near surfaces: a simulation study. *J. Fluid Mech.* **621**, 289–320.
- STOKES, G.G. 1851 On the effect of the internal friction of fluids on the motion of pendulums. *Trans. Camb. Phil. Soc.* **9** (8), 0–0.
- TAKAGI, D. & STRICKLER, J.R. 2020 Active hydrodynamic imaging of a rigid spherical particle. *Sci. Rep.* **10** (1), 2665.
- TAM, D. & HOSOI, A.E. 2007 Optimal stroke patterns for Purcell’s three-link swimmer. *Phys. Rev. Lett.* **98**, 068105.
- TAM, D. & HOSOI, A.E. 2011 Optimal feeding and swimming gaits of biflagellated organisms. *Proc. Natl Acad. Sci. USA* **108** (3), 1001–1006.
- TAM, D. & WEI, D. 2021 Optical tweezers-based velocimetry (OTV) measurements of unsteady flow fields around cilia. *4TU.ResearchData. Dataset.* doi:10.4121/13653233.v1
- THEERS, M. & WINKLER, R.G. 2013 Synchronization of rigid microrotors by time-dependent hydrodynamic interactions. *Phys. Rev. E* **88**, 023012.
- TILLEY, A.E., WALTERS, M.S., SHAYKHIEV, R. & CRYSTAL, R.G. 2015 Cilia dysfunction in lung disease. *Annu. Rev. Physiol.* **77** (1), 379–406.
- UCHIDA, N. & GOLESTANIAN, R. 2010 Synchronization and collective dynamics in a carpet of microfluidic rotors. *Phys. Rev. Lett.* **104**, 178103.
- VILFAN, A. & JÜLICHER, F. 2006 Hydrodynamic flow patterns and synchronization of beating cilia. *Phys. Rev. Lett.* **96**, 058102.
- WAN, K.Y. 2020 Synchrony and symmetry-breaking in active flagellar coordination. *Phil. Trans. R. Soc. B* **375** (1792), 20190393.
- WAN, K.Y. & GOLDSTEIN, R.E. 2018 Time irreversibility and criticality in the motility of a flagellate microorganism. *Phys. Rev. Lett.* **121**, 058103.
- WANG, S. & ARDEKANI, A.M. 2012 Unsteady swimming of small organisms. *J. Fluid Mech.* **702**, 286–297.
- WEI, D., DEHNAVI, P.G., AUBIN-TAM, M.-E. & TAM, D. 2019 Is the zero Reynolds number approximation valid for ciliary flows? *Phys. Rev. Lett.* **122** (12), 124502.
- YOSHIDA, M. & YOSHIDA, K. 2011 Sperm chemotaxis and regulation of flagellar movement by Ca^{2+} . *Mol. Hum. Reprod.* **17** (8), 457–465.