

PREHOSPITAL and DISASTER MEDICINE

The Official Journal of
The World Association for Disaster and Emergency Medicine (WADEM)
and the
Nordic Society of Disaster Medicine

Prehospital and Disaster Medicine is a peer-reviewed international medical journal devoted to the publication of Disaster and Humanitarian Medicine research and education. The principal mission of *Prehospital and Disaster Medicine* (PDM) is the distribution of information relevant to the practice of out-of-hospital and in-hospital emergency medical care, disaster medicine, and public health and safety. PDM provides an international forum for the reporting and discussion of scientific studies, both quantitative and qualitative, that have relevance to the above practices. Its major objectives are: (1) the improvement of the types and quality of the care delivered to patients with perceived medical emergencies and to victims of multi-casualty accidents or disasters, including the public health and safety aspects of such events; and (2) the prevention and/or mitigation of the occurrence of such events and of the effects of these events upon the human population and environment.

Subscription rates [US\$]:	One Year (4 Issues)
Individual (non-WADEM member)	\$95*‡
Institutional	\$250*

*Outside the USA add [US] \$6 for international shipping charges.

‡WADEM Affiliated Organization members receive 25% off individual subscription prices.

Affiliated Organizations include:

- Association de Medicine Liberaux Sapeur (AMELISAP)
- Japanese Medical Team for Disaster Relief
- Mediterranean Club for Burns and Fire Disasters
- Nordic Society for Disaster Medicine
- Pan-American Society for Disaster and Emergency Medicine
- Save Accident Victims Association of Nigeria (SAVAN)
- Society of Emergency Medicine-Singapore
- Swedish Society of Disaster Medicine

Please send inquiries to:

Editorial Office
Prehospital and Disaster Medicine
P O Box 55158
Madison, WI 53705-8958 USA

Telephone (01) (608) 263-2069
Facsimile (01) (608) 265-9290
E-mail: pdm@medicine.wisc.edu

**14th
World Congress
on Disaster
and Emergency
Medicine**

**Edinburgh, Scotland
May 2005**

Complete information available from:
Marvin L. Birnbaum, PhD, MD
Clinical Science Center
600 N. Highland (E5/615)
Madison, WI 53792, USA
Telephone/FAX (01) (608) 263-9641
<http://www.pdm.medicine.wisc.edu>
E-mail: mlb@medicine.wisc.edu

THE
WORLD
ASSOCIATION
OF
DISASTER
AND
EMERGENCY
MEDICINE

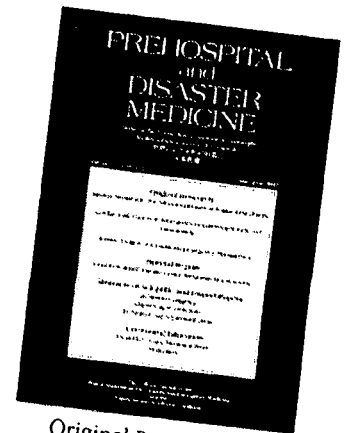


**PREHOSPITAL AND
DISASTER MEDICINE (PDM)**

The Official Journal of the World Association
for Disaster and Emergency Medicine
and the Nordic Society of Disaster Medicine

PDM is the only internationally-
focused, peer-reviewed journal that
provides information about meeting
the unforeseen challenges
encountered in Prehospital Care and
Disaster management. Each issue
contains scientific papers written by
leading professionals and educators
from around the world.

WADEM membership includes a
subscription to PDM.



Original Research
Special reports
Comprehensive reviews
Case reports
Calendar of International Congresses

The World Association for Disaster and Emergency Medicine (WADEM) shares the common goal of improving and standardizing the quality of prehospital and emergency care that is available to citizens of all nations. WADEM is dedicated to the ideals of Learning and Practice through a commitment to publishing the journal, Prehospital and Disaster Medicine. WADEM also recognizes the organizations that have shown commitment and dedication in the fields of public education, continuing medical education, scientific research, and analyses of medical field practices.

**14th WORLD CONGRESS
ON
DISASTER AND EMERGENCY MEDICINE
Edinburgh, Scotland
16 - 20 May 2005**



World Association for
Disaster and Emer-
gency Medicine



500
years

INNOVATION &
EXCELLENCE *in*
SURGERY

1505 - 2005



**Call for
ABSTRACTS**

1st Announcement
www.wcdem2005.org

Hosted by
Faculty of Prehospital Care of the
Royal College of Surgeons of Edinburgh

1st Announcement
The World Association for Disaster
and Emergency Medicine
is Seeking Nominations for
**The Peter Safar Award
for Services to
Disaster Reanimatology**



This award is presented to honor one of the founding members of the World Association for Disaster and Emergency Medicine (WADEM) and the first editor of *Prehospital and Disaster Medicine*. Professor Peter Safar has devoted his entire professional life to the science and teaching of reanimatology. This award will be given at the 14th World Congress on Disaster and Emergency Medicine in Edingurgh, Scotland in May of 2005 to a worthy practitioner in Disaster Medicine, who, in the opinion of the Board of Directors of the WADEM has made outstanding contributions to this field.

For further information, contact: Knut Ole Sundnes, MD, President, WADEM
at: knut.sundnes@sanr.mil.no

The Michael Moles Memorial Fellowship

To honor the life of Dr. T. Michael Moles, the World Association for Disaster and Emergency Medicine (WADEM) has established a fund to award a two year free membership in WADEM to enthusiastic people with an interest in pursuing a career in Disaster and Emergency Medicine. This fund is directed at those who otherwise cannot afford to become members. Membership includes a two year subscription to Prehospital and Disaster Medicine, the WADEM Newsletter (Insights), access and networking with leaders in the field, and discounts at regional and world Congresses.

Application Process

There are simple guidelines for those who wish to apply for an award.

We require submission of:

- ◆ A copy of a current Curriculum Vitae
- ◆ A personal statement (not exceeding two sides of A4) as to why you deserve this Fellowship and what benefits you expect to gain from it, as well as stating how you will continue your involvement in the WADEM
- ◆ The name of one reference

Candidates selected must submit an annual report of his/her WADEM-related activities to the WADEM Board of Directors and will submit a scientific paper or poster for presentation and discussion at the WADEM World Congress.

All applications will be reviewed by a Committee consisting of:

The President of WADEM
The Immediate Past-President
The Treasurer

Successful candidates will be announced at the 14th World Congress to be convened in Edinburgh, Scotland, 16-20 May 2005.

Wherever possible, applications should be made electronically to
pdm@medicine.wisc.edu

Or, if this is not possible, please send your application to the WADEM International
Office
by mail or fax

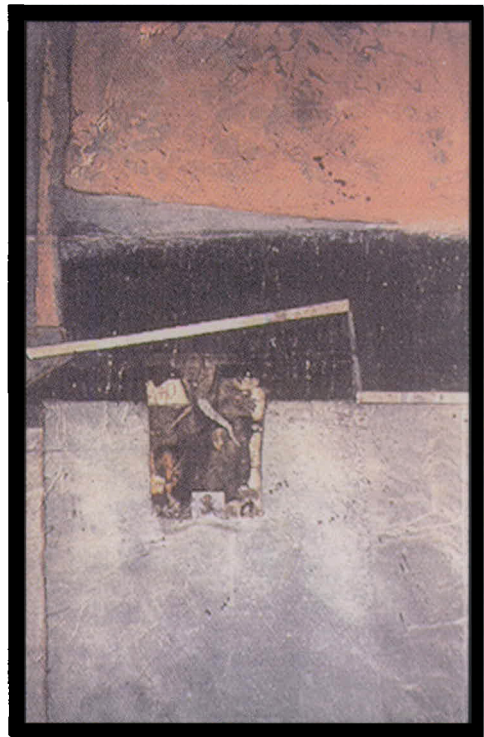
World Association for Disaster and Emergency Medicine (WADEM)
PO Box 55158
Madison, WI 53701-8958 USA
fax (+1) (608) 263-9641

All applications received will be acknowledged

The Task Force on Quality Control of Disaster Management,
The World Association for Disaster and Emergency Medicine,
and the Nordic Society for Disaster Medicine now present:

Health Disaster Management Guidelines for Evaluation and Research in the Utstein Style

Editors: Knut Ole Sudnes, MD
Professor Marvin Birnbaum, MD, PhD



Available for \$49.95, or free with a subscription to *Prehospital and Disaster Medicine*, this important work provides a conceptual framework for reporting disaster responses and evaluation, and includes a comprehensive glossary of terms.

For ordering or subscription information, call 01 608-263-2069, email a request to pdm@medicine.wisc.edu, or fax a subscription insert found in each issue of the journal to 01 608-265-3037.

All royalties go to the support of the development of evaluation and research for
Disaster Medicine

Bringing Simulation to Life



SimMan®

There is a growing awareness that health care is behind other high risk operations in its attention to ensuring basic safety and that there is a need to grasp the scale of the problem ^(1,2).

Use of patient simulation is considered an important part of the solution as many scenarios can be presented including uncommon but critical situations where a rapid response is needed. Errors can be allowed to occur and reach their conclusion without any risk to a patient. Team member interactions and leadership can also be explored and developed.

Two manikin-based simulators from Laerdal, SimMan® and AirMan®, represent a new generation of affordable and portable solutions to meet these needs.

References:

- 1) BMJ Volume 320, 18 March 2000
- 2) To Err Is Human: Building a Safer Health System/Linda T. Kohn, Janet M. Corrigan, and Molla S. Donaldson, Editors, © 2000 by the National Academy of Sciences.

For more information visit www.laerdal.com/simman

LAERDAL MEDICAL AS, P.O. Box 377, N-4002 Stavanger, Norway
Tel. 47-51 51 17 00, Fax 47-51 52 35 57, E-mail laerdal.norway@laerdal.no



Laerdal

helping save lives

SWEDE

Decontamination

The Total Solution

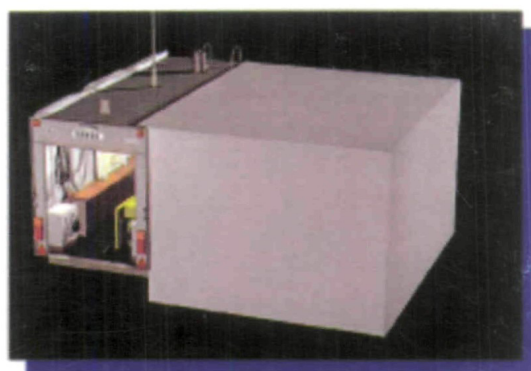
Incl. Local distribution, training, maintenance, education, etc.



Normeca^A

SUPPLIER OF MOBILE HOSPITALS

Number One in the world



For more information, contact:



Normeca^A

E-mail: mobile-hospital@normeca.com

P.O. BOX 404, 1471 LOERENSKOG
NORWAY

PHONE: +47 67 92 76 00, FAX: +47 67 97 17 66