

Access
leading
journals in
your subject

Cambridge Core

Explore today at [cambridge.org/core](https://www.cambridge.org/core)

Cambridge Core



CAMBRIDGE
UNIVERSITY PRESS

CONTENTS

Breeding and genetics

<i>König, S. and May, K.</i> Invited review: Phenotyping strategies and quantitative-genetic background of resistance, tolerance and resilience associated traits in dairy cattle	897
<i>Costa, A., Lopez-Villalobos, N., Visentin, G., De Marchi, M., Cassandro, M. and Penasa, M.</i> Heritability and repeatability of milk lactose and its relationships with traditional milk traits, somatic cell score and freezing point in Holstein cows	909
<i>Juengel, J. L., Hickey, S. M., Clarke, S. M., Cullen, N. G., McEwan, J. C. and Dodds, K. G.</i> Heritability of ram mating success in multi-sire breeding situations	917
<i>Davoli, R., Catillo, G., Serra, A., Zappaterra, M., Zambonelli, P., Meo Zilio, D., Steri, R., Mele, M., Buttazzoni, L. and Russo, V.</i> Genetic parameters of backfat fatty acids and carcass traits in Large White pigs	924

Nutrition

<i>Torno, C., Staats, S., de Pascual-Teresa, S., Rimbach, G. and Schulz, C.</i> Effects of resveratrol and genistein on growth, nutrient utilization and fatty acid composition of rainbow trout	933
<i>Jansman, A. J. M., Cirot, O., Corrent, E., Lambert, W., Ensink, J. and van Diepen, J. Th. M.</i> Interaction and imbalance between indispensable amino acids in young piglets	941
<i>Ruiz-Ascacibar, I., Stoll, P., Bee, G., and Schlegel, P.</i> Dynamics of the mineral composition and deposition rates in the empty body of entire males, castrates and female pigs	950
<i>Beiranvand, H., Khani, M., Ahmadi, F., Omid-Mirzaei, H., Ariana, M. and Bayat, A. R.</i> Does adding water to a dry starter diet improve calf performance during winter?	959
<i>Mousavi, F., Karimi-Dehkordi, S., Kargar, S. and Ghaffari, M. H.</i> Effect of chromium supplementation on growth performance, meal pattern, metabolic and antioxidant status and insulin sensitivity of summer-exposed weaned dairy calves	968
<i>Wang, M., Wang, R., Liu, M., Beauchemin, K. A., Sun, X. Z., Tang, S. X., Jiao, J. Z., Tan, Z. L. and He, Z. X.</i> Dietary starch and rhuarbar supplement increase ruminal dissolved hydrogen without altering rumen fermentation and methane emissions in goats	975

Physiology and Functional Biology

<i>Lu, L., Zhao, L. L., Dong, S. Y., Liao, X. D., Dong, X. Y., Zhang, L. Y. and Luo, X. G.</i> Dietary supplementation of organic or inorganic chromium modulates the immune responses of broilers vaccinated with Avian Influenza virus vaccine	983
<i>Xue, Y. F., Guo, C. Z., Hu, F., Sun, D. M., Liu, J. H. and Mao, S. Y.</i> Molecular mechanisms of lipid metabolism disorder in livers of ewes with pregnancy toxemia	992
<i>Yasui, T., Ehrhardt, R. M., Bowman, G. R., Vázquez-Añón, M., Richards, J. D., Atwell, C. A. and Overton, T. R.</i> Effects of trace mineral amount and source on aspects of oxidative metabolism and responses to intramammary lipopolysaccharide challenge in midlactation dairy cows	1000
<i>Nascimento, M., Nascimento, A. C. C., Dekkers, J. C. M. and Serão, N. V. L.</i> Using quantile regression methodology to evaluate changes in the shape of growth curves in pigs selected for increased feed efficiency based on residual feed intake	1009
<i>Abeni, F., Petreña, F. and Le Cozler, Y.</i> Effects of feeding treatment on growth rates, metabolic profiles and age at puberty, and their relationships in dairy heifers	1020

Welfare, Behaviour and Health Management

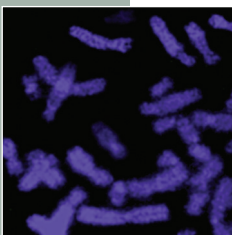
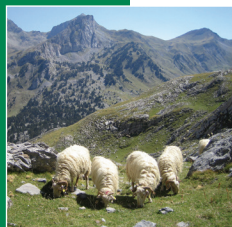
<i>Brünger, J., Dippel, S., Koch, R. and Veit, C.</i> 'Tailception': using neural networks for assessing tail lesions on pictures of pig carcasses	1030
<i>Larsen, M. L. V., Andersen, H. M.-L. and Pedersen, L. J.</i> Changes in activity and object manipulation before tail damage in finisher pigs as an early detector of tail biting	1037
<i>Yun, J., Han, T., Björkman, S., Nystén, M., Hasan, S., Valros, A., Oliviero, C., Kim, Y. and Peltoniemi, O.</i> Factors affecting piglet mortality during the first 24 h after the onset of parturition in large litters: effects of farrowing housing on behaviour of <i>postpartum</i> sows	1045
<i>Zhang, Y. and Phillips, C. J. C.</i> Climatic influences on the mortality of sheep during long-distance sea transport	1054

Livestock Farming Systems

<i>Veysset, P., Lherm, M., Boussemar, J. P. and Natier, P.</i> Generation and distribution of productivity gains in beef cattle farming: Who are the winners and losers between 1980 and 2015?	1063
<i>Kok, A., Lehmann, J. O., Kemp, B., Hogeveen, H., van Middelaar, C. E., de Boer, I. J. M. and van Knegsel, A. T. M.</i> Production, partial cash flows and greenhouse gas emissions of simulated dairy herds with extended lactations	1074
<i>Orjales, I., Lopez-Alonso, M., Miranda, M., Alaiz-Moretón, H., Resch, C. and López, S.</i> Dairy cow nutrition in organic farming systems. Comparison with the conventional system	1084

Quality of Animal Products

<i>Belloir, P., Lessire, M., Lambert, W., Corrent, E., Berri, C. and Tesseraud, S.</i> Changes in body composition and meat quality in response to dietary amino acid provision in finishing broilers	1094
<i>Tomažin, U., Batorek-Lukač, N., Škrlep, M., Prevolnik-Povše, M. and Čandek-Potokar, M.</i> Meat and fat quality of Krškopolje pigs reared in conventional and organic production systems	1103
<i>Cividini, A., Simčič, M., Štiblj, V., Vidrih, M. and Potočnik, K.</i> Changes in fatty acid profile of Bovec sheep milk due to different pasture altitude	1111



Cambridge Core

For further information about this journal
please go to the journal web site at:
cambridge.org/animal



MIX
Paper from
responsible sources
FSC® C007785

CAMBRIDGE
UNIVERSITY PRESS