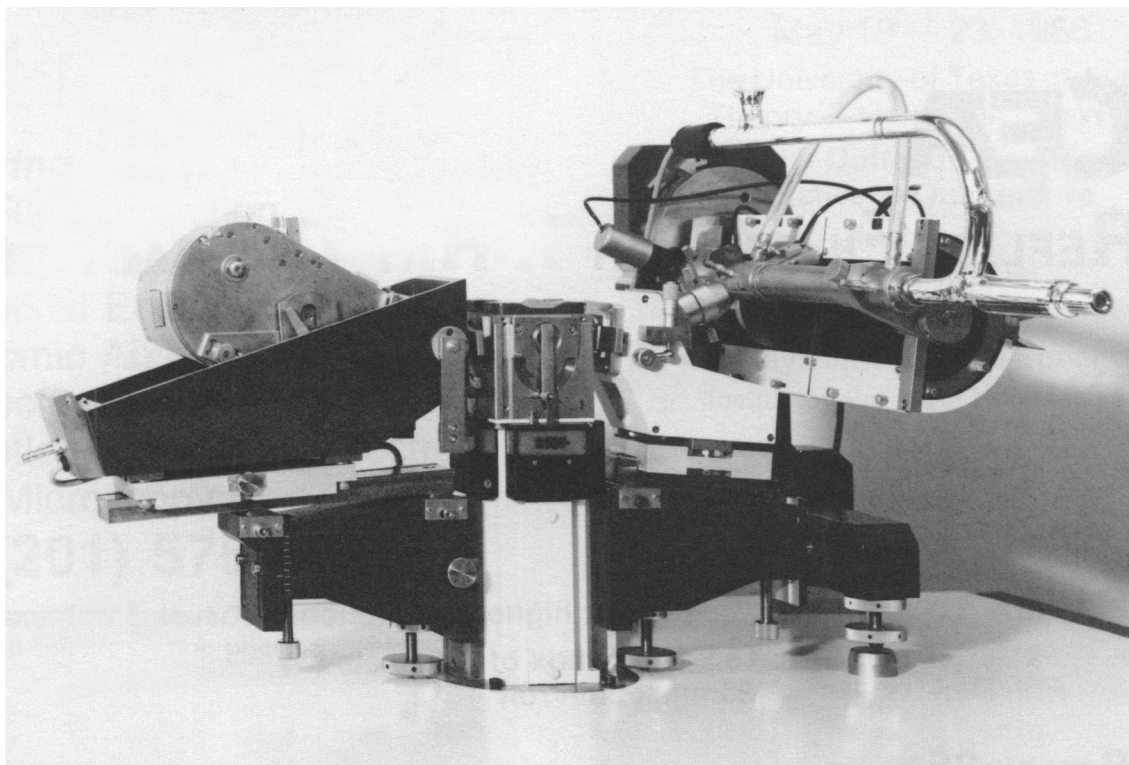


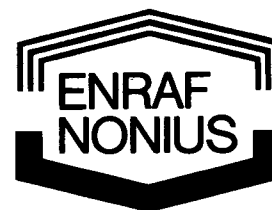
# ENRAF-NONIUS X-RAY DIFFRACTION



*Pictured above: On the left is a triple sample Guinier powder camera, on the right a temperature programmable Guinier camera, shown mounted on a sealed tube X-ray generator.*

FOR YOUR DIFFRACTION APPLICATIONS, OUR EQUIPMENT LINE INCLUDES:

- X-Ray Generators: Conventional Sealed Tube and Rotating Anode Types
- Ambient Temperature, Temperature Programmable Analytic Guinier Cameras
- CAD-4 Single Crystal Diffractometer, FAST Area Detector
- Specialty Cameras
- EXAFS Systems
- Much More



---

For Information Please Contact **ENRAF-NONIUS** Or Your Local **ENRAF-NONIUS** Agent

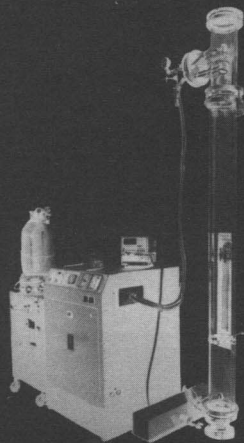
**ENRAF-NONIUS**  
P.O. Box 483  
2600 AL Delft, Holland  
Telephone 015-569230  
Telex 84438083

**ENRAF-NONIUS**  
390 Central Avenue  
Bohemia, NY 11716  
Telephone (516) 589-2885  
Telex 960250

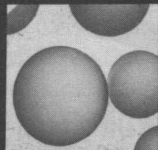
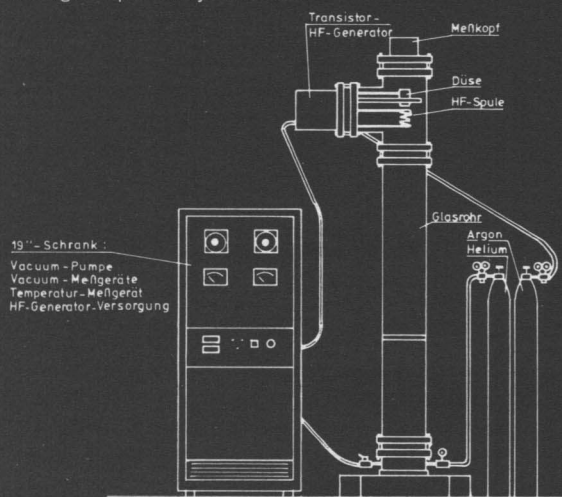
Delft      New York      Solingen      Paris      London      Copenhagen

PD23

# Laboratory Atomizing System



- for producing rapid solidified metal powder having a grain diameter from 90 up to 1500  $\mu\text{m}$
- selective amorphous, partial crystalline and crystalline solidification
- atomization with gas pressure
- evacuation and protective gas flushing of the atomizing tube
- inductive melting 1,2 / 2 / 3,3 / 6,6 kW
- levitation melting
- no freezing of the jet
- also suitable for high melting temperatures
- production of basic materials for sinter materials, semi-finished parts as well as soldering- and connecting technics, coating-, jet- and metallurgical technics from gold through super alloys to steel



amorphous



partial crystalline

shots of Pd<sub>77.5</sub>Si<sub>16.5</sub>Cu<sub>6</sub>  
with scanning electron microscope

**linn**  
elektronik

Heinrich-Hertz-Platz 1, Eschenfelden  
D-8459 Hirschbach 1, West-Germany  
Telefon (0 96 65) 17 21-3, Telex 63 902

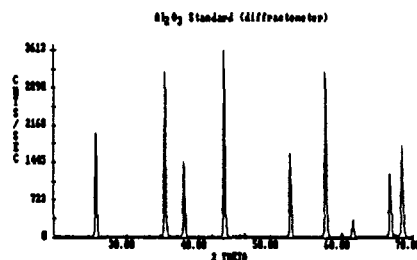
Specialists for Heat treatment, Laboratory- and High temperature furnaces, HF-generators and systems

## Materials Data, Inc. Has Software for Your IBM-PC!

**Micro-Peak** Data reduction including smoothing, background subtraction, peak finding, graphical compare and more.

**Micro-Powd** Latest and best pattern simulation program. Over 20 years in development. Now on your IBM PC.

**Micro-ID** Fast, effective Search/Match. Use JCPDS Subfiles or your own patterns.

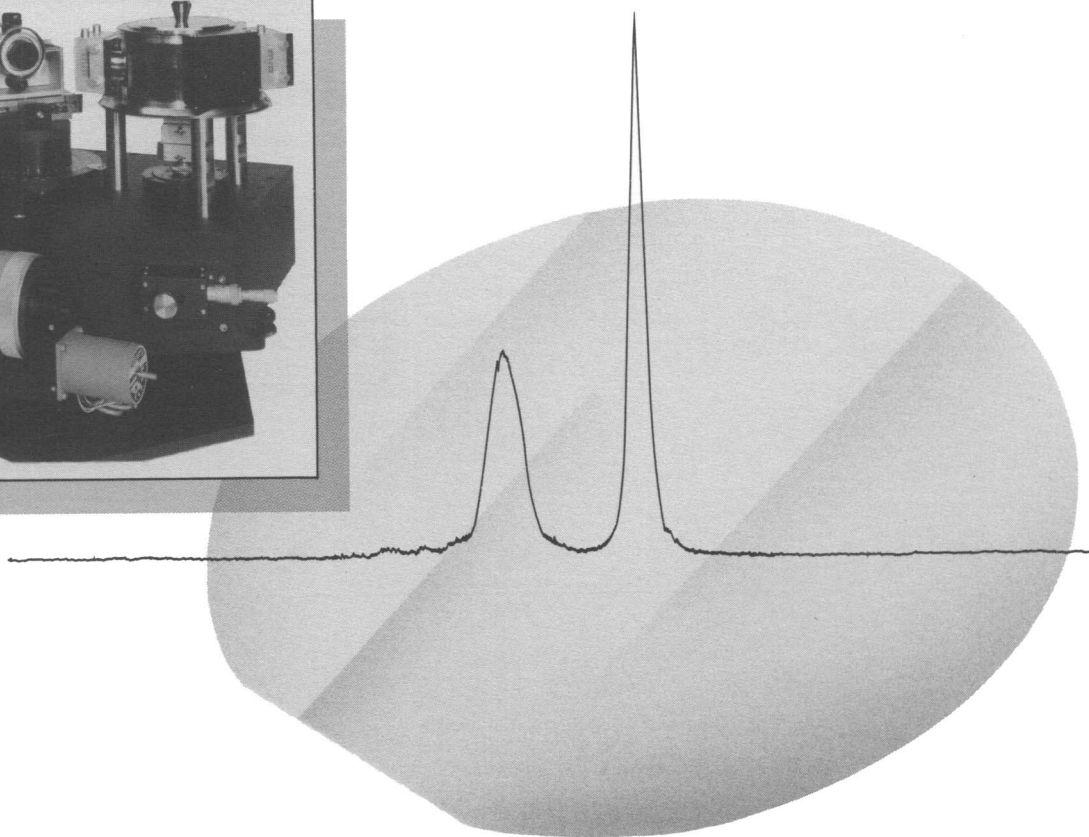
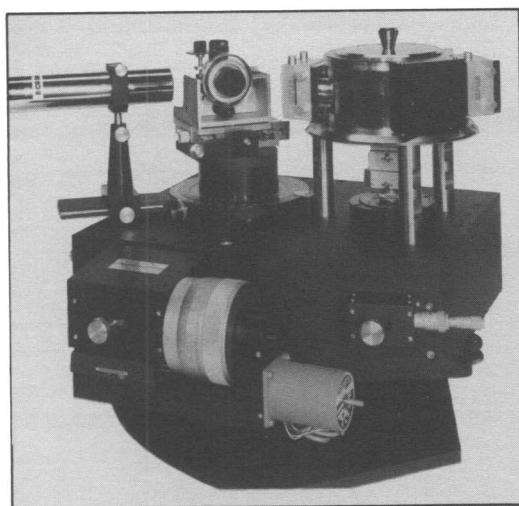


Materials Data, Inc. - P.O. Box 791 - Livermore, CA 94550  
(415) 449-1084

PD25

# COMPONENTS AND SYSTEMS FOR SEMICONDUCTOR AND MATERIALS CHARACTERIZATION...

## BLAKE INDUSTRIES



Blake Industries is the leading manufacturer of x-ray components and systems that meet the requirements of modern materials and semiconductor technology.

We develop—and constantly evolve—instrumentation sensitive to new materials and to the demands imposed by smaller and smaller semiconductor circuits. Our product designs reflect today's major emphasis on detecting material defects, as well as the need for analyzing epitaxial films by measuring lattice mismatch between the epitaxy and the film. And our instrumentation is known as the

most flexible in handling a wide range of materials with all the necessary radiation safety.

Other leading companies, such as IBM, Bell Labs, Westinghouse, TRW and AT&T, are putting Blake Industries' technology to work for them. Isn't it time yours did?

### **BLAKE INDUSTRIES, INC.**

660 Jerusalem Road  
Scotch Plains, NJ 07076  
(201) 233-7240  
Telex: 7109979581



PD26

# Powder Diffraction File 27-28

Now available in book form sets

**Inorganic Volume:**

2882 numeric diffraction patterns of inorganic phases, metals, alloys and minerals.

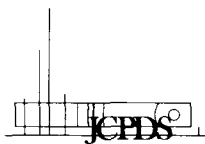
**Organic Volume:**

992 numeric diffraction patterns of organic and organometallic phases.

Crystallographic evaluation data made with program NBS\* EXAIDS83. Figure of merit for completeness and accuracy of interplanar spacings is assigned to each indexed pattern.

For further information write or call:

JCPDS  
International Centre for Diffraction Data  
1601 Park Lane, Swarthmore, PA 19081  
USA (215) 328-9400



PD27

**•2-D/1-D •1-D •DNA & IMAGE ANALYSIS**  
**ZEINEH SOFT LASER SCANNING DENSITOMETERS**  
 FOR SCANNING: X-RAY DIFFRACTION, EMISSION PLATES, TWO DIMENSIONAL & I-D SLAB GELS, TLC PLATES, TUBES & BLOTS ON NITRO CELLULOSE.

**X-RAY DIFFRACTION**

**DENSITOMETRIC TRACING**  
 (Various computer programs for analysis)

**2-D**

**1-D** **MOLECULAR WEIGHT**

| PEAK # | POS. | MOL. WT. |
|--------|------|----------|
| 1      | .07  | 61.07    |
| 2      | .23  | 77.64    |
| 3      | .28  | 85.08    |
| 4      | .37  | 97.55    |
| 5      | .44  | 107.84   |

**Automatic DNA-SEQUENCING**

```

S11111111
S11111111
S11111111
S11111111
S11111111
S11111111
S11111111
S11111111
S11111111
S11111111
  
```

**SUPERIMPOSITION**  
 Graph & Quantitation Difference

**Quantitate**

| Peak (X, Y)   | Size  | Base Area | XSize | Amount |
|---------------|-------|-----------|-------|--------|
| 01 (115, 29)  | 39141 | 478       | 14.3  | 1.2298 |
| 02 (140, 46)  | 33828 | 774       | 12.4  | 1.0664 |
| 03 (4, 50)    | 5890  | 146       | 2.2   | .1992  |
| 04 (96, 81)   | 5157  | 124       | 1.9   | .1654  |
| 07 (163, 100) | 35202 | 358       | 12.9  | 1.1094 |
| 06 (228, 100) | 7875  | 195       | 2.9   | .2494  |
| 08 (36, 106)  | 17103 | 243       | 6.2   | .5332  |
| 09 (134, 111) |       |           |       |        |

**FROM THIS** **YOU GET THIS**

| Position | area  | height | % area |        |
|----------|-------|--------|--------|--------|
| 11       | 281   | 14652  | 100    | 24.353 |
| 21       | 781   | 2873   | 64.098 | 4.779  |
| 31       | 179   | 1564   | 15.048 | 2.6    |
| 41       | 1.289 | 2005   | 38.695 | 3.332  |
| 51       | 1.311 | 6959   | 96.32  | 11.323 |
| 61       | 1.456 | 329    | 85.673 | 3.518  |
| 71       | 2.052 | 2174   | 65.386 | 2.612  |

Prices: 2-D: \$12,995 & up 1-D: \$1,895 & up **REPRESENTATIVES NEEDED.**

**1-D Complete System (Laser scanner, computer, disk drive, monitor, printer) \$6,990**

Call Collect: **Dr. Zeineh (714) 870-0290, telex 692430**

**BIOMED INSTRUMENTS INC.**  
 1020 South Raymond Avenue, #B, Fullerton, California 92631, U.S.A. Tlx 692430

PD28

## Let Powder Diffraction Deliver a Target Market to You

Our international readership spends in excess of \$100,000,000 for X-ray instrumentation, and contracts for more than \$30,000,000 worth of after sales and services each year.

Capture your share of this thriving market by reserving space in our upcoming issues.

Call (215) 328-9405 or Write:

Publisher's Office  
 JCPDS—International Centre for Diffraction Data  
 1601 Park Lane  
 Swarthmore, PA 19081  
 U.S.A.

# INTRODUCING

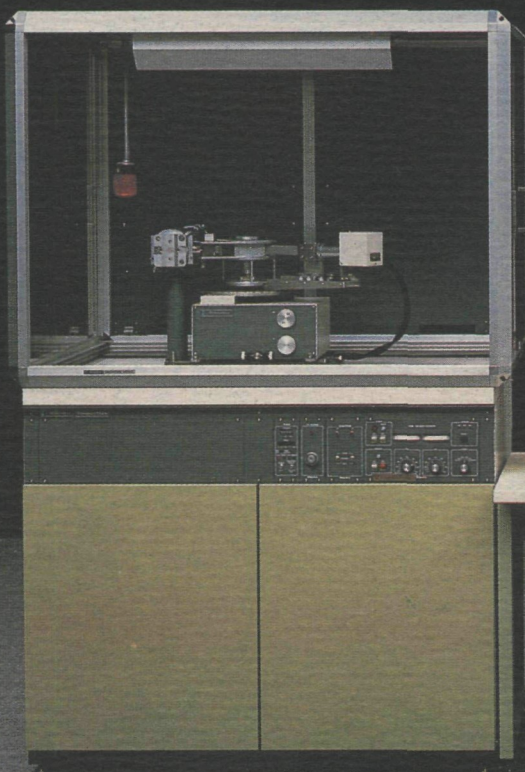
## *Rigaku's D/Max-B Series*

... the most complete, self-contained x-ray diffraction system available and at a remarkably low price!

Rigaku's new D/Max-B Series utilizes a self-contained, high speed, high capacity micro computer providing all the capabilities of a modern x-ray diffractometer system:

- Simultaneous operation of two instruments
- Automatic detector parameter selection
- Computer aided alignment
- Self diagnostics
- Full color graphics
- Data processing programs including software for search/match, quantitative & qualitative analysis, texture, residual stress determination, particle size, lattice parameter & indexing, deconvolution, microdiffraction and small angle scattering.

Amazing... all of these features available in one single unit... and the price... remarkably affordable! For more descriptive literature or a demonstration, call or write Rigaku/USA today!



Rigaku/USA, Inc.  
3 Electronics Ave.  
Danvers, MA 01923 U.S.A.  
Phone: (617) 777-2446



# PUTTING POWER INTO POWDER ANALYSIS

Philips automated XRD systems have the power to make your powder analyses quicker, easier and much more reliable. Unlike conventional wet chemical methods, which often rely on sample solubility (and not all samples are soluble!), XRD analysis is non-destructive. So you can be sure of more reliable, detailed results. And your sample remains intact for other complementary analyses. Furthermore, sample preparation is very fast. Airborne dust, for example, can be collected on inexpensive paper filters, ready for immediate analysis. Data collection is also fast, taking minutes rather than hours. All of which adds up to quicker results... and significant cost savings.



When it comes to data processing, our comprehensive software range is more than a match for any application. Qualitative analytical software rapidly and accurately identifies major and minor constituents. And quantitative analyses are accurate down to trace levels – even with very small samples. Other software modules include line profile and crystallographic analyses. In all cases, report generation is automatic, which cuts out one more tedious, time-consuming task for you. And that's another example of the power of Philips XRD. For more information, contact your local Philips organization... you'll find it's well worth the effort!

**FOR QUICKER, EASIER,  
MORE RELIABLE RESULTS:  
PHILIPS AUTOMATED XRD SYSTEMS.**

*Philips Scientific & Analytical Equipment, Lelyweg 1  
7802 EA Almelo, The Netherlands. Tel.: (05490) 18291, Telex: 36591*

*(In U.S.A.) Philips Electronic Instruments, Inc., Analytical X-ray Group,  
85 McKee Drive, Mahwah, NJ 07430. Tel.: (201) 529-3800*



**Scientific &  
Analytical Equipment**

**PHILIPS**