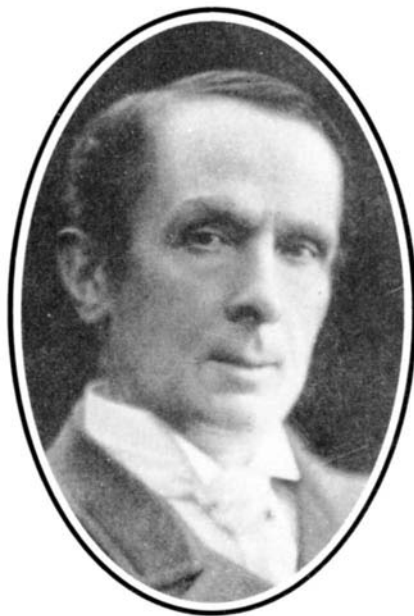


July
1991

The Journal of Laryngology and Otology



Founded in 1887 by Morell Mackenzie & Norris Wolfenden

Edited by JOHN B. BOOTH

Assistant Editors NEIL WEIR, PATRICK BEASLEY, CAROL WENGRAF, RICHARD RAMSDEN,
IOLO GRIFFITH & PETER RHŶS EVANS

Advisor in Pathology IMRICH FRIEDMANN

Advisor in Audiology LINDA LUXON

Advisors in Radiology GLYN LLOYD & PETER PHELPS

Advisor in Statistics STEPHEN EVANS

Vol 105
No 7

The Journal of Laryngology and Otology

(Founded in 1887 by MORELL MACKENZIE and NORRIS WOLFENDEN)

Edited by JOHN B. BOOTH

Assistant Editors NEIL WEIR, PATRICK BEASLEY, CAROL WENGRAF, RICHARD RAMSDEN,
IOLO GRIFFITH & PETER RHYS EVANS

Editorial Assistant CAROLINE BARRETT

INSTRUCTIONS FOR AUTHORS

1. Original articles which have not been published elsewhere are invited and should be sent to the Editor. They are considered for publication on the understanding that they are contributed to this *Journal* solely. Reproduction elsewhere, in whole or in part, is not permitted without the previous written consent of the Author and Editor and the customary acknowledgement must be made. Normally an original main article should not exceed 7500 words.

Longer articles or these will be considered for publication as *Supplements*, at the expense of the authors or their employing authorities.

2. Manuscripts should be **typewritten in duplicate** on one side of the paper only (A4 297×210 mm) and double spaced, with wide margins. Computer print-outs are not favoured.

Begin each component on a new page in the following sequence: title page, abstract, text, acknowledgements, references, tables and legends.

(a) **Abstract**—This should contain not more than 150 words and include a statement of the problem, the method of study, results and conclusions; a 'summary' section should **not** be included in the main manuscript.

(b) **Key Words**—only those appearing as Medical Subject Headings (MeSH) in the supplement to the Index Medicus may be used; where no appropriate word(s) are listed those dictated by common sense/usage should be supplied.

(c) **Text**—Suggested outline—(1) introduction, (2) materials and methods, (3) results, (4) discussion, (5) conclusion.

(d) **Tables** are adjuncts to the text and should not repeat material already presented.

(e) **Illustrations**—Two sets of illustrations, one with each copy of the manuscript, must be submitted and all authors should remember that the single column width is 80mm. One set of illustrations should, therefore, not exceed this width and they should ensure that the essential features are illustrated within this dimension.

Coloured illustrations will be charged to authors, unless a special grant is authorized by the Editor.

Written permission from the publisher must be provided to the *Journal* in order to republish material with copyright elsewhere and also from the senior author where necessary.

(f) **Measurements** must be in metric units, with *Système Internationale* (SI) equivalents given in parentheses.

(g) **References**—For *Journal* articles, The Harvard system of recording references should be used, e.g. Green, C. and Brown, D. (1951). The tonsil problem. *Journal of Laryngology and Otology* 65: 33–38. A paper written by more than two authors should be abbreviated in the text, e.g. Green *et al.* (1951), but *all* the authors should be given in the list of references. The titles of all *Journals* should be given without abbreviation. **References should be listed in alphabetical order**; use of the Vancouver system will **not** be accepted.

For single-author books, the following style should be used: Green, C. (1951). *The tonsil problem*, 2nd edn., vol. 1, Headley Brothers Ltd., Ashford, Kent, p 33–38.

For papers in multi-author books with one or more editors, the reference should include the title of the chapter and the names of the editors, together with the number of the edition as eg: Brown, D. (1951) Examination of the ear. In *Diseases of the Ear, Nose and Throat*. 2nd Edition. (White, A., Black, B., eds.), Headley Brothers Ltd, Ashford, Kent, p 33–38.

It is most important that authors should verify personally the accuracy of every reference before submitting a paper for publication. The names of authors cited in the References should be given in alphabetical order.

(h) **Meetings**—If the manuscript was presented at a meeting, the place where it was held, and the date on which it was read must be included and should appear at the foot of the title page.

(i) **Financial disclosures**—In the submission letter to the Editor, the authors must list all affiliations with or financial involvement in, organizations or entities with a direct financial interest in the subject matter or material of the research discussed in the manuscript.

(j) **Rejections**—All manuscripts which are rejected will no longer be returned to the authors. Those submitting papers should, therefore, ensure that they retain at least one copy and the reference numbers, if any, of the illustrations. The only exception to this will be those manuscripts with colour illustrations which will be returned *automatically* by Surface Mail.

(k) **Facsimile (FAX)**. All authors should send a Facsimile number whenever possible to speed communication; this particularly applies to those outside the United Kingdom. Manuscripts with no visual illustrations (X-rays/pathology) may be sent by facsimile.

3. Page proofs are sent to authors for corrections, which should be kept to a minimum; they must be clearly marked, and no extra matter added. Proofs should be returned within 5 days.

4. Orders for reprints must be sent when returning page proofs, and for this purpose special forms are supplied.

5. Editorial communications may be addressed to **The Editor, Journal of Laryngology and Otology, c/o Headley Brothers Ltd., The Invicta Press, Ashford, Kent TN24 8HH or sent by FAX (071-224 1645).**

6. **The annual subscription is £80.00 Institutions & Libraries US\$200.00; £75.00 Individuals US\$187.50; £45.00 Registrars, Residents and Interns.** (Those in training should submit a certificate from The Head of the Department giving details of their appointment; those who qualify must supply their *home* address for mailing direct). Claims to be made for missing issues within 6 months of each publication date.

7. Single copies of current or back numbers (when available) will be on sale at £11.00 each (including postage).

8. **BINDERS** to hold *Journals* for one year, available at £12.00 each.

9. **SUPPLEMENTS** published at 'irregular' intervals with subscription, available separately on request.

10. All subscriptions, advertising and business communications should be sent to the publishers, or subscription agents.

HEADLEY BROTHERS LTD,

THE INVICTA PRESS, ASHFORD, KENT.

© *Journal of Laryngology and Otology Ltd.*, 1991

ISSN 0022-2151

Second class postage paid Rahway, N.J.

Postmaster: Send address corrections to The Journal of Laryngology and Otology, c/o Mercury

Airfreight International Ltd. Inc., 2323 Randolph Avenue, Avenel, N.J. 07001. Frequency of Publication: Monthly.

SUBSCRIPTION APPLICATION

The Journal of
Laryngology
and Otology

SPECIAL SUBSCRIPTION RATES FOR NEW SUBSCRIBERS IS NOW ON OFFER:

Institutions and Libraries — £56.00 US\$140
Individuals — £50.00 US\$125
Registrars, Residents and Interns — £32.00

Offer is available until 31st August 1991 and applies to 1991 only

Normal annual subscription for 1991: (calendar year) £80.00 Institutions and libraries US\$200.00 £75.00 Individuals US\$187.50 £45.00 Registrars, Residents and Interns. Letters confirming status required with payment.

NAME _____ NEW SPECIAL RATE PAYMENT ENCLOSED†
 RENEWAL BILL ME
ADDRESS _____
POSTCODE (ZIP CODE) _____

† Cheques must be in pounds sterling, or US dollars drawn on a US bank, payable to Headley Brothers Ltd.

The Journal of Laryngology and Otology is published monthly by Headley Brothers Ltd., The Invicta Press, Queens Road, Ashford, Kent TN24 8HH, England.

SUBSCRIPTION APPLICATION

The Journal of
Laryngology
and Otology

SPECIAL SUBSCRIPTION RATES FOR NEW SUBSCRIBERS IS NOW ON OFFER:

Institutions and Libraries — £56.00 US\$140
Individuals — £50.00 US\$125
Registrars, Residents and Interns — £32.00

Offer is available until 31st August 1991 and applies to 1991 only

Normal annual subscription for 1991: (calendar year) £80.00 Institutions and libraries US\$200.00 £75.00 Individuals US\$187.50 £45.00 Registrars, Residents and Interns. Letters confirming status required with payment.

NAME _____ NEW SPECIAL RATE PAYMENT ENCLOSED†
 RENEWAL BILL ME
ADDRESS _____
POSTCODE (ZIP CODE) _____

† Cheques must be in pounds sterling, or US dollars drawn on a US bank, payable to Headley Brothers Ltd.

The Journal of Laryngology and Otology is published monthly by Headley Brothers Ltd., The Invicta Press, Queens Road, Ashford, Kent TN24 8HH, England.

SUBSCRIPTION APPLICATION

The Journal of
Laryngology
and Otology

SPECIAL SUBSCRIPTION RATES FOR NEW SUBSCRIBERS IS NOW ON OFFER:

Institutions and Libraries — £56.00 US\$140
Individuals — £50.00 US\$125
Registrars, Residents and Interns — £32.00

Offer is available until 31st August 1991 and applies to 1991 only

Normal annual subscription for 1991: (calendar year) £80.00 Institutions and libraries US\$200.00 £75.00 Individuals US\$187.50 £45.00 Registrars, Residents and Interns. Letters confirming status required with payment.

NAME _____ NEW SPECIAL RATE PAYMENT ENCLOSED†
 RENEWAL BILL ME
ADDRESS _____
POSTCODE (ZIP CODE) _____

† Cheques must be in pounds sterling, or US dollars drawn on a US bank, payable to Headley Brothers Ltd.

The Journal of Laryngology and Otology is published monthly by Headley Brothers Ltd., The Invicta Press, Queens Road, Ashford, Kent TN24 8HH, England.

AFFIX
STAMP
HERE

**The Journal of Laryngology and Otology
Headley Brothers Ltd
The Invicta Press
Queens Road
Ashford
Kent TN24 8HH
England**

AFFIX
STAMP
HERE

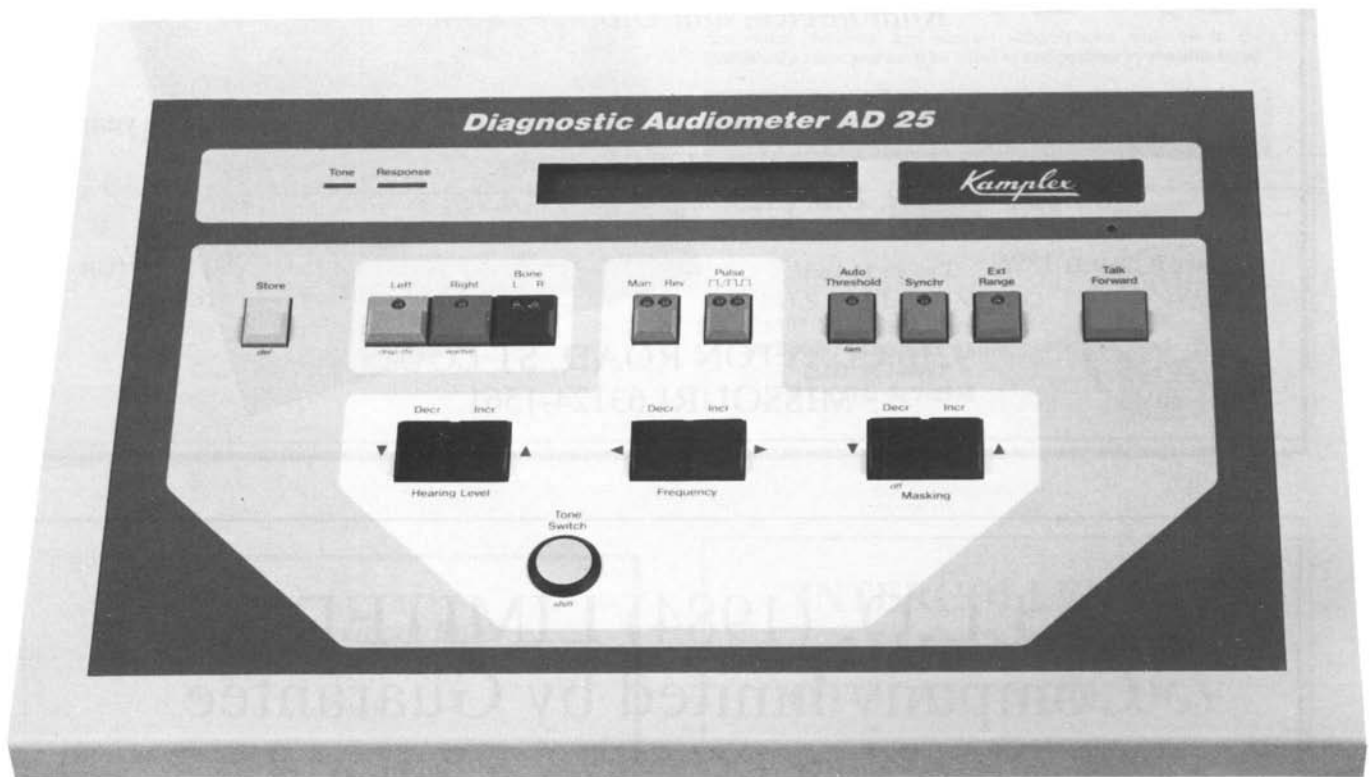
**The Journal of Laryngology and Otology
Headley Brothers Ltd
The Invicta Press
Queens Road
Ashford
Kent TN24 8HH
England**

AFFIX
STAMP
HERE

**The Journal of Laryngology and Otology
Headley Brothers Ltd
The Invicta Press
Queens Road
Ashford
Kent TN24 8HH
England**

The AD 25 DIAGNOSTIC AUDIOMETER

from *Kamplex*[®]



The latest addition to the Kamplex range incorporates many of the more popular features found on the best selling AD27 in a lightweight low cost package.

The attractive low profile design and easy-to-read back-lit display makes this a perfect desktop audiometer. Air Conduction, Bone Conduction and Narrow-band masking in 5dB steps are available together with an extremely useful talk-through facility.

Superbly engineered for reliability and portability (with the optional case), the AD25 also offers an automatic test facility.* A patient's audiometric results whether recorded manually or automatically may be stored and later recalled.

*Auto Threshold complies with ISO 8253, Audiometric Test Methods

- **Robust and Portable (with optional carrying case)**
- **AC/BC/Narrow-Band Masking**
- **Pure, Warble and Pulsed Tones**
- **Clear, easy to read Back-lit Display**
- **Automatic Test Facility (Conforms to ISO 8253)**
- **Results Storage and Recall Capability**
- **Insert Masking**

P.C.WERTH LTD

Audiology House, 45 Nightingale Lane, London SW12 8SP
Telephone: 081-675 5151 Fax: 081-675 7577

THE LARYNGOSCOPE

A Monthly Journal
devoted to the disease of
EAR, NOSE AND THROAT

*Official organ for the American Laryngological
Rhinological and Otological Society*

Price \$100.00 per year

Canada \$120.00 per year

Foreign \$120.00 per year

Institutional rate: U.S. \$125.00 per year, Foreign \$150.00 per year

ESTABLISHED 1896

GERSHON J. SPECTOR
EDITOR

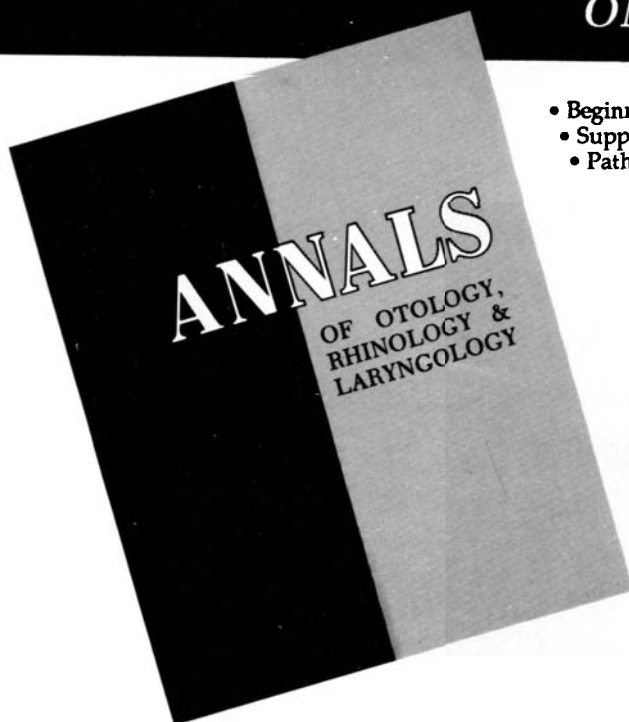
9216 CLAYTON ROAD, ST LOUIS,
MISSOURI 63124-1561

J.L.O. (1984) LIMITED Company limited by Guarantee Reg No: 1865175 England

In 1984, The Journal ceased to become a Limited Company with shareholders and instead became a registered charity under the Companies Act, limited by guarantee and without having a share capital. A Memorandum of Association was drawn up and the Association acquired the assets of the Journal of Laryngology and Otology Limited. Former shareholders were invited to become members of the Association and all those who undertook to do so, gave a Guarantee that should the association need to be wound up, they would contribute a sum not exceeding £20.

Annual General Meeting. This is normally held each year in early November, and it is to the Members of the Association that invitations are issued. Any individual paying a full subscription who would like to become a member of the Association is asked to write to the Editor, c/o Headley Brothers, confirming that he or she will make such a guarantee of £20 if the occasion were to arise. Applications for membership may be made at any time. It is hoped that more full subscribers will take up this offer and attend the Annual General Meeting so that there can be a more lively exchange of views between them, and the Editorial staff and publishers.

**QUALITY ARTICLES DESERVE QUALITY PUBLISHING—
ONLY THE BEST... SINCE 1892**



- Beginning our 100th year of publication • Monthly issues
- Supplements • Peer-reviewed • Imaging case studies
- Pathology consultations • Letters to the editor • Book reviews

1991 ANNUAL SUBSCRIPTION RATES

| | <u>Resident*</u> | <u>Individual*</u> | <u>Institutional</u> |
|---------|-------------------------------|--------------------------------|--------------------------------|
| US | <input type="checkbox"/> \$48 | <input type="checkbox"/> \$ 92 | <input type="checkbox"/> \$138 |
| Foreign | <input type="checkbox"/> \$60 | <input type="checkbox"/> \$112 | <input type="checkbox"/> \$158 |

*Individual, resident, and student subscriptions must be in the individual's name and must be billed to and paid for by the individual.

**NEW SUBSCRIBERS RECEIVE 2 ISSUES
FREE WITH PAID SUBSCRIPTION**



Mail to or call:
ANNALS PUBLISHING CO
4507 Laclede Avenue
St Louis, Missouri 63108
(314) 367-4987
FAX (314) 367-4988



*For Advertisement Rates
and Space in this
Journal*

apply to

The Advertisement Manager

**THE JOURNAL OF
LARYNGOLOGY AND
OTOLOGY**

Headley Brothers Limited
The Invicta Press
Ashford
Kent TN24 8HH
Tel: (0233) 623131

**INTERCOLLEGIATE
ASSESSMENT IN
OTOLARYNGOLOGY**

Royal College of Surgeons of
Edinburgh

Royal College of Surgeons of England

Royal College of Physicians and
Surgeons of Glasgow

Royal College of Surgeons in Ireland

The next Specialty Assessment in Otolaryngology will be held in the Royal College of Physicians and Surgeons of Glasgow on 7/8 November 1991.




Regulations and application forms are available from the Secretariat, Intercollegiate Specialty Boards, 10 Hill Square, Edinburgh EH8 9DR. Closing date for receipt of applications is Friday, 20 September 1991.

Fee: £250

For vertigo

due to Ménière's syndrome

At the recommended dosage of three 16mg tablets daily, Serc-16 is a highly effective first-line therapy for vertigo due to Ménière's syndrome.

-  Regression of symptoms — if therapy commences in the initial stages¹
-  Not associated with Parkinsonian side-effects — unlike prochlorperazine²
-  Non-sedative³

Serc[®]-16

betahistine 16mg

Tackles the symptoms by treating the cause

Presentation: A white, flat round tablet imprinted '267' on one face, 'DUPHAR' on the reverse, each tablet containing 16mg betahistine dihydrochloride. Available in packs of 84 tablets. Basic NHS price £18.03. **Indications:** Vertigo, tinnitus and hearing loss associated with Ménière's syndrome. **Dosage and Administration:** *Adults:* Initially one tablet three times daily, taken preferably with meals. *Maintenance dose:* 24-48mg daily. *Children:* No dosage recommendations are made for children. **Contra-indications, Warnings, etc.:** *Contra-indications:* Pheochromocytoma. *Precautions:* Clinical intolerance to Serc in bronchial asthma patients has not been shown, but caution should be exercised when administering this histamine analogue to bronchial asthma patients. Though an antagonism between Serc and antihistamines could be expected on the oral route, such

interactions have been reported. The usual precautions should be observed when administering Serc to patients in pregnancy. *Side-effects:* There has been a small number of reports of gastric upset. **Product Licence Number:** 0512/0088.

References: 1. Wilmot, T.J., *Clin. Otolaryngol.*, 1979; 4: 131-143. 2. Stephen, P.J. & Williamson, J., *Lancet*, 1984, ii: 1082-1083. 3. Data on file, Duphar Laboratories Limited.

Further information is available from:

duphar

Duphar Laboratories Limited, Gaters Hill, West End, Southampton SO3 3JD. Tel: (0703) 472281.