

This is a “preproof” accepted article for Weed Science. This version may be subject to change in the production process, *and does not include access to supplementary material*.

DOI: 10.1017/wsc.2024.91

Weed control efficiency of unmanned aerial vehicle (UAV) spray in replanting oil palm plantation areas

Kamalul Adham Che Ruzlan¹, Shahrul Azman bin Bakar², Che Ahmad Hafiz Che Manan³, Muhammad Khairul Anuar Mohd Noor⁴, Mohd Razman B. Abd Latif⁵, Cik Mohd Rizuan Zainal Abidin⁶, Mashitah Jusoh⁷ and Muhammad Saiful Ahmad Hamdani⁸

¹Senior Lecturer (ORCID 0000-0002-5110-1915), Faculty of Resource Science and Technology, Universiti Malaysia Sarawak, 94300, Kota Samarahan, Sarawak, Malaysia, ²Senior Researcher, Geoinformatics, FGV R&D Sdn. Bhd., FGV Innovation Center (Beneficial Microbes), 71760, Bandar Enstek, Negeri Sembilan; ³Lead Agronomist, Pests & Diseases Improvement, FGV AS Sdn. Bhd., FGV Innovation Center (Beneficial Microbes), 71760, Bandar Enstek, Negeri Sembilan; ⁴Researcher, Geoinformatics, FGV R&D Sdn. Bhd., FGV Innovation Center (Beneficial Microbes), 71760, Bandar Enstek, Negeri Sembilan; ⁵Researcher, Geoinformatics, FGV R&D Sdn. Bhd., FGV Innovation Center (Beneficial Microbes), 71760, Bandar Enstek, Negeri Sembilan; ⁶Head, Crop Protection & Biosolution, FGV R&D Sdn. Bhd., FGV Innovation Center (Beneficial Microbes), 71760, Bandar Enstek, Negeri Sembilan; ⁷Senior Lecturer, Department of Crop Science, Faculty of Agriculture, Universiti Putra Malaysia, 43400 UPM Serdang, Selangor; and ⁸Associate Professor (ORCID 0000-0002-6233-5143), Department of Crop Science, Faculty of Agriculture, Universiti Putra Malaysia, 43400 UPM Serdang, Selangor, Malaysia.

Author for correspondence: Kamalul Adham Che Ruzlan; Email: crkadham@animas.my, Muhammad Saiful Ahmad Hamdani; Email: s_ahmad@upm.edu.my

Abstract

Efficient chemical weed management considers precise application of herbicides, maximizing herbicide retention and absorption, reducing the impact of abiotic factors, and mitigating off-target movement in order to optimize herbicide efficacy. Hence, this study assessed the employability and cost-efficiency of an unmanned aerial vehicle (UAV) for pre-planting application and post-emergence selective grass weed control infesting legume cover crops (LCCs) in immature oil palm (*Elaeis quineensis* Jacq.) plantation. Field experiments were conducted in 2020 and 2021 at a research center and an oil palm replanting area in Jerantut, Pahang, Malaysia. Droplet deposition and distribution analyses revealed that the pressure at 0.25 MPa yielded better spraying coverage and increased droplet counts compared to 0.15 MPa. For pre-planting application, both UAV and mist blower resulted in total weed control. Meanwhile for selective grass control in the LCCs, conventional knapsack sprayer (CKS) application provided slightly better weed control than the UAV over the 12 weeks observation. However, cost-efficiency analysis revealed that UAV spraying yielded economically favorable for areas over 3,000 hectares, with potential savings ranging from 4% to 28%. Furthermore, UAV spraying demonstrated superior operational efficiency and reduced working hours by 37%, water consumption by 91%, and human labor expenses by 81% compared to both conventional methods. These findings underscore the potential of UAV-based spraying for large-scale weed control in oil palm plantations and highlight its efficiency, comparable effectiveness, and cost-saving benefits.

Keywords: Unmanned aerial vehicle, replanting area, pre-planting application, weed control in LCCs, oil palm, productivity.

Introduction

Weed control is economically critical during the oil palm (*Elaeis guineensis* Jacq.) replanting phase to ensure uninterrupted growth of both oil palm seedlings and cover crops (Goh et al. 2015). The current practice relies on conventional methods, particularly mechanical removal and chemical control using herbicides through various spraying techniques, including knapsack sprayers, mist-blowers, boom sprayers, and motorized power sprayers. However, spraying with ground-based equipment is often laborious and time-consuming (Oerke 2006; Matthews et al. 2014). Given the persistent labor shortage in oil palm plantations, there is an urgent need to automate labor-intensive tasks like harvesting and pesticide application. Spray operators also face challenges in achieving uniform herbicide distribution across certain areas (Chavan 2019), due to limited ground accessibility caused by irregular terrain, viz. steep slopes and undulation landscapes and water saturated soils. Thus, deploying an aerial sprayer is ideal for targeting isolated patches of weeds, especially in relatively small fields or areas with uneven distribution and varying elevations that are challenging to access without causing damage to the crops (Wang et al. 2020).

The use of an Unmanned Aerial Vehicle (UAV) for aerial spraying is an effective technique for reducing the tedious and time-consuming operations (Sun et al. 2020; Wang et al. 2022) by at least 33% compared to conventional approaches (Su et al. 2018). For instance, Qin et al. (2016) successfully demonstrated the spray efficiency and minimal damage of miniaturized UAV over the conventional stretcher sprayer for pesticide spraying in hilly areas of China. Castaldi et al. (2017) also highlighted the precision weed control system incorporating weed maps and an aerial spray system, which substantially reduced herbicide use by 39% compared to traditional blanket application. A key advantage of aerial application is its speed and capacity to cover large areas quickly, making it ideal for accessing crops in remote or inaccessible locations while minimizing potential crop damage and soil compaction associated with ground machinery (Cerro et al. 2021). Furthermore, aerial application reduces the risk of herbicide exposure for applicators by minimizing ground contact during spraying (Berner and Chojnacki 2017).

Effective pre-planting weed control is crucial to ensure optimum growth of young palms in the replanting areas, involving two strategies: the broadcast application of pre-plant herbicides and application of grass-selective post-emergence herbicides within the legume cover crops (Sustainable Palm Field Manual FGV 2018). Given the pressing labor issues and the drive for

improved efficiency, researchers are exploring alternative methods for a more cost-efficient weed control in oil palm plantations. One promising approach is the use of UAV for herbicide applications. Preliminary findings by FELDA Global Venture Research and Development (FGV R&D) observed that UAV spraying at the replanting stage can boost operational productivity from 3-4 hectares per man-day to 10-12 hectares per man-day. The adoption of UAV technology not only yields substantial labor savings but also demonstrates increased efficiency (Zhang et al., 2019). Furthermore, remotely operating the aerial sprayer and tank filler minimizes direct contact with chemicals during spraying operations, thereby reducing long-term chemical exposure (Reddy et al., 2020). Nonetheless, there is a lack of documentation on using aerial sprayers in oil palm plantations, particularly for broadcast spraying in replanting areas and targeted selective herbicides application in cover crops. Therefore, this study evaluated the weed control efficiency, crop phytotoxicity, and productivity of UAV spraying in the replanting areas of oil palm plantation.

Material and Methods

Unmanned Aerial Vehicle Specification

A custom-made electrical-powered unmanned aerial vehicle (UAV; Figure 1A) sprayer was obtained from VTS Universe Sdn. Bhd., Selangor, Malaysia. The UAV had a dimension of 110 cm in length/width, 65 cm in height and is equipped with a 120 cm boom length with six rotors, six flat-fan nozzles, and six sets of propellers. The six downward-oriented nozzles with a spray angle of 80° delivered a measured spray width ranging from 27 to 33 cm per nozzle and produced droplets size of 225-325 µm volume median diameter (VMD). The droplet intensity produced was a minimum of 40 droplets cm⁻². The UAV spray system had a 16 L capacity tank and a 15 kg payload.

Characterization of Droplet Deposition

The research was conducted in an open field at Tun Razak Agricultural Research Centre, FGV Agri. Services Sdn. Bhd. (3.8828° N, 102.5210° E), a scientific research base in Jerantut district, Pahang, Malaysia. Spray deposition was determined using two pressures, namely at 0.15 and 0.25 MPa, with a pressure gauge mounted on the aerial sprayer to ensure accurate

measurements (Figure 1B). The operation height was maintained 3 m above the soil surface, and the flight speed was 4 m s^{-1} .

Water sensitive papers (WSP; SpotOn® Paper, USA) were used to examine the coverage and distribution of droplets falling onto the ground. Briefly, the WSP were cut into small rectangular pieces ($2 \text{ cm} \times 2 \text{ cm}$) and then placed in a straight, central line, 1 m apart on the rubber wooden block spanning 10 m in total (Figure 2). The placement of WSP on the ground in a straight line served as qualitative and quantitative markers of the operations performed (Berner and Chojnacki 2017; Wang et al. 2020). The sample positions were replicated three times in the direction of the spray, with an interval of 10 m between each repeat. At 30 s after spraying, samples were photographed, and all water sensitive papers were collected and placed in plastic bag properly labeled with site information.

Sampling was only carried out at the center of each plot to prevent cross-contamination between fields. Number of droplets, density of droplets, and percentage of droplet coverage of the WSP were assessed using the Snap Card application (Android app developed by The University of Western Australia, Australia) and ImageJ software (an open-source Java-based image software version 1.53t developed by the University of Wisconsin, United States). The coverage was calculated as the percentage of blue dye of droplets deposited on the WSP (Lou et al. 2018; Ferguson et al. 2016).

Spray setting

The aerial spray operation (UAV) flow rate was set up between 2.1 and 2.7 L min^{-1} , delivering 40 L ha^{-1} over the target area. The spray was delivered through six flat fan nozzles mounted on a boom at a pressure of 0.25 MPa . The target application zone covered a swath 3 m wide at a height of 3 m . The aircraft spray was flown at a speed of 4 m s^{-1} , aiming for a medium droplet size of 225 to $325 \text{ }\mu\text{m}$ with a minimum density of $40 \text{ droplets cm}^{-2}$. Table 1 summarizes the spray parameter setting. Meteorological conditions prior to the UAV spraying were recorded using a weather meter (Kestrel 5500AG, Nielsen-Kellerman Company, USA). The spray was conducted when wind speeds were below 4 m s^{-1} , with temperatures between 30 and 40 C and a relative humidity below 60% . The application rate, flow rate, spray width, and forward speed were calibrated prior to herbicides treatment, as accordance a protocol by Matthews (2014) as follows:

1. Calculation of spray volume:

$$\text{Liter/hectare} = \frac{\text{Flow rate (L min}^{-1}) \times 10,000 \text{ m}^2}{\text{Swath (m)} \times \text{travel speed (m min}^{-1})} \quad [1]$$

$$\text{Flow rate} = \frac{\text{Nozzle output}}{10,000 \times \text{swath} \times 60 \text{ s}} \quad [2]$$

2. Chemical used per pump:

$$\text{Rate per pump} = \frac{\text{Herbicide recommended rate (L ha}^{-1}) \times \text{Pump capacity}}{\text{Spray volume (L ha}^{-1})} \quad [3]$$

Broadcast spraying at the re-planting stage

The efficacy of Unmanned Aerial Vehicle (UAV) for a broadcast pre-planting application was assessed by comparing weed control efficiency between two application methods: a mist blower application at 50 L ha⁻¹ and UAV application at 40 L ha⁻¹. The mist-blower (SR430, Stihl Inc., Germany) was equipped with a 14 L tank, cone nozzle, deflection, and double-deflection mesh for uniform dispersion. Its specifications included a 2-stroke engine, a spray swath of 10 m, and an adjustable pressure range from 0 to 3 MPa.

The spraying activities were conducted at the FGV Plantation Malaysia (FGVPM), Mengkarak 2 (3.2986° N, 102.3338° E), Bera, Pahang, Malaysia. The study area covered a total of 10 ha, with each hectare divided into ten plots. The terrain was relatively flat, and the replanting area had a high weed density. Each experimental plot was subjected to a specific treatment with an application method. To mitigate border effects, 1.0 m wide strips were excluded from each edge of the plots. The working width for spraying operations was set at 100 m to maintain a consistent spraying speed across the analyzed area. Buffer zones separated the plots, with each plot spaced 50 m apart to ensure sufficient separation between treatments and minimize potential cross-contamination or interference between adjacent plots. The herbicides used in the study were a tank mix of glyphosate isopropylamine (Roundup® Bayer Crop Science, St. Louis, MO, USA), at 608 g ai ha⁻¹ and metsulfuron-methyl (Ally®, Corteva Agriscience, USA) at 30 g ai ha⁻¹. The application rate was 50 L ha⁻¹ and 40 L ha⁻¹ for mist blower and the UAV, respectively. Polyether modified siloxane (Miracle® S240, G-Planter, Malaysia) at 1 mL L⁻¹ was used as the adjuvant to enhance spraying effectiveness, and a colorant (Clear View, G-Planter, Malaysia) at 1 mL L⁻¹ was added for monitoring purposes. The entire operation flow chart is depicted in Figure 3.

Selective post-emergence herbicides within cover crops

To evaluate the efficacy of UAV for selective spraying of legume cover crops, the productivity was compared between a conventional knapsack sprayer (CKS) at 450 L ha⁻¹ and a UAV application at 40 L ha⁻¹. Spraying operations were conducted at Tun Razak Agricultural Research Centre, Jengka, Pahang (3.7687° N, 102.5454° E), covering a total area of 2 ha. In this study, an undulating replanting area consisting of immature (15-16 months) oil palm trees was chosen, where legume cover crops (LCCs) *sinhala* (*Mucuna bracteate* DC) (50%), tropical kudzu [*Pueraria javanica* (Benth.) Benth.] (30%) and calopo (*Calopogonium mucunoides* Desv.) (20%) had been established six months prior.

A CKS (PB16, Jun Chong Sdn. Bhd., Malaysia) with a tank capacity of 16 L was equipped with a flat-fan nozzle for uniform dispersion. Its specifications included a manual pump, adjustable pressure settings, and a spray lance with a length of 60 cm. The spray zone had a width of 3 m in the middle area between the oil palm trees, with a row interval of 7.9 m. The selected herbicide for weed control was fluazifop-p-butyl (Fusilade, Syngenta, Switzerland) at 1.98 g ai ha⁻¹ with the addition of polyether modified siloxane (Miracle® S240, G-Planter, Malaysia) at 1 mL L⁻¹ as adjuvant and 1 mL L⁻¹ of colorant (Clear View, G-Planter, Malaysia) for monitoring purposes. The targeted weed species were hilograss (*Paspalum conjugatum* P.J. Bergius) and slender panicgrass [*Ottochloa nodosa* (Kunth) Dandy], and the spray method involved inter-row application between the LCCs.

Weed control efficacy

The percentage of weed control efficacy was determined by counting the number of plants showing necrosis from the growing tips to the soil surface at weeks 1, 2, 3, 4, 6, 8, and 12 after treatment. A visual scoring scale index was used to assess the impact of herbicides on target weeds, as presented in Table 2.

Spray effectiveness

Aerial capture was performed using a Phantom 4 Pro Multispectral multicopter (DJI, China) with Sequoia Multispectral sensor before and after the spraying, with a schedule of one week after spraying and then a two-week interval in the subsequent weeks. The captured images were analyzed to determine the effectiveness of the herbicide spray. The acquisition of images in

the visible, near-infrared, and short-wave infrared wavelength bands is referred to as multispectral remote sensing (Amigo 2019). Different objects reflect, absorb, and transmit certain bands of wavelength that can be captured using multispectral cameras.

The multispectral images were analyzed using an unsupervised classification technique in Earth Resources Data Analysis System (ERDAS) Imagine. Continuous raster data was classified into discrete thematic groups with similar spectral-radiometric characteristics. ERDAS Imagine uses the Iterative Self-Organizing Data Analysis Technique (ISODATA) clustering technique for unsupervised training and classification, which uses data statistics to evaluate the similarities and differences of pixel values before grouping them into distinct classes.

Cost efficiency

The total costs ha^{-1} and the annual cost ha^{-1} ($\text{RM ha}^{-1} \text{ yr}^{-1}$) were determined by considering chemical, labor, water, maintenance, number of spraying rounds, aerial sprayer, and transportation costs. All treatments were evaluated based on their cost-efficiency. All prices corresponded to the standard prices (open market). The cost efficiency was calculated following Turner and Gillbanks (2003):

$$\text{Cost efficiency (\%)} = 100 - \left[\left(\frac{a}{b} \right) \times 100 \right] \quad [4]$$

where, a represents the cost $\text{ha}^{-1} \text{ year}^{-1}$ from the treated plot and b is the cost $\text{ha}^{-1} \text{ year}^{-1}$ from the untreated plot. The cost components consist of herbicide application and operational costs. The herbicide application cost considers herbicide price L^{-1} , herbicide dosage ha^{-1} , and the percentage of the total treated area. The operational cost component is the sum of labor, water, maintenance, transportation, and UAV aerial spraying costs ha^{-1} , multiplied by the actual number of spraying rounds conducted throughout the year.

Time motion study

A time-motion study compared mist blower and UAV spraying weed control. The time was taken from the start of the spray and stopped at the end of the spraying mission. The working hours, operating time, and productivity (ha man-day^{-1}) to complete the task were recorded to compare the cost-efficiency between the two spray methods.

Data Analysis

The image classification was analyzed using an unsupervised classification technique in the Earth Resources Data Analysis System (ERDAS, Atlanta, GA) Imagine for multispectral images. Continuous raster data was classified into discrete thematic groups with similar spectral-radiometric characteristics. ERDAS Imagine uses the Iterative Self-Organizing Data Analysis Technique (ISODATA) clustering technique for unsupervised training and classification. It uses data statistics to evaluate the similarities and differences of pixel values before grouping them into distinct classes.

Statistical Analysis

Both experiments employed a randomized complete block design, with four replications. The general structure of the statistical model for the ANOVA analysis is represented as follows:

$$Y_{ijk} = \mu + \tau_i + \beta_j + \epsilon_{ijk}$$

where, the ANOVA assesses whether there are significant differences in the mean response variable (Y) among the treatment levels (τ_i) after accounting for the variation due to the random effects (β_j) and error term (ϵ_{ijk}). Data on weed efficacy between the pre-planting application of mist-blower and UAV, as well as CKS and UAV spraying in selective post-emergence application were subjected to one-way analysis of variance (ANOVA) using Statistical Analysis System version 9.4 (SAS Institute Inc., Cary, NC, USA) to determine significant differences between treatments. Means comparisons were performed using the Tukey's test at a 5% significance level.

Results and Discussion

Droplet deposition and distribution

Droplet distribution on water sensitive papers (WSP) at two different spray pressures (0.15 and 0.25 MPa) was analyzed using imaging software, namely Snap Card and ImageJ (Figure 4). At a lower pressure of 0.15 MPa, droplet coverage, as determined by Snap Card and ImageJ analysis, ranged from 2.2% to 4.9% and 1.0% to 4.9%, respectively (Table 3). The number of droplets deposited varied between 64 to 241 droplets cm^{-2} . When the spray pressure was increased to 0.25 MPa, both imaging analyses revealed a broader spectrum of droplet counts, ranging from 69 to 424 droplets cm^{-2} , and an increase in droplet coverage. These findings

show that higher pressure (0.25 MPa) resulted in a more uniform spray pattern and greater coverage compared to lower pressure (0.15 MPa). It is important to note that this study was limited by the maximum pressure capacity of the spraying equipment (0.25 MPa). Thus, further investigation at higher pressures could provide valuable insights into spray uniformity and coverage improvements.

The quality of spray coverage is influenced by droplet size, the number of deposits, and the coverage extent on target leaves (Zhu et al. 2011). Herbicide effectiveness is determined in part by the number of spray droplets per unit area, with more droplets increasing the likelihood of reaching the critical threshold for weed control. Both Snap Card and ImageJ were used to assess droplet distribution to ensure optimal spray quality (Table 3). At a pressure of 0.25 MPa, more droplets are produced. Shan et al. (2021) asserted that a minimum rate of 40 droplets cm^{-2} is required for effective weed control. Snap Card analysis showed that a coverage rate exceeding 4.5% corresponds to more than 40 cm^{-2} , making it a reliable method for auditing spray coverage. Between the two pressures tested, 0.25 MPa proved to be the most effective for spraying. This finding is supported by Xiao et al. (2020), who suggested a pressure range of 0.25 to 0.35 MPa for optimal coverage. Spray pressure influences droplet formation because the nozzle was designed to operate within a specific pressure range (Guo et al. 2021). Droplet distribution analysis on WSP cards at two different pressures demonstrated distinct differences. At 0.15 MPa, cards 4, 5, 6, and 7 had more than 3.5% coverage, with the minimum coverage being 2.2% on card 1. On the other hand, at 0.25 MPa, the maximum and minimum coverages were 5.6% and 2.9% on cards 8 and 10, respectively.

Optimal flight height during aerial spraying represents a delicate balance between minimizing herbicide drift and achieving uniform coverage across the target area. Flying too high increases the risk of spray drift, where the wind carries the droplets away and fails to reach the intended target. On the other hand, flying too low can cause uneven distribution, resulting in insufficient coverage on the upper parts of the plants or excessive application on the lower parts. This not only leads to wastage but also risks damaging the crops. The analysis conducted using Snap Card and Image J software showed that natural wind velocity and direction influenced the position of the spray swath (Table 4). Wind speed measured at various instances during the experiment showed variability, ranging from 7.8 m s^{-1} to 13.1 m s^{-1} . These variations can significantly impact the movement and dispersion of herbicide droplets. Higher wind speeds

(13.1 m s⁻¹) can potentially lead to greater horizontal movement of sprayed droplets, affecting the coverage and distribution of the herbicide. Lower wind speeds (7.8 m s⁻¹) may result in less horizontal movement, providing better control over the placement of sprayed materials. The wind speed values should be considered in herbicide application, with higher wind speed increasing the risk of drift and off-target movement. On the other hand, wind direction data represents the direction from which the wind is blowing at each measured instance.

The wind direction values varied between 30 and 120°, indicating different wind directions during the observation period. Wind direction is crucial for understanding how herbicides may drift. For instance, wind blowing parallel to the direction of herbicide application may result in less lateral movement. Variations in wind direction can influence the position and coverage of the swath region during herbicide application. Herbicide applicators should consider wind direction to minimize drift and ensure the herbicide is effectively delivered to the target area. The combination of wind speed and wind direction is essential for understanding the dynamics of herbicide application. Higher wind speeds may increase the risk of drift, and the direction of the wind plays a critical role in determining the trajectory of sprayed materials. Therefore, herbicide applicators need to carefully consider these factors to optimize efficacy while minimizing environmental impact.

Weed control efficacy

The usage of herbicides in oil palm plantations typically falls into two categories: broad spectrum (e.g. glyphosate, glufosinate, metsulfuron methyl) and selective (e.g. fenoxaprop, fluroxypyr methyl, triclopyr). Commonly chosen formulations include aqueous concentrates, emulsifiable concentrates, and wettable powders.

The analysis of weed vegetative cover over four different dates after treatment (DAT): 0 DAT, 8 DAT, 22 DAT, and 26 DAT reveal significant changes (Table 5). Initially, at 0 DAT, the weed vegetation cover was 1.65 ha, representing 100% of the area. Following the treatment, a substantial decline was observed at 8 DAT, with the weed/vegetative cover had reduced to 76.4%, indicating effective weed inhibition (see Figure 5 for the corresponding multispectral monitoring of weed cover after the UAV spray). This reduction continued at 22 DAT and 26 DAT, where the weed/vegetative cover reached 67.3% and 31.0%, respectively. The decrease in

weed cover over time demonstrates the efficacy of the UAV spraying method in reducing weed growth and distribution.

The effectiveness of herbicides, crucial for weed control in agriculture, is influenced by various factors. Environmental conditions, both before and after application, significantly affect herbicide performance. Factors like light, CO₂, temperature, rainfall, and wind impact topical applications, while soil temperature and moisture affect soil-applied herbicides. These conditions influence herbicide efficacy directly by affecting penetration and translocation mechanism, and indirectly by altering plant development and physiology. Understanding these factors is essential for optimizing herbicide use in agriculture.

While the use of UAV spray at the pre-planting stage successfully eliminated weeds, nonetheless its effectiveness in controlling grass weeds within the LCCs is limited and inferior to that of CKS application. The grass weeds exhibited minimal signs of scorching or damage. Multispectral images also failed to distinguish the mixed interspersed weeds from the legumes (Figure 6). This outcome highlights the challenge of effectively targeting the specific vegetation components within the densely packed legume cover crops using the UAV spray strategy.

The efficacy of UAV spray was compared to that of mist blower application. No significant difference was observed between the two methods at any weeks after treatment (WAT) interval (Table 6). At 1 WAT, both treatments resulted in 85% weed control efficacy, and from 2 WAT onwards, a remarkable weed control efficacy of 100% was achieved, indicating that both mist-blower and UAV spray applications were equally effective in eradicating weeds at the pre-planting stage. On the contrary, in the selective post-emergence herbicide application, a significant difference was observed in weed control efficacy between conventional knapsack sprayer (CKS) and UAV spray. In the early weeks after treatment (1-4 WAT), CKS possessed higher weed control efficacy (23.92% to 82.41%) compared to UAV spray treatment, yielding only 13.88% to 71.54% control (Table 7). As the time progressed, weeds in both treatments started to regrow, although CKS still maintained its superior weed suppression as compared to UAV spray, with a slower weed regrowth of 14.00% versus 23.94% at 6 WAT, 24.00% versus 34.80% at 8 WAT, and 31.00% versus 43.88% at 12 WAT, respectively. The findings suggest that CKS was more effective in managing weeds in the immature oil palm plantations.

Cost-effectiveness of UAV spray vs. conventional sprayers

The cost efficiency analysis shows that adoption of UAV spraying in areas less than 3000 ha was less effective as compared to the conventional methods (Tables 8 and 9). However, UAV became more cost effective in larger plantation areas. In the 3000 ha area, a 4% cost saving was evident by the UAV spraying over the CKS method, and this extended to 28% cost saving when UAV was used in the 15,000 ha area (Table 8). However, a different trend was observed in the UAV-mist blower cost-efficiency comparison, where mist blower was more cost effective in the sprayed area spawned to 5000 ha. The UAV only had the upper hand when the calculated area increased to 15,000 ha, having a 5% higher cost saving over the mist blower.

The linear regression analysis (Figure 7) shows a perfect correlation ($R^2 = 1$) and that the economies of scale are more favorable for UAV spraying when dealing with larger agricultural areas. Although the capital expenditure for the UAV is RM100,000, the UAV's value is expected to depreciate over time at a rate of 10% annually. Given the consistent cost savings, it suggests a potentially favorable return on investment.

Operational cost-efficiency and comparison between UAV spray and conventional sprayers

The operational cost-efficiency comparison between UAV spray and the CKS highlight the advantages of UAV spraying across various operational facets (Tables 10 and 11). While both CKS and mist blower required 8 hours for completion, UAV spraying significantly reduced working period to 5 hours, constituting a 37% reduction in operational time. This efficiency extended to resource consumption, with UAV sprayers resulting in a 91% and 20% reduction in water consumption as compared to CKS and mist blower, respectively. This assertion is supported by Hanif et al. (2022), who highlighted that the deployment of UAV for spraying not only results in a significant 90% reduction in water consumption and 30-40% reduction in pesticide usage, but also represents a significant leap in operational efficiency, with a staggering 40-fold increase in speed over the CKS method. Given that labor is a prevailing issue in the oil palm sector (Dilipkumar et al. 2020), the potential for UAV spray technology to reduce labor costs becomes even more apparent. Labor-dependent weed management methods in replanting fields are notorious for being time-consuming and labor-intensive. The Malaysian Palm Oil Association emphasizes the country's ongoing shortage of plantation labor, anticipating a loss of

20 billion ringgits (USD 4.6 billion) in 2023 alone. This scarcity not only jeopardizes supply but also has the potential to cause global price increases.

UAV spray technology achieved a significant 81% and 56% reduction in human expenses, effectively cutting costs to RM8.33 ha⁻¹ from RM43.00 ha⁻¹ for conventional spraying (CKS) and RM18.81 ha⁻¹ for mist-blower. This shift in approach resulted in an increased productivity, cheaper operational costs, shorter operating time (by 37%), lower transportation expenses (mainly water transport), and a safer working environment for operators. Despite the high initial cost of investment in equipment (aerial sprayer, mapping software, etc.), UAV has numerous advantages in the long run over the physical labor and time-consuming operations (Tang et al. 2021).

This study evaluated the use of UAV spraying for weed control in oil palm plantations. The investigation of droplet deposition characteristics determined that the application at 0.25 MPa pressure yielded optimal results, offering efficient coverage and distribution of droplets. The efficacy comparison between UAV and mist blower applications revealed a comparable weed eradication rate in the pre-planting application, although UAV spraying displayed a disadvantage in the post-emergence weed control in the LCCs. Cost-effectiveness analysis indicated that UAV spraying becomes economically viable for larger agricultural areas, with substantial savings potential. Specifically, deploying UAV for 15,000 ha in FGV plantations could result in 28% cost savings, equivalent to RM916,000 compared to the conventional approach of CKS.

Meanwhile, a 5% cost saving, which equal to RM114,400 was evident in the UAV as compared to the mist blower. The operational efficiency of UAV spraying was consistently superior, significantly reducing working hours (37% reduction in operational time), resource consumption (20%-91% of water consumption by using a mist blower and CKS), and human expenses (56%-81% reduction from RM18.81 & RM43.00 ha⁻¹ to RM8.33 ha⁻¹) when compared to conventional methods. The findings collectively advocate for integrating UAV-based spraying as an effective, efficient, and economically feasible approach for weed control in oil palm plantations, especially in extensive agricultural landscapes.

Acknowledgments

We extend our deepest gratitude to the members of FGV R&D and Agri Services for their invaluable support and collaboration throughout this study. Special thanks go to Associate Prof Dr. Muhammad Saiful Ahmad Hamdani for his guidance and insightful feedback during the research and manuscript preparation phases. Finally, we are grateful to our peer reviewers for their constructive comments and suggestions, which have greatly improved the quality of this paper.

Funding

The authors express their sincere gratitude to the FGV R&D and Agri Services Cluster for funding this research and granting permission to publish the paper.

Competing Interests

No conflicts of interest are present in the research, authorship, or publication of this article.

References

- Amigo JM (2019) Hyperspectral and multispectral imaging: Setting the scene. Pages 3-16 in *Data Handling in Science and Technology*, Elsevier
- Berner B, Chojnacki J (2017) Use of drones in crop protection. Pages 46-51 in *Proceedings of IX International Scientific Symposium, Farm Machinery and Processes Management in Sustainable Agriculture*. Lublin, Poland
- Castaldi F, Pelosi F, Pascucci S, Casa R (2017) Assessing the potential of images from unmanned aerial vehicles (UAV) to support herbicide patch spraying in maize. *Precis Agric* 18:76-94.
- Cerro J, Cruz Ulloa C, Barrientos A, de León Rivas J (2021) Unmanned aerial vehicles in agriculture: A survey. *Agronomy* 11:1-20
- Chavan MS (2019) Automatic aerial vehicle-based pesticides spraying system for crops. *Int J Innov Technol Explor Eng* 8:41-44
- Chen Y, Qi H, Li G, Lan Y (2019) Weed control effect of unmanned aerial vehicle (UAV) application in wheat field. *Int J Precis Agric Aviat* 2:25-31

- Dilipkumar M, Chuah TS, Goh SS, Sahid I (2020) Weed management issues, challenges, and opportunities in Malaysia. *Crop Prot* 134:104347
- Ferguson JC, Chechetto RG, Hewitt AJ, Chauhan BS, Adkins SW, Kruger GR, O'Donnell CC (2016) Assessing the deposition and canopy penetration of nozzles with different spray qualities in an oat (*Avena sativa* L.) canopy. *Crop Prot* 81:14-19
- Goh YK, Wong KL, Lai CH, Tan SY, Nazir T (2015) Control of *Mucuna bracteata* Dc. Ex. Kurz legume covers with herbicides in oil palm plantation: Spraying volume and frequency. *Oil Palm Bulletin* 70:1-7
- Guo S, Li J, Yao W, Hu X, Wei X, Long B, Li H (2021) Optimization of the factors affecting droplet deposition in rice fields by rotary unmanned aerial vehicles (UAVs). *Precis Agric* 22:1918-1935
- Hanif AS, Han X, Yu SH (2022) Independent control spraying system for UAV-based precise variable sprayer: A review. *Drones* 6:383
- Lou Z, Xin F, Han X, Lan Y, Duan T, Fu W (2018) Effect of unmanned aerial vehicle flight height on droplet distribution, drift and control of cotton aphids and spider mites. *Agronomy*, 8:187
- Matthews G, Bateman R, Miller P (2014) Pesticide application methods. John Wiley & Sons.
- Oerke EC (2006) Crop losses to pests. *J Agric Sci* 144:31-43.
- Qin WC, Qiu BJ, Xue XY (2016) Droplet deposition and control effect of insecticides sprayed with an unmanned aerial vehicle against plant hoppers. *Crop Protect* 85:79–88
- Shan C, Wang G, Wang H, Xie Y, Wang H, Wang S, Lan Y (2021) Effects of droplet size and spray volume parameters on droplet deposition of wheat herbicide application by using UAV. *Int J Agric Biol Eng* 14:74-81
- Su ASM, Yahya A, Mazlan N, Hamdani MSA (2018) Evaluation of the Spraying Dispersion and Uniformity Using Drone in Rice. Pages 394-397 in *Proceedings of the MSAE*. Serdang, Selangor: Malaysian Society of Association Executives Conference
- Sun F, Wang X, Zhang R (2020) Task scheduling system for UAV operations in agricultural plant protection environment. *J Ambient Intell Humaniz Comput* :1-15
- Sustainable Palm Field Manual FGV (2018) Third Edition. Felda Global Ventures (FGV)
- Tang Y, Dananjayan S, Hou C, Guo Q, Luo S, He Y (2021) A survey on the 5G network and its impact on agriculture: Challenges and opportunities. *Comput Electron Agric* 180:105895

- Turner PD, Gillbanks RA (2003) Oil Palm Cultivation and Management. Kuala Lumpur: The Incorporated Society of Planters, 672 p
- Vanhala P, Kurstjens DAG, Ascard J, Bertram A, Cloutier D (2004) Guidelines for physical weed control research: flame weeding, weed harrowing and intra-row cultivation. Pages 194-225 *in* Proceedings 6th EWRS Workshop on Physical and Cultural Weed Control. Lillehammer, Norway: European Weed Research Society
- Wang J, Lan Y, Wen S, Hewitt AJ, Yao W, Chen P (2020) Meteorological and flight altitude effects on deposition, penetration, and drift in pineapple UAV spraying. *Asia Pac J Chem Eng* 15:e2382
- Wang L, Huang X, Li W, Yan K, Han Y, Zhang Y, Lan Y (2022) Progress in agricultural unmanned aerial vehicles (UAVs) applied in China and prospects for Poland. *Agriculture* 12:397
- Xiao Q, Du R, Yang L, Han X, Zhao S, Zhang G, Wang Lan Y (2020) Comparison of droplet deposition control efficacy on phytophthora capsica and aphids in the processing pepper field of the unmanned aerial vehicle and knapsack sprayer. *Agronomy* 10:215
- Zhu H, Salyani M, Fox RD (2011) A portable scanning system for evaluation of spray deposit distribution. *Comput Electron Agric* 76:38-43

Table 1. Spray parameter setting

Parameter	Unit	Setting
Flow rate	L min ⁻¹	2.1-2.7
Spray volume	L ha ⁻¹	40
Number of nozzle and type	-	Six flat fan nozzles
Nozzle spray system	-	Boom spray at 1.2 m
Spray pressure	MPa	0.25
Spray height and spray width	m × m	3 × 3
Flying speed	m s ⁻¹	4
Droplet size in volume median diameter (VMD)	μm	Medium: 225-325
Droplet intensity	cm ⁻²	Min. 40
Aerial spray productivity	ha/day	10-15
Wind speed	m s ⁻¹	< 4
Temperature	°C	30-40
Relative humidity (RH)	%	< 60
Delta T (evaporation rate and droplet survival)	-	2-8
Wind speed	km h ⁻¹	5 ± 1
Time of day	-	0800-1100
Cloud cover	-	Partly cloudy

Table 2. Linear rating scale for weed efficacy assessment

Code	Effect	Rating	Level of control	Description
1	Complete	100	Complete control	Destruction of weeds
2	Severe	90	Excellent control	Very few weeds alive
		80	Good control	Stunted new weed seedlings
		70	Satisfactory	Severe injury stand loss, almost destroyed
3	Moderate	60	Moderate control	Near severe injury to weed. No recovery possible
		50	Deficient or moderate control	Persistent recovery doubtful
		40	Deficient control	Moderate injury recovery is possible
4	Slight	30	Poor to deficient	Injury is more pronounced but not persistent
		20	Poor control	Some stand loss stunting or discolor
		10	Inferior control	Slight stunting, injury, or disorders
5	None	0	No control	No injury due to herbicide application/normal

Source: Vanhala et al. (2004)

Table 3. Droplet distribution estimates on water sensitive paper (WSP) at 0.15 and 0.25 MPa analyzed using Snap Card and ImageJ

Spray pressure	WSP card no.	Droplet coverage		Droplet count
		Snap Card	ImageJ	ImageJ
MPa		-----%	-----	cm ⁻²
0.15	1	2.2	1.3	80 ± 0.18
	2	3.3	3.2	197 ± 1.53
	3	3.0	2.2	151 ± 0.67
	4	3.6	2.6	123 ± 2.45
	5	3.5	2.8	131 ± 1.96
	6	4.9	4.9	241 ± 0.34
	7	3.8	3.6	158 ± 1.74
	8	3.1	2.1	118 ± 1.85
	9	2.6	1.0	64 ± 2.53
	10	2.5	2.3	119 ± 1.26
0.25	1	5.2	4.7	272 ± 0.46
	2	4.7	2.7	183 ± 1.77
	3	4.8	4.1	218 ± 0.73
	4	5.0	4.2	226 ± 1.64
	5	4.2	2.7	135 ± 2.60
	6	4.3	2.8	168 ± 1.68
	7	4.9	4.7	282 ± 0.83
	8	5.6	8.6	424 ± 1.52
	9	3.5	2.0	104 ± 0.91
	10	2.9	1.1	69 ± 0.58

Table 4. Wind speed (m s^{-1}) and wind direction ($^{\circ}$) during spraying on ten water sensitive paper (WSP) positions

Position of WSP		1	2	3	4	5	6	7	8	9	10
Wind speed	m s^{-1}	8.5	12.8	11.5	10.2	10.5	13.1	12.0	8.9	13.1	9.2
Wind direction	$^{\circ}$	70	115	120	50	85	110	90	40	110	80

Table 5. Multispectral analysis of weed vegetative cover at 0, 8, 22, and 26 days after treatment (DAT)

Image		1	2	3	4
		0 DAT	8 DAT	22 DAT	26 DAT
Weed vegetative cover	ha	1.65 ± 0.43	1.26 ± 1.24	1.11 ± 0.56	0.51 ± 0.29
Weed vegetative cover	%	100	76.4	67.3	31.0

Data are mean ± SD

Table 6. Weed efficacy (%) between the use of mist-blower and Unmanned Aerial Vehicle (UAV) spray from 1 to 12 weeks after treatment (WAT) in the pre-planting application for general weed control in replanting area

Treatment	Weed control efficacy										
	Rate	1 WAT	2 WAT	3 WAT	4 WAT	6 WAT	8 WAT	12 WAT			
	L ha ⁻¹	-----%-----									
Control	Untreated	0 ± 0	b	0 ± 0	b	0 ± 0	b	0 ± 0	b	0 ± 0	b
Mist-blower	50	85.70 ± 0.20	a	100 ± 0	a	100 ± 0	a	100 ± 0	a	100 ± 0	a
Customized UAV spray	40	85.68 ± 0.12	a	100 ± 0	a	100 ± 0	a	100 ± 0	a	100 ± 0	a

Major weed species: *Paspalum conjugatum*, *Ageratum. conyzoides*, *Asystasia gangetica*, *Ottochloa nodosa*, *Borreria latifolia*, Soil type: Renggam series.

Data are means ± standard error (n=8). Means of treatments with the same letter for consecutive doses do not differ significantly at $p < 0.05$ (Tukey's test).

Table 7. Weed efficacy (%) between the use of conventional knapsack sprayer (CKS) and Unmanned Aerial Vehicle (UAV) spray from 1 to 12 weeks after treatment (WAT) for purification of legume cover crop

Treatment	Weed control efficacy														
	Rate	1 WAT		2 WAT		3 WAT		4 WAT		6 WAT		8 WAT		12 WAT	
	L ha ⁻¹	-----%													
Control	Untreated	0 ± 0	c	0 ± 0	c	0 ± 0	c	0 ± 0	c	0 ± 0	c	0 ± 0	c	0 ± 0	c
CKS	450	23.92	±	56.40	±	80.24	±	82.41	±	(14.00	±	(24.00 ± 0.18)	a	(31.00	±
		0.32	a	0.24	a	0.20	a	0.10	a	0.30)	a	0.39)	a		
Custom UAV spray	40	13.88	±	45.82	±	70.12	±	71.54	±	(23.94	±	(34.80 ± 0.24)	b	(43.88	±
		0.33	b	0.15	b	0.31	b	0.29	b	0.25)	b	0.27)	b		

Major weed species: *P. conjugatum*, *O. nodosa*. Soil type: Katong series (Typic Hapludox – sandy clay loam).

Data are means ± standard error (n=8). Means of treatments with the same letter for consecutive doses do not differ significantly at $p < 0.05$ (Tukey's test).

Table 8. Cost-efficiency comparison between conventional knapsack sprayer (CKS) and Unmanned Aerial Vehicle (UAV) spray for Felda Global Ventures (FGV Group)

Area	**Total cost of weeding for FGV group		Cost saving by using UAV spray	
	CKS	UAV spray	RM yr ⁻¹	%
Ha	-----	-----	RM yr ⁻¹	
1,000	216,020	341,620	(125,600)	-58
2,000	432,040	483,240	(51,200)	-12
3,000	648,060	624,860	23,200	4
4,000	864,080	766,480	97,600	11
5,000	1,080,100	908,100	172,000	16
15,000	3,240,300	2,324,300	916,000	28

Note: () No cost saving (i.e., exceeds the total cost)

*UAV value: RM 100,000 (capital expenditure), with capital return in the total operating area of 3,000 ha. Value after depreciation: 1st year: RM 90,000, 2nd year: RM 80,000, 3rd year: RM 70,000, 4th year: RM 60,000 and 10th year: RM 0 (Depreciated by 10% annually).

**Total cost ha⁻¹ includes chemical cost, labor cost, aerial sprayer cost (aerial spraying, aerial photo + others equipment), maintenance cost, transport and water cost. Price of herbicides according to FGV's price list in 2022. Total replanting areas: 15,000 ha⁻¹ yr⁻¹, coverage area: 100% with 2 rounds yr⁻¹.

Table 9. Cost-efficiency comparison between mist-blower and Unmanned Aerial Vehicle (UAV) spray for Felda Global Ventures (FGV Group)

Area	**Total cost of weeding for FGV group		Cost saving by using UAV spray	
	Mist-blower	UAV spray	RM yr ⁻¹	%
Ha	-----	-----	RM yr ⁻¹	%
1,000	162,580	341,620	(179,040)	-110
2,000	325,160	483,240	(158,080)	-49
3,000	487,740	624,860	(137,120)	-28
4,000	650,320	766,480	(116,160)	-18
5,000	812,900	908,100	(95,200)	-12
15,000	2,438,700	2,324,300	114,400	5

Note: () No cost saving (exceeds the total cost)

*UAV value: RM 100,000 (capital expenditure), with capital return in the total operating area of 3,000 ha. Value after depreciation: 1st year: RM 90,000, 2nd year: RM 80,000, 3rd year: RM 70,000, 4th year: RM 60,000 and 10th year: RM 0 (Depreciated by 10% annually).

**Total cost ha yr⁻¹ includes chemical cost, labor cost, aerial sprayer cost (aerial spraying, aerial photo + others equipment), maintenance cost, transport and water cost. Price of herbicides according to FGV's price list in 2022. Total replanting areas: 15,000 ha yr⁻¹, coverage area: 100% with 2 rounds yr⁻¹.

Table 10. Comparison in operational cost-efficiency between conventional knapsack spraying (CKS) and Unmanned Aerial Vehicle (UAV) spraying for weed control

Parameter	Rate	CKS	UAV
Working duration	hour	8	5
Operating time	0700-1530	100%	Save 37% time as compared to conventional
Labor cost	(RM ha ⁻¹)	43	*8.33 (Reduce 81% labor cost as compared to conventional)
Labor	no. of workers	6	3
Productivity	ha man-day ⁻¹	1.75	15 (Increase six times compared to conventional)
**Area reachability	-	Limited	Flexible
Health and safety risk	-	High exposure	Low exposure
Spray volume	L ha ⁻¹	450	40 (Reduce water consumption 91% compared to conventional)

Note: CKS: Conventional knapsack sprayer.

*Based on operator conductor's salary: RM2500 gross month⁻¹, 20 working days, productivity: 15 ha man-day⁻¹, optimum working spray time: 5 hr day⁻¹.

**Due to uneven, steep, or inaccessible terrain or sensitive environments where the ground vehicles would damage the area or crops.

Table 11. Comparison in operational cost-efficiency between mist-blower and Unmanned Aerial Vehicle (UAV) spraying for weed control

Parameter	Rate	Mist-blower	UAV
Working duration	hour	8	5
Operating time	0700-1530	100%	Save 37% time compared to mist-blower
Labor cost	RM ha ⁻¹	18.81	*8.33 (Reduce 56% labor cost compared to mist-blower)
Labor	no. of workers	4	3
Productivity	ha man-day ⁻¹	4	15 (Increase 3.75 times compared to mist-blower)
**Area reachability	-	Limited	Flexible
Health and safety risk	-	High exposure	Low exposure
Spray volume	L ha ⁻¹	50	40 (Reduce water consumption 20% compared to mist-blower)

Note: *Based on operator conductor's salary: RM2500 gross month⁻¹, 20 working days, productivity: 15 ha man-day⁻¹, optimum working spray time: 5 hr day⁻¹.

**Due to uneven, steep, or inaccessible terrain or sensitive environments where the ground vehicles would damage the area or crops.

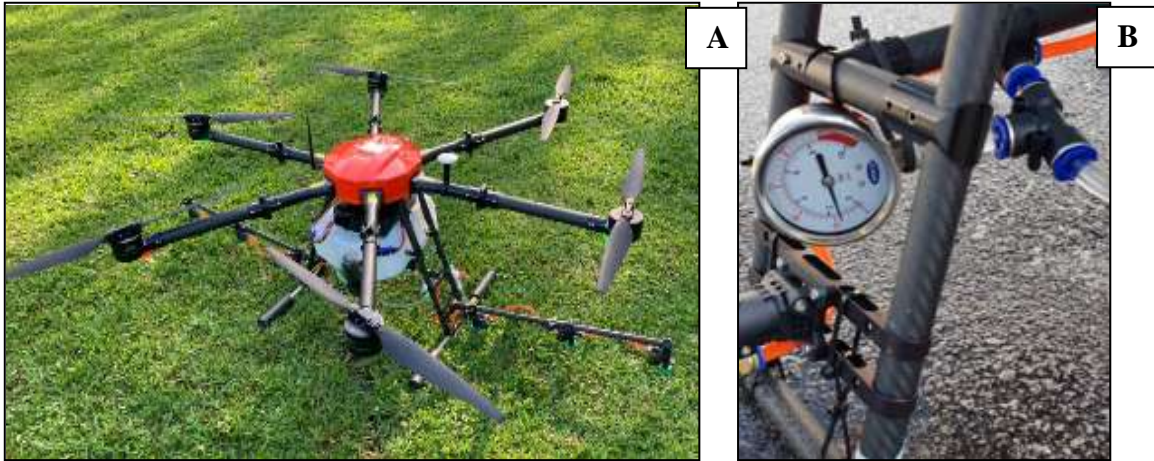


Figure 1. (A) Customized electrical-powered unmanned aerial vehicle (UAV) and (B) a pressure gauge mounted on the UAV

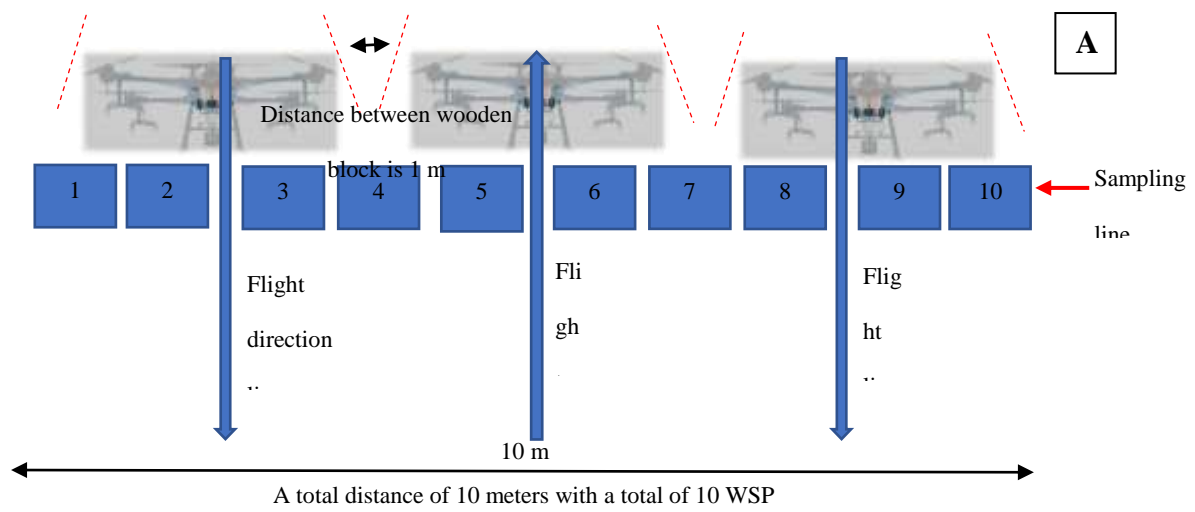


Figure 2. (A) Back-and-forth operating procedure in which deposition of the left-wing overlaps with that sprayed by the right-wing. (B) Water sensitive papers positioning in the open field and on the (C) wooden block

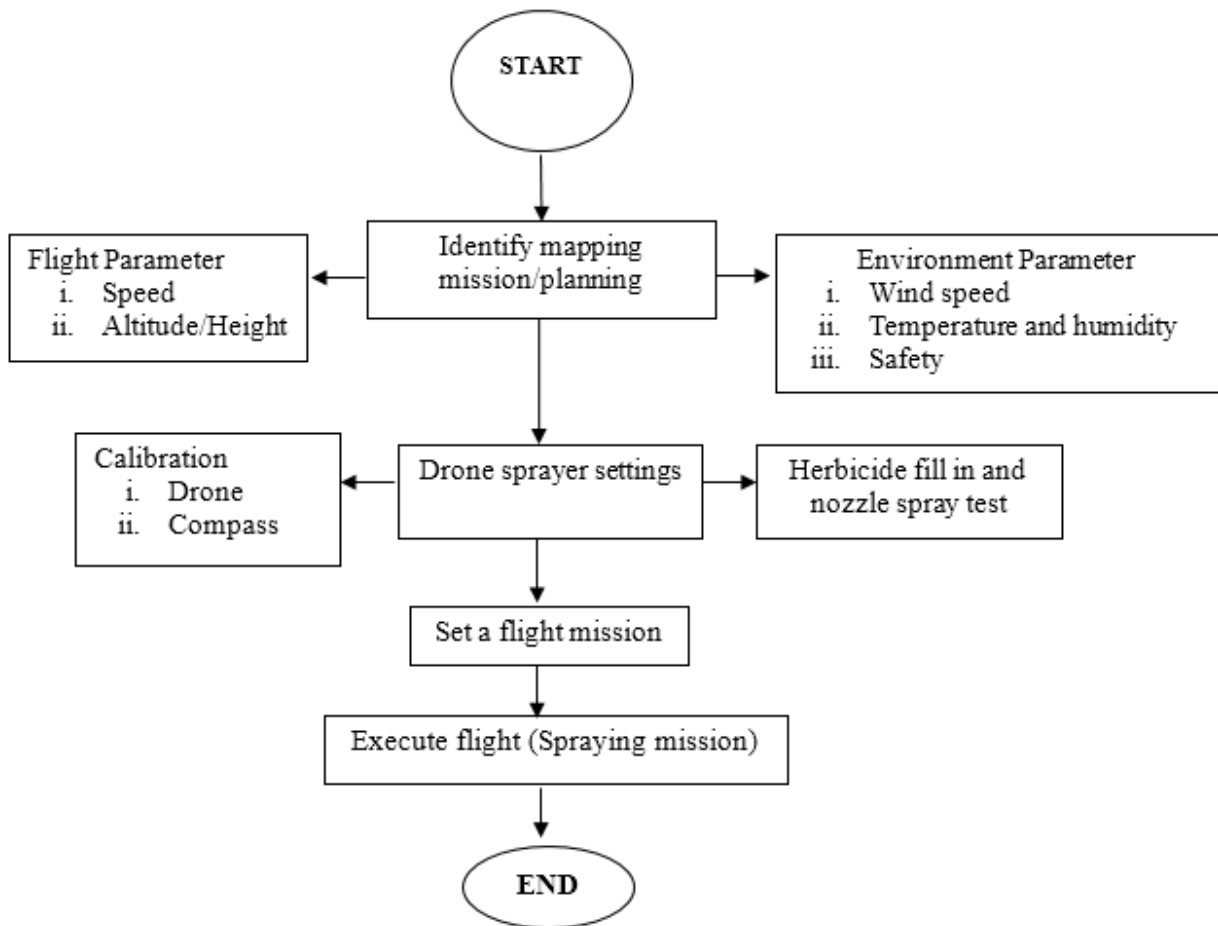


Figure 3. Spraying operation flow chart including pre-flight preparations, mission planning, calibration, flight execution, and post-flight procedures

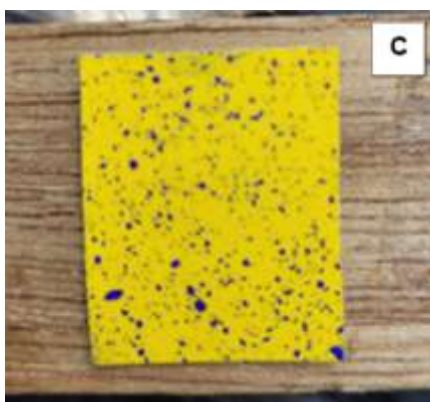
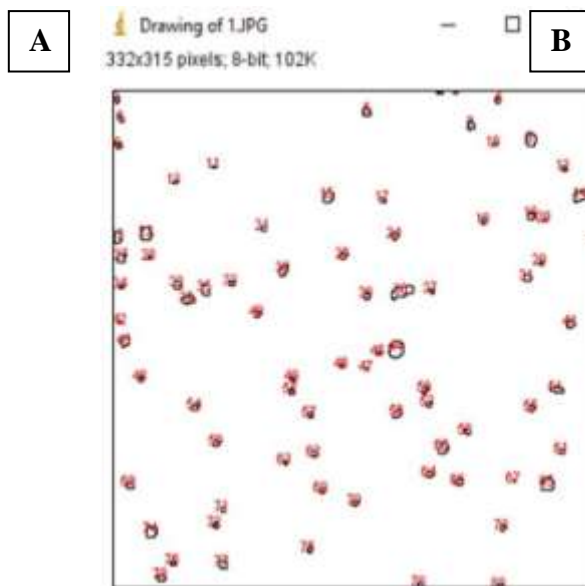


Figure 4. Droplet analysis using (A) Snap Card application and (B) ImageJ software and (C) Spraying deposition on WSP paper

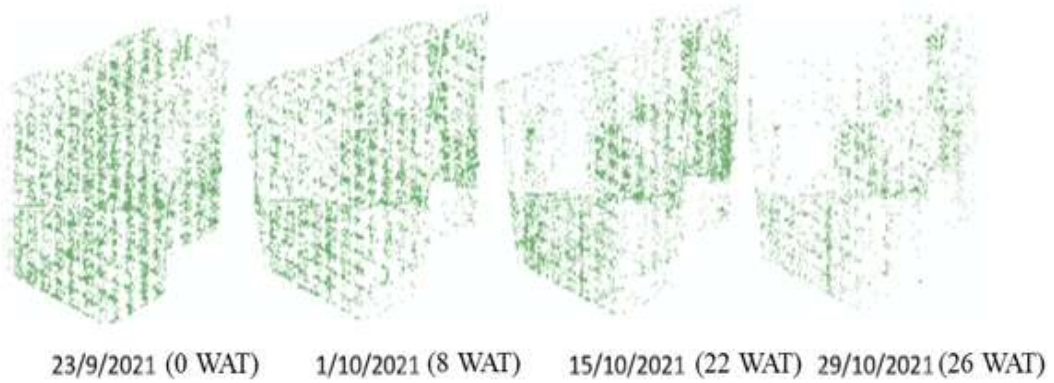
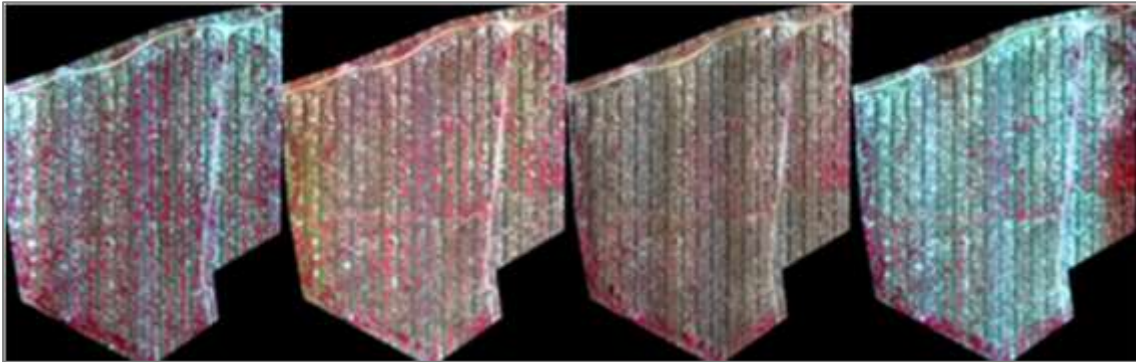


Figure 5. Monitoring weed cover at 0, 8, 22, and 26 days after treatment (DAT) using aerial imaging system equipped with multispectral sensor

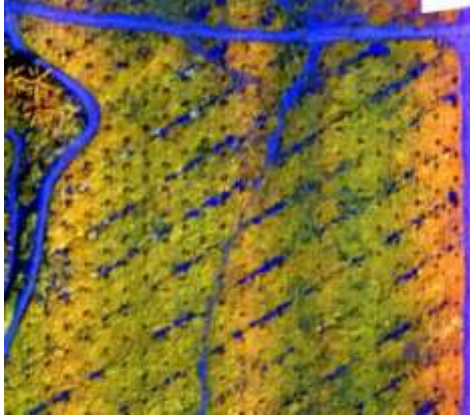

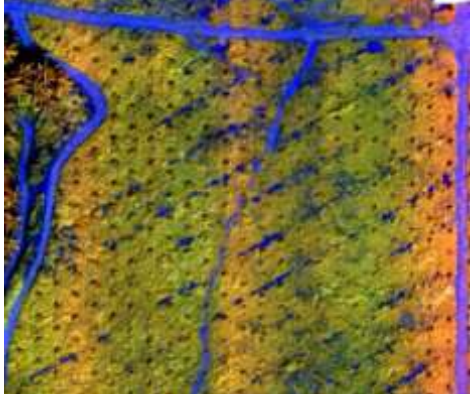

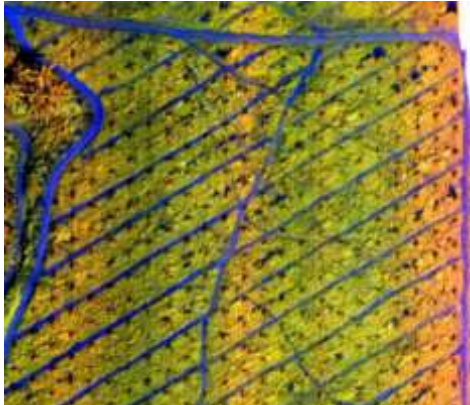

Date	Multispectral image	Field image
11 Nov 2021		
28 Nov 2021		
23 Dec 2021		

Figure 6. Visualizing the efficacy of UAV-based multispectral imaging in weed detection and field images of legume cover crops

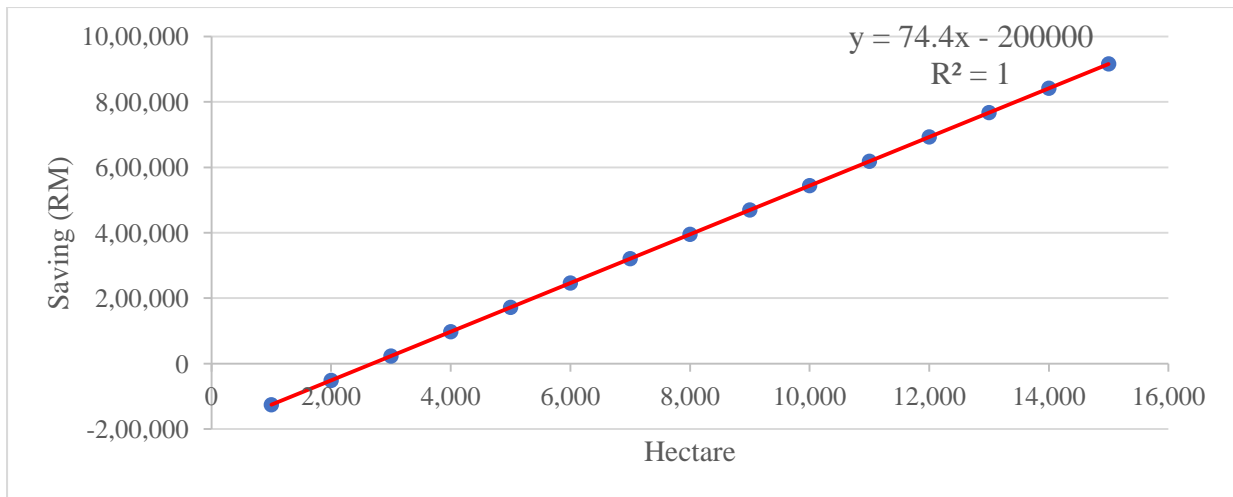


Figure 7. Linear regression of cost saving for aerial spray application