

CAMBRIDGE

JOURNALS

Cambridge Archaeological Journal

Published for the McDonald Institute for Archaeological
Research

Editor

John Robb, University of Cambridge, UK

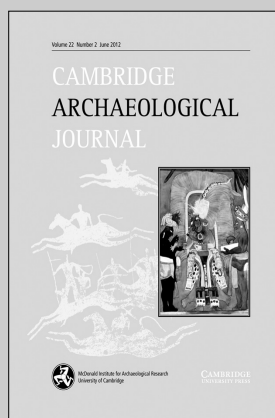
The *Cambridge Archaeological Journal (CAJ)* is the leading journal for cognitive and symbolic archaeology. It provides a forum for innovative archaeological research and theoretical discussion, with particular focus on the role and development of human symbolic capacities, beliefs and practices. Area coverage is world-wide, and *CAJ* covers the entire span from human origins to recent history. Specific topics covered in recent issues include: the use of cultural neurophenomenology for the understanding of Maya religious belief, agency and the individual, new approaches to rock art and shamanism, the significance of prehistoric monuments, ritual behaviour on Pacific Islands, and body metamorphosis in prehistoric boulder artworks. In addition to major articles and shorter notes, the *Cambridge Archaeological Journal* includes special topical sections and review features on significant recent books. The journal has a distinguished international editorial board of scholars of wide repute.

Price information

is available at: <http://journals.cambridge.org/caj>

Free email alerts

Keep up-to-date with new material – sign up at
<http://journals.cambridge.org/alerts>



Cambridge Archaeological Journal

is available online at:
<http://journals.cambridge.org/caj>

To subscribe contact Customer Services

in Cambridge:

Phone +44 (0)1223 326070
Fax +44 (0)1223 325150
Email journals@cambridge.org

in New York:

Phone +1 (845) 353 7500
Fax +1 (845) 353 4141
Email
subscriptions_newyork@cambridge.org

For free online content visit:
<http://journals.cambridge.org/caj>



CAMBRIDGE
UNIVERSITY PRESS

CAMBRIDGE

JOURNALS

New to Cambridge in 2013

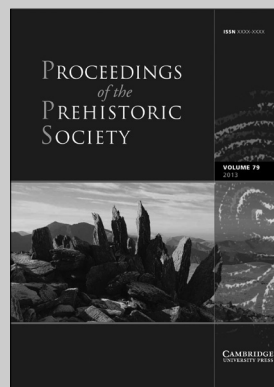
Proceedings of the Prehistoric Society

Published on behalf of the Prehistoric Society

Editor

Julie Gardiner, *The Prehistoric Society, UK*

The *Proceedings of the Prehistoric Society* bring the latest results of research into prehistory to a worldwide audience. Global in scope and ranging in time from the earliest traces of human activity to the advent of written history, the *Proceedings* offer an authoritative yet accessible account of our distant past.



Proceedings of the Prehistoric Society

is available online at:
<http://journals.cambridge.org/ppr>

**To subscribe contact
Customer Services**

Americas:

Phone +1 (845) 353 7500
Fax +1 (845) 353 4141
Email
subscriptions_newyork@cambridge.org

Rest of world:

Phone +44 (0)1223 326070
Fax +44 (0)1223 325150
Email journals@cambridge.org

Free email alerts

Keep up-to-date with new material – sign up at
journals.cambridge.org/ppr-alerts

For free online content visit:
<http://journals.cambridge.org/ppr>



CAMBRIDGE
UNIVERSITY PRESS

Guidance for contributors

Papers accepted for publication in the *Antiquaries Journal* are published online as soon as the final proofs have been passed by the author(s); hence we are able to offer swift digital publication that does not depend on an annual print cycle. We can also accept papers at any time of the year, though to appear in the annual printed volume that is published in September each year, the final and complete paper must have been submitted by 31 December of the preceding year.

The content of the *Journal* is multi-disciplinary, multi-national and multi-period in approach, as befits an organisation whose worldwide Fellowship is engaged in a very broad range of research based on the study of the material remains of the past – including all aspects of history, archaeology, art and architecture, conservation, heraldry, anthropological, ecclesiastical, documentary, musical, linguistic study and landscape study.

This diversity of coverage is a primary strength of the *Journal*, and is borne of the conviction that connections and insights often result from reading about research in another field than one's own. For this reason, the *Journal* seeks a balanced mix of papers in each volume, covering all periods, from prehistory to the present day, and crossing disciplinary boundaries to demonstrate the benefits of bringing different skills and approaches to bear on the chosen topic (for

example, studies that deploy evidence based on both historical and archaeological evidence).

In particular, the Society looks for papers that take an overview of a particular period, issue or set of problems, that are based on primary research, that do not simply describe the material remains of the past, but seek to throw light on their significance and meaning by setting them within relevant contexts, and that, in asking and answering questions of importance to the discipline, make a genuine contribution to the advancement of our knowledge in the relevant field of study.

As befits a Society that has been in existence for some 300 years and whose Fellows have helped to shape their evolving disciplines, the *Journal* is also interested in papers that place people, ideas and concepts within a historical context and that examine the development of antiquarian observation and thinking within the wider topic of the history of science and the humanities, as well as the extension of antiquarianism into the fields of public heritage policy, ethics and practice.

The *Journal* offers a variety of formats for publication, from short papers of at least 1,000 words to longer papers of up to 10,000 words, as well as long and short book reviews that can also be a platform for synthesis or original thought. With the advent of online publishing, we are also able to offer the capacity for publishing appendices and data

sets that support research papers but that are too long for publication in the *Journal*.

The primary readership of the *Journal* is the Society's Fellowship, but through library exchanges and institutional sales the *Journal* reaches a diverse international readership and its readers range from academics actively involved in primary research to students and amateurs. The readers are, by definition, scholarly and well informed, but contributions need to be presented in such a way as to be accessible to those whose specialities lie in fields other than those of the author. Detailed guidance on the preparation of papers for publication and on house style (including the style of footnotes and bibliographies) can be found on Cambridge Journals Online journals service at <http://assets.cambridge.org/ANT/ANTifc.pdf>.

All papers submitted to the *Journal* for consideration undergo a peer-review process, and might be referred back to authors for further work, and the editors of the *Journal* have a specific brief to rework material if necessary to ensure that published papers are lucid, succinct and grammatically and syntactically correct. Authors are asked to check papers once edited to ensure that factual errors have not been introduced through this editorial process, but as some authors object to such an interventionist editorial policy, it is best to discuss specific concerns before submitting material for publication.

Papers

Mesolithic and Neolithic human remains from Foxhole Cave, Gower, South Wales <i>Rick Schulting, Linda Fibiger, Richard Macphail, Rowan McLaughlin, Emily Murray, Catherine Price and Elizabeth A Walker, FSA</i>	1
New insights into Early Bronze Age damascene technique north of the Alps <i>Daniel Berger, Katja Hunger, Sabine Bolliger-Schreyer, Daniel Grolimund, Stefan Hartmann, Jan Hovind, Felix Müller, Eberhard H Lehmann, Peter Vontobel and Marie Wörle</i>	25
Delivering bodies unto waters: a Late Bronze Age mid-stream midden settlement and Iron Age ritual complex in the Fens <i>Christopher Evans, FSA</i>	55
Rethinking Romano-British *Corinium <i>Richard Coates, FSA</i>	81
Gold glass tesserae said to be from the Roman villa site at Southwick, West Sussex <i>Liz James, G J Leigh and Nadine Schibille</i>	93
Life before the minster: the social dynamics of monastic foundation at Anglo-Saxon Lyminge, Kent <i>Gabor Thomas, FSA</i>	109
Monumentalising the political landscape: a special class of Anglo-Saxon assembly site <i>John Baker and Stuart Brookes, FSA</i>	147
Hall and chambers: Oakham Castle reconsidered <i>Nick Hill, FSA</i>	163
A fragment of a gilt-bronze buckle frame from Soham, Cambridgeshire, and the Dune hoard belt buckle in Stockholm <i>T A Heslop, FSA, and Steven Ashley, FSA</i>	217
Luxury and locality in a late medieval book of hours from south-west England <i>Julian Luxford, FSA</i>	225
A building project for William, Lord Paget, at Burton-on-Trent <i>Nicholas Cooper, FSA</i>	249
'Made ... with admirable artistry': the context, manufacture and history of a Taíno belt <i>Joanna Ostapkowicz</i>	287
'This islande is inhabited with all sortes': the archaeology of creolisation in Speightstown, Barbados, and beyond, AD 1650–1900 <i>Niall Finneran, FSA</i>	319
William Stukeley in Stamford: his houses, gardens and a project for a Palladian triumphal arch over Barn Hill <i>John F H Smith, FSA</i>	353
The photograph album of Albert Henry Scott, the photographer son of George Gilbert Scott <i>Gavin Stamp, FSA</i>	401
Reviews	417

Cover image: silver-gilt buckle and buckle plate from the Dune hoard, Dalhem parish, Gotland, Sweden (inv. no. 6849:65). Photograph: © Ulrik Skans/Stockholm: Statens Historiska Museum