

Surviving in a hostile landscape: *Nothofagus alessandrii* remnant forests threatened by mega-fires and exotic pine invasion in the coastal range of central Chile

MAURO E. GONZÁLEZ, MAURICIO GALLEGUILLOS, JAVIER LOPATIN, CLAUDIA LEAL
CONSTANZA BECERRA-RODAS, ANTONIO LARA and JOSÉ SAN MARTÍN

Abstract *Nothofagus alessandrii*, categorized as Endangered on the IUCN Red List, is an endemic, deciduous tree species of the coastal range of central Chile. We assessed the effects of fire severity, invasion by the exotic fire-prone *Pinus radiata*, and land-cover composition and configuration of the landscape on the resilience of fragments of *N. alessandrii* after a mega-fire in 2017. We used remote sensing data to estimate land-use classes and cover, fire severity and invasion cover of *P. radiata*. We monitored forest composition and structure and post-fire responses of *N. alessandrii* forests in situ for 2 years after the mega-fire. In the coastal Maule region wildfires have been favoured by intense drought and widespread exotic pine plantations, increasing the ability of fire-adapted invasive species to colonize native forest remnants. Over 85% of *N. alessandrii* forests were moderately or severely burnt. The propagation and severity of fire was probably amplified by the exotic pines located along the edges of, or inside, the *N. alessandrii* fragments and the highly flammable pine plantations surrounding these fragments (> 60% of land use is pine plantations). *Pinus radiata*, a fire-adapted pioneer species, showed strong post-fire recruitment within the *N. alessandrii* fragments, especially those severely burnt. Positive feedback between climate change (i.e. droughts and heat waves), wildfires and pine invasions is driving *N. alessandrii* forests into an undesirable and probably irreversible state (i.e. a landscape trap). A large-scale restoration programme to design a

diverse and less flammable landscape is needed to avoid the loss of these highly threatened forest ecosystems.

Keywords Chile, Endangered species, exotic invasion, *Nothofagus alessandrii*, *Pinus radiata*, wildfire

Introduction

Land-use and land-cover changes are major threats to biodiversity conservation that result in forest loss, fragmentation and degradation (Pereira et al., 2010; Lindenmayer, 2012). Regions of high biodiversity that experience continual threats (Myers et al., 2000) need attention as the shifts in land-use and land-cover patterns, and climate change, exacerbate disturbance processes such as wildfires, insect irruptions, invasions of exotic species, droughts and heat-induced tree mortality (Allen et al., 2010; Veblen et al., 2011; Gaertner et al., 2014; Seidl et al., 2017; Miranda et al., 2020).

The temperate forests of south-central Chile are a biodiversity hotspot (Myers et al., 2000) because of their high species richness and endemism, and habitat loss and wildlife population declines. The native forests and biodiversity in the coastal region (35°–37° S) of south-central Chile are particularly threatened because of the high human population density and conflicting land-use demands (Armesto et al., 1998; Echeverría et al., 2006; Alaniz et al., 2016; Miranda et al., 2016). Here several narrowly distributed and endemic tree species of the Maulino forests (sensu San Martín & Donoso, 1996) are categorized as Endangered on the IUCN Red List because of intense deforestation and fragmentation (e.g. *Nothofagus alessandrii*, *Gomortega keule*, *Pitavia punctata*; Lara et al., 1996; Barstow et al., 2017; IUCN, 2018). There are few public or private areas protecting these species' rich and endemic ecosystems (Armesto et al., 1998; Pliscoff & Fuentes-Castillo, 2011; Bannister et al., 2012). Only 15% of the total area of *N. alessandrii* forests lie within protected areas (Santelices et al., 2012). During 1981–1991, the *N. alessandrii* forests declined at an annual rate of 8.15% of their area, resulting in the loss of > 50% of these forests in that period, mainly because of the expansion of industrial *Pinus radiata* plantations (Bustamante & Castor, 1998; Grez et al., 1998; Heilmayr et al., 2016). As of 2008, the remnant 314 ha

MAURO E. GONZÁLEZ* (Corresponding author, orcid.org/0000-0002-4333-724X, maurogonzalez@uach.cl) and ANTONIO LARA*† (orcid.org/0000-0003-4998-4584) Instituto de Conservación, Biodiversidad y Territorio, Centro del Fuego y Resiliencia de Socioecosistemas, Universidad Austral de Chile, Casilla 567, Campus Isla Teja, Valdivia, Chile

MAURICIO GALLEGUILLOS* (orcid.org/0000-0003-4617-0980) and JAVIER LOPATIN* (orcid.org/0000-0002-5540-7428) Facultad de Ingeniería y Ciencias, Universidad Adolfo Ibáñez, Santiago, Chile

CLAUDIA LEAL* and CONSTANZA BECERRA-RODAS* (orcid.org/0000-0001-7754-280X) Escuela de Graduados, Facultad de Ciencias Forestales y Recursos Naturales, Universidad Austral de Chile, Valdivia, Chile

JOSÉ SAN MARTÍN Instituto de Ciencias Biológicas, Universidad de Talca, Talca, Chile

*Also at: Centro de Ciencia del Clima y la Resiliencia, Santiago, Chile

†Also at: Fundación Centro de los Bosques Nativos, Valdivia, Chile

Received 4 July 2021. Revision requested 27 October 2021.

Accepted 26 January 2022. First published online 24 October 2022.

of *N. alessandrii* forests were confined to a mosaic of many small (< 2 ha) and scattered fragments surrounded by a matrix of exotic pine plantations (Grez et al., 1998; Santelices et al., 2012), making them prone to disturbances such as forest fires and invasive species.

Anthropogenic fires and the invasion of exotic species are significant threats to the survival of the Maulino forests. Since 2010 forest fire activity has increased in south-central Chile, particularly in the coastal range of the Maule region (Carvajal & Alaniz, 2019). Droughts and heatwaves are the main factors associated with increasing numbers of large wildfires and the burning of larger areas (Garreaud et al., 2017; González et al., 2018; Bowman et al., 2018). During the 2016–2017 fire season, an extreme and destructive mega-fire (named Las Máquinas) initiated by human action burnt an area of 160,000 ha, including 55% (172 ha) of the last remnants of *N. alessandrii* forests (Valencia et al., 2018). Pine plantations may favour the spread of large fires (McWethy et al., 2018; Bowman et al., 2018) and promote the invasion of *N. alessandrii* fragments by massive seedling recruitment of *P. radiata*, a pyrophytic species (i.e. adapted to fire).

Key drivers of ecosystem change can interact with and reinforce each other, and can shift entire landscapes into undesirable and potentially irreversible states (i.e. landscape traps) in which major functional and ecological attributes are compromised (Lindenmayer et al., 2011). For instance, post-fire salvage logging in tropical rainforests and the subsequent increase of fire-prone grassland species can lead to an altered fire regime that limits recovery (van Nieuwstadt et al., 2001; Cochrane & Laurance, 2008). Similarly, alteration of the stand structure in temperate forests by logging can increase the occurrence and severity of wildfires through modification of fuel types and loads (Odion et al., 2004; Lindenmayer et al., 2009, 2011). In north Patagonia, *Araucaria araucana* forests affected by extreme wildfire events and re-burns after short intervals, attributed to changing climate trends and land-use practices, have favoured a transition to a fire-prone landscape, creating a potential landscape trap, especially when invaded by *Pinus* species (Cóbar-Carranza et al., 2014; González et al., 2020).

Forest fires and invasion by exotic species are critical emerging pressures, especially for the coastal range Maulino forests (San Martín & Sepúlveda, 2002; Bustamante et al., 2003; Santelices et al., 2018; Carvajal & Alaniz, 2019; González et al., 2019; Leal, 2020). Here we examine the effects of the 2017 Las Máquinas mega-fire on the last remnants of forests harbouring *N. alessandrii*, a rare, endemic deciduous tree species of the coastal range of central Chile. Our main goals were to: (1) assess the severity of the fire in the *N. alessandrii* forest fragments affected by the mega-fire, (2) determine the land-cover composition and configuration of the main land uses surrounding the *N. alessandrii* forest fragments, (3) assess the invasion of *P. radiata* into *N. alessandrii* forests, and (4) evaluate the survival and post-fire responses of these threatened

forests 2 years after the fire. Finally, considering the critical state of these forests, we recommend restoration and management strategies at the landscape and forest scales to avoid the loss of the last remnants of these threatened *N. alessandrii* forest ecosystems.

Study area

The study area lies in the coastal range of the Maule region of central Chile. The predominant climate is Mediterranean, characterized by winter rainfall, with dry summers in September–April (Beck et al., 2018). *Nothofagus alessandrii* (family Nothofagaceae) grows in relatively deep soils (> 50 cm) of metamorphic and granitic origin, which are relatively poor, with low phosphorus content, and are highly susceptible to erosion (San Martín et al., 2013). We studied nine *N. alessandrii* populations burnt by the 2017 mega-fire. Six of these populations are in the southern burnt area and three in the northern burnt area (Fig. 1).

Nothofagus alessandrii is an endemic, broad-leaved deciduous tree species that occurs in small patches on south, south-west or south-east facing aspects at elevations of 160–440 m (Donoso & Lara, 1996). This species forms nearly pure or mixed second-growth post-fire forests originated mostly from vegetative reproduction (i.e. suckers arising from the base of a tree). In mixed stands it is associated with *Nothofagus glauca* and other hygrophylous (*Aextoxicon punctatum*, *Nothofagus obliqua*, *Gevuina avellana*) and mesophytic (*Cryptocarya alba*, *Peumus boldus*) species of the sclerophyllous forests (San Martín et al., 1984; Donoso, 1996). The present distribution of *N. alessandrii* forests is restricted and fragmented along 100 km of the coastal range of central Chile within a landscape dominated by extensive industrial forest plantations of *P. radiata*, and shrublands (San Martín et al., 1984). These forests are thought to be remnants of a much larger population (Baldwin et al., 2018). The small forest patches include 15 populations of 1–67 ha, with a total forest cover of 314 ha (Donoso, 1996; San Martín & Donoso, 1996; San Martín & Sepúlveda, 2002; Santelices et al., 2012, 2018). Currently, *N. alessandrii* is one of the most threatened tree species in continental Chile and is recognized as a Natural Monument (Hechenleitner et al., 2005; MMA, 2021) and categorized as Endangered on the IUCN Red List (Barstow et al., 2017; Baldwin et al., 2018).

Methods

Remote-sensing data and fire severity assessment

We used radar-based and optical information from the Sentinel-1 and Sentinel-2 satellites, respectively, to assess the fire severity of the nine burnt *N. alessandrii* populations (172 ha).

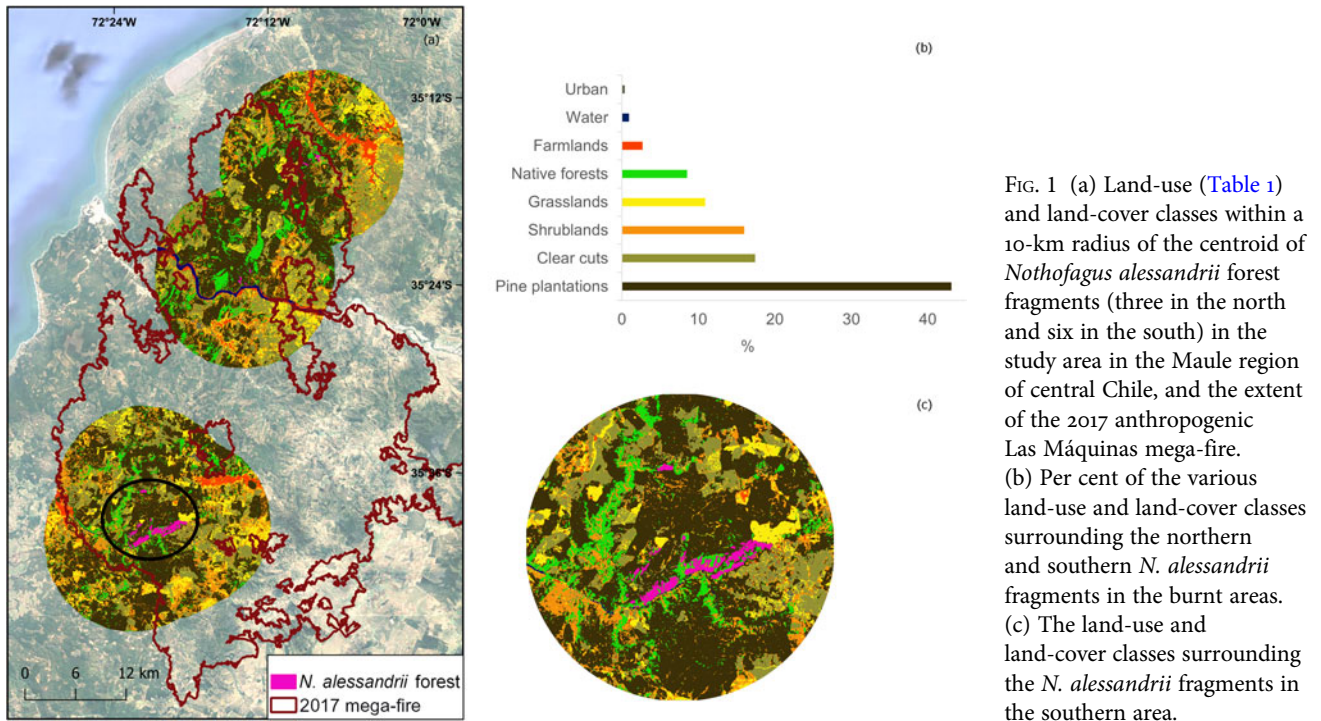


FIG. 1 (a) Land-use (Table 1) and land-cover classes within a 10-km radius of the centroid of *Nothofagus alessandrii* forest fragments (three in the north and six in the south) in the study area in the Maule region of central Chile, and the extent of the 2017 anthropogenic Las Máquinas mega-fire. (b) Per cent of the various land-use and land-cover classes surrounding the northern and southern *N. alessandrii* fragments in the burnt areas. (c) The land-use and land-cover classes surrounding the *N. alessandrii* fragments in the southern area.

We selected pre-fire images from both satellites (January 2017) and a post-fire image from Sentinel-2 (March 2017).

The radar-based Sentinel-1 image was obtained from *Google Earth* (Google, Mountain View, USA) and included vertical–horizontal and vertical–vertical polarities and a speckle filter correction (Lee et al., 1994). We used the *sen2r* package (Ranghetti et al., 2020) in *R 4.0.1* (R Core Team, 2020) to obtain and process the optical Sentinel-2 images. We applied radiometric and atmospheric corrections to convert the data from the top of the atmospheric radiance to the bottom of the atmospheric reflectance. We selected bands with 10 or 20 m spatial resolution (B2, B3, B4 and B8) corresponding to the visible, near-infrared (NIR) and shortwave-infrared (SWIR) spectra for further post-processing. Using these bands, we estimated the normalized difference vegetation index, green normalized difference vegetation index and soil-adjusted vegetation index as indicators of vegetation vigour and greenness.

We used the difference normalized burn ratio (dNBR) as a fire severity proxy as it integrates pre- and post-fire vegetation status (Fernandez-Manso et al., 2016; Mallinis et al., 2018). Firstly, we used the NIR and SWIR Sentinel-2 bands to assess the pre- and post-fire normalized burn ratio of the vegetation as:

$$\text{NBR} = (\text{NIR} - \text{SWIR}) / (\text{NIR} + \text{SWIR}) \quad (1)$$

Secondly, we assessed the difference between pre- and post-fire greenness as:

$$\text{dNBR} = \text{NBR}_{\text{pre-fire}} - \text{NBR}_{\text{post-fire}} \quad (2)$$

Because of the low variability amongst the intermediate severity classes, we reclassified the five dNBR classes (Key & Benson, 2006) into three fire severity classes, supported by ground truthing: (1) high severity (carbonized tree trunks, stems and leaves; $\text{dNBR} > 0.66$), (2) moderate severity (trees did not retain leaves or needles and most of the crown canopy was burnt; $0.27 < \text{dNBR} < 0.66$), and (3) low severity (trees possess green foliage and most of their structure was not severely affected by the fire; $\text{dNBR} < 0.27$).

Finally, we used a lidar-derived digital terrain model resampled to a resolution of 10 m from which we depicted the topographical position index using *SAGA GIS* (Conrad et al., 2015). This index indicates whether, in relation to its neighbours, a pixel corresponds to a flat, concave or convex area. We uploaded all images and derived variables to *Google Earth* for further cloud-based post-processing.

Land use and land cover surrounding *N. alessandrii* forests

We selected the nine fire-affected *N. alessandrii* populations mapped by Corporación Nacional Forestal (Valencia et al., 2018). We then identified the main land use and land cover (Table 1) within a 10-km radius area of influence around the centroid of *N. alessandrii* forest patches. Because the nine *N. alessandrii* populations are geographically separate, we analysed patches in the northern and southern areas of the mega-fire. We used all of the derived remote-sensing

TABLE 1 Land-use classes in the study area of the Maule region in central Chile estimated using remote-sensing data (Fig. 1).

ID	Land-use class	Description
1	Open shrublands & grasslands	Areas without trees, with scarce vegetation cover & seasonal grassland &/or shrubland species, especially <i>Vachellia caven</i>
2	Pine plantations	Young & adult industrial exotic <i>Pinus radiata</i> plantations (with closed canopies)
3	Shrublands	Areas with low woody canopy cover dominated by shrubs & native or exotic invasive tree species
4	Native forests	Areas associated with the coastal Maulino forest ecosystem dominated by <i>Nothofagus glauca</i> , with few fragments dominated by <i>Nothofagus alessandrii</i>
5	Urban	Human settlements (small towns & villages)
6	Water	Major water bodies
7	Farmlands	Crops & rain-fed vineyards
8	Clear cut or young pine plantations	Industrial <i>Pinus radiata</i> plantations recently harvested or planted within the last 5 years & with an open canopy

variables described in the previous section for the analysis, including optical (Sentinel-2 bands and indices), structural (Sentinel-1) and topographical (digital terrain model and topographical position index) information.

We collected 90 training and 30 validation polygons per class (first seven classes of Table 1) using visual interpretation of high-resolution Google Earth images and a 2016 land-cover map (Zhao et al., 2016). We then used Google Earth to train and validate a random forest classifier (Breiman, 2001) using the collected samples. We tuned and assessed model performance using the overall accuracy metric obtained from the confusion matrix.

Classifying clear cuts or young pine plantations (identified as class 8 in Table 1) was spectrally complex as these classes are often confused with crops, shrublands and naturally non-vegetated areas. To overcome this, we used the Google Earth integration of the LandTrendr algorithm (Kennedy et al., 2018) to segment and assess time since last disturbance using normalized difference vegetation index time series analysis. We analysed annual data for 1990–2016. We assumed that disturbances during 2011–2016 occurring inside the shrubland and grassland classes corresponded to the ‘clear cuts or young pine plantations’ class and reclassified them accordingly. We did not consider fire occurrences during 2011–2016, so there could be small assignment errors to class 8. Finally, we applied a majority filter to improve the classification and to obtain per-class coverages (in ha and per cent, respectively).

Pinus radiata invasions inside *N. alessandrii* forest fragments before the mega-fire

To develop a pre-fire land-cover map, we selected pre-fire images from Sentinel-1 and Sentinel-2 from 19 January 2017, 1 week before the Las Máquinas mega-fire. Within this map we assessed *P. radiata* invasion inside the *N. alessandrii* forest fragments by counting the number of pixels classified as pine (corresponding mainly to dominant pine trees) inside the native forest. Then we depicted the coverage of the invasion in ha. We reclassified shrubland predictions into native forest classes as we know from field experience that these forest stands do not have dominant shrubland species.

Forest composition and structure, and post-fire responses of burnt *N. alessandrii* forests

We assessed the survival and post-fire responses of a second-growth *N. alessandrii* forest affected by the Las Máquinas mega-fire. This remnant, corresponding to one of the nine *N. alessandrii* forest populations, is located in El Desprecio (The Neglected) property owned and protected by a private company dedicated to forest plantations. The mega-fire occurred in summer 2017 and burnt almost 100% of this *N. alessandrii* population.

In April 2017 (i.e. 2 months after the fire), we set nine 250-m² circular plots (8.9-m radius) in stands with low, moderate and high dNBR-based severity levels. In these plots we recorded all tree species (native and exotic) and measured the diameter at breast height of all individuals with a diameter at breast height ≥ 5 cm. We classified the survival status of the trees as either dead (stems and canopy burnt without green foliage) or alive (green foliage in the stems and/or crowns, and/or basal vegetative sproutings). In each plot we set 12 circular subplots of 3.14 m² (1-m radius) to count the number of tree seedlings (0.05–2.00 m in height) of the various species and to assess their regeneration origin (i.e. seeds or basal sprouts of trees). We assessed the survival status of trees and seedling recruitment again 2 years after the fire, in April 2019.

Results

Fire severity, and land use and land cover surrounding *N. alessandrii* forests

Of the 172 ha of *N. alessandrii* stands burnt by the 2017 mega-fire (corresponding to 55% of the total area), 15% (25 ha) was burnt by a low-severity fire and 47% (81 ha) and 38% (66 ha) were burnt by moderate- and high-severity fires, respectively. The land-use and land-cover map of the first seven classes (Table 1) had an overall accuracy of 87%.

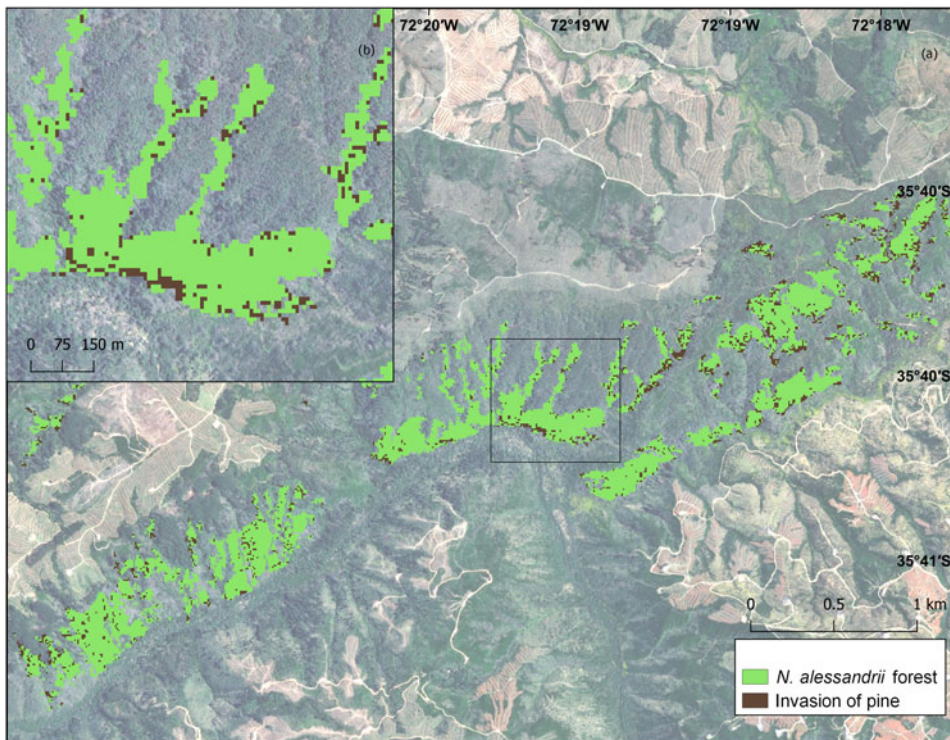


FIG. 2 (a) Invasions of pine *Pinus radiata* into *N. alessandrii* forest fragments in the southern study area in the Maule region of central Chile, and (b) magnification illustrating the invasion of pine at the edges of *N. alessandrii* fragments.

The land-use and land-cover map indicated that 60% of the area surrounding *N. alessandrii* forests corresponded to *P. radiata* plantations and clear cuts of this tree species (Fig. 1). Shrublands were the primary native vegetation type surrounding *N. alessandrii* forests, with 16% cover, and only 8% of the area was classified as native forests (Fig. 1b), with a fragmented spatial pattern.

Pinus radiata invasion inside *N. alessandrii* forests before the mega-fire

We estimated that *P. radiata* had invaded and become a dominant species in the forest canopy in 16% (28 ha) of the total area of the nine *N. alessandrii* populations (172 ha) before the mega-fire occurred in 2017 (Fig. 2). These invasions were mainly along the edges of the fragments close to plantations and clear cuts (Fig. 2b). The range of *P. radiata* cover in the nine populations was 11–40%. Smaller fragments had a greater cover of pine compared to larger fragments.

Forest composition and structure, and post-fire responses of burnt *N. alessandrii* forests

The structure of *N. alessandrii* stands indicates that at the time these fragments were affected by the 2017 mega-fire, they were in an intermediate state of development, with a density of 1,200–3,240 trees/ha and a basal area of 17–74 m²/ha. The diameter distribution of these second-growth

patches shows a greater number of trees in the smallest size class (5–15 cm diameter at breast height) representing an evenly aged cohort established after a high-severity fire (Fig. 3a). In addition, *N. alessandrii* stands feature adult *P. radiata* (> 50 cm diameter at breast height) trees established in forest clearings in recent decades.

The survival status measured 2 months after the 2017 mega-fire demonstrated high mortality of *N. alessandrii* trees independent of fire severity (Fig. 3a). Nevertheless, by April 2019 > 80% of the *N. alessandrii* trees had re-sprouted, demonstrating their ability to survive high-severity fires (Fig. 3b, Plate 1b). Evidence for recurrent and severe fires having shaped these fragments comes from the protuberances formed at the bases of many trees as a result of continuous re-sprouting. Post-fire recruitment of *N. alessandrii* from seeds was low by 2019 (< 17%) and restricted to the fragments affected by low- and moderate-severity fires. All adult *P. radiata* affected by moderate severity fires were killed.

During the 2 years after the fire, seedlings of *P. radiata* colonized the burnt sites at high density from seeds stored in serotinous cones, particularly in fragments burnt with high severity (Plate 1c). By 2019 the number of seedlings of *P. radiata* was 1,600–15,000 per ha in the burnt sites (Fig. 3b).

Discussion

Since 1750, *N. alessandrii* forest stands have been degraded and destroyed as a result of fires set by people, and by

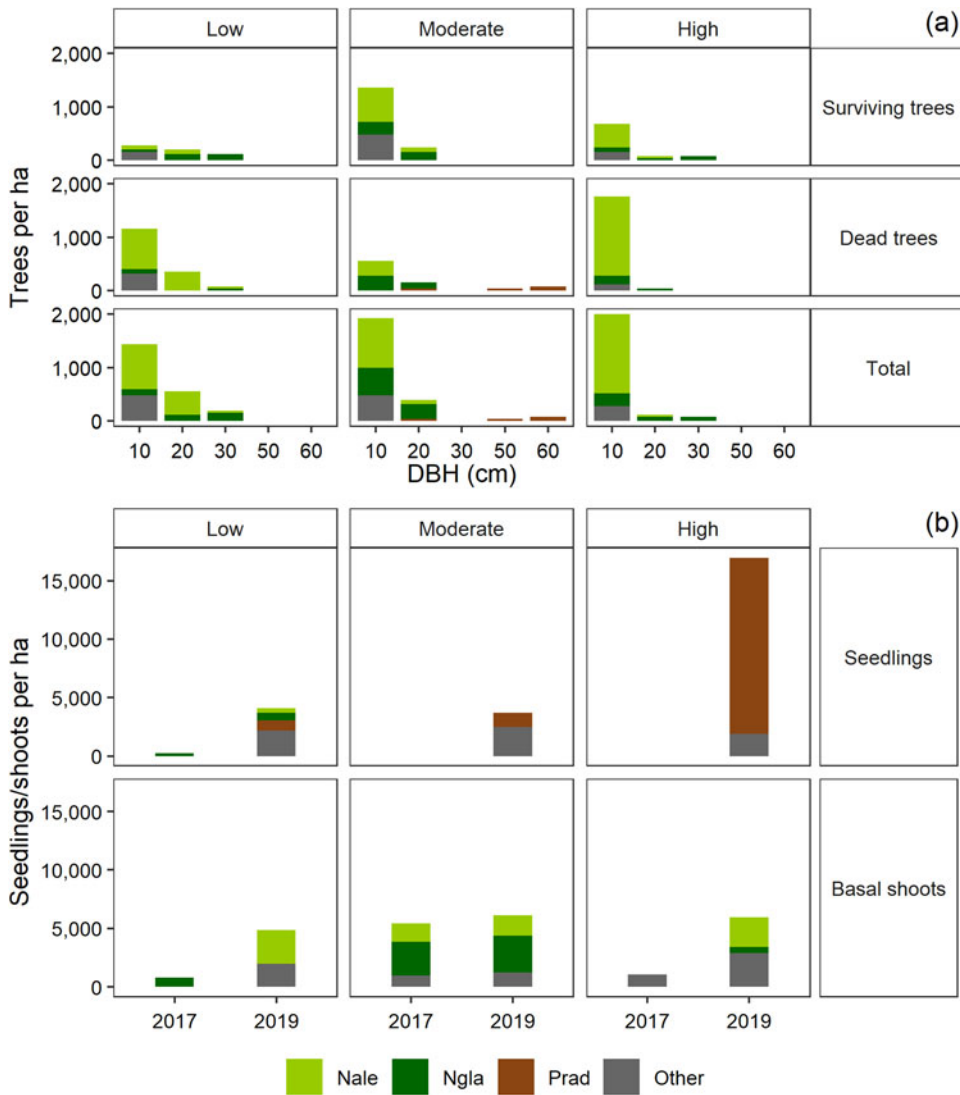


FIG. 3 Tree survival and tree species seedlings or shoots stands within *N. alessandrii* forest stands in the Maule region of central Chile affected by low-, moderate- and high-severity fires. (a) Diameter at breast height (DBH) distribution of tree species (10 cm refers to the class 5–15 cm, etc.) in the *N. alessandrii* stands showing surviving, dead and total trees in April 2017 (i.e. 2 months after the anthropogenic Las Máquinas mega-fire). (b) Post-fire recruitment of *N. alessandrii* and associated tree species from seeds and vegetative shoots monitored in April 2017 and 2019. Note the high invasion of *Pinus radiata* seedlings. Nale, *Nothofagus alessandrii*; Nglá, *Nothofagus glauca*; Prad, *Pinus radiata*; Other: *Cryptocarya alba*, *Aextoxicon punctatum*, *Persea lingue* and *Gevuina avellana*.

logging (Donoso & Landaeta, 1983; Donoso & Lara, 1996), and since the 1970s this has occurred because of the conversion of the Maulino forests to fast-growing industrial plantations of *P. radiata* associated with a large-scale subsidy programme from the Chilean state through Decree Law 701 (Donoso & Lara, 1996; Lara et al., 1996; San Martín & Donoso, 1996; Bustamante & Castor, 1998; Echeverria et al., 2006; Heilmayr et al., 2016). Currently, the landscape is dominated by an extensive and homogeneous matrix comprising forest plantations and scattered, small fragments of *N. alessandrii*. *Pinus radiata* is categorized as Endangered in its native habitat in California, with a population that is severely fragmented. One of the main threats *P. radiata* faces is competition from other trees in the absence of periodic fires (Farjon, 2013).

The Las Máquinas mega-fire burnt 160,000 ha, including 55% (172 ha) of the last forests of *N. alessandrii*, a threatened species protected by law. Extreme weather conditions characterized by heatwaves and strong winds (Bowman et al.,

2018) resulted in > 85% of these forests being burnt with moderate or high severity (Valencia et al., 2018). However, the ease of propagation and the severity of the fire were probably amplified by the large proportion of monoculture plantations of highly flammable trees surrounding *N. alessandrii* fragments (> 60% of the land use covered by pine plantations). The presence of adult *P. radiata* within the fragments of *N. alessandrii*, especially in the smaller fragments and at their edges, could also have increased the spread and severity of the fire (Veblen et al., 2011; Cobar-Carranza et al., 2014; García et al., 2015; Raffaele et al., 2016; Taylor et al., 2016).

Stand-replacing fires have shaped *N. alessandrii* forests over the past centuries (Donoso, 1996; González et al., 2019, 2022). The 2017 mega-fire that affected these second-growth stands demonstrated the ability of *N. alessandrii* to cope with and recover after fires. Most trees survived mainly through vegetative reproduction, by re-sprouting from the epicormic buds at the bases of the trunks of the dead

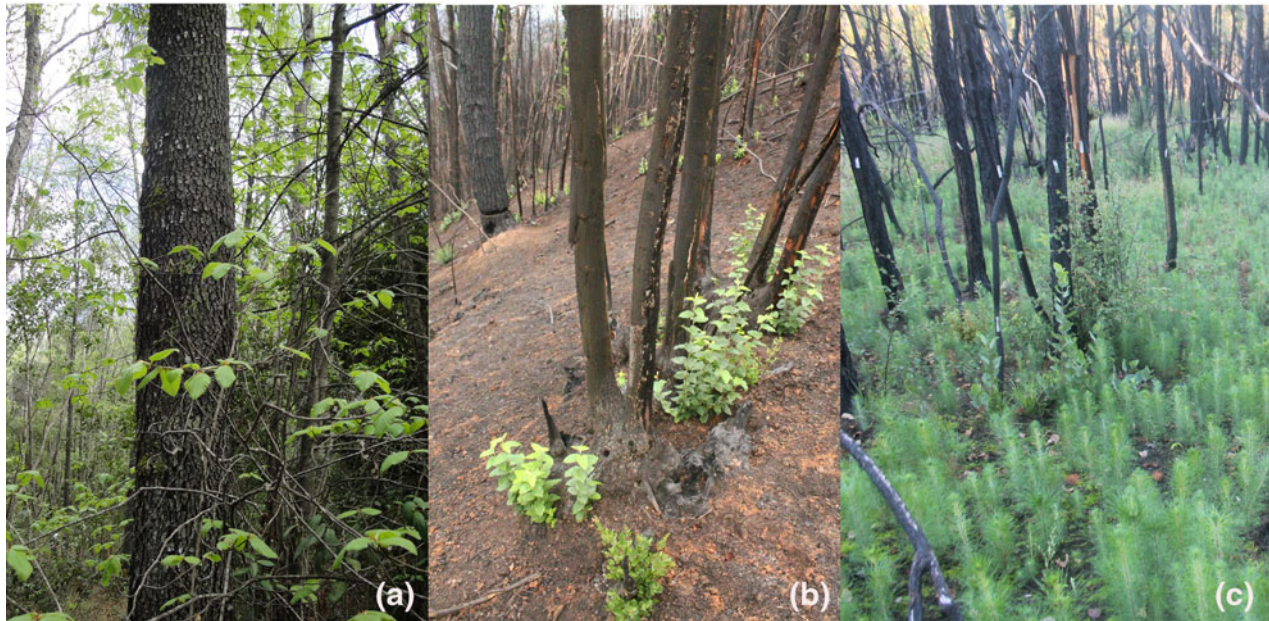


PLATE 1 (a) *Nothofagus alessandrii* second-growth forest. (b) *N. alessandrii* forest burnt with high severity in the private protected area El Despreo and sprouting from burnt *N. alessandrii* trees (note in the background, left, an adult pine *Pinus radiata*). (c) Dense post-fire recruitment of *P. radiata* from seeds. Photos: (a) M.E. González; (b,c) C. Becerra-Rodas.

trees, which frequently displayed protuberances as evidence of re-sprouting following past fire events. *Pinus radiata* trees died in this mega-fire event because of their greater flammability (González et al., 2019).

Species of the genus *Pinus* are highly invasive in the Southern Hemisphere, where they are used extensively in plantations for industrial timber production (Richardson et al., 1994; Simberloff et al., 2009; Langdon et al., 2010; Cobar-Carranza et al., 2014; Pauchard et al., 2016; Raffaele et al., 2016). These introduced pines are pioneer species adapted to regenerate after high-severity fires (e.g. from the serotinous cones of *P. radiata*) or to survive fires and provide seed sources for post-fire regeneration (Williams & Wardle, 2007; Veblen et al., 2011). In the coastal Maule region, fire has been a key disturbance process promoting the invasion of *P. radiata* into native forest remnants. Fires that affect the matrix dominated by this exotic conifer stimulate the release of large amounts of viable wind-dispersed seeds from the serotinous cones of surrounding plantations, which facilitates their invasion of *N. alessandrii* and other native forest stands (Williams & Wardle, 2007). After the 2017 mega-fire the fire-prone pines demonstrated rapid post-fire recruitment within the *N. alessandrii* forests because of the abundant seeds stored in the serotinous cones of killed pines within these forest fragments (Veblen et al., 2011; González et al., 2019, 2022). Pine density was particularly high in forests burnt with high severity. Considering that 85% (147 ha) of the *N. alessandrii* forests were burnt with moderate or high severity, a potentially dense invasion of exotic pines would be expected, which would reduce the resilience of these forests to fire disturbances.

Since 2010, forest fire activity has increased in south-central Chile. The increase in large wildfires and area burnt, and the extension of the fire seasons, have been associated with increased drought conditions and heatwaves (González et al., 2018; Bowman et al., 2018). Furthermore, pine plantations have been heavily affected (in terms of area and severity) under the extreme fire conditions facilitated by drying and warming climate trends (Garreaud et al., 2017; González et al., 2018; McWethy et al., 2018), leading to positive feedback between wildfires and invasions (Taylor et al., 2016). Thus, *P. radiata* invasion after wildfires converts *N. alessandrii* forests into areas of fire-prone pyrophytic vegetation (a condition also favoured by invasions of exotic shrubs such as *Teline monspessulana* and *Cytisus scoparius*; Pauchard et al., 2014; García et al., 2015; Kitzberger et al., 2016; Raffaele et al., 2016). Major changes in landscape spatial patterns (i.e. massive industrial plantations of *P. radiata*) and feedback processes (i.e. increased fire activity and invasions of exotic species) are leading *N. alessandrii* forests into a landscape trap (sensu Lindenmayer et al., 2011). Most examples of landscape traps involve a modified disturbance regime and forest structure and composition, invasion processes and climate change as key drivers of ecosystem change, which can shift the forested landscape into an altered and irreversible state that is ecologically impaired (Cochrane & Laurance, 2008; Lindenmayer et al., 2011; Bowman et al., 2014; Cobar-Carranza et al., 2014; Fairman et al., 2015; Kitzberger et al., 2016; Tepley et al., 2017; González et al., 2021).

Recognition of the processes that could lead to a landscape trap requires the use of diverse approaches and tools (Lindenmayer et al., 2011). Remote-sensing technologies are

essential to assess invasion processes and the spatial and temporal attributes of fires (i.e. severity and size) at the landscape level (Kattenborn et al., 2019; Fassnacht et al., 2021). In addition, the IUCN Red List of Ecosystems (Alaniz et al., 2019) can inform policy process and identify policy instruments that could improve ecosystem-level outcomes for biodiversity conservation (Keith et al., 2015). The use of complementary and integrated approaches at a national scale would facilitate the study of temporal ecosystem changes and generate landscape-integrated conservation and restoration strategies, including those that are pertinent to *N. alessandrii* stands. Thus, land-use planning and large-scale restoration are key to changing those landscape spatial characteristics that render areas vulnerable to human and natural disturbances.

Programmes focused on the conservation of *N. alessandrii* forests at the landscape scale should receive high national priority to prevent the disappearance of these ecosystems. Such programmes will need to design a more diverse, heterogeneous and less flammable landscape through the conversion of 40–50% of industrial forest plantations in each 20,000–50,000 ha watershed to native forests, including *N. alessandrii*. This should also include the creation of 40–50 m wide buffer zones along streams and headwaters surrounded by exotic forest plantations and/or other productive uses. Converting these areas to native forests would introduce fire breaks as native forests are significantly less flammable than plantations and provide ecosystem services such as water provision, carbon sequestration, maintenance of soil fertility, recreation and habitat conservation. Such conversion would require large-scale restoration programmes designed and implemented through collaborations between the government, timber companies, NGOs and other landowners. This could be part of the restoration at the landscape scale of 1 million ha, committed by Chile as a National Determined Contribution to the Conference of the Parties (COP25, Madrid 2019) of the United Nations Framework Convention on Climate Change. This landscape-scale restoration appears to be the only realistic way to maintain sustainable timber supply from productive forest plantations that are compatible with the conservation of *N. alessandrii* stands and other forest types, as well as the provision of ecosystem services under current and future fire regimes and the drying and heating trends associated with climate change. This landscape restoration plan is ambitious but probably the only way to ensure the survival of the remaining *N. alessandrii* stands and the re-establishment of stands in the historical distribution of the species through restoration. The restoration programmes should also create buffer zones (or fire breaks) around remnant *N. alessandrii* stands when surrounded by exotic pine plantations, to protect them from fire and invasion by exotic species. These buffer zones should be 40–50 m wide and covered by short native shrubs surrounded by 40–100 m of thinned and pruned plantations, to reduce

fuel load. These programmes should also create a financial foundation for the conservation, restoration and study of *N. alessandrii* stands, comprising public and private funding and led by stakeholders living in the Maule region, along with a strong outreach programme. A model for this kind of organization could be Corporación Alerce, which is dedicated to the conservation of *Fitzroya cupressoides* (alerce), a large, long-lived, threatened conifer in southern Chile and an iconic species that is more abundant than *N. alessandrii*. At the stand scale, the most urgent actions are to control the post-fire regeneration of pines established in *N. alessandrii* stands and to remove large adult pines from these stands. Effective land-use planning and the implementation of restoration and forest management strategies are priorities if we are to protect the Maulino forests and avoid the extinction of *N. alessandrii* forest ecosystems.

Acknowledgements Research support was provided by Fondo Nacional de Desarrollo Científico y Tecnológico, Fondo de Financiamiento de Centros de Investigación en Áreas Prioritarias, Centre for Fire and Socioecosystem Resilience, and Forestal Mininco S.A. through the Ecological Restoration and Recovery of Ecosystem Services project. We thank Mauricio Barría for field assistance, Alamiro Navarrete from Forestal Mininco S.A. for assistance in the restoration project, Forestal Arauco S.A. for providing 5-m resolution digital elevation model products, and two anonymous reviewers for their helpful critiques.

Author contributions Conception, design: MEG, MG, JL, CL, CB-R; data collection: MEG, MG, CB-R; data analysis, writing: MEG, MG, JL, CL, CB-R, AL, JSM; revision: all authors.

Conflicts of interest None.

Ethical standards This study abided by the *Oryx* guidelines on ethical standards.

References

- ALANIZ, A.J., GALLEGUILLOS, M. & PEREZ-QUEZADA, J.F. (2016) Assessment of quality of input data used to classify ecosystems according to the IUCN Red List methodology: the case of the central Chile hotspot. *Biological Conservation*, 204, 378–385.
- ALANIZ, A.J., PÉREZ-QUEZADA, J.F., GALLEGUILLOS, M., VÁSQUEZ, A.E. & KEITH, D.A. (2019) Operationalizing the IUCN Red List of Ecosystems in public policy. *Conservation Letters*, 12, e12665.
- ALLEN, C.D., MACALADY, A.K., CHENCHOUNI, H., BACHELET, D., McDOWELL, N., VENNETIER, M. et al. (2010) A global overview of drought and heat-induced tree mortality reveals emerging climate change risks for forests. *Forest Ecology and Management*, 259, 660–684.
- ARMESTO, J.J., ROZZI, R., SMITH-RAMIREZ, C. & ARROYO, M.T.K. (1998) Conservation targets in South American temperate forests. *Science*, 282, 1271–1272.
- BALDWIN, H., BARSTOW, M. & RIVERS, M. (2018) *The Red List of Nothofagus*. Botanic Gardens Conservation International, Richmond, UK.
- BANNISTER, J.R., VIDAL, O.J., TENEB, E. & SANDOVAL, V. (2012) Latitudinal patterns and regionalization of plant diversity along a

- 4270-km gradient in continental Chile: patterns of plant diversity in Chile. *Austral Ecology*, 37, 500–509.
- BARSTOW, M., BALDWIN, H., RIVERS, M. & ECHEVERRÍA, C. (2017) *Nothofagus alessandrii*. In *The IUCN Red List of Threatened Species 2017*. [dx.doi.org/10.2305/IUCN.UK.2020-3.RLTS.T32033A177350927.en](https://doi.org/10.2305/IUCN.UK.2020-3.RLTS.T32033A177350927.en) [accessed 3 February 2021].
- BECK, H.E., ZIMMERMANN, N.E., MCVICAR, T.R., VERGOPOLAN, N., BERG, A. & WOOD, E.F. (2018) Present and future Köppen–Geiger climate classification maps at 1-km resolution. *Scientific Data*, 5, 180214.
- BOWMAN, D.M.J.S., MOREIRA-MUNOZ, A., KOLDEN, C.A., CHÁVEZ, R.O., MUÑOZ, A.A., SALINAS, F. et al. (2018) Human–environmental drivers and impacts of the globally extreme 2017 Chilean fires. *Ambio*, 48, 350–362.
- BOWMAN, D.M.J.S., MURPHY, B.P., NEYLAND, D.L.J., WILLIAMSON, G.J. & PRIOR, L.D. (2014) Abrupt fire regime change may cause landscape-wide loss of mature obligate seeder forests. *Global Change Biology*, 20, 1008–1015.
- BREIMAN, L. (2001) Random forests. *Machine Learning*, 45, 5–32.
- BUSTAMANTE, R.O. & CASTOR, C. (1998) The decline of an endangered temperate ecosystem: the rui (Nothofagus alessandrii) forest in central Chile. *Biodiversity and Conservation*, 7, 1607–1626.
- BUSTAMANTE, R.O., SEREY, I.A. & PICKETT, S.T.A. (2003) Forest fragmentation, plant regeneration and invasion processes across edges in central Chile. In *How Landscapes Change* (eds G.A. Bradshaw & P.A. Marquet), pp. 145–160. Springer, Berlin, Germany.
- CARVAJAL, M. & ALANIZ, A. (2019) Incendios forestales en Chile central en el siglo XXI: impacto en los remanentes de vegetación nativa según categorización de amenaza y recuperación de cobertura. In *Biodiversidad y Conservación de los Bosques Costeros de Chile* (eds C. Smith-Ramírez & F.A. Squeo), pp. 487–504. Universidad de los Lagos, Osorno, Chile.
- CÓBAR-CARRANZA, A.J., GARCÍA, R.A., PAUCHARD, A. & PEÑA, E. (2014) Effect of *Pinus contorta* invasion on forest fuel properties and its potential implications on the fire regime of *Araucaria araucana* and *Nothofagus antarctica* forests. *Biological Invasions*, 16, 2273–2291.
- COCHRANE, M.A. & LAURANCE, W.F. (2008) Effect synergisms among fire, land use, and climate change in the Amazon. *Ambio*, 37, 522–527.
- CONRAD, O., BECHTEL, B., BOCK, M., DIETRICH, H., FISCHER, E., GERLITZ, L. et al. (2015) *System for Automated Geoscientific Analyses (SAGA) v. 2.1.4*. *Geoscientific Model Development*, 8, 1991–2007.
- DONOSO, C. (1996) Ecology of *Nothofagus* forests in central Chile. In *The Ecology and Biogeography of Nothofagus Forests* (eds T.T. Veblen, R.S. Hill & J. Hill), pp. 271–291. Yale University Press, New Haven, USA.
- DONOSO, C. & LANDAETA, E. (1983) Rui (Nothofagus alessandrii), a threatened Chilean tree species. *Environmental Conservation*, 10, 159–162.
- DONOSO, C. & LARA, A. (1996) Utilización de los bosques nativos en Chile: pasado, presente, futuro. In *Ecología de los Bosques Nativos de Chile* (eds J.J. Armesto, M.T. Kalin & C. Villagrán), pp. 363–387. Editorial Universitaria, Santiago, Chile.
- ECHEVERRÍA, C., COOMES, D., SALAS, J., REY-BENAYAS, J.M., LARA, A. & NEWTON, A. (2006) Rapid deforestation and fragmentation of Chilean temperate forests. *Biological Conservation*, 130, 481–494.
- FAIRMAN, T.A., NITSCHKE, C.R. & BENNETT, L.T. (2015) Too much, too soon? A review of the effects of increasing wildfire frequency on tree mortality and regeneration in temperate eucalypt forests. *International Journal of Wildland Fire*, 25, 831–848.
- FARJON, A. (2013) *Pinus radiata*. In *The IUCN Red List of Threatened Species 2013*. [dx.doi.org/10.2305/IUCN.UK.2013-1.RLTS.T42408A2977955.en](https://doi.org/10.2305/IUCN.UK.2013-1.RLTS.T42408A2977955.en) [accessed 11 January 2022].
- FASSNACHT, F.E., SCHMIDT-RIESE, E., KATTENBORN, T. & HERNÁNDEZ, J. (2021) Explaining Sentinel 2-based dNBR and RdNBR variability with reference data from the bird's eye (UAS) perspective. *International Journal of Applied Earth Observation and Geoinformation*, 95, 102262.
- FERNÁNDEZ-MANSO, A., FERNÁNDEZ-MANSO, O. & QUINTANO, C. (2016) SENTINEL-2A red-edge spectral indices suitability for discriminating burn severity. *International Journal of Applied Earth Observation and Geoinformation*, 50, 170–175.
- GAERTNER, M., BIGGS, R., BEEST, M.T., HUI, C., MOLOFSKY, J. & RICHARDSON, D.M. (2014) Invasive plants as drivers of regime shifts: identifying high-priority invaders that alter feedback relationships. *Diversity and Distributions*, 20, 733–744.
- GARCÍA, R.A., ENGLER, M.L., PEÑA, E., POLLNAC, F.W. & PAUCHARD, A. (2015) Fuel characteristics of the invasive shrub *Teline monspessulana* (L.) K. Koch. *International Journal of Wildland Fire*, 24, 372–379.
- GARREAU, R.D., ALVAREZ-GARRETON, C., BARICHIVICH, J., BOISIER, J.P., CHRISTIE, D., GALLEGUILLOS, M. et al. (2017) The 2010–2015 megadrought in central Chile: impacts on regional hydroclimate and vegetation. *Hydrology and Earth System Sciences*, 21, 6307–6327.
- GONZÁLEZ, M.E., BECERRA-RODAS, C., LARA, A. & GALLEGUILLOS, M. (2019) Post-fire response of the *Nothofagus alessandrii* forests in the Maule region, Chile. Presented at *Annual Meeting of the Ecological Society of Chile*, Valdivia, Chile.
- GONZÁLEZ, M.E., GÓMEZ-GONZÁLEZ, S., LARA, A., GARREAU, R. & DÍAZ-HORMAZÁBAL, I. (2018) The 2010–2015 megadrought and its influence on the fire regime in central and south-central Chile. *Ecosphere*, 9, e02300.
- GONZÁLEZ, M.E., MUÑOZ, A., SIBOLD, J., RIQUELME, T. & RODRIGUEZ, C. (2021) Change in fire regime and its positive feedback in *Araucaria araucana* forests: anthropogenic and climate influences. Presented at *XXVI International Congress of Geography*, Valparaíso, Chile.
- GONZÁLEZ, M.E., MUÑOZ, A.A., GONZÁLEZ-REYES, A., CHRISTIE, D.A. & SIBOLD, J. (2020) Fire history in Andean *Araucaria–Nothofagus* forests: coupled influences of past human land-use and climate on fire regimes in northwest Patagonia. *International Journal of Wildland Fire*, 29, 649–660.
- GONZÁLEZ, M.E., BECERRA-RODAS, C., LARA, A. & LITTLE, C. (2022) La influencia del fuego en la dinámica de los bosques de *Nothofagus alessandrii*. In *Los bosques relictos de Rui: Ecología, Biodiversidad, Conservación y Restauración* (ed. J. San Martín), pp. 417–430. Editorial El Sur Impresores, Talcahuano, Chile.
- GREZ, A.A., BUSTAMANTE, R., SIMONETTI, J. & FAHRIG, L. (1998) Landscape ecology, deforestation, and forest fragmentation: the case of the rui forest in Chile. In *Landscape Ecology as a Tool for Sustainable Development in Latin America* (eds E. Salinas-Chávez & J. Middleton), pp. 1–26. Editorial Universitaria, Santiago, Chile.
- HECHENLEITNER, P., GARDNER, M.F., THOMAS, P., ECHEVERRÍA, C., ESCOBAR, B., BROWNLESS, P. & MARTÍNEZ, C. (2005) *Las Plantas Amenazadas del Centro-Sur de Chile. Distribución, Conservación y Propagación*. Universidad Austral de Chile y Real Jardín Botánico de Edimburgo, Valdivia, Chile.
- HEILMAYR, R., ECHEVERRÍA, C., FUENTES, R. & LAMBIN, E.F. (2016) A plantation-dominated forest transition in Chile. *Applied Geography*, 75, 71–82.
- IUCN (2018) *Threats Classification Scheme* (Version 3.2). The IUCN Red List of Threatened Species. [iucnredlist.org/resources/threat-classification-scheme](https://www.iucnredlist.org/resources/threat-classification-scheme) [accessed 3 February 2021].

- KATTENBORN, T., LOPATIN, J., FÖRSTER, M., BRAUN, A.C. & FASSNACHT, F.E. (2019) UAV data as alternative to field sampling to map woody invasive species based on combined Sentinel-1 and Sentinel-2 data. *Remote Sensing of Environment*, 227, 61–73.
- KEITH, D.A., RODRÍGUEZ, J.P., BROOKS, T.M., BURGMAN, M.A., BARROW, E.G., BLAND, L. & SPALDING, M.D. (2015) The IUCN Red List of ecosystems: motivations, challenges, and applications. *Conservation Letters*, 8, 214–226.
- KENNEDY, R.E., YANG, Z., GORELICK, N., BRAATEN, J., CAVALCANTE, L., COHEN, W.B. & HEALEY, S. (2018) Implementation of the LandTrendr algorithm on Google Earth engine. *Remote Sensing*, 10, 691.
- KEY, C.H. & BENSON, N.C. (2006) *Landscape Assessment: Sampling and Analysis Methods*. General Technical Report. USDA Forest Service, Washington, DC, USA.
- KITZBERGER, T., PERRY, G., PARITSIS, J., GOWDA, J., TEPLEY, A., HOLZ, A. & VEBLEN, T. (2016) Fire–vegetation feedbacks and alternative states: common mechanisms of temperate forest vulnerability to fire in southern South America and New Zealand. *New Zealand Journal of Botany*, 54, 247–272.
- LANGDON, B., PAUCHARD, A. & AGUAYO, M. (2010) *Pinus contorta* invasion in the Chilean Patagonia: local patterns in a global context. *Biological Invasions*, 12, 3961–3971.
- LARA, A., DONOSO, C. & ARAVENA, J.C. (1996) La conservación del bosque nativo de Chile: problemas y desafíos. In *Ecología de los bosques nativos de Chile* (eds J.J. Armesto, M.T. Kalin & C. Villagrán), pp. 335–362. Editorial Universitaria, Santiago, Chile.
- LEAL, C. (2020) *Composición y Estructura del Bosque Maulino Costero Posterior al Incendio de 'Las Máquinas' 2017*. Memoria Título Profesional de Ingeniera en Recursos Naturales Renovables, Universidad de Chile, Santiago, Chile.
- LEE, J.S., JURKEVICH, L., DEWAELE, P., WAMBACQ, P. & OOSTERLINCK, A. (1994) Speckle filtering of synthetic aperture radar images: a review. *Remote Sensing Reviews*, 8, 313–340.
- LINDENMAYER, D.B. (2012) Land use intensification in natural forest setting. In *Land Use Intensification: Effects on Agriculture, Biodiversity and Ecological Processes* (eds S. Cunningham, A. Young & D. Lindenmayer), pp. 113–121. CSIRO Publishing, Clayton, Australia.
- LINDENMAYER, D.B., HOBBS, R.J., LIKENS, G.E., KREBS, C.J. & BANKS, S.C. (2011) Newly discovered landscape traps produce regime shifts in wet forests. *Proceedings of the National Academy of Sciences of the United States of America*, 108, 15887–15891.
- LINDENMAYER, D.B., HUNTER, M.L., BURTON, P.J. & GIBBONS, P. (2009) Effects of logging on fire regimes in moist forests. *Conservation Letters*, 2, 271–277.
- MALLINIS, G., MITSOPOULOS, I. & CHRYSAFI, I. (2018) Evaluating and comparing Sentinel 2A and Landsat-8 Operational Land Imager (OLI) spectral indices for estimating fire severity in a Mediterranean pine ecosystem of Greece. *GIScience & Remote Sensing*, 55, 1–18.
- MCWETHY, D.B., PAUCHARD, A., GARCÍA, R.A., HOLZ, A., GONZÁLEZ, M.E., VEBLEN, T.T. et al. (2018) Landscape drivers of recent fire activity (2001–2017) in south-central Chile. *PLOS ONE*, 13, e0201195.
- MIRANDA, A., ALTAMIRANO, A., CAYUELA, L., LARA, A. & GONZÁLEZ, M. (2016) Native forest loss in the Chilean biodiversity hotspot: revealing the evidence. *Regional Environmental Change*, 17, 285–297.
- MIRANDA, A., LARA, A., ALTAMIRANO, A., DI BELLA, C., GONZÁLEZ, M.E. & JULIO CAMARERO, J. (2020) Forest browning trends in response to drought in a highly threatened Mediterranean landscape of South America. *Ecological Indicators*, 115, 106401.
- MMA (2021) *Clasificación de Especies – Clasificación Según Estado de Conservación*. clasificacionespecies.mma.gob.cl [accessed 4 March 2021].
- MYERS, N., MITTERMEIER, R.A., MITTERMEIER, C.G., DA FONSECA, G.A.B. & KENT, J. (2000) Biodiversity hotspots for conservation priorities. *Nature*, 403, 853–858.
- ODION, D.C., FROST, E.J., STRITTHOLT, J.R., JIANG, H., DELLASALA, D.A. & MORITZ, M.A. (2004) Patterns of fire severity and forest conditions in the western Klamath Mountains, California. *Conservation Biology*, 18, 927–936.
- PAUCHARD, A., ESCUDERO, A., GARCÍA, R.A., CRUZ, M., LANGDON, B., CAVIERES, L.A. & ESQUIVEL, J. (2016) Pine invasions in treeless environments: dispersal overruns microsite heterogeneity. *Ecology and Evolution*, 6, 447–459.
- PAUCHARD, A., GARCÍA, R., LANGDON, B. & NUÑEZ, M. (2014) Invasiones de plantas en ecosistemas forestales: bosques y praderas invadidas. In *Ecología Forestal* (eds C. Donoso, M.E. González & A. Lara), pp. 673–691. Editorial Universidad Austral de Chile, Valdivia, Chile.
- PEREIRA, H., LEADLEY, P., PROENÇA, V., ALKEMADE, R., SCHARLEMANN, J., FERNANDEZ, J. et al. (2010) Scenarios for global biodiversity in the 21st century. *Science*, 330, 1496–1501.
- PLISCOFF, P. & FUENTES-CASTILLO, T. (2011) Representativeness of terrestrial ecosystems in Chile's protected area system. *Environmental Conservation*, 38, 303–311.
- RAFFAELE, E., NUÑEZ, M.A., ENESTRÖM, J. & BLACKHALL, M. (2016) Fire as mediator of pine invasion: evidence from Patagonia, Argentina. *Biological Invasions*, 18, 597–601.
- RANGHETTI, L., BOSCHETTI, M., NUTINI, F. & Busetto, L. (2020) 'senzr': an R toolbox for automatically downloading and preprocessing Sentinel-2 satellite data. *Computers & Geosciences*, 139, 104473.
- RICHARDSON, D.M., WILLIAMS, P.A. & HOBBS, R.J. (1994) Pine invasions in the Southern Hemisphere: determinants of spread and invadability. *Journal of Biogeography*, 21, 511–527.
- R CORE TEAM (2020) *R: A Language and Environment for Statistical Computing*. R Foundation for Statistical Computing, Vienna, Austria. R-project.org [accessed 11 January 2022].
- SAN MARTÍN, C. & DONOSO, C. (1996) Estructura florística e impacto antrópico en el bosque maulino de Chile. In *Ecología de los Bosques Nativos de Chile* (eds J.J. Armesto, M.T. Kalin & C. Villagrán), pp. 153–168. Editorial Universitaria, Santiago, Chile.
- SAN MARTÍN, J. & SEPÚLVEDA, C. (2002) *Diagnóstico del estado actual de los fragmentos de Nothofagus alessandrii, 'Ruil', Fagaceae (= Nothofagaceae), de la Región del Maule, Chile central*. Universidad de Talca, Talca, Chile.
- SAN MARTÍN, J., FIGUEROA, H. & RAMÍREZ, C. (1984) Fitosociología de los bosques de ruil (*Nothofagus alessandrii* Espinosa) en Chile central. *Revista Chilena de Historia Natural*, 57, 171–200.
- SAN MARTÍN, J., SANTELICES, R. & HENRÍQUEZ, R. (2013) *Nothofagus alessandrii* Espinosa, Ruil. Familia: Nothofagaceae. In *Las Especies Arbóreas de los Bosques Templados de Chile y Argentina: Autocología* (ed. C. Donoso), pp. 391–401. Marisa Cuneo, Valdivia, Chile.
- SANTELICES, R., DRAKE, F., MENA, C., ORDENES, R. & NAVARRO-CERRILLO, R.M. (2012) Current and potential distribution areas for *Nothofagus alessandrii*, an endangered tree species from central Chile. *International Journal of Agriculture and Natural Resources*, 39, 521–531.
- SANTELICES, R., ESPINOZA, S., CABRERA, A., MAGNI, C. & CABRERA ARIZA, A. (2018) Gestión de riesgo como herramienta para la conservación de los bosques de *Nothofagus alessandrii*, una especie en peligro de extinción de Chile central. *Inter ciencia*, 43, 144–150.

- SEIDL, R., THOM, D., KAUTZ, M., MARTÍN-BENITO, D., PELTONIEMI, M., VACCHIANO, G. et al. (2017) Forest disturbances under climate change. *Nature Climate Change*, 7, 395–402.
- SIMBERLOFF, D., NUÑEZ, M.A., LEDGARD, N.J., PAUCHARD, A., RICHARDSON, D.M., SARASOLA, M. et al. (2009) Spread and impact of introduced conifers in South America: lessons from other Southern Hemisphere regions: spread and impact of introduced conifers. *Austral Ecology*, 35, 489–504.
- TAYLOR, K., MAXWELL, B., MCWETHY, D., PAUCHARD, A., NUÑEZ, M. & WHITLOCK, C. (2016) *Pinus contorta* invasions increase wildfire fuel loads and may create a positive feedback with fire. *Ecology*, 98, 678–687.
- TEPLEY, A.J., THOMPSON, J.R., EPSTEIN H.E. & ANDERSON-TEIXEIRA, K.J. (2017) Vulnerability to forest loss through altered postfire recovery dynamics in a warming climate in the Klamath Mountains. *Global Change Biology*, 23, 4117–4132.
- VALENCIA, D., SAAVEDRA, J., BRULL, J. & SANTELICES, R. (2018) Severidad del daño causado por los incendios forestales en los bosques remanentes de *Nothofagus alessandrii* Espinosa en la Región del Maule de Chile. *Gayana Botánica*, 75, 531–534.
- VAN NIEUWSTADT, M.G., SHIEL, D. & KARTAWINATA, D. (2001) The ecological consequences of logging in the burned forests of east Kalimantan, Indonesia. *Conservation Biology*, 15, 1183–1186.
- VEBLEN, T.T., HOLZ, A., PARITSIS, J., RAFFAELE, E., KITZBERGER, T. & BLACKHALL, M. (2011) Adapting to global environmental change in Patagonia: what role for disturbance ecology?: Disturbance ecology in Patagonia. *Austral Ecology*, 36, 891–903.
- WILLIAMS, M. & WARDLE, G. (2007) The spatial pattern of invading *Pinus radiata*. *Proceedings – Linnean Society of New South Wales*, 128, 111–122.
- ZHAO, Y., FENG, D., YU, L., WANG, X., CHEN, Y., BAI, Y. et al. (2016) Detailed dynamic land cover mapping of Chile: accuracy improvement by integrating multi-temporal data. *Remote Sensing of Environment*, 183, 170–185.