

Sociologia Ruralis

Journal of the European Society for Rural Sociology

Edited by Henk de Haan

Sociologia Ruralis is the journal of the European Society for Rural Sociology, and publishes theoretical and empirical papers from the social sciences about a wide range of rural problems. Its main aim is to reflect the diversity of European rural social science research.

ORDER FORM

Sociologia Ruralis

Subscription Rates, Volume 38/1998

ISSN 0038-0199

Published in: April, August and December

Institutional Rates, £86.00 (UK-Europe), \$143.00 (N. America), £86.00 (Rest of World)

ESRS Ordinary Members, £46.00 (UK-Europe), \$76.00 (N. America), £46.00 (Rest of World)

ESRS Association Members, £28.00 (UK-Europe), \$46.00 (N. America), £28.00 (Rest of World)

ESRS Student Members, £19.00 (UK-Europe), \$32.00 (N. America), £19.00 (Rest of World)

ESRS Eastern Europe Individual Members, £15.00

- Please enter my subscription/send me a sample copy
- I enclose a cheque/money order payable to Blackwell Publishers
- Please charge my American Express/Diners Club/Mastercard/Visa account

Card Number Expiry Date

Signature Date

Name

Address

..... Postcode

email

Payment must accompany orders

Please return this form to:

Journals Marketing, Blackwell Publishers, 108 Cowley Road, Oxford, OX4 1JF, UK.

Tel: +44 (0)1865 244083 Or to:

Journals Marketing, SORU, Blackwell Publishers, 350 Main Street, Malden, MA 02148, USA.

Tel: +1 781 388 8200

SPECIAL OFFER for 1998

Electronic access is included in the institutional subscription to the print edition.



For more information, or to order a free sample copy, visit our website

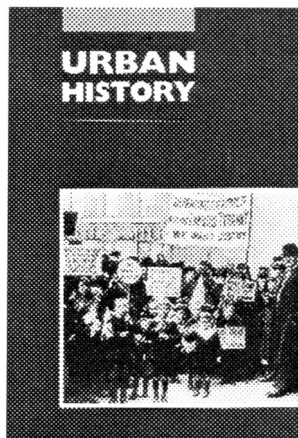
<http://www.blackwellpublishers.co.uk>

Cambridge Journals

Urban History

Urban History occupies a central place in historical scholarship. Contents include research based articles, historiographical and methodological surveys, and surveys of urban development in individual countries.

As part of a major contribution to research, *Urban History* provides detailed bibliographical references for an average of 1000 classified and indexed items, culled from monographs and edited collections, and from approximately 560 periodicals. Cross-referenced by town and classified thematically, these bibliographical entries offer a convenient method by which, annually, to update reading lists or embark upon new research projects.



Subscriptions

Volume 25 in 1998: May, August and December

£66 for institutions; £34 for individuals; prices include delivery by air. ISSN 0963-9268

Take a closer look... free

Please send me a free sample copy of **Urban History**

name _____

address _____

Send coupon to:

Journals Marketing, Cambridge University Press,
The Edinburgh Building, Cambridge, CB2 2RU, UK

to contact the Journals Marketing Department

tel +44 (0) 1223 325806 fax +44 (0) 1223 315052 email journals_marketing@cup.cam.ac.uk

 **CAMBRIDGE**
UNIVERSITY PRESS

The Edinburgh Building, Cambridge, CB2 2RU, UK
PHONE +44 (0) 1223 325806 FAX +44 (0) 1223 315052
email: journals_marketing@cup.cam.ac.uk
www <http://www.cup.cam.ac.uk>

LABOUR/LE TRAVAIL

Journal of Canadian Labour Studies



Labour/Le Travail, edited by Bryan D. Palmer, focuses on articles on working-class history, industrial sociology, labour economics and labour relations. Primarily interested in articles providing a historical perspective on workers in Canada, the semi-annual journal also publishes documents, conference reports, review essays and reviews.

Vol. 41, Spring 1998

Cynthia Comacchio: Mechanomorphosis: Science, Management, and "Human Machinery" in Industrial Canada, 1900-1945.

Hugh Grant: Solving the Labour Problem at Imperial Oil: Welfare Capitalism in the Canadian Petroleum Industry, 1918-1929.

Susanne Klausen: The Plywood Girls: Women and Gender Ideology at the Port Alberni Plywood Plant, 1942-1991.

Rob Kristofferson: The Past is at Our Feet: The Worker's City Project in Hamilton, Ontario.

Vol. 42, Fall 1998

Todd McCallum: "Not a Sex Question?" The One Big Union and the Politics of Radical Manhood.

Mark Leier: Portrait of a Labour Spy: The Case of Robert Raglan Gosden, 1882-1961.

Miriam Wright: Young Men and Technology: Government Attempts to Create a "Modern" Fisheries Workforce in Newfoundland, 1949-1970.

Annual Subscription (2 Issues): Individuals, \$25.00; Institutions, \$35.00; Students, Retired/Unemployed \$15.00. Outside Canada, Individuals, \$30.00 US funds; Institutions, \$50.00 US funds; Students, Retired/Unemployed, \$25.00 US funds. Orders: Canadian Committee on Labour History, Department of History, FM 2005, Memorial University of Newfoundland, St. John's, NF A1C 5S7 CANADA
email: cclh@morgan.ucs.mun.ca
<http://www.mun.ca/cclh>

IRISH REBEL and UNION LEADER: Patrick Lenihan

Edited by Gil Levine and Lorne Brown.

This biography chronicles a lifetime of rebellion, protest and organization against the backdrop of the major economic, social and political struggles of this century.

c.180 pp

Paper [Fall 1998]



COLD WARRIOR: C.S. Jackson and the United Electrical Workers, by Doug Smith.

Biography of Clarence Shirley Jackson, the most prominent and successful Communist trade union leader of the mid-20th century in Canada.

274 pp

Paper \$24.95

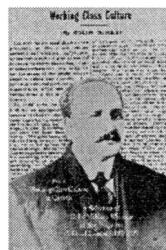


**FOR A WORKING-CLASS CULTURE IN CANADA:
A Selection of Colin McKay's Writings on Sociology
and Political Economy, 1897-1939**

Edited and Annotated by Ian McKay, Researched and Introduced by Lewis Jackson and Ian McKay.

615 pp

Paper \$29.95



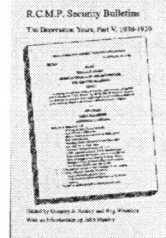
R.C.M.P. SECURITY BULLETINS:

The Depression Years, Part V, 1938-1939

Edited by Gregory S. Kealey and Reg Whitaker, with an Introduction by John Manley.

508 pp

Paper \$29.95



Canadian Committee on Labour History

Send orders to CCLH, c/o History Dept., FM 2005,
Memorial University of Newfoundland, St. John's, NF, Canada A1C 5S7
Tel: (709) 737-2144, Fax: (709) 737-4342
Email: cclh@plato.ucs.mun.ca
<http://www.mun.ca/cclh>

NOTES FOR CONTRIBUTORS

Articles or other materials for publication may be submitted to any one of the editors, whose addresses are given on the inside front cover. Contributors should submit two copies of articles, in double line spacing with reasonable margins, whether typed on A4 paper or computer printed. Articles should normally be no more than 8,000 words, but longer articles will be considered. An *Abstract* of about 150 words should also be supplied. When an article has been accepted for publication, the author is strongly encouraged to send a securely packed backup copy of the final version on computer disk (Apple Macintosh or IBM compatible PC) together with the hard copy typescript, giving details of the wordprocessing software used (Microsoft Word, Wordstar or Word Perfect). However, the publisher reserves the right to typeset material by conventional means if an author's disk proves unsatisfactory. Alternatively a modem service is available. For fuller details please contact one of the editors.

STYLE

Contributors should aim for a style that is accessible to readers in related disciplines. Masculine forms used as universals, e.g. 'the archaeologist and his aspirations', should be avoided. Articles may be in either English or American spelling.

CITATION

Contributors may follow either of the standard conventions:

(a) in-text citations of sources; (b) citation in footnotes.

(a) *In-text citation.* Give author's surname, date of publication and page references (if any) in parentheses in the body of the text, e.g. '(Falassi, 1980b: 114)'. Where a second or subsequent work by a particular author in the same year is cited, references should be distinguished by letters (a, b, c, etc.) placed after the date. A complete list of references cited, arranged alphabetically by authors' surname, should be typed double-spaced at the end of the article in the form:

Falassi, A. 1980b. *Folklore by the Fireside: Text and Context of the Tuscan Veglia* (Austin, Texas).

Give place of publication, but not the publisher. Titles of books, articles and journals should be in the form of the examples in these Notes.

(b) *Citation in footnotes.* References should be given in notes, numbered consecutively through the typescript with raised numbers. Type the notes double-spaced on separate pages at the end of the article. Full publication details should be given at first mention, a short form thereafter:

John Barrell, *The Dark Side of the Landscape: The Rural Poor in English Painting, 1730–1840* (Cambridge, 1980), p. 89.

D. Kramer (ed.), *Critical Approaches to Hardy's Fiction* (London, 1979), pp. 17–18.

B. Reay, 'The last rising of the agricultural labourers: the battle in Bossenden Wood, 1838', *History Workshop* 26 (1988), 81–2.

Short forms:

Barrell, *Dark Side*, p. 90.

Kramer (ed.), *Hardy's Fiction*, pp. 175–6.

Reay, 'The last rising', p. 82.

QUOTATIONS

Quotations should be in single inverted commas, with double used only for quotations within quotations. Quotations of more than about five lines should be set off from the text and indented. Type double-spaced.

TABLES AND ILLUSTRATIONS

Tables, graphs, maps and line drawings should be provided on separate sheets. Guidelines on presentation are included in the more detailed Notes for Contributors available from the editors. Contributors should provide full details of the illustration source and obtain permission to reproduce copyright material. Any necessary acknowledgement should be included in the caption.

PROOFS

Contributors will receive a proof of their article for correction of any printer's errors and any essential factual errors.

OFFPRINTS

Twenty-five offprints of each contribution will be supplied, to be sent to the first named author in the case of jointly authored contributions. Further offprints may be purchased if ordered at first proof stage. Contributors may also purchase the issue in which their contribution appears at a preferential rate, on application to the publisher.

Rural History

Economy, Society, Culture

VOLUME 9 NUMBER 2 OCTOBER 1998

CONTENTS

Jose Antonio Mateos Royo	The Making of a New Landscape: Town Councils and Water in the Kingdom of Aragon during the Sixteenth Century	123
J.V. Beckett, M.E. Turner and Ben Cowell	Farming through Enclosure	141
Christine S. Hallas	Yeomen and Peasants? Landownership Patterns in the North Yorkshire Pennines c. 1770–1900	157
Matthew Cragoe	The Anatomy of an Eviction Campaign: The General Election of 1868 in Wales and its Aftermath	177
Jim Phillips and Michael French	The Pure Beer Campaign and Arsenic Poisoning, 1896–1903	195
Paul Halstead	Ask the Fellows who Lop the Hay: Leaf-Fodder in the Mountains of Northwest Greece	211
Note		235
Reviews		237

CAMBRIDGE
UNIVERSITY PRESS



0956-7933(199810)9:2;1-Q