



# THE BRITISH JOURNAL OF PSYCHIATRY

July 1991

Vol. 159

*Anniversary Issue*

## Lectures

- Psychiatrists and citizens. *J. L. T. Birley*  
The holocaust and German psychiatry. *J. Meyer-Lindenberg*  
The impact of political change in Eastern Europe on behavioural sciences and psychiatry. *T. Tomov*  
The human brain and political behaviour. *H. Freeman*

## Papers

- The evolution of the British Journal of Psychiatry. *H. R. Rollin*  
The history of 'nervous disorders' from 1600 to 1840, and a comparison with modern views. *E. Hare*  
The founding of psychiatric nurse training and its aftermath. *P. W. Nolan*  
Twentieth-century influences on the development in Britain of services for child and adolescent psychiatry. *C. Wardle*  
The Surrey County Lunatic Asylum (Springfield): early years in the development of an institution. *I. Lodge Patch*  
Measurement in psychiatry. *R. P. Snaith*  
Drinking, thirst and water intoxication. *J. L. Crammer*  
Pathways to psychiatric care in South Manchester. *R. Gater and D. Goldberg*  
Affects as central organising and integrating factors: a new psychosocial/biological model of the psyche. *L. Ciompi*

- Personality as a vulnerability factor to depression. *P. Boyce, G. Parker, B. Barnett, M. Cooney and F. Smith* 106  
Early sexual abuse and clinical depression in adult life. *A. Bifulco, G. W. Brown and Z. Adler* 115  
Long-term lithium treatment outcome of bipolar disorder. *R. A. O'Connell, J. A. Mayo, L. Flatow, B. Cuthbertson and B. E. O'Brien* 123  
Correlation of negative symptoms in schizophrenia with frontal lobe parameters on magnetic resonance imaging. *P. Williamson, D. Pelz, H. Merskey, S. Morrison and P. Conlon* 130  
Symptoms of post-traumatic stress disorder in Falklands veterans five years after the conflict. *L. S. O'Brien and S. J. Hughes* 135  
**The Current Literature**  
Case management. *F. Holloway, E. K. McLean and J. A. Robertson* 142  
**Point of View**  
Psychotherapy 2000. Some predictions for the coming decade. *J. Holmes* 149  
**Columns**  
Correspondence 156  
A hundred years ago. *Researched by H. Rollin* 166

*Continued inside*

150 PSYCHIATRIC CLINIC (JUL 3 1 1991)  
NEW YORK HOSPITAL

Published Not to be taken from Library Royal College of Psychiatrists

ISSN 0007-1250

Skies surrender to  
an upward glance  
raising heads  
lifting moods



75 YEARS

OF CARE

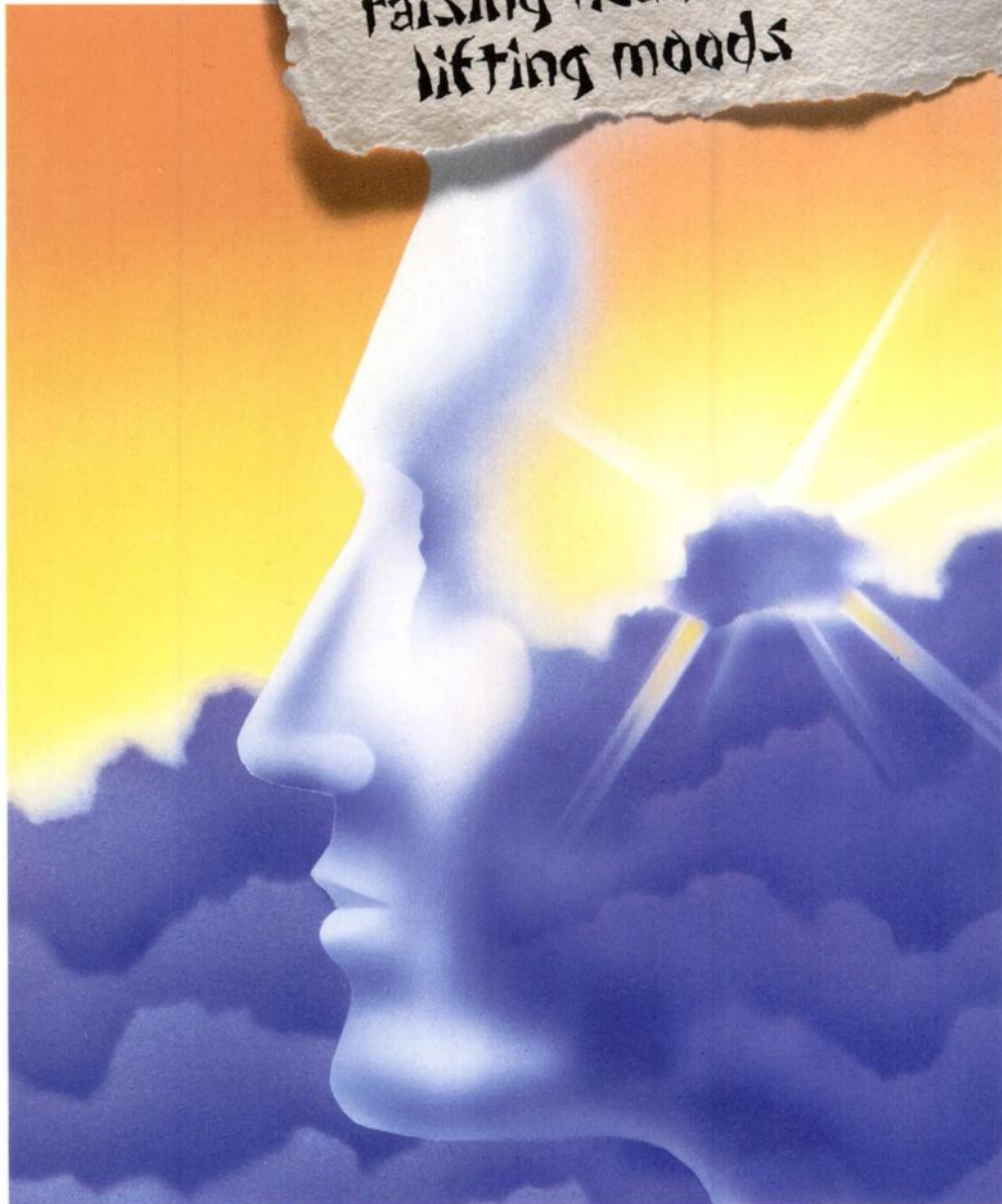
Lundbeck

FACING

THE

FUTURE

TOGETHER



DEPOT  
**DEPIXOL**<sup>®</sup>  
cis(Z)-flupenthixol decanoate

For the withdrawn schizophrenic

Further information is available on request from: Lundbeck Ltd, Lundbeck House, Hastings Street, Luton, Beds LU1 5BE



# The British Journal of Psychiatry

July 1991, Volume 159

Published monthly. Founded in 1853 as the *Asylum Journal* and known as the *Journal of Mental Science* from 1858 to 1963

Editor: Hugh Freeman

---

## Senior Associate Editor

Alan Kerr

## Associate Editors

Dora Black, Sidney Crown,  
Julian Leff, Sir Martin Roth,  
Peter Tyrer

## Assistant Editors

Mohammed Abou-Saleh, German Berrios,  
Peter Bruggen, Patricia Casey, Alexander  
Kellam, Stuart Montgomery, Catherine  
Oppenheimer, Ian Pullen, Rosalind  
Ramsay, Henry Rollin, Oliver Russell,  
George Stein, Digby Tantam,  
Greg Wilkinson, Stephen Wilson

## Publications Manager

Dave Jago

## Scientific Editor

Ralph Footring

## Bulletin Manager

Elaine Millen

## Assistant Scientific Editor

Katharine Blanford

## Editorial Assistants

Judy Ashworth, Christina Connolly

---

US Mailing Agents: Mercury Airfreight International Ltd. Inc.,  
2323 Randolph Avenue, Avenel, NJ 07001. Second class postage  
paid at Rahway, NJ.

Back issues published before 1988 may be purchased from William  
Dawson & Sons Ltd, Cannon House, Folkestone, Kent, England  
(tel. 0303-850-101).

©™ The paper used in this publication meets the minimum  
requirements of American National Standard for Information  
Sciences—Permanence of Paper for Printed Library Materials.  
ANSI Z39. 48-1984.

Printed by Henry Ling Ltd, The Dorset Press,  
23 High East Street, Dorchester, Dorset DT1 1HD

©1991 The Royal College of Psychiatrists

---

## Contents continued from front cover

Book reviews	167
<i>American Journal of Psychiatry</i> (contents)	172
<i>The Journal of Nervous and Mental Disease</i> (contents) facing	172

---

The *British Journal of Psychiatry* is published monthly under the auspices of the Royal College of Psychiatrists. The *Journal* publishes original work in all fields of psychiatry. All communications, including manuscripts for publication, should be sent to The Editor, *British Journal of Psychiatry*, 17 Belgrave Square, London SW1X 8PG.

Full details on the submission of articles are given on p. 591 of volume 158, and these should be referred to before the preparation of material for publication.

Two copies of the manuscript should be submitted and the author should retain a copy. Articles must be typed on one side of the paper only, double spaced with wide margins.

Contributions are accepted for publication on the condition that their substance has not been published or submitted for publication elsewhere. The *Journal* does not hold itself responsible for statements made by contributors. Unless so stated, material in the *Journal* does not necessarily reflect the views of the Editor or the Royal College of Psychiatrists.

Published articles become the property of the *Journal* and can be published elsewhere, in full or in part, only with the Editor's written permission.

The names of the authors should appear on the title-page, and their names, degrees, affiliations and full addresses at the end of the paper. A summary should be given at the beginning of the article. References should be listed alphabetically at the end of the paper, the titles of journals being given in full. Reference lists not in *Journal* style will be returned to the author for correction. The text reference should be in the form '(Smith, 1971)' or 'Smith (1971) showed that . . .'. Brief reports should cite a maximum of 10 references. 'Personal communications' need written authorisation. No other citation of unpublished work is permissible.

Terms or abbreviations which might not be understood by the average reader should be explained at first occurrence.

# Consultant Psychogeriatricians

## Australia

The Office of Psychiatric Services in Victoria seeks 3 Consultant Psychogeriatricians to help provide a community-based service which is genuinely responsive to the needs of elderly people and their families. Two of the posts are based in Melbourne, one of Australia's most beautiful and exciting cities and the third is located in country Victoria, close to forests, lakes and mountains. You will contribute to patient care, service development and teaching, and are eligible for University appointments. You will be assisted by junior doctors and have a limited right to private practice.

Dandenong Psychiatric Centre (28 hours per week) serves the south-eastern metropolis and has a community team and specialist nursing home. Frankston Hospital (full-time) serves the Mornington Peninsula and has a new psychogeriatric assessment unit, a community team, cluster home and specialist nursing home. Hobson Park Hospital (full-time) serves southern Victoria and comprises an admission unit, rehabilitation wards and a psychogeriatric extended care ward.

A community team will be established shortly.

You should have specialist qualifications and experience in psychogeriatrics and be eligible for registration as a medical practitioner in the State of Victoria. Salaries range from A\$58,000 plus A\$11,600 allowances to A\$68,000 plus A\$13,600 allowances or pro rata. Removal expenses will be paid.

Write (or phone (613) 552 4600) for further information to Professor D W O'Connor, Heatherton Hospital, Kingston Road, Heatherton, Victoria 3202, Australia. Applications, c.v. and the names of three referees should be sent to the Personnel Manager at the same address by

31 December 1991.

arm52046

# Heatherton

H O S P I T A L

UNIVERSITY OF LONDON

Institute of Psychiatry

### TRAINING COURSE IN COGNITIVE BEHAVIOURAL THERAPY

There will be a training course in Cognitive Behavioural Therapy at the Institute of Psychiatry between 1 February and 31 July 1992. The course starts with a two-day workshop on 30 January and 31 January and thereafter weekly for one half day.

Students will be expected to treat patients under supervision, and will attend a series of academic seminars. Psychiatrists and post-qualification psychologists are likely to be particularly interested, though applicants from other professional disciplines will be considered.

Numbers will be limited.

For further details apply to: **The Registry, Institute of Psychiatry, De Crespigny Park, Denmark Hill, London SE5 8AF.**

Closing date for applications: **20 December 1991.**

### NOTICE TO ADVERTISERS

Applications for advertisement space in  
*The British Journal of Psychiatry*  
should be made to:

**PTM  
PUBLISHERS  
LIMITED**

282 High Street,  
Sutton, Surrey SM1 1PQ  
Telephone: 081-642 0162  
Fax: 081-643 2275