



cambridge.org/ags

G. Bracho-Mujica<sup>1</sup> , P.T. Hayman<sup>2</sup>, V.O. Sadras<sup>2,3</sup> and B. Ostendorf<sup>4</sup> Crops and Soils Research  
Paper

**Cite this article:** Bracho-Mujica G, Hayman PT, Sadras VO, Ostendorf B (2020). A method for simulating risk profiles of wheat yield in data-sparse conditions. *The Journal of Agricultural Science* **158**, 833–844. <https://doi.org/10.1017/S0021859621000253>

Received: 14 October 2020

Revised: 30 January 2021

Accepted: 8 March 2021

First published online: 21 April 2021

**Key words:**

APSIM; Australian grain belt; crop modelling; long-term weather data; cumulative probability distribution grain yield

**Author for correspondence:**

G. Bracho-Mujica,

E-mail: [gennady.brachomujica@uni-goettingen.de](mailto:gennady.brachomujica@uni-goettingen.de)

<sup>1</sup>Tropical Plant Production and Agricultural Systems Modelling (TROPAGS), Georg-August-Universität Göttingen, Grisebachstraße 6, 37077 Göttingen, Germany; <sup>2</sup>South Australian Research and Development Institute (SARDI), Urrbrae, SA 5064, Australia; <sup>3</sup>School of Agriculture, Food and Wine, The University of Adelaide, Adelaide, SA 5005, Australia and <sup>4</sup>School of Biological Sciences, The University of Adelaide, Adelaide, SA 5000, Australia

**Abstract**

Process-based crop models are a robust approach to assess climate impacts on crop productivity and long-term viability of cropping systems. However, these models require high-quality climate data that cannot always be met. To overcome this issue, the current research tested a simple method for scaling daily data and extrapolating long-term risk profiles of modelled crop yields. An extreme situation was tested, in which high-quality weather data was only available at one single location (reference site: Snowtown, South Australia, 33.78°S, 138.21°E), and limited weather data was available for 49 study sites within the Australian grain belt (spanning from 26.67 to 38.02°S of latitude, and 115.44 to 151.85°E of longitude). Daily weather data were perturbed with a delta factor calculated as the difference between averaged climate data from the reference site and the study sites. Risk profiles were built using a step-wise combination of adjustments from the most simple (adjusted series of precipitation only) to the most detailed (adjusted series of precipitation, temperatures and solar radiation), and a variable record length (from 10 to 100 years). The simplest adjustment and shortest record length produced bias of modelled yield grain risk profiles between –10 and 10% in 41% of the sites, which increased to 86% of the study sites with the most detailed adjustment and longest record (100 years). Results indicate that the quality of the extrapolation of risk profiles was more sensitive to the number of adjustments applied rather than the record length per se.

**Introduction**

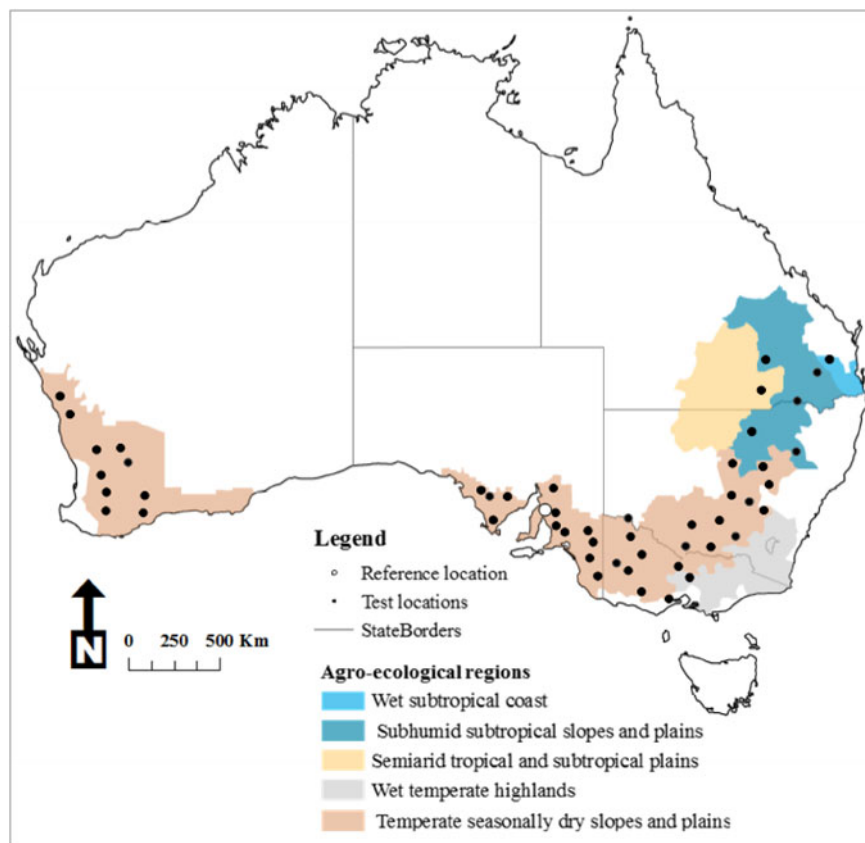
As climate change intensifies, agricultural decision-makers are increasingly interested in the potential impacts such changes will make on crop productivity, and in the level of probability associated with the different impacts. Arguably, the most robust approach for simulating climate impacts on cropping productivity is the use of process-based models. These models account for complex interactions between the climate, soil, genotype and management affecting crop yield (Keating *et al.*, 2003; Stöckle *et al.*, 2003; van Bussel *et al.*, 2011; Grassini *et al.*, 2015; Van Wart *et al.*, 2015). However, meaningful crop model outputs (e.g. crop yield) can only be achieved when the parameters of the model have been appropriately calibrated, crop management options are realistically represented in the simulation, and the input weather data are accurate and reliable (Lamboni *et al.*, 2009; Liddicoat *et al.*, 2012; Grassini *et al.*, 2015). From this list of requirements, the lack of accurate and reliable weather data remains a common problem, particularly in developing countries.

Considerable effort has been devoted to developing protocols for enhancing observed weather data coverage for crop yield-gap analysis, crop yield projections and climate impact assessments (van Ittersum *et al.*, 2013; van Wart *et al.*, 2013; Watson and Challinor, 2013; Grassini *et al.*, 2015; Zhao *et al.*, 2015). There is also an important number of global gridded data sets available, that have been produced using sophisticated methods and validated with a vast number of observations and data derived from remote sensing around the globe (Ruane *et al.*, 2015; Hersbach *et al.*, 2020). However, these data sets cover a limited time period (between 20 and 40 years), and their validity relies on the density of weather stations, on the climate variables measured and record length of the available data, which is spatially highly variable and often low in the tropics, and in remote and rural areas. There is therefore the need to develop methods for reducing the dependency on a dense network of weather stations with high-quality and long-term observations, especially in data-sparse environments.

Regional land-use planning and on-farm management require a solid understanding of the long-term viability of production systems in a variable future climate. In fact, one of the core components of current agricultural decision-support systems is the risk profile – or cumulative probability – of crop yield under different management options (Hunt *et al.*, 2006; Hochman *et al.*, 2009; Hayman *et al.*, 2010b; Hochman and Horan, 2018). The risk profile is particularly useful for reducing climate uncertainty and making better management decisions (Meinke

© The Author(s), 2021. This is an Open Access article, distributed under the terms of the Creative Commons Attribution licence (<http://creativecommons.org/licenses/by/4.0/>), which permits unrestricted re-use, distribution, and reproduction in any medium, provided the original work is properly cited.

**CAMBRIDGE**  
UNIVERSITY PRESS



**Fig. 1.** The Australian grain belt, reference location and test sites considered in this study. Data source: ABARES – BRS (2010).

*et al.*, 1996; Folland and Anderson, 2002; Domsch *et al.*, 2003; Yao *et al.*, 2007; Hayman *et al.*, 2008). Bracho-Mujica *et al.* (2019a) evaluated the dependency of the risk profile on climate record length and found that reliable risk profiles can be generated from short time periods of high-quality data. Furthermore, high-quality long-term rainfall and temperature records can be combined with high-quality temporal data from different locations to produce reliable risk profiles (Bracho-Mujica *et al.*, 2019b). However, in all these studies the averaged climate data used for calculating the adjustment factors covered a long-term period (i.e. >100 years), which opens the question as to the extent to which this method can be used in common situations, where high-quality long-term data are spatially sparse and reliable long-term records to support interpolation or extrapolation are limited.

The goal of this study was to examine the applicability of a simple method of weather data adjustment for climate risk assessment, by testing the effects of short record lengths of averaged climate data on (i) the adjustment factors for precipitation, temperature, and global solar radiation and (ii) on the long-term risk profile of simulated wheat grain yield in the Australian grain belt.

## Materials and methods

### Study area

The current research focuses on wheat crops in the Australian grain belt. This is due to its importance to the Australian economy (Trewin, 2006; Australian Bureau of Statistics, 2020), its vulnerability to climate variability and change (Hammer *et al.*, 1996;

Potgieter *et al.*, 2002) and the availability of one of the best weather data sets suitable for crop modelling (Jones *et al.*, 2009; Trewin, 2013). Previous studies on the assessment and improvement of the method of daily weather data adjustment for modelling risk profiles of simulated wheat yields have been conducted in the same area (Hayman *et al.*, 2010b; Liddicoat *et al.*, 2012; Bracho-Mujica *et al.*, 2019a, 2019b).

A total of 49 wheat-growing test sites within the grain belt were selected (Fig. 1 and Table 1), located in contrasting agro-ecological zones and with high-quality weather data. In addition, one spatial reference site was selected for the current study: Snowtown, in South Australia. The selection was made due to (a) its agricultural importance, (b) its position, located in the middle of the South Australian grain belt, (c) the high-quality long-term weather data required for crop yield simulations are available and (d) it allows for a comparison with previous studies.

Daily precipitation, maximum and minimum temperatures and solar radiation data from these sites were obtained from the SILO patch point database (Scientific Information for Land Owners) (Jeffrey *et al.*, 2001). The period used was 1901–2000, avoiding the bias of the extreme Millennium drought (van Dijk *et al.*, 2013; Verdon-Kidd *et al.*, 2014), which alters the shape of the risk profile.

### Adjustment of daily weather data

Risk profiles were derived from the simulated wheat grain yield in two ways: using actual weather data from each study site, and using adjusted weather data from the reference location. 'Adjusted weather data' refers to daily weather series (for precipitation, maximum and minimum temperatures and global

**Table 1.** Location of the reference site (*italic bold*) and 49 test sites ordered clockwise, and agro-ecological zone, mean growing season precipitation (GSPrecip), seasonality, event-size index ( $\tau$ ), growing season maximum and minimum temperatures (GSMaxTemp and GSMinTemp), and global solar radiation (GSSolar)

Agro-ecological zone <sup>a</sup>	Site	Latitude	Longitude	Altitude (m a.s.l.)	GSPrecip (mm)	Seasonality <sup>b</sup>	$\tau^c$	GSMaxTemp (°C)	GSMinTemp (°C)	GSSolar (MJ/m <sup>2</sup> )
Wet subtropical coast	Kingaroy	26.55 °S	151.85 °E	442	300	0.39	2.7	22.0	7.4	16.7
Semiarid tropical and subtropical plains	St George	28.04 °S	148.58 °E	201	223	0.43	2.7	23.6	9.3	17.0
Sub-Humid subtropical slopes and plains	Roma	26.67 °S	148.79 °E	299	241	0.40	2.6	24.0	8.3	17.5
	Dalby	27.18 °S	151.26 °E	344	270	0.40	2.7	22.8	8.0	16.8
	Goondiwindi	28.55 °S	150.31 °E	217	272	0.45	2.8	22.7	8.8	16.8
	Walgett	30.02 °S	148.12 °E	133	235	0.50	2.8	22.4	8.1	16.2
	Gunnedah	30.98 °S	150.25 °E	285	296	0.48	2.9	21.1	6.9	15.4
Wet temperate highlands	Seymour	37.03 °S	145.15 °E	145	402	0.68	3.5	15.8	5.5	11.7
Temperate seasonally dry slopes and planes	Gilgandra	31.70 °S	148.66 °E	282	293	0.52	2.9	20.0	6.0	15.2
	Nyngan	31.55 °S	147.20 °E	173	222	0.50	2.9	21.2	7.4	15.5
	Wellington	32.56 °S	148.95 °E	305	341	0.55	3.1	19.5	5.6	14.5
	Condobolin	33.08 °S	147.15 °E	220	249	0.56	3.0	19.4	6.7	14.6
	Forbes	33.39 °S	148.01 °E	240	300	0.57	3.1	18.8	6.0	14.1
	Cowra	33.80 °S	148.70 °E	360	354	0.58	3.3	17.9	5.6	13.9
	Moombooldool	34.28 °S	146.57 °E	158	261	0.60	3.1	18.7	6.2	13.7
	Hay	34.49 °S	145.25 °E	104	228	0.63	3.0	19.0	6.5	13.8
	Wagga-Wagga	35.05 °S	147.35 °E	219	334	0.63	3.3	17.1	5.9	13.1
	Oaklands	35.56 °S	146.17 °E	145	285	0.62	3.2	17.8	5.9	13.1
	Deniliquin	35.53 °S	144.97 °E	96	255	0.64	3.2	18.2	6.5	13.3
	Elmore	36.50 °S	144.61 °E	130	309	0.66	3.4	16.8	5.7	12.3
	Teesdale	38.02 °S	144.16 °E	106	321	0.62	3.4	15.6	6.8	10.8
	Lake Bolac	37.71 °S	142.84 °E	220	352	0.66	3.5	14.9	5.9	10.8
	Birchip	35.92 °S	142.85 °E	100	240	0.68	3.2	17.8	6.2	12.6
	Ouyen	35.07 °S	142.31 °E	65	217	0.66	3.5	19.0	6.7	13.3
Mildura	34.18 °S	142.20 °E	54	176	0.63	3.4	19.6	7.2	13.9	

(Continued)

solar radiation) recorded at the reference location (Snowtown) and later systematically perturbed using adjustment factors (or delta factors). Adjustment factors are variable and site-specific and represent the difference between the reference and a given test site.

To account for the intra-annual variability of the climate variables, adjustment factors were calculated at the seasonal and monthly levels. For the calculation of seasonal adjustment factors, daily climate data – for all climate variables – were averaged from April to October (growing season). Monthly adjustment factors were only calculated for the maximum and minimum temperatures, by averaging daily data for each month within the growing season. The record length used for calculating those averages varied. For the reference site, the full period of weather records was used (i.e. 100 years from 1901 to 2000). For each test site, the record length was 10, 20, ..., 100 years in 10-year steps – in order to account for the effect of short climate series on the estimation of adjustment factors and the long-term risk profiles.

Adjustment factors calculated with the full record were referred to as the ‘100-year adjustment factor’. Adjustment factors are listed in Supplementary Tables S1–S5.

Once the average climate data were calculated for the different record lengths and aggregation levels, daily weather data for the reference location were perturbed using adjustment factors summarized in Table 2. The precipitation series were first adjusted with a single factor  $\text{Precip}_{\text{sAF}}$ , which represents the difference in average growing-season precipitation between the test site and the reference location, expressed as a percentage. The adjustment factor for global solar radiation ( $\text{Solar}_{\text{sAF}}$ ) was calculated similarly. In the case of maximum and minimum temperatures, two adjustment factors were calculated. Firstly, a seasonal factor ( $\text{Temp}_{\text{sAF}}$ ), calculated as the difference in average growing-season temperature between a given test site and the reference location, is expressed in °C. Secondly, a monthly factor ( $\text{Temp}_{\text{mAF}}$ ), calculated as the monthly difference in temperature between the reference and a given test site. Weather data were

**Table 1.** (Continued.)

Agro-ecological zone <sup>a</sup>	Site	Latitude	Longitude	Altitude (m a.s.l.)	GSPrecip	Seasonality <sup>b</sup>	$r^c$	GSMaTemp (°C)	GSMiTemp (°C)	GSSolar (MJ/m <sup>2</sup> )
Temperate seasonally dry slopes and plains	Horsham	36.70 °S	142.20 °E	140	297	0.70	3.6	16.8	5.6	11.9
	Nhill	36.33 °S	141.64 °E	133	289	0.71	3.5	17.2	5.5	12.1
	Naracoorte	36.96 °S	140.74 °E	58	440	0.77	3.8	17.0	6.4	11.3
	Keith	36.10 °S	140.36 °E	29	350	0.75	3.5	18.1	7.1	11.9
	Lameroo	35.33 °S	140.52 °E	99	277	0.72	3.4	18.6	6.4	12.6
	Wanbi	34.78 °S	140.27 °E	77	212	0.68	3.7	19.0	6.1	12.9
	Palmer	34.85 °S	139.16 °E	192	302	0.73	3.4	17.7	6.7	12.4
	Roseworthy	34.54 °S	138.75 °E	103	332	0.75	3.7	18.5	7.8	12.8
	Mintaro	33.91 °S	138.72 °E	418	466	0.78	3.5	16.9	5.7	13.0
	<b>Snowtown</b>	<b>33.78 °S</b>	<b>138.21 °E</b>	<b>103</b>	<b>305</b>	<b>0.73</b>	<b>3.5</b>	<b>19.0</b>	<b>7.0</b>	<b>13.2</b>
	Orroroo	32.73 °S	138.61 °E	428	230	0.68	3.3	17.9	5.4	13.9
	Kimba	33.14 °S	136.41 °E	280	250	0.74	3.7	19.1	7.3	13.5
	Cummins	34.26 °S	135.73 °E	65	346	0.81	3.8	18.7	8.5	12.7
	Kyancutta	33.13 °S	135.55 °E	59	234	0.75	3.8	20.9	6.6	13.7
	Minnipa	32.84 °S	135.15 °E	168	243	0.75	3.7	19.9	8.3	13.8
	Jerramungup	33.92 °S	118.95 °E	300	284	0.74	3.5	18.6	7.4	13.0
	Newdegate	33.09 °S	119.02 °E	300	271	0.77	3.6	19.0	6.8	13.5
	Kojonup	33.83 °S	117.16 °E	305	449	0.85	3.5	17.3	6.9	12.4
	Narrogin	32.93 °S	117.18 °E	338	424	0.86	3.6	17.7	6.8	13.2
	Beverley	32.11 °S	116.92 °E	199	362	0.85	3.4	19.7	6.7	13.9
	Merredin	31.50 °S	118.22 °E	318	234	0.77	3.5	19.9	7.4	14.6
	Wongan Hills	30.89 °S	116.72 °E	283	319	0.84	3.4	20.4	8.5	14.8
	Bencubbin	30.81 °S	117.86 °E	359	238	0.76	3.5	20.4	8.0	15.1
Mingenew	29.19 °S	115.44 °E	153	354	0.88	3.1	22.4	9.9	15.8	
Yuna	28.33 °S	114.96 °E	270	300	0.85	3.2	22.0	10.0	16.3	

Note: Period 1901–2000.

<sup>a</sup>Agro-ecological zones as defined in (Williams *et al.*, 2002).

<sup>b</sup>Seasonality (Walsh and Lawler, 1981).

<sup>c</sup> $r$  (Sadras, 2003).

then adjusted by multiplying (precipitation and global solar radiation) or adding (temperature) the corresponding factor of every daily record (Table 2).

Adjustment factors calculated with a variable record length (<100 years) were compared with the 100-year adjustment factor. This comparison was established at a test site level using the difference of any given adjustment factor and climate variable from the 100-year adjustment factor.

#### Step-wise addition of weather data adjustments

Five types of adjustments were applied, resulting from the combination of variables included and level of aggregation (Table 3). For example, the Precip<sub>s</sub> consisted of adjusting the daily weather data for precipitation, using a seasonal aggregation, whereas temperatures and solar radiation were unadjusted. Precip<sub>s</sub>Temp<sub>m</sub>Solar<sub>s</sub> was the most complete adjustment, in which all the climate variables from the reference site were adjusted using two different aggregations for the calculation of

the average climate data (i.e. seasonal for precipitation and solar radiation, and monthly for temperature).

#### Crop yield simulations

Wheat grain yield was simulated with APSIM (Agricultural Production Systems Simulator Model) Version 7.8 (Keating *et al.*, 2003; Holzworth *et al.*, 2014). APSIM has been locally calibrated, widely tested and extensively used for climate risk in the study area (Asseng *et al.*, 2002, 2015; Luo *et al.*, 2005, 2009; Robertson *et al.*, 2015).

Observed and adjusted daily weather data calculated for variable periods were used as model inputs. To capture the effects of climate and alternative weather inputs in the current study, the soil type and management practices were kept constant, and assumed no limitation by nitrogen, pests or diseases. To exclude the interaction between the sowing time and climate (Luo *et al.*, 2009; Hayman *et al.*, 2010a), one fixed sowing date was simulated (14 May); sowing density was set to 180 plants/m<sup>2</sup>, with a 30 mm

**Table 2.** Equations for calculating adjustment factors of weather data

Climate variable adjusted	Aggregation of weather data		Adjustment factor equations
	seasonal ( <sub>s</sub> )	monthly ( <sub>m</sub> )	
Precipitation (Precip)	✓		$Precip_{SAF} (\%) = \left( \frac{GSPrecip_{ref} - GSPrecip_k}{GSP_{ref}} \right) \times 100$
Maximum temperature (MaxTemp)	✓		$MaxTemp_{SAF} (^{\circ}C) = GMaxTemp_{ref} - GMaxTemp_k$
		✓	$MaxTemp_{mAF} (^{\circ}C) = MaxTemp_{m_{ref}} - MaxTemp_{m_k}$
Minimum temperature (MinTemp)	✓		$MinTemp_{SAF} (^{\circ}C) = GMinTemp_{ref} - GMinTemp_k$
		✓	$MinTemp_{mAF} (^{\circ}C) = MinTemp_{m_{ref}} - MinTemp_{m_k}$
Global solar radiation (Solar)	✓		$Solar_{SAF} (\%) = \left( \frac{GSSolar_{ref} - GSSolar_k}{GSSolar_{ref}} \right) \times 100$

Note: GSPrecip, GMaxTemp, GMinTemp, and GSSolar refer to the long-term average growing season precipitation, maximum temperature, minimum temperature, and global solar radiation, respectively. MaxTemp<sub>m</sub> and MinTemp<sub>m</sub> refer to the long-term monthly temperature averages for months *m* = 4, 5, ..., 10, within the growing season. The terms ref and k refer to the reference location and test sites.

**Table 3.** Step-wise adjustment applied to the daily weather data at the reference location

Adjustment	Weather variable(s) adjusted	Averaged weather data used for calculating adjustment factors	
		Seasonal( <sub>s</sub> )	Monthly( <sub>m</sub> )
Precip <sub>s</sub>	Precipitation	✓	
Precip <sub>s</sub> Temp <sub>s</sub>	Precipitation and maximum and minimum temperatures	✓	
Precip <sub>s</sub> Temp <sub>m</sub>	Precipitation and maximum and minimum temperatures	Precipitation	Temperatures
Precip <sub>s</sub> Temp <sub>s</sub> Solar <sub>s</sub>	Precipitation, maximum and minimum temperatures and global solar radiation	✓	
Precip <sub>s</sub> Temp <sub>m</sub> Solar <sub>s</sub>	Precipitation, maximum and minimum temperatures and global solar radiation	Precipitation and global solar radiation	Temperatures

Note: Weather data at the reference site is adjusted by a seasonal adjustment factor for precipitation only (Precip<sub>s</sub>), seasonal adjustment factors for precipitation and temperatures only (Precip<sub>s</sub>Temp<sub>s</sub>), a seasonal adjustment factor for precipitation and monthly adjustment factors for temperatures (Precip<sub>s</sub>Temp<sub>m</sub>), a seasonal adjustment factor for precipitation, temperatures and global solar radiation (Precip<sub>s</sub>Temp<sub>s</sub>Solar<sub>s</sub>), and, a seasonal adjustment factor for precipitation and global solar radiation, and monthly adjustment factors for temperatures (Precip<sub>s</sub>Temp<sub>m</sub>Solar<sub>s</sub>)

sowing depth and 250 mm row spacing. Crop parameters used were those from locally adapted varieties, Mace (an early maturing variety) for the winter-rainfall regions of Western Australia, South Australia, Victoria and southern New South Wales; and Gregory (a medium maturing variety) for the summer-rainfall locations of northern New South Wales and Queensland. Crop parameters are summarized in Table 4.

The soil used has a sandy texture, organic carbon content of 0.7% (0–10 cm), rooting depth of 100 cm and 80 mm of plant available water content (PAWC). Key soil characteristics are presented in Table 5. Initial water and nitrogen contents were reset every year on the 1st of April to exclude the effects of previous seasons, as suggested in the literature (Sadras and Rodriguez, 2010; Luo *et al.*, 2013). The initial soil water content was set to full profile, filled from the top layer to ensure crop establishment (Bell *et al.*, 2015), and the initial nitrogen level was set to 100 kg N/ha as urea at sowing.

**Risk profiles of modelled wheat grain yields (MWGYs)**

Risk profiles were defined as the cumulative probability curve of the annual MWGY for each site, type of weather adjustment (Table 3), and record length. Yields were ranked and corresponding percentiles were calculated. Risk profiles of the MWGYs

across the types of adjustments and record lengths were compared using Q:Q plots. Statistics for the comparisons included the root mean squared error (RMSE, Eqn (1)), and the bias (Eqn (2)), overall percentile classes *p* at each of the 49 test sites *j* as follows:

$$RMSE_j = \sum_{p=1}^{100} \sqrt{(MWGY_{p_j} - MWGY_{baseline, p_j})^2} \quad (1)$$

and

$$Bias_j (\%) = \frac{1}{N} \sum_{p=1}^{100} \left( \frac{MWGY_{p_j} - MWGY_{baseline, p_j}}{MWGY_{baseline, p_j}} \right) \times 100 \quad (2)$$

The bias of the MWGY represents the difference between the risk profiles of MWGY built with weather data adjusted with long-term adjustment factors and those built with data adjusted with shorter record lengths, as illustrated in Fig. 2.

Both indices, RMSE and bias, were mapped for every type of adjustment applied to the reference location, to (i) visualize the spatial variation of the performance indices, (ii) compare the regions and (iii) determine the effect of adjusting a particular set of climate variables on the robustness of the MWGY risk profiles. Construction and statistical analysis of the risk profiles of the

**Table 4.** Cultivar-specific parameters for wheat cultivars Mace and Gregory used for the parameterisation of APSIM

Cultivar	Parameter	Value
Mace	Vernalisation sensitivity (vern_sens)	2.3
	Photoperiod sensitivity (photop_sens)	3.2
	Grains per gram stem (grains_per_gram_stem)	25
	Potential grain filling rate (potential_grain_filling_rate, grain <sup>-1</sup> d <sup>-1</sup> )	0.002
	Potential grain growth rate (potential_grain_growth_rate, g grain <sup>-1</sup> d <sup>-1</sup> )	0.001
	Maximum grain size (max_grain_size, g)	0.041
	Thermal time from emergence to end of juvenile (tt_end_of_juvenile, °Cd)	400
	Thermal time from end of juvenile to floral initiation (tt_flowering_initiation, °Cd)	555
	Thermal time from flowering to start grain filling (tt_start_grain_fill, °Cd)	545
Gregory	Vernalisation sensitivity (vern_sens)	2.7
	Photoperiod sensitivity (photop_sens)	3.2
	Grains per gram stem (grains_per_gram_stem)	25
	Potential grain filling rate (potential_grain_filling_rate, grain <sup>-1</sup> d <sup>-1</sup> )	0.002
	Potential grain growth rate (potential_grain_growth_rate, g grain <sup>-1</sup> d <sup>-1</sup> )	0.001
	Maximum grain size (max_grain_size, g)	0.041
	Thermal time from emergence to end of juvenile (tt_end_of_juvenile, °Cd)	400
	Thermal time from end of juvenile to floral initiation (tt_flowering_initiation, °Cd)	555
	Thermal time from flowering to start grain filling (tt_start_grain_fill, °Cd)	650

**Table 5.** Key soil characteristics used for the initialisation of APSIM

Depth (cm)	BD (g/cm <sup>3</sup> )	AirDry (mm/mm)	LL (mm/mm)	DUL (mm/mm)	SAT (mm/mm)	OC (total %)	Fbiom (0–1)	Finert (0–1)
0–10	1.3	0.044	0.087	0.204	0.459	0.64	0.035	0.4
10–20	1.3	0.096	0.12	0.25	0.459	0.66	0.02	0.6
20–40	1.3	0.175	0.175	0.25	0.459	0.72	0.02	0.7
40–60	1.3	0.18	0.18	0.25	0.459	0.61	0.015	0.7
60–80	1.3	0.18	0.18	0.25	0.459	0.27	0.015	0.8

Note: BD, bulk density; AirDry, Air-dry soil water content; LL, Lower limit of plant available water or permanent wilting point; DUL, drained upper limit of plant available water or field capacity; SAT, saturated soil water content; OC, Organic carbon; Fbiom, fraction of susceptible organic carbon; Finert, fraction of organic carbon that is not susceptible to decomposition.

MWGY were performed using R software (R Development Core Team, 2020) and maps were created using ArcGIS® software (ESRI 2015).

## Results

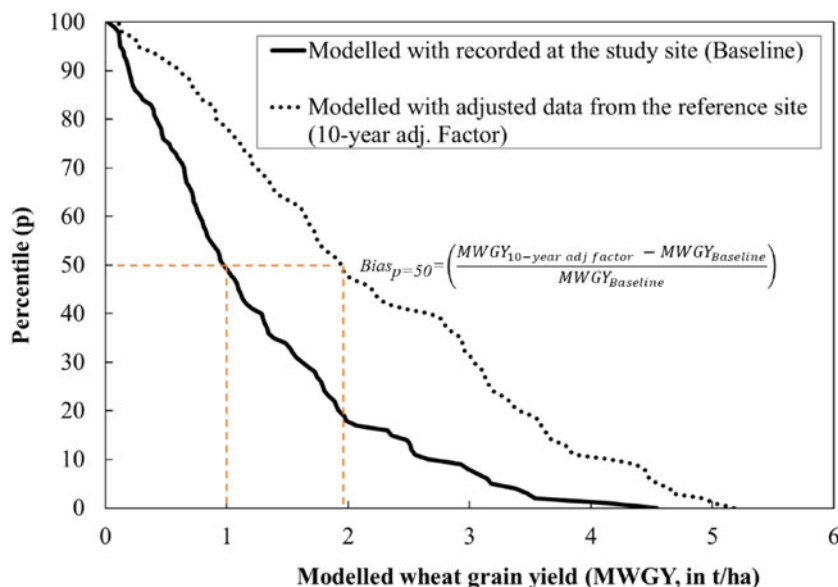
### Long-term adjustment factors and weather data record lengths

The calculation of 100-year adjustment factors is based on the difference in the long-term growing-season average of the reference and test sites. Here, we examined the sensitivity of four adjustment factors – for precipitation, maximum temperature, minimum temperature and solar radiation – to the length of the weather record (Figs 3 and 4).

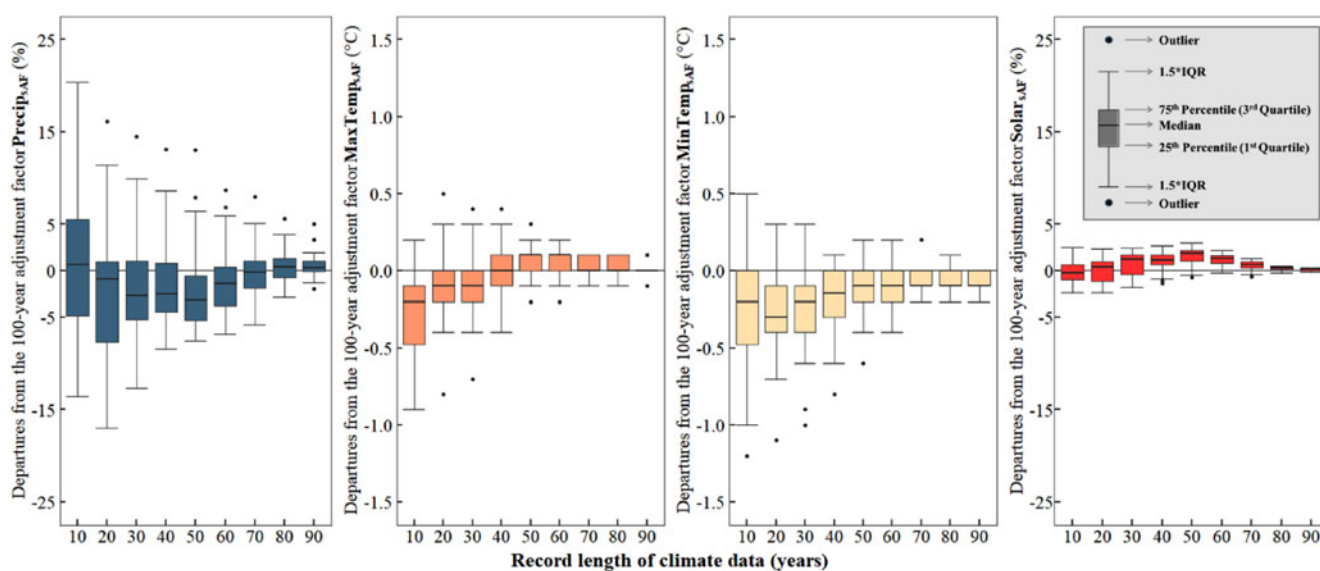
All seasonal adjustment factors were sensitive to the record length, especially for records shorter than 30 years. In the case of precipitation, departures ranged from –14 and 20% for the

10-year series and dropped within the range –10 and 10% with 40 or more years (Fig. 3). Long-term adjustment factors for temperatures were mostly underestimated with shorter records; series of 10 years diverged by –0.9 and 0.3°C for maximum and between –1.2 and 0.5°C for minimum temperature in relation to 100-year series. At most test sites, these departures were reduced to –0.5 to 0.5°C with records longer than 30 years. Solar radiation was the variable with the lowest sensitivity to the record length, with departures ranging between –2.4 and 3%, and with a slight increment at record lengths between 30 and 60 years of weather data.

The effect of record length on the calculation of adjustment factors for maximum and minimum temperatures was stronger at the monthly level (Fig. 4). Particularly, record lengths equal and shorter than 40 years produced the highest departures of adjustment factors from the 100-year factors, independent of the month. However, the departures were higher during the transition months, i.e. April and May for the minimum temperature



**Fig. 2.** Comparison of two risk profiles of MWGY, using recorded weather data at the study site Nyngan (NSW, Australia), and using adjusted weather data from a reference site with a 10-year adjustment factor. Bias (normalized) at percentile 50th corresponds to the difference between both MWGY normalized with the mean of the MWGY modelled with observed weather data at the study site.



**Fig. 3.** Departures from the 100-year adjustment factors relative to those calculated with shorter record lengths in 49 locations of the Australian wheat-belt. From left to right weather records of the reference location were adjusted as a function of seasonal precipitation ( $Precip_{sAF}$ ), seasonal maximum temperature ( $MaxTemp_{sAF}$ ), seasonal minimum temperature ( $MinTemp_{sAF}$ ) and seasonal solar radiation ( $Solar_{sAF}$ ). IQR refers to the inter-quartile range.

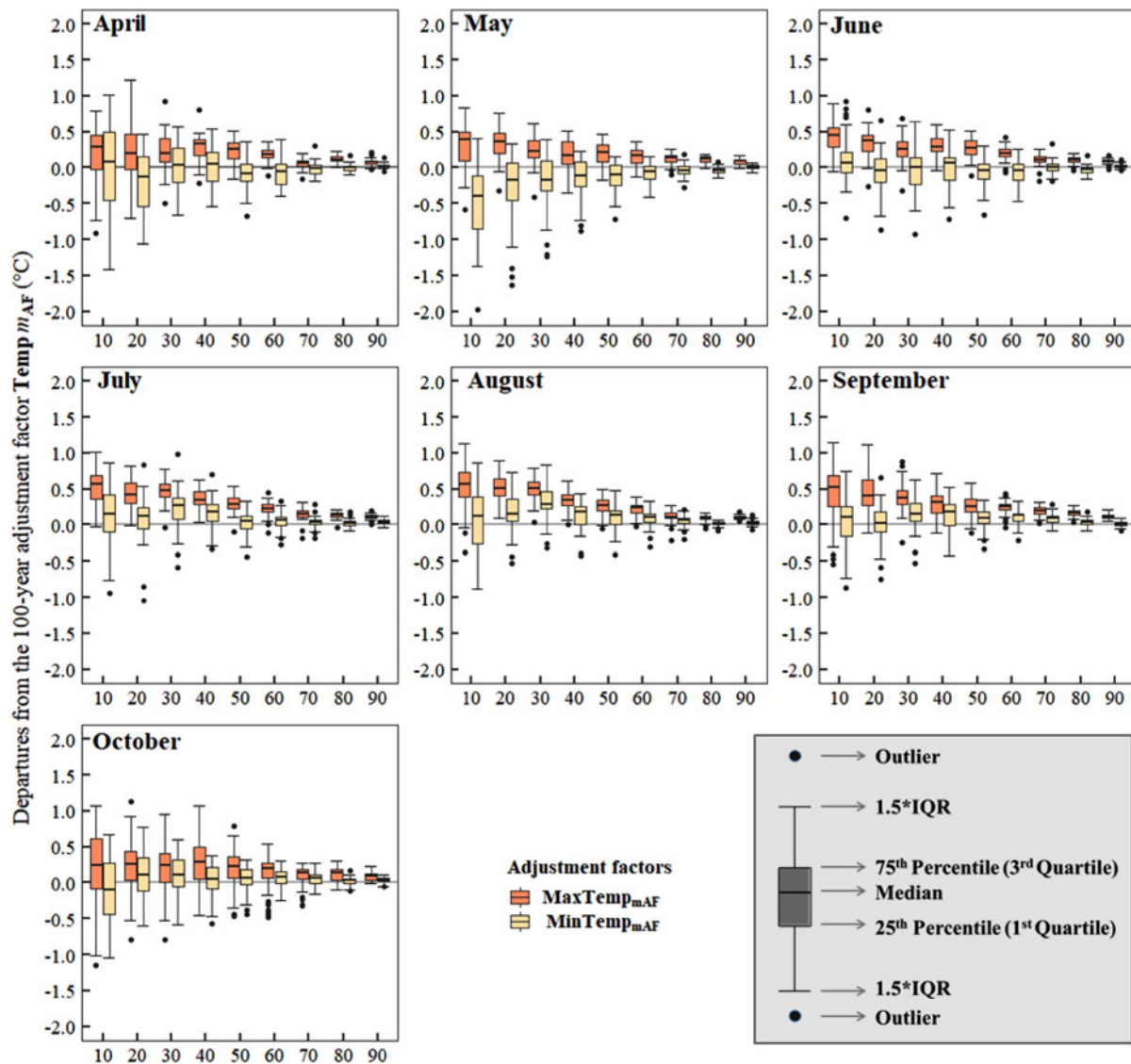
factors, and April and October for the maximum temperature factors. At most test sites, departures were within  $-0.5$  to  $0.5^{\circ}C$  with records longer than 40 years (Fig. 4).

### Long-term risk profiles of MWGY and weather data record lengths

The use of averaged climate data for record lengths shorter than the 100-year period affected the long-term risk profile of MWGY. In Fig. 5, all the test sites are included, but we only present three of the five types of adjustments used in this study (i.e.  $Precip_s$ ,  $Precip_sTemp_m$  and  $Precip_sTemp_mSolar_s$ ). The adjustments  $Precip_sTemp_s$  and  $Precip_sTemp_sSolar_s$  are not shown

since lower bias was obtained with the  $Precip_sTemp_m$  and  $Precip_sTemp_mSolar_s$  adjustments (bias and RMSE values are summarized in the Supplementary Material, Table S6).

The bias of MWGY risk profiles varied spatially (Fig. 5, Table S6). Test sites in the temperate agro-ecological zones with winter-dominant rainfall (Fig. 1) had the lowest biases across all types of adjustments and climate data record lengths (Fig. 5). Long-term risk profiles of MWGY of test sites in wet subtropical coast, subhumid subtropical, and semiarid tropical and subtropical locations were mostly overestimated, with the greatest biases in the study area (Fig. 5). The low matching observed in northern and north-eastern sites is exacerbated by the shortest climate data record lengths. Matching in the  $-10$  to  $10\%$  range was only



**Fig. 4.** Departures from the 100-year monthly adjustment factors for maximum and minimum temperatures relative to those calculated with shorter record lengths in 49 locations of the Australian wheat-belt. Weather records of the reference location were adjusted as a function of the monthly maximum temperature ( $\text{MaxTemp}_{\text{mAF}}$ ), and the seasonal minimum temperature ( $\text{MinTemp}_{\text{mAF}}$ ). IQR refers to the inter-quartile range.

achieved in those sites with record lengths of 80 or more years and including all adjustments.

The proportion of test sites in which the long-term risk profiles were estimated within  $-5$  to  $5\%$  bias improved with extra adjustments (precipitation, temperature, and solar radiation) and as the record length was increased (Fig. 5, pie charts). Using the shortest record length (10 years) the simplest adjustment ( $\text{Precip}_s$ ) produced matching of long-term risk profiles in range  $-10$  to  $10\%$  for  $41\%$  of the sites, which increased to  $49\%$  with the  $\text{Precip}_s\text{Temp}_s$  adjustment,  $53\%$  with the  $\text{Precip}_s\text{Temp}_m$ , and up to  $60\%$  of the sites with the most complete types of adjustments ( $\text{Precip}_s\text{Temp}_m\text{Solar}_s$ ). These proportions did not change substantially for record lengths between 10 and 50 years of averaged climate data. However, using averaged climate data for a period of 60 or more years increased the number of sites with bias within  $-10$  and  $10\%$ . For example, with the  $\text{Precip}_s$  adjustment, the number of sites went from  $47\%$  (60 years of record length) to  $51\%$  (with 100 years of record length), while the use of the

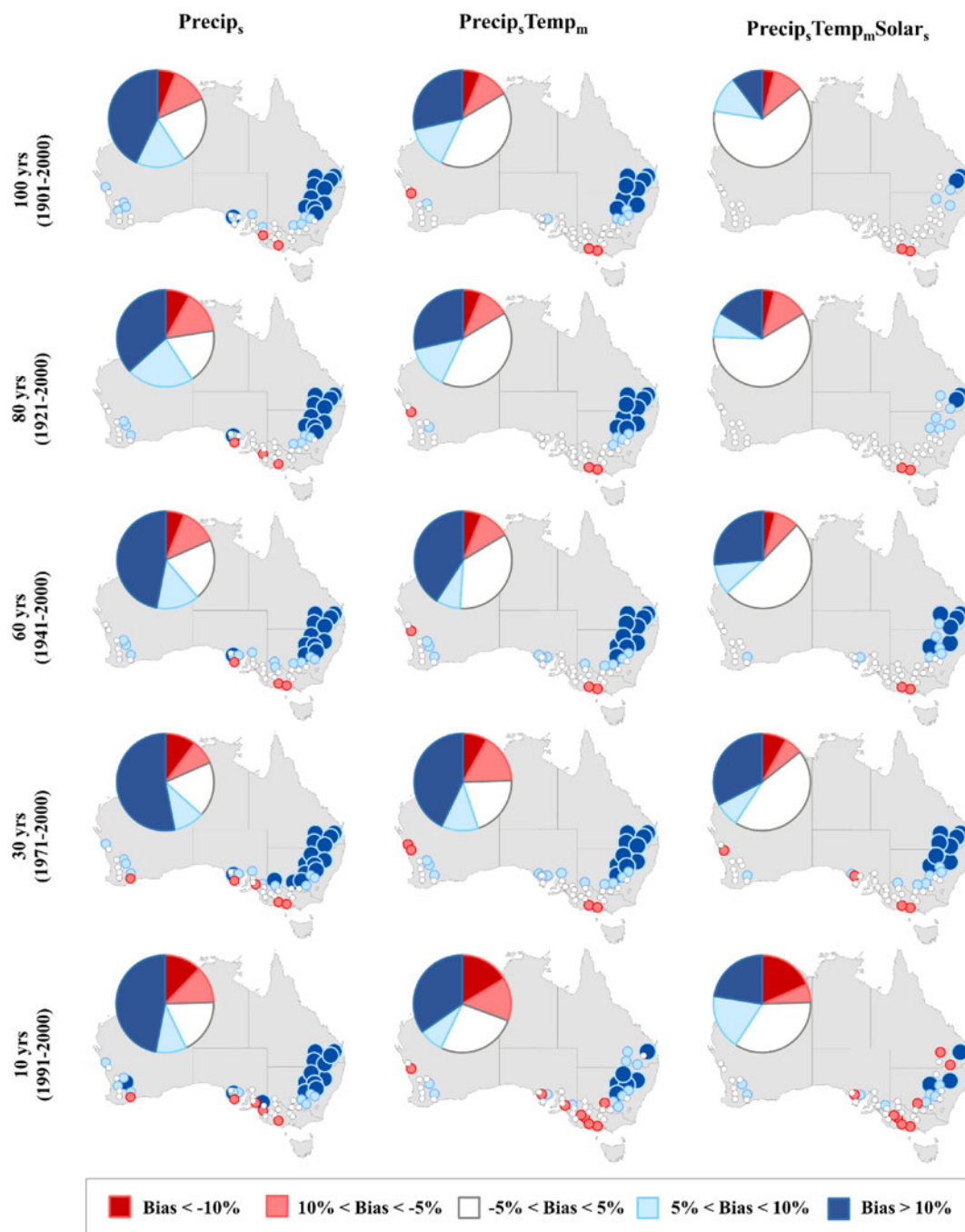
$\text{Precip}_s\text{Temp}_m\text{Solar}_s$  adjustment the number of sites increased from  $59$  to  $86\%$  of the test sites.

## Discussion

The effect of limited temporal coverage of averaged climate data on the validity of a method for scaling weather data for extrapolation of long-term risk profiles for simulated crop yields was examined in the current study. This method uses averaged climate data for precipitation, temperature and solar radiation to scale daily weather data from a reference site with long-term records. Scaled daily data are then used for simulating crop yields and building long-term risk profiles, demonstrating that the method tested is able to provide a robust spatial extrapolation of risk profiles, even if the temporal extent of the averaged climate data is limited.

The adjustment factors showed different responses to the record length used for averaging the climate data. As expected, sensitivity to record length ranked precipitation > minimum





**Fig. 5.** Bias (%) of the risk profiles of MWGYs built with adjustment factors calculated with variable record lengths of weather data across the different types of adjustments incorporated. Bias compares the risk profiles obtained with weather data observed at the study site for the period 1901–2000, and those obtained with scaled weather data using a variable record length of size  $n$  ( $n = 10, 20, \dots, 100$ ) for calculating the seasonal adjustment factors for precipitation, maximum and minimum temperatures and solar radiation. The pie charts show the proportion of test sites within different categories of bias.

temperature > maximum temperature > global solar radiation. This response is primarily driven by the natural variability of these climate variables, which is considerably higher for precipitation, and lower for temperature and solar radiation (Jäger, 1988; Von Storch and Zwiers, 1999). Despite this fact, reasonable estimates of the long-term adjustment factors were obtained when using averaged data for shorter time periods. In the case of precipitation, at least 40 years were necessary to obtain departures of the long-term adjustment factor within the range  $-10$  and  $10\%$  (Fig. 3). For both, the maximum and the minimum

temperatures, a minimum of 30 years at most test sites produced departures spanning from  $-0.5$  to  $0.5^\circ\text{C}$  at seasonal level (Fig. 3), and a minimum of 40 years for monthly adjustment factors (Fig. 4). For solar radiation, 10 years records produced departures between  $-2.4$  and  $3\%$  (Fig. 3). This finding is relevant for potential future applications of the method in data-sparse environments.

The long-term risk profile of MWGY was also sensitive to the temporal coverage of the averaged climate data (Figs 3–5). However, the number of adjustments applied had a major effect

on the long-term risk profile. The most complete adjustment (Precip<sub>s</sub>Temp<sub>m</sub>Solar<sub>s</sub>) produced acceptable matching of risk profiles in ~60% of the test sites using record lengths between 10 and 50 years. This proportion of sites was higher than the 51% of sites when 100 years of record length was used with only precipitation adjusted. There was also a spatial pattern in the matching of risk profiles. Better results were obtained in winter-rainfall sites, which required fewer adjustments and record lengths, while most summer-rainfall sites required more adjustments and the longest period of averaged climate data. This could be explained by the similarity in climates in the reference location and the western, southern and south-eastern sites, all falling in temperate regions (Williams *et al.*, 2002) with comparable rainfall patterns in terms of amount, seasonality and size of events (Table 1; Williamson, 2007).

The current study uses a simple method for extrapolating risk profiles described in Hayman *et al.* (2010b) and Liddicoat *et al.* (2012) and further developed in Bracho-Mujica *et al.* (2019b), and expand in several aspects. Firstly, the extrapolation method was tested under a non-uncommon situation of having limited daily weather data (in terms of both temporal and spatial coverage) for estimating modelled risk profiles. Secondly, it endorses the incorporation of the monthly adjustment of maximum and minimum temperatures accounting for the role of temperature on crop development (Bracho-Mujica *et al.*, 2019b). Thirdly, it demonstrates the importance of the number of adjustments over the record length of the averaged climate data, which was not tested in previous studies. Fourthly, results from this study allow us to estimate the minimum record length necessary for calculating robust adjustment factors. This enables to produce more robust matching between MWGY risk profiles and illuminate similarities and differences among and across locations on a continental scale.

Crop modellers working in data-sparse environments can use these results to save computational time on climate data, which frees up resources for other factors such as soil types. Farmers and agronomists can use the findings to judge the reliability of simple climate adjustments for risk analysis based on modelled yield. The extensive comparison across the Australian grain belt not only highlights the importance of adjusting the most critical climate variable determining wheat yield, precipitation, but also points to the need to adjust temperature and solar radiation to improve the estimation of the risk profiles of modelled crop yields.

The impact of the temporal coverage of the averaged climate data was explored in the current research, assuming that all climate variables had the same record length. However, another interesting aspect to explore in future studies would be the impact of different temporal coverages across all the climate variables. Nevertheless, these findings provide evidence that temporal coverage is not as important as the type and number of adjustments used for the determination of robust risk profiles of MWGY.

The use of the method for scaling climate data has been rigorously tested across multiple sites and climates within the Australian grain belt, and results demonstrate the power of this simple method for extrapolating the long-term risk profiles of MWGY. However, it is important to note that this method was not intended for estimating year-to-year crop yields but for long-term risk profiles of crop yields. Furthermore, it is important to highlight that the approach used in the current study did not account for the spatial variability of soils and management practices (i.e. sowing dates and nitrogen fertilization), which allowed examination of the maximum impact of climate on the method of extrapolation of risk profiles.

## Conclusions

A simple method for adjusting daily weather data for extrapolating risk profiles was tested across the entire Australian-grain belt. Risk profiles based on process-based models could be accurately extrapolated even if only short climate data series were available to compute adjustment factors. The results indicated that although the temporal coverage of the climate data used for adjusting daily records is important, the adjustment of all climate variables (i.e. precipitation, temperatures and solar radiation) produced the most reliable estimations of modelled yield risk across a large area, encompassing a diversity of climates.

**Supplementary material.** The supplementary material for this article can be found at <https://doi.org/10.1017/S0021859621000253>

**Acknowledgements.** We thank Alison-Jane Hunter for the proofreading of this paper.

**Financial support.** This research was supported by an Australia Awards Scholarship (AAS), from the Australian Department of Foreign Affairs and Trade to G. Bracho-Mujica. P.T. Hayman time supported by Australian Government Rural R&D for Profit.

**Conflict of interest.** The authors declare there are no conflicts of interest.

**Ethical standards.** Not applicable.

## References

- ABARES – BRS (2010) Land use of Australia, version 4, 2005–2006. Canberra, ACT: Australian Bureau of Agricultural and Resource Economics – Bureau of Rural Sciences (ABARES – BRS). Available at <https://data.gov.au/data/dataset/a18dbf2b-c0fe-4a26-b39a-e553bf6c39b5>.
- Asseng S, Bar-Tal A, Bowden JW, Keating BA, Van Herwaarden A, Palta JA, Huth NI and Probert ME (2002) Simulation of grain protein content with APSIM-Nwheat. *European Journal of Agronomy* **16**, 25–42.
- Asseng S, Zhu Y, Wang E and Zhang W (2015) Crop modeling for climate change impact and adaptation. In Sadras VO and Calderini DF (eds.). *Crop Physiology: Applications for Genetic Improvement and Agronomy*, 2nd edn. London, UK: Academic Press, pp. 505–546.
- Australian Bureau of Statistics (2020) Value of Agricultural Commodities Produced, Australia, 2018–2019. Available at <https://www.abs.gov.au/statistics/industry/agriculture/value-agricultural-commodities-produced-australia/latest-release#data-download>.
- Bell LW, Lilley JM, Hunt JR and Kirkegaard JA (2015) Optimising grain yield and grazing potential of crops across Australia's high-rainfall zone: a simulation analysis. 1. Wheat. *Crop and Pasture Science* **66**, 332–348.
- Bracho-Mujica G, Hayman PT and Ostendorf B (2019a) Modelling long-term risk profiles of wheat grain yield with limited climate data. *Agricultural Systems* **173**, 393–402.
- Bracho-Mujica G, Hayman PT, Sadras VO and Ostendorf B (2019b) Simple scaling of climate inputs allows robust extrapolation of modelled wheat yield risk at a continental scale. *Climate Risk Management* **23**, 101–113.
- Domsch H, Kaiser T, Witzke K, Zauer O, Stafford J and Werner A (2003) Empirical methods to detect management zones with respect to yield. In Stafford J and Werner A (eds), *Precision Agriculture*. Wageningen: Wageningen Academic Publishers, pp. 187–192.
- ESRI (2015) ArcGIS Desktop: Release 10.3.1.
- Folland C and Anderson C (2002) Estimating changing extremes using empirical ranking methods. *Journal of Climate* **15**, 2954–2960.
- Grassini P, van Bussel LGJ, Van Wart J, Wolf J, Claessens L, Yang H, Boogaard H, de Groot H, van Ittersum MK and Cassman KG (2015) How good is good enough? Data requirements for reliable crop yield simulations and yield-gap analysis. *Field Crops Research* **177**, 49–63.
- Hammer GL, Holzworth DP and Stone R (1996) The value of skill in seasonal climate forecasting to wheat crop management in a region with high climatic variability. *Crop and Pasture Science* **47**, 717–737.

- Hayman PT, Whitbread A and Gobbett D (2008) Practicing agronomy in an uncertain climate—Using simulation modelling to study seasonal drought and the impact of ENSO in the Southern Australian grains belt. In Proceedings of the 14th ASA Conference, Adelaide, South Australia.
- Hayman PT, Whitbread AM and Gobbett DL (2010a) The impact of El Niño Southern Oscillation on seasonal drought in the southern Australian grain-belt. *Crop and Pasture Science* **61**, 528–539.
- Hayman PT, Wilhelm N, Alexander B and Nidumolu U (2010b) Using temporal and spatial analogues to consider impacts and adaptation to climate change in the South Australian grain belt. In Food Security from Sustainable Agriculture: Proceedings of 15th Agronomy Conference (Eds H. Dove & R. Culvenor), pp. 15–18. Lincoln, New Zealand.
- Hersbach H, Bell B, Berrisford P, Hirahara S, Horányi A, Muñoz-Sabater J, Nicolas J, Peubey C, Radu R, Schepers D, Simmons A, Soci C, Abdalla S, Abellan X, Balsamo G, Bechtold P, Biavati G, Bidlot J, Bonavita M, De Chiara G, Dahlgren P, Dee D, Diamantakis M, Dragani R, Flemming J, Forbes R, Fuentes M, Geer A, Haimberger L, Healy S, Hogan RJ, Hólm E, Janisková M, Keeley S, Laloyaux P, Lopez P, Lupu C, Radnoti G, de Rosnay P, Rozum I, Vamborg F, Villaume S and Thépaut JN (2020) The ERA5 global reanalysis. *Quarterly Journal of the Royal Meteorological Society* **146**, 1999–2049.
- Hochman Z and Horan H (2018) Causes of wheat yield gaps and opportunities to advance the water-limited yield frontier in Australia. *Field Crops Research* **228**, 20–30.
- Hochman Z, van Rees H, Carberry PS, Hunt JR, McCown RL, Gartmann A, Holzworth D, van Rees S, Dalgliesh NP, Long W, Peake AS, Poulton PL and McClelland T (2009) Re-inventing model-based decision support with Australian dryland farmers. 4. Yield Prophet® helps farmers monitor and manage crops in a variable climate. *Crop and Pasture Science* **60**, 1057–1070.
- Holzworth DP, Huth NI, DeVoil PG, Zurcher EJ, Herrmann NI, McLean G, Chenu K, van Oosterom EJ, Snow V, Murphy C, Moore AD, Brown H, Whish JPM, Verrall S, Fainges J, Bell LW, Peake AS, Poulton PL, Hochman Z, Thorburn PJ, Gaydon DS, Dalgliesh NP, Rodriguez D, Cox H, Chapman S, Doherty A, Teixeira E, Sharp J, Cichota R, Vogeler I, Li FY, Wang E, Hammer GL, Robertson MJ, Dimes JP, Whitbread AM, Hunt J, van Rees H, McClelland T, Carberry PS, Hargreaves JNG, MacLeod N, McDonald C, Harsdorf J, Wedgwood S and Keating BA (2014) APSIM – Evolution towards a new generation of agricultural systems simulation. *Environmental Modelling & Software* **62**, 327–350.
- Hunt J, van Rees H, Hochman Z, Carberry P, Holzworth D, Dalgliesh N, Brennan L, Poulton P, van Rees S and Huth N (2006) Yield Prophet®: An online crop simulation service. In Proceedings of the 13th Australian Agronomy Conference, pp. 10–14.
- Jäger J (1988) Development of climatic scenarios: b. Background to the instrumental record. In Parry ML, Carter TR and Konijn NT (eds), *The Impact of Climatic Variations on Agriculture: Volume 1: Assessment in Cool Temperate and Cold Regions*. Dordrecht: Springer Netherlands, pp. 159–181.
- Jeffrey SJ, Carter JO, Moodie KB and Beswick AR (2001) Using spatial interpolation to construct a comprehensive archive of Australian climate data. *Environmental Modelling & Software* **16**, 309–330.
- Jones DA, Wang W and Fawcett R (2009) High-quality spatial climate data-sets for Australia. *Australian Meteorological and Oceanographic Journal* **58**, 233.
- Keating BA, Carberry PS, Hammer GL, Probert ME, Robertson MJ, Holzworth D, Huth NI, Hargreaves JNG, Meinke H, Hochman Z, McLean G, Verburg K, Snow V, Dimes JP, Silburn M, Wang E, Brown S, Bristow KL, Asseng S, Chapman S, McCown RL, Freebairn DM and Smith CJ (2003) An overview of APSIM, a model designed for farming systems simulation. *European Journal of Agronomy* **18**, 267–288.
- Lamboni M, Makowski D, Lehuger S, Gabrielle B and Monod H (2009) Multivariate global sensitivity analysis for dynamic crop models. *Field Crops Research* **113**, 312–320.
- Liddicoat C, Hayman PT, Alexander B, Rowland J, Maschmedt D, Young MA, Hall J, Herrmann T and Sweeney S (2012) *Climate Change, Wheat Production and Erosion Risk in South Australia's Cropping Zone: Linking Crop Simulation Modelling to Soil Landscape Mapping*. Adelaide, Australia: Government of South Australia, through Department of Environment, Water and Natural Resources.
- Luo Q, Bellotti W, Williams M and Bryan B (2005) Potential impact of climate change on wheat yield in South Australia. *Agricultural and Forest Meteorology* **132**, 273–285.
- Luo Q, Bellotti W, Williams M and Wang E (2009) Adaptation to climate change of wheat growing in South Australia: analysis of management and breeding strategies. *Agriculture, Ecosystems & Environment* **129**, 261–267.
- Luo Q, Wen L, McGregor J and Timbal B (2013) A comparison of downscaling techniques in the projection of local climate change and wheat yields. *Climatic Change* **120**, 249–261.
- Meinke H, Stone RC and Hammer GL (1996) SOI phases and climatic risk to peanut production: a case study for Northern Australia. *International Journal of Climatology* **16**, 783–789.
- Potgieter AB, Hammer GL and Butler D (2002) Spatial and temporal patterns in Australian wheat yield and their relationship with ENSO. *Australian Journal of Agricultural Research* **53**, 77–89.
- R Development Core Team (2020) *R: A Language and Environment for Statistical Computing*. Vienna, Austria: R Foundation for Statistical Computing.
- Robertson MJ, Rebetzke GJ and Norton RM (2015) Assessing the place and role of crop simulation modelling in Australia. *Crop and Pasture Science* **66**, 877–893.
- Ruane AC, Goldberg R and Chryssanthacopoulos J (2015) Climate forcing datasets for agricultural modeling: merged products for gap-filling and historical climate series estimation. *Agricultural and Forest Meteorology* **200**, 233–248.
- Sadras VO (2003) Influence of size of rainfall events on water-driven processes. I. Water budget of wheat crops in south-eastern Australia. *Australian Journal of Agricultural Research* **54**, 341–351.
- Sadras VO and Rodriguez D (2010) Modelling the nitrogen-driven trade-off between nitrogen utilisation efficiency and water use efficiency of wheat in eastern Australia. *Field Crops Research* **118**, 297–305.
- Stöckle CO, Donatelli M and Nelson R (2003) CropSyst, a cropping systems simulation model. *European Journal of Agronomy* **18**, 289–307.
- Trewin D (2006) The Australian wheat industry. In ABS (ed.), 2006 Year Book Australia. Canberra: Australian Bureau of Statistics, pp. 431–439.
- Trewin B (2013) A daily homogenized temperature data set for Australia. *International Journal of Climatology* **33**, 1510–1529.
- van Bussel LGJ, Müller C, van Keulen H, Ewert F and Leffelaar PA (2011) The effect of temporal aggregation of weather input data on crop growth models' results. *Agricultural and Forest Meteorology* **151**, 607–619.
- van Dijk AIJM, Beck HE, Crosbie RS, de Jeu RAM, Liu YY, Podger GM, Timbal B and Viney NR (2013) The Millennium Drought in southeast Australia (2001–2009): natural and human causes and implications for water resources, ecosystems, economy, and society. *Water Resources Research* **49**, 1040–1057.
- van Ittersum MK, Cassman KG, Grassini P, Wolf J, Tittonell P and Hochman Z (2013) Yield gap analysis with local to global relevance – A review. *Field Crops Research* **143**, 4–17.
- van Wart J, Grassini P and Cassman KG (2013) Impact of derived global weather data on simulated crop yields. *Global Change Biology* **19**, 3822–3834.
- Van Wart J, Grassini P, Yang H, Claessens L, Jarvis A and Cassman KG (2015) Creating long-term weather data from thin air for crop simulation modeling. *Agricultural and Forest Meteorology* **209–210**, 49–58.
- Verdon-Kidd DC, Kiem AS and Moran R (2014) Links between the Big Dry in Australia and hemispheric multi-decadal climate variability – implications for water resource management. *Hydrol. Earth Syst. Sci* **18**, 2235–2256.
- von Storch H and Zwiers F (1999) *Statistical Analysis in Climate Research*. Cambridge, UK: Cambridge University Press.
- Walsh RPD and Lawler DM (1981) Rainfall seasonality: description, spatial patterns and change through time. *Weather* **36**, 201–208.
- Watson J and Challinor A (2013) The relative importance of rainfall, temperature and yield data for a regional-scale crop model. *Agricultural and Forest Meteorology* **170**, 47–57.

- Williams J, Hook R and Hamblin A** (2002) *Agro-Ecological Regions of Australia: Methodology for Their Derivation and Key Issues in Resource Management*. Canberra, ACT, Australia: CSIRO Land and Water.
- Williamson G** (2007) *Rainfall Regime and Optimal Root Distribution in the Australian Perennial Grass, *Austrodanthonia Caespitosa* (Gaudich.)*. Adelaide: The University of Adelaide.
- Yao F, Xu Y, Lin E, Yokozawa M and Zhang J** (2007) Assessing the impacts of climate change on rice yields in the main rice areas of China. *Climatic Change* **80**, 395–409.
- Zhao G, Siebert S, Enders A, Rezaei EE, Yan C and Ewert F** (2015) Demand for multi-scale weather data for regional crop modeling. *Agricultural and Forest Meteorology* **200**, 156–171.