


Trajectories and risk factors of dementia progression: a memory clinic cohort followed up to 3 years from diagnosis

Trine Holt Edwin,^{1,2,3}  Bjørn Heine Strand,^{1,3,4} Karin Persson,^{1,2} Knut Engedal,^{1,2} Geir Selbæk,^{1,2,3} and Anne-Brita Knapskog²

¹Norwegian National Advisory Unit on Aging and Health, Vestfold Hospital Trust, Tønsberg, Norway

²Department of Geriatric Medicine, Oslo University Hospital, Oslo, Norway

³Faculty of Medicine, University of Oslo, Oslo, Norway

⁴Norwegian Institute of Public Health, Oslo, Norway

Abstract

Objectives: Patients with dementia follow different trajectories of progression. We aimed to investigate which factors at the time of diagnosis could predict trajectory group membership.

Design: Longitudinal observational study.

Setting: Specialized memory clinic, Oslo University Hospital in Norway.

Participants: Patients assessed at the memory clinic, between 12 January 2009 and 31 July 2016, who were registered in the Norwegian Registry of persons assessed for cognitive symptoms (NorCog) and diagnosed with dementia after the baseline examination period ($n = 442$). The patients were followed up to 3 years, with an average of 3.5 examinations.

Measurements: Clinical Dementia Rating Scale Sum of Boxes (CDR-SB), Mini-Mental State Examination (MMSE), the Consortium to Establish a Registry of Alzheimer's disease (CERAD) 10-item word list delayed recall, the Clock Drawing Test, (CDT) Trail Making Test A (TMT-A), and Neuropsychiatric Inventory Questionnaire (NPI-Q). Based on changes in scores on the CDR-SB, we used group-based trajectory modeling (GBTM) to explore the presence of trajectory groups. Multinomial logistic regression was used to explore whether a set of baseline variables could predict trajectory group membership.

Results: Three trajectory groups were identified, one with a slow progression rate and two with more-rapid progression. Rapid progression was associated with older age, lower cognitive function (MMSE and TMT-A), and more-pronounced neuropsychiatric symptoms (NPI-Q) at the time of diagnosis.

Conclusions: Our findings demonstrate the heterogeneity of dementia progression and describe risk factors for rapid progression, emphasizing the need for individual follow-up regimes. For future intervention studies, our results may guide the selection of patients.

Key words: dementia, memory clinics, neuropsychiatric symptoms, risk factors

Introduction

Dementia disorders progress, leading to disability and, ultimately, death (Strand *et al.*, 2018, 2019). Studies have indicated that subgroups of patients with dementia follow different trajectories of progression, with a large proportion progressing slowly, especially in the earlier stages (Eldholm *et al.*, 2018a; Melis *et al.*, 2019; Song *et al.*, 2018;

Wang *et al.*, 2019). Several risk factors for rapid progression at the time of diagnosis have been identified, but the findings are conflicting, and different approaches used and risk factors assessed make it challenging to compare results (Melis *et al.*, 2019). Nevertheless, findings have indicated that lower cognitive function, a heavier neuropsychiatric symptoms (NPS) burden, early appearance of extrapyramidal symptoms, and having signs of both Alzheimer's dementia (AD) and dementia with Lewy bodies (DLB) at baseline may predict a rapid decline (Blanc *et al.*, 2017; Song *et al.*, 2018; Tschanz *et al.*, 2011). Regarding age at dementia onset, the results vary, indicating both young and older age at onset as

Correspondence should be addressed to: Trine Holt Edwin, OUS HF Ullevål sykehus, Postboks 4956 Nydalen, 0424 Oslo, Norway. Phone: +4748050072. Emails: trine.holt.edwin@gmail.com; trine.edwin@aldringoghelse.no Received 09 Mar 2020; revision requested 05 Jun 2020; revised version received 05 Jul 2020; accepted 10 Aug 2020. First published online 20 Nov 2020

predictors of rapid progression (Melis *et al.*, 2019; Song *et al.*, 2018; Tschanz *et al.*, 2011). Progression rate seems to be affected by several factors, but studies have usually examined potential risk factors separately (Melis *et al.*, 2019).

Different methods and assessment scales are used to measure progression, thereby hindering comparison (Melis *et al.*, 2019; Wang *et al.*, 2019). Most studies have used the change in Mini-Mental State Examination (MMSE) or the Clinical Dementia Rating Scale (CDR), while changes in activities of daily living (ADLs), NPS load, and length of time to nursing home admission or to death have been used less frequently (Melis *et al.*, 2019). These outcomes measure different aspects of the dementia syndrome (Eldholm *et al.*, 2018a; Jutkowitz *et al.*, 2017); MMSE might be less sensitive in the earlier as well as the later stages of dementia (Musicco *et al.*, 2010; Song *et al.*, 2018), while the CDR, measuring both cognitive and functional abilities (Hughes *et al.*, 1982), is more appropriate for detecting changes during all stages. The statistical methods applied to investigate dementia progression also vary, complicating the comparison of studies even further (Melis *et al.*, 2019).

Identifying risk factors for progression and understanding the course of dementia are important for more-precise prognoses. This is essential in the care of patients, for informing policymakers, and in the search for effective disease-modifying treatments (Shah *et al.*, 2016). By identifying distinct trajectory groups, we study the heterogeneity of dementia progression in a Norwegian memory clinic cohort. We further investigate whether a set of baseline factors could predict trajectory group membership.

Methods

Participants

Patients assessed at the memory clinic, Oslo University Hospital, between 12 January 2009 and 31 July 2016, who were registered in the Norwegian Registry of persons assessed for cognitive symptoms (NorCog) and diagnosed with dementia after the baseline examination period (defined as up to 6 months from the first visit) (number of patients [n] = 668), were eligible for inclusion (see Figure S1 published as supplementary material online attached to the electronic version of this paper). Patients who did not receive any follow-up examinations at the memory clinic were excluded (n = 219). Patients received follow-up at various time intervals based on clinical judgment. The CDR was scored as a measure of cognitive and functional impairment (Hughes *et al.*, 1982) at each clinic visit (see section: Main study outcome), and in the

current study, patients were followed up to 3 years after diagnosis. Maximum follow-up was restricted to 3 years due to limited data after that period and to limit survival bias. During this time window, the patients received an average of 3.5 (standard deviation [SD] 1.7) examinations, including the baseline examination. Seven patients were excluded due to insufficient information to assess the CDR on at least two occasions.

All patients gave written informed consent to participate. The present project was approved by the Regional Ethics Committee (2015/1510 REK vest) and was performed in accordance with the Helsinki Declaration of 1975.

Diagnostic workup

All patients were assessed at baseline according to the standardized and comprehensive NorCog research protocol (Braekhus *et al.*, 2011) as a part of a routine clinical workup. This includes a cognitive test battery, detailed information about symptoms, number of years of education, medication use, and number of comorbid diagnoses within the following disease categories: pulmonary, cerebrovascular, cardiovascular, cancer, or diabetes mellitus (registered in a standardized way by a physician). All patients underwent a physical examination including blood sampling and, in most cases, a magnetic resonance imaging brain scan (MRI). According to clinical indication, cerebrospinal fluid core biomarkers (n = 198) amyloid β 42, total tau, and phosphorylated¹⁸¹ tau were measured, and positron emission tomography or single-photon emission computed tomography was performed (Braekhus *et al.*, 2011). These biomarkers were used in the diagnostic process. We included the following cognitive tests as predictors of progression rate: the MMSE (0–30; lower values indicate greater cognitive impairment) (Folstein *et al.*, 1975); the Consortium to Establish a Registry of Alzheimer's Disease (CERAD) 10-item word list delayed recall (CERAD-DR) (0–10; lower values indicate poorer episodic memory function) (Morris *et al.*, 1989); the Clock Drawing Test (CDT) (Mainland *et al.*, 2014) (with pathological cutoff $\leq 3/5$ points [Shulman *et al.*, 1986]); and the Trail Making Test A (TMT-A) (Reitan, 1958) (based on age-adjusted cutoff of -2 SD [Mitrushina *et al.*, 2005]). NPS were assessed using the Neuropsychiatric Inventory Questionnaire (NPI-Q) (Kaufers *et al.*, 2000), a proxy-based short form of the Neuropsychiatric Inventory (NPI) (Cummings *et al.*, 1994), and the NPI-Q severity score (0–36; higher values indicate more-severe NPS burden) was included in the analyses.

Based on all available information from the baseline examinations, diagnoses were made by one of the researchers who also is an experienced clinician.

In inconclusive cases ($n=61$), two of the other researchers who also are experienced clinicians were consulted. The National Institute on Aging and the Alzheimer's Association (NIA-AA) diagnostic criteria were used to diagnose all-cause dementia (McKhann *et al.*, 2011). AD and etiologically mixed AD (AD mixed) were diagnosed according to the NIA-AA criteria for Alzheimer's disease dementia (McKhann *et al.*, 2011). Parkinson's disease dementia (PDD) and DLB were diagnosed using the clinical diagnostic criteria for dementia associated with Parkinson's disease (Emre *et al.*, 2007) and the revised criteria from the fourth consensus report of the DLB Consortium (McKeith *et al.*, 2017), respectively. Frontotemporal dementia was diagnosed using the International Consortium Revised Guidelines for the diagnosis of behavioral-variant frontotemporal dementia (bv-FTD) (Rascovsky *et al.*, 2011) and classification of primary progressive aphasia (PPA) (Gorno-Tempini *et al.*, 2011). If none of these were present, the etiology was denoted as dementia caused by other etiology (other).

Main study outcome: CDR

As a global measure of cognitive and functional impairment, the CDR (Hughes *et al.*, 1982) was scored by the same researcher who is a certified CDR rater (Knight ADRC) based on all information from the patient's record at baseline and at every follow-up examination. In equivocal cases, two additional researchers who are experienced CDR raters were consulted. The CDR rates a person's cognitive ability in relation to past performance in six cognitive and functional categories: memory, orientation, judgment and problem-solving, community affairs, home and hobbies, and personal care. Each item was given a score of 0, 0.5, 1, 2, or 3 according to the severity of the decline. The global score is based on an algorithm that gives priority to the memory item, ranging from CDR 0 (no dementia) to CDR 3 (severe dementia) (Hughes *et al.*, 1982). In research, the items are often added together as the CDR sum of boxes (CDR-SB) to form a continuous scale (0–18, higher scores indicate more-severe decline) (O'Bryant *et al.*, 2008).

Statistical analyses

Analyses were performed using Stata/IC 15.1 (Stata-Corp LLC 2018, Stata Statistical Software, revision 17 December 2018, College Station, TX, USA). To compare the difference in baseline characteristics and mortality between groups, independent *t*-tests and Pearson's χ^2 tests were used for continuous and categorical data, respectively. For participants who

died during the 3 years of follow-up, date of death was linked to the cohort using the Cause of Death Registry (Norwegian Institute of Public Health, 2018). To explore the presence of distinct trajectory groups based on the change in the CDR-SB over time, we first applied group-based trajectory modeling (GBTM) (Nagin and Odgers, 2010), using the Stata package Traj (Jones and Nagin, 2013). The number and shapes of trajectory groups was decided guided by model fit as well as clinical relevance, as suggested by Nagin and Odgers, ensuring sufficient class size and clinical usefulness (Nagin and Odgers, 2010). More specifically, we used the Bayesian information criterion (BIC) to estimate the goodness-of-fit of the different models; values closest to zero indicate better fit. Furthermore, we ensured the posterior probability of group membership to be at least 0.7 and odds of correct classification (OCC) to be above 5 (see Table S1 published as supplementary material online attached to the electronic version of this paper). We also checked that the confidence intervals (CIs) of the trajectory groups did not overlap, indicating a good model fit (Nagin and Odgers, 2010).

Next, the three-level trajectory group membership categorical variable was applied as the outcome variable in multinomial logistic regression to explore whether a set of baseline characteristics could predict trajectory group membership. We ensured that Spearman's intercorrelations between the explanatory variables were not ≥ 0.5 , and thus, the TMT-B was removed due to high intercorrelation with the TMT-A. A set of regression models was fitted, all adjusted for sex, age, years of education, dementia etiology, and comorbidity (model 1), by separately including the variables of interest: MMSE (model 2), NPI-Q (model 3), TMT-A (model 4), CDT (model 5), and CERAD-DR (model 6). In the final model, all variables were included (model 7). Only those with a complete set of baseline variables were included in the regression analyses ($n=372$). The fit of the different models was assessed using likelihood-ratio tests for nested models.

Results

Sample characteristics

Mean age at diagnosis was 70.5 years (range 46–89 years); 51% were females (Table 1). Most patients had AD (AD or AD mixed) (73%). Mean MMSE at baseline was 23.1 (SD 4.1), mean CDR-SB was 5.1 (SD 2.3), and most patients (54%) did not have any registered comorbidity.

Those without follow-up examinations were older, and fewer were living with a partner. In addition, they had lower baseline cognitive functioning, more-severe

Table 1. Descriptive statistics of patients who did and did not receive follow-up examinations

CHARACTERISTICS	WITH FOLLOW-UP	WITHOUT FOLLOW-UP	P-VALUE
	(N = 442)	(N = 219)	
Age, years	70.5 (8.1)	73.6 (9.4)	<0.001
Young onset, <65 years, N (%)	124 (28.1)	48 (21.9)	0.091
Female, N (%)	225 (50.9)	104 (47.5)	0.408
Married/living together with partner, N (%)	323 (73.1)	137 (62.6)	0.006
Years of education	12.8 (3.7)	12.3 (3.8)	0.141
Dementia etiology, N (%)			
AD	229 (51.8)	90 (41.1)	0.009
AD mixed	93 (21.0)	51 (23.3)	0.510
DLB/PDD	49 (11.1)	29 (13.3)	0.419
FTD	29 (6.6)	16 (7.3)	0.720
Other	42 (9.5)	33 (15.1)	0.034
Comorbidity present (≥ 1 disease), N (%)	195 (46)	98 (46)	0.935
Pulmonary disease, N (%)	5 (1.1)	6 (2.8)	0.128
Cerebrovascular disease, N (%)	57 (12.9)	44 (20.1)	0.016
Cardiovascular disease, N (%)	137 (31.0)	73 (33.3)	0.543
Cancer, N (%)	42 (9.5)	11 (5.0)	0.046
Diabetes mellitus, N (%)	38 (8.6)	19 (8.6)	0.973
MMSE	23.1 (4.1)	21.6 (4.4)	<0.001
NPI-Q symptoms	3.7 (2.6)	4.5 (2.6)	0.001
NPI-Q severity	5.8 (5.3)	7.2 (5.6)	0.002
TMT-A (worse than -2 SD), N (%)	206 (48.1)	127 (62.3)	0.001
CDT ($\leq 3/5$ points), N (%)	259 (58.9)	148 (69.5)	0.009
CERAD-DR	1.6 (1.9)	1.7 (1.9)	0.549
Follow-up, years	2.2 (1.5)	*	*
CDR sum of boxes	5.1 (2.3)	7.1 (3.1)	<0.001
CDR sum of boxes yearly change (mean, SE)	0.9 \pm 0.06	*	*
Mortality the first 3 years after the diagnosis (per 1000 person-years)	29.2	95.8	<0.001

Note. The values are presented as means (standard deviation, SD) unless otherwise specified. The descriptive means of the groups were compared using independent *t*-tests, and proportions were compared using Pearson's χ^2 tests. Bold values highlight significant differences ($p \leq 0.05$).

Abbreviations: N, number of patients; SD, standard deviation; SE, standard error; AD, Alzheimer's dementia; AD mixed, etiologically mixed Alzheimer's dementia; DLB, dementia with Lewy bodies; PDD, Parkinson's disease dementia; FTD, frontotemporal dementia; MMSE, Mini-Mental State Examination; NPI-Q, Neuropsychiatric Inventory Questionnaire; TMT-A, Trail Making Test A; CDT, the Clock Drawing Test; CERAD-DR, the Consortium to Establish a Registry of Alzheimer's Disease 10-item word list delayed recall; CDR, Clinical Dementia Rating Scale.

*Not applicable.

NPS burden, more-severe dementia, and a higher mortality compared to those with follow-up examinations (Table 1). Number of comorbidities, were similar between the groups, but in the group who was not followed up, more had cerebrovascular disease ($p = 0.016$) and less had cancer ($p = 0.046$) (Table 1).

Trajectory groups

Three distinct progression-trajectory groups were identified (Figure 1). Group 1 had the best baseline functioning and the slowest progression rate (average baseline CDR-SB = 3.5 and average annual change in CDR-SB = 0.7). Groups 2 and 3 both progressed faster (annual change in

CDR-SB = 2.4 and 2.9, respectively), and their baseline level of dementia differed, with group 3 having more-advanced impairment (CDR-SB = 5.3 and 8.2, respectively) (Table 2).

During follow-up, mortality (per 1000 person-years) for the three groups were 17.0 (95% CI 8.2, 32.6), 19.6 (95% CI 9.8, 39.3), and 70.6 (95% CI 44.4, 112.0), respectively. Thus, patients in group 3 had more than 4 times the mortality of those in group 1 (Table 2). No differences were found in the number of patients with pulmonary disease ($p = 0.968$), cerebrovascular disease ($p = 0.899$), cardiovascular disease ($p = 0.535$), or cancer ($p = 0.104$) between the trajectory groups. There were, however, more patients with diabetes mellitus in the rapidly progressing group ($p = 0.005$).

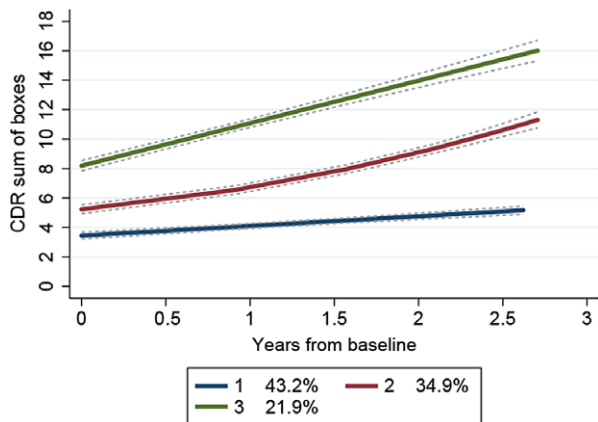


Figure 1. Three trajectory groups based on change in CDR sum of boxes over time. Note. Trajectory groups, using GBTM, with the trajectory shapes 1 2 1 (1 = linear, 2 = quadratic). The proportions (%) are based on the maximum probability assignment rule. Group 1 (blue); number of patients (n) = 195 (43.2%), posterior probability of group membership = 0.92, and OCC = 14.7. Group 2 (red); n = 153 (34.9%) posterior probability of group membership = 0.88, and OCC = 13.4. Group 3 (green); n = 94 (21.9%), posterior probability of group membership = 0.94, and OCC = 62.6. CDR, clinical dementia rating scale. Production: File format TIFF, using Stata/IC 15.1 StataCorp LLC 2018 on Windows 10 Pro.

Predictors of rapid progression

BASELINE FACTORS ASSOCIATED WITH TRAJECTORY GROUP 2 MEMBERSHIP (MORE-RAPID PROGRESSION)

In the fully adjusted model (Table 4), using group 1 as a reference, we found that belonging to group 2 was associated with higher age (relative risk ratio [RRR] 1.04 [95% CI 1.00, 1.07]), lower score on the MMSE (RRR 0.86 [95% CI 0.79, 0.94]), and worse performance on the TMT-A (RRR 0.35 [95% CI 0.20, 0.61]) at the baseline examination. For every single-point increase in severity on the NPI-Q, the risk of belonging to group 2 increased by 7% (RRR 1.07 [95% CI 1.02, 1.13]). Further, belonging to group 2 was associated with poor performance on the CDT in the crude model (RRR 0.45 [95% CI 0.27, 0.73]) (Table 3), but this was no longer significant in the fully adjusted model. No significant differences were found in regard to sex, years of education, dementia etiology, comorbidity, or performance on CERAD-DR between group 1 and the more-rapidly progressing group 2 in either model.

BASELINE FACTORS ASSOCIATED WITH TRAJECTORY GROUP 3 MEMBERSHIP (MOST-RAPIDLY PROGRESSING GROUP)

In the fully adjusted model (Table 4), using group 1 as a reference, we found that belonging to group 3 was associated with higher age (RRR 1.06 [95% CI

1.01, 1.11]), lower score on the MMSE (RRR 0.68 [95% CI 0.61, 0.77]), and worse performance on the TMT-A (RRR 0.39 [95% CI 0.18, 0.84]) at the baseline examination. For every single-point increase in severity on the NPI-Q, the risk of belonging to group 3 increased by 16% (RRR 1.16 [95% CI 1.09, 1.24]). Belonging to group 3 was associated with less education (model 1) (RRR 0.92 [95% CI 0.85, 0.99]), poor performance on the CDT (model 5) (RRR 0.26 [95% CI 0.14, 0.48]), and on the CERAD-DR (model 6) (RRR 0.77 [95% CI 0.63, 0.93]) in the crude models (Table 3), but these were no longer significant in the fully adjusted model. There were no significant differences in sex, dementia etiology, or comorbidity between the groups (group 1 vs. group 3) in either model.

WHICH BASELINE PREDICTORS WERE MORE IMPORTANT FOR PREDICTING TRAJECTORY GROUP MEMBERSHIP?

The MMSE ($p < 0.001$), NPI-Q severity score ($p < 0.001$), and TMT-A ($p = 0.001$) were the most important single predictors of dementia progression.

Discussion

In a sample of patients with dementia examined at a specialized memory clinic in Norway and followed up to 3 years after diagnosis, we found three distinct trajectory groups of dementia progression; one group progressed slowly, while two other groups had a more-rapid decline. Rapid progression was associated with older age, lower cognitive function, and more-pronounced NPS at the time of diagnosis.

Our findings are in agreement with those of other studies showing heterogeneity in the progression rate of patients with dementia (Eldholm *et al.*, 2018a; Haaksma *et al.*, 2018; Melis *et al.*, 2019; Song *et al.*, 2018; Wang *et al.*, 2019). The trajectory groups in our sample differed regarding baseline cognitive and functional abilities, indicating the patients were at different stages of dementia at baseline. A meta-analysis from 2018 found that moderate dementia, defined as a score on the MMSE between 17 and 21, was associated with rapid cognitive decline, defined as a yearly change in MMSE ≥ 3 points (follow-up time ranging from 61.2 days to 9 years) (Song *et al.*, 2018). This could indicate that cognitive decline reaches a threshold, after which it accelerates and then subsequently slows in severe dementia when there is less cognitive function to be lost (Musicco *et al.*, 2010; Song *et al.*, 2018). We did, however, find significant baseline

Table 2. Descriptive statistics of the three trajectory groups

CHARACTERISTICS	GROUP 1 (N = 195)	GROUP 2 (N = 153)	GROUP 3 (N = 94)
Age, years	69.7 (7.9)	71.3 (7.6)	70.7 (9.0)
Young onset, <65 years, N (%)	64 (32.8)	34 (22.2)	26 (27.7)
Female, N (%)	89 (45.6)	84 (54.9)	53 (55.3)
Married/living together with partner, N (%)	151 (77.4)	106 (69.3)	66 (70.2)
Years of education	13.2 (3.6)	12.8 (3.7)	12.0 (3.9)
Dementia etiology, N (%)			
AD	106 (54.4)	72 (47.1)	51 (54.3)
AD mixed	33 (16.9)	36 (23.5)	24 (25.5)
DLB/PDD	19 (9.7)	22 (14.4)	8 (8.5)
FTD	12 (6.2)	9 (5.9)	8 (8.5)
Other	25 (12.8)	14 (9.2)	3 (3.2)
Comorbidity present (≥ 1 disease), N (%)	93 (49.2)	67 (46.3)	34 (36.6)
Pulmonary disease, N (%)	2 (1.0)	2 (1.3)	1 (1.1)
Cerebrovascular disease, N (%)	25 (12.8)	21 (13.7)	11 (11.7)
Cardiovascular disease, N (%)	61 (31.3)	51 (33.3)	25 (26.6)
Cancer, N (%)	25 (12.8)	10 (6.5)	7 (4.5)
Diabetes mellitus, N (%)	9 (4.6)	14 (9.2)	15 (16.0)
MMSE	24.9 (2.8)	23.0 (3.4)	19.5 (5.0)
NPI-Q symptoms	3.0 (2.4)	3.8 (2.5)	4.9 (2.6)
NPI-Q severity	4.5 (4.6)	5.9 (5.0)	8.3 (6.0)
TMT-A (worse than -2 SD), N (%)	63 (33.0)	88 (58.7)	55 (63.2)
CDT ($\leq 3/5$ points), N (%)	88 (45.6)	99 (64.7)	72 (76.6)
CERAD-DR	1.9 (2.0)	1.5 (1.8)	0.9 (1.3)
CDR sum of boxes	3.5 (1.0)	5.3 (1.4)	8.2 (2.2)
CDR sum of boxes yearly change (mean, SE)	0.7 (0.1)	2.4 (0.6)	2.9 (0.2)
Mortality the first 3 years after the diagnosis (per 1000 person-years)	17.0	19.6	70.6

Note. The values are presented as means (standard deviation, SD) unless otherwise specified.

Abbreviations: N, number of patients; SD, standard deviation; SE, standard error; AD, Alzheimer's dementia; AD mixed, etiologically mixed Alzheimer's dementia; DLB, dementia with Lewy bodies; PDD, Parkinson's disease dementia; FTD, frontotemporal dementia; MMSE, Mini-Mental State Examination; NPI-Q, Neuropsychiatric Inventory Questionnaire; TMT-A, Trail Making Test A; CDT, the Clock Drawing Test; CERAD-DR, the Consortium to Establish a Registry of Alzheimer's Disease 10-item word list delayed recall; CDR, Clinical Dementia Rating Scale.

differences between the trajectory groups, even after adjusting for cognition, indicating that the groups do reflect different trajectories of progression. Like us, Haaksma *et al.* examined the progression of dementia using the CDR-SB over 3 years in a large clinical cohort. They also found three distinct trajectory groups, with a large group (63%) progressing slowly. Their study differed from ours in several aspects; only AD patients were included; participants were older (79.4 vs. 70.5 years), baseline cognitive and functional abilities were better (CDR-SB 3.8 vs. 5.1), and the methods differed (Haaksma *et al.*, 2018). Still, our similar results strengthen the belief that these three trajectory groups are clinically relevant.

In our sample, we found that older age at baseline could predict a more-rapid progression rate. In the literature, the impact of age at onset has been inconclusive indicating that onset at both a younger and older age could predict rapid progression (Haaksma *et al.*, 2018; Lanctot *et al.*, 2017; Melis *et al.*, 2019;

Song *et al.*, 2018). This discrepancy might be due to different methods used or to differences in patient characteristics. Even though we did not find any significant differences in the number of baseline comorbidities between the groups, older patients are at risk of concomitant incidents and frailty, and this is suggested to have at least a short-term impact on progression rate (Haaksma *et al.*, 2017). Older patients also have an increased risk of experiencing delirium during the follow-up period (Vasilevskis *et al.*, 2012), and delirium superimposed on dementia has been shown to accelerate cognitive decline (Krogseth *et al.*, 2016). According to the Norwegian guidelines on dementia, specialist healthcare services are responsible for assessing patients with cognitive symptoms who are younger (guiding recommendation of ≤ 65 years), experiencing atypical symptoms or having other complicating factors (Norwegian Directorate of Health, 2017). Therefore, our older patients might have had a more atypical presentation, which has

Table 3. Multinomial logistic regression small models (models 1–6) assessing trajectory group membership by baseline predictors

SMALL MODELS 1–6 (N = 372)	GROUP 2 VERSUS GROUP 1			GROUP 3 VERSUS GROUP 1		
	RRR	95% CI	p-value	RRR	95% CI	p-value
Characteristics						
Sex*						
Female	1.0			1.0		
Male	0.72	(0.47, 1.40)	0.398	0.97	(0.52, 1.82)	0.927
Age*	1.03	(1.00, 1.06)	0.127	1.03	(1.00, 1.07)	0.069
Years of education*	0.98	(0.92, 1.05)	0.653	0.92	(0.85, 0.99)	0.037
Dementia etiology*						
AD	1.0			1.0		
AD mixed	1.50	(0.80, 2.78)	0.207	1.56	(0.77, 3.15)	0.218
DLB/PDD	1.63	(0.80, 3.32)	0.175	0.88	(0.35, 2.24)	0.787
FTD	1.34	(0.49, 3.75)	0.552	1.21	(0.34, 4.27)	0.764
Other	0.54	(0.20, 1.48)	0.235	0.49	(0.13, 1.83)	0.293
Comorbidity*						
No comorbidity	1.0			1.0		
≥ 1 disease	0.86	(0.53, 1.40)	0.550	0.68	(0.38, 1.20)	0.180
MMSE†	0.82	(0.76, 0.89)	<0.001	0.66	(0.59, 0.73)	<0.001
NPI severity‡	1.08	(1.02, 1.13)	0.006	1.15	(1.09, 1.22)	<0.001
TMT-A§						
– 2 SD or worse	1.0			1.0		
Better than – 2 SD	0.27	(0.16, 0.45)	<0.001	0.19	(0.10, 0.35)	<0.001
CDT¶						
≤ 3/5 points	1.0			1.0		
≥ 4/5 points	0.45	(0.27, 0.73)	0.001	0.26	(0.14, 0.48)	<0.001
CERAD-DR#	0.95	(0.83, 1.10)	0.519	0.77	(0.63, 0.93)	0.008

Note. Multinomial logistic regression models (models 1–6) were used to assess predictors of trajectory group membership, by separately testing baseline covariates of interest. All models were adjusted by sex, age, years of education, dementia etiology, and comorbidity. Bold values highlight significant differences ($p \leq 0.05$).

Abbreviations: N, number of patients; SD, standard deviation; RRR, relative risk ratio; CI, confidence interval; AD, Alzheimer's dementia; AD mixed, etiologically mixed Alzheimer's dementia; DLB, dementia with Lewy bodies; PDD, Parkinson's disease dementia; FTD, frontotemporal dementia; MMSE, Mini-Mental State Examination; NPI-Q, Neuropsychiatric Inventory Questionnaire; TMT-A, Trail Making Test A; CDT, the Clock Drawing Test; CERAD-DR, the Consortium to Establish a Registry of Alzheimer's Disease 10-item word list delayed recall.

* Model 1.

† Model 2.

‡ Model 3.

§ Model 4.

¶ Model 5.

Model 6.

been shown to predict rapid decline (Scheltens *et al.*, 2018). Our findings also suggest cognitive functions such as psychomotor retardation, but not memory loss could predict a rapid decline. This supports the belief that non-memory deficits are a sign of a more-aggressive disease process, at least in AD (Scheltens *et al.*, 2018).

Rapid progression of dementia was associated with more-severe NPS load at baseline, after adjusting for cognitive test results, age, sex, education, dementia etiology, and comorbidity. Other studies have also indicated NPS burden as a predictor of accelerated cognitive and functional decline (Lanctot *et al.*, 2017; Poulin *et al.*, 2017; Song *et al.*, 2018), and increased risk of early institutionalization, poor quality of life and mortality (Lanctot *et al.*, 2017). Moreover, NPS has been shown to increase

caregiver burden (Reed *et al.*, 2020). Even though NPS can occur at all stages of dementia, the severity has been shown to increase in the more-advanced stages (Jutkowitz *et al.*, 2017; Lanctot *et al.*, 2017; Lyketsos *et al.*, 2002; Poulin *et al.*, 2017). This could reflect that NPS is a result of more-pronounced neurodegeneration affecting the regulation of behavior (Lanctot *et al.*, 2017). However, since the progression of NPS and cognitive decline seem to follow different trajectories, and since NPS is a risk factor for progression even after adjusting for cognitive decline, we believe it is a poor prognostic factor in dementia (Poulin *et al.*, 2017; Tschanz *et al.*, 2011). In the present study, we did not study the individual NPS, although the symptoms probably have different underlying pathologies and the frequency may vary across dementia severity

Table 4. Fully adjusted multinomial logistic regression model (model 7), assessing trajectory group membership by baseline predictors

MODEL 7 (N = 372)	GROUP 2 VERSUS GROUP 1			GROUP 3 VERSUS GROUP 1		
Characteristics	RRR	95% CI	p-value	RRR	95% CI	p-value
Sex						
Female	1.0			1.0		
Male	0.91	(0.52, 1.59)	0.737	1.34	(0.64, 2.81)	0.442
Age	1.04	(1.00, 1.07)	0.028	1.06	(1.01, 1.11)	0.013
Years of education	1.04	(0.96, 1.12)	0.337	1.03	(0.94, 1.13)	0.559
Dementia etiology						
AD	1.00			1.00		
AD mixed	1.65	(0.84, 3.23)	0.144	2.27	(0.96, 5.38)	0.062
DLB/PDD	1.21	(0.54, 2.71)	0.650	0.79	(0.24, 2.59)	0.693
FTD	1.59	(0.54, 4.72)	0.404	1.29	(0.25, 6.67)	0.765
Other	0.54	(0.18, 1.62)	0.272	1.18	(0.26, 5.35)	0.826
Comorbidity						
No comorbidity	1.00			1.00		
≥ 1 disease	1.07	(0.63, 1.80)	0.809	0.93	(0.46, 1.87)	0.833
MMSE	0.86	(0.79, 0.94)	0.001	0.68	(0.61, 0.77)	<0.001
NPI-Q severity	1.07	(1.02, 1.13)	0.010	1.16	(1.09, 1.24)	<0.001
TMT-A						
– 2 SD or worse	1.00			1.00		
Better than – 2 SD	0.35	(0.20, 0.61)	<0.001	0.39	(0.18, 0.84)	0.016
CDT						
≤ 3/5 points	1.00			1.00		
≥ 4/5 points	0.80	(0.46, 1.40)	0.439	0.90	(0.41, 1.95)	0.787
CERAD-DR	0.98	(0.84, 1.15)	0.817	0.92	(0.72, 1.18)	0.526

Note. A fully adjusted multinomial logistic regression model was used to assess predictors of trajectory group membership by baseline covariates. Bold values highlight significant differences ($P \leq 0.05$).

Abbreviations: N, number of patients; SD, standard deviation; RRR, relative risk ratio; CI, confidence interval; AD, Alzheimer's dementia; AD mixed, etiologically mixed Alzheimer's dementia; DLB, dementia with Lewy bodies; PDD, Parkinson's disease dementia; FTD, frontotemporal dementia; MMSE, Mini-Mental State Examination; NPI-Q, Neuropsychiatric Inventory Questionnaire; TMT-A, Trail Making Test A; CDT, the Clock Drawing Test; CERAD-DR, the Consortium to Establish a Registry of Alzheimer's Disease 10-item word list delayed recall.

(Siafarikas *et al.*, 2018). The effect of individual NPS on dementia progression should, therefore, be investigated further. It is also unclear whether interventions in regard to NPS will affect the progression rate (Lanctot *et al.*, 2017).

Among those being followed, the rapid progressors had the highest mortality (Table 2), but those without follow-up examinations had even higher mortality and more NPS (Table 1). More advanced dementia or possibly the use of antipsychotics (Schneider *et al.*, 2005) could have contributed to this increased mortality. Those without follow-up had more cardiovascular disease ($p = 0.016$) which could have contributed to increased mortality in this group. On the contrary, they had less cancer, but our data do not provide information about the type and severity of the malignancy. There were no differences in the amount of cardiovascular disease between the trajectory groups ($p = 0.535$). Interestingly, more of the rapid progressors had diabetes mellitus, which may have contributed to higher mortality (Xu *et al.*, 2018), but which did not

increase the risk of rapid dementia progression in a Systematic Review and Meta-Analysis (Song *et al.*, 2018). Comorbid diseases probably have different effects on the progression rate of dementia, and this deserves further attention.

There were no significant differences in progression between the various dementia etiologies in our sample, but there was a trend toward higher risk of belonging to group 3 with the diagnosis AD mixed compared to AD alone (RRR 2.27 [95% CI 0.96, 5.38] $p = 0.062$). A study by Blanc *et al.* showed that having both AD and DLB together could predict a more-rapid progression compared to having either one alone (Blanc *et al.*, 2017). The progression was, however, measured by change in the MMSE, which is not equivalent to change in the CDR-SB since the CDR considers both cognitive and functional abilities (Hughes *et al.*, 1982). In a study by Eldholm *et al.*, no association was found between progression rate (measured by change in the CDR-SB) and vascular comorbidity in patients with AD (Eldholm *et al.*, 2018b). Since most of our patients with a

diagnosis of AD mixed had cerebrovascular disease as the concomitant condition (92%), this might explain why we did not find a significant result. A study by Strand *et al.*, from the NorCog Registry, found differences in reduced life expectancy between the various causes of dementia, with the greatest loss in patients with vascular dementia, DLB, and PDD (Strand *et al.*, 2018). Decline in the CDR and reduced life expectancy can both be used to indicate the prognosis of a patient, but they are also not entirely comparable. In addition, as most of the patients in the present study were affected by AD or AD mixed presentation (73%), we might not have had sufficient power to show a potential difference within the non-AD populations.

Higher education has previously been shown to predict a more-rapid decline (Haaksma *et al.*, 2018; Song *et al.*, 2018), but we found no such association.

A limitation in our study is that the study population is a selected group who were referred to a specialized memory clinic and, therefore, are more likely to be younger, have more-complex symptoms, and possibly more education than the population at large. However, we do believe the results could be representative of a similar memory clinic population. The CDR-SB, although widely used, was not originally designed to measure progression, and we scored the CDR, *post hoc*, based on patient records. The ratings were, however, conducted by the same experienced and certified rater, thus ensuring consistency and reproducibility. Fifty-four percent of the patients did not have any registered comorbidity. Even though our population is quite young and has little comorbidity, we fear there is a risk of underreporting. However, since the number of comorbidities are low in all the groups, we expect this underreporting is evenly distributed. Lastly, we do not have information on concomitant incidences such as cerebrovascular events like stroke, or delirium during the follow-up period. Even though our population had little comorbidity at the time of diagnosis, such incidences could have accelerated the progression rate in some patients (Haaksma *et al.*, 2017).

A strength of this study is that the sample was thoroughly examined, and all diagnoses were set according to research criteria based on an extensive examination protocol and biomarkers (most participants underwent MRI of the brain). Another advantage is the application of GBTM as a statistical tool in the present study. With GBTM, the trajectory groups are not based on *ex ante* characteristics; rather, it uses the actual variations in the data as a statistical tool to group those with similar development (Nagin and Odgers, 2010).

Conclusion

In a clinical cohort comprising patients with dementia, we identified three distinct trajectory groups of progression: one group with slow progression and two with more-rapid progression rates. Rapid progression was associated with older age, lower cognitive function, and more-pronounced NPS at the time of diagnosis. This knowledge can guide clinicians and policymakers in estimating prognoses and in planning for the future care of patients with dementia. Our findings also demonstrate the heterogeneity in dementia progression and the need for individual follow-up regimes. For future intervention studies, our results may guide the selection of patients and the follow-up period needed, since almost half of the patients progressed slowly up to 3 years after the diagnosis. Our results also show that, particularly in earlier stages of dementia, estimating prognoses can be difficult. Therefore, we need to search for other factors, such as biomarkers, that can predict the different trajectories of disease progression earlier in the disease process.

Description of authors' roles

Conceptualization: Knut Engedal, Geir Selbæk, Bjørn Heine Strand, and Anne-Brita Knapskog. Data curation: Trine Holt Edwin. Formal analysis: Trine Holt Edwin, Bjørn Heine Strand, and Anne-Brita Knapskog. Investigation: Trine Holt Edwin, Anne-Brita Knapskog, and Karin Persson. Project administration: Geir Selbæk, Bjørn Heine Strand. Supervision: Anne-Brita Knapskog, Bjørn Heine Strand, and Geir Selbæk. Visualization: Trine Holt Edwin, Bjørn Heine Strand. Writing – original draft: Trine Holt Edwin, Bjørn Heine Strand, and Anne-Brita Knapskog. Writing – review and editing: Trine Holt Edwin, Bjørn Heine Strand, Karin Persson, Knut Engedal, Geir Selbæk, and Anne-Brita Knapskog.

Conflict of interest

Dr. Edwin, Dr. Knapskog, and Dr. Persson reports work with Roche BN29553 and with Boehringer-Ingelheim 1346.0023, outside the submitted work. The remaining authors have no conflicts of interest to declare.

Source of funding

This study was funded by the Norwegian Health Association, which was not involved in any part of

the planning, conducting the study or writing the article. The authors have had full control of all the primary data. Legal restrictions, imposed by the registry owners and the ethical committee, prevent us from publicly sharing our de-identified data set due to sensitive patient information. Data may be requested from the Norwegian Register of Persons Assessed for Cognitive Symptoms (contact: post@aldringoghelse.no). Availability is dependent on approval from the Regional Ethics Committee for medical research in the South-East of Norway (contact: post@helseforsikring.etikkom.no).

Acknowledgments

This study was funded by the Norwegian Health Association, which was not involved in any part of planning and conducting the study or writing the paper. We would like to thank NorCog for their contribution to the study.

Supplementary material

To view supplementary material for this article, please visit <https://doi.org/10.1017/S1041610220003270>.

References

- Blanc, F. *et al.*** (2017). Long-term cognitive outcome of Alzheimer's disease and dementia with Lewy bodies: dual disease is worse. *Alzheimer's Research and Therapy*, 9, 47. doi: [10.1186/s13195-017-0272-8](https://doi.org/10.1186/s13195-017-0272-8)
- Braekhus, A., Ulstein, I., Wyller, T. B. and Engedal, K.** (2011). The Memory Clinic -outpatient assessment when dementia is suspected. *Tidsskr Nor Laegeforen*, 131, 2254–2257. doi: [10.4045/tidsskr.11.0786](https://doi.org/10.4045/tidsskr.11.0786)
- Cummings, J. L., Mega, M., Gray, K., Rosenberg-Thompson, S., Carusi, D. A. and Gornbein, J.** (1994). The Neuropsychiatric Inventory: comprehensive assessment of psychopathology in dementia. *Neurology*, 44, 2308–2314.
- Eldholm, R. S. *et al.*** (2018a). Progression of Alzheimer's disease: a longitudinal study in Norwegian memory clinics. *Journal of Alzheimer's Disease*, 61, 1221–1232. doi: [10.3233/JAD-170436](https://doi.org/10.3233/JAD-170436)
- Eldholm, R. S. *et al.*** (2018b). Association between vascular comorbidity and progression of Alzheimer's disease: a two-year observational study in Norwegian memory clinics. *BMC Geriatrics*, 18, 120. doi: [10.1186/s12877-018-0813-4](https://doi.org/10.1186/s12877-018-0813-4)
- Emre, M. *et al.*** (2007). Clinical diagnostic criteria for dementia associated with Parkinson's disease. *Movement Disorders*, 22, 1689–1707; quiz 1837. doi: [10.1002/mds.21507](https://doi.org/10.1002/mds.21507)
- Folstein, M. F., Folstein, S. E. and Mchugh, P. R.** (1975). "Mini-mental state". A practical method for grading the cognitive state of patients for the clinician. *Journal of Psychiatric Research*, 12, 189–198.
- Gorno-Tempini, M. L. *et al.*** (2011). Classification of primary progressive aphasia and its variants. *Neurology*, 76, 1006–1014. doi: [10.1212/WNL.0b013e31821103e6](https://doi.org/10.1212/WNL.0b013e31821103e6)
- Haaksma, M. L., Calderon-Larranaga, A., Olde Rikkert, M. G. M., Melis, R. J. F. and Leoutsakos, J. S.** (2018). Cognitive and functional progression in Alzheimer disease: a prediction model of latent classes. *International Journal of Geriatric Psychiatry*, 33, 1057–1064. doi: [10.1002/gps.4893](https://doi.org/10.1002/gps.4893)
- Haaksma, M. L. *et al.*** (2017). Comorbidity and progression of late onset Alzheimer's disease: a systematic review. *PLoS One*, 12, e0177044. doi: [10.1371/journal.pone.0177044](https://doi.org/10.1371/journal.pone.0177044)
- Hughes, C. P., Berg, L., Danziger, W. L., Coben, L. A. and Martin, R. L.** (1982). A new clinical scale for the staging of dementia. *British Journal of Psychiatry*, 140, 566–572.
- Jones, B. L. and Nagin, D. S.** (2013). A note on a stata plugin for estimating group-based trajectory models. *Sociological Methods and Research*, 42, 608–613. doi: [10.1177/0049124113503141](https://doi.org/10.1177/0049124113503141)
- Jutkowitz, E., Maclehose, R. F., Gaugler, J. E., Dowd, B., Kuntz, K. M. and Kane, R. L.** (2017). Risk factors associated with cognitive, functional, and behavioral trajectories of newly diagnosed dementia patients. *Journals of Gerontology Series A: Biological Sciences and Medical Sciences*, 72, 251–258. doi: [10.1093/geron/glw079](https://doi.org/10.1093/geron/glw079)
- Kaufert, D. I. *et al.*** (2000). Validation of the NPI-Q, a brief clinical form of the Neuropsychiatric Inventory. *Journal of Neuropsychiatry and Clinical Neurosciences*, 12, 233–239. doi: [10.1176/jnp.12.2.233](https://doi.org/10.1176/jnp.12.2.233)
- Knight ADRC.** *The Clinical Dementia rating (CDR) Online certification Training* [Online]. Available at: <http://alzheimer.wustl.edu/cdr/CDR.htm>, last accessed 28 March 2017.
- Krogseth, M. *et al.*** (2016). Delirium is a risk factor for further cognitive decline in cognitively impaired hip fracture patients. *Archives of Gerontology and Geriatrics*, 64, 38–44. doi: [10.1016/j.archger.2015.12.004](https://doi.org/10.1016/j.archger.2015.12.004)
- Lancot, K. L. *et al.*** (2017). Neuropsychiatric signs and symptoms of Alzheimer's disease: new treatment paradigms. *Alzheimers Dement (N Y)*, 3, 440–449. doi: [10.1016/j.trci.2017.07.001](https://doi.org/10.1016/j.trci.2017.07.001)
- Lyketsos, C. G., Lopez, O., Jones, B., Fitzpatrick, A. L., Breitner, J. and Dekosky, S.** (2002). Prevalence of neuropsychiatric symptoms in dementia and mild cognitive impairment: results from the cardiovascular health study. *JAMA*, 288, 1475–1483. doi: [10.1001/jama.288.12.1475](https://doi.org/10.1001/jama.288.12.1475)
- Mainland, B. J., Amodeo, S. and Shulman, K. I.** (2014). Multiple clock drawing systems: simpler is better. *International Journal of Geriatric Psychiatry*, 29, 127–36. doi: [10.1002/gps.3992](https://doi.org/10.1002/gps.3992)
- Mckeith, I. G. *et al.*** (2017). Diagnosis and management of dementia with Lewy bodies: fourth consensus report of the DLB consortium. *Neurology*, 89, 88–100. doi: [10.1212/wnl.0000000000004058](https://doi.org/10.1212/wnl.0000000000004058)
- Mckhann, G. M. *et al.*** (2011). The diagnosis of dementia due to Alzheimer's disease: recommendations from the

- National Institute on Aging-Alzheimer's Association workgroups on diagnostic guidelines for Alzheimer's disease. *Alzheimer's & Dementia*, 7, 263–269. doi: [10.1016/j.jalz.2011.03.005](https://doi.org/10.1016/j.jalz.2011.03.005)
- Melis, R. J. F., Haaksma, M. L. and Muniz-Terrera, G.** (2019). Understanding and predicting the longitudinal course of dementia. *Current Opinion in Psychiatry*, 32, 123–129. doi: [10.1097/ycp.0000000000000482](https://doi.org/10.1097/ycp.0000000000000482)
- Mitrushina, M., Nboone, K., Razani, L. and D'elia, L.** (2005). *Handbook of Normative Data for Neuropsychological Assessment*, Oxford: Oxford University Press.
- Morris, J. C. et al.** (1989). The Consortium to Establish a Registry for Alzheimer's Disease (CERAD). Part I. Clinical and neuropsychological assessment of Alzheimer's disease. *Neurology*, 39, 1159–1165.
- Musicco, M. et al.** (2010). Neuropsychological predictors of rapidly progressing patients with Alzheimer's disease. *Dementia and Geriatric Cognitive Disorders*, 30, 219–228. doi: [10.1159/000319533](https://doi.org/10.1159/000319533)
- Nagin, D. S. and Odgers, C. L.** (2010). Group-based trajectory modeling in clinical research. *The Annual Review of Clinical Psychology*, 6, 109–138. doi: [10.1146/annurev.clinpsy.121208.131413](https://doi.org/10.1146/annurev.clinpsy.121208.131413)
- Norwegian Directorate of Health** (2017). *Nasjonal faglig retningslinje om demens*. Oslo, Norway.
- Norwegian Institute of Public Health.** (2018). *Cause of Death Registry* [Online]. Bergen, Norway: Norwegian Institute of Public Health. Available at: <https://www.fhi.no/hn/helseregistre-og-registre/dodsarsaksregisteret/>; last accessed 01 January 2018.
- O'bryant, S. E. et al.** (2008). Staging dementia using Clinical Dementia Rating Sum of Boxes scores: a Texas Alzheimer's research consortium study. *Archives of Neurology*, 65, 1091–1095. doi: [10.1001/archneur.65.8.1091](https://doi.org/10.1001/archneur.65.8.1091)
- Poulin, S. P., Bergeron, D. and Dickerson, B. C.** (2017). Risk factors, neuroanatomical correlates, and outcome of neuropsychiatric symptoms in Alzheimer's Disease. *Journal of Alzheimer's Disease*, 60, 483–493. doi: [10.3233/jad-160767](https://doi.org/10.3233/jad-160767)
- Rascovsky, K. et al.** (2011). Sensitivity of revised diagnostic criteria for the behavioural variant of frontotemporal dementia. *Brain*, 134, 2456–2477. doi: [10.1093/brain/awr179](https://doi.org/10.1093/brain/awr179)
- Reed, C. et al.** (2020). Factors associated with long-term impact on informal caregivers during Alzheimer's disease dementia progression: 36-month results from GERAS. *International Psychogeriatrics*, 32(2), 267–277. doi: [10.1017/S1041610219000425](https://doi.org/10.1017/S1041610219000425)
- Reitan, R. M.** (1958). Validity of the trail making test as an indicator of organic brain damage. *Perceptual and Motor Skills*, 8, 271–276.
- Scheltens, N. M. E. et al.** (2018). Prominent non-memory deficits in Alzheimer's disease are associated with faster disease progression. *Journal of Alzheimer's Disease*, 65, 1029–1039. doi: [10.3233/JAD-171088](https://doi.org/10.3233/JAD-171088)
- Schneider, L. S., Dagerman, K. S. and Insel, P.** (2005). Risk of death with atypical antipsychotic drug treatment for dementia: meta-analysis of randomized placebo-controlled trials. *JAMA*, 294, 1934–1943. doi: [10.1001/jama.294.15.1934](https://doi.org/10.1001/jama.294.15.1934)
- Shah, H. et al.** (2016). Research priorities to reduce the global burden of dementia by 2025. *The Lancet Neurology*, 15, 1285–1294. doi: [10.1016/s1474-4422\(16\)30235-6](https://doi.org/10.1016/s1474-4422(16)30235-6)
- Shulman, K., Shedletsky, R. and Silver, I.** (1986). The challenge of time: clock-drawing and cognitive function in the elderly. *International Journal of Geriatric Psychiatry*, 1, 135–140. doi: [10.1002/gps.930010209](https://doi.org/10.1002/gps.930010209)
- Siafarikas, N., Selbaek, G., Fladby, T., Saltyte Benth, J., Auning, E. and Aarsland, D.** (2018). Frequency and subgroups of neuropsychiatric symptoms in mild cognitive impairment and different stages of dementia in Alzheimer's disease. *International Psychogeriatrics*, 30, 103–113. doi: [10.1017/s1041610217001879](https://doi.org/10.1017/s1041610217001879)
- Song, Y. N. et al.** (2018). Risk factors of rapid cognitive decline in Alzheimer's disease and mild cognitive impairment: a systematic review and meta-analysis. *Journal of Alzheimer's Disease*, 66, 497–515. doi: [10.3233/jad-180476](https://doi.org/10.3233/jad-180476)
- Strand, B. H. et al.** (2018). Survival and years of life lost in various aetiologies of dementia, mild cognitive impairment (MCI) and subjective cognitive decline (SCD) in Norway. *PLoS One*, 13, e0204436. doi: [10.1371/journal.pone.0204436](https://doi.org/10.1371/journal.pone.0204436)
- Strand, B. H. et al.** (2019). The Loss in Expectation of Life due to Early-Onset Mild Cognitive Impairment and Early-Onset Dementia in Norway. *Dementia and Geriatric Cognitive Disorders*, 47, 355–365. doi: [10.1159/000501269](https://doi.org/10.1159/000501269)
- Tschanz, J. T. et al.** (2011). Progression of cognitive, functional, and neuropsychiatric symptom domains in a population cohort with Alzheimer dementia: the Cache County Dementia Progression study. *The American Journal of Geriatric Psychiatry*, 19, 532–542. doi: [10.1097/JGP.0b013e3181faec23](https://doi.org/10.1097/JGP.0b013e3181faec23)
- Vasilevskis, E. E., Han, J. H., Hughes, C. G. and Ely, E. W.** (2012). Epidemiology and risk factors for delirium across hospital settings. *Best Practice and Research: Clinical Anaesthesiology*, 26, 277–287. doi: [10.1016/j.bpa.2012.07.003](https://doi.org/10.1016/j.bpa.2012.07.003)
- Wang, Y. et al.** (2019). Cognitive and functional progression of dementia in two longitudinal studies. *International Journal of Geriatric Psychiatry*, 34, 1623–1632. doi: [10.1002/gps.5175](https://doi.org/10.1002/gps.5175)
- Xu, J., Murphy, S. L., Kochanek, K. D., Bastian, B. and Arias, E.** (2018). Deaths: Final Data for 2016. National vital statistics reports: from the Centers for Disease Control and Prevention, National Center for Health Statistics. *National Vital Statistics System*, 67, 1–76.