

La Silla-QUEST Variability Survey in the Southern Hemisphere

Ellie Hadjiyska¹, David Rabinowitz¹, Charles Baltay¹,
Nancy Ellman¹, Peter Nugent², Robert Zinn³, Benjamin Horowitz¹,
Ryan McKinnon¹, Lissa R. Miller³

¹Center for Astronomy & Astrophysics, Yale University, New Haven, CT 06520-8120 USA
email: ellie.hadjiyska@yale.edu

²Lawrence Berkeley National Laboratory, Berkeley, CA, 94720-8139 USA

³Dept. of Astronomy, Yale University,
P.O. Box 208101, New Haven, CT 06520-8101 USA

Abstract. We describe the La Silla-QUEST (LSQ) Variability Survey. LSQ is a dedicated wide-field synoptic survey in the Southern Hemisphere, focussing on the discovery and study of transients ranging from low redshift ($z < 0.1$) SN Ia, Tidal Disruption events, RR Lyrae variables, CVs, Quasars, TNOs and others. The survey utilizes the 1.0-m Schmidt Telescope of the European Southern Observatory at La Silla, Chile, with the large-area QUEST camera, a mosaic of 112 CCDs with field of view of 9.6 square degrees. The LSQ Survey was commissioned in 2009, and is now regularly covering ~ 1000 square deg per night with a repeat cadence of hours to days. The data are currently processed on a daily basis. We present here a first look at the photometric capabilities of LSQ and we discuss some of the most interesting recent transient detections.

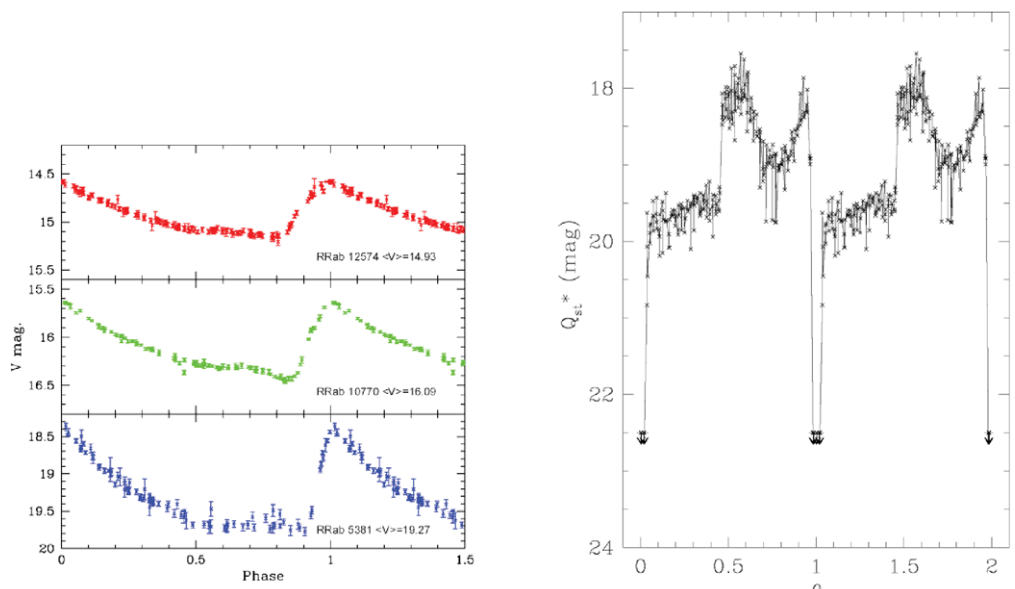
Keywords. surveys, techniques: photometric, supernovae: Type Ia, stars: variables

1. Introduction

After the completion of the Palomar-QUEST northern sky survey in September 2008 the QUEST Large Field Camera (Baltay *et al.* 2007) was moved and installed on the 1.0-m ESO Schmidt in La Silla and had first light on April 24, 2009. Since September 2009 the southern survey has been routinely observed (Andrews *et al.* 2008), and the telescope and camera are controlled from Yale and are fully robotic. We have 90% of the time on the telescope with 10% allocated to Chile. The QUEST camera consists of 112 CCDs of 600×2400 Sarnoff thinned pixels, back illuminated devices with $13 \mu\text{m} \times 13 \mu\text{m}$ pixel pitch. The camera covers an area of $4^\circ.6 \times 3^\circ.6$ on the sky and a plate scale of 0.86 arcsec/pixel. The survey covers ~ 1000 square degrees per night, primarily between $\pm 25^\circ$ to allow for follow-up from both hemispheres. The LSQ variability (SN and transient) survey uses 60-sec exposures (and the TNO survey 180 sec) taken twice a night with a cadence of 2 nights in one broad-band filter of 4000 to 7000 Å (Qst*-band). The seeing at La Silla for the 60-sec exposures is 1.7 arcsec FWHM, reaching a depth of 20.5 mag. The LSQ survey subtraction pipeline has started producing between 400 and 900 transient candidates each night (Fig. 1).



Figure 1. A possible supernova. From left – reference image, night1, subtracted image.



(a) RR Lyrae V magnitude light curves for RRab 12574, 10770 and 5381.

(b) Relative Qst*-band brightness versus orbital phase θ , from LSQ observations.

Figure 2. LSQ Example Transient Detections.

2. Transient Detections

2.1. RR Lyrae Variables

The LSQ RR Lyrae star (RRLS) survey is searching the galactic halo for RRLS that have V magnitudes between roughly 14 and 20. Because RRLS are excellent standard candles, they provide a powerful probe of the density distribution of the halo, which is being examined for halo substructure. Plotted are the V magnitude light-curves for three type ab RRLS (Fig. 2a), which illustrate the typical photometric precisions at these magnitudes. From their mean V magnitudes, we estimate that RRab 12574, 10770, and 5381 lie 7, 13, and 52 kpc from the Sun, respectively.

2.2. A Deep Eclipsing CV

A deep eclipsing cataclysmic variable (Rabinowitz *et al.* 2011a) was discovered with eclipse depths >5.7 magnitudes, orbital period 94.657 min, and peak brightness $V \sim 18$ at J2000 position 17h 25m 54.8s, -64 deg 38 min 39 sec. Light curves in B , V , R , I , z and J were obtained with SMARTS 1.3-m and 1.0-m telescopes at Cerro Tololo and spectra from 3500 to 9000 Å with the SOAR 4.3-m telescope at Cerro Pachon. The optical light curves (Fig. 2b) show a deep, 5-min eclipse immediately followed by a shallow 38-min eclipse and then sinusoidal variation. No eclipses appear in J . During the deep eclipse

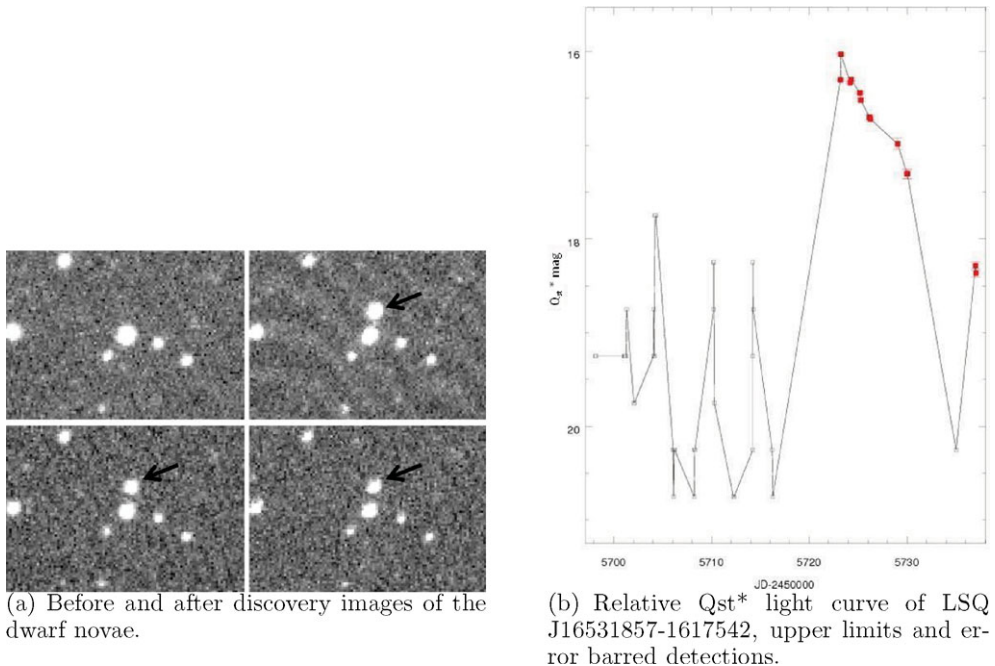


Figure 3. The first followed up LSQ subtraction pipeline transient candidate.

the measure of $V-J > 7.1$ corresponds to a spectral type M8 or later secondary. The spectra show strong Hydrogen emission lines, Doppler broadened by $600 - 1300 \text{ km s}^{-1}$, oscillating with radial velocity that peaks at mid deep eclipse with semi-amplitude $500 \pm 22 \text{ km s}^{-1}$. It is suggested that LSQ172554.8-643839 is a polar with a low-mass secondary viewed at high inclination.

2.3. A Dwarf Nova

An apparent dwarf nova was discovered (Rabinowitz *et al.* 2011b) on June 11.046 (when the variable was at magnitude $R = 16.3$) and June 11.063 UT (at $R = 16.0$) (Figs. 3a and 3b). A faint source is reported at this position in the Guide Star Catalog V2.3.2 (with $B_j = 20.76$). Simultaneous visible and J -band observations were taken with ANDICAM on the 1.3-m SMARTS telescope at Cerro Tololo. A spectrum (range $0.350\text{--}0.966 \text{ nm}$) taken on June 26 with GMOS on the Gemini South telescope reveals strong $H\text{-}\alpha$ and $H\text{-}\beta$ emission lines, with $H\text{-}\alpha$ clearly double-peaked, indicating the presence of an accretion disk with a rotational velocity of 1000 km s^{-1} .

This work has been made possible with the help of NERSC computer resources and funding from DOE and NASA.

References

- Andrews, P., *et al.* 2008, *PASP*, 120, 703A
 Baltay, C., *et al.* 2007, *PASP*, 119, 1278B
 Rabinowitz, D., *et al.* 2011, *ApJ*, 732, 51
 Rabinowitz, D., Baltay, C., Ellman, N., Hadjiyska, E., & Tourtellote, S. 2011, *CBET*, 2757, 1R