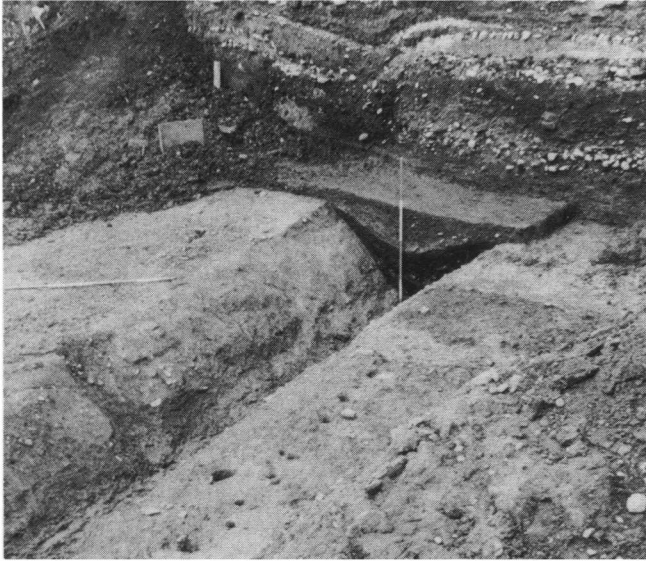
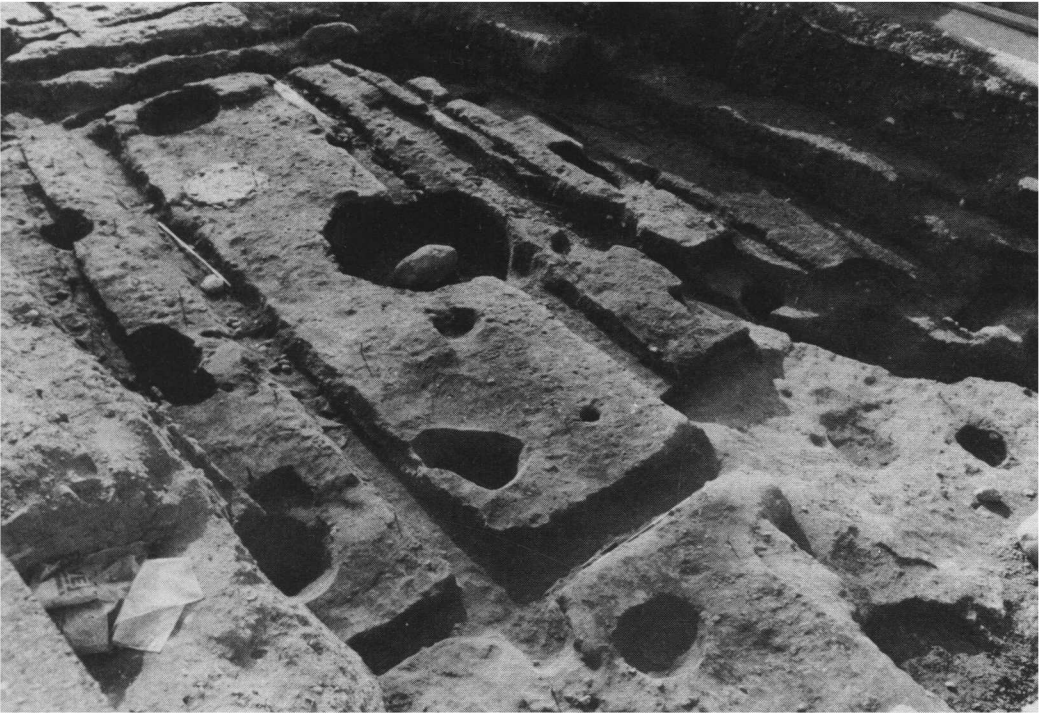


PLATE I



(Photo: Carlisle Archaeological Unit)

A. Keay's Lane, Carlisle: the ditch of the large 'official' building (p. 81).



(Photo: Carlisle Archaeological Unit)

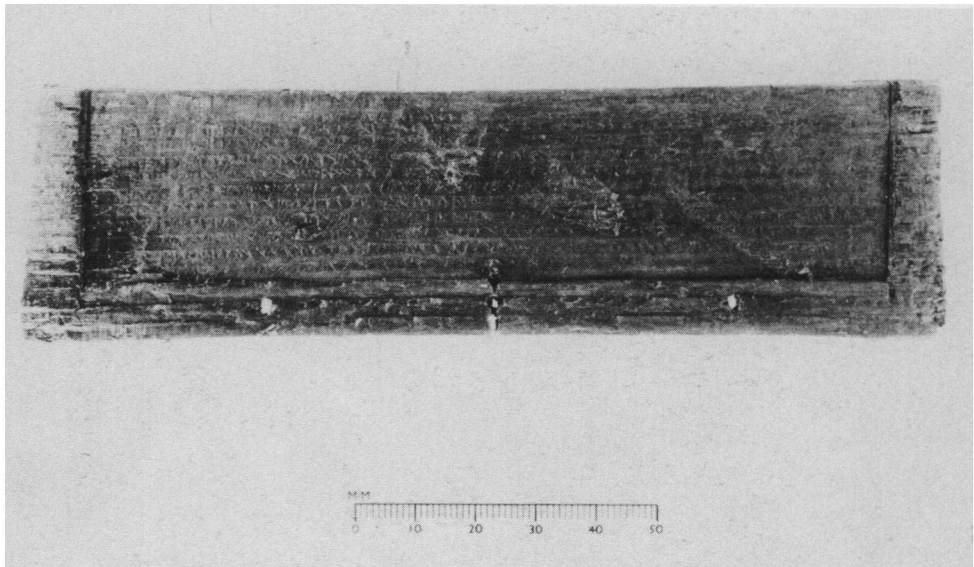
B. Keay's Lane, Carlisle: foundation trenches of the large timber building (p. 81).

PLATE II



(Photo: Carlisle Archaeological Unit)

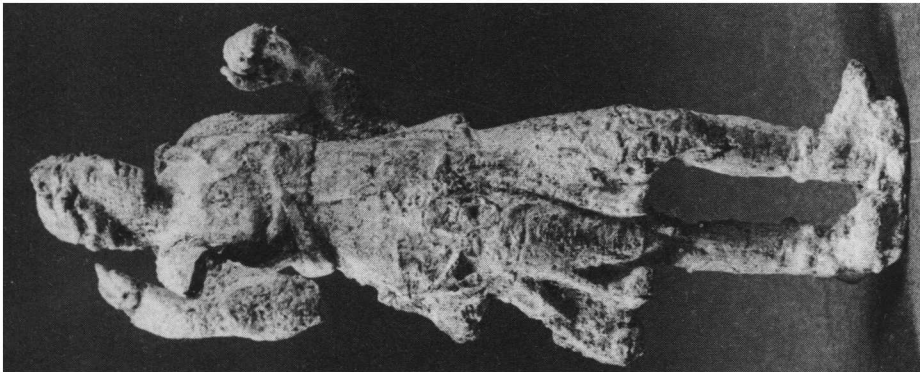
A. Old Grapes Lane, Carlisle: collapsed superstructure of second-century timber buildings (p. 82).



(Photo: University of Durham)

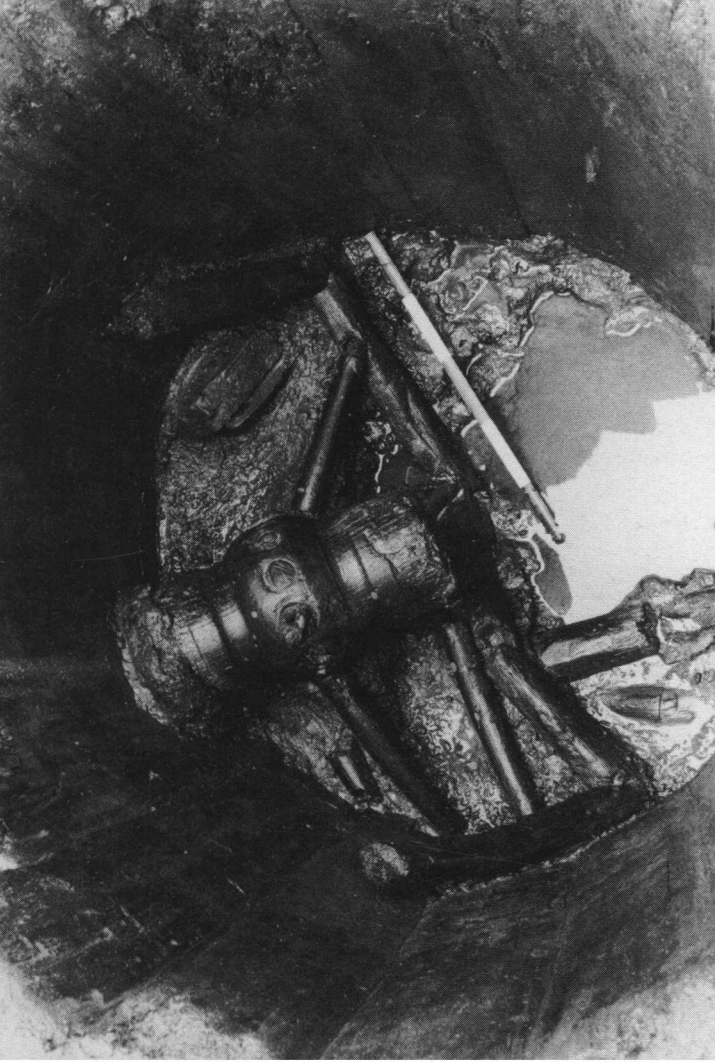
B. Writing tablet no. 2, from The Lanes, Carlisle (p. 83).

PLATE III



(Photo: Carlisle Archaeological Unit)

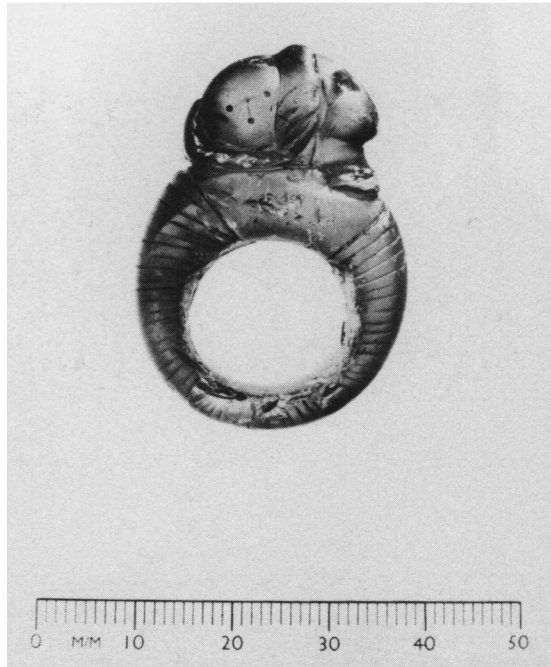
A. Lead figure of Diana, from The Lanes, Carlisle (p. 84).



(Photo: Carlisle Archaeological Unit)

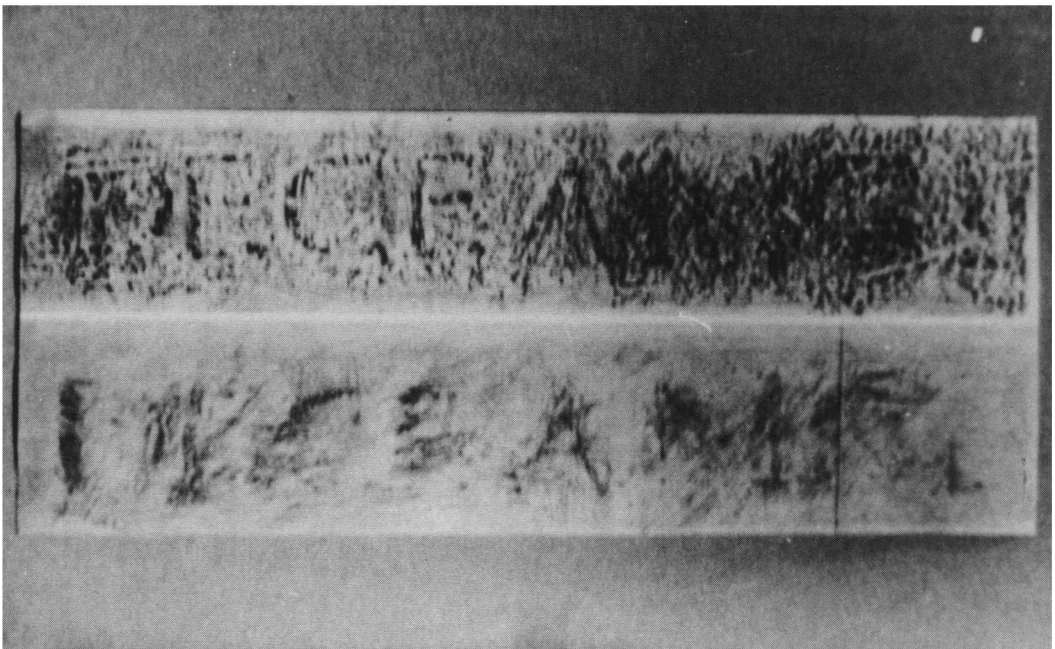
B. Wooden single-piece felloe wheel *in situ* in a barrel-lined pit, The Lanes, Carlisle. The nave, spokes and remains of the felloe are clearly visible (p. 85). Scale 0.5 m.

PLATE IV



(Photo: University of Durham)

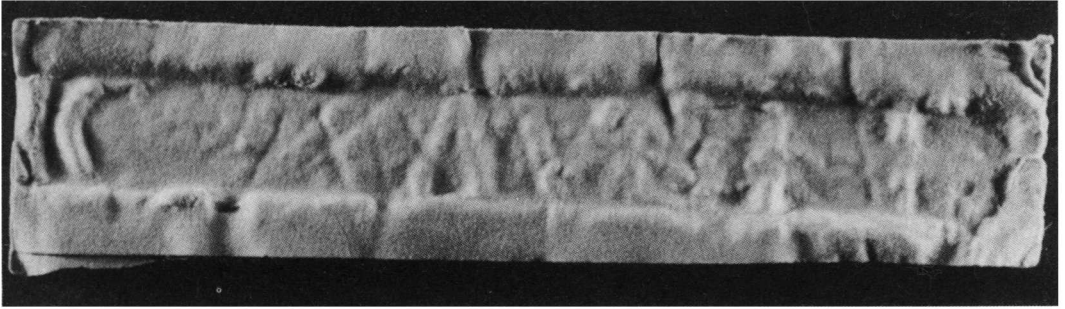
A. Amber ring, carved with the head of Minerva, from The Lanes, Carlisle (p. 88).



(Copyright: British Museum)

B. Ingots from Hints Common, front face inscriptions: upper, British Museum; lower, Tamworth Castle; from squeezes (p. 113).

PLATE V



(Copyright British Museum, courtesy of the University Library, Newcastle upon Tyne)

A. *CIL* vii 1202, right half of main inscription (from a squeeze) (p. 116).



(Copyright British Museum, courtesy of the University Library, Newcastle upon Tyne)

B. *CIL* vii 1202, incised stamps on front face (from a squeeze) (p. 117).

PLATE VI



(Photo: M. B. Cookson)

A. Bignor: Trench 61 III, looking west across Room 34; N. wall of Room 35 in foreground; burnt wall-trench of Period I by rod; blocked door in W. wall of Room 34 (p. 148).



(Photo: M. B. Cookson)

B. Bignor: masonry base against robbed N. wall of Room 28B (p. 149).

PLATE VII



(Photo: M. B. Cookson)

A. Bignor: Room 40 looking east, showing earlier corn-drier of Period II B (p. 153).



(Photo: M. B. Cookson)

B. Bignor: south end of Room 34 looking S., showing original south wall of the Period II C portico in centre, with oblique extension to N. wall of Room 40 (back right), and N. wall of S. corridor (Room 45) at rear left (p. 154).

PLATE VIII



(Photo: M. B. Cookson)

A. Bignor: junction of Rooms 41 and 45, with S. end of Room 34 to rear (p. 155).



(Photo: M. B. Cookson)

B. Bignor: buttness in S.W. corner of Room 41 looking S.W., with flue in lip of Wall 40/41 (p. 155).

PLATE IX



(Photo: M. B. Cookson)

A. Bignor: Trench 61 I across Rooms 10 and 9A, looking N.E., showing early timber foundation-trench below Room 9A (p. 165).



(Photo: M. B. Cookson)

B. Bignor: stone platform in Room 48 looking E. (p. 174).

PLATE X



(Photo: M. B. Cookson)

A. Bignor: N. wall of Room 7A looking S., showing lead pipe as found (pp. 167, 168).



(Photo: M. B. Cookson)

B. Bignor: lead pipe inlet for piscina in Room 7 after clearance (p. 168).

PLATE XI



(Photo: M. B. Cookson)

Bignor: restored sheet of three-dimensional wall-plaster from Room 28B (p. 159, note 6). Scale c. 1:9.

PLATE XII



(Photo: Edward Johnson)

A. Bignor: view looking S.W. across Rooms 38 and 39, the unfinished bath-suite (p. 160).



(Photo: S. S. Frere)

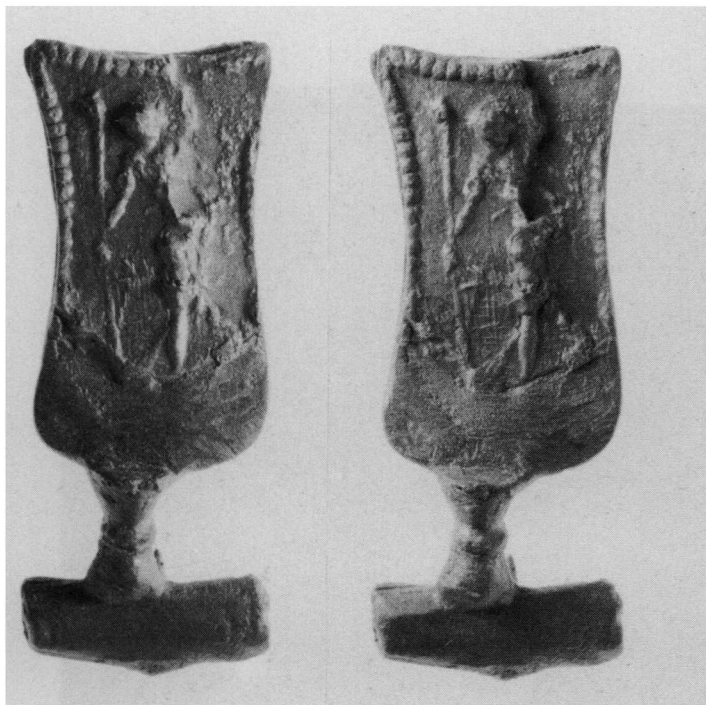
B. Bignor: Channel-hearth E 1 in Room 40 (p. 157).



(Photo: Edward Johnson)

C. Bignor: the fallen tile roof in Room 45 (Trench 58 II) looking N.E. (p. 170).

PLATE XIII



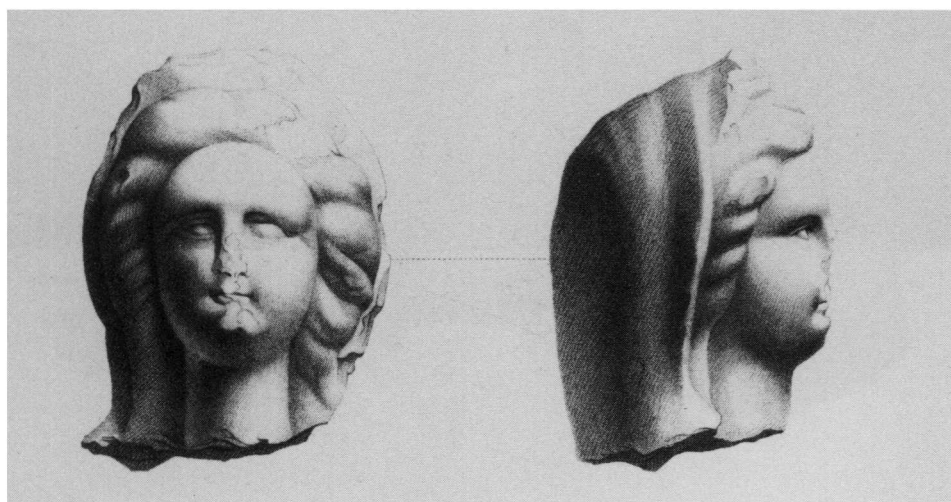
(Photo: R. L. Wilkins)

A. Bignor: bronze brooch no. 5 (p. 177). Scale 2:1.



(Photo: M. B. Cookson)

B. Bignor: the gold ring (p. 192). Scale 2:1.



C. Bignor: head of Fortuna, from Lyson's illustration (p. 193). Scale 1:2.

PLATE XIV



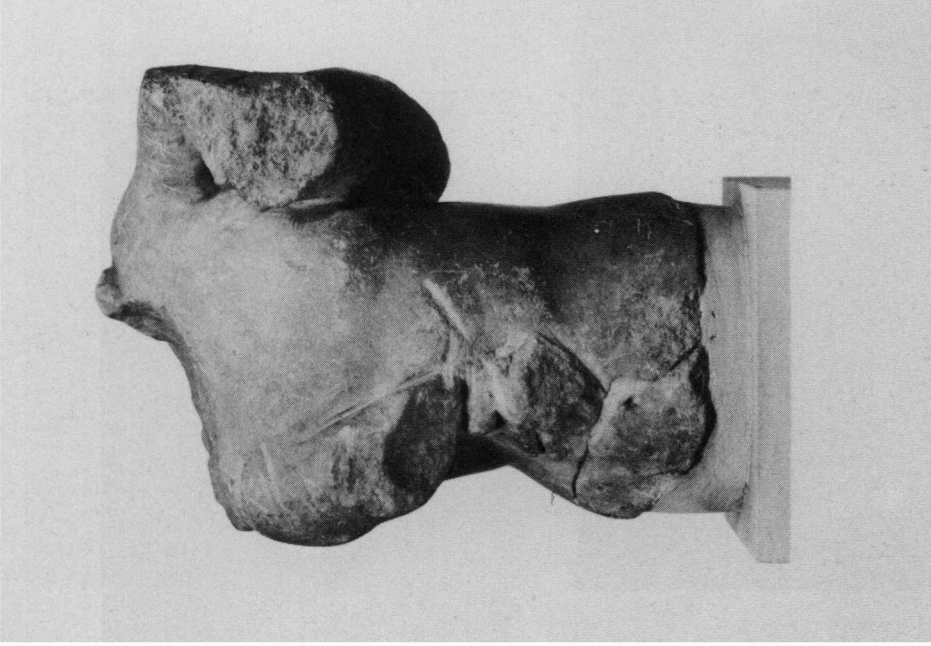
(Photo: National Monuments Record)

Woodchester: the Great Pavement in 1973, looking N. (p. 197).

PLATE XV

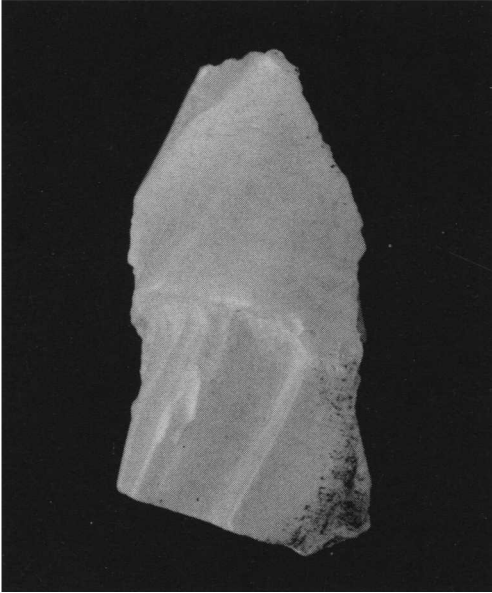


A. Woodchester: sculptural fragments. A. Diana Luna, height 0·44 m (p. 207). B. Cupid and Psyche, height 0·18 m (p. 207).



B. (Photos: Trustees of the British Museum)

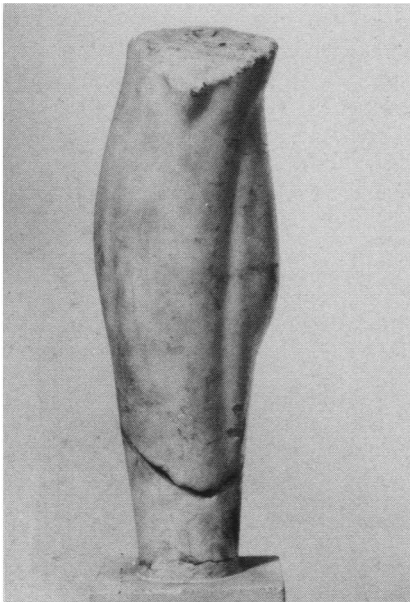
PLATE XVI



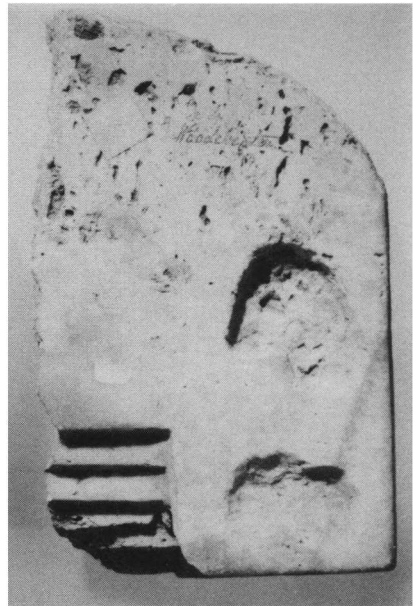
A.



B.



C.

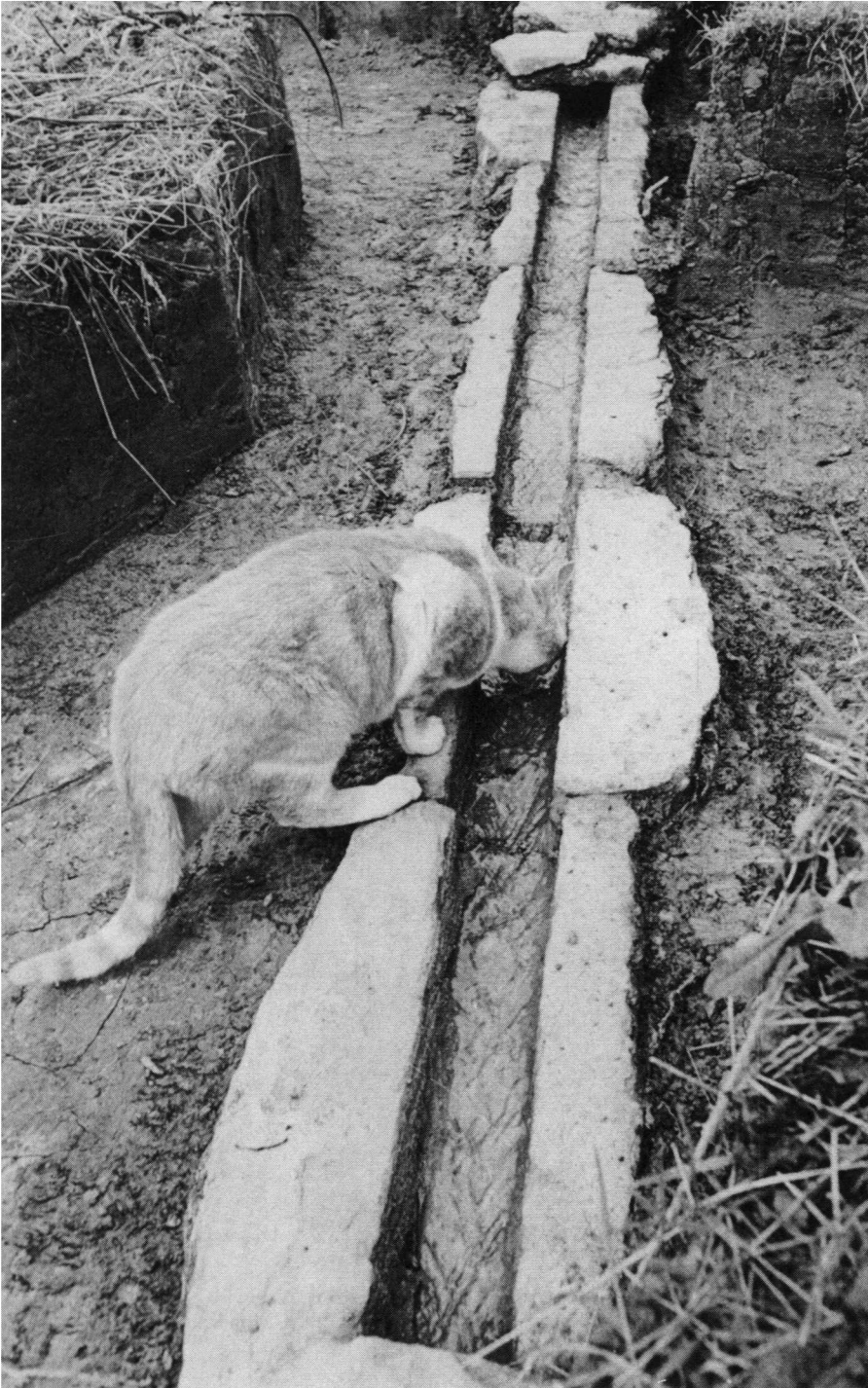


D.

(Photos: Trustees of the British Museum)

Woodchester: sculptural fragments. A. Drapery fragment, 0.05×0.04 m (p. 208). B. Rams head protome, 0.07×0.08 m (p. 208). C. Leg Fragment, length 0.16 m (p. 207). D. Base, 0.25×0.15 m (p. 208).

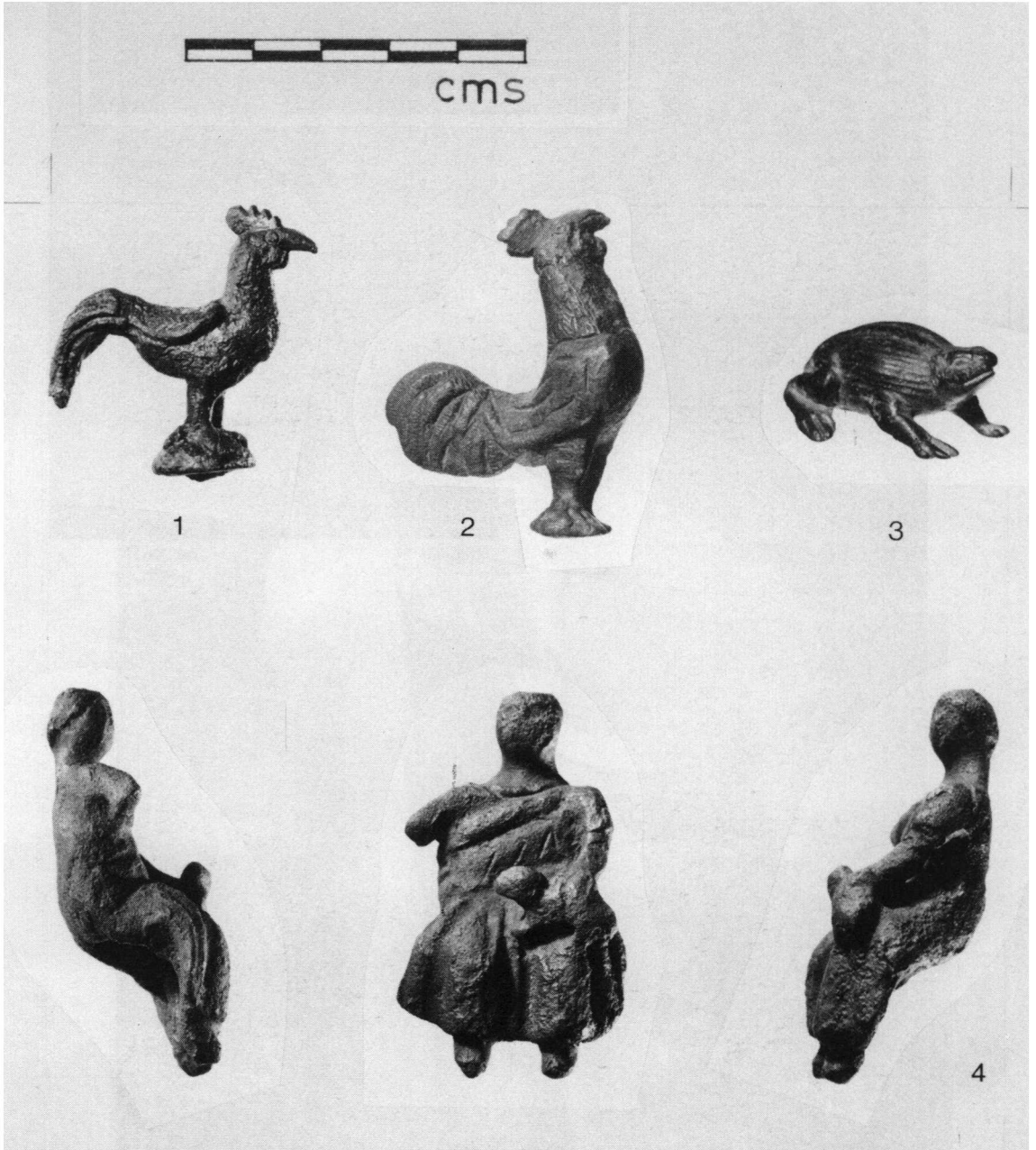
PLATE XVII



(Photo: Gloucestershire Gazette Newspapers)

Woodchester: the stone conduit in use in 1973, looking W. towards the section reproduced as FIG. 7 (p. 217).

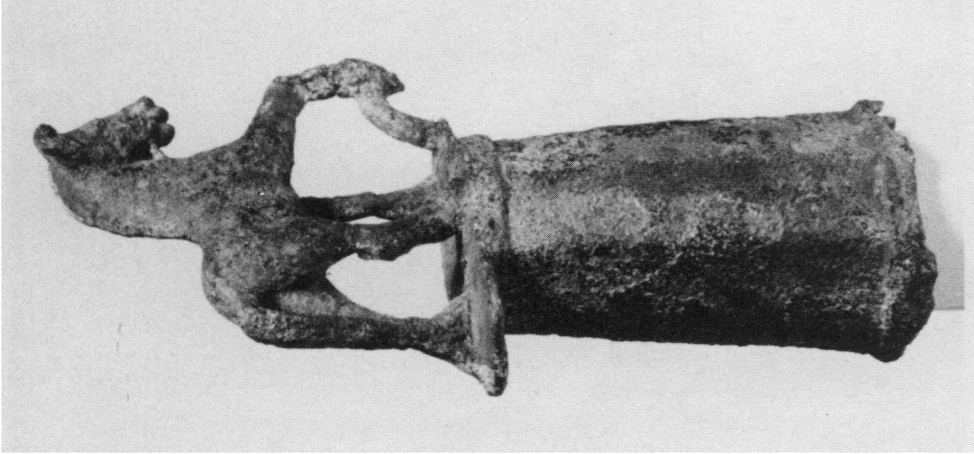
PLATE XVIII



(Photos: Gordon Ager)

Bronze figurines: cockerels from Chelmsford (1) and Great Canfield (2), Essex; frog or toad from Wixoe, Suffolk (3); mother goddess from Thundersley, Essex (4) (p. 239). Scale 1 : 1.

PLATE XIX

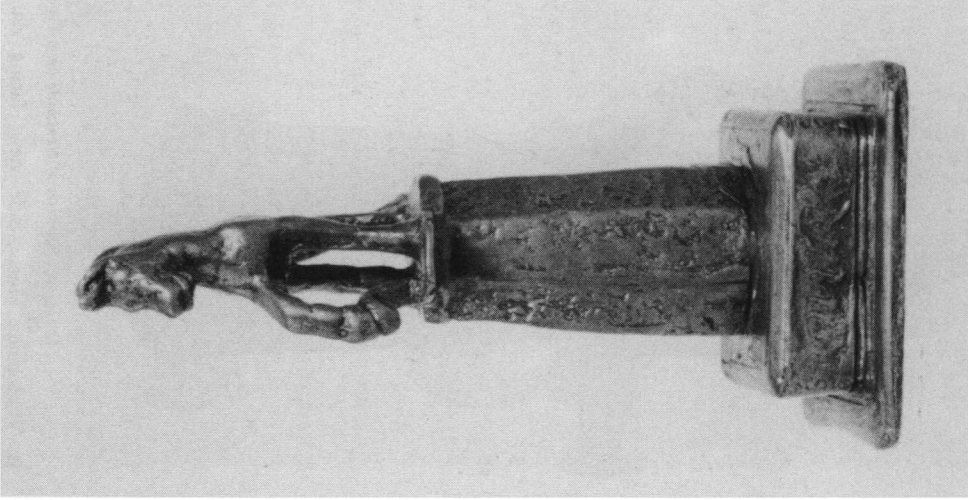


(Courtesy University of Newcastle upon Tyne)
B. Vindolanda Horse, side view, facing right
(p. 245).

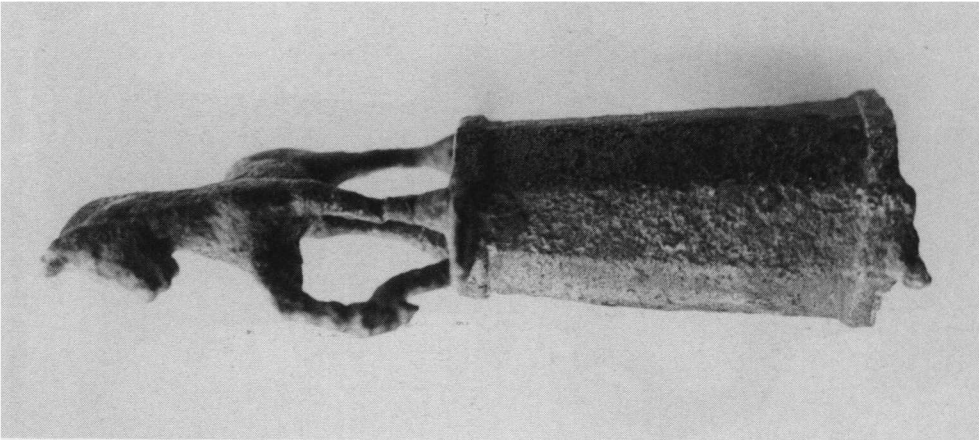


(Courtesy University of Newcastle upon Tyne)
A. Vindolanda Horse, side view, facing left (p. 245).

PLATE XX

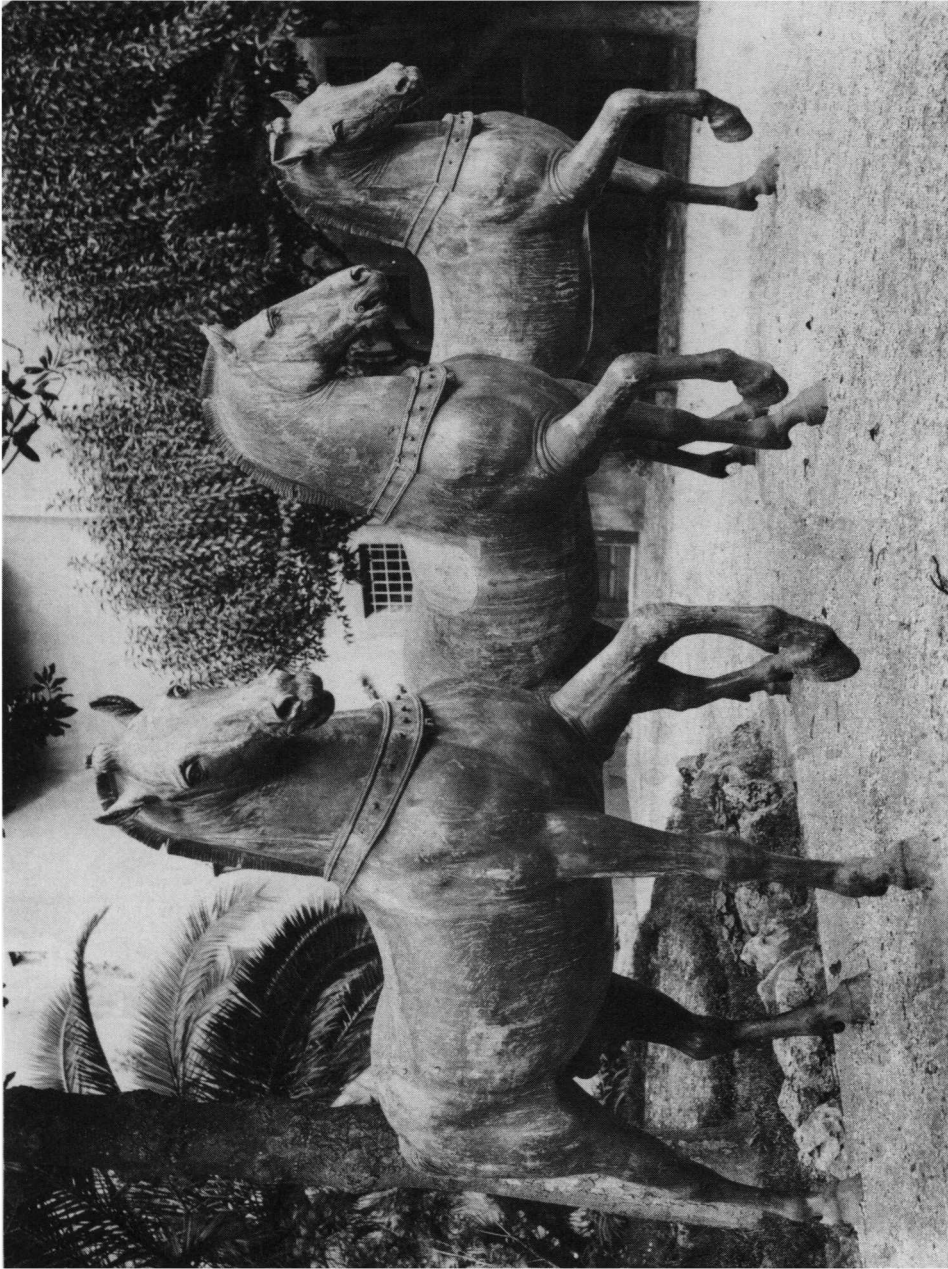


(Photo: Ashmolean Museum)
B. Vindolanda Horse, from front; the two features below the polygonal mount are modern (p. 248).



(Photo: Alan Wilkins)
A. Vindolanda Horse, facing $\frac{3}{4}$ to left (p. 245).

PLATE XXI



(Photo: Anderson)

Three of the Horses of San Marco (p. 248).

PLATE XXII



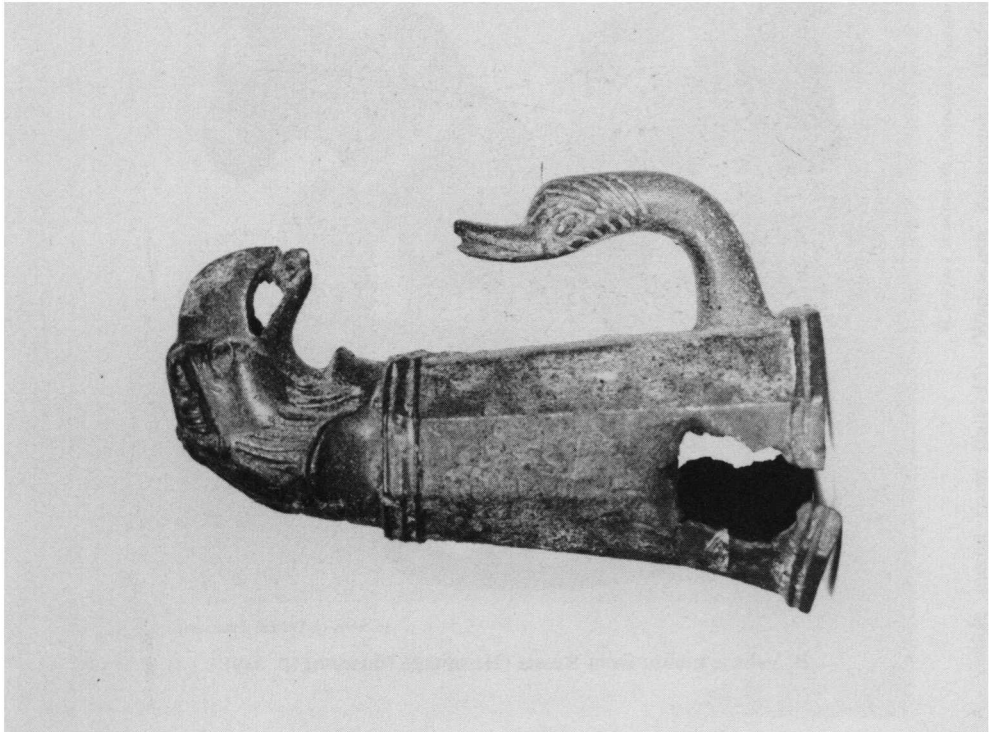
(Courtesy Norwich Museum)

Vehicle mounts from (l. to r.) Eisenberg (Speyer Museum); Trier area (Rijksmuseum, Leiden); Ljittle Cressingham, Norfolk (Norwich Museum) (p. 249).

PLATE XXIII

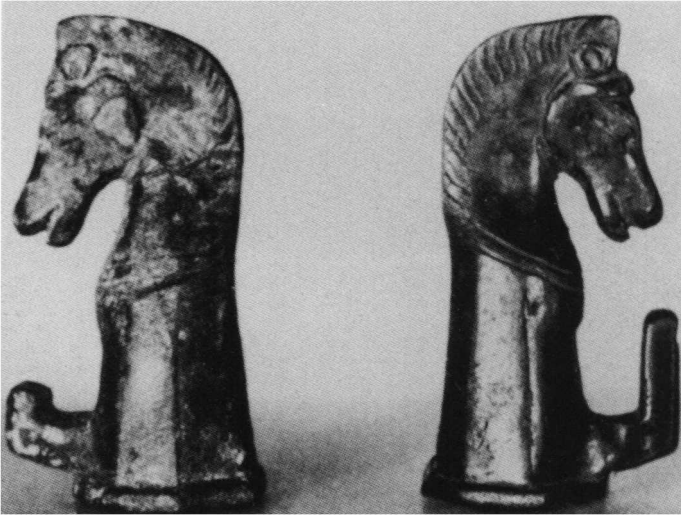


(Courtesy British Museum)
B. Vehicle mount, provenance unrecorded (British Museum) (p. 249).



(Courtesy Reading Museum)
A. Vehicle mount from Silchester (Reading Museum) (p. 249).

PLATE XXIV



(Courtesy British Museum)

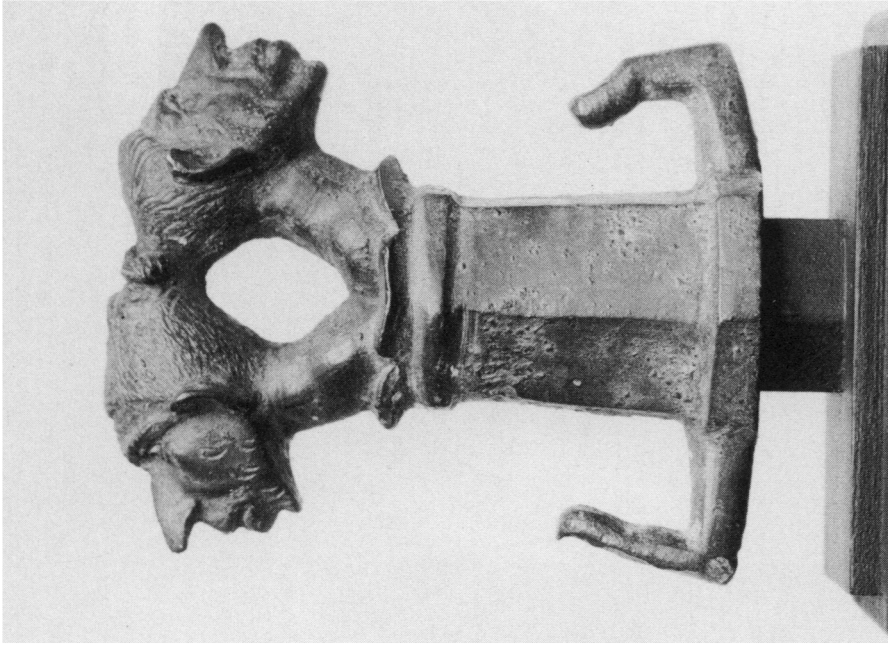
A. Vehicle mount from Bulgaria (Sofia Museum) (p. 249).



(Courtesy British Museum)

B. Vehicle mount from Russia (Hermitage Museum) (p. 249).

PLATE XXV



(Courtesy *British Museum*)

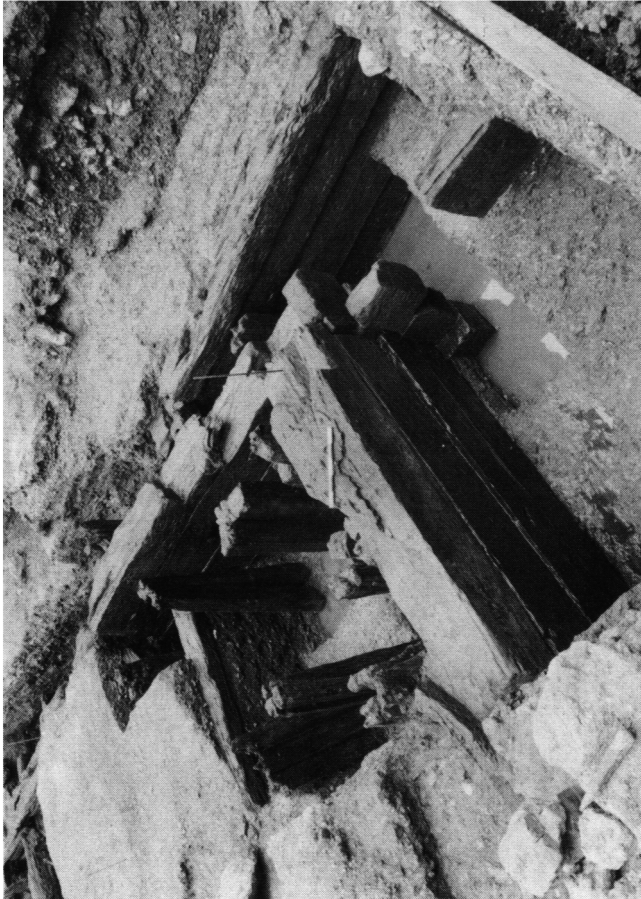
B. Vehicle mount, provenance unrecorded (*British Museum*) (p. 251).



(Courtesy *Wadsworth Athenaeum, Hartford*)

A. Vehicle mount from Italy (?) (*Wadsworth Athenaeum, Hartford, Connecticut, U.S.A.*) (p. 245).

PLATE XXVI

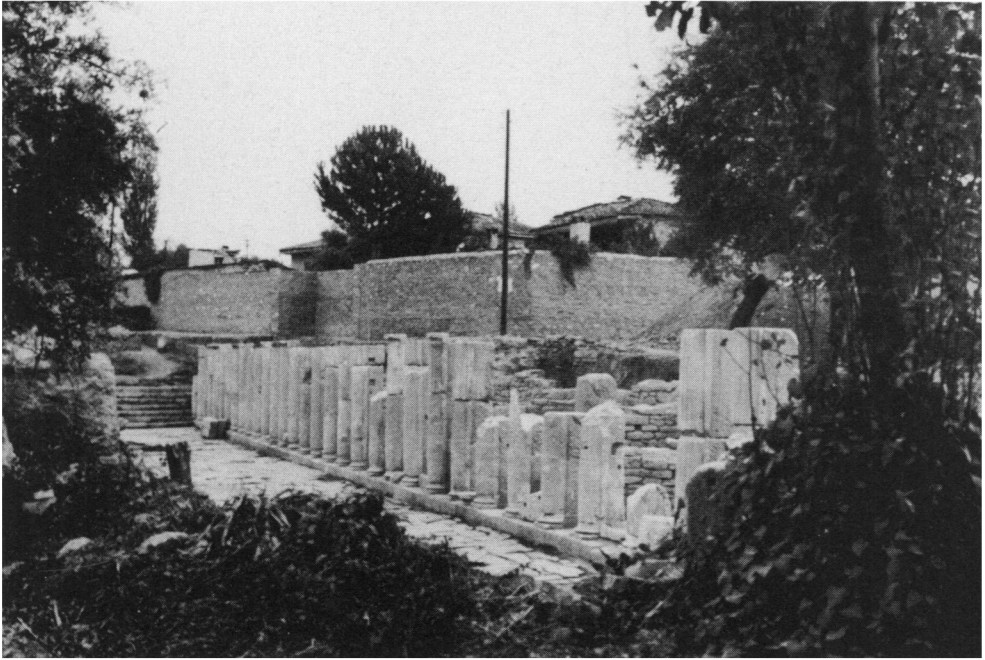


(Photo: Jon Bailey)
A. Pudding Lane excavations, London, showing S.W. corner of first-century timber quay (with 5×100 mm scale) looking S.E., river to S. and W. The N. face and N.E. corner of ? bridge pier sits in open river, cut by modern concrete (p. 273).



(Photo: T. J. Hurst)
B. Pudding Lane excavations, London: detail of N.E. corner of ? bridge pier (with 5×100 mm scale) looking W., cut by insertion of late first-century quay (with 2×100 mm scale) (p. 273).

PLATE XXVII



(Photo: M. Ali Döğenci)

A. Aphrodisias: general view of the *Sebasteion* and its south portico, looking eastwards (p. 277).



(Photo: M. Ali Döğenci)

B. Aphrodisias: inscribed base of relief showing Claudius and Britannia (p. 279).

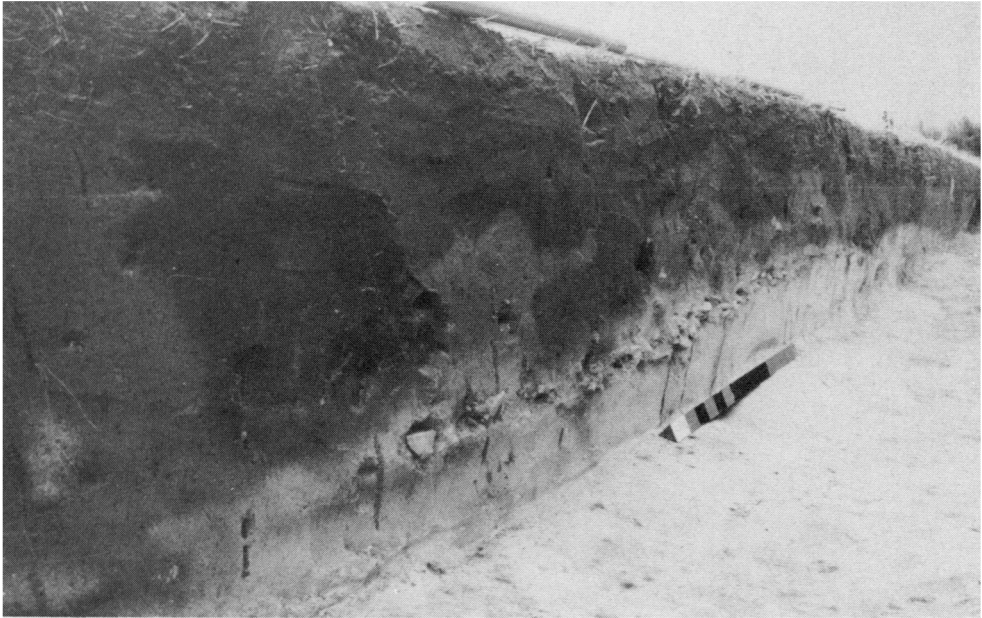
PLATE XXVIII



Aphrodisias: head of Claudius (detail) (p. 281).

(Photo: M. Ali Döğenci)

PLATE XXIX



(Photo: G. D. B. Jones)

A. Cardurnock – Herd Hill: a section through the paved patrol road between Towers 4A and 4B, showing the small side gully to the west (p. 287).



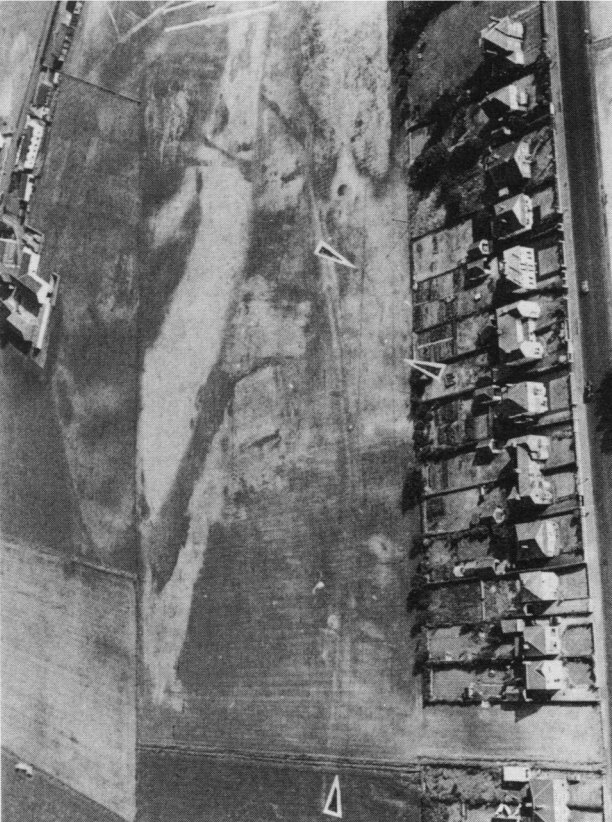
(Photo: G. D. B. Jones)

B. Cardurnock 4B: view of the clay platform from the north, showing part of its cobble base exposed by the secondary palisade trench running up the centre of the photograph (p. 288).

PLATE XXX

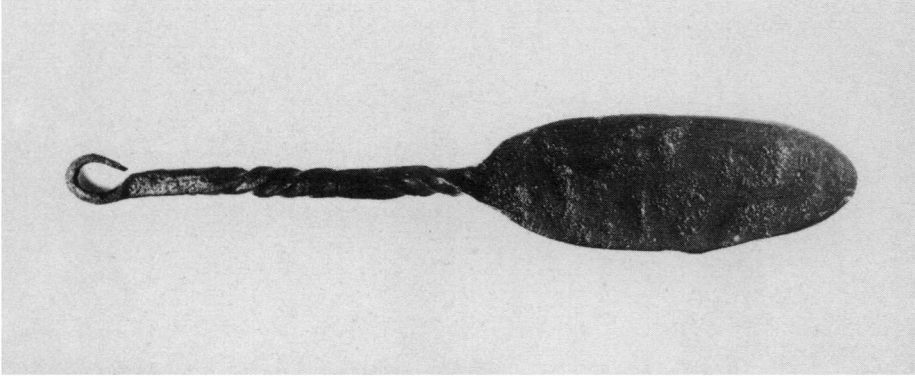


(Photo: G. D. B. Jones)
B. Sillloth: the clay-packed palisade trench with a series of seven stakeholes excavated in 1976 (see FIG. 4). A further sketch was examined in 1977 (p. 292).

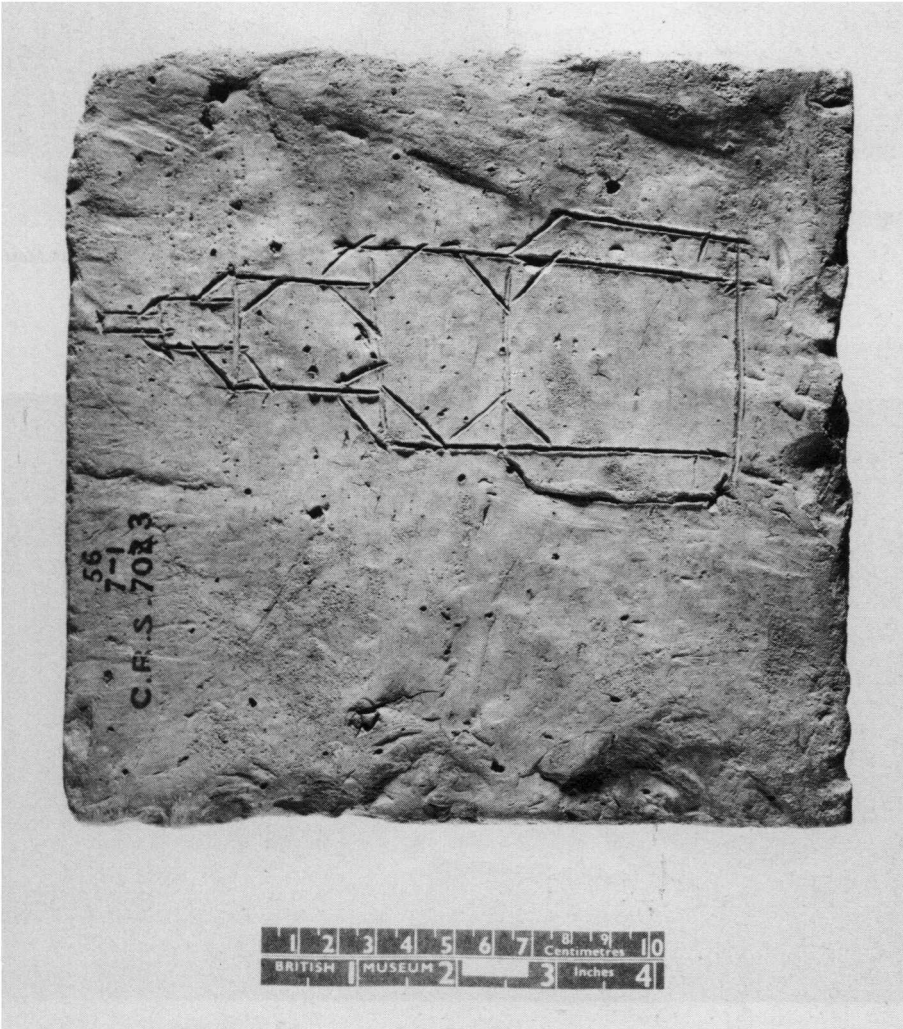


(Photo: G. D. B. Jones)
A. Sillloth playing fields: air photograph from the west. The road at the bottom marks the edge of the present shoreline. On the playing fields, apart from the cricket square, can be seen two narrow lines on slightly different alignments, which proved to be clay-filled trenches supporting a timber palisade. Behind them can be seen the double-ditch line of the coastal road leading to the entrance of a small camp. Two sides of this can be seen in the photograph, and the N.W. corner is obscured by the ditch of a field system associated with the Sillloth farm some 300 yards away (p. 292).

PLATE XXXI

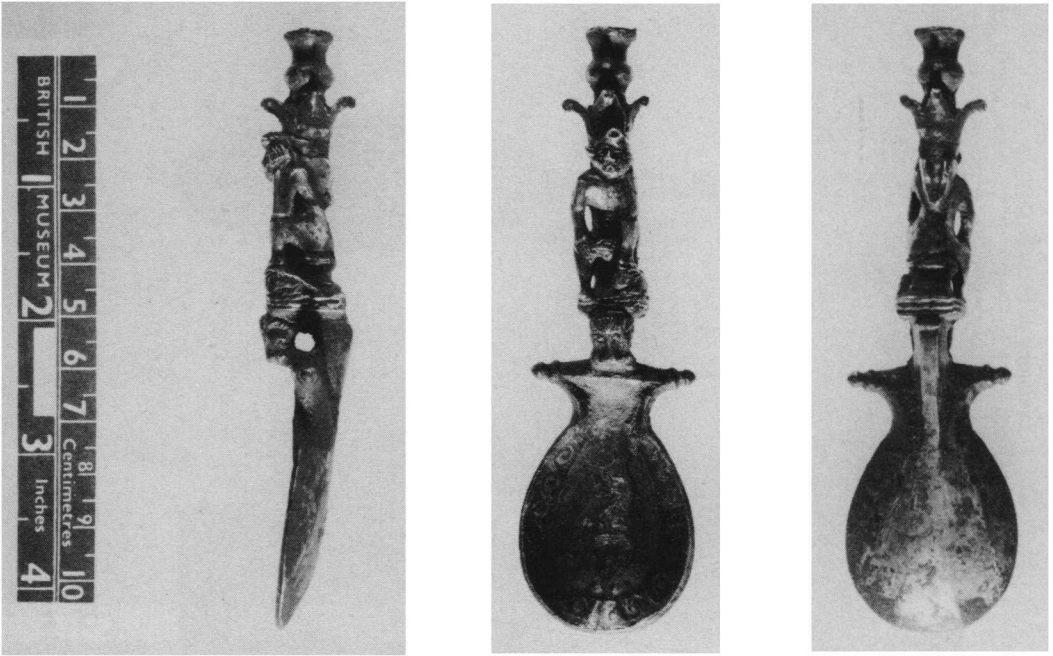


(Photo: copyright *St. Albans Museum*)
B. Iron cauterium from *St. Albans Museum*
(p. 303).



(Photo: copyright *British Museum*)
A. Graffito drawing of a *Pharos* on a tile from the *British Museum* (p. 299).

PLATE XXXII



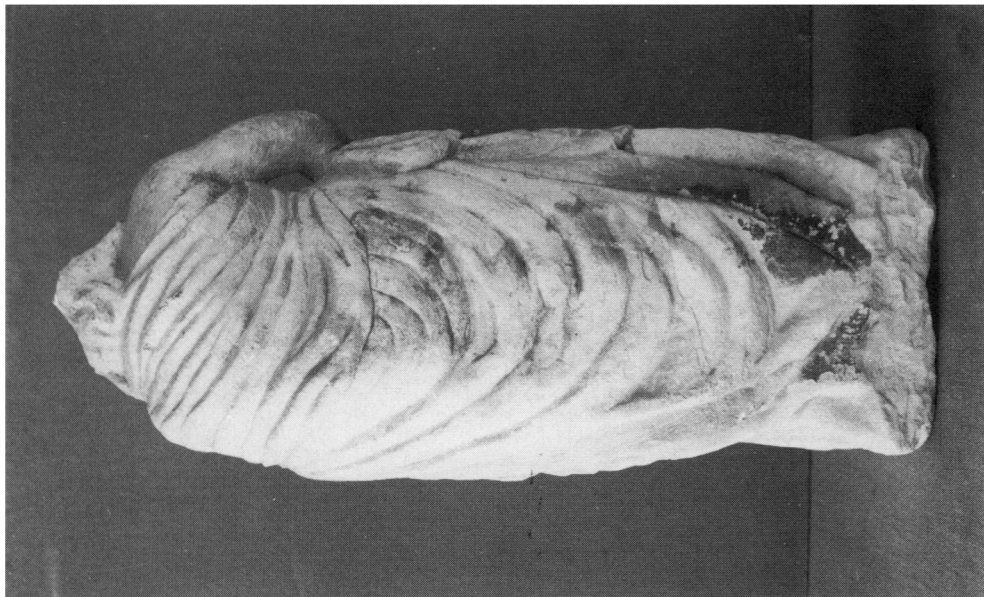
(Photo: copyright British Museum)

A. Roman silver spoon from Helpston, Cambs. (p. 309)



B. Ditches intaglio: left, photograph of intaglio; right, cast of intaglio (p. 322).

PLATE XXXIII



(Photo: R. Welbourn)
B. Roman sculpture from Well, N. Yorkshire: rear view (p. 324).



(Photo: R. Welbourn)
A. Roman sculpture from Well, N. Yorkshire: front view (p. 324).

PLATE XXXIV



(Photo: P. Crew)

A. Holyhead Mountain: the watch-tower from the S.W. Lines of robbed walls indicated by ranging-poles (p. 328).



(Photo: K. Thomas, National Museum of Wales)

B. Caerwent: a view of the courtyard house looking east (p. 334).

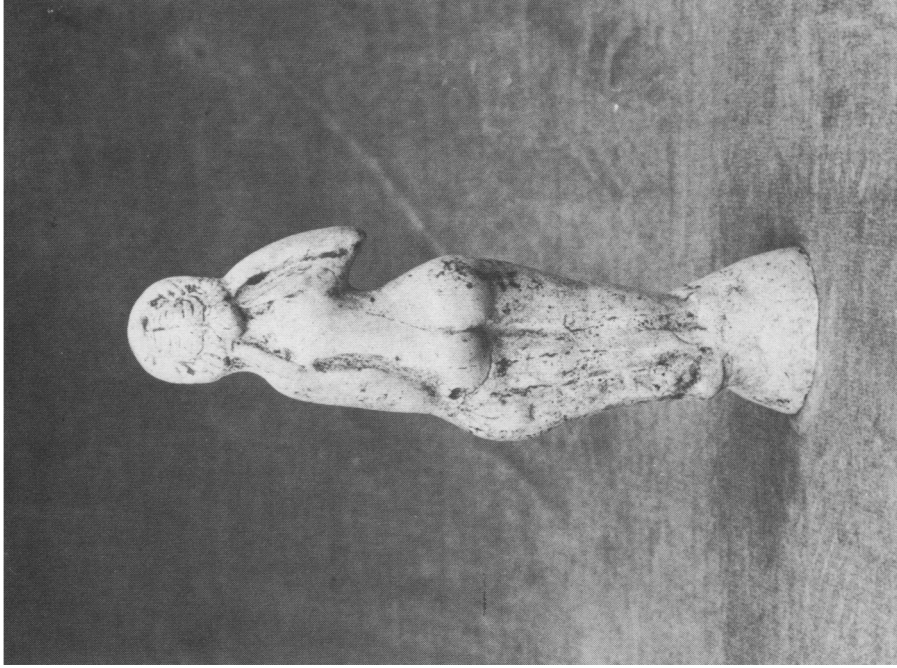
PLATE XXXV



(Photo: P. K. Harrington)

Bainesse Farm, Catterick: mortared masonry strip-building with apse and hypocausts (p. 348).

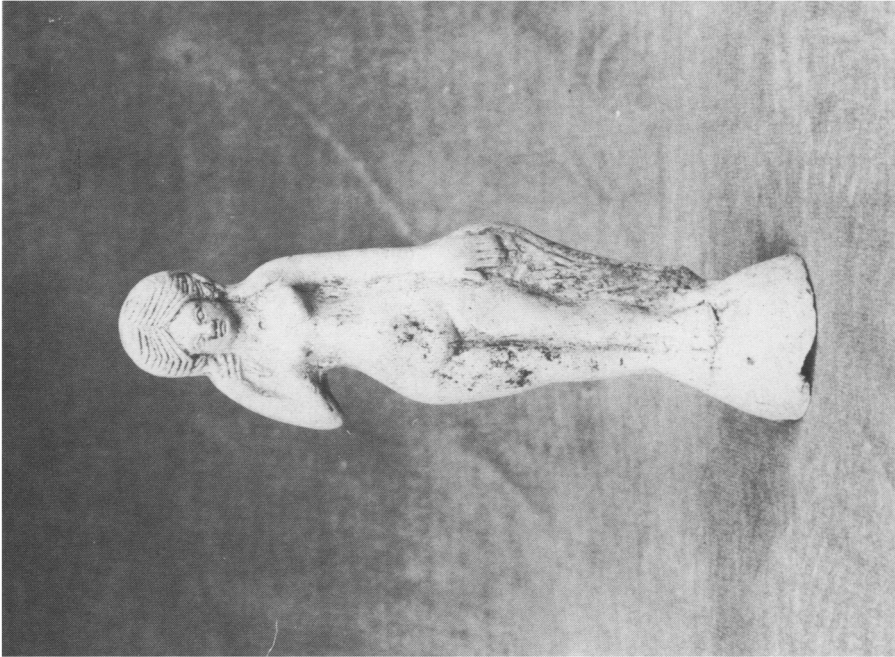
PLATE XXXVI



(Photo: M. Howard)

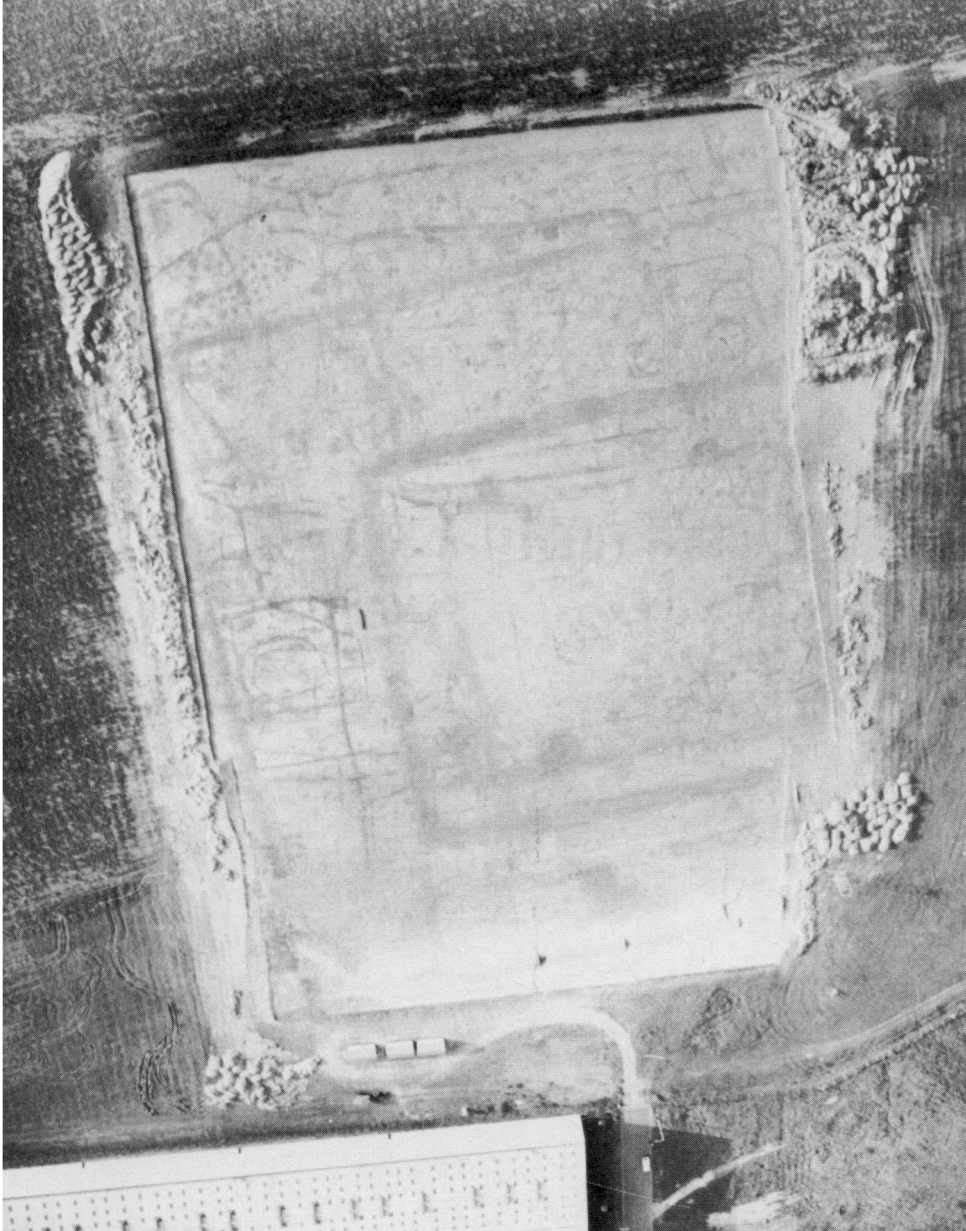
B.

Brampton: pipe-clay figurine of Venus. A. Front view. B. Rear view (p. 370).



A.

PLATE XXXVII



(Photo: D. A. Edwards, copyright Norfolk Archaeological L
Thetford: aerial photograph of triple-ditched enclosure site (p. 370).



(Photo: J. Bailey, copyright Museum of London)

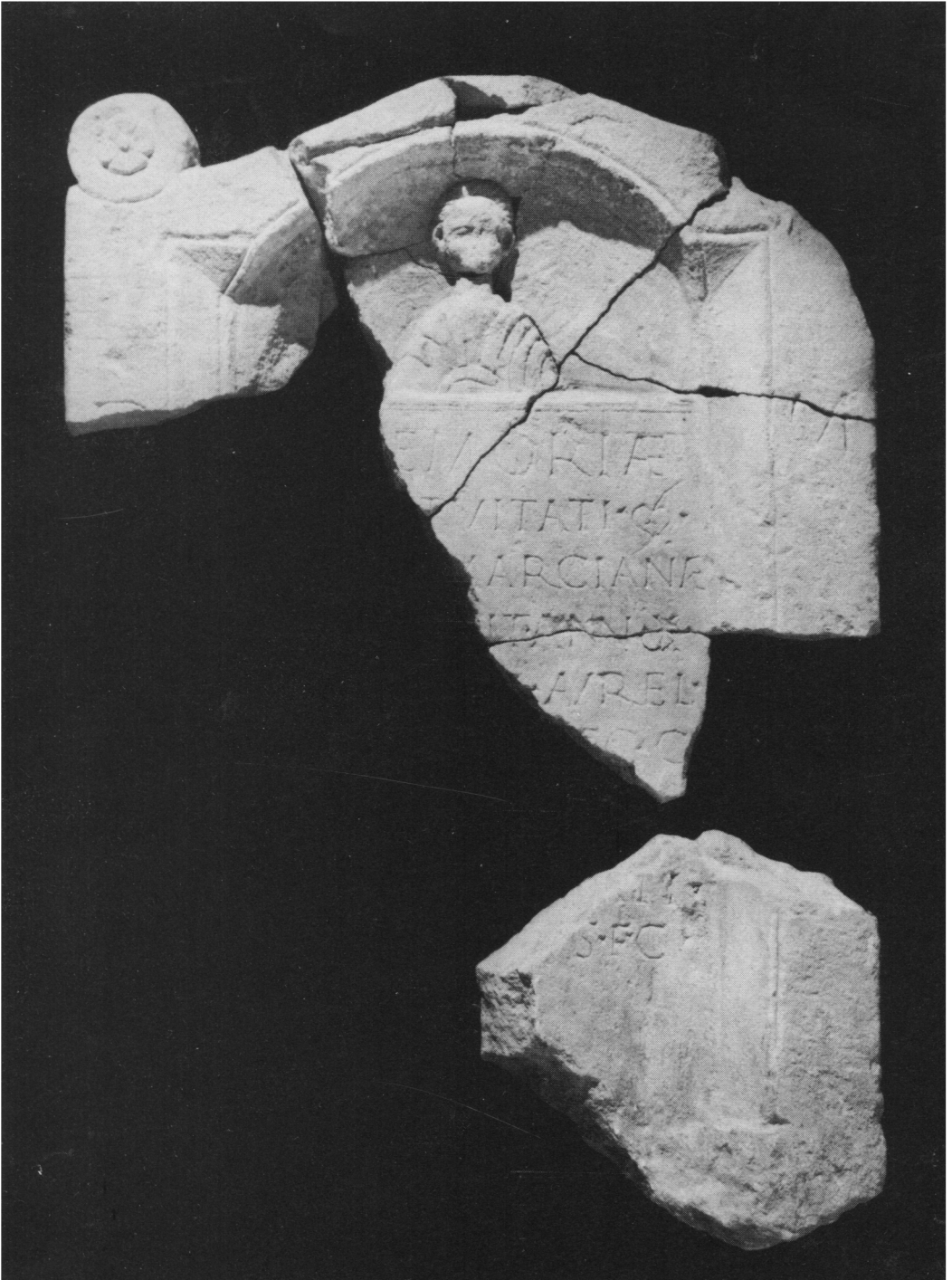
A. London, The City, 2-3 Cross Key Court, Cophall Avenue: section through mid-second-century road (cut by medieval pits) and its foundation of turves on a raft of branches and twigs (p. 373).



(Photo: J. Bailey, copyright Museum of London)

B. London, The City, St Peter's Hill: E. face of western monumental foundation; stonework supported by chalk platform and oak piles (p. 374).

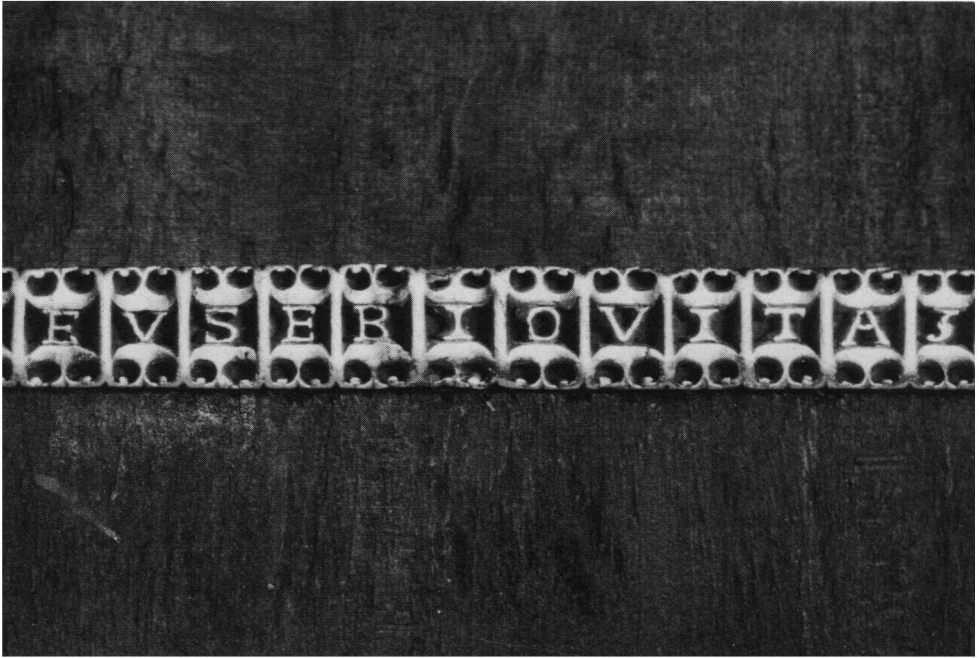
PLATE XXXIX



(Photo: copyright Museum of London)

London: tombstone, width 0·38 m (p. 396, No. 1).

PLATE XL



(Photo: copyright British Museum)

A. Bedford: gold ring, peripheral photograph, width of band 8 mm (p. 411, No. 14).



(Photo: copyright City Museum and Art Gallery, Gloucester)

B. Gloucester: cornelian intaglio, width 12 mm (p. 413, No. 24).

