



# LOOK AGAIN...

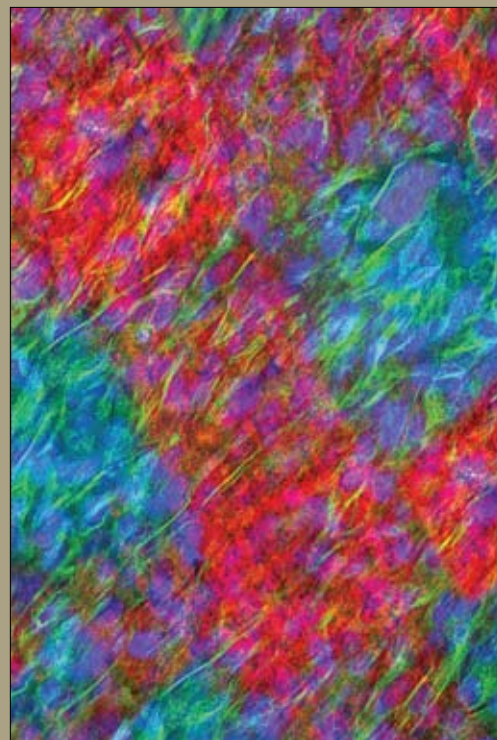
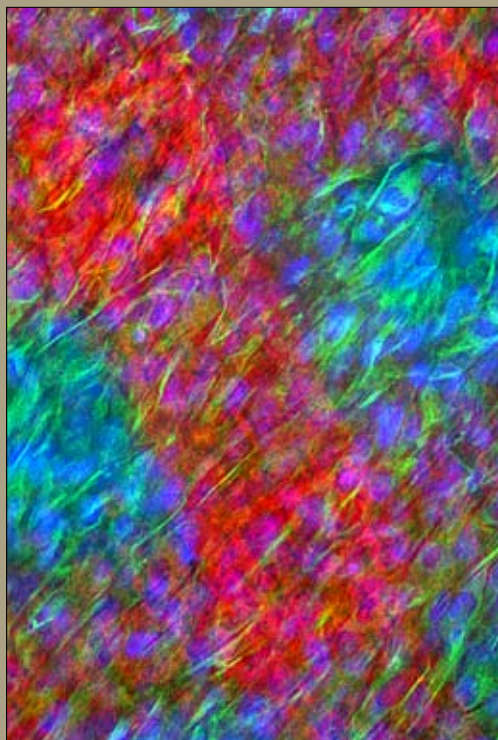
*Just for Fun!*

See if you can find the 8 differences in each set of images.

## Nuances of a living fabric

Results of immunofluorescence analysis, showing  $\alpha$ -sarcomeric actin (green) in cardiomyocytes derived from cardiac progenitor cells on the regular square grid of PLLA scaffold (phase contrast microscopy, red). Cells aligned in a characteristic direction. Nuclei were stained with DAPI (blue).

**Felicia Carotenuto, Paolo Di Nardo, and Enrico Traversa,**  
University of Rome Tor Vergata



Answers will be in February 2011 issue or on [www.mrs.org/LookAgain\\_Dec10](http://www.mrs.org/LookAgain_Dec10)

October 2010 answer key  
[www.mrs.org/LookAgain\\_Oct10](http://www.mrs.org/LookAgain_Oct10)

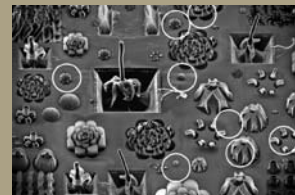
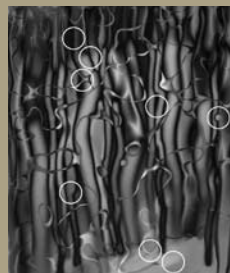


Image on the left was submitted to the Materials Research Society "Science as Art" competition ([www.mrs.org/scienceasart](http://www.mrs.org/scienceasart)).  
Image on the right was modified in Adobe Photoshop for this "Look Again" activity.



# LOOK AGAIN...

*Just for Fun!*

ANSWER KEY FOR DECEMBER 2010

## Nuances of a living fabric

Results of immunofluorescence analysis, showing a sarcomeric actin (green) in cardiomyocytes derived from cardiac progenitor cells on the regular square grid of PLLA scaffold (phase contrast microscopy, red). Cells aligned in a characteristic direction. Nuclei were stained with DAPI (blue).

**Felicia Carotenuto, Paolo Di Nardo, and Enrico Traversa,**  
University of Rome Tor Vergata

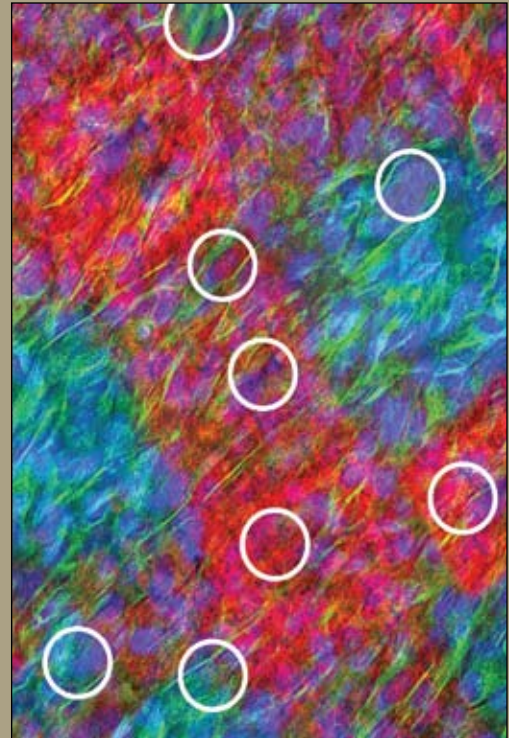
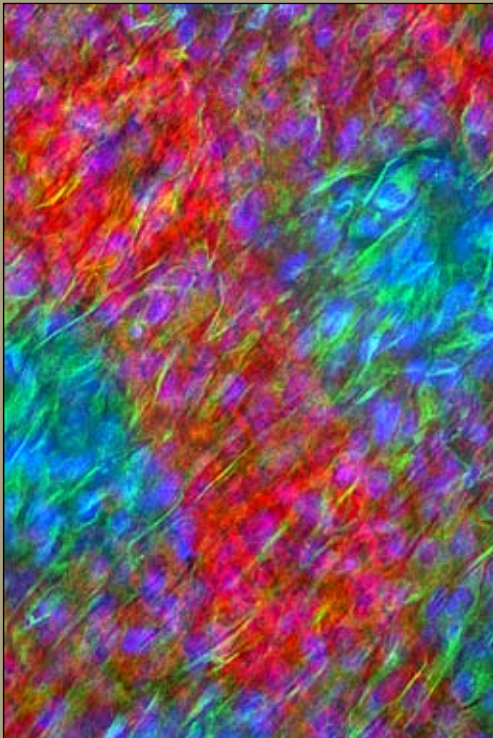


Image on the left was submitted to the Materials Research Society "Science as Art" competition ([www.mrs.org/scienceasart](http://www.mrs.org/scienceasart)).  
Image on the right was modified in Adobe Photoshop for this "Look Again" activity.