

New Theatre Quarterly

Edited by Clive Barker, *University of Warwick*
and Simon Trussler, *University of London*

New Theatre Quarterly has established itself as a leading journal in the field of theatre studies. It provides a vital international forum where theatrical scholarship and practice can meet, and where prevailing dramatic assumptions can be subjected to vigorous critical questioning.

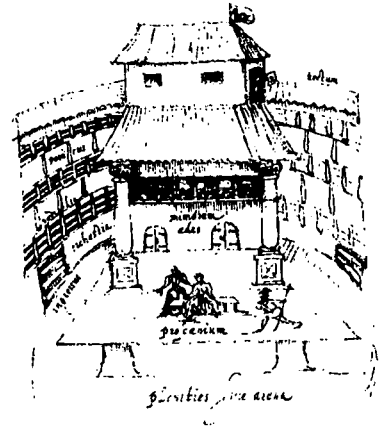
What does this mean to you?

NTQ has something for everyone by providing thought-provoking articles that you will refer to again and again. From theatre specialists to theatre-goers, *NTQ*'s news, analysis and debate will prove to be an invaluable source of theatre research.

Subscription information

Volume 12 in 1996, published quarterly. £45 for institutions and £25 for individuals. Airmail £15 per year extra. ISSN 0266-464X

For further information write to the Journals Marketing Department, Cambridge University Press, The Edinburgh Building, Cambridge CB2 2RU, UK. Tel: +44 (0)1223 325804; Fax: +44 (0)1223 315052.



"Every college library – every

drama department – every student of theatre – every theatre-goer has to subscribe." *Eric Bentley*

"It's hard, adult, and uncompromisingly serious... To be frank, it's the first time I've found it absolutely necessary (and stimulating) to read a theatre magazine." *Peter Hall*

"...the best theatre magazine I know of in English..." *Edward Bond*

"We should thank our lucky stars that *NTQ* has been around to stimulate the clapped-out brain cells of the English Theatre."

Charles Marowitz

"...unequivocally recommended as a primary source of critical studies on modern drama and the classical repertory." *Choice*



CAMBRIDGE
UNIVERSITY PRESS

Fromental Halévy, Nouvelle édition d'opéras choisis,
Vol. I, *La Juive*, édité par Karl Leich-Galland, IX + 786 p. relié, ISBN 3-925934-00-6, DM 540,-

Opéras français du XIXème siècle - reprints -

Série A, partitions chant et orchestre

Vol. I, Fromental Halévy, Guido et Ginevra, 803 p. relié, ISBN 3-925934-19-7, DM 540,-

Série B, partitions chant et piano

Vol. I, Fromental Halévy, *La Magicienne*, 367 p. ISBN 3-925934-10-3, DM 98,-

Vol. II, Charles Gounod, *Sapho*, 199 p. ISBN 3-925934-11-1, DM 86,-

Vol. III, Fromental Halévy, *La Juive*, 404 p. ISBN 3-925934-15-4, DM 98,-

Vol. IV, Félicien David, *Herculanum*, 356 p. ISBN 3-925934-16-2, DM 98,-

Vol. V, Fromental Halévy, Guido et Ginevra, 367 p. ISBN 3-925934-14-6, DM 98,-

Vol. VI, Daniel François Esprit Auber, *L'Enfant prodigue*, 324 p. ISBN 3-925934-13-8, DM 98,-

Vol VII, Fromental Halévy, *Le Juif errant*, 278 p. ISBN 3-925934-17-0, DM 98,-

Vol VIII, Fromental Halévy, *La Reine de Chypre*, 380p. ISBN 3-925934-18-9, DM 98,-

Vol IX, Giuseppe Verdi, *Les Vêpres siciliennes*, 415 p. ISBN 3-925934-22-7, DM 98,-

Critiques de l'opéra français du XIXème siècle

Vol. I, Fromental Halévy, *La Juive*, Dossier de presse parisienne (1835), édité par Karl Leich-Galland, 175 p., broché, ISBN 3-925934-02-2, DM 59,-

Vol. II, Giacomo Meyerbeer, *Le Pardon de Ploërmel*, Dossier de presse parisienne (1859), édité par Marie-Hélène Coudroy, 146p., broché, ISBN 3-925934-12-X, DM 59,-

Vol. III, Hector Belioz, *Benvenuto Cellini*, Dossier de presse parisienne (1838), edited by Peter Bloom, 190 p. broché, ISBN 3-925934-21-9, DM 59,-

Vol. IV, Hector Berlioz, *Les Troyens à Carthage*, Dossier de presse parisienne (1863), hrsg. von Frank Heidlberger, 199 p. broché, ISBN 3-925934-20-0, DM 59,-

Vol. V, Charles Gounod, *Mireille*, Dossier de presse parisienne (1864), édité par Marthe Galland, 226 p. broché, ISBN 3-925934-24-3, DM 59,-

Vol. VI, Giuseppe Verdi, *Les Vêpres siciliennes*, Dossier de presse parisienne (1855), édité par Hervé Gartoux, 146 p. broché, ISBN 3-925934-23-5, DM 59,-

Vol. VII, Jacques Offenbach, *Les Contes d'Hoffmann*, Dossier de presse parisienne (1881), hrsg. von Arnold Jacobshagen, 184 p. broché, ISBN 3-925934-25-1, DM 59,-

Etudes sur l'opéra français du XIXème siècle

Vol. I, Gottfried R. Marschall, *Massenet et la fixation de la forme mélodique française*, IX + 552 p. broché, ISBN 3-925934-03-0, DM 108,-

Vol. II, Marie-Hélène Coudroy, *La critique parisienne des "grands opéras" de Meyerbeer*, 526 p. broché, ISBN 3-925934-04-9, DM 108,-

Varia

Fromental Halévy, *Ouvertures: La Juive et La Magicienne*, éditées par Karl Leich-Galland, 110 p. relié, ISBN 3-925934-08-1, DM 126,-

Sold by the publisher or by the commerce

Musik-Edition Lucie Galland
23 Pfühl-Str. D 74076 Heilbronn - Germany



GUIDELINES FOR CONTRIBUTORS

Contributions may be sent to either editor:

Professor Arthur Groos
Department of German Studies
Goldwin Smith Hall
Cornell University
Ithaca
NY 14853
USA

Roger Parker
Faculty of Music
St. Aldate's
Oxford
OX1 1DB
UK

The return of contributions cannot be guaranteed unless return postage is provided.

When an article has been accepted for publication, the author is strongly encouraged to send a copy of the final version on computer disk (Apple Macintosh or IBM compatible PC) *together with* the hard copy typescript, giving details of the wordprocessing software used (Microsoft Word, Word or Word Perfect). However, the publisher reserves the right to typeset material by conventional means if an author's disk proves unsatisfactory.

Manuscripts should be double spaced throughout (including footnotes, etc.) and should be typed on one side of the paper with ample margins. Contributors with word processors are requested to underline rather than use an italic font, and to avoid justification of right margins, automatic hyphenation and bold face type.

Footnotes should be numbered consecutively and be typed, double spaced, on separate pages at the end. Musical examples, figures, tables, etc. should be supplied on separate sheets.

Contributors who wish to reproduce photographs should provide good black and white prints, full details of the source and the full address of the copyright holder if this differs. Photographs will not normally be considered unless they are an intrinsic part of the contribution, and their inclusion will always be at the discretion of the editors. The full address of the copyright holder should also be provided for any material used in which the contributor does not hold copyright.

Punctuation should follow standard British practice. Single quotation marks should be used with double reserved for quotations within quotations. Punctuation that is not part of the quoted material should be outside closing quotation marks, as should footnote indicators. Longer quotation should be indented left without quotation marks and double spaced. Prose citations should be in English unless the original is of particular importance, unpublished or inaccessible, in which case the original should be followed by a translation in square brackets. Verse citations should be in the original language followed by a prose translation in square brackets.

Dates should be on the following model: c. 1740, 1840s, 5 February 1943. References should be to: Act I scene 2, op. 1 no. 2 in E major, Ex. 12 and Exx. 12–14, Fig. 3 and Figs. 6–9, motif(s) and leitmotif(s). For precise identification of pitch, use this system.



Sample footnotes (do not abbreviate journal titles):

- ¹ John Whenham, *Claudio Monteverdi: 'Orfeo'*, Cambridge Opera Handbooks, 3rd edn (Cambridge, 1996), 44–6.
- ² Gerald Abraham, ed., *The Age of Beethoven, 1790–1830*, New Oxford History of Music, 8 (Oxford, 1982), 100–6.
- ³ Curt von Westernhagen, *Wagner: A Biography*, trans. Mary Whittall, 2 vols. (Cambridge, 1978), II, 77f.
- ⁴ Winton Dean, 'French Opera', in Abraham, *Beethoven*, 137–46.
- ⁵ Ernest Newman, *The Life of Richard Wagner*, IV (1947; rpt. New York, 1981), 212–15.
- ⁶ Edgar Stel, 'Beethoven's *Leonora* and *Fidelio*', *Musical Quarterly*, 7 (1921), 228–31.
- ⁷ K. T. Rohrer, '“The Energy of English Words”: A Linguistic Approach to Henry Purcell's Method of Setting Texts', Ph.D. diss. (Princeton University, 1980), 33.
- ⁸ Rohrer, 249n3.
- ⁹ Whenham (see n. 1), 57.

First proofs may be read and corrected by contributors provided that they can give the editors an address through which they can be reached without delay and are able to return the corrected proofs, by airmail where necessary, within three days of receipt.

New in paperback

UNSUNG VOICES

Opera and Musical Narrative in the Nineteenth Century
Carolyn Abbate

"This important book concerns not only particular operas but certain general aspects of the way in which we hear music. . . . We will . . . want to reflect further on a good many of its arguments . . . because what Abbate offers in *Unsung Voices* is not only . . . a set of conclusions but **a powerful machine to think with.**"—Lawrence Rosenwald, *Opera Quarterly*

"Abbate establishes a critical dialogue between music's desire to convey narrative information and its sensual resistance to such signification. . . .

Abbate is the most original writer on Wagner to appear since Dahlhaus. . . . Her essay 'Brünnhilde Walks by Night' is a *tour de force* of imaginative interpretation."

—David Schiff, *The New Republic*

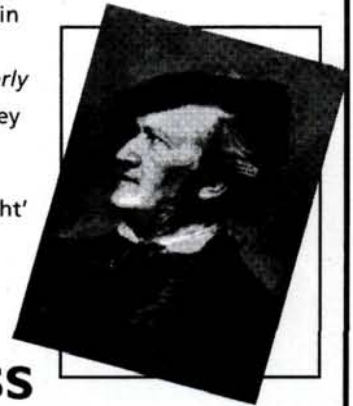
Princeton Studies in Opera

Now in paper \$16.95 ISBN 0-691-02608-4 Available April

PRINCETON UNIVERSITY PRESS

AVAILABLE AT FINE BOOKSTORES OR DIRECTLY FROM THE PUBLISHER: 800-777-4726

WORLD WIDE WEB SITE: [HTTP://AAUP.PUPRESS.PRINCETON.EDU/PUPRESS](http://AAUP.PUPRESS.PRINCETON.EDU/PUPRESS)



CAMBRIDGE
UNIVERSITY PRESS



0954-5867(199603)8:1;1-M