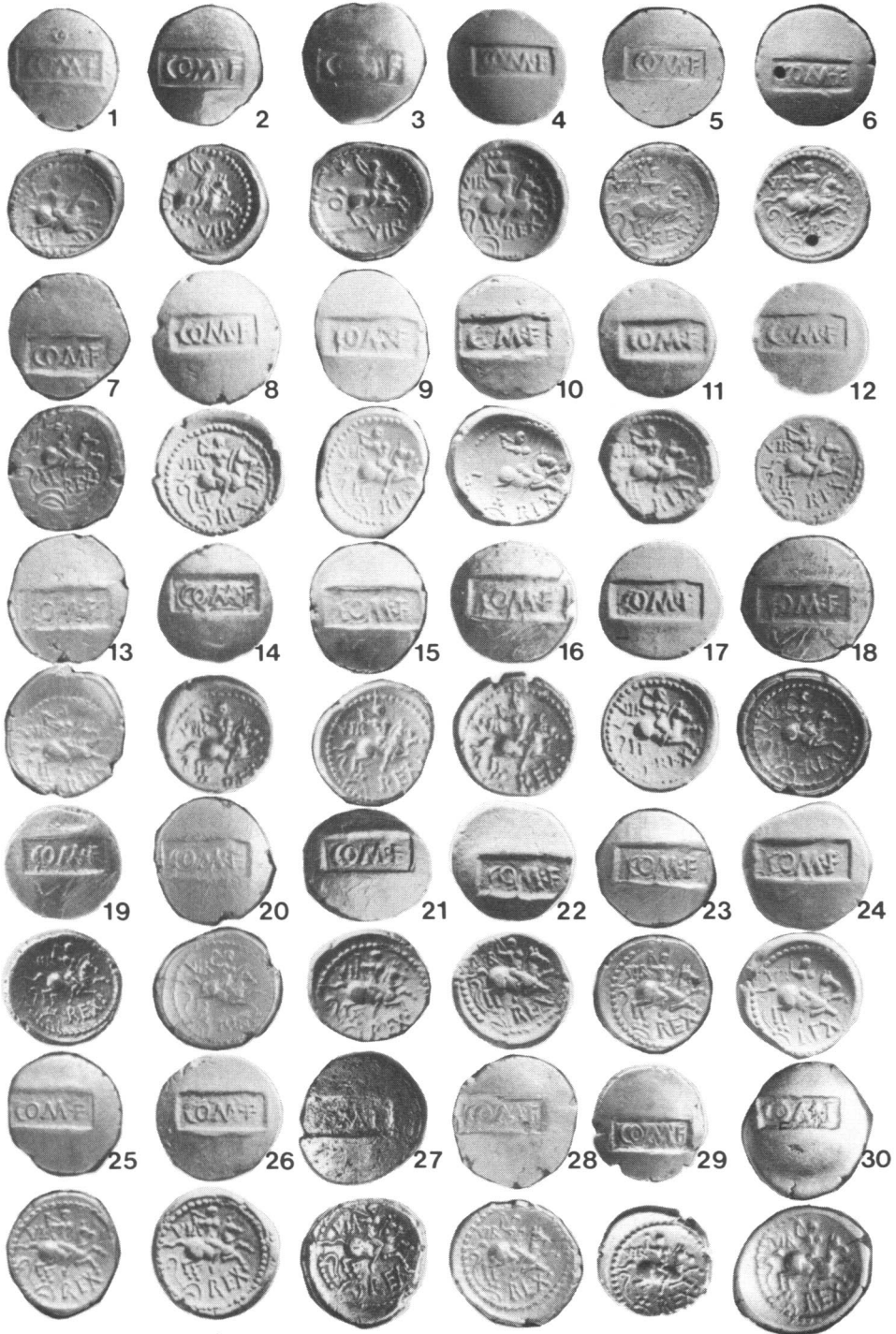


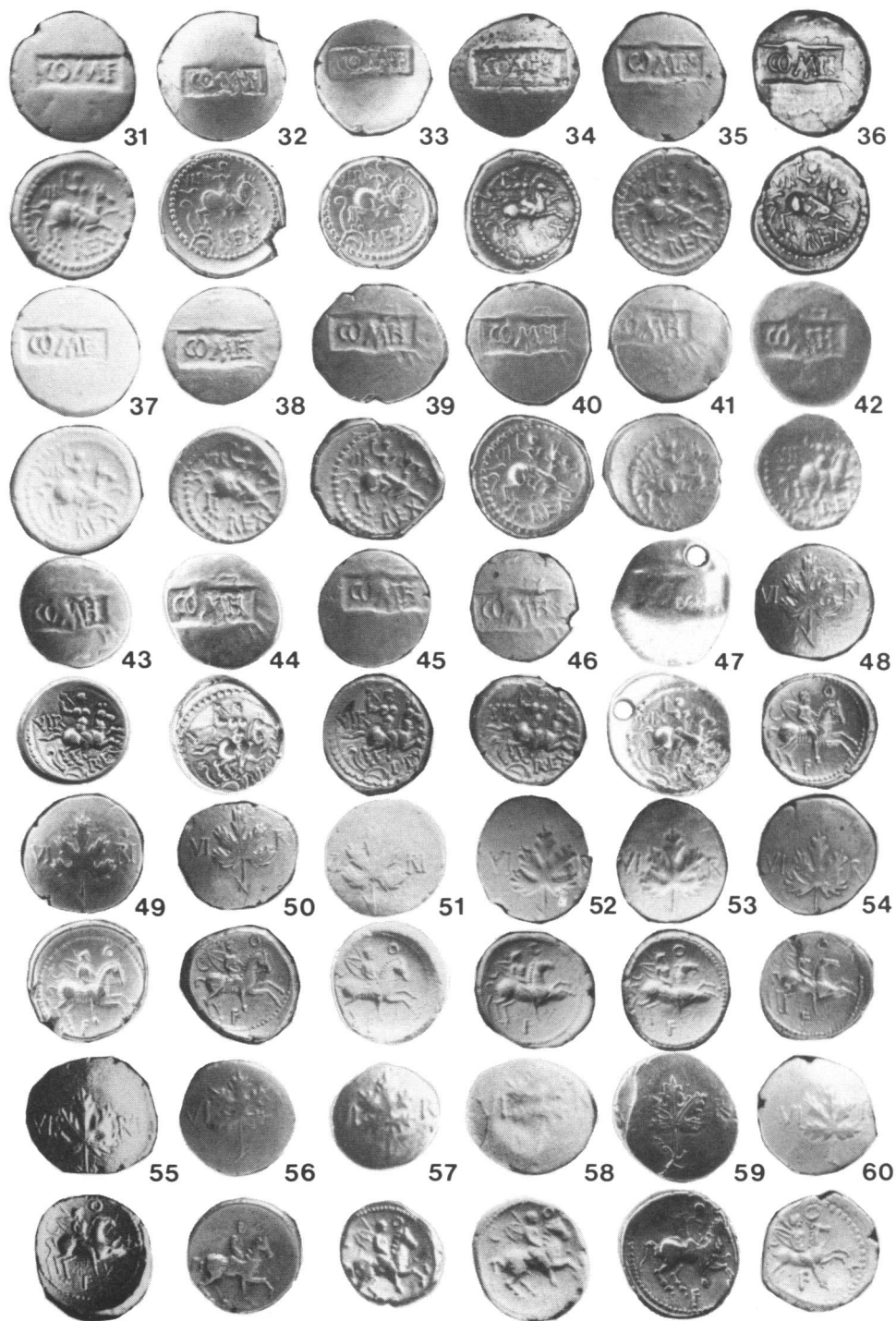
PLATE I



(Photo: Institute of Archaeology, Oxford)

Gold Coins of Verica, Nos. 1-30 (Scale 1:1).
See pp. 9-10 for description.

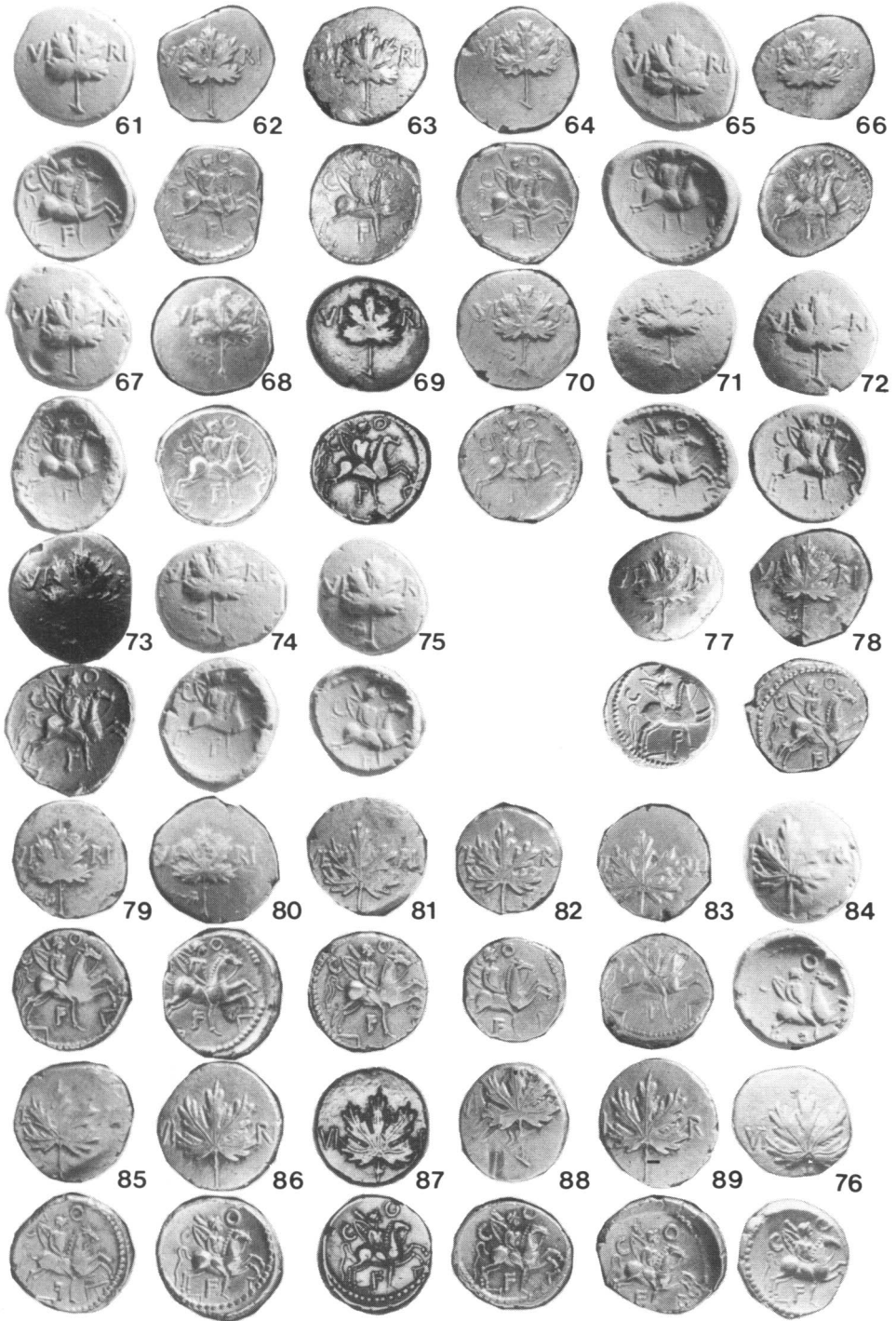
PLATE II



(Photo: Institute of Archaeology, Oxford)

Gold Coins of Verica, Nos. 31-60 (Scale 1:1).
See pp. 10-11 for description.

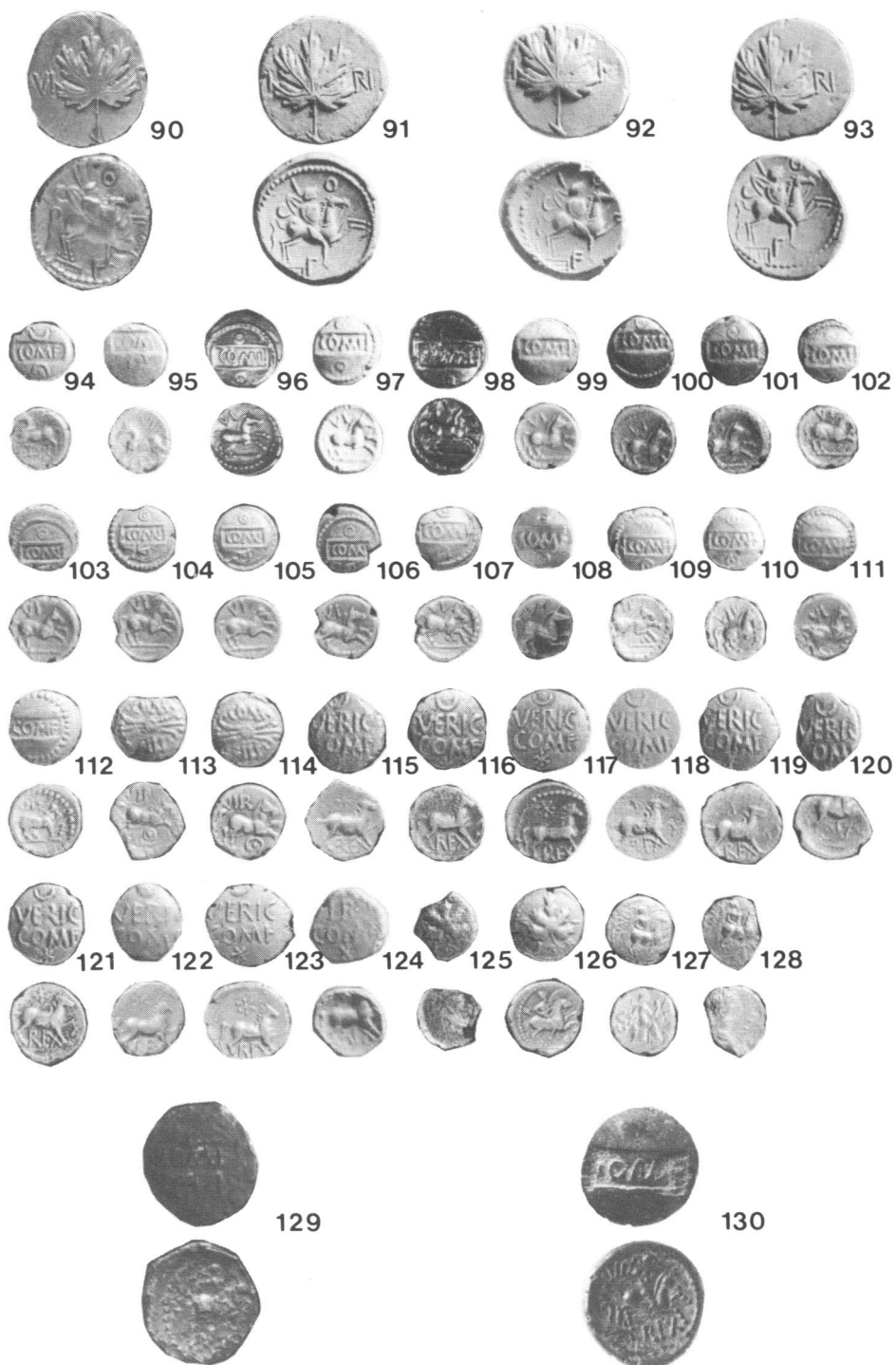
PLATE III



(Photo: Institute of Archaeology, Oxford)

Gold Coins of Verica, Nos. 61-75, 77-89, and 76.
See p. 11 for description.

PLATE IV



(Photo: Institute of Archaeology, Oxford)

Gold Coins of Verica, Nos. 90–130.
See pp. 11–14 for description.

PLATE V



(Photo: T. F. C. Blagg)

A. Temple of Sulis Minerva at Bath: the Corinthian Capital (p. 101).



(Photo: R. Wilkins)

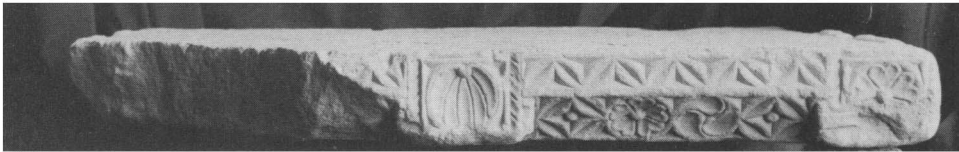
B. Temple of Sulis Minerva at Bath: the Cornice (p. 104).

PLATE VI



(Photo: R. Wilkins)

A. Temple of Sulis Minerva at Bath: the Gorgon Pediment, detail of the ornament (p. 106).



(Photo: A. T. Morley Hewitt)

B. Stone Table-top No. 16 from West Park Villa, Rockbourne, Hants. (p. 169). Scale c. 1:6.



(Photo: A. T. Morley Hewitt)

C. The same, showing decoration on surface (p. 169). Scale c. 1:7.

PLATE VII



(Photo: City Museum, Bristol)

A. Stone Table-top No. 1 (1) from Gatcombe, Avon (p. 169).



(Photo: City Museum, Bristol)

B. Stone Table-top No. 1 (2) from Gatcombe, Avon (p. 175).

PLATE VIII



(Photo: Otto Fein, copyright Warburg Institute)
B. Statue of a Genius from the Walbrook Mithraeum,



(Photo: Carlisle Museum and Art Gallery)
A. Statue of a Genius from Burgh-by-Sands (n. 179).

PLATE IX



(Photo. R. Wilkins and N. Pollard)

The Cogidubnus inscription from Chichester, *RIB* 91 (p. 243). There is some reflection of light from the covering glass in parts of lines 3 and 4.

PLATE X

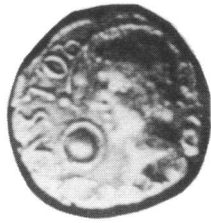


(Photo: R. Wilkins and N. Pollard)

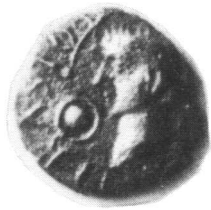
Details of the Cogidubnus inscription from Chichester (p. 244).

PLATE XII

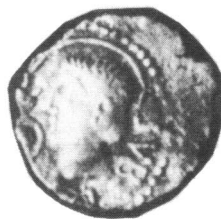
6



7



8



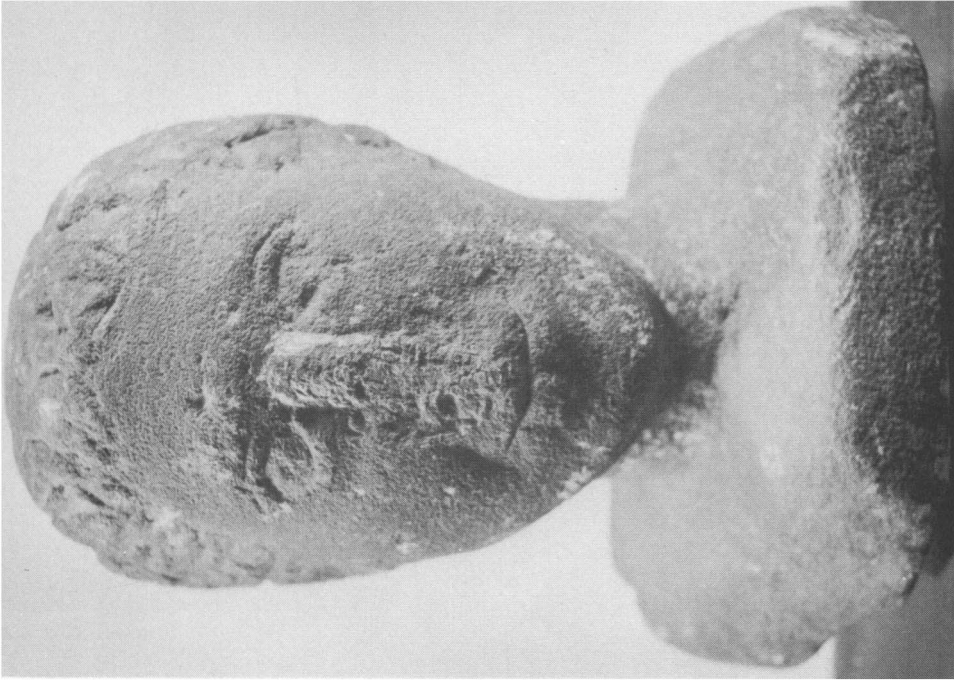
9



(Photo: H. R. Mossop)

Four Icenian silver coins inscribed SUBRI PRASTO/ESICO FECIT (p. 258). Scale 2:1.

PLATE XIII



(Photo: R. F. J. Jones)



Stone head from Chester-le-Street (pp. 260 f.). Height: 39 cm.

PLATE XIV



(Photo: G. D. B. Jones)

A. Burgh-by-Sands I: fort-site from W, with watch-tower near E side. View looking east (p. 281).



(Photo: Richard Jones)

B. Binchester, Co. Durham: fourth-century courtyard of Commander's House with part of arched entrance in foreground (p. 284).

PLATE XV



(Photo: A. E. Collins)

A. Great Chesterford, Essex: silver votive mask from the temple. Scale 1:2 (p. 309).



(Photo: Rosemary Smith)

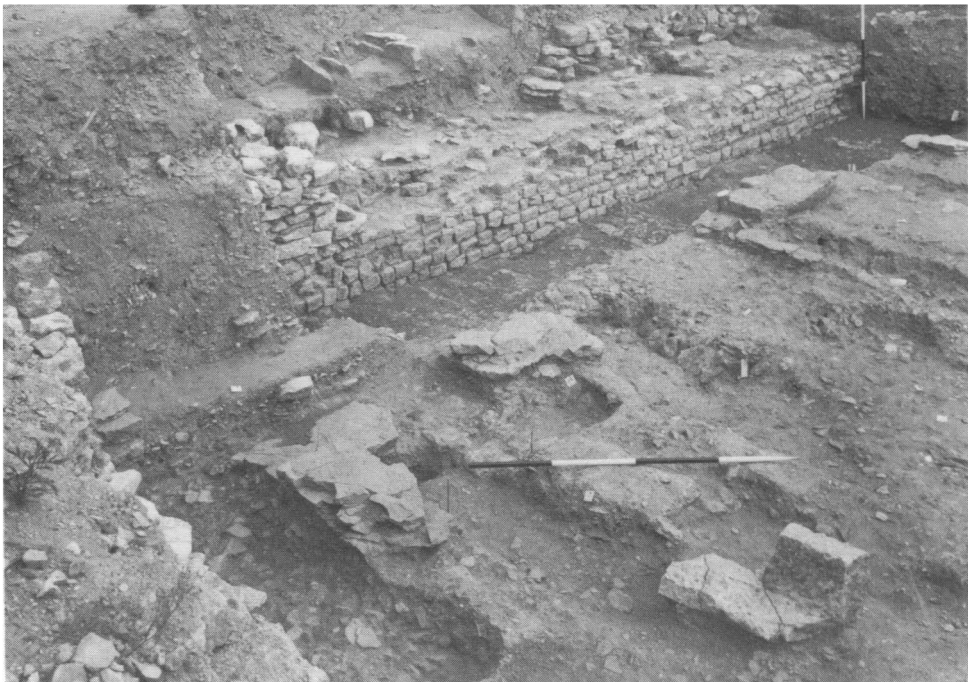
B. Chester-le-Street, Co. Durham: face-pot containing bones of small dog (p. 285).

PLATE XVI



(Photo: H. N. Hawley)

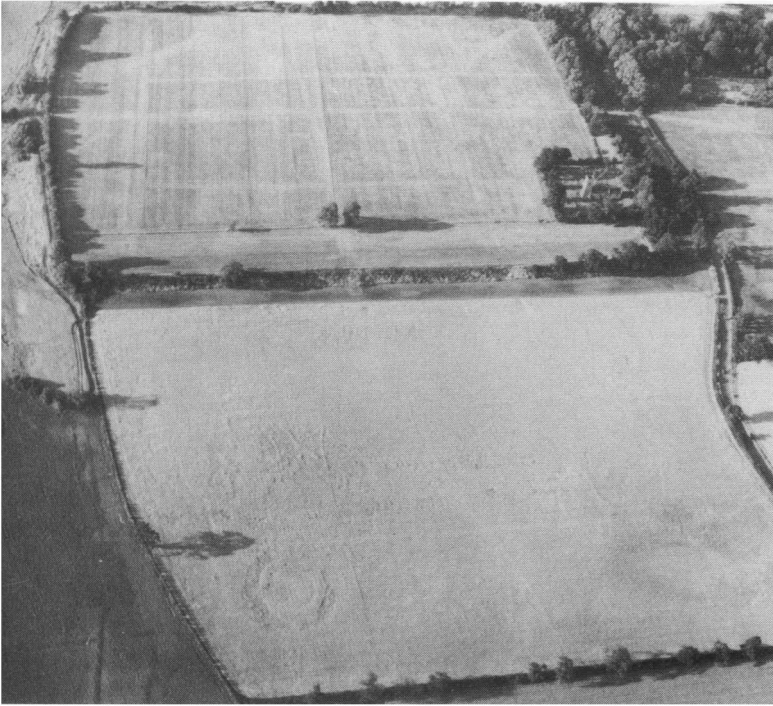
A. Lincoln, St. Paul-in-the-Bail: double row of N-S post-holes representing the E aisle of the cross-hall of the *principia*, looking SSW (p. 294).



(Photo: H. N. Hawley)

B. Lincoln, St. Paul-in-the-Bail: wall and fragments of paving-slabs in forum courtyard, much disturbed by later graves (p. 294). Looking SE.

PLATE XVII



(Photo: E. A. Horne)

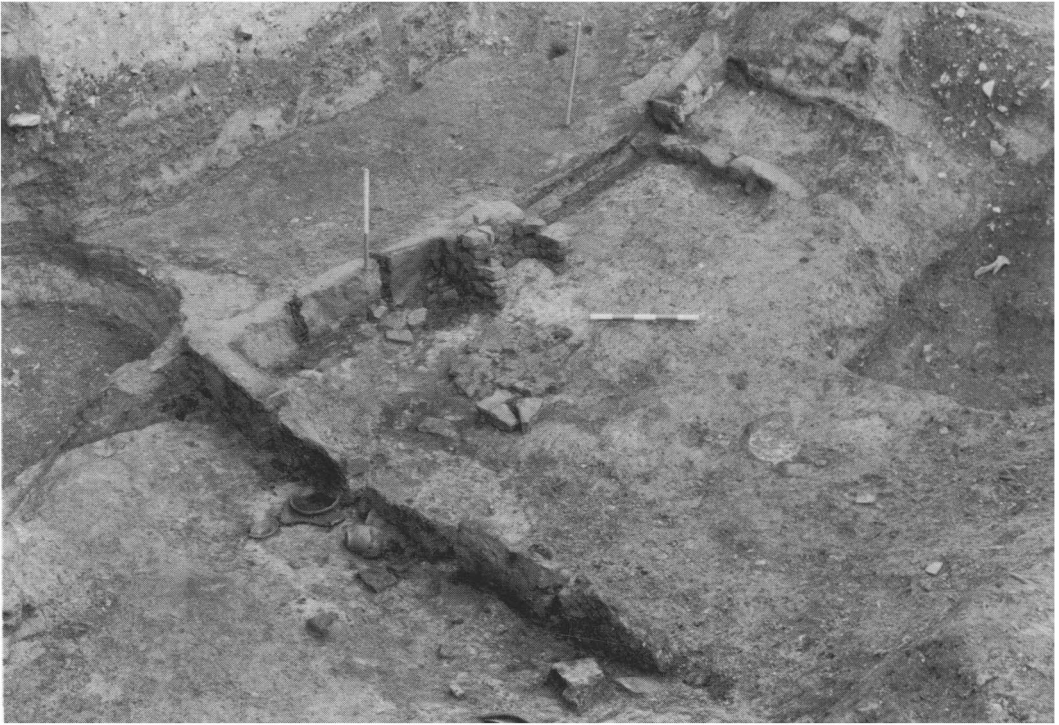
A. Caistor St. Edmund, Norfolk: crop-marks of features S of *Venta Icenorum*, looking N (p. 307).



(Photo: E. A. Horne)

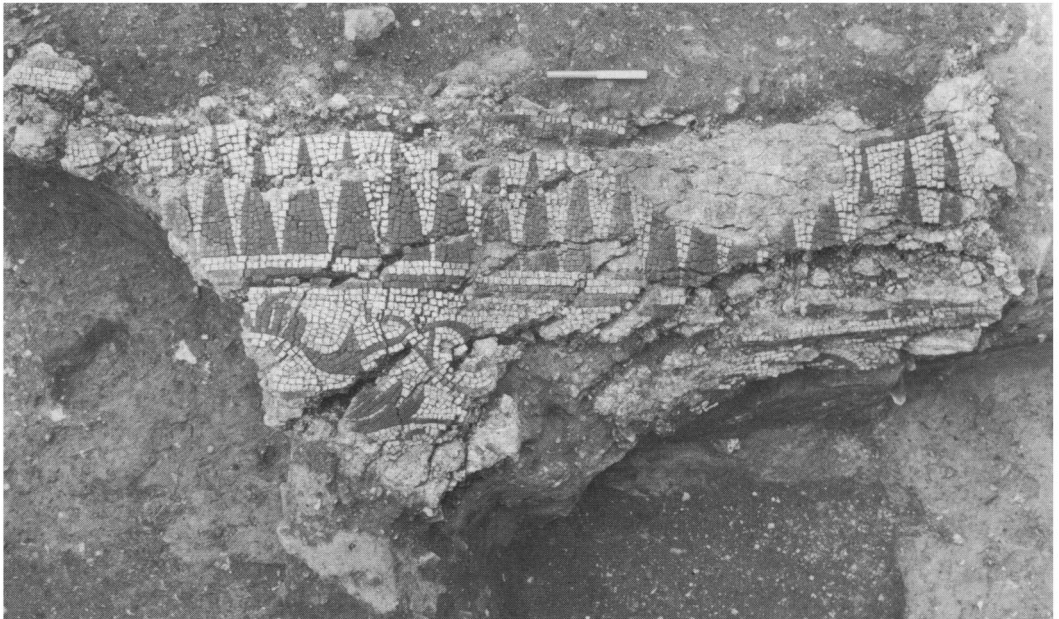
B. Burgh Castle, Suffolk: crop-marks of enclosures SE of the fort, looking N (p. 307).

PLATE XVIII



(Photo: T. Hurst)

A. London, G.P.O., Newgate Street: clay walls of northerly rooms in eastern early second-century building just before the Hadrianic fire, looking SE (p. 311).



(Photo: J. Bailey)

B. London, Watling Court: late first- or early second-century mosaic (p. 313).

PLATE XIX



(Photo: Chichester Excavation Committee)

A. Chichester: inscribed slab (p. 339, No. 1). Scale 1:5.



(Photo: Carlisle Museum and Art Gallery)

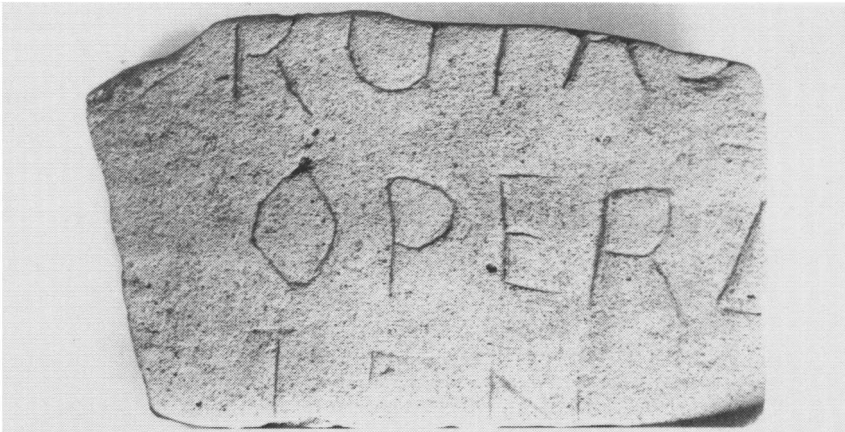
B. Chesters: inscribed altar (p. 346, No. 7). Scale 1:8.

PLATE XX



(Photo: Lincoln Archaeological Trust)

A. Lincoln: inscribed slab (p. 345, No. 5). Scale 1:4.



(Photo: Manchester University Department of Archaeology)

B. Manchester, Deansgate: inscribed amphora-fragment (p. 353, No. 34). Scale 1:2.