

# Sequelae of tick-borne encephalitis in retrospective analysis of 1072 patients

Piotr Czupryna<sup>1</sup>, Sambor Grygorczuk<sup>1</sup>, Katarzyna Krawczuk<sup>2</sup>,  
Sławomir Pancewicz<sup>2</sup>, Joanna Zajkowska<sup>1</sup>, Justyna Dunaj<sup>1</sup>,  
Anna Matosek<sup>1</sup>, Maciej Kondrusik<sup>1</sup> and Anna Moniuszko-Malinowska<sup>1</sup>

<sup>1</sup>Medical University of Białystok, Białystok, Poland and <sup>2</sup>University Hospital of Białystok, Białystok, Poland

## Original Paper

**Cite this article:** Czupryna P, Grygorczuk S, Krawczuk K, Pancewicz S, Zajkowska J, Dunaj J, Matosek A, Kondrusik M, Moniuszko-Malinowska A (2018). Sequelae of tick-borne encephalitis in retrospective analysis of 1072 patients. *Epidemiology and Infection* **146**, 1663–1670. <https://doi.org/10.1017/S0950268818002005>

Received: 2 November 2017

Revised: 8 June 2018

Accepted: 25 June 2018

First published online: 26 July 2018

### Key words:

Sequelae; TBE; tick; vaccination

### Author for correspondence:

Anna Moniuszko-Malinowska, E-mail: [annamoniuszko@op.pl](mailto:annamoniuszko@op.pl)

## Abstract

Tick-borne encephalitis (TBE) is an emerging vector-borne disease in Europe. The aim of the study was to evaluate sequelae and to analyse the potential risk factors predisposing to sequelae development. We performed a retrospective analysis of medical records of 1072 patients who received a 1-month follow-up appointment after hospital discharge. Medical data, such as patients' age, gender, place of living, subjective complaints, neurological and psychiatric sequelae were evaluated twice: at the moment of discharge and at follow-up visits 1 month after discharge. We observed that sequelae may affect 20.6% of TBE patients. Subjective sequelae were more frequent than subjective complaints during the hospitalisation ( $P < 0.001$ ), while objective neurological symptoms during the hospitalisation were more pronounced than neurological sequelae ( $P < 0.001$ ). Patients with meningoencephalomyelitis were predisposed to neurological complications, while subjective symptoms were more common in meningoencephalitis. Independent risk factors for sequelae development were: age and cerebrospinal fluid (CSF) protein concentration. The risk of late neurological complications persisting was increased in patients with higher CSF protein concentration. Based on the results of our study we concluded that, there is a need for a better vaccination program, which would prevent the development of sequelae.

## Introduction

Tick-borne encephalitis (TBE) is an emerging vector-borne disease in Europe caused by tick-borne encephalitis virus (TBEV) which belongs to the *Flaviviridae* family [1, 2].

There are 3 subtypes of TBEV: European (endemic in rural and forested areas of Central, Eastern and Northern Europe), Far-Eastern (endemic in Far-Eastern Russia and in forested regions of China and Japan) and Siberian subtype (endemic in the Urals region, Siberia and Far-Eastern Russia, and also in some areas in North-Eastern Europe) [3].

The number of TBE cases in Europe varies depending on the country and ranges from a few up to 1000 cases per year [3].

In Poland, TBE morbidity increased several fold in 1993 and has remained constant since then [4]. According to the National Hygiene Institute, 200–300 cases are reported annually [5]. The cases from Podlaskie Voivodeship constitute *ca.* 46% of all the cases noted in Poland [6]. The Department of Infectious Diseases and Neuroinfections of the Medical University of Białystok is a reference centre for the whole region, so the majority of TBE patients are hospitalised here.

The clinical course of TBE may present as meningitis (M), meningoencephalitis (ME) or meningoencephalomyelitis (MEM) [7, 8]. M is usually mild and patients recover after 2–3 weeks of symptomatic treatment. In patients with ME and MEM, the course of the disease is more severe. The mortality rate is 1–4% and the fatal outcome is usually observed in the elderly or immunodeficient patients, but may also happen in young persons [9].

Although most of patients quickly recover from the disease, some require further neurological and psychiatric treatment due to persisting symptoms. Sometimes the sequelae might be the continuation of symptoms from the acute phase, yet in some cases they may appear after hospitalisation. The aim of the study was to evaluate sequelae in patients hospitalised because of TBE and analyse the potential risk factors predisposing to sequelae development.

## Material and methods

A retrospective analysis of medical records of 1072 patients with TBE hospitalised in the Department of Infectious Diseases and Neuroinfections of the Medical University of Białystok between 1993 and 2014 was performed. All patients had 1-month follow-up appointment after

**Table 1.** Definition of TBE confirmed case

Clinical criteria	Laboratory criteria (at least one of the following)
Any person with symptoms of CNS inflammation (e.g. M, meningoencephalitis, encephalomyelitis and encephaloradiculitis)	(1) TBE specific IgM and IgG antibodies in blood
	(2) TBE specific IgM antibodies in CSF
	(3) Seroconversion or fourfold increase of TBE-specific antibodies in paired serum samples
	(4) Detection of TBE viral nucleic acid in a clinical specimen
	(5) Isolation of TBE virus from clinical specimen

the first hospital discharge. The duration of further observation lasted from 6 months to 10 years and depended on the patients' clinical status and occurrence of sequelae.

Medical data, such as patients' age, gender, place of living, subjective complaints (such as headache, vertigo, sleep disorders and fatigue), neurological (such as upper limbs paresis, lower limbs paresis, sensation disorders, cranial nerves paresis and cerebellar syndrome) and psychiatric sequelae (such as irritability, concentration disorders, memory impairment, depression, anxiety, psychotic and psychoorganic symptoms) were analysed twice: at the moment of discharge and at follow-up visits 1 month after discharge (Table 1). Patients were examined by specialists: a neurologist and a psychiatrist.

Psychiatric symptoms were diagnosed by a clinical psychiatrist, therefore we considered these symptoms objective. Among these were memory and concentration impairment. The symptoms reported only by patients but with no clinical confirmation were defined as subjective complaints. The statistical analysis included laboratory parameters such as data from cerebrospinal fluid (CSF) general analysis.

Sequelae were defined as symptoms that persisted or appeared at least 1 month after the first hospitalisation (discharge from hospital) and affected patients' life.

TBE was confirmed by the detection of specific antibodies with enzyme-linked immunosorbent assay (ELISA) using the kit of Virion/Serion (Wurzburg, Germany) according to the manufacturer's instructions.

TBE antibodies' titre was measured with an Enzygnost Anti-TBE/FSME Virus (IgG, IgM) Siemens test (enzyme immunoassay for the qualitative detection and quantitative determination of specific antibodies to the TBE virus in the human serum and plasma). The measuring range for the quantitative antibody determination of anti-TBE virus IgG is 7–700 U/ml.

The result of the IgM test was quantified by forming a quotient from the absorbance value of the test sample and the appropriate cut-off as the index. The index for the upper margin for retesting ('retest index') was calculated by dividing the value of the upper margin for retesting (cut-off +0.1) by the cut-off. Index 1.4 times higher than the retest index was considered a positive result.

The patients enrolled in the study fulfilled clinical, laboratory and epidemiological criteria of the TBE definition [10] (Table 1).

Confirmed TBE case is diagnosed in any person meeting the clinical and laboratory criteria for case confirmation.

TBE was confirmed in all of the included patients.

As far as clinical forms of TBE are concerned, M was diagnosed in 530 patients (49.4%), ME in 452 patients (42.2%) and MEM in 90 patients (8.4%) (Table 2).

M was diagnosed on the basis of inflammatory parameters in CSF with no focal neurological symptoms. ME was diagnosed when the inflammatory parameters in CSF, altered consciousness and focal neurological symptoms were present. MEM was diagnosed when ME symptoms were accompanied by flaccid paralyzes of the limbs.

The patients were asked about vaccination status against Flaviviruses, including TBE and yellow fever. All patients were local inhabitants and did not report recent journeys to abroad, therefore there was no need for cross-reactive exclusion reaction with other *Flaviviridae*. There has been no confirmed human case of West-Nile Virus or Yellow Fever Virus infection reported in Poland so far. The patients declared no vaccination against YFV, JEV or TBE.

### Statistical analysis

Statistical analysis was performed using Statistica 12. Groups were compared by Kruskal–Wallis test and Mann–Whitney *U* test. Positive outcome (defined as no death or ICU treatment) in groups with different clinical forms of TBE was calculated by the Kaplan–Meier method and compared with the use of the log-rank test. Hazard ratio for sequelae occurrence was calculated with logistic regression. Receiver operating characteristic (ROC) curve analysis was performed for protein concentration in CSF.

## Results

### Clinical symptoms on discharge

168 out of 1072 (15.7%) analysed patients were discharged with the remaining symptoms (Table 3). Among them there were 65 men (38.7%) and 103 women (61.3%). 93 subjects were inhabitants of towns and cities (55.4%) and 75 of villages (44.6%).

The most frequent subjective complaints were sleep disorders, cognitive symptoms – concentration disorders, psychiatric–psychotic symptoms and neurologic–cerebellar syndrome (Table 3).

### Clinical symptoms during follow-up (sequelae)

221 out of 1072 (20.6%) analysed patients developed sequelae (Table 4). Among them there were 146 men (66.1%) and 75 women (33.9%). 124 were inhabitants of towns and cities (56.1%) and 97 of villages (43.9%). The most frequent subjective sequelae were headaches, cognitive sequelae – memory impairment, psychiatric sequelae – depression and neurological sequelae – upper limbs paresis (Table 3).

Sequelae were observed in 67 patients with M (12.6%), 115 patients with ME (25.4%) and 39 patients with MEM (43.3%) (Table 2).

**Table 2.** Comparison of sequelae prevalence in patients with M, ME and MEM

	At the moment of discharge				After 1 month			
	Subjective	Cognitive	Psychiatric	Neurological	Subjective	Cognitive	Psychiatric	Neurologic
M, <i>n</i> = 530	11 (2.1)	6 (1.1%)	1 (0.2%)	0 (0%)	47 (8.9%)	18 (3.4%)	6 (1.1%)	2 (0.4)
ME, <i>n</i> = 452	26 (5.8%)	38 (8.4%)	26 (5.8%)	64 (14.2%)	64 (14.2%)	27 (6%)	4 (0.9%)	21 (4.6%)
MEM, <i>n</i> = 90	2 (2.2%)	5 (5.6%)	4 (4.4%)	37 (41.1%)	7 (7.8%)	3 (3.3%)	6 (6.7%)	24 (26.7%)
Overall <i>n</i> = 1072	39 (3.6%)	49 (4.6%)	31(6.5%)	101 (9.4%)	118 (11%)	58 (5.4%)	16 (1.5%)	47 (4.4%)
<i>P</i> , M vs. ME	0.03	0.001	0.001	0.001	0.09	0.05	0.7	0.001
<i>P</i> , M vs. MEM	0.92	0.03	0.001	0.001	0.73	0.97	0.001	0.001
<i>P</i> , ME vs. MEM	0.16	0.36	0.62	0.001	0.1	0.31	0.001	0.001

**Table 3.** Prevalence of symptoms in TBE patients (*n* = 1072) at the moment of discharge from hospital and after 1 month

	At the moment of discharge				After 1 month				<i>P</i> **
	<i>n</i> = 1072	M, <i>n</i> = 668	F, <i>n</i> = 404	<i>P</i> *	<i>n</i>	M, <i>n</i> = 668	F, <i>n</i> = 404	<i>P</i> *	
<b>Subjective</b>									
Headache	12 (1.1%)	6 (0.9%)	6 (1.5%)	0.38	101 (9.4%)	56 (8.4%)	45 (11.1%)	0.08	<0.05
Vertigo	7 (0.7%)	4 (0.6%)	3 (0.7%)	0.79	29 (2.7%)	22 (3.3%)	7 (1.7%)	0.09	<0.05
Sleep disorders	22 (2.1%)	14 (2.1%)	8 (2%)	0.86	10 (0.9%)	8 (1.2%)	2 (0.5%)	0.23	<0.05
Fatigue	0 (0%)	0 (0%)	0(0%)		47 (4.4%)	34 (5.1%)	13 (3.2%)	0.15	<0.05
<i>n</i> - total	39 (3.6%)	24 (3.6%)	15 (3.7%)	0.99	118 (11%)	70 (10.5%)	48 (11.9%)	0.5	<0.05
<b>Cognitive</b>									
Irritability	0	0	0		23 (2.1%)	15 (2.2%)	8 (2%)	0.77	<0.05
Concentration disorders	42 (3.9%)	26 (3.9%)	16 (4%)	1	18 (1.7%)	14 (2.1%)	4 (1%)	0.15	<0.05
Memory impairment	7 (0.7%)	2 (0.3%)	5 (1.2%)	0.07	30 (2.8%)	22 (3.3%)	8 (2%)	0.17	<0.05
<i>n</i> - total	49 (4.6%)	28 (4.2%)	21(5.2%)	0.48	48(4.5%)	36(5.4%)	12(3%)	<0.03	0.91
<b>Psychiatric</b>									
Depression	10 (0.9%)	5 (0.7%)	5 (1.2%)	0.43	11 (1%)	6 (0.9%)	5 (1.2%)	0.61	0.82
Anxiety	11 (1%)	5 (0.7%)	6 (1.5%)	0.25	5 (0.5%)	3 (0.4%)	2 (0.5%)	0.93	0.13
Psychotic symptoms	13 (1.2%)	7 (1%)	6 (1.5%)	0.54	1 (0.1%)	0 (0%)	1 (0.2%)		<0.05
Psychoorganic symptoms	2 (0.2%)	2 (0.3%)	0 (0%)		2 (0.2%)	2 (0.3%)	0 (0%)		1
<i>n</i> - total	31 (2.9%)	17(2.5%)	14(3.5%)	0.41	16(1.5%)	10(0.9%)	6(1.5%)	0.93	<0.05
<b>Neurological</b>									
Upper limbs paresis	34 (3.2%)	21 (3.1%)	13 (3.2%)	0.99	22 (2.1%)	14 (2.1%)	8 (2%)	0.88	0.1
Lower limbs paresis	22 (2.1%)	15 (2.2%)	7 (1.7%)	0.53	10 (0.9%)	6 (0.9%)	4 (1%)	0.9	<0.05
Sensation disorders	14 (1.3%)	7 (1%)	7 (1.7%)	0.34	6 (0.6%)	3 (0.4%)	3 (0.7%)	0.54	0.07
Cranial nerves paresis	23 (2.1%)	11 (1.6%)	12 (3%)	0.14	13 (1.2%)	5 (0.7%)	8 (2%)	0.07	0.1
Cerebellar syndrome	64 (6%)	41 (6.1%)	23 (5.7%)	0.68	13 (1.2%)	9 (1.3%)	4 (1%)	0.58	<0.05
<i>n</i> - total	101 (9.4%)	60 (9%)	41 (10.1%)	0.57	47 (4.4%)	31 (4.6%)	16 (4%)	0.49	<0.05

\*Comparison between males and females.

\*\*Comparison of the overall number of symptoms at the moment of discharge and during the follow-up.

### Comparison of clinical results between the analysed groups

Patients with sequelae were significantly older than patients with no sequelae (Table 2). Sequelae were most prevalent in patients aged 31–60 years old (Table 5).

Statistical analysis showed no difference in the prevalence of all complications between males and females (Table 4).

Subjective sequelae reported during the follow-up after 1 month post-hospitalisation were more frequent than subjective

**Table 4.** Demographic analysis of patients with/without sequelae

	<i>n</i>	Age (years)	Female	Male	City	Village
Overall	1072	44.1 ± 16.1	404	668	606	466
No sequelae	851	43.3 ± 16.6	329	522	482	369
Sequelae	221	47 ± 14.4	75	146	124	97
<i>P</i> , sequelae vs. no sequelae		<0.05	0.87	0.87	0.95	0.95

complaints during the hospitalisation (118 patients vs. 39 patients  $P < 0.001$ ), while objective neurological symptoms during the hospitalisation were more frequent than neurological sequelae (101 patients vs. 47 patients  $P < 0.001$ ) (Table 3). No significant differences between psychiatric symptoms during hospitalisation and sequelae were observed (70 patients vs. 56 patients  $P = 0.15$ ).

There were no significant differences in sequelae between the patients with biphasic and monophasic courses of the disease.

#### Comparison of laboratory test results between the analysed groups

The mean pleocytosis and protein concentration in CSF in the sequelae group were  $114.85 \pm 136.49$  cells/ $\mu$ l and  $71.45 \pm 30.16$  mg/dl while in the non-sequelae group –  $109.44 \pm 109.29$  cells/ $\mu$ l and  $65.41 \pm 24.8$  mg/dl (difference in protein concentration was statistically significant,  $P < 0.05$ ).

The mean pleocytosis and protein concentration in CSF in patients with neurological sequelae were  $178.95 \pm 228.42$  cells/ $\mu$ l (normal  $<5$  cells/ $\mu$ l) and  $76.67 \pm 29.62$  mg/dl (normal  $<45$  mg/dl) while in the rest of the patients –  $107.77 \pm 108.24$  cells/ $\mu$ l and  $66.45 \pm 26.09$  mg/dl (difference in protein concentration was statistically significant,  $P < 0.05$ ).

#### Logistic regression, ROC curve and Kaplan–Meier curve analysis results

Patients' age and protein concentration in CSF were independent risk factors of the sequelae development. Logistic regression analysis confirmed that the risk of sequelae was increased in patients with higher protein concentration in CSF ( $r = 8.9$ ;  $P = 0.002$ ) and in older patients ( $r = 8.2$ ;  $P = 0.004$ ).

Logistic regression analysis showed that the risk of neurological complications persistence was increased in patients with higher protein concentration in CSF ( $r = 5.8$ ;  $P = 0.01$ ).

Additionally, ROC curve analysis showed that protein concentration in CSF differentiated patients with neurological sequelae and patients without neurological sequelae (AUC = 0.607 at cut-off 83.8 mg/dl; the sensitivity was 41.46% and specificity was 80.37%) (Fig. 1).

The risk of fatal outcome or hospitalisation in ICU was assessed by Kaplan–Meier curves in all patients (Fig. 2). Additionally, patients with milder course of the disease (M and ME) and more severe course of the disease (MEM) were compared. Risk of unfavourable outcome of the disease was significantly higher in MEM patients ( $P < 0.001$ ) (Fig. 3).

#### Discussion

There are many reports concerning the acute phase of TBE, yet only a few presented long-term outcomes of the disease. So called

post-encephalitic TBE syndrome was described in 35–58% of the patients. It may result in long-term morbidity that often affects patient's quality of life and forces a change in lifestyle. The most commonly reported symptoms were cognitive or neuropsychiatric complaints (reduced stress tolerance and impaired ability to memorise), balance disorders, headache, dysphasia, hearing defects and limb paresis [7, 11–14]. The results of our research indicate that 1 month after discharge from hospital 20.6% of patients with TBE suffered from various sequelae. This is less than it was reported in other studies. Kaiser [11] observed sequelae in 27% patients. Mickiene *et al.* [15] described sequelae in 77 out of 250 patients 12 weeks after the onset of the disease – 49 (63.6%) had only neuropsychiatric and cognitive complaints, whereas the remaining patients had objective neurological signs. Also Veje *et al.* [16] reported that patients with a history of TBE scored significantly lower than controls in the dimensions of memory/learning, executive functions, vigilance and physical impairments when a standardised questionnaire, the ESGQ 2000, specifically designed for sequelae after encephalitis was used.

One of the reasons for the difference between our results and those reported by other researchers is the distribution of clinical forms of TBE. In our study, M was the dominant form of the disease, while in other studies moderate and severe forms (ME and MEM) were more frequent. This obviously increased the rate of sequelae.

The other reason would be the relatively strict criteria we used in defining the sequelae (we excluded symptoms that were mild and did not affect patient's life), which prioritised neurological rather than cognitive sequelae. Upon comparison of the number of cognitive sequelae in our study and other reports, it seems that this problem might be underrepresented in our report.

The frequency of sequelae differed depending on the clinical form of TBE. The patients with ME more often developed subjective complications, while the patients with MEM suffered from neurological sequelae. The probability of unfavourable outcome (death or need for an intensive care treatment) was also significantly higher in the MEM group. This remains in accordance with the results reported by Lenhard *et al.* [17].

The neurological symptoms prevailed on discharge, while subjective symptoms dominated during the follow-up. The TBE virus usually affects cerebellum, thalamus and caudate nucleus [11, 18]. In our previous study, ataxia was a dominant neurological symptom during the acute phase of TBE and was present in 14.1% of patients [6]. In this study, ataxia was also the most frequent early complication of TBE (6%). However, it was persistent only in 1.2% of patients. The most of the sequelae were mild, although influencing the quality of life, subjective symptoms such as headache or vertigo. In some patients these symptoms were present even 10 years after the acute phase of the disease (they reported it during the later follow-up). It is hard to explain why the subjective symptoms were more common during the follow-up than on discharge. No pathophysiological mechanism has been

**Table 5.** Comparison of sequelae prevalence with regard to the patients' age groups

Age group	At the moment of discharge								After 1 month							
	Subjective (n)	%	Cognitive (n)	%	Psychiatric (n)	%	Neurological (n)	%	Subjective (n)	%	Cognitive (n)	%	Psychiatric (n)	%	Neurologic (n)	%
18–30 years, n = 259	6	2.3	9	3.5	3	1.2	15	5.8	18	6.9	7	2.7	3	1.2	6	2.3
31–60 years, n = 623	27	4.3	33	5.3	23	3.7	67	10.8	83	13.3	33	5.3	11	1.8	34	5.5
>60 years, n = 190	6	3.2	7	3.7	5	2.6	19	10.0	17	8.9	8	4.2	2	1.1	7	3.7
<i>P</i>	0.96		0.8		0.58		0.74		0.61		0.96		0.87		0.72	
	18–30 years old				%				31–60 years old				%			
At the moment of discharge <i>n</i> (%)																
Headache			2		0.8		9		1.4		1		0.5			
Vertigo			2		0.8		3		0.5		2		1.1			
Sleep disorders			3		1.2		16		2.6		3		1.6			
Concentration disorders			9		3.5		27		4.3		6		3.2			
Memory impairment			0		0.0		6		1.0		1		0.5			
Depression			0		0.0		8		1.3		2		1.1			
Anxiety			3		1.2		6		1.0		2		1.1			
Psychotic			0		0.0		11		1.8		2		1.1			
Psychoorganic			0		0.0		1		0.2		1		0.5			
Upper limbs paresis			3		1.2		24		3.9		7		3.7			
Lower limbs paresis			4		1.5		12		1.9		6		3.2			
Sensory disorders			3		1.2		10		1.6		1		0.5			
Cranial nerves paresis			5		1.95		15		2.4		3		1.6			
Ataxia			11		4.2		43		6.9		10		5.3			
After 1 month, <i>n</i> (%)																
Headache			15		5.8		72		11.6		14		7.4			
Vertigo			4		1.5		21		3.4		4		2.1			
Sleep disorders			1		0.4		8		1.3		1		0.5			
Concentration disorders			0		0.0		15		2.4		3		1.6			
Memory impairment			4		1.5		20		3.2		6		3.2			
Depression			1		0.4		9		1.4		1		0.5			
Anxiety			2		0.8		2		0.3		1		0.5			

(Continued)

Table 5. (Continued.)

	18-30 years old	31-60 years old	>60 years old	%	%
Psychotic	0	1	0	0.2	0.0
Psychoorganic	0	2	0	0.3	0.0
Upper limbs paresis	2	17	3	2.7	1.6
Lower limbs paresis	2	6	2	1.0	1.1
Sensory disorders	0	5	1	0.8	0.5
Cranial nerves paresis	4	8	1	1.3	0.5
Ataxia	1	10	2	1.6	1.1
Chronic fatigue	6	32	9	5.1	4.7
Mood disorders	4	17	2	2.7	1.1

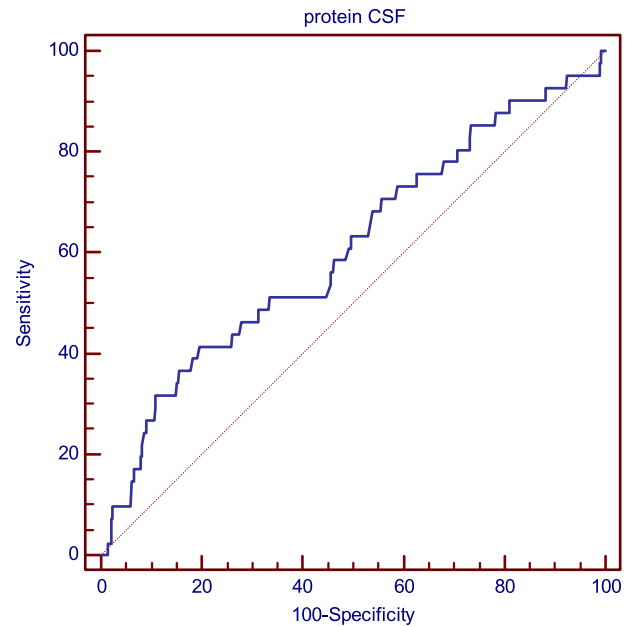


Fig. 1. Analysis of the relationship of CSF protein concentration and probability of late neurological sequelae occurrence using the ROC curves.

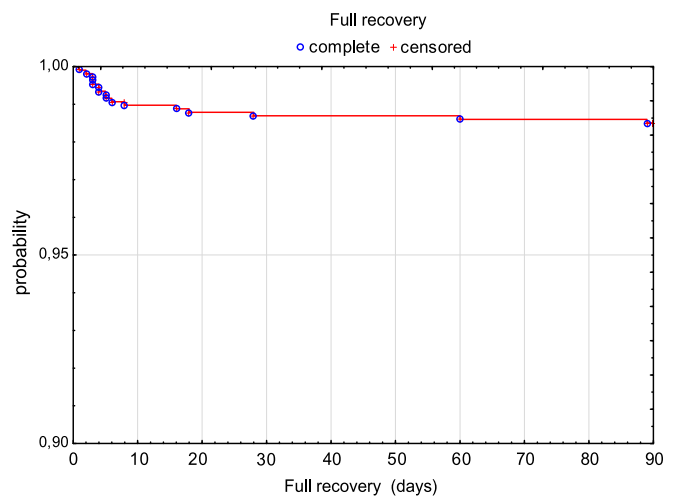


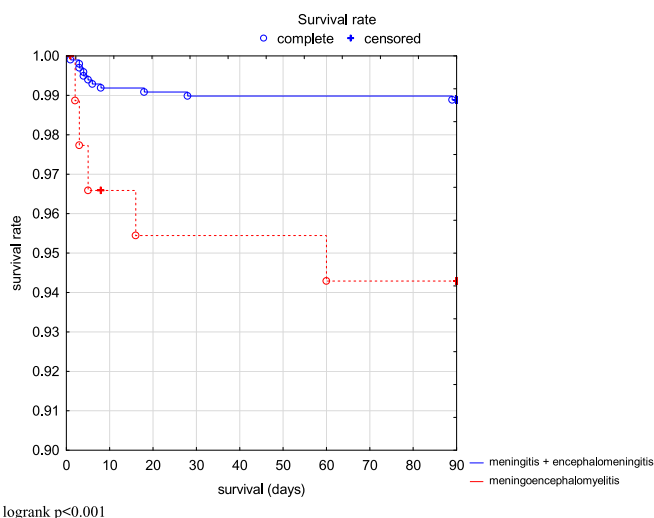
Fig. 2. Survival rate (3 months without death or need for ICU treatment) in TBE patients.

reported for the cognitive symptoms and these sequelae cannot be explained purely by the affinity of the virus to specific parts of the brain as in the case of neurological sequelae.

Age and protein concentration in CSF were the independent risk factors predisposing to sequelae development. Statistical analysis confirmed that the CSF protein concentration was the independent risk factor for the persistence of neurological symptoms.

The risk of late neurological complication persistence was increased in patients with higher protein concentration in CSF. This is similar to Kaiser [11], who reported that patients with persistent sequelae presented with higher protein concentration in CSF than the rest of TBE patients. The protein concentration in acute neuroinfection may be elevated due to: blood brain





**Fig. 3.** Comparison of survival rate (3 months without death or ICU treatment) in TBE patients depending on the clinical form.

barrier (BBB) dysfunction, abnormal CSF flow and impairment of protein absorption, increased intrathecal immunoglobulin production and elevation of acute inflammatory mediators including cytokines [19]. Grygorczuk *et al.* [20] indicates that the increase of albumin quotient and protein concentration in TBE patients suggests that increased BBB permeability is an important pathogenetic mechanism of TBE, but its dynamics is suggestive rather of a protracted BBB impairment during CNS inflammation and healing than of an early disruption preceding neuroinvasion. In the mouse TBE model described by Růžek *et al.* [21], the BBB dysfunction does not occur during systemic infection, but only after the establishment of encephalitis, simultaneously with the up-regulated intrathecal TNF $\alpha$  and IL-6 synthesis. Such course of events does not contradict the pathogenetic role of BBB permeability, but postpones it to the later, neurological phase of the disease.

Czupryna *et al.* reported that in TBE patients with paresis, albumin quotient on admission was higher than in the rest of the group. This is consistent with the role of an early BBB impairment in the neuropathology and hints for a possibility of specific pathogenesis of particular neurological complications [18].

As the treatment of TBE is only symptomatic, the only way to prevent sequelae development is to avoid the infection. The best example of vaccine effectiveness is Austria with its mandatory vaccinations and the number of annual TBE cases dropping from 300–700 to 50–100 [22].

The vaccination against TBE was introduced in Poland over 20 years ago. Since then it has been mandatory for forestry workers, which resulted in a great significant decrease in TBE incidence among this group. The most at-risk populations are farmers and people who frequently visit forests (mushroom or berry picking and leisure activity). The vaccination coverage in this group is very low due to the unawareness of the disease or high cost of the vaccine [6, 23]. Despite TBE being endemic in some regions of Poland, only 0.34% of the population was vaccinated between 1999 and 2007 [24, 25].

The limitation of our study is its retrospective character. Some information relevant to the study may have not been recorded in the medical files. The retrospective character of our study may be the reason for underrepresentation of cognitive symptoms. It

seems that in prospective studies concentrating on cognitive symptoms with the usage of specialised questionnaires the frequency of these sequelae is higher than in our study. Therefore, those reports may be superior in this field.

In conclusion, it appears very disappointing that although the vaccine is theoretically available for Polish population, TBE still remains a serious clinical and epidemiological problem, with long-lasting complications, which has not changed over the past few years. We observe that there is a necessity for a better vaccination program, which would effectively prevent the sequelae development.

## Conclusions

- (1) Although TBE seems to be a mild and preventable disease, serious complications may occur, with the sequelae affecting 20.6% of TBE patients. Neurological symptoms, such as upper limbs paresis, lower limbs paresis, sensation disorders, cranial nerves paresis and cerebellar syndrome are the most common group of early clinical signs, while subjective symptoms, such as headache, vertigo, sleep disorder and fatigue are the most common sequelae. Patients with MEM are predisposed to neurological complications, while subjective symptoms are more common in ME.
- (2) Age and protein concentration in CSF were independent risk factors for sequelae development. The risk of late neurological complication persistence was increased in patients with higher protein concentration in CSF.
- (3) There is a need for better vaccination program, which would effectively prevent the TBE sequelae development.

## References

1. Bogovic P and Strle F (2015) Tick-borne encephalitis: a review of epidemiology, clinical characteristics, and management. *World Journal of Clinical Cases* 3, 430–441.
2. Lindquist L and Vapalahti O (2008) Tick-borne encephalitis. *Lancet* 371, 1861–1871.
3. <http://ecdc.europa.eu/> (accessed 22 October 2017).
4. Pancewicz SA *et al.* (2015) Polish society of epidemiology and infectious diseases. Diagnosis and treatment of tick-borne diseases recommendations of the polish society of epidemiology and infectious diseases. *Przegląd Epidemiologiczny* 69, 309–316, 421–8.
5. <http://www.pzh.gov.pl> (accessed 22 July 2017).
6. Czupryna P *et al.* (2016) Influence of climatic, demographic and socioeconomic factors on tick-borne encephalitis incidence in 6 counties of Podlaskie region in 1994–2014. *Przegląd Epidemiologiczny* 70, 21–25.
7. Kaiser R (2008) Tick-borne encephalitis. *Infectious Diseases Clinics of North America* 22, 561–575.
8. Valarcher JF *et al.* (2015) Tick-borne encephalitis. *Revue Scientifique et Technique* 34, 453–466.
9. Zajkowska J *et al.* (2011) Fatal outcome of tick-borne encephalitis – a case series. *Polish Journal of Neurology and Neurosurgery* 45, 402–406.
10. European Commission. Commission implementing decision (2012/506/EU) of 8 August 2012 amending Decision 2002/253/EC laying down case definitions for reporting communicable diseases to the Community network under Decision No 2119/98/EC of the European Parliament and of the Council. Official Journal of the European Union. Luxembourg: Publications Office of the European Union. 27.9.2012. Available at <http://eur-lex.europa.eu/LexUriServ/LexUriServ.do?uri=OJ:L:2012:262:0001:0057:EN:PDF>.
11. Kaiser R (1999) The clinical and epidemiological profile of tick-borne encephalitis in southern Germany 1994–98: a prospective study of 656 patients. *Brain* 122, 2067–2078.

12. **Haglund M and Gunther G.** (2003) Tick-borne encephalitis–pathogenesis, clinical course and long-term follow-up. *Vaccine* **21**(Suppl. 1), S11–S18.
13. **Karelis G *et al.*** (2012) Tick-borne encephalitis in Latvia 1973–2009: epidemiology, clinical features and sequelae. *European Journal of Neurology* **19**, 62–68.
14. **Laursen K and Knudsen JD** (2003) Tick-borne encephalitis: a retrospective study of clinical cases in Bornholm, Denmark. *Scandinavian Journal of Infectious Diseases* **35**, 354–357.
15. **Mickiene A *et al.*** (2002) Tick-borne encephalitis in an area of high endemicity in Lithuania: disease severity and long-term prognosis. *Clinical Infectious Diseases* **35**, 650–658.
16. **Veje M *et al.*** (2016) Tick-borne encephalitis sequelae at long-term follow-up: a self-reported case-control study. *Acta Neurologica Scandinavica* **134**, 434–441.
17. **Lenhard T *et al.*** (2016) Predictors, neuroimaging characteristics and long-term outcome of severe European tick-borne encephalitis: a prospective cohort study. *PLoS ONE* **11**, e0154143.
18. **Czupryna P *et al.*** (2011) Tick-borne encephalitis in Poland in years 1993–2008–epidemiology and clinical presentation. A retrospective study of 687 patients. *European Journal of Neurology* **18**, 673–679.
19. **Blakeley J and Irani DN** (2009) Approach to patient with abnormal cerebrospinal fluid protein Content. In Irani DN (ed.) *Cerebrospinal Fluid in Clinical Practice*, vol. **32**. Elsevier, Saunders, p. 290.
20. **Grygorczuk S *et al.*** (2017) The increased concentration of macrophage migration inhibitory factor in serum and cerebrospinal fluid of patients with tick-borne encephalitis. *Journal of Neuroinflammation* **14**, 126.
21. **Růžek D *et al.*** (2011) Breakdown of the blood-brain barrier during tick-borne encephalitis in mice is not dependent on CD8+ T-cells. *PLoS ONE* **6**, e20472.
22. **Kunze U and Böhm G** (2015) Tick-borne encephalitis (TBE) and TBE-vaccination in Austria: update 2014. *Wiener Medizinische Wochenschrift* **165**, 290–295.
23. **Godfrey ER and Randolph SE** (2011) Economic downturn results in tick-borne disease upsurge. *Parasites and Vectors* **4**, 35.
24. **Kollaritsch H *et al.*** (2011) The current perspective on tick-borne encephalitis awareness and prevention in six Central and Eastern European countries: report from a meeting of experts convened to discuss TBE in their region. *Vaccine* **29**, 4556–4564.
25. **Zavadska D *et al.*** (2013) Recommendations for tick-borne encephalitis vaccination from the Central European Vaccination Awareness Group (CEVAG). *Human Vaccines and Immunotherapeutics* **9**, 362–374.