

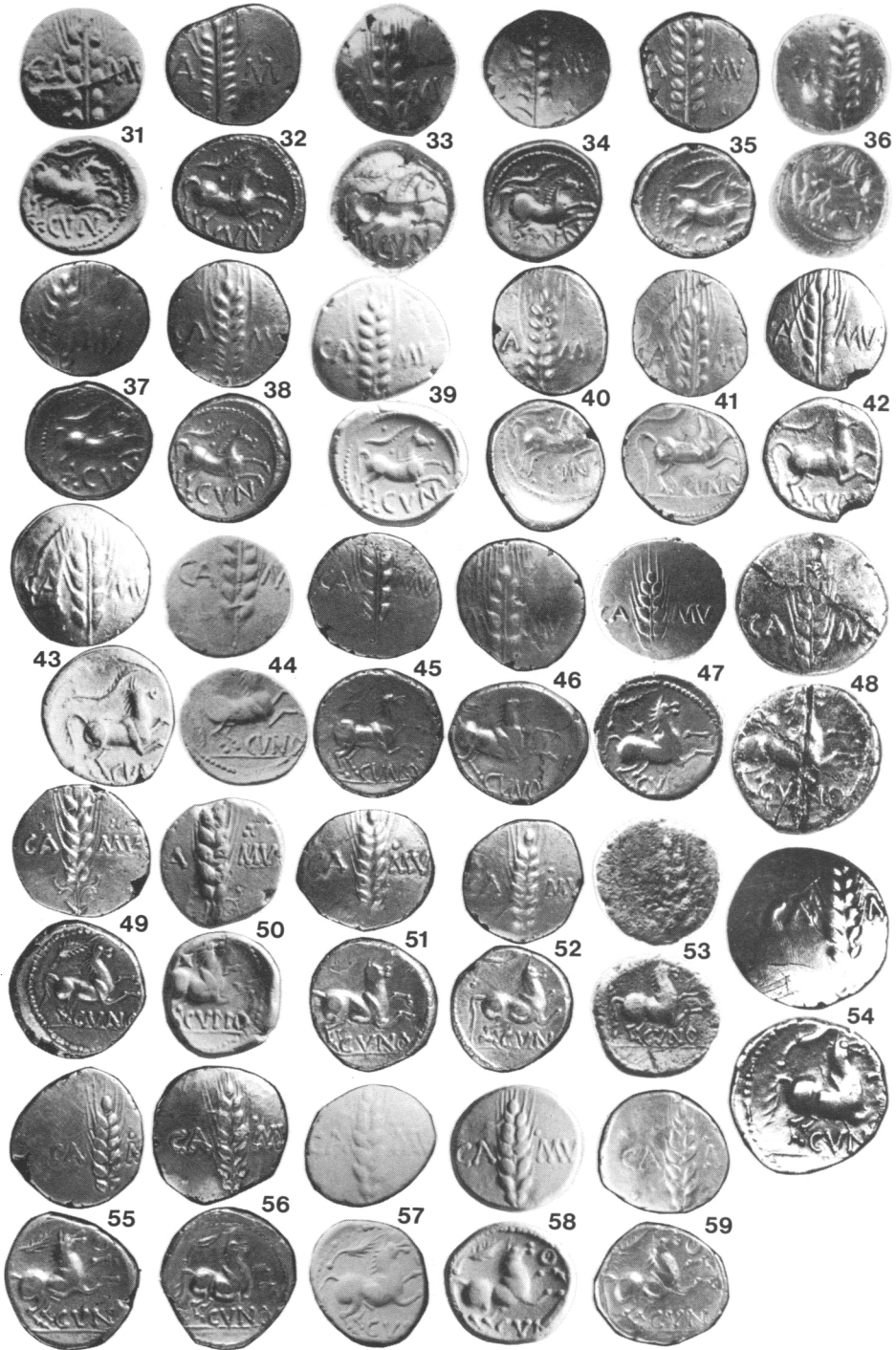
PLATE I



(Photo: R. Wilkins)

COINS OF CUNOBELIN, Nos. 1-30 (Scale 1: 1). See p. 13 for description.

PLATE II



(Photo: R. Wilkins)

COINS OF CUNOBELIN, Nos. 31-59 (Scale 1: 1). See pp. 13f. for description.

PLATE III



(Photo: R. Wilkins)

COINS OF CUNOBELIN, Nos. 60–89 (Scale 1: 1). See pp. 14f. for description.

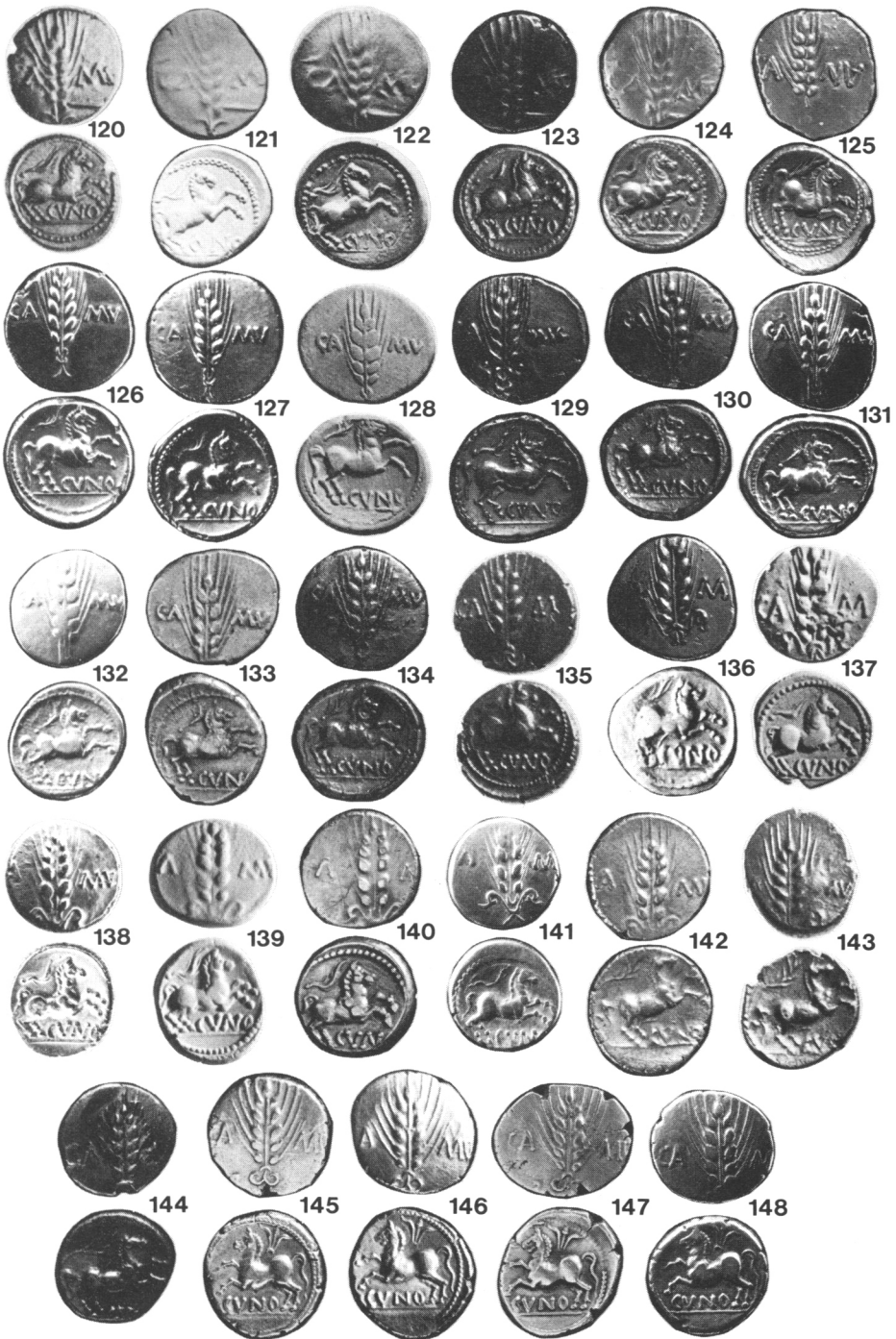
PLATE IV



(Photo: R. Wilkins)

COINS OF CUNOBELIN, Nos. 90-119 (Scale 1: 1). See pp. 15f. for description.

PLATE V



(Photo: R. Wilkins)

COINS OF CUNOBELIN, Nos. 120-148 (Scale 1: 1). See pp. 16 for description.

PLATE VI



(Photo: R. Wilkins)

COINS OF CUNOBELIN, Nos. 149-198 (Scale 1: 1). See pp. 16ff. for description.

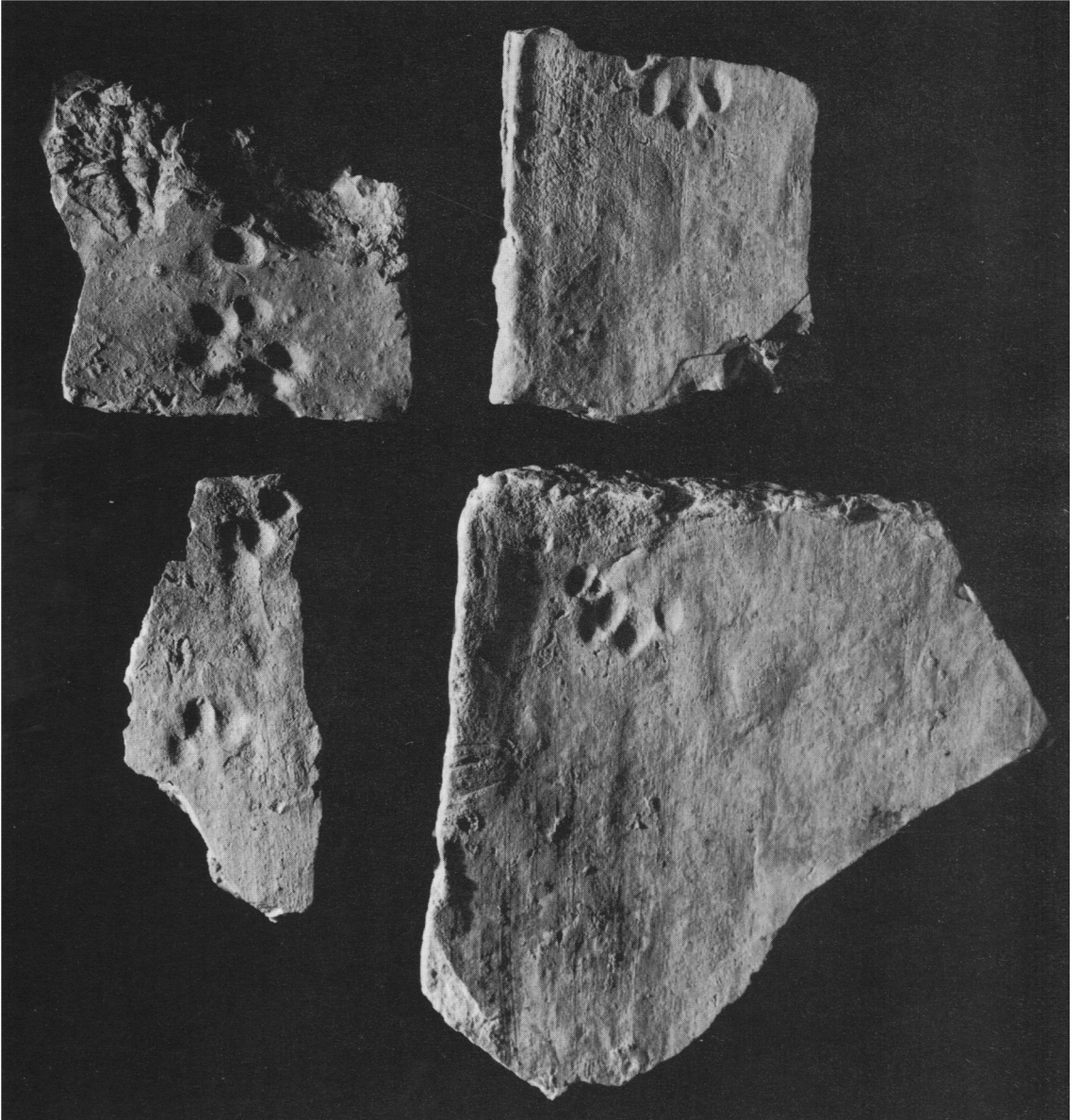
PLATE VII



(Photo: R. Wilkins)

COINS OF CUNOBELIN, Nos. 199-210 and A-D (Scale 1: 1). See pp. 13f., 16ff. for description.

PLATE VIII



(Photo: National Monuments Record of Scotland, copyright reserved)

Bothwellhaugh. Tile-fragments bearing impression of a cat's paw, from the Roman fort (p. 33).
(Scale 1: 2)

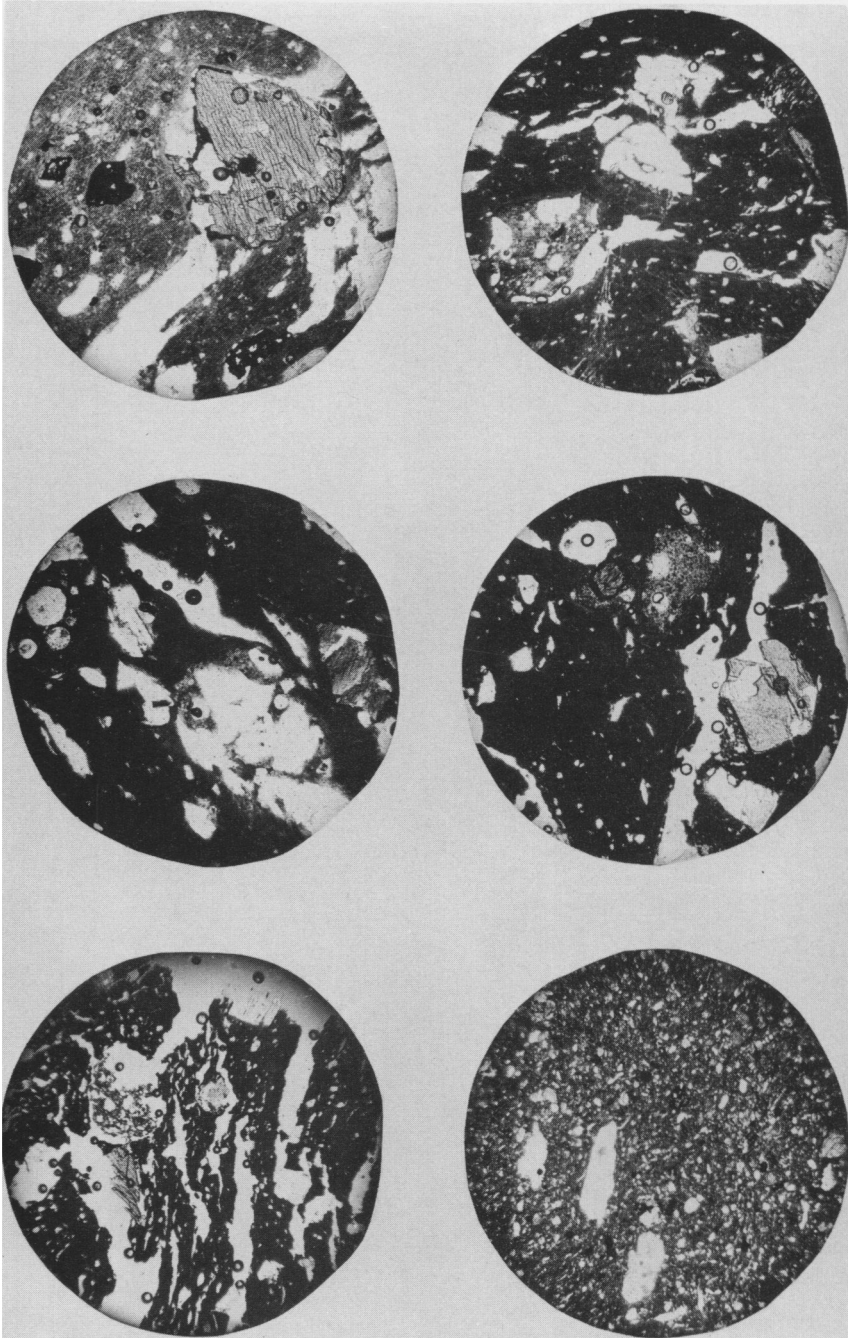
PLATE IX



(Photo: Colchester Museum)

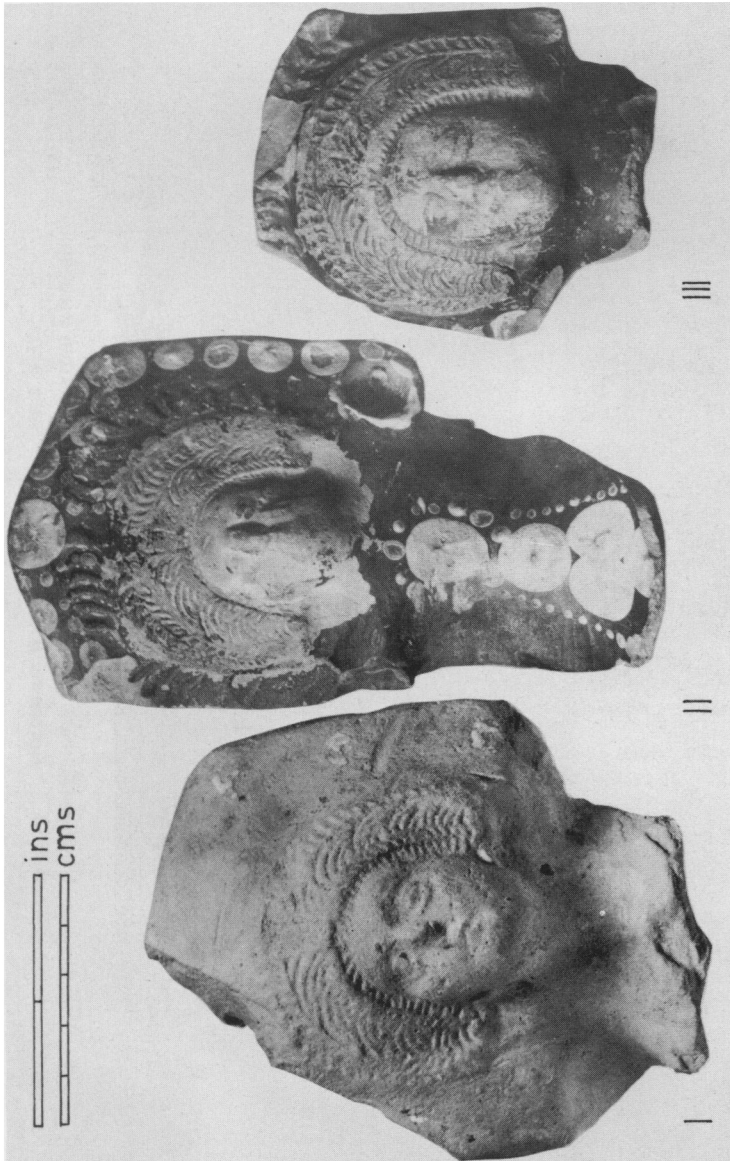
COLCHESTER. Tombstone of the centurian M. Flavonius Facilis (p. 102).
(Scale 1: 9.6)

PLATE X



POTTERY THIN SECTIONS. Thin sections ($\times 40$) of Fabric 1 (Nos. 1-5) and of medieval pottery (No. 6). See p. 171ff.

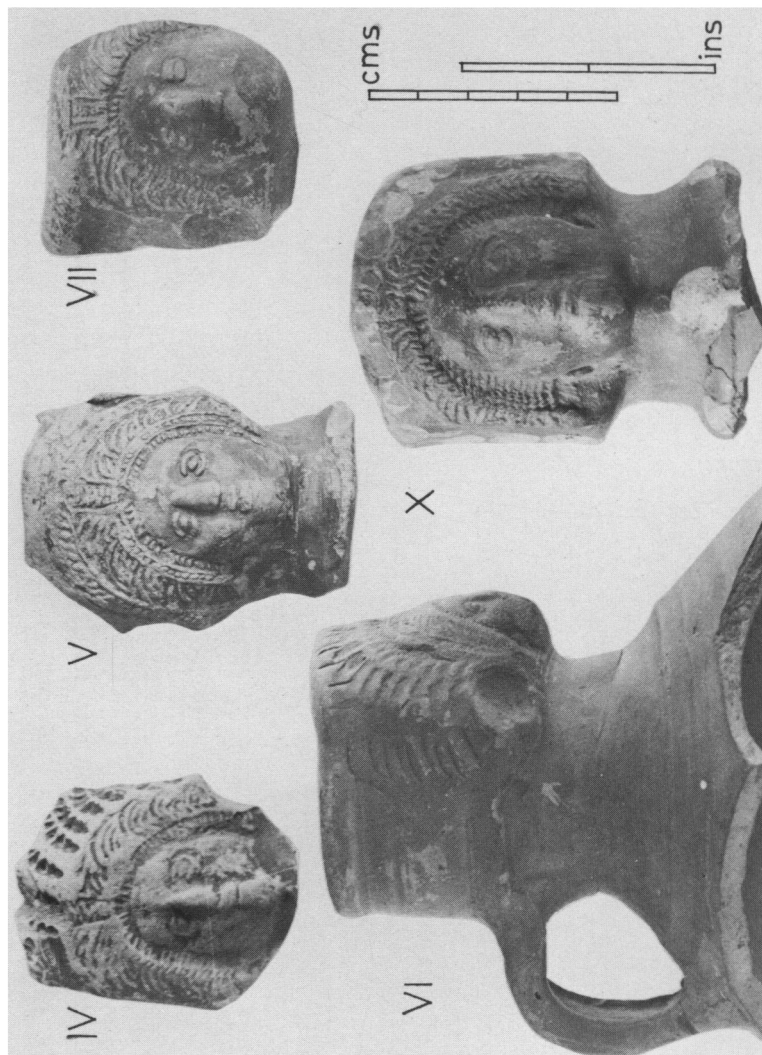
PLATE XI



(Photos: No. I, Institute of Archaeology, London; rest, J. Mumby)

Colour-coated face-flagons: No. I from Toot Baldon, Nos. II-III from London (Guildhall Museum) (pp. 182-88). (Scale 2: 3)

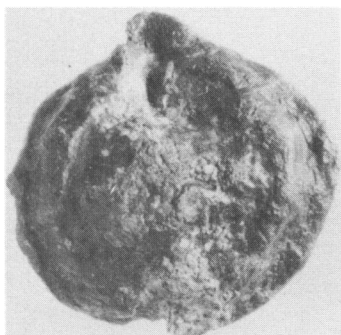
PLATE XII



(Photos: J. Munby)

Colour-coated face-flagons: Nos. iv-v from Lydney; Nos. vi-vii from Richborough; No. x from Dorchester (Oxon) (pp. 182-88). (Scale 2: 3)

PLATE XIII



(Photo: R. L. Wilkins)

A, B. Lead sealing from Kirmington, Lincolnshire (p. 208). (Scale 2: 1)



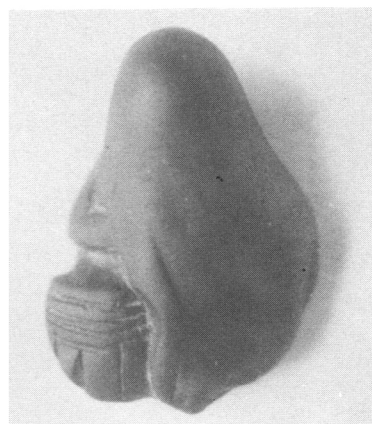
(Photo: National Museum of Wales)

C. Lead sealing from Caernarvon (p. 208). (Scale 2: 1)



(Photo: Reading Museum and Art Gallery)

D. Moulded glass cameo from Silchester (p. 209). (Scale 2: 1)



(Photo: J. Munby)

E, F, G. Jet figure from Levens Park, Westmorland (p. 216). (Scale 1: 1)

PLATE XIV



Bronze candlestick from Branston, Lincs. (pp. 210 ff.). Scale: c. 3 : 4.
A. Candlestick as found. B. After restoration

PLATE XV



(Photo: C. M. Daniels)

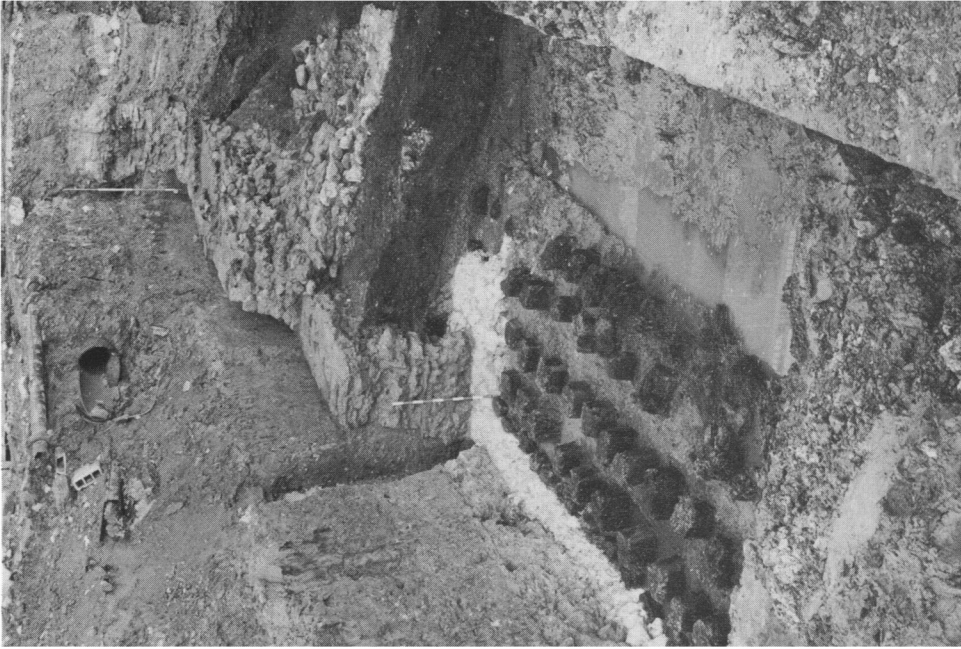
A. Beaufront Red House, Northumberland: foundation-trenches of an open-ended building east of the *fabrica* (p. 230)



(Photo: Josephine Dool)

B. Derby: remains of Kiln 8B at the Racecourse Playing Fields. The kiln furniture is not in its original position (pp. 242–3).

PLATE XVI



(Photo: T. Hurst)

London: a section through the town-wall at Upper Thames St., looking east (p. 265). Note the 5 rows of squared timber piles, with an area of calk footings *in situ*. Above are ragstone footings, with the wall itself of ashlar blocks bonded by tile-courses. Sub-Roman to early medieval black river, deposits are seen on the destroyed south face.



(Photo: T. Ward)

Chester: well-preserved fragment of first-century walling in a centurion's house of the First Cohort, at Crook St., looking north (p. 240).

PLATE XVII



(Photo: T. Hurst)

A. London: a timber-lined water-tank and wooden pipe, pierced at top and bottom; Lower Thames St. (p. 268).



(Photo: C. Shuttleworth)

B. Cirencester, Glos.: mosaic pavement uncovered at the Admiral's Walk (p. 271).

PLATE XVIII



(Photo: D. A. Edwards; copyright Air Photographs Index of the Norfolk Archaeological Unit)

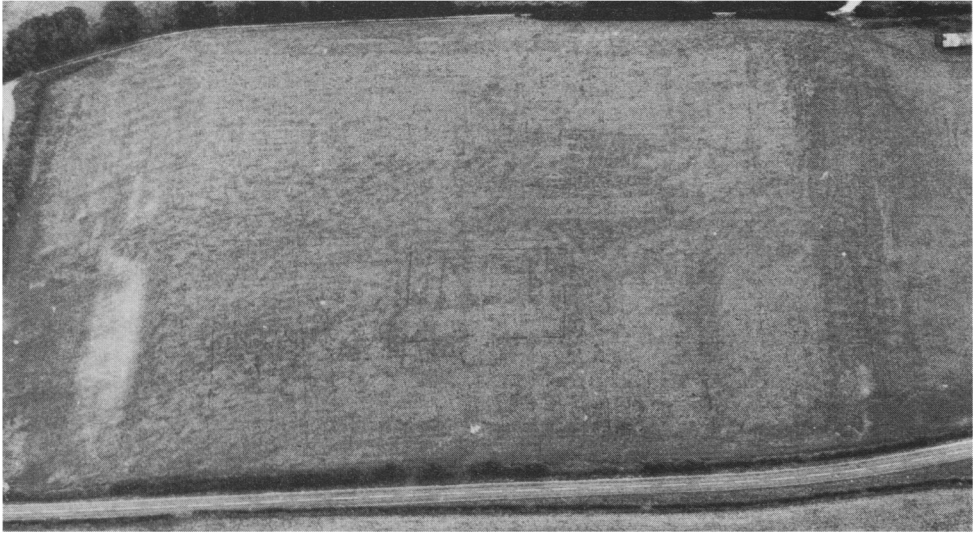
- A.** Brampton, Norfolk: air-photograph showing crop-marks of a polygonal defensive ditch, with a road entering from the south-west (p. 260).



(Photo: D. A. Edwards; copyright Air Photographs Index of the Norfolk Archaeological Unit)

- B.** Horstead, Norfolk: crop-marks of the ditch of a probable Roman camp, looking north-east (p. 261).

PLATE XIX



(Photo: D. A. Edwards; copyright Air Photographs Index of the Norfolk Archaeological Unit)

- A. Brancaster, Norfolk: air-photograph of the Saxon-Shore fort from the south, showing crop-marks of internal buildings including the *principia* (p. 261).



(Photo: D. A. Edwards; copyright Air Photographs Index of the Norfolk Archaeological Unit)

- B. Brancaster, Norfolk: air-photograph of the fort and part of the *vicus*, looking east. Crop-marks outside the east gate reveal building-plots along the frontages of several streets (p. 261).

PLATE XX



(Photo: Carolyn Heighway)

A. Gloucester: remains of the Roman and medieval east gates of the town, looking east (p. 273).



(Photo: Carolyn Heighway)

B. Gloucester: remains of the second-century north gate, looking north-east (p. 273).

PLATE XXI



(Photo: T. Ward)

A. Chester: antefix tile found at Goss St. (pp. 241–2). Scale 1 : 2.



(Photo: C. Shuttleworth)

B. Cirencester, Glos.: sculpture of Mercury found on the site of the west gate at Pheonix Way (p. 273). Scale 1 : 8.



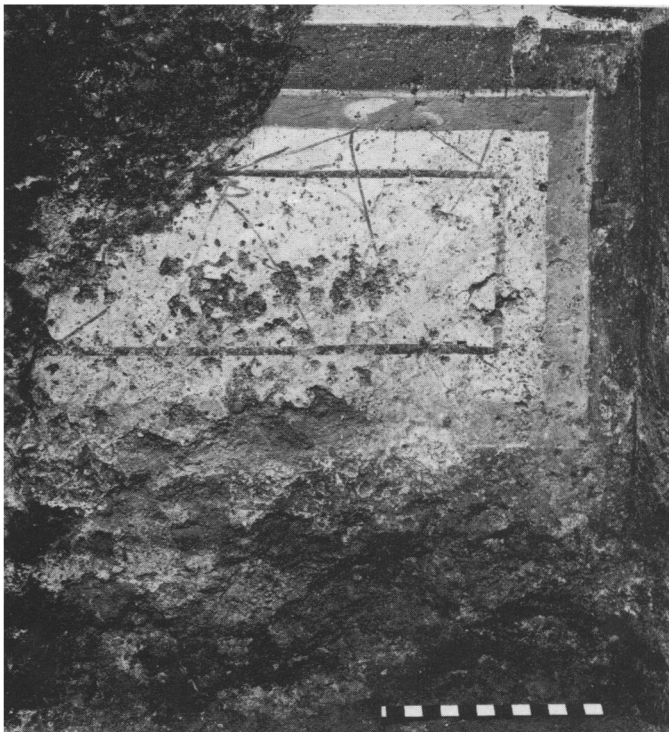
(Photo: C. Shuttleworth)

C. Cirencester, Glos.: intaglio of Roma (p. 273). Scale 1 : 1.



(Photo: G. W. Belton Ltd, by courtesy of the Lincoln City and County Museum)

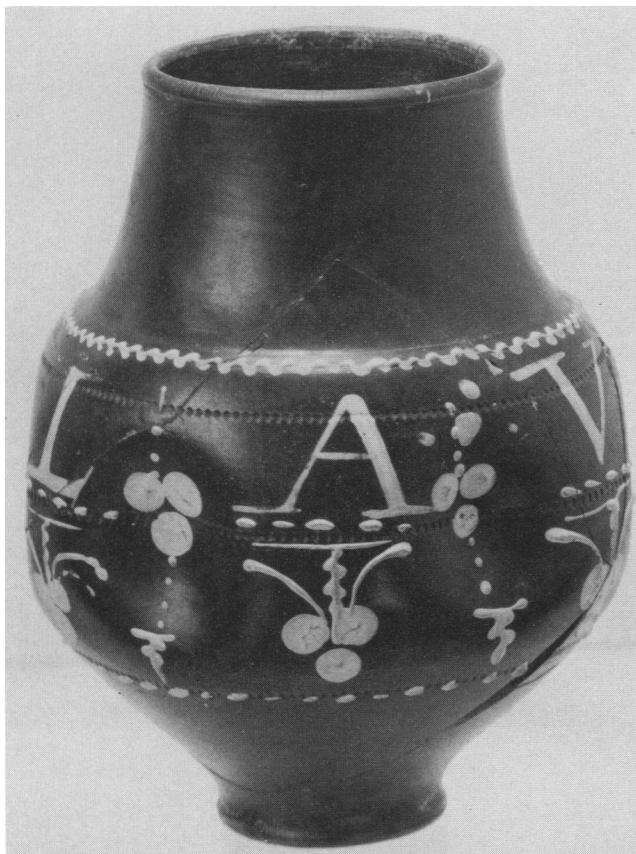
A. Long Bennington, Lincs.: phallic relief (p. 285). Scale 2:7



(Photo: Royal Commission on Historical Monuments: Crown copyright reserved)

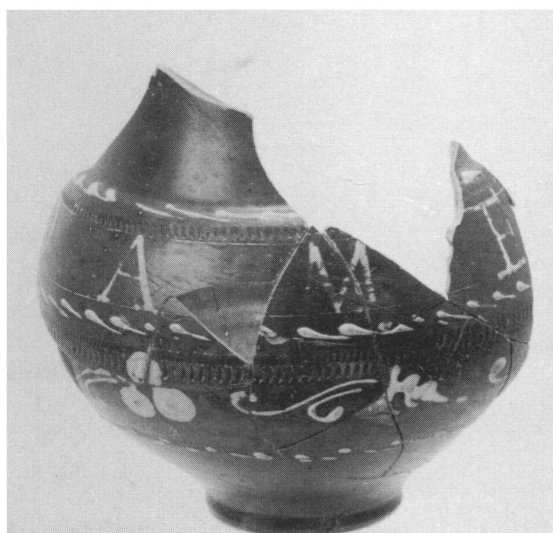
B. York. Dipinto on wall plaster in principia below York Minster (p. 290).

PLATE XXIII



(Photo: G. T. Denford)

A. Beaker from Neatham, Hants. (p. 286). Scale 2 : 3.



(Photo: G. T. Denford)

B. Beaker from Neatham, Hants. (p. 286). Scale 2 : 3.