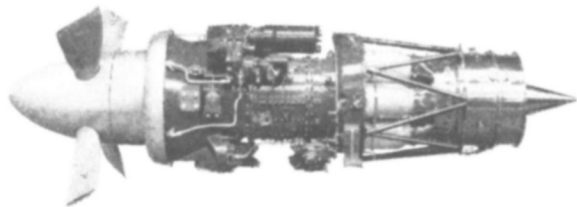


## The FAIREY 'ROTODYNE'

will be powered by two  
Eland propeller turbines

# *Eland*

*designed  
and  
developed by*



# ***NAPIER***

---

D NAPIER AND SON LIMITED · LONDON · W 3

x

*Looking into  
Helicopters?*



*See*

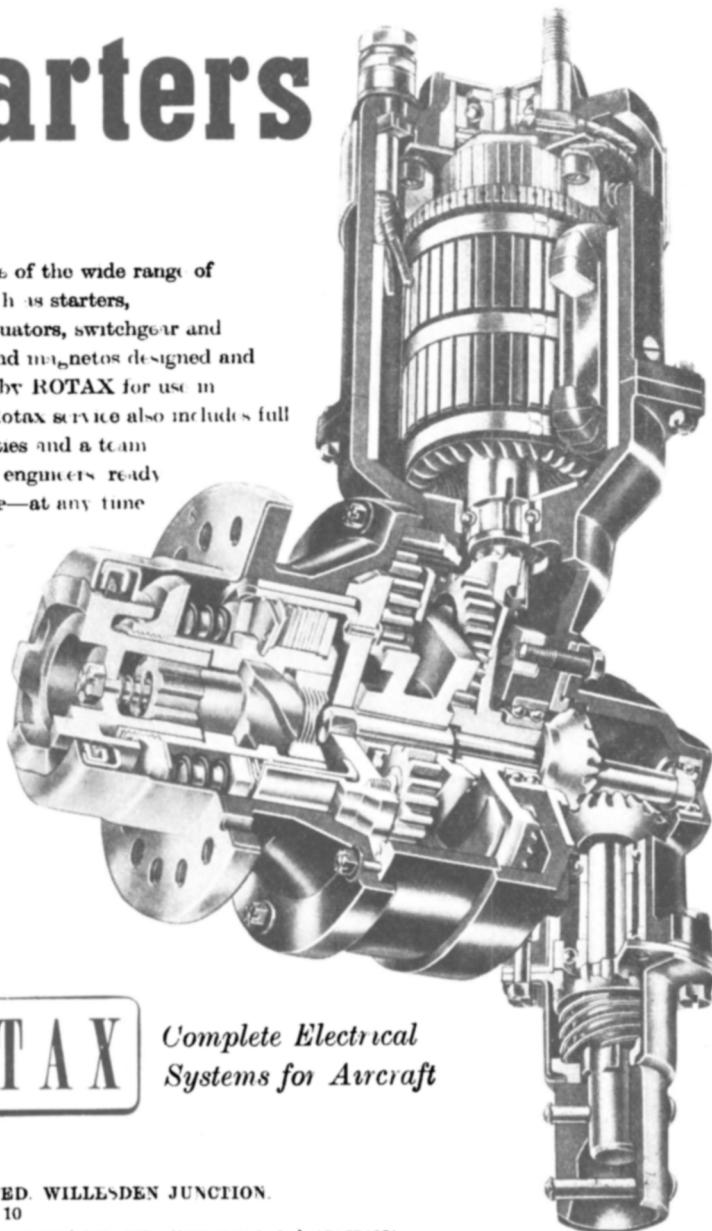
**SAUNDERS-ROE**

SAUNDERS ROE LTD (HELICOPTER DIVISION) EASTLEIGH · SOUTHAMPTON

## EQUIPMENT FOR ROTARY WING AIRCRAFT

# Starters

This unit is one of the wide range of equipment, such as starters, generators, actuators, switchgear and booster coils and magnets designed and manufactured by ROTAX for use in helicopters. Rotax service also includes full advisory facilities and a team of experienced engineers ready to go anywhere—at any time.



**ROTAX**

*Complete Electrical  
Systems for Aircraft*

ROTAX LIMITED, WILLESDEN JUNCTION,  
LONDON N W 10

LUCAS-ROTAX (AUSTRALIA) PTY LTD, MELBOURNE N 3 AUSTRALIA  
LUCAS-ROTAX LTD, SCARBOROUGH, ONTARIO, CANADA



**THE TUNGUM CO , LTD , Brandon House, Painswick Rd , Cheltenham, Glos**

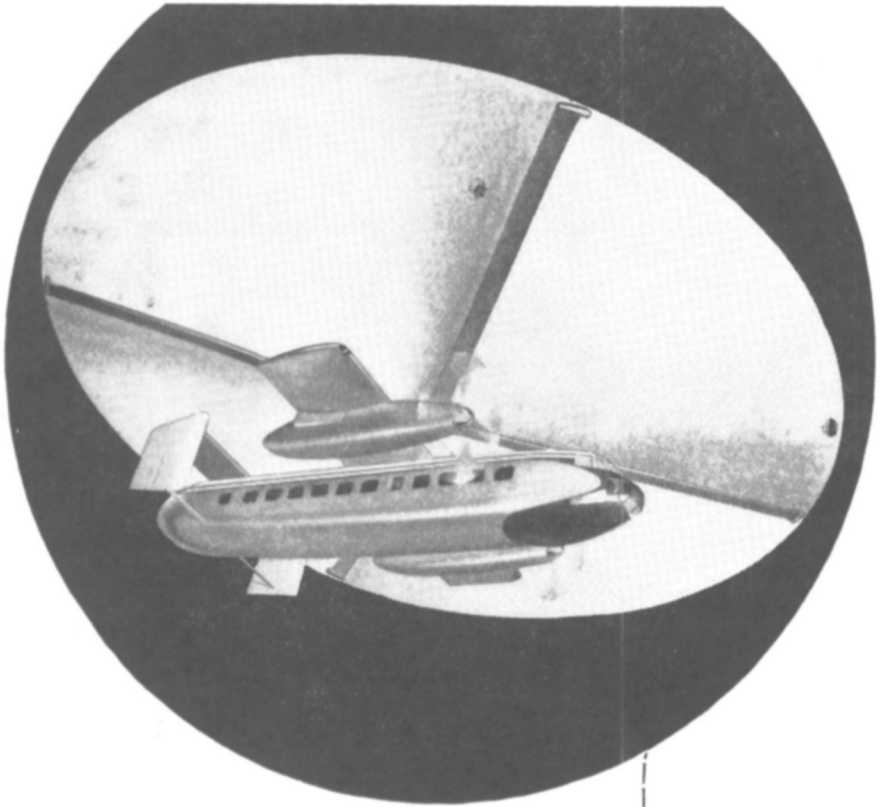
**E. N. V.**

*Designers & Manufacturers  
of*

**Gears for  
Rotor Drives**

of Helicopters have unique facilities for the production of precision spur helical spiral bevel and hypoid gears with profile ground teeth.

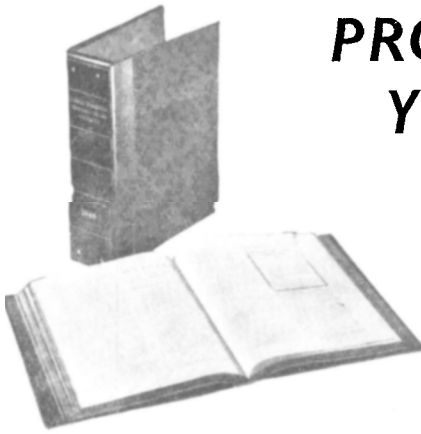
**E N V ENGINEERING  
CO LTD**  
HYTHE ROAD  
WILLESDEN N W 10  
Telephone LADbroke 3622 5



*FAIREY*

**ROTODYNE**

*Under  
Construction  
to Ministry  
of Supply  
Contract*



# PROTECT YOUR JOURNALS

The Binders illustrated, in which the Association's Journals can be readily clipped for preservation and easy reference, are available from the Association's Offices 4, The Sanctuary, Westminster, S W 1

Each Binder will hold eight Journals, covering two Volumes

The price is 13/9d (post free) and this includes the title in gold lettering on the spine

AIRCRAFT MATERIALS LTD



STRUCTURAL MATERIALS and COMPONENTS  
MIDLAND ROAD LONDON N W 1  
Telephone Euston 6151 (7 lines)

SABENA'S NEW TOURIST SERVICES

offer up to  
30% REDUCTIONS

to  
30 DESTINATIONS IN EUROPE



BELGIAN AIRLINES  
Terminal House Grosvenor Gardens S W 1  
Sloane 3439 Also at Manchester and Glasgow

ALVIS LIMITED



HOLYHEAD ROAD COVENTRY  
Telephone Coventry 5501

**Tapered Roller Bearings  
in Helicopters**

*Made in England by*

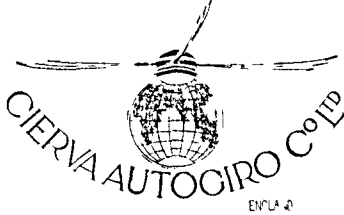
**BRITISH TIMKEN LTD.  
DUSTON, NORTHAMPTON  
and BIRMINGHAM**

UNDERCARRIAGES  
HYDRAULIC SYSTEMS  
FUEL SYSTEMS  
ELECTRICAL COMPONENTS

**Dowty Equipment Ltd.**  
CHELTENHAM

MANUFACTURERS OF  
HELICOPTER BLADES  
AND AIRCRAFT COMPONENTS  
**H MORRIS & Co Ltd**  
Milton Street  
GLASGOW

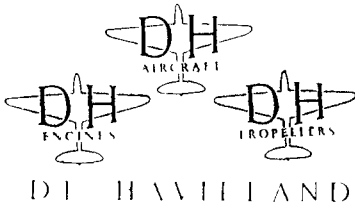
*Pioneers of Rotating Wing Aircraft*



*Bristol*

**TYPE 171 HELICOPTER**

THE BRISTOL AEROPLANE CO LTD ENGLAND



**MESSIER  
HELICOPTER  
LANDING GEAR**

BRITISH MESSIER LTD  
CHELTENHAM RD EAST GLOUCESTER  
**JAMES BOOTH & COMPANY LIMITED**

**ELECTRO HYDRAULICS LIMITED**



Undercarriages  
Hydraulic  
Electro Hydraulic and  
Pneumatic Equipment

LIVERPOOL ROAD  
WARRINGTON  
Telephone Warrington 2244

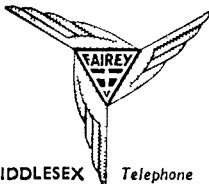
**DURALUMIN**

The Strong Light Aluminium Alloy



ARGYLE STREET WORKS BIRMINGHAM 7

THE FAIREY AVIATION COMPANY LTD  
**ROTARY WING AIRCRAFT**



HAYES MIDDLESEX Telephone Hayes 1800



*Hordern-Richmond Ltd*  
MANUFACTURERS OF  
**Helicopter Rotor Blades**

HYDULIGNUMWORKS HADDENHAM BUCKS  
TELEPHONE AYLESBURY 1100 1102



**KELVIN & HUGHES (AVIATION) LTD**



NEW NORTH ROAD BARKINGSIDE ESSEX  
TEL HAINAULT 2601  
WINCHESTER ROAD BASINGSTOKE HANTS  
TEL BASINGSTOKE 690

**SELF PRIMING PUMP AND  
ENGINEERING CO LTD**



SLOUGH BUCKS Tel SLOUGH 23277

**MOLLART ENGINEERING CO, LTD**



KINGSTON BY PASS SURBITON SURREY  
Telephone Elmbridge 3352 3 4-5  
A M Gauge Test House Authority No 89755/31



**Symbols of service to  
Aviation  
throughout the years**



**PERCIVAL AIRCRAFT LTD**



*A HUNTING GROUP COMPANY*  
LUTON AIRPORT, BEDFORDSHIRE,  
ENGLAND

**THE SPERRY GYROSCOPE CO  
LTD**



**SMITHS**

SMITHS AIRCRAFT INSTRUMENTS LTD

**STANDARD TELEPHONES & CABLES  
LIMITED**

**Standard  
Radio**

NEW SOUTHGATE LONDON N11  
Telephone Enterprise 1234

**ROLLS-ROYCE LTD**



**AERO ENGINES**  
DERBY Telephone Derby 2424



**WESTLAND  
S 55 & S 51 HELICOPTERS**

WESTLAND AIRCRAFT LTD AYOUE ENGLAND



A page from  
 THE ESSO HISTOIRE  
 OF  
 AERIAL LOCOMOTION  
 Adapted from the French de  
 P Crochet Damas Illus  
 trated par Philippe Fetv avec  
 permission



### LEONARDO DA VINCI'S FLYING MACHINE

It took man three centuries to rediscover after Leonardo da Vinci the principles of the screw the parachute the submarine the motor car and the tornado. It would take a little longer to explain some of the other fantastic devices with which the great Renaissance engineer artist and boffin filled his copybooks. Cramped with scribbled notes and mysterious sketches they contain diagrams of gliders flapping wings gremlins and helicopters with great helical screws. Leonardo was the first to study the flight of birds with a view

to mechanical imitation. Simultaneously he was painting a lady called Mona Lisa whose long suffering smile may well have been due to the artist's habit of flinging down his palette and dashing to the window to observe the behaviour of sparrows wings under load.

His parachute another novelty was a stiffened linen tent underslung with leather and cords. Records suggest that it didn't handle any too well and it is impossible to tell from Mona Lisa's expression whether she hoped it would open or not.

*Today genius gets results by remembering that it pays to say*



AVIATION FUELS & LUBRICANTS

ESSO PETROLEUM COMPANY LIMITED 36 QUEEN ANNES GATE LONDON SW1

MADE IN ENGLAND

# TIMKEN

## TAPERED-ROLLER BEARINGS IN HELICOPTERS

*Illustration by courtesy of  
The Bristol Aeroplane Company Limited*

**BRITISH TIMKEN LTD.**

DUSTON, NORTHAMPTON; & BIRMINGHAM

REGD TRADE MARK TIMKEN

