

VOL. XCII, NO. 386

JANUARY, 1946

THE JOURNAL OF MENTAL SCIENCE

(THE BRITISH JOURNAL OF PSYCHIATRY)



BY AUTHORITY OF
THE ROYAL MEDICO-PSYCHOLOGICAL ASSOCIATION

EDITOR-IN-CHIEF
G. W. T. H. FLEMING

ASSOCIATE EDITORS
Alexander Walk and P. K. McCowan

AND WITH THE ASSISTANCE OF

Sir E. D. Adrian	E. G. Holmes
F. C. Bartlett	C. J. McCarthy
S. M. Coleman	Alfred Meyer
C. J. C. Earl	Lionel S. Penrose
Sir A. Fleming	A. A. W. Petrie
F. L. Golla	E. T. O. Slater
W. Stephenson	

LONDON
J. & A. CHURCHILL, LTD.

Published Four times Yearly, Ten Shillings and Sixpence net

THE JOURNAL OF MENTAL SCIENCE

Communications on general editorial matters, including MSS. for publication, books for review and other printed matter, and communications regarding the *Epitome* section, including journals to be abstracted, should be sent to the **Editor-in-Chief, Barnwood House, Gloucester.**

Communications and inquiries regarding sales should be addressed to the Publishers, **Messrs. J. & A. CHURCHILL, Ltd., 104, Gloucester Place, Portman Square, London, W.1;** and those regarding Advertisements to **Messrs. S. & H. FRETWELL, Ltd., 92, Fleet Street, London, E.C.4.** Phone: Central 7961.

THE ROYAL MEDICO-PSYCHOLOGICAL ASSOCIATION

PUBLICATIONS

From MESSRS. ADLARD & SON, LTD.,

Bartholomew Press, Dorking.

"The Clinical Study of Mental Disorders." By J. R. LORD, *C.B.E.*, M.D., F.R.C.P.E.
Price 6/-. Postage 4d.

The Charter and Bye-Laws of the Association. Price 1/-. Postage 1d.

Engraved Book-Plate of the Association. Price 1/-. Postage 1d.

Enquiry (History) Form, supplied in three sizes: 16 pp., 9 $\frac{1}{4}$ " x 6 $\frac{1}{4}$ "; 8 pp., 12 $\frac{3}{4}$ " x 8"; 4 pp., 16" x 10". Prices on application.

Card of Practical Instruction. Prices on application.

From MESSRS. J. & A. CHURCHILL, LTD.:

Catalogue of the Library of the Royal Medico-Psychological Association. 1928.
Price 2/-. Post free.

From BAILLIERE, TINDALL & COX:

"Handbook for Mental Nurses." 7th edn. 1923. Price 7/- net.

"Manual for Mental Deficiency Nurses." 1931. Price 6/6 net.

"Occupational Therapy Brochure." 1938. Price 1/-.

From the SECRETARY, 11 Chandos Street, London, W.1:

"Regulations and Rules for the Examinations for the Certificates of Proficiency in Mental Nursing and in Nursing Mental Defectives." Price 1/-.
Postage 1d.

"Syllabuses for the Examinations for the Certificates of Proficiency in Nursing Mental Defectives." Price 2d. each. Postage 1d.

Examination Papers, 1928-38 (reprinted). Price 1/6. Postage 1d.

Made and printed in Great Britain.

Not only at the Critical Moment
 BUT EQUALLY IN
CHRONIC CONDITIONS

Coramine
 BRITISH MADE TRADE MARK REGISTERED
 BRAND OF NIKETHAMIDE B.P.

Stimulant of the Vital Centres

In addition to the Ampoules for subcutaneous, intramuscular and intravenous injection, oral administration may be undertaken

with

CORAMINE LIQUID

in certain chronic cardiac affections and to combat respiratory and circulatory disorders arising from fatigue and exhaustion

(Bottles of 15 and 100 c.cm.)

and

CALCIO-CORAMINE

double salt of Coramine and calcium sulphocyanate, possessing a reinforced expectorant action in the treatment of bronchitis, catarrh, bronchopneumonia and in cardio-respiratory insufficiency.

(Bottles of 20 and 100 Tablets)

A booklet, *Coramine, Stimulant of the Vital Centres*, and literature on *Calcio-Coramine* will be sent on request to members of the Medical Profession. Samples are also available for clinical trial.

Coramine and Calcio-Coramine are made exclusively by CIBA.



THE LABORATORIES • HORSHAM • SUSSEX

Telephone : HORSHAM 1234

Telegrams : CIBALABS, HORSHAM

ADLARD & SON

LIMITED

**BARTHOLOMEW PRESS
DORKING — SURREY**



**PRINTERS
OF THIS ::
:: JOURNAL**

COMPETITIVE ESTIMATES SUBMITTED PROMPTLY

FOUNDED IN 1766, the Firm has continued uninterruptedly THROUGH MANY WARS and is able to undertake ALL CLASSES OF PRINTING.

The Staff is Specially Trained in the production of all printed matter connected with Private Hospitals and Homes, Medical, Scientific and other Institutions.

Regd. Offices : 194/200 BISHOPSGATE, E.C. 2.

Tel. : DORKING 2006.

HOLME LACY HOSPITAL

**HOLME LACY
HEREFORD ::**

**FOR LADIES SUFFERING FROM
NERVOUS AND MENTAL DISORDERS.**

This Hospital is situated in 30 acres of garden with magnificent views of the Wye Valley, and homelike surroundings.

Every facility for specialized investigation and treatment provided.

Voluntary, Temporary and Certified patients received.

Terms from Four Guineas weekly.

For further particulars apply to the Physician-Superintendent.

Telephone : Burghill 4.

THE HENDERSON RESEARCH SCHOLARSHIP IN MENTAL DISEASES

This Scholarship, of the present value of £750, tenable for one year, and subject to re-appointment in the discretion of the Trustees, has been founded to promote research in Mental and Nervous Disorders.

The applicant should state, name, age, address, nationality, and places of education, with diplomas and appointments held, also any special qualifications in research work. The scope of the research may be wide, so long as it bears directly on the prevention or causation or treatment of mental diseases. It may be Psychological, Pathological, Chemical, Therapeutic or Sociological. The Scholarship will not be awarded before 30th April, 1946.

Particulars of the Scholarship, with directions to candidates, may be obtained on application to the Secretary, James G. Moffat, Esq., C.A., 190, West George Street, Glasgow.

ELIXIR GABAIL

(BROMO-VALERIANATE)

The Ideal Sedative in all Nervous Affections

Elixir Gabail combines the sedative action of Bromide and Chloral Hydrate with the nervine and anti-spasmodic deodorised Valerianate. Pharmaceutically it is as pleasant and palatable as it is efficacious from the therapeutic standpoint, the disagreeable odour and flavour of the Valerian having been completely removed without in any way impairing its therapeutic value.

In Hysteria and Psychasthenia it relieves nervous excitement and produces a calm state of mind that is conducive to rapid recovery. It is also of value in states of temporary emotional excitement, in Hypochondriasis and Melancholia.

Dosage: One tablespoonful in water twice or thrice daily. As a hypnotic: two tablespoonfuls in water at bedtime.

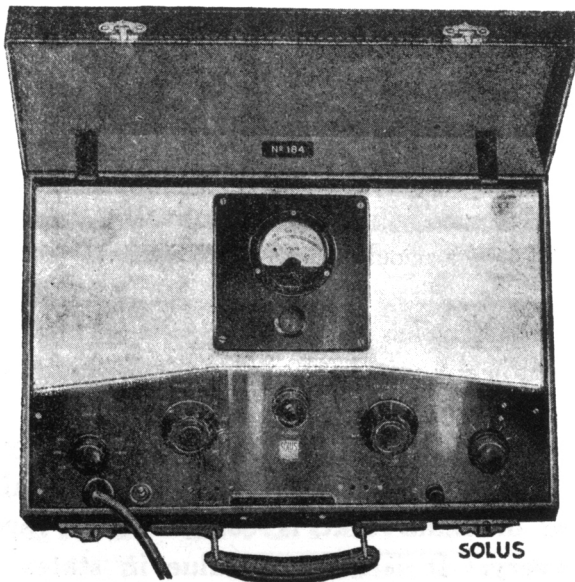
Supplied in bottles of 187 c.c. and in bulk for Hospital use.

Literature and Samples on request.

THE ANGLO-FRENCH DRUG Co. Ltd.
11-12, Guilford Street, London, W.C. 1

SOLUS

Convulsant Therapy APPARATUS



Supplied in Portable or Mobile Stand Model
ABSOLUTE SAFETY

BRITISH MADE throughout by

The SOLUS ELECTRICAL Co. Ltd.

X-Ray and Electro-Medical Apparatus Manufacturers

7, 9, 11 STANHOPE ST., LONDON, N.W. 1

Designers and Manufacturers of

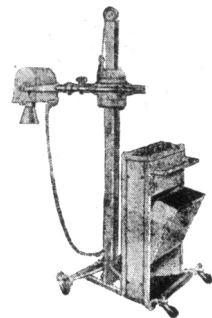
X-Ray Generator Sets.

Portable, Mobile, and Large Sets up to
6-valve rectification.

X-Ray Deep Therapy Sets.

We shall be pleased to send full particulars to your enquiry.

Phone: EUSton 5596. Grams: "EXRASOLUS," Phone, London.



MENTAL HOSPITALS, INSTITUTIONS, HOMES, ETC.

ST. ANDREW'S HOSPITAL

FOR NERVOUS AND MENTAL DISORDERS

NORTHAMPTON

President: THE MOST HON. THE MARQUESS OF EXETER, K.G., C.M.G., A.D.C.

Medical Superintendent: THOMAS TENNENT, M.D., M.R.C.P., D.P.H., D.P.M.

This Registered Hospital is situated in 130 acres of park and pleasure grounds. Voluntary patients, who are suffering from incipient mental disorders or who wish to prevent recurrent attacks of mental trouble, temporary patients, and certified patients of both sexes are received for treatment. Careful clinical, bio-chemical, bacteriological, and pathological examinations. Private rooms with special nurses, male or female, in the Hospital or in one of the numerous villas in the grounds of the various branches can be provided.

WANTAGE HOUSE

This is a Reception Hospital in detached grounds with a separate entrance, to which patients can be admitted. It is equipped with all the apparatus for the complete investigation and treatment of Mental and Nervous Disorders by the most modern methods; insulin treatment is available for suitable cases. It contains special departments for hydrotherapy by various methods, including Turkish and Russian baths, the prolonged immersion bath, Vichy Douche, Scotch Douche, Electrical baths, Plombières treatment, etc. There is an Operating Theatre, a Dental Surgery, an X-Ray Room, an Ultra-Violet Apparatus, and a Department for Diathermy and High-Frequency treatment. It also contains Laboratories for biochemical, bacteriological, and pathological research. Psychotherapeutic treatment is employed when indicated.

MOULTON PARK

Two miles from the Main Hospital there are several branch establishments and villas situated in a park and farm of 650 acres. Milk, meat, fruit and vegetables are supplied to the Hospital from the farm, gardens, and orchards of Moulton Park. Occupational therapy is a feature of this branch, and patients are given every facility for occupying themselves in farming, gardening and fruit-growing.

BRYN-Y-NEUADD HALL

The seaside house of St. Andrew's Hospital is beautifully situated in a Park of 330 acres at Llanfairfechan, amidst the finest scenery in North Wales. On the North-West side of the Estate a mile of sea-coast forms the boundary. Patients may visit this branch for a short seaside change or for longer periods. The Hospital has its own private bathing house on the seashore. There is trout-fishing in the park.

At all the branches of the Hospital there are cricket grounds, football and hockey grounds, lawn tennis courts (grass and hard courts), croquet grounds, golf courses, and bowling greens. Ladies and gentlemen have their own gardens, and facilities are provided for handicrafts, such as carpentry, etc.

For terms and further particulars apply to the Medical Superintendent (Telephone No. 2356 and 2357 Northampton), who can be seen in London by appointment.

HEIGHAM HALL, NORWICH

PRIVATE MENTAL HOME

for Nervous and Mental illness. All forms of treatment available. Fees from 4 gns. per week upwards, according to requirements. Vacancies occasionally exist at reduced fees on the recommendation of the patient's own physician.

Apply to Dr. J. A. SMALL.

TELEPHONE: NORWICH 20080.

LAVERSTOCK HOUSE SALISBURY WILTS

PRIVATE MENTAL HOME FOR LADIES AND GENTLEMEN

Completely up to date. Lovely house and grounds (18 acres). Certified and uncertified cases taken. Facilities for going to the seaside.

ESTABLISHED OVER 200 YEARS

Apply to the Med. Supt. for illustrated brochure.

Tel.: SALISBURY 2612.

MENTAL HOSPITALS, INSTITUTIONS, HOMES, ETC.

CHEADLE ROYAL CHEADLE,
CHESHIRE

A Registered Hospital for MENTAL DISEASES, and its
Seaside Branch, GLAN-Y-DON, Colwyn Bay, N. Wales.

THE object of this Hospital is to provide the most efficient means for
the treatment and care of PATIENTS OF BOTH SEXES
suffering from MENTAL and NERVOUS DISEASES. The
Hospital is governed by a Committee appointed by the Trustees of the
Manchester Royal Infirmary.

VOLUNTARY, TEMPORARY and CERTIFIED PATIENTS
RECEIVED.

For Terms and further information apply to the MEDICAL SUPERINTENDENT.

Telephone: GATLEY 2231.

CHISWICK HOUSE Phone: PINNER 234

A Private Hospital for the Treatment and Care of Mental and Nervous Illnesses in Both Sexes. **PINNER, MIDDLESEX**

A modern country house, 12 miles from Marble Arch, in attractive and secluded surroundings.

Fees from 10 guineas per week inclusive.

Cases under certificate, Voluntary and "Temporary" Patients received for treatment.

DOUGLAS MACAULAY, M.D., D.P.M.

FENSTANTON, CHRISTCHURCH ROAD,
STREATHAM HILL, S.W. 2.

Emergency Address: "FIVE DIAMONDS," CHALFONT ST. GILES, BUCKS.

A Private Home for the Care and Treatment of a limited number of Ladies with Mental and Nervous Disorders. Certified, Temporary and Voluntary Patients received.

Large Mansion with 12 acres of ground. Home-like surroundings.

Apply Dr. MADELINE LOCKWOOD, Resident Physician. Telephone: Little Chalfont 2046.

HAYDOCK LODGE, NEWTON-LE-WILLOWS,
LANCASHIRE

For the reception and treatment of PRIVATE PATIENTS of both sexes of the UPPER AND MIDDLE CLASSES suffering from Mental and Nervous Disorders, Alcoholism and Drug Addiction, either voluntary, temporary or under certificate. Patients are classified in separate buildings according to their mental condition.

Situated in park and grounds of 400 acres. Self-supported by its own farm and gardens in which patients are encouraged to occupy themselves. Every facility for indoor and outdoor recreation. For terms, prospectus, etc., apply MEDICAL SUPERINTENDENT.

Telegraphic Address: "Street," Ashton-in-Makerfield.

'Phone: 7311 Ashton-in-Makerfield.

THE COPPICE, Nottingham, REGISTERED HOSPITAL
FOR MENTAL DISEASES.

President—THE RT. HON. THE LORD BELPER.

This Institution, for the reception of Private Patients of both sexes of the Upper and Middle Classes only, at moderate rates of payment, is beautifully situated in its own grounds about two miles from Nottingham. Electro-Convulsion Therapy, Prolonged Narcosis, etc., carried out. There is a branch Seaside Villa at Lowestoft. VOLUNTARY, TEMPORARY AND CERTIFIED PATIENTS ARE RECEIVED.

For Terms, etc., apply to Dr. WODDIS, Medical Superintendent.

Telephone: NOTTINGHAM 64117.

CITY OF LONDON MENTAL HOSPITAL
Near DARTFORD, KENT.

Ladies and Gentlemen received for treatment as
VOLUNTARY, TEMPORARY or CERTIFIED PATIENTS,
at a weekly fee of £3 : 3 : 0 and upwards.

APPLY MEDICAL SUPERINTENDENT.

TELEPHONE: DARTFORD 2901
2902

The Psycho-Somatic Approach

MODERN medicine recognizes that mild depressions are frequently responsible for vague functional ailments which are none the less real because they have no demonstrable organic basis. The physical manifestations of such depressive states are amazingly varied. The first therapeutic objective may well be the elimination of the underlying psychoneurosis, and 'Benedrine' Tablets, with their strikingly beneficial effect on mood, will often accomplish this aim by producing a marked increase in mental alertness, energy, and ability to endure prolonged physical or mental strain.

'BENZEDRINE' TABLETS

MENLEY & JAMES LTD., 123 COLDHARBOUR LANE, LONDON, S.E.5

BT 135

COURT HALL, KENTON, near EXETER

FOR THE TREATMENT OF EIGHT LADIES, VOLUNTARY, TEMPORARY AND CERTIFIED PATIENTS

CLIFFDEN, TEIGNMOUTH

FOR EARLY AND CONVALESCENT CASES
Recreational Therapies are held daily by Skilled Leaders

The house stands high, with spacious balconies and extensive views of the South Devon Coast. Beautiful garden. Own Dairy in 25 acres. Private road to beach.

There is also a charming house

EBWORTHY, MANATON, DARTMOOR

situated in 20 acres, 1,100 ft. up for bracing moorland air.

Resident Physicians :

BERTHA M. MULES, M.D., B.S. ANNE S. MULES, M.R.C.S., L.R.C.P.

Telephones: STARCROSS 59 and TEIGNMOUTH 289.

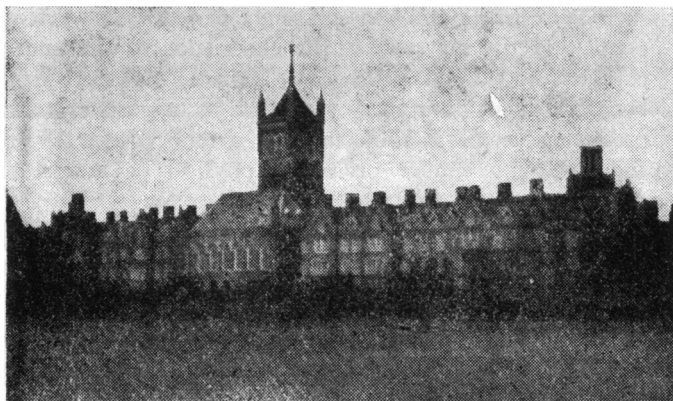
MENTAL HOSPITALS, INSTITUTIONS, HOMES, ETC.

Holloway Sanatorium

VIRGINIA WATER

**A REGISTERED HOSPITAL for the Treatment of
MENTAL DISORDERS of the EDUCATED CLASSES**

Founded by THOMAS HOLLOWAY in 1885



This Institution is situated in a beautiful and healthy locality within easy reach of London. It is fitted with every comfort. Patients can have Private Bedrooms and Special Nurses as well as the use of General Sitting Rooms, at moderate rates of payment. Voluntary Patients can be admitted. There is a Branch Establishment at CANFORD CLIFFS, BOURNEMOUTH, where Patients can be sent for a change and be provided with all the comforts of a well-appointed home.

For Terms apply to The **RESIDENT MEDICAL SUPERINTENDENT,**
St. Ann's Heath, Virginia Water, SURREY

THE FLOWER HOUSE

PRIVATE MENTAL HOME BECKENHAM HILL ROAD, S.E. 6

War Address **WONHAM HOUSE** BAMPTON N. DEVON

Telephones: BAMPTON 5 and 112.

THIS PRIVATE HOME is for GENTLEMEN suffering from Mental and Nervous disorders both under Certificates and as Voluntary Patients.

During the war FLOWER HOUSE is occupying a beautiful mansion in the Exe River Valley. Complete range of modern treatments, both organic and psychotherapeutic, are carried out by a medical staff of wide and varied experience.

For full information and illustrated brochure apply to:—

Resident Director:
Mrs. E. a BECKETT,
Wonham House, Bampton, Devon.

Medical Superintendent:
Dr. F. O'DONNELL FINIGAN.
Telephone: 5 or 112

THE
INTERNATIONAL JOURNAL
 OF
PSYCHO-ANALYSIS

Founded by
ERNEST JONES

Official Organ of the International Psycho-Analytical Association

Edited by
JAMES STRACHEY

With the assistance of
MARJORIE BRIERLEY (London) **C. P. OBERNDORF** (New York)
SYLVIA PAYNE (London) **JOHN RICKMAN** (London)

Contents of Volume XXV, Parts 3 & 4, 1944

ORIGINAL PAPERS:

Notes on Metapsychology as Process Theory. Brierley, Marjorie	99
Forty-Four Juvenile Thieves: their Characters and Home-Life. Bowlby, John	107
On Appersonation. Spierling, Otto	128
Notes on Traumatic Neuroses and Allied Conditions. Hardcastle, D. N.	132
The Nature and Treatment of Traumatic War Neuroses in Merchant Seamen. Blain, Daniel, and Heath, Robert G.	142
The Formative Activity of the Analyst. Sterba, Richard	146
On some Aspects of Masochism. Lewinsky, Hilde	150
<i>Dejà Vu</i> in Proust and Tolstoy. Pickford, R. W.	155
Some Aspects of Political Ethics from the Psycho-Analytical Point of View. Money-Kyrle, R. E.	166
<i>Abstracts. Book Reviews. Publications Received. Obituary. Bulletin of the International Psycho-Analytical Association.</i>	

Editorial Communications should be sent to the Editor, Mr. James Strachey, Lord's Wood, Marlow, Bucks, or to Dr. C. P. Oberndorf, 112 West 59th Street, New York.

Business Communications should be sent to the Publishers, Baillière, Tindall & Cox, 7 & 8 Henrietta Street, Covent Garden, London, W.C.2.

The Annual Subscription is **30s.** per Volume
 of Two Double-Parts

Published for the Institute of Psycho-Analysis by

BAILLIÈRE, TINDALL & COX
 7 & 8 Henrietta Street, London, W.C.2

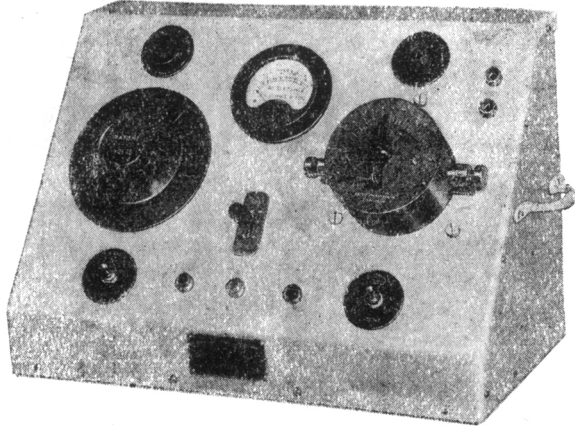
ELECTRIC CONVULSION THERAPY

for treatment of **Melancholia, Mental & Psychiatric Disorders**
(EDISWAN MODEL)

MEDICAL

OBSERVATIONS:

Many thousands of cases have been successfully treated by this method, including sufferers from INVOLUTIONAL MELANCHOLIA, CLIMACTERIC DEPRESSION, RECENT MANIA, ACUTE PSYCHOSES AND OTHER PSYCHIATRIC DISORDERS.



A new apparatus constructed to specification of Mr. GREY WALTER. The ideal method for inducing epileptiform seizures. Administration is simple, speedy and effective. Complete amnesia of patient. Apparatus is portable and is in use in more than 200 Hospitals.

Please write for brochure describing technique together with clinical data and bibliography.

COX-CAVENDISH ELECTRICAL CO., LTD.

Phone:] 45-47 Marylebone High Street, London, W. 1 [WELbeck 2886-7

Northumberland House Green Lanes, Finsbury Park, N. 4.

A PRIVATE HOSPITAL for the treatment of Mental and Nervous illnesses. Conveniently situated and easy of access from all parts. Six acres of ground, facing Finsbury Park. Voluntary and Temporary Patients received without certification. E.C.T. Shock therapy, Psychotherapy, and other modern forms of treatment.

Telephone: Stamford Hill 2688.

Telegrams: "Subsidiary, London."

For further particulars apply to the Medical Superintendent,

ROBERT M. RIGGALL,
Member, British Psycho-Analytical Society.

BETHLEM ROYAL HOSPITAL

Telephone: SPRINGPARK 1180-1181.

President: HER MAJESTY QUEEN MARY.

Phy.-Sup.: J. G. HAMILTON, M.D., D.P.M.

**FOR NERVOUS AND MENTAL
DISORDERS**

**Monks Orchard, Eden Park,
Beckenham, Kent**

This Registered Hospital is situated at Monks Orchard in some 250 acres of park, pleasure and farm grounds.

Applications can be considered on behalf of patients of the educated classes in a presumably curable condition. With a view to early treatment, voluntary or uncertified patients are admitted. Patients who can contribute 5 guineas weekly towards the cost of treatment and maintenance may be received as vacancies arise. The Committee will also consider applications for admission at lower rates and in certain cases will be prepared to admit patients free of charge. The comfort of sensitive patients is greatly enhanced by the fact that the majority are given single bedrooms.

The Medical Staff have access to a panel of Consultants in cases which present unusual symptoms requiring specialised investigation and treatment.

For Epilepsy

'EPTOIN'

Brand

Soluble Phenytoin

A preparation of soluble phenytoin supplied as a sugar-coated tablet for the treatment of epilepsy.

Eptoin Tablets are free from the narcotic effects usually associated with bromides and barbiturates, and greatly decrease the number of convulsive seizures in cases which have not responded satisfactorily to other forms of treatment.

If a patient has already been treated with barbiturates or bromides, these drugs should be withdrawn slowly as their sudden cessation before a reservoir of soluble phenytoin has been built up may precipitate attacks.

The average daily dose is one 0.1 gm. ($1\frac{1}{2}$ grains) Eptoin Tablet during or just after meals three times a day.

*Supplied in tablets containing
0.1 gm. ($1\frac{1}{2}$ grains)*

Bottle of 100 tablets . . . 4/4

Price net.



Further information will gladly be sent on request to the

MEDICAL DEPARTMENT

BOOTS PURE DRUG COMPANY LIMITED

NOTTINGHAM

'RUTONAL'

TRADE MARK

BRAND

methophenobarbitone

in epilepsy

'RUTONAL' brand methophenobarbitone, an anti-epileptic with little hypnotic action, is being used increasingly as the routine barbiturate in those institutions and practices in which epileptics are encouraged to regard themselves as normal members of society.

SUPPLIES :—

- 3 grain tablets in containers of
25, 100 and 500
- 1 grain tablets in containers of 100 and 500
- $\frac{1}{2}$ grain tablets in containers of 100 and 500



MANUFACTURED BY
MAY & BAKER LTD.

DISTRIBUTORS
PHARMACEUTICAL SPECIALITIES (MAY & BAKER) LTD., DAGENHAM

8033A