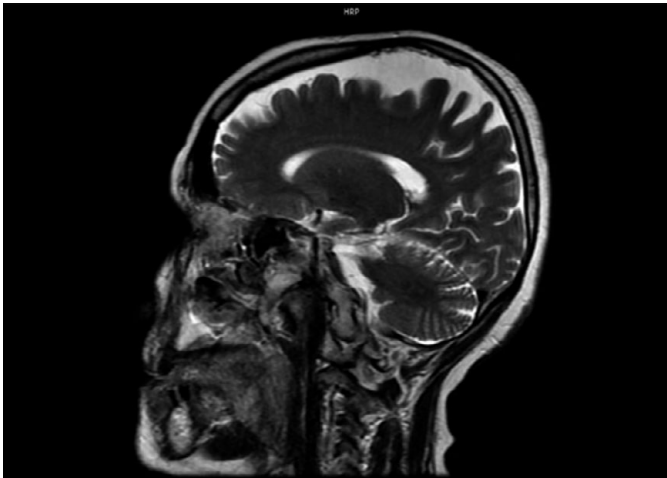
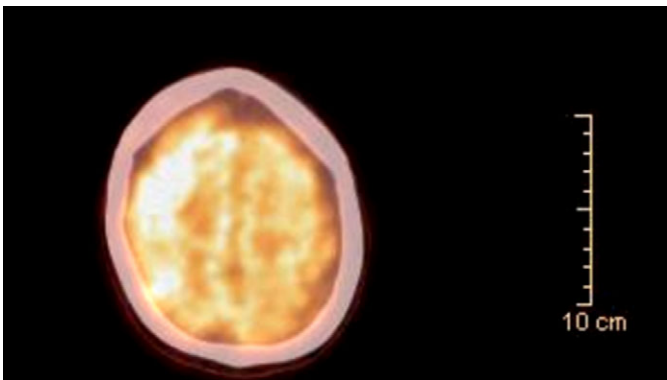


Image:**Image 2:**

Conclusions: Psychiatric symptoms in FTD may cause misdiagnosis. Organic pathologies should be kept in mind, especially in late and sudden onset symptoms.

Disclosure of Interest: None Declared

EPV0622**WHAT IS MORE DANGEROUS- SUICIDALITY IN EPILEPSY OR EPILEPSY AS A DISEASE? _A REVIEW**

H. Arshad^{1*}, K. Hussain², M. Khalid³, F. Arain⁴, A. R. Khan⁵ and A. Arshad¹

¹Psychiatry, Jinnah Sindh medical university, Karachi; ²Medicine, Aziz Bhatti Shaheed Teaching Hospital, Gujrat; ³Psychiatry, Allama Iqbal Medical College, Lahore, Pakistan; ⁴Psychiatry, Rutgers New Jersey School of Medicine, New Jersey and ⁵Psychiatry, Carilion Clinic Virginia Tech, Virginia, United States

*Corresponding author.

doi: 10.1192/j.eurpsy.2023.1942

Introduction: Epilepsy is a neurologic condition characterized by spontaneous jerky body movements. It is a chronic morbid condition

mostly diagnosed during childhood. Patients are maintained on long-term medications to prevent recurrent seizures that can damage the brain. Medications used for the management of epilepsy have several side effects and require proper monitoring. Patients with epilepsy are at increased risk of psychiatric comorbidities.

Objectives: Our aim is to find factors responsible for causing suicidality in patients with epilepsy.

Methods: A review was conducted using Pubmed database with the search terms [epilepsy] OR [neurological conditions] OR [suicide] OR [suicidal attempt] OR [suicidal ideation] OR [depression] OR [psychiatric diseases] OR [mood disorders] OR [anxiety] OR [sleeplessness] which yielded around 800 articles. The number was later reduced to be centered around the main area of interest and produced around 40 articles.

Results: Results show that many contributing factors play an unavoidable role in promoting suicidal ideation that can lead to suicidal attempts in epilepsy. The stigma associated with epilepsy leads to social isolation, lack of opportunities, financial constraints, and impact on close relationships which can be the reasons for depression. According to the review, the foremost contributing factor is the underlying social, emotional, and economic condition of epilepsy patients. Depression and anxiety are the most prevalent psychiatric comorbidities in epileptic patients. Epileptic patients who develop psychiatric ailments show decreased adherence to medications that further worsen the problem.

Conclusions: Though, this area in neurology has started getting attention for further research and guidelines. But efforts are still inadequate for this to be put into clinical practice. More desperate actions needed to be taken for proper diagnosis and management of suicidal ideations by proper use of assessment tools so that timely actions are planned. This is a highly demanding area due to the impact of depressive symptoms on the prognosis of the chronic neurologic condition.

Keywords: Suicidality; Epilepsy; neurology.

Disclosure of Interest: None Declared

EPV0623**The environmental and social stress perception in autism spectrum disorder – focusing on stress coping mechanisms and gastrointestinal manifestations**

I. M. Balmus^{1,2*}, M. A. Robea², R. Lefter³, A. Ciobica⁴, L. Gorgan⁴, C. Stanciu^{3,5} and A. Trifan⁵

¹Department of Exact Sciences and Natural Sciences, Institute of Interdisciplinary Research; ²Doctoral School of Biology, Faculty of Biology, Alexandru Ioan Cuza University of Iasi; ³Center of Biomedical Research, Romanian Academy, Iasi Branch; ⁴Department of Biology, Faculty of Biology, Alexandru Ioan Cuza University of Iasi and ⁵Department of Gastroenterology, Faculty of Medicine, Gr. T. Popa University of Medicine and Pharmacy, Iasi, Romania

*Corresponding author.

doi: 10.1192/j.eurpsy.2023.1943

Introduction: Autism spectrum disorder (ASD) is currently defined as persistent deficits in social communication and social interaction additional to repetitive behavioural patterns, and restrictive interests or activities. Several studies suggested that ASD is accompanied by defective perception and altered response to the environmental factors, including environmental and social