

Access  
leading  
journals in  
your subject

# Cambridge Core

Explore today at [cambridge.org/core](https://www.cambridge.org/core)

Cambridge Core



CAMBRIDGE  
UNIVERSITY PRESS

## CONTENTS

### Breeding and genetics

Mota, L. F. M., Martins, P. G. M. A., Littiere, T. O., Abreu, L. R. A., Silva, M. A. and Bonafé, C. M.  
Genetic evaluation and selection response for growth in meat-type quail through random regression models using B-spline functions and Legendre polynomials 667

Bhuiyan, M. S. A., Lee, D. H., Kim, H. J., Lee, S. H., Cho, S. H., Yang, B. S., Kim, S. D. and Lee, S. H.  
Estimates of genetic parameters for fatty acid compositions in the *longissimus dorsi* muscle of Hanwoo cattle 675

### Nutrition

Cerrate, S., Vignale, S. K., Ekmay, R., England, J. and Coon, C.  
Effect of dietary nutrients on ileal endogenous losses of threonine, cysteine, methionine, lysine, leucine and protein in broiler chicks 684

Pineda-Quiroga, C., Camarinha-Silva, A., Borda-Molina, D., Atxaerandio, R., Ruiz, R. and García-Rodríguez, A.  
Feeding broilers with dry whey powder and whey protein concentrate affected productive performance, ileal digestibility of nutrients and cecal microbiota community 692

Muñoz-Tamayo, R., PUILLET, L., Daniel, J. B., Sauvant, D., Martin, O., Taghipoor, M. and Blavy, P.  
Review: To be or not to be an identifiable model. Is this a relevant question in animal science modelling? 701

Keady, T. W. J. and Hanrahan, J. P.  
Plane of nutrition during the rearing phase for replacement ewes of four genotypes: I – effects on growth and development, and on ovulation rate at first joining 713

Keady, T. W. J. and Hanrahan, J. P.  
Plane of nutrition during the rearing phase for replacement ewes of four genotypes: II - effects on performance during first pregnancy and to weaning, and of their progeny 722

ZeidAli-Nejad, A., Ghorbani, G. R., Kargar, S., Sadeghi-Sefidmazi, A., Pezeshki, A. and Ghaffari, M. H.  
Nutrient intake, rumen fermentation and growth performance of dairy calves fed extruded full-fat soybean as a replacement for soybean meal 733

Aditya, S., Humer, E., Pourazad, P., Khiaosa-ard, R. and Zebeli, Q.  
Metabolic and stress responses in dairy cows fed a concentrate-rich diet and submitted to intramammary lipopolysaccharide challenge 741

Shee, C. N., Lemenager, R. P. and Schoonmaker, J. P.  
Feeding dried distillers grains with solubles to lactating beef cows: impact of excess protein and fat on post-weaning progeny growth, glucose tolerance and carcass traits 750

Saleem, A. M., Zounouy, A. I. and Singar, A. M.  
Effect of glycerol supplementation during early lactation on milk yield, milk composition, nutrient digestibility and blood metabolites of dairy buffaloes 757

Saleem, A. M., Zounouy, A. I. and Singar, A. M.  
Effect of glycerol supplementation during early lactation on milk yield, milk composition, nutrient digestibility and blood metabolites of dairy buffaloes – RETRACTION 764

### Physiology and functional biology

Tong, Q., McGonnell, I. M., Demmers, T. G. M., Roulston, N., Bergoug, H., Romanini, C. E., Verhelst, R., Guinebretière, M., Etteradossi, N., Berckmans, D. and Exadaktylos, V.  
Effect of a photoperiodic green light programme during incubation on embryo development and hatch process 765

Peng, M. L., Han, J., Li, L. L. and Ma, H. T.  
Metabolomics reveals the mechanism of (-)-hydroxycitric acid promotion of protein synthesis and inhibition of fatty acid synthesis in broiler chickens 774

Aponte, P. M., Gutiérrez-Reinoso, M. A., Sanchez-Cepeda, E. G. and Garcia-Herreros, M.  
Active immunization against GnRH in pre-pubertal domestic mammals: testicular morphology, histopathology and endocrine responses in rabbits, guinea pigs and ram lambs 784

### Welfare, behaviour and health management

Muir, W. I. and Groves, P. J.  
Incubation and hatch management: consequences for bone mineralization in Cobb 500 meat chickens 794

van Nieuwamerongen, S. E., Bolhuis, J. E., van der Peet-Schwering, C. M. C., Kemp, B. and Soede, N. M.  
Effects of pre-weaning housing in a multi-suckling system on performance and carbohydrate absorption of relatively light and heavy piglets around weaning 802

Rangstrup-Christensen, L., Krogh, M. A., Pedersen, L. J. and Sørensen, J. T.  
Sow level risk factors for early piglet mortality and crushing in organic outdoor production 810

### Livestock farming systems

Ali, B. M., Berentsen, P. B. M., Bastiaansen, J. W. M. and Oude Lansink, A.  
A stochastic bio-economic pig farm model to assess the impact of innovations on farm performance 819

Tamou, C., de Boer, I. J. M., Ripoll-Bosch, R. and Oosting, S. J.  
Traditional ecological knowledge underlying herding decisions of pastoralists 831

Salmon, G. R., Marshall, K., Tebug, S. F., Missohou, A., Robinson, T. P. and MacLeod, M.  
The greenhouse gas abatement potential of productivity improving measures applied to cattle systems in a developing region 844

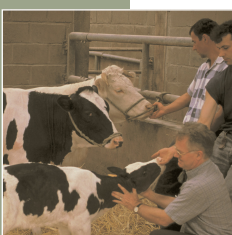
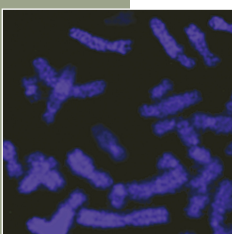
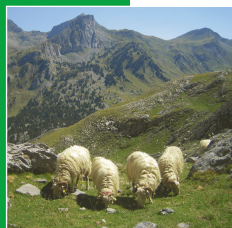
Shortall, J., Foley, C., Sleator, R. D. and O'Brien, B.  
The effect of concentrate supplementation on milk production and cow traffic in early and late lactation in a pasture-based automatic milking system 853

### Quality of animal products

Trocino, A., Birolo, M., Dabbou, S., Gratta, F., Rigo, N. and Xiccato, G.  
Effect of age and gender on carcass traits and meat quality of farmed brown hares 864

Francisco, A., Alves, S. P., Portugal, P. V., Dentinho, M. T., Jerónimo, E., Sengo, S., Almeida, J., Bressan, M. C., Pires, V. M. R., Alfaia, C. M., Prates, J. A. M., Bessa, R. J. B. and Santos-Silva, J.  
Effects of dietary inclusion of citrus pulp and rockrose soft stems and leaves on lamb meat quality and fatty acid composition 872

Marley, C. L., Fychan, R., Davies, J. W., Theobald, V. J., Scollan, N. D., Richardson, R. I. and Sanderson, R.  
Stability, fatty acid composition and sensory properties of the *M. Longissimus* muscle from beef steers grazing either chicory/ryegrass or ryegrass 882



Cambridge Core

For further information about this journal  
please go to the journal web site at:  
[cambridge.org/animal](http://cambridge.org/animal)



MIX  
Paper from  
responsible sources  
FSC® C007785

CAMBRIDGE  
UNIVERSITY PRESS