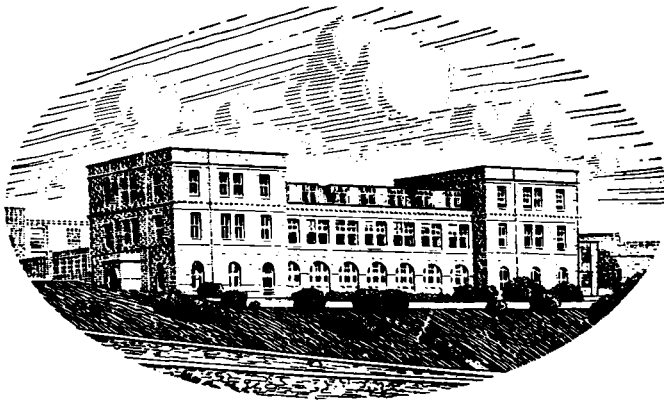


**JOURNAL OF THE
MARINE BIOLOGICAL ASSOCIATION
OF THE UNITED KINGDOM**

The Council of the Marine Biological Association wish it to be understood that they do not accept responsibility for the accuracy of statements published in this Journal, excepting when those statements are contained in an official report of the Council.

**JOURNAL OF THE
MARINE BIOLOGICAL
ASSOCIATION
OF THE UNITED KINGDOM**

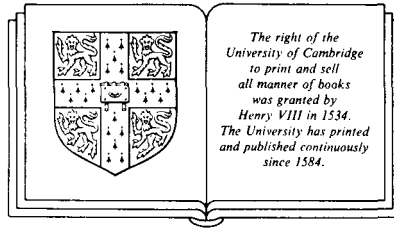


THE PLYMOUTH LABORATORY

VOLUME 66

1986

CAMBRIDGE UNIVERSITY PRESS
CAMBRIDGE
LONDON NEW YORK NEW ROCHELLE
MELBOURNE SYDNEY



PUBLISHED BY
THE PRESS SYNDICATE OF THE UNIVERSITY OF CAMBRIDGE

The Pitt Building, Trumpington Street, Cambridge CB2 1RP
32 East 57th Street, New York, NY 10022, USA
10 Stamford Road Oakleigh, Melbourne 3166 Australia

© Copyright Marine Biological Association of the U.K. 1986

Printed in Great Britain at the University Press, Cambridge

CONTENTS OF VOLUME 66

Number 1, pp. 1–268, 12 February 1986

Number 2, pp. 269–529, 1 May 1986

Number 3, pp. 531–766, 1 August 1986

Number 4, pp. 767–1020, 18 November 1986

	PAGE
Report of the Council for 1985–86	971
Income and Expenditure Account and Balance Sheet	1015
AIKEN, J., <i>see</i> ROBINSON, AIKEN and HUNT	201
AKPAN, E. B.	
Depth distribution of endolithic algae from the Firth of Clyde: implications for delineation and subdivision of the photic zone	269
AL-KADHOMIY, N. K., <i>see</i> HUGHES and AL-KADHOMIY	671
AL-MOHANNA, S. Y. and NOTT, J. A.	
B-cells and digestion in the hepatopancreas of <i>Penaeus semisulcatus</i> (Crustacea: Decapoda)	403
BARRETT, R. L., <i>see</i> SOUTHWARD <i>et al.</i>	415
BERNARD, R. T. F., <i>see</i> HODGSON and BERNARD	385
BOYLE, P. R.	
A descriptive ecology of <i>Eledone cirrhosa</i> (Mollusca: Cephalopoda) in Scottish waters	855
BOYLE, P. R., GRISLEY, M. S. and ROBERTSON, G.	
Crustacea in the diet of <i>Eledone cirrhosa</i> (Mollusca: Cephalopoda) determined by serological methods	867
BRACE, R. C. and QUICKE, D. L. J.	
Dynamics of colonization by the beadlet anemone, <i>Actinia equina</i>	21
Seasonal changes in dispersion within an aggregation of the anemone, <i>Actinia equina</i> , with a reappraisal of the role of intraspecific aggression	49
BRACHI, R., <i>see</i> BUCHANAN <i>et al.</i>	659
BRYAN, G. W. and GIBBS, P. E.	
Occurrence, composition and function of intracellular calcium phosphate granules in the musculature of nephtyid polychaetes (Annelida)	343
BRYAN, G. W., GIBBS, P. E., HUMMERSTONE, L. G. and BURT, G. R.	
The decline of the gastropod <i>Nucella lapillus</i> around south-west England: evidence for the effect of tributyltin from antifouling paints	611
BRYAN, G. W., HUMMERSTONE, L. G. and WARD, E.	
Zinc regulation in the lobster <i>Homarus gammarus</i> : importance of different pathways of absorption and excretion	175
BUCHANAN, J. B., BRACHI, R., CHRISTIE, G. and MOORE, J. J.	
An analysis of a stable period in the Northumberland benthic fauna – 1973–80.	659
BUCHANAN, J. B. and MOORE, J. J.	
A broad review of variability and persistence in the Northumberland benthic fauna – 1971–85.	641
BULLOCK, A. M., PHILLIPS, S. E., GORDON, J. D. M. and ROBERTS, R. J.	
<i>Sarcotaces</i> sp., a parasitic copepod infection in two deep-sea fishes, <i>Lepidion eques</i> and <i>Coelorhynchus occa</i>	835

	PAGE
BURT, G. R., <i>see</i> BRYAN <i>et al.</i>	611
CALDERON-PEREZ, J. A. Occurrence of nematode parasites in <i>Calocaris macandreae</i> (Crustacea: Decapoda) from an Irish Sea population	293
CHILD, C. A. and HARBISON, G. R. A parasitic association between a pycnogonid and a scyphomedusa in midwater	113
CHRISTIE, G., <i>see</i> BUCHANAN <i>et al.</i>	659
CLARIDGE, P. N., POTTER, I. C. and HARDISTY, M. W. Seasonal changes in movements, abundance, size composition and diversity of the fish fauna of the Severn Estuary	229
CLARKE, M. R., PASCOE, P. L. and MADDOCK, L. Influence of 70 watt electric lights on the capture of fish by otter trawl off Plymouth <i>See also</i> MARTIN and CLARKE <i>See also</i> SWINNEY, CLARKE and MADDOCK	711 779 483
CLAVIER, J. and RICHARD, O. Growth of juvenile <i>Haliotis tuberculata</i> (Mollusca: Gastropoda) in their natural environment	497
COLMAN, J. G., TYLER, P. A. and GAGE, J. D. Larval development of deep-sea gastropods (Prosobranchia: Neogastropoda) from the Rockall Trough	951
CORNER, E. D. S., <i>see</i> NEAL <i>et al.</i>	1
COSTELLO, M. J., <i>see</i> MYERS and COSTELLO	75
CRADDOCK, J. E., <i>see</i> JANSSEN, HARBISON and CRADDOCK	825
DANDO, P. R. and SOUTHWARD, A. J. Chemoautotrophy in bivalve molluscs of the genus <i>Thyasira</i> <i>See also</i> SOUTHWARD <i>et al.</i>	915 415
DAVENPORT, J. and KJØRSVIK, E. Buoyancy in the lumpsucker <i>Cyclopterus lumpus</i>	159
DAVENPORT, J. and STENE, A. Freezing resistance, temperature and salinity tolerance in eggs, larvae and adults of capelin, <i>Mallotus villosus</i> , from Balsfjord	145
DAWSON, W. A. Changes in Western mackerel (<i>Scomber scombrus</i>) spawning stock composition during the spawning season	367
DIXON, D. R. and FLAVELL, N. A comparative study of the chromosomes of <i>Mytilus edulis</i> and <i>Mytilus galloprovincialis</i>	219
EGLINTON, G., <i>see</i> NEAL <i>et al.</i>	1
FENCHEL, T. and PATTERSON, D. J. <i>Percolomonas cosmopolitus</i> (Ruinen) n. gen., a new type of filter feeding flagellate from marine plankton	465
FLAVELL, N., <i>see</i> DIXON and FLAVELL	219
FORTIER, L., <i>see</i> HARRIS, FORTIER and YOUNG	845
GAGE, J. D., <i>see</i> COLMAN, TYLER and GAGE	951
GIBBS, P. E. The taxonomy of some little-known Sipuncula from the north-east Atlantic region including new records	335

GIBBS, P. E. and BRYAN, G. W.	
Reproductive failure in populations of the dog-whelk, <i>Nucella lapillus</i> , caused by imposex induced by tributyltin from antifouling paints	767
See also BRYAN and GIBBS	343
See also BRYAN <i>et al.</i>	611
GORDON, J. D. M., <i>see</i> BULLOCK <i>et al.</i>	835
GRISLEY, M. S., <i>see</i> BOYLE, GRISLEY and ROBERTSON	867
GUSTAFSON, R. G., Ó FOIGHIL, D. and REID, R. G. B.	
Early ontogeny of the bivalve <i>Cardiomya pectinata</i> (Carpenter, 1865)	943
HARBISON, G. R.	
See CHILD and HARBISON	113
See JANSSEN, HARBISON and CRADDOCK	825
See PUGH and HARBISON	695
HARDISTY, M. W., <i>see</i> CLARIDGE, POTTER and HARDISTY	229
HARRIS, J. E., <i>see</i> HART, WRATHMELL and HARRIS	721
HARRIS, R. P., FORTIER, L. and YOUNG, R. K.	
A large-volume pump system for studies of the vertical distribution of fish larvae under open sea conditions	845
HART, S., WRATHMELL, A. and HARRIS, J. E.	
Gut associated lymphoid tissue in the dogfish <i>Scyliorhinus canicula</i> : a light microscopic study	721
HARTLEY, B.	
A check-list of the freshwater, brackish and marine diatoms of the British Isles and adjoining coastal waters	531
HENSEY, M. P., <i>see</i> RYAN <i>et al.</i>	731
HODGSON, A. N. and BERNARD, R. T. F.	
Observations on the ultrastructure of the spermatozoon of two mytilids from the south-west coast of England	385
HUGHES, G. M. and AL-KADHOMIY, N. K.	
Gill morphometry of the mudskipper, <i>Boleophthalmus boddarti</i>	671
HUMMERSTONE, L. G.	
See BRYAN, HUMMERSTONE and WARD	175
See BRYAN <i>et al.</i>	611
HUNT, H. G.	
See ROBINSON, AIKEN and HUNT	201
See ROBINSON and HUNT	791
JANSSEN, J., HARBISON, G. R. and CRADDOCK, J. E.	
Hatchetfishes hold horizontal attitudes during diagonal descents	825
JONES, M. B. and SMALDON, G.	
On the genus <i>Holophryxus</i> (Isopoda: Epicaridea), with description of the male and redescription of the female of <i>Holophryxus acanthephyrae</i>	303
KEARN, G. C., <i>see</i> WHITTINGTON and KEARN	93
KELLEY, D.	
Bass nurseries on the west coast of the U.K.	439
KJØRSVIK, E., <i>see</i> DAVENPORT and KJØRSVIK	159
KNIGHT-JONES, E. W., <i>see</i> THORP, KNIGHT-JONES and KNIGHT-JONES	881

	PAGE
KNIGHT-JONES, P., <i>see</i> THORP, KNIGHT-JONES and KNIGHT-JONES	881
LE MAO, P.	
Feeding relationships between the benthic infauna and the dominant benthic fish of the Rance Estuary (France)	391
LING, R., <i>see</i> SOUTHWARD <i>et al.</i>	415
LIPINSKI, M.	
Methods for the validation of squid age from statoliths	505
MADDOCK, L.	
<i>See</i> CLARKE, PASCOE and MADDOCK	711
<i>See</i> SWINNEY, CLARKE and MADDOCK	483
MARSHALL, N. J.	
Structure and general distribution of free neuromasts in the black goby, <i>Gobius niger</i>	323
MARTIN, A. R. and CLARKE, M. R.	
The diet of sperm whales (<i>Physeter macrocephalus</i>) captured between Iceland and Greenland	779
MAUCLINE, J.	
The biology of the deep-sea species of Mysidacea (Crustacea) of the Rockall Trough	803
MOORE, J. J.	
<i>See</i> BUCHANAN and MOORE	641
<i>See</i> BUCHANAN <i>et al.</i>	659
MUIRHEAD, A., TYLER, P. A. and THURSTON, M. H.	
Reproductive biology and growth of the genus <i>Epizoanthus</i> (Zoanthidea) from the north-east Atlantic	131
MYERS, A. A. and COSTELLO, M. J.	
The amphipod sibling pair <i>Leucothoe lilljeborgi</i> and <i>L. incisa</i> in British and Irish waters	75
NEAL, A. C., PRAHL, F. G., EGLINTON, G., O'HARA, S. C. M. and CORNER, E. D. S.	
Lipid changes during a planktonic feeding sequence involving unicellular algae, <i>Elminius nauplii</i> and adult <i>Calanus</i>	1
NEAVE, D. A.	
The development of the lateral line system in plaice (<i>Pleuronectes platessa</i>) and turbot (<i>Scophthalmus maximus</i>)	683
NOTT, J. A., <i>see</i> AL-MOHANNA and NOTT	403
Ó CÉIDIGH, P., <i>see</i> TULLY and Ó CÉIDIGH	931
O'HARA, S. C. M., <i>see</i> NEAL <i>et al.</i>	1
Ó FOIGHIL, D., <i>see</i> GUSTAFSON, Ó FOIGHIL and REID	943
PASCOE, P. L.	
Fish otoliths from the stomach of a thresher shark, <i>Alopias vulpinus</i>	315
Size data and stomach contents of common dolphins, <i>Delphinus delphis</i> , near Plymouth	319
<i>See also</i> CLARKE, PASCOE and MADDOCK	711
PATTERSON, D. J., <i>see</i> FENCHEL and PATTERSON	465
PHILLIPS, S. E., <i>see</i> BULLOCK <i>et al.</i>	835
POTTER, I. C., <i>see</i> CLARIDGE, POTTER and HARDISTY	229
PRAHL, F. G., <i>see</i> NEAL <i>et al.</i>	1
PUGH, P. R. and HARBISON, G. R.	
New observations on a rare physonect siphonophore, <i>Lychnagalma utricularia</i> (Claus, 1879)	695

CONTENTS OF VOLUME 66

ix
PAGE

QUICKE, D. L. J.	
<i>See</i> BRACE and QUICKE	21
<i>See</i> BRACE and QUICKE	49
REID, R. G. B., <i>see</i> GUSTAFSON, Ó FOIGHIL and REID	943
RICHARD, O., <i>see</i> CLAVIER and RICHARD	497
ROBERTS, S. J., <i>see</i> BULLOCK <i>et al.</i>	835
ROBERTSON, G., <i>see</i> BOYLE, GRISLEY and ROBERTSON	867
ROBINSON, G. A., AIKEN, J. and HUNT, H. G.	
Synoptic surveys of the western English Channel. The relationships between plankton and hydrography	201
ROBINSON, G. A. and HUNT, H. G.	
Continuous plankton records: annual fluctuations of the plankton in the western English Channel, 1958–83	791
RODEN, C. M., <i>see</i> RYAN <i>et al.</i>	731
RODHOUSE, P. G., <i>see</i> RYAN <i>et al.</i>	731
RYAN, T. H., RODHOUSE, P. G., RODEN, C. M. and HENSEY, M. P.	
Zooplankton fauna of Killary Harbour: the seasonal cycle of abundance	731
SHELLEY, C., <i>see</i> WILSON and SHELLEY	119
SMALDON, G., <i>see</i> JONES and SMALDON	303
SOUTHWARD, A. J., SOUTHWARD, E. C., DANDO, P. R., BARRETT, R. L. and LING, R.	
Chemoautotrophic function of bacterial symbionts in small Pogonophora	415
<i>See also</i> DANDO and SOUTHWARD	915
SOUTHWARD, E. C.	
Gill symbionts in thyasirids and other bivalve molluscs	889
<i>See also</i> SOUTHWARD <i>et al.</i>	415
STENE, A., <i>see</i> DAVENPORT and STENE	145
SWINNEY, G. N., CLARKE, M. R. and MADDOCK, L.	
Influence of an electric light on the capture of deep-sea fish in Biscay	483
THORP, C. H., KNIGHT-JONES, P. and KNIGHT-JONES, E. W.	
New records of tubeworms established in British harbours	881
THURSTON, M. H., <i>see</i> MUIRHEAD, TYLER and THURSTON	131
TULLY, O. and Ó CÉIDIGH, P.	
The ecology of <i>Idotea</i> species (Isopoda) and <i>Gammarus locusta</i> (Amphipoda) on surface driftweed in Galway Bay (west of Ireland)	931
TYLER, P. A.	
<i>See</i> COLMAN, TYLER and GAGE	951
<i>See</i> MUIRHEAD, TYLER and THURSTON	131
WALLACE, P. D.	
A note on the seasonal change in fat content of the autumn-spawning herring in the northern Irish Sea	71
WARD, E., <i>see</i> BRYAN, HUMMERSTONE and WARD	175
WEBB, C. J.	
Karyology of <i>Pomatoschistus microps</i> (Teleostei: Gobioidi)	259

WEBB, C. M.	
Post-larval development of the tellinacean bivalves <i>Abra alba</i> , <i>Tellina fabula</i> and <i>Donax vittatus</i> (Mollusca: Bivalvia), with reference to the late larva	749
WHEELER, A.	
The occurrence of <i>Seriola rivoliana</i> (Osteichthyes: Perciformes: Carangidae) on the British coast	15
WHITTINGTON, I. D. and KEARN, G. C.	
Rhythmical hatching and oncomiracidial behaviour in the hexabothriid monogenean <i>Rajonchocotyle emarginata</i> from the gills of <i>Raja</i> spp.	93
WILSON, J. G. and SHELLY, C.	
The distribution of <i>Nucula turgida</i> (Bivalvia: Protobranchia) from Dublin Bay, Ireland, and the effect of sediment organic content	119
WRATHMELL, A. , see HART, WRATHMELL and HARRIS	721
WRIGHT, D. A.	
Trace metal uptake and sodium regulation in <i>Gammarus marinus</i> from metal polluted estuaries in England	83
YANKSON, K.	
Observations on byssus systems in the spat of <i>Cerastoderma glaucum</i> and <i>C. edule</i>	277
YOUNG, R. K. , see HARRIS, FORTIER and YOUNG	845

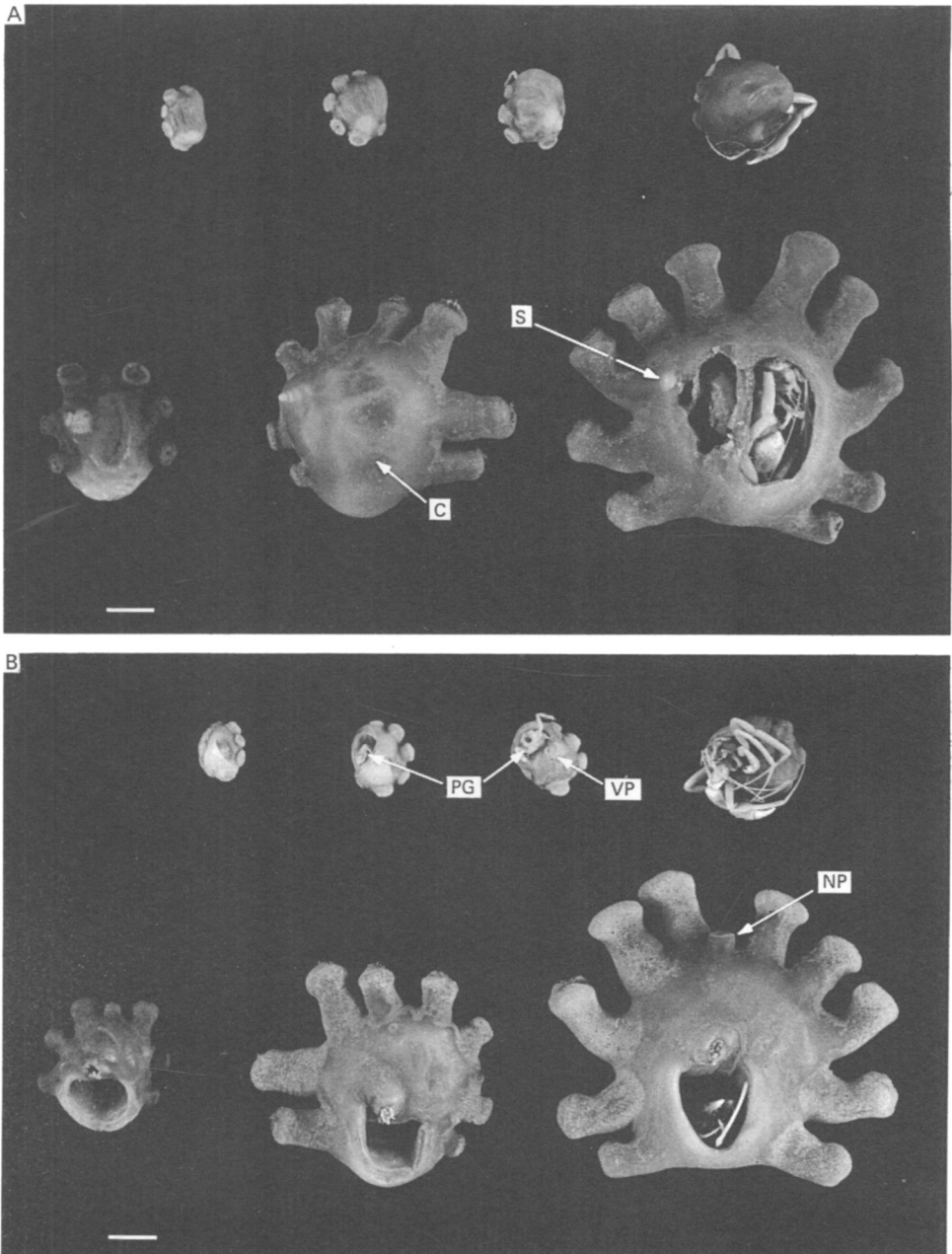
CORRIGENDA

Page 517, Table 2, column 2, line 1, for 9-991 read 9991.

Page 517, Table 2, column 2, line 2, for 9-991 read 9991.

Page 517, Table 2, column 2, line 3, for 29-973 read 29973.

CORRIGENDA



The above figure is a replacement for Fig. 4 of the paper by Muirhead, Tyler and Thurston which was first presented on page 138 of Volume 66, part 1. The figure does not differ in content but reveals some of the detail which was absent in the original printing.

SUBJECT INDEX

Behaviour

- Dispersion behaviour of cockle spat, 277–292
- Larval behaviour of gill parasites, 93–111
- Swimming attitude in hatchetfish, 825–833

Biochemistry

- Bacterial chemoautotrophy in Pogonophora, 415–437
- Fat content of herrings, 71–74
- Planktonic dietary lipid changes, 1–14

Breeding, Rearing and Fecundity

- Gametogenesis in *Epizoanthus* spp., 131–143

Comparative Anatomy

- Bivalve shell development, 749–761
- Free neuromasts of the black goby, 323–333
- Lateral line system in flatfish, 683–693
- Morphometry of the mudskipper gill, 671–682

Development, Growth and Maturation

- Bivalve shell development, 749–761
- Early development in bivalve embryo, 943–950
- Growth and maturation of *Epizoanthus* spp., 131–143
- Growth of O-group bass on nursery grounds, 439–464
- Haliotis tuberculata* in natural environment, 497–503
- Larval development in gastropods, 951–965

Ecology and Distribution

- Actinia equina*, low shore colony, 21–47
- Annual cycle of zooplankton in Killary Harbour, 731–748
- Annual fluctuation of plankton in English Channel, 791–802
- Bathymetric zonation of endolithic algae, 269–275
- Crustacean populations of drifting seaweed, 931–942
- Dispersion within *Actinia* population, 49–70
- Eledone cirrhosa* off Scotland, 855–865
- Long-term study of benthic fauna, 641–670
- Mysids of the Rockall Trough, 803–824
- Nucula turgida* in Dublin Bay, 119–130
- Seriola rivoliana*, Almaco jack, in British waters, 15–19
- Tubeworms in British harbours, 881–888

Feeding and Nutrition

- Bacterial symbiosis in bivalves, 889–929
- Bacterial symbiosis in Pogonophora, 415–437
- Diet of *Eledone cirrhosa*, 867–879
- Fish feeding in the Rance Estuary, 391–401
- Fish otoliths in stomach of a thresher shark, 315–317
- Lipids in planktonic nutrition, 1–14
- Sperm whale stomach contents, 779–790
- Stomach contents from two dolphins, 319–322

Genetics

- Karyological analysis of *Mytilus* spp., 219–228
- Karyological study of *Pomatochistus microps*, 259–266

New Species

- Percolomonas cosmopolitus* gen. et sp.nov., 465–482

Parasitology

- Copepod parasitic on deep-sea fish, 835–843
- Hatching in gill parasites of ray, 93–111
- Nematodes parasitic on *Calocaris macandreae*, 293–301
- Parasitic isopods of the genus *Holophryxus*, 303–314
- Pycnogonid parasitic on medusa, 113–117

Phycology

- Bathymetric zonation of endolithic algae, 269–275
- Check-list of British diatoms, 531–610

Physical Oceanography

- Hydrographic and planktonic surveys in English Channel, 201–218

Physiology and Experimental Biology

- Buoyancy components in lump sucker, 159–174
- Hatching stimulus in gill parasites, 93–111
- Imposex in dog-whelks induced by organic tin, 611–640
- Role of B-cells in decapod digestion, 403–414
- Temperature and salinity tolerance of capelin, 145–157
- Trace metal uptake by *Gammarus marinus*, 83–92
- Zinc regulation in lobsters, 179–199

Pollution Studies

- Gammarus* in metal polluted estuaries, 83–92
- Imposex in dog-whelks induced by organic tin, 611–640, 767–777
- Zinc regulation in lobsters, 179–199

Population Studies

- Bass stocks on nursery grounds, 439–464
- Colonization dynamics of *Actinia equina*, 21–47
- Dispersion within *Actinia equina* population, 49–70
- Fish and prey species of the Rance Estuary, 391–401
- Fish in the Severn Estuary, 229–258
- Long-term study of benthic fauna, 641–670
- Mysids of the Rockall Trough, 803–824
- Western mackerel spawning stock, 367–383

Structure and Histology

- B-cells in the decapod hepatopancreas, 403–414
- Bivalve gills, ultrastructure, 889–914
- Byssus system of cockle spat, 277–292
- Intramuscular calcium deposits in *Nephtys*, 343–365

INDEX

- Lymphoid tissue of dogfish gut, 721–729
Sperm ultrastructure of *Mytilus* spp., 385–390
Ultrastructure of *Percolomonas cosmopolitus*, 465–482
- Taxonomy and Life History**
Amphipod sibling species, 75–82
Check-list of British diatoms, 531–610
Deep-water Sipunculae of the north-east Atlantic, 335–341
- Holophryxus acanthephyrae*, 303–314
Karyological analysis of *Mytilus* spp., 219–228
Lychnagalma utricularia, a physonect siphonophore, 695–710
Sperm ultrastructure of *Mytilus* spp., 385–390
- Technique and Methodology**
Ageing of squid by statoliths, 505–526
Larval sampling by ship-borne pump, 845–854
Trawling with electric lights, 483–493, 711–720

THE MARINE BIOLOGICAL ASSOCIATION OF THE UNITED KINGDOM

THE ASSOCIATION was founded in 1884 to promote accurate researches leading to the advancement of zoological and botanical science and to an increase in our knowledge of the food, life, conditions and habits of British fishes. The work of the Association is controlled by a Council elected annually by its subscribing members.

Professor T. H. Huxley took the chair at the initial meeting held in the rooms of the Royal Society and was elected the first President. Among those present were Sir John Lubbock (afterwards Lord Avebury), Sir Joseph Hooker, H. N. Moseley, Mr G. J. Romanes, and Sir E. Ray Lankester who, after Professor Huxley, was for many years president of the Association. It was decided to build a laboratory at Plymouth, where a rich and varied fauna is found.

The Plymouth Laboratory was opened in June 1888, and, since that date, considerable additions have been made to the buildings, including a library, lecture-hall, and extensive laboratory accommodation with up-to-date equipment. Additional sea-water reservoirs have also been built, and an aquarium, modernized in 1959, opened to the public.

Since its foundation the Association has been supported by subscriptions and donations from private members, universities, learned societies, the Fishmongers' Company and other public bodies. For some time past, however, the main financial support for the work of the Plymouth Laboratory has come from Government funds, and since 1965 the Laboratory has been grant-aided through the Natural Environment Research Council.

The Marine Biological Association, under the direction of its Council, undertakes research in all branches of marine science and the main results are published in this journal. Accounts of the laboratory and aquarium are to be found in Vol. 27 (p. 761), Vol. 39 (p. 391) and Vol. 43 (p. 281), and summaries of the activities and research of the Association are given annually in the Report of the Council in the November issue of the Journal.

The laboratory is open throughout the year and its work is carried out by a fully qualified research staff under the supervision of the Director. The names of the members of the staff will be found on the inner page of the front cover. Accommodation is available for British and foreign scientific workers who wish to carry out independent research in all branches of marine science. Arrangements are made for courses for advanced students, and marine animals and plants are supplied to educational institutions.

Work at sea is undertaken by three research vessels and by a motor boat, and these also collect the specimens required in the laboratory.

TERMS OF MEMBERSHIP

	per annum	£
Annual Members, receiving the Journal	per annum	15.00
Annual Members, without the Journal	per annum	3.00
Founders		100.00
Governors		500.00

Annual subscriptions become due on 1 January.

Members of the Association have the following rights and privileges; they elect annually the Officers and Council; they are entitled to receive the Journal of the Association at a reduced rate; they are admitted to view the laboratory at Plymouth; they have the first claim to rent a place in the laboratory for research, with use of tanks, boats, etc.; they have the privilege of occupying a table for one week in each year free of charge; and they have access to the books in the library at Plymouth during working hours.

The Commissioners of Inland Revenue have approved the Association for the purposes of Section 16, Finance Act, 1958, and that the whole of the annual subscriptions paid by a member who qualifies for relief under the section will be allowable as a deduction from his emoluments assessable to income tax under Schedule E.

All correspondence should be addressed to the Director, The Laboratory, Citadel Hill, Plymouth, PL1 2PB.

CONTENTS

PAGE

NEAL, A. C., PRAHL, F. G., EGLINTON, G., O'HARA, S. C. M. and CORNER, E. D. S. Lipid changes during a planktonic feeding sequence involving unicellular algae, <i>Elminius nauplii</i> and adult <i>Calanus</i>	1
WHEELER, A. The occurrence of <i>Seriola rivoliana</i> (Osteichthyes: Perciformes: Carangidae) on the British coast	15
BRACE, R. C. and QUICKE, D. L. J. Dynamics of colonization by the beadlet anemone, <i>Actinia equina</i>	21
BRACE, R. C. and QUICKE, D. L. J. Seasonal changes in dispersion within an aggregation of the anemone, <i>Actinia equina</i> , with a reappraisal of the role of intraspecific aggression	49
WALLACE, P. D. A note on the seasonal change in fat content of the autumn-spawning herring in the northern Irish Sea	71
MYERS, A. A. and COSTELLO, M. J. The amphipod sibling pair <i>Leucothoe lilljeborgi</i> and <i>L. incisa</i> in British and Irish waters	75
WRIGHT, D. A. Trace metal uptake and sodium regulation in <i>Gammarus marinus</i> from metal polluted estuaries in England	83
WHITTINGTON, I. D. and KEARN, G. C. Rhythmical hatching and oncomiracidial behaviour in the hexabothrid monogenean <i>Rajonchocotyle emarginata</i> from the gills of <i>Raja</i> spp.	93
CHILD, C. A. and HARBISON, G. R. A parasitic association between a pycnogonid and a scyphomedusa in midwater	113
WILSON, J. G. and SHELLY, C. The distribution of <i>Nucula turgida</i> (Bivalvia: Protobranchia) from Dublin Bay, Ireland, and the effect of sediment organic content	119
MUIRHEAD, A., TYLER, P. A. and THURSTON, M. H. Reproductive biology and growth of the genus <i>Epizoanthus</i> (Zoanthidea) from the north-east Atlantic	131
DAVENPORT, J. and STENE, A. Freezing resistance, temperature and salinity tolerance in eggs, larvae and adults of capelin, <i>Mallotus villosus</i> , from Balsfjord	145
DAVENPORT, J. and KJØRSVIK, E. Buoyancy in the lump sucker <i>Cyclopterus lumpus</i>	159
BRYAN, G. W., HUMMERSTONE, L. G. and WARD, E. Zinc regulation in the lobster <i>Homarus gammarus</i> : importance of different pathways of absorption and excretion	175
ROBINSON, G. A., AIKEN, J. and HUNT, H. G. Synoptic surveys of the western English Channel. The relationships between plankton and hydrography	201
DIXON, D. R. and FLAVELL, N. A comparative study of the chromosomes of <i>Mytilus edulis</i> and <i>Mytilus galloprovincialis</i>	219
CLARIDGE, P. N., POTTER, I. C. and HARDISTY, M. W. Seasonal changes in movements, abundance, size composition and diversity of the fish fauna of the Severn Estuary	229
WEBB, C. J. Karyology of <i>Pomatoschistus microps</i> (Teleostei: Gobioidaei)	259
BOOK NOTICES	267

© Copyright by the Marine Biological Association of the UK 1986

The subscription price of volume 66, 1986, of the Journal to non-members of the Association is £105.00 net a volume of four parts, post free, or US \$240.00 in USA and Canada, payable in advance. Single parts cost £27.00 (US \$70.00 in USA and Canada) plus postage. Subscriptions may be sent to any bookseller or to Cambridge University Press, The Edinburgh Building, Shaftesbury Road, Cambridge CB2 2RU, or in USA and Canada, to Cambridge University Press, 32 East 57th Street, New York, 10022. All orders must be accompanied by payment.

CAMBRIDGE UNIVERSITY PRESS

THE PITT BUILDING, TRUMPINGTON STREET, CAMBRIDGE CB2 1 RP

32 EAST 57TH STREET, NEW YORK, NY 10022, USA

10 STAMFORD ROAD, OAKLEIGH, MELBOURNE 3166, AUSTRALIA

Printed in Great Britain by the University Press, Cambridge