

# INFECTION CONTROL & HOSPITAL EPIDEMIOLOGY

VOLUME 30, NUMBER 11

NOVEMBER 2009

## ORIGINAL ARTICLES

- 1031 Prevention of Bloodstream Infections by Use of Daily Chlorhexidine Baths for Patients at a Long-Term Acute Care Hospital** • L. Silvia Munoz-Price, MD; Bala Hota, MD, MPH; Alexander Sterner, MD; Robert A. Weinstein, MD
- 1036 Incidence of and Risk Factors for Nosocomial Bloodstream Infections in Adults in the United States, 2003** • Omar M. AL-Rawajfah, PhD, RN; Frank Stetzer, PhD; Jeanne Beauchamp Hewitt, PhD, RN
- 1045 Validation of Statewide Surveillance System Data on Central Line-Associated Bloodstream Infection in Intensive Care Units in Australia** • Emma S. McBryde, MBBS, FRACP, PhD; Judy Brett, BN; Philip L. Russo, MClinEpid; Leon J. Worth, MBBS, FRACP; Ann L. Bull, PhD; Michael J. Richards, MBBS, FRACP, MD
- 1050 Between Community and Hospital: Healthcare-Associated Gram-Negative Bacteremia among Hospitalized Patients** • Jonas Marschall, MD; Victoria J. Fraser, MD; Joshua Doherty, BS; David K. Warren, MD, MPH
- 1057 Empirical Antimicrobial Therapy for Bloodstream Infection Due to Methicillin-Resistant *Staphylococcus aureus*: No Better than a Coin Toss** • Carrie A. Herzke, MD; Luke F. Chen, MBBS, FRACP; Deverick J. Anderson, MD, MPH; Yong Choi, RN; Daniel J. Sexton, MD; Keith S. Kaye, MD, MPH
- 1062 Proposed Checklist of Hospital Interventions to Decrease the Incidence of Healthcare-Associated *Clostridium difficile* Infection** • Sarah K. Abbott, MD; Deborah S. Yokoe, MD, MPH; Stuart R. Lipsitz, ScD; Angela M. Bader, MD, MPH; William R. Berry, MD, MPA, MPH; Elise M. Tamplin, M(ASCP), MPH, CIC; Atul A. Gawande, MD, MPH
- 1070 Use of International Classification of Diseases, Ninth Revision, Clinical Modification Codes and Medication Use Data to Identify Nosocomial *Clostridium difficile* Infection** • Mia Schmiedeskamp, PharmD, PhD; Spencer Hays, PharmD, PhD, MPH; Ronald Polk, PharmD; Michael Oinonen, PharmD, MPH; Amy Pakyz, PharmD, MS
- 1077 Developing a Risk Stratification Model for Surgical Site Infection after Abdominal Hysterectomy** • Margaret A. Olsen, PhD, MPH; James Higham-Kessler, BA; Deborah S. Yokoe, MD; Anne M. Butler, MS; Johanna Vostok, BS; Kurt B. Stevenson, MD, MPH; Yosef Khan, MBBS, MPH; Victoria J. Fraser, MD, for the Prevention Epicenter Program, Centers for Disease Control and Prevention
- 1084 Keeping Vulnerable Children Safe from Pertussis: Preventing Nosocomial Pertussis Transmission in the Neonatal Intensive Care Unit** • Amy L. Greer, MSc, PhD; David N. Fisman, MD, MPH, FRCPC
- 1090 Evaluation of an Electronic Device for Real-Time Measurement of Alcohol-Based Hand Rub Use** • John M. Boyce, MD; Timothea Cooper, RN; Michael J. Dolan, BS

## REVIEW ARTICLE

- 1096 Ethanol Lock Technique: Review of the Literature** • Melissa Maiefski; Mark E. Rupp, MD; Elizabeth D. Hermsen, PharmD, MBA, BCPS-ID



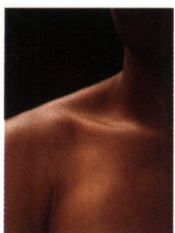
THE OFFICIAL JOURNAL OF THE SOCIETY FOR HEALTHCARE EPIDEMIOLOGY OF AMERICA

CONTENTS CONTINUED INSIDE

NEWLY PUBLISHED STUDY:

**"ChloroPrep<sup>®</sup> is more effective than DuraPrep<sup>™</sup> and povidone-iodine at eliminating bacteria"<sup>1</sup>**

- *Journal of Bone and Joint Surgery*  
August 2009



In a newly published study in the *Journal of Bone and Joint Surgery*, ChloroPrep was proven to be the most effective way to prep for the shoulder region.<sup>1</sup>

- After treatment, ChloroPrep had an overall 7% positive culture rate, compared to 19% and 31% for DuraPrep<sup>™</sup> and povidone-iodine, respectively.
- ChloroPrep has again been proven superior to DuraPrep at reducing bacteria that can cause infection.<sup>2</sup>
- The 2% CHG formulation is now proven in 37 outcome studies and supported by 11 evidence-based guidelines.



**ChloroPrep. The proven way to prep.**

**REFERENCES** 1. Saltzman MD, Nuber GW, Gryzlo SM, Marecek GS, Koh JL. Efficacy of surgical preparation solutions in shoulder surgery. *J Bone Joint Surg Am.* 2009;91(8):1949-1953. 2. Ostrander RV, Botte MJ, Brage ME. Efficacy of surgical preparation solutions in foot and ankle surgery. *J Bone Joint Surg Am.* 2005;87(5):980-985.

Request a copy of the study. Contact your rep, visit [chloroprep.com](http://chloroprep.com) or call 800-523-0502.

**ChloroPrep<sup>®</sup>**  
Patient Preoperative Skin Preparation  
2% Chlorhexidine Gluconate (CHG)  
& 70% Isopropyl Alcohol (IPA)

 **CareFusion**

© 2009 CareFusion Corporation or one of its subsidiaries. All rights reserved. ChloroPrep is a registered trademark of CareFusion or one of its subsidiaries. DuraPrep is a trademark of 3M. ADV-Saltz0909



# INFECTION CONTROL & HOSPITAL EPIDEMIOLOGY

VOLUME 30, NUMBER 11

NOVEMBER 2009

CONTENTS CONTINUED FROM COVER

## CONCISE COMMUNICATIONS

- 1109 **Use of Longitudinal Surveillance Data to Assess the Effectiveness of Infection Control in Critical Care** • John W. Ahern, PharmD; W. Kemper Alston, MD, MPH
- 1113 **Usefulness of Weekly Methicillin-Resistant *Staphylococcus aureus* Screening** • Raouchan Rymzhanova, MD; Michelle Thouverez, PhD; Daniel Talon, PharmD, PhD; Xavier Bertrand, PharmD, PhD
- 1116 **Antimicrobial Susceptibility of Bacteria Isolated from Urine Samples Obtained from Nursing Home Residents** • Rituparna Das, MD; Eleanor Perrelli, MSN; Virginia Towle, MPhil; Peter H. Van Ness, PhD, MPH; Manisha Juthani-Mehta, MD
- 1120 **Surgical Site Infection as a Surrogate Marker of Physician Impairment** • Robert J. Sherertz, MD; Tobi B. Karchmer, MD, MS
- 1123 **Prospective Comparison of Tuberculin Skin Test and QuantiFERON-TB Gold In-Tube Assay for the Detection of Latent Tuberculosis Infection among Healthcare Workers in a Low-Incidence Setting** • Kristin J. Cummings, MD, MPH; Tamara S. Smith, MD; Elizabeth S. Shogren, PhD; Rashida Khakoo, MD; Sharmilarani Nanda, MD; Lana Bunner, RN, BSN; Ann Smithmyer, RN, MSN, FNP-BC; Darlene Soccorsi, RN, MSN, FNP-BC; Michael L. Kashon, PhD; Gerald H. Mazurek, MD; Lloyd N. Friedman, MD; David N. Weissman, MD

## LETTERS TO THE EDITOR

- 1127 **Hospital Costs in Patients with Nosocomial Methicillin-Resistant or Methicillin-Susceptible *Staphylococcus aureus* Bloodstream Infection** • Dominique M. Vandijck, PhD; Lieven Annemans, PhD; Dirk P. Vogelaers, PhD; Stijn I. Blot, PhD
- 1128 **Reply to Vandijck et al** • Debby Ben-David, MD; Ilya Novikov, PhD; Leonard A. Mermel, DO, ScM
- 1128 **Translating Evidence Into Practice: The Importance of Continuing Local Bacterial Surveillance Even When National Data Are Available** • Martin Darveau, BPharm, MSc; Catherine Ducharme-Désilets, BPharm; Patrick Archambault, MD, FRCPC, MSc; Diane Marcoux, MD
- 1130 **Comparison of Methods of Measuring Pharmacy Sales of Antibiotics without Prescriptions in Pratumthani, Thailand** • Anucha Apisarnthanarak, MD; Linda M. Mundy, MD
- 1132 **Measuring Hand Hygiene Compliance: A New Frontier for Improving Hand Hygiene** • Andrew G. Sahud, MD; Nitin Bhanot, MD, MPH
- 1132 **Influenza Pseudoinfection** • Burke A. Cunha, MD; Paul J. Lee, MD; Francisco M. Perez, MD

An Official Publication of the Society for Healthcare Epidemiology of America

## EDITOR

Suzanne F. Bradley, MD • Ann Arbor, MI

## DEPUTY EDITOR

Carol A. Kauffman, MD • Ann Arbor, MI

## SENIOR ASSOCIATE EDITORS

C. Glen Mayhall, MD • Galveston, TX  
Gina Pugliese, RN, MS • Chicago, IL  
William Schaffner, MD • Nashville, TN

## ASSOCIATE EDITORS

Ebbing Lautenbach, MD, MPH • Philadelphia, PA  
Preeti N. Malani, MD, MSJ • Ann Arbor, MI  
David Weber, MD, MPH • Chapel Hill, NC

## STATISTICS CONSULTANT

Rodney L. Dunn, MS • Ann Arbor, MI

## SECTION EDITOR FOR GUIDELINES, POSITION PAPERS, AND INVITED REVIEWS

Carol Chenoweth, MD • Ann Arbor, MI

## MANAGING EDITOR

Rob Blixt • Chicago, IL

## PAST EDITORS

### *Infection Control*

Richard P. Wenzel, MD, 1980–1990 (vols. 1–11)

### *Infection Control and Hospital Epidemiology*

Richard P. Wenzel, MD, 1991–1992 (vols. 12 and 13)

Michael D. Decker, MD, 1993–2001 (vols. 14–22)

Barry M. Farr, MD, 2002–2004 (vols. 23–25)

William R. Jarvis, MD, 2005–2006 (vols. 26 and 27)

## EDITORIAL ADVISORY BOARD

Miriam Alter, PhD, MD • Atlanta, GA  
Anucha Apisarntharak, MD • Pratumthani, Thailand  
Lennox Archibald, MD, FRCP • Alachua, FL  
Hilary Babcock, MD • St. Louis, MO  
Elise M. Beltrami, MD, MPH • Decatur, GA  
David Birnbaum, PhD, MPH • Sidney, BC  
Christian Brun-Buisson, MD • Creteil, France  
John P. Burke, MD • Salt Lake City, UT  
David P. Calfee, MD, MS • New York, NY  
Yehuda Carmeli, MD, MPH • Tel Aviv, Israel  
Sara E. Cosgrove, MD, MS • Baltimore, MD  
Donald E. Craven, MD • Burlington, MA  
Burke A. Cunha, MD • Mineola, NY  
Erika D'Agata, MD, MPH • Boston, MA  
Patch Dellinger, MD • Seattle, WA  
Daniel Diekema, MD • Iowa City, IA  
Charles E. Edmiston, Jr., PhD • Milwaukee, WI  
Theodore C. Eickhoff, MD • Denver, CO  
Martin S. Favero, PhD • Irvine, CA  
Jon P. Furuno, PhD • Baltimore, MD  
Richard A. Garibaldi, MD • Farmington, CT  
Petra Gastmeier, MD • Hanover, Germany  
Dale N. Gerding, MD • Hines, IL  
Donald A. Goldmann, MD • Boston, MA  
Donna Haiduvan, RN, PhD, CIC • Tampa, FL  
Anthony D. Harris, MD, MPH • Baltimore, MD  
David K. Henderson, MD • Bethesda, MD  
Loreen A. Herwaldt, MD • Iowa City, IA  
Peter N. R. Heseltine, MD • San Juan, CA  
Karen Hoffmann, RN, CIC, MS • Chapel Hill, NC  
Janine Jagger, MPH, PhD • Charlottesville, VA  
John A. Jernigan, MD, MS • Atlanta, GA  
James T. Lee, MD, PhD • St. Paul, MN  
L. Clifford McDonald, MD • Atlanta, GA

Allison McGeer, MD • Toronto, ON  
Leonard A. Mermel, DO, ScM • Providence, RI  
Robert R. Muder, MD • Pittsburgh, PA  
Carlene A. Muto, MD, MS • Pittsburgh, PA  
Joseph M. Mylotte, MD, CIC • Buffalo, NY  
David L. Paterson, MBBS, FRACP • Pittsburgh, PA  
Jan Evans Patterson, MD • San Antonio, TX  
Sindy M. Paul, MD • Yardley, PA  
David A. Pegues, MD • Los Angeles, CA  
Eli Perencevich, MD, MS • Baltimore, MD  
Michael A. Pfaller, MD • Iowa City, IA  
Didier Pittet, MD, MS • Geneva, Switzerland  
Gina Pugliese, RN, MS • Chicago, IL  
Isaam Raad, MD • Houston, TX  
Jordi Rello, MD, PhD • Tarragona, Spain  
Manfred L. Rotter, MD, DipBact • Vienna, Austria  
Henning Rüden, MD • Berlin, Germany  
William A. Rutala, PhD, MPH • Chapel Hill, NC  
Lisa Saiman, MD, MPH • New York, NY  
Sanjay Saint, MD, MPH • Ann Arbor, MI  
William E. Scheckler, MD • Madison, WI  
Lynne M. Schulster, PhD • Atlanta, GA  
John A. Sellick, DO • Amherst, NY  
Kent Sepkowitz, MD • New York, NY  
Samir Shah, MD, MSCE • Philadelphia, PA  
Andrew E. Simor, MD • Toronto, ON  
Philip W. Smith, MD • Omaha, NE  
Denis W. Spelman, MD • Prahan, Victoria, Australia  
Jeffrey R. Starke, MD • Houston, TX  
Janet E. Stout, PhD • Pittsburgh, PA  
Clyde Thornsberrry, PhD • Franklin, TN  
William Trick, MD • Chicago, IL  
Antoni Trilla, MD, PhD • Barcelona, Spain  
Robert A. Weinstein, MD • Chicago, IL  
Andreas Widmer, MD, MS • Basel, Switzerland  
Marcus Zervos, MD • Royal Oak, MI

*Infection Control and Hospital Epidemiology* (ISSN 0899-823X) is published monthly by the University of Chicago Press, 1427 E. 60th St., Chicago, IL 60637-2954 (<http://www.journals.uchicago.edu/ICHE/>). The editorial office is in Chicago, Illinois.

## Editorial Office

Communications should be addressed to the Editor, *Infection Control and Hospital Epidemiology*, 1427 E. 60th St., Chicago, IL 60637-2954; (e-mail: [iche@press.uchicago.edu](mailto:iche@press.uchicago.edu); telephone: 773-773-2298, fax: 773-753-4247). Contributors should consult the Information for Authors, which is available at the journal's Web site.

## Advertising

Please direct advertising inquiries to Journals Advertising, University of Chicago Press, 1427 E. 60th St., Chicago, IL 60637 (e-mail: [cbarhany@press.uchicago.edu](mailto:cbarhany@press.uchicago.edu); telephone: 773-702-8187; fax: 773-702-0172). Publication of an advertisement in *Infection Control and Hospital Epidemiology* does not imply endorsement of its claims by the Society for Healthcare Epidemiology of America, by the Editor, or by the University of Chicago. Correspondence regarding advertising should be addressed to the advertising office in Chicago.

## Permissions

Articles may be copied or otherwise reused without permission only to the extent permitted by Sections 107 and 108 of the US Copyright Law. Permission to copy articles for personal, internal, classroom, or library use may be obtained from the Copyright Clearance Center (<http://www.copyright.com>). For all other uses, such as copying for general distribution,

for advertising or promotional purposes, for creating new collective works, or for resale, please contact the Permissions Coordinator, Journals Division, University of Chicago Press, 1427 E. 60th St., Chicago, IL 60637 (e-mail: [journalpermissions@press.uchicago.edu](mailto:journalpermissions@press.uchicago.edu); fax: 773-834-3489). Articles in the public domain may be used without permission, but it is customary to contact the author.

## Subscriptions

Subscription rates for 2010 are \$180 for individuals and \$413 for institutions. Single-copy rates are \$18 for individuals and \$41 for institutions. Additional rates for non-US subscribers and reduced rates for fellows, residents, and students are available at <http://www.journals.uchicago.edu/ICHE>. Individuals have the option to order directly from the University of Chicago Press. Subscription agent for Japan: Kinokuniya Company, Ltd.

Please direct subscription inquiries, requests for back issues, and address changes to Journals Division, University of Chicago Press, P.O. Box 37005, Chicago, IL 60637 (e-mail: [subscriptions@press.uchicago.edu](mailto:subscriptions@press.uchicago.edu); telephone: 773-753-3347 or toll-free in the United States and Canada 877-705-1878; fax: 773-753-0811 or toll-free 877-705-1879).

**Postmaster:** Send address changes to *Infection Control and Hospital Epidemiology*, University of Chicago Press, P.O. Box 37005, Chicago, IL 60637-2954.

Periodicals postage paid at Chicago, Illinois, and at an additional mailing office.

Published by the University of Chicago Press, Chicago, Illinois. © 2009 by the Society for Healthcare Epidemiology of America. All rights reserved. This publication is printed on acid-free paper.



Infection prevention and control in healthcare settings is a critical public health problem rapidly gaining interest.

**Are you current with the latest trends and evidence?**

**Join SHEA Today!**

Stay on top of emerging science and evidence-based strategies to prevent and control infections and to improve quality-of-care in your healthcare facility.

SHEA supports members' efforts to improve patient care and healthcare worker safety through:

- Research
- Education & Training
- Policy Development
- Evidence-based Practical Guidelines
- Mentorship and Professional Development

**Application Details**

[www.shea-online.org](http://www.shea-online.org)

[info@shea-online.org](mailto:info@shea-online.org)

(703) 684-1006

Annual membership offers:

- Subscription and online access to *Infection Control and Hospital Epidemiology (ICHE)*, the official journal of SHEA
- Epidemiology News and e-newsletter
- Discounted registration on SHEA educational programming
- Online member network and job board



*The Society for Healthcare Epidemiology of America*



# Save the Date

## Fifth Decennial International Conference on Healthcare-Associated Infections 2010

March 18-22, 2010 • Hyatt Regency Atlanta • Atlanta, Georgia

Join your colleagues from around the world to set the agenda for healthcare-associated infection prevention in the next decade based on:

- Scientific evidence
- Current and emerging methodologies
- And much more.

**Put this important event on your calendar now and watch for more information.**

"Changing paradigms in infection prevention:  
towards elimination of adverse events"

[www.Decennial2010.com](http://www.Decennial2010.com)

CO-ORGANIZED BY:



Association for Professionals  
in Infection Control and Epidemiology, Inc.

