



Cambridge Core

The new home of
academic content
[cambridge.org/core](https://www.cambridge.org/core)

Cambridge Core



CAMBRIDGE
UNIVERSITY PRESS

Deepen your knowledge.

ZEISS Crossbeam 550

// INNOVATION
MADE BY ZEISS



Your FIB-SEM for high throughput 3D analysis and nanofabrication

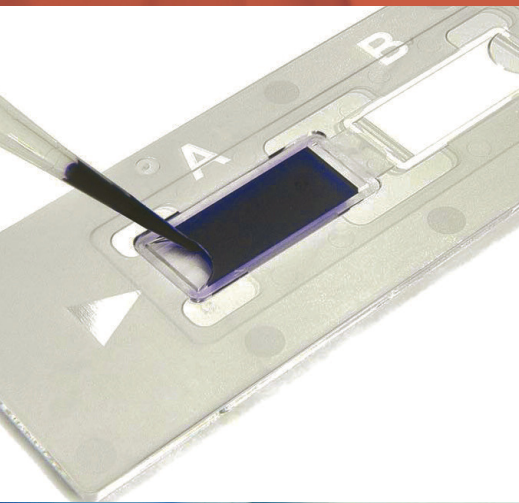
With ZEISS Crossbeam 550 you experience an outstanding combination of imaging performance and analytical power. Process any sample on a nanoscopic scale with the next-generation FIB.

www.zeiss.com/crossbeam



INDEX TO ADVERTISERS

Denton Vacuum	A5a
Diatome	Cover 2
Electron Microscopy Sciences, EMS	Cover 3, A8
Hitachi	Cover 4
Physik Instrumente	A5b
Tescan	A3
Thermo Fisher Scientific	A6
ZEISS	A10

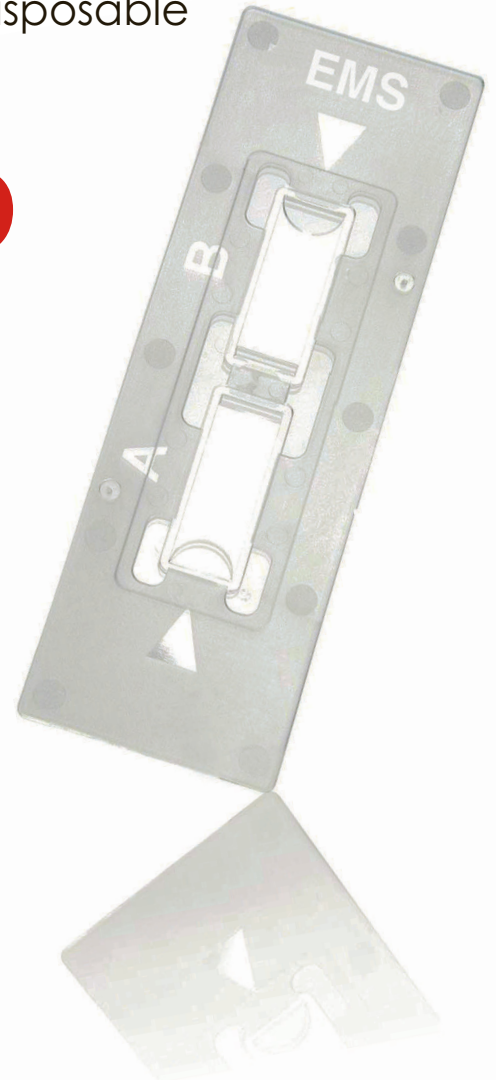


The world's first truly disposable
Hemacytometer

C-Chip

Disposable Hemacytometer

The C-Chip offers precise volume control and is easy to use.



Applications

Blood Analysis:
Blood Cell Counting

Cell Culture:
Cell Concentration Measurement/
Cell Viability Test

Microbiology:
Bacteria and Fungal Spore
Counting

IVF, IUI:
Sperm Counting

Features

- Quartz grade optical plastic
- Precise design leads to highly reproducible results
- Two counting chambers fitted with clearest grid pattern rich in contrast
- Exposure to infectious material is reduced due to its closed system
- Continuous sample containment
- Light and unbreakable compared to glass
- No need for cover slips
- Time and cost saving
- For single use

Specifications

Measurements 25(W) x 75(L) x 1.6(T) mm

Chamber Volume 10 micro liters

Chamber Depth 100, 200 or 10 Micron
(Depends on model)

Ordering Information:

Cat No.	Description	Tests per Slide	Qty.
63508-01	Neubauer Improved, 100 tests	2 tests/slide	50 slides
63508-03	Fuchs Rosenthal	2 tests/slide	50 slides
63508-06	Burker	2 tests/slide	50 slides
63508-07	Burker Turk	2 tests/slide	50 slides
63508-10	Malassez	2 tests/slide	50 slides

**Electron
Microscopy
Sciences**

Electron Microscopy Sciences
P.O. Box 550 • 1560 Industry Rd.
Hatfield, Pa 19440
Tel: (215) 412-8400
Fax: (215) 412-8450
email: sgkcck@aol.com
or stacie@ems-secure.com
www.emsdiasum.com

Full-Sized Performance That Fits Anywhere

The Hitachi FlexSEM 1000 is a compact variable-pressure SEM that delivers the performance of a conventional SEM in a lab-friendly footprint, requiring only a standard wall outlet for power. The FlexSEM will change your view of electron microscopy!

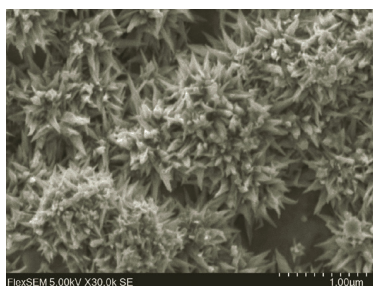


FlexSEM 1000

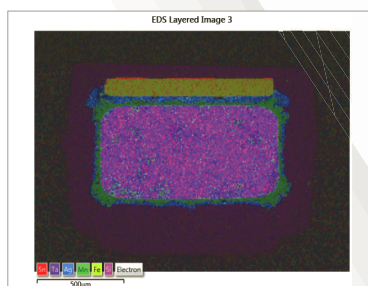
- ✓ Unparalleled image quality in a compact design
- ✓ Ease of use with intuitive GUI and automated functions for improved accuracy
- ✓ Small footprint (450 mm width for the main unit)
- ✓ Variable-pressure technology for a variety of sample observation without sample preparation
- ✓ EDS analysis capability*
- ✓ Hitachi Map 3D for surface 3D analysis*

(*: Optional Item)

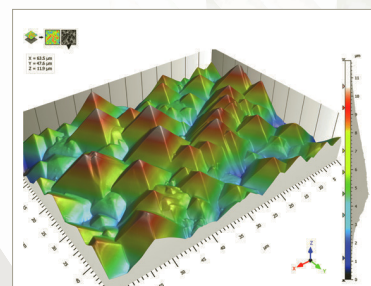
Pitcon 2018 Booth #3467



Sample: Hydrogen Absorbing Alloy
Mag: 30,000x
Voltage: 5 keV



Sample: Cross-Sectioned Surface Mounted Capacitor
Probe Current: 3 nA
Acquisition Time: Single 10s Frame
Voltage: 20 keV



Sample: Solar Cell
Reconstructed Area: 63 μm x 48 μm x 11 μm
Voltage: 5 keV

Think Outside the Lab

www.hitachi-hightech.com/us/FlexSEM

Hitachi High Technologies America, Inc.
microscopy@hitachi-hita.com
1-800-253-3053

 **Science for a better tomorrow**

© 2018 Hitachi High Technologies America, Inc. All rights reserved.