


Letter to the Editor: New Observation

Cerebral Air Embolism Following Catheter Ablation for Atrial Fibrillation

Juan Pablo Millán Sandoval¹ , Gabrielle Dufort¹, Laurent Letourneau-Guillon², Moishe Liberman³ and Céline Odier⁴

¹Centre Hospitalier de l'Université de Montréal (CHUM), University of Montreal, Montreal, Canada, ²Radiology Department, Centre Hospitalier de l'Université de Montréal (CHUM), University of Montreal, Montreal, Canada, ³Division of Thoracic Surgery, CHUM Endoscopic Tracheobronchial and Esophageal Center (CETOC), University of Montreal, Montreal, Canada and ⁴Centre Hospitalier de l'Université de Montréal (CHUM), Université de Montréal and Axe Neurosciences, Centre de Recherche du CHUM, Montreal, Canada

Keywords: Stroke imaging; Vascular neurology; Cardiology

A 58-year-old woman with a history of catheter ablation for atrial fibrillation (AF) 3 weeks prior presented with right middle cerebral artery syndrome and a temperature of 38°C. Her National Institutes of Health Stroke Scale (NIHSS) was 23. A head computed tomography (CT) scan revealed subacute right thalamic and striatal infarcts and acute right frontoparietal infarct with air emboli (Figure 1b). An emergent thoracic CT angiogram showed an image compatible with an atrio-esophageal fistula (Figure 1a). The patient underwent emergency surgery to repair the fistula (Figure 2). Patient developed sepsis and positive blood cultures for *Streptococcus mitis/oralis*, for which she was treated with IV antibiotics for 14 days. She managed to survive, however, with important sequelae such as dense left hemiplegia. At 6-week follow-up, the patient is continuing inpatient neurorehabilitation.

Atrio-esophageal fistula is a rare complication of catheter ablation for AF,¹ with an incidence of 0.04% post-procedure. It is

associated with a high mortality rate of 67%–100%.² Common neurological symptoms include seizures, septic embolic stroke, and air embolism.^{3,4} A high index of suspicion is warranted in patients presenting with cerebral air emboli following catheter ablation, and prompt surgical intervention can lead to favorable outcomes.⁵

The head CT scan played a crucial role in identifying the presence of air emboli in the cerebral vasculature. The subacute right thalamic and striatal infarcts, as well as the acute right frontoparietal infarct, indicated air embolic stroke caused by the atrio-esophageal fistula (AEF). The emergent thoracic CT angiogram further confirmed the presence of AEF, allowing for prompt surgical intervention.

This case highlights the importance of neuroimaging in the early detection of rare complications such as AEF following catheter ablation for AF. In patients presenting with neurological symptoms and a history of recent catheter ablation, neuroimaging should be

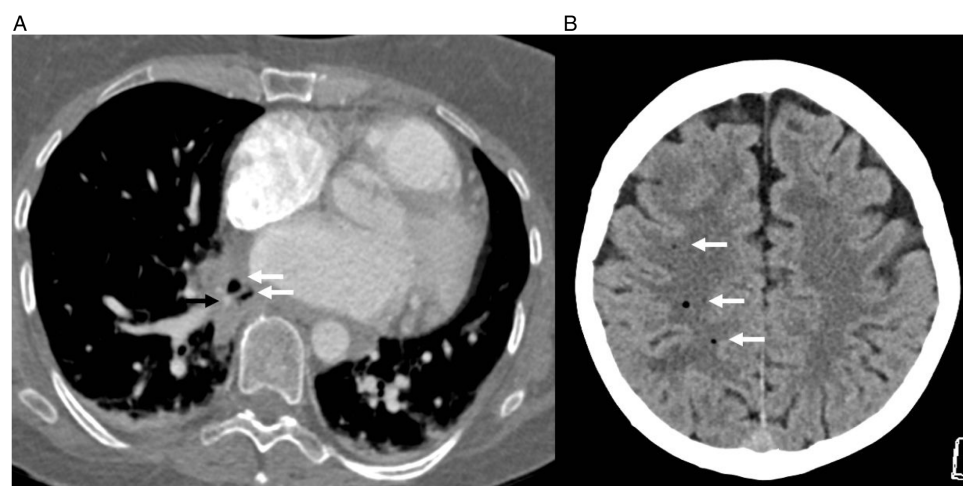


Figure 1: *a.* selected axial image of the admission contrast-enhanced chest CT angiogram. Abnormal extra-digestive air foci (right arrows) were present around the right inferior pulmonary vein (black arrow). In addition, there were local inflammatory changes revealed by the presence of soft tissue infiltration centered on the latter structures. Note that no air was identified within the cardiac chambers. *b.* selected axial image from the initial noncontrast head CT showing air emboli in the right MCA territory (white arrows).

Corresponding author: Juan Pablo Millán Sandoval; E-mail: juan.pablo.millan.sandoval@umontreal.ca

Cite this article: Millán Sandoval JP, Dufort G, Letourneau-Guillon L, Liberman M, and Odier C. (2024) Cerebral Air Embolism Following Catheter Ablation for Atrial Fibrillation. *The Canadian Journal of Neurological Sciences* 51: 461–462, <https://doi.org/10.1017/cjn.2023.55>

© The Author(s), 2023. Published by Cambridge University Press on behalf of Canadian Neurological Sciences Federation. This is an Open Access article, distributed under the terms of the Creative Commons Attribution licence (<http://creativecommons.org/licenses/by/4.0/>), which permits unrestricted re-use, distribution and reproduction, provided the original article is properly cited.

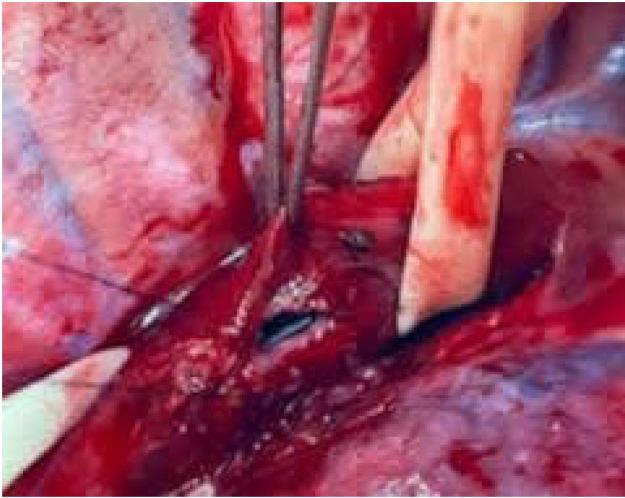


Figure 2: Intraoperative images showing the atrio-esophageal fistula.

performed urgently to assess for possible AEF and cerebral air emboli. The identification of air emboli within the cerebral vasculature on head CT scans should raise suspicion for AEF.

Furthermore, clinicians should be aware of the potentially fatal consequences of AEF and the importance of prompt surgical intervention. In this case, timely surgery to repair the fistula led to a favorable outcome for the patient.

Atrio-esophageal fistula is a rare but life-threatening complication of catheter ablation for AF. Clinicians should maintain a high index of suspicion for this complication in patients presenting

with cerebral air emboli and neurological symptoms following the procedure. Neuroimaging plays a vital role in the early detection and management of AEF and prompt surgical intervention can lead to favorable outcomes.

Acknowledgements. The authors thank the patient for consenting to the publication of this case.

Disclosures. The authors report no disclosures related to the manuscript.

Statement of Authorship. Each author of this article has contributed to the ideas and writing that form the manuscript according to their respective skills, knowledge, and expertise.

References

1. Mujović N, Marinković M, Lenarczyk R, Tilz R, Potpara TS. Catheter ablation of atrial fibrillation: An overview for clinicians. *Adv Ther.* 2017;34:1897–917. DOI [10.1007/s12325-017-0590-z](https://doi.org/10.1007/s12325-017-0590-z).
2. Pappone C, Vicedomini G, Santinelli V. Atrio-esophageal fistula after AF ablation: Pathophysiology, prevention & Treatment. *J Atr Fibrillation.* 2013;6:860. DOI [10.4022/jafib.860](https://doi.org/10.4022/jafib.860).
3. Zhang P, Bian Y. Cerebral arterial air embolism secondary to iatrogenic left atrial-esophageal fistula: A case report. *BMC Neurol.* 2020;20:1–4. DOI [10.1186/s12883-020-1602-1](https://doi.org/10.1186/s12883-020-1602-1).
4. Fatula LK, Bolton WD, Hale AL, Davis BR, Stephenson JE, Ben-Or S. Atrial esophageal fistula secondary to ablation for atrial fibrillation. *Innov Technol Tech Cardiothorac Vasc Surg.* 2017;12:e3–e5. DOI [10.1097/IML.0000000000000389](https://doi.org/10.1097/IML.0000000000000389).
5. Verma A, Cairns JA, Mitchell LB, et al. Focused update of the Canadian cardiovascular society guidelines for the management of atrial fibrillation. *Can J Cardiol.* 2014;30:1114–30. DOI [10.1016/j.cjca.2014.08.001](https://doi.org/10.1016/j.cjca.2014.08.001).