

THE BRITISH JOURNAL OF PSYCHIATRY

Volume 142

Published monthly

JUNE 1983

Founded in 1853 as the *Asylum Journal* and known as the *Journal of Mental Science*
from 1855 to 1963.

EDITOR

J. L. Crammer

ASSOCIATE EDITORS

Martin Roth Kenneth Rawnsley

ASSISTANT EDITORS

Sidney Crown
John Cutting
Gaius Davies
Hugh Freeman

Alan Kerr
Margaret Little
Julian Leff
Andrew C. Smith

Philip Snaith
William Spry
Peter Tyrer
Gregor Wilkinson

EDITORIAL MANAGEMENT

Jacqueline Yates

ASSISTANT FOR THE BULLETIN

Alison Campbell

Correspondence, manuscripts, books for review, for both the *Journal* and the *Bulletin* should be addressed to the Editor, 17 Belgrave Square, London SW1X 8PG (Tel 01-235 8857). See inside front cover for further instructions.

Advertising enquiries, correspondence and copy should be addressed to Mr. Peter T. Mell, Advertisement Manager, PTM Professional Publications Ltd, 282 High Street, Sutton, Surrey SM1 1PQ (Tel 01-642 0162 PBX).

Subscriptions for non-members of the College are payable directly to the printers, Headley Brothers Ltd, to whom all queries about missing or faulty copies should be addressed within six months of publication and who also supply on order Special Publications and Gaskell Books.

Annual subscription rates 1983 (12 issues post free)

Inland: Institutions £65.00; Individuals £55.00

Overseas: Institutions £90.00, US\$200.00; Individuals £75.00, US\$165.00

Single copies of the Journal, £6.00, US\$12.00 (post free).

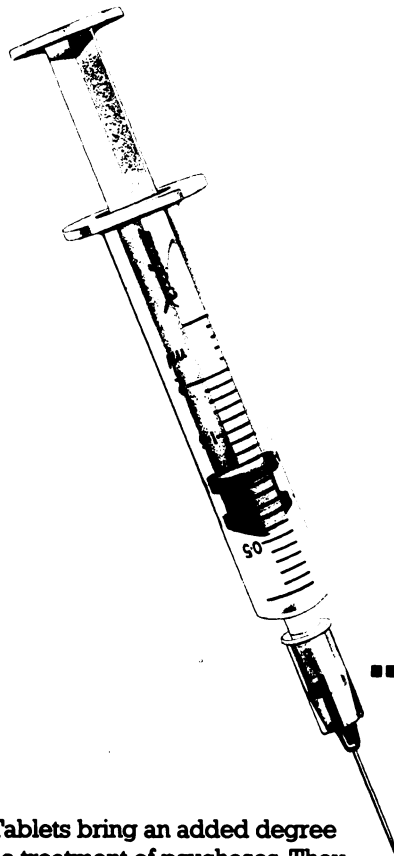
Bargain: Special American private subscription \$45.00 for 12 issues post free, to personal subscribers affirming the Journal is for their own use and naming the institution to which they belong and which already subscribes at the institutional rate. For residents of North America only.

USA Mailing Agents, Expeditors of the Printed Word Ltd., 527 Madison Avenue, Suite 1217, New York, NY 10022. 2nd Class postage paid at New York City, NY. (USPS No. 536-870).

Back issues published in 1982 may be purchased from Headley Brothers Ltd and all previous issues from William Dawson & Sons Ltd, Cannon House, Folkestone, Kent, England (Tel 0303 57421).

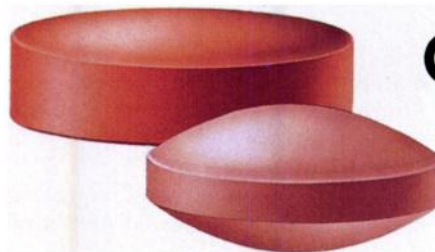
Printed by Headley Brothers Ltd, Ashford, Kent TN24 8HH, England (Tel 0233 23131).

© 1983 THE ROYAL COLLEGE OF PSYCHIATRISTS



The long...

...and the short of it



New Clopixol® Tablets bring an added degree of flexibility to the treatment of psychoses. They are indicated for the treatment of acute psychotic episodes where the rapid control of disruptive symptoms (agitation, suspicion, hostility) is required, and also for the maintenance treatment of chronic schizophrenia where depot injection therapy is refused or unsuitable.

- Rapid control of disruptive symptoms – peak serum levels attained within 4 hours.¹
- Profound antipsychotic effect.^{2,3,4}
- More effective than haloperidol in chronic schizophrenia.²
- Generally fewer side-effects than the phenothiazines.
- Smooth transfer from Clopixol Tablets to Clopixol Injection.

NEW

CLOPIXOL® TABLETS



References

1. Aaes-Jorgensen T. Acta Psychiat Scand 1981; 64: Suppl 294: 64. 2. Heikkila L et al. Acta Psychiat Scand 1981; 64: Suppl 294: 30. 3. Sechter D et al. Acta Psychiat Scand 1981; 64: Suppl 294: 20-24. 4. Gravem A, Bugge A. Acta Psychiat Scand 1981; 64: Suppl 294: 13-19.

Prescribing Information

Clopixol Tablets (cis(Z)-clopenthixol dihydrochloride). **Indications** Psychoses, especially in patients who are agitated, aggressive or hostile. **Dosage and Administration: Adults** The usual initial dose is 20-30 mg/day, increasing as necessary to a maximum of 150 mg/day, in divided doses. The usual maintenance dose in chronic schizophrenia is 20-50 mg/day in divided doses. **Children** Not recommended. **Side-effects** Extrapyramidal side-effects may occur and sometimes may require control by anti-Parkinson drugs. **Contraindications** Acute alcohol, barbiturate or opiate poisoning, intolerance to other neuroleptics. Pregnancy (relative). Use with caution in patients with Parkinsonism, severe arteriosclerosis, senile confusional states, serious renal, hepatic or cardiovascular disease. **Overdosage** Overdosage should be treated by gastric lavage. **Package Quantities and NHS Price (September 1982)** Bottles of 100 Clopixol Tablets 10 mg £7.50. Bottles of 100 Clopixol Tablets 25 mg £15.00. PL No. 0458/0028, 0029. PA No. 115/5/3.4.

Further information and data sheet available from: - Lundbeck Limited, Lundbeck House, Hastings Street, Luton, Beds. LU1 5BE. Tel. Luton 416565.

