

FROM THE AMERICAN SCHOOL OF CLASSICAL STUDIES AT ATHENS



## Philhellenism, Philanthropy, or Political Convenience? American Archaeology in Greece

Nine authors explore a complex web of political maneuvering, public service, and educational objectives. This critical history will be of interest to all who want to know more about the practice of archaeology by super-powers in Classical lands, or the role played by philanthropy in projects of nationalism.

*A special issue of HESPERIA edited by Jack L. Davis and Natalia Vogeikoff-Brogan.*

232 pp, 61 col and bw figs  
\$40 print + PDF eBook/\$20 PDF eBook only

TO ORDER: e-mail [areinhard@ascsa.org](mailto:areinhard@ascsa.org)  
[www.ascsa.edu.gr/publications/hesperia\\_new](http://www.ascsa.edu.gr/publications/hesperia_new)



# ANTIQUITY

## ARCHAEOLOGICAL PHOTOGRAPHY COMPETITION

Antiquity invites the submission of high-quality archaeological photographs for publication in the journal.

Two photographs will be selected and published each issue. A judging panel will decide the best photograph published each year and a cash prize of £500 will be awarded to the winner.

- Digital images only
- 135mm min width / 180mm max height
- Minimum 300ppi/dpi
- Short caption and technical details

Entries to: [assistant@antiquity.ac.uk](mailto:assistant@antiquity.ac.uk)

See <http://www.antiquity.ac.uk/photo/>  
for further details.

## Notes for contributors

*Antiquity* aims to report new archaeological research, method and issues of international significance in plain language to a broad academic and professional readership. The journal is published quarterly in March, June, September and December.

Submissions are invited in the following categories: Research (max. 5000 words), Method and Debate (each max. 3000 words). Word limits include all text, tables, references and figure captions.

*Antiquity* uses a secure and confidential online submission and peer-review system. Detailed help on how to submit is available both prior to submission and throughout the submission process. To submit a manuscript please visit our website at <http://antiquity.ac.uk/contribute/contribute.html> where you will find a link to the submission site and full **Instructions for authors.**

Wherever possible manuscripts should be submitted as a single Adobe PDF document containing all text, tables and figures but excluding any covering letter. If you cannot submit your manuscript as a PDF, you may submit separate text and graphics files. If your paper is accepted for publication, you will be asked to provide separate high-resolution, publication-quality graphics, in TIFF or EPS format. It is therefore best for the initial submission to create any graphics using applications that are capable of preparing acceptable TIFF or EPS formats. Resolutions must be 300dpi or higher and image dimensions should be either half-page width (65mm) or full-page width (135mm). The maximum acceptable height is 185mm. Maps and plans must include an accurate scale and north point.

As part of the submission process authors will be required to confirm that the substance of the content presented has not been published previously and is not currently being considered for publication elsewhere.

We prefer to receive submissions in English but can consider submissions in French, German, Italian and Spanish where submitting in English is not possible. (Accepted papers are translated free of charge and published in English.)

All submissions are considered by the Editor in the first instance. Suitable papers are peer-reviewed by a minimum of two experts. If you are unsure whether a paper is suitable for *Antiquity*, please contact the Editor prior to submission ([editor@antiquity.ac.uk](mailto:editor@antiquity.ac.uk)).

### **Project Gallery** (<http://antiquity.ac.uk/projgall/>)

The Project Gallery (max. 1000 words + 6 figures) is part of *Antiquity's* online Bulletin and is intended for the announcement, update or preliminary reports about projects and ideas of international status. The Project Gallery also welcomes contributions to archaeological historiography. Please note that the Editor will not accept reports about local or regional surveys, sites or artefacts unless of wider significance; articles of local and regional interest should be properly directed to the national records and journals of the country concerned. Project Gallery articles are not normally peer-reviewed but the Editor may seek external advice.

### **Books for review**

We welcome books for review on archaeology and associated research. Please send books to the Reviews Editor, Dr Robert Witcher, at *Antiquity*, Durham University, South Road, Durham DH1 3LE, UK (email: [reviews@antiquity.ac.uk](mailto:reviews@antiquity.ac.uk)).

## ANTIQUITY 2013 Subscription Order Form

### Contact Details

Name: .....

Delivery Address (include post/zip code and country) .....

.....

.....

Telephone: ..... Fax .....

Email: .....

**Premium:** printed and online version of the journal AND access to the electronic archive of previous issues back to 1927

**Combined:** printed and current online versions of the journal

**Print only:** printed version of the journal

**Online only:** online current version of the journal

### Journal Subscription

2013	Institutional					Individual				
	Tick box	UK £	VAT (see note)	US \$	€	Tick box	UK £	VAT (see note)	US \$	€
<b>Premium</b>	<input type="checkbox"/>	357	(+£50.74 VAT)	601	484	<input type="checkbox"/>	77	(+£8.24 VAT)	143	111
<b>Combined</b>	<input type="checkbox"/>	200	(+£19.40 VAT)	336	266	<input type="checkbox"/>	61	(+£5.04 VAT)	113	89
<b>Print only</b>	<input type="checkbox"/>	180	n/a	300	237	<input type="checkbox"/>	54	n/a	102	84
<b>Online only</b>	<input type="checkbox"/>	169	(+£33.80 VAT)	285	231	<input type="checkbox"/>	38	(+£7.60 VAT)	72	57
<i>For airmail delivery add</i>	<input type="checkbox"/>	28.20				<input type="checkbox"/>	28.20			

**Note:** VAT will be due on the online element of subscriptions from the UK and from non-registered subscribers elsewhere in the EU.

EU customers should provide their VAT number: .....

### Method of Payment

**One off payment for 2013 only by Credit Card** Card: Visa / MasterCard / Eurocard / Switch / Connect  
 Card No: .....  
 Valid from: ..... Expiry Date ..... Issue No: .....  
 Card holder's name (as it appears on card) .....  
 Card holder's address (if different to delivery) .....  
 Signature ..... Date .....

**Bank Transfer** Make payment to **Portland Customer Services**, NatWest Bank Plc, 25 High Street, Colchester CO1 1DG, UK. Account # 01863630 — Sort Code: 60-06-06  
 Please include full name and reason for transfer i.e. Antiquity subscription and supply us with details of your transfer, date of transaction, amount and the bank from which you are transferring.

**Direct Debit** Please send me a direct debit mandate form

**Proforma invoice** Please send me a proforma invoice

Discounts may be available for students and institutions in developing countries. Please apply to the Editor for details.

### Please send form and payment to:

**Portland Customer Services, Commerce Way, Colchester CO2 8HP, UK**

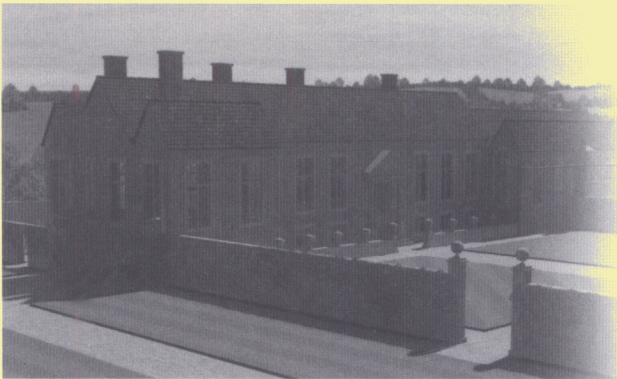
**Tel: +44 (0)1206 796351 Fax: +44(0)1206 799331**

**email: sales@portland-services.com www.portland-services.com**

<http://www.heritagetechnology.co.uk/>

# Heritage Technology Ltd

*Heritage Sector IT Specialists*



## 3D Visualisation

- ✔ Digital visualisation of objects, buildings & landscapes
- ✔ Photo-realistic, high quality historical reconstructions

- ✔ Services for visitor attractions, academia & commercial projects
- ✔ Individually tailored to fit **all** requirements & budgets
- ✔ Services also include web design & digital archaeological support



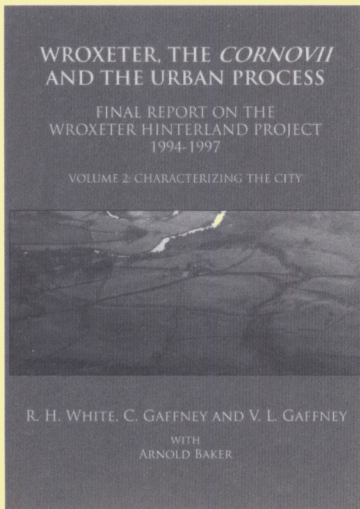
Heritage Technology specialises in creating highly realistic 3D visualisations from historical & archaeological data. Digital reconstruction is a proven technique in both academic & commercial archaeology for portraying often complex spatial & temporal data in an accessible and engaging way. Explore the possibilities at:

<http://www.heritagetechnology.co.uk>



# Archaeopress

Gordon House, 276 Banbury Road, Oxford OX2 7ED England Tel/Fax: +44 1865 311914  
e-mail: bar@archaeopress.com http://www.archaeopress.com



## **Wroxeter, the *Cornovii* and the Urban Process**

### **Volume 2: Characterizing the City**

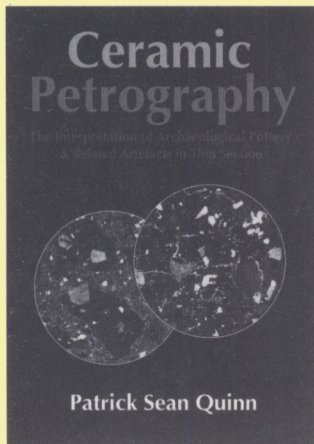
**Final Report of the Wroxeter Hinterland Project, 1994-1997**

by R. H. White, C. Gaffney and V. L. Gaffney with A. Baker

£15.50

ISBN 9781905739615. £15.50. xii+227 pages; with summaries in German and French. Illustrated throughout in colour and black and white; paperback

In the mid 1990s, the site of the Roman city of *Viroconium Cornoviorum* at Wroxeter, Shropshire, was subjected to one of the most intensive campaigns of geophysical survey ever carried out on a Roman town. The result was a complete plan of the city using magnetometry but also significant deployment of other technologies including resistance, GPR and more experimental techniques. Since that time, geophysical survey has continued intermittently, using the site as a geophysical laboratory. This volume reports on the archaeological interpretation of this work, marrying the extensive and nuanced geophysical data with a detailed analysis of the existing aerial photographic record largely created by Arnold Baker during the 1950s to 1980s. The resulting work is the first insula by insula description of all the visible buildings in the town, the first time that this has been attempted for a Romano-British town, and one of the few attempted anywhere in the Empire. The analysis has enabled a complete reinterpretation of the historical development of the town that links it to its surrounding hinterland and to wider concerns about Roman Urban development. The volume also contains detail of small-scale excavations that have been carried out since 1999 on the site, many in previously unexplored areas, and completes the publication of all outstanding archaeological work on the monument.



## **Ceramic Petrography:**

### **The Interpretation of Archaeological Pottery & Related Artefacts in Thin Section**

by Patrick Sean Quinn

£35.00

ISBN 9781905739592. 260 pages; colour throughout

Thin section ceramic petrography is a versatile interdisciplinary analytical tool for the characterization and interpretation of archaeological pottery and related artefacts, including ceramic building materials, refractories and plaster. Using over 200 colour photomicrographs of thin sections from a diverse range of artefacts, archaeological periods and geographic regions, this book illustrates the spectrum of compositional and microstructural phenomena that occur within ancient ceramics under the micro-scope and provides comprehensive guidelines for their study within archaeology. The book is structured according to the main steps involved in the analysis and interpretation of archaeological ceramic thin sections, including classification, characterization, the determination of provenance and the reconstruction of manufacturing technology. It can be used as a reference manual for microscope research as well as a course book for specialist training on thin section petrography and archaeological ceramic analysis.

## **B.A.R.**

### **British Archaeological Reports**

**For all Archaeopress BAR titles with short summaries go to [www.archaeopress.com](http://www.archaeopress.com)**

A selection of out of print titles is now available to purchase as pdf downloads from Archaeopress website

Sign up to our monthly ALERTS SERVICE via our above website homepage



BAR titles can be ordered from Hadrian Books, 122 Banbury Road, Oxford OX2 7BP, UK  
[www.hadrianbooks.co.uk](http://www.hadrianbooks.co.uk)