

# Gender Differences in Like-Sex Middle-Aged Twins: An Extended Network Analysis of Depressive Symptoms, Cognitive Functions and Leisure Activities

Daiyan Zhang<sup>1, 2</sup> & Maria Semkovska<sup>1</sup>

<sup>1</sup> DeFREE Research Cluster, Department of Psychology, University of Southern Denmark, Odense, Denmark

<sup>2</sup> Danish Twin Registry, Department of Public Health, University of Southern Denmark, Odense, Denmark

Both authors report no financial relationships with commercial interests

Correspondence concerning this article should be addressed to Maria Semkovska, Department of Psychology, University of Southern Denmark, Odense, Denmark, Campusvej 55, 5230 Odense M, e-mail: msemkovska@health.sdu.dk

## Abstract

**Background:** Depression affects twice as many women as men. Risk factors for depression certainly impact this difference, but their strong interconnectedness challenges the assessment of

This peer-reviewed article has been accepted for publication but not yet copyedited or typeset, and so may be subject to change during the production process. The article is considered published and may be cited using its DOI.

This is an Open Access article, distributed under the terms of the Creative Commons Attribution-NonCommercial-NoDerivatives licence (<http://creativecommons.org/licenses/by-nc-nd/4.0/>), which permits non-commercial re-use, distribution, and reproduction in any medium, provided the original work is unaltered and is properly cited. The written permission of Cambridge University Press must be obtained for commercial re-use or in order to create a derivative work.

standalone contributions. Network models allow the identification of systematic independent relationships between individual symptoms and risk factors. This study aimed to evaluate whether the extended networks of depressive symptoms, cognitive functions, and leisure activities in like-sex twins differ depending on gender or zygosity.

**Methods:** Twins, including 2,040 women (918 monozygotic and 1,122 dizygotic) and 1,712 men (730 monozygotic and 982 dizygotic), were selected from the Danish Twin Registry for having, along with their like-sex co-twin, completed measures of depressive symptoms, cognition, and leisure activities (physical, intellectual, and social). Networks models were estimated and compared at three levels: co-twins to each other within groups defined by gender and zygosity; monozygotic to dizygotic twins within the same gender, and between genders.

**Results:** No significant differences were observed when co-twins were compared to each other, regardless of the pair's zygosity or gender, nor when monozygotic twins were compared to dizygotic twins within gender. However, the gendered networks differed significantly in global strength, structure, and partial correlations between specific depressive symptom and risk factors, all indicating stronger connectedness in women relative to men.

**Conclusions:** Environmental factors appear to best explain between-gender network differences. Women's networks showed significantly stronger associations both among depressive symptoms, and between depressive symptoms and risk factors (i.e., decreased cognition and leisure activities). Longitudinal research is needed to determine the causality and directionality of these relationships.

**Keywords:** gender, network analysis, depressive symptoms, cognitive functions, leisure activities, monozygotic twins

## Introduction

Depression, a leading global burden of disease contributor [1] with 20% lifetime prevalence, affects twice as many women as men [2]. An initial epidemiological meta-analysis [3] suggested an absence of gender differences in the heritability for depression, though a recent updated review showed that the behavioural genetics methods used determine whether or not such differences are found [4]. Given the disorder's high heterogeneity, little evidence exists of single genetic or environmental causes explaining all depressive symptoms [5]. Genes certainly contribute to these causes, as monozygotic twins show higher concordance rates for depression diagnosis [3], while environmental factors are critical for triggering its polygenic liability [6,7]; namely the inherited predisposition to develop depression that is conferred by the joined action of several "vulnerability" genes. Besides gene-environment interactions, multiple intertwined aetiologies can explain the gender differences, including hormones, genetically determined physiological stress responsiveness and gender-associated environmental stress exposure [8]. Assessing concurrently these factors to determine their individual contributions is complex; however, it is generally accepted that they are directly expressed in people's cognitive abilities and daily functioning, which in turn are significant predictors of depression [9,10].

Cognitive dysfunction is a recognised feature of depression [11], both during an acute episode and following remission [12]. Individuals presenting with depressive symptoms engage less in physical, social and intellectual leisure activities [13], while participation in leisure activities is consistently associated with better cognitive function and a lower risk of cognitive decline [14–18]. Moreover, gender differences exist not only in depression prevalence, but also in leisure activity participation and in some cognitive functions. Socially, women tend to establish quicker strong cooperation with others, while men's cooperation levels increase progressively as the activity develops [19]. Women engage less than men in physical activities [20] and face more barriers to exercise [21]. Traditional female-gender role responsibilities, such as childcare and domestic chores, impact negatively on participation in physical exercise, and make prioritising one's health

more challenging [22–24]. Gender differences in cognitive function are generally non-significant, with the notable exceptions of women outperforming men in verbal fluency, and men outperforming women in 3D mental rotation [25].

Previous studies have rarely explored concomitantly the complex interactions among symptoms, cognitive functions and leisure activities, or evaluated the unique contribution of each depression risk factor independently from its shared associations with other predictors. One study [13] employed structural equation modelling to assess these interrelationships concurrently but aggregated multiple variables into single measures for each of the studied categories. Similarly, another study [26] totalled the performance on five different cognitive domains into a single factor, despite their distinct associations with depressive symptoms. For example, executive function correlates strongly with fatigue, but not with other depressive symptoms (e.g., indecisiveness, appetite changes) [27], while loneliness is associated with memory but not with orientation [28]. Reducing distinct phenomena to merged single factors prevents the identification of independent interrelations between specific symptoms and specific risk factors. Moreover, neither study examined the effect of gender on those complex associations, despite known gender differences on most of the studied variables.

Conceptualising the interactions between depressive symptoms and risk factors as a network allows to consider each element's individual contribution to the entire system without resorting to the oversimplification of summing up different factors into one. Specifically, when constructing a network where each depressive symptom and risk factor represents a network node, the links (network edges) between each pair of nodes can be studied while accounting for the remaining associations. Traditional models assuming that depressive symptoms are interchangeable representation of a common cause [5], or that cognitive functions stem from a latent single factor are currently challenged [29]. Conversely, network theory allows to analyse the complexity of specific interactions among individual symptoms and various risk factors, revealing patterns and connections that cannot be distinguished with traditional methods [30].

Recently, twin data have been modeled using network analyses to explore the heritability of cognitive abilities[29], anxiety [31], and depression [32], but again, known differences between women and men were not considered. We aimed to evaluate the gender effects on extended networks of depressive symptoms, cognitive functions and three types of leisure activities (intellectual, physical and social) using like-sex monozygotic (MZ) and dizygotic (DZ) twin pairs. This method allows, with a strong control for shared genetic liability for depression, to determine the most influential (central) nodes in a network and how symptoms and risk factors may interact to possibly explain the gender differences in depression expression. Two variables known to significantly influence both depressive symptoms and cognitive function – namely, age [33,34] and alcohol consumption [35] – were used as covariates. Specifically, the study first examined the differences between the two members of a twin pair within sub-groups defined by gender and zygosity (i.e., MZ women, DZ women, MZ men, DZ men). Secondly, the differences between MZ and DZ networks were assessed within each gender group. Finally, the extended networks of depressive symptoms of women and men were directly compared.

## Methods

### Study population

Participants were collected from two cohort studies of the Danish Twin Registry, the Middle Age Danish Twins (MADT) 2008 survey, and the Middle Age Danish Twins (MIDT) 2008-2011 survey years [36]. They assessed, respectively, 2,400 and 10,276 Danish twins born between 1931 and 1969. Participants self-reported their gender as part of the demographic data collection. Both studies utilised identical measures for depressive symptoms, cognitive functions, and leisure activities [36]. The following inclusion criteria were applied: (a) both twins of a pair participated, (b) the pair was like-sex (same gender), and (c) the pair's zygosity was clearly determined.

## Measures

The standardised battery of the MADT and MIDT studies [36] included nine depressive symptoms from the Cambridge Mental Disorders of the Elderly Examination [37], six neuropsychological tests to estimate cognitive functions, and a scale measuring the frequency of engagement in three types of leisure activities, eight intellectual, six physical and eight social. Age and alcohol consumption were included as covariates due to their established associations with other variables. See Supplementary Table S1 for all measures' scoring methods and corresponding node names. Descriptive statistics were computed separately for women and men. Categorical variables (e.g., zygosity, education, marital status, and work status) were analysed using Chi-square tests ( $\chi^2$ ). Independent samples t-tests were conducted to compare between genders for continuous variables.

## Network analysis

*Network estimation.* Gaussian Graphical Models (GGMs) with graphical Least Absolute Shrinkage and Selection Operator (Glasso) regularisation were used to estimate the undirected networks of the six nodes' categories – 9 depressive symptoms, 6 cognitive functions, 8 intellectual activities, 6 physical activities, 8 social activities, and 2 covariates. Glasso was applied with Extended Bayesian Information Criterion (EBIC) for model selection [38]. This method estimates 100 models with varying levels of sparsity. The final model is selected based on the lowest EBIC value, determined by hyperparameter gamma ( $\gamma$ ), we set at 0.5 to minimise the risk of including spurious edges. To meet GGM normality requirement, while optimising the original data preservation, nonparanormal transformations were used to normalise variables with absolute skew values  $>1$ . Networks were drawn by Cytoscape 3.10.2.

*Network centrality.* For each node, centrality measures for strength and expected influence (EI) were calculated with standardised z-scores for each independent network. Strength represents the sum of absolute values of the node's connections to neighboring nodes, while EI refers to the net sum, accounting for positive and negative values [39].

*The network stability* was quantified with the correlation stability coefficient (CS-coefficient). It represents the maximum number of cases that can be dropped to retain a centrality correlation of at least 0.7. CS-coefficient values above 0.25 indicate stable networks, although traditionally, values above 0.5 are preferable. Edge accuracy was estimated with bootstrapped 95% confidence intervals (CIs), with narrower CIs suggesting more reliable networks. Bootstrapped difference tests were also performed to evaluate if centrality and edge-weights were stable [38].

*The network comparison test (NCT)* with 1000 permutations [40] was used for all between-networks comparisons, using indices of global strength invariance (*S*) and maximum difference (*M*) of network invariance. Firstly, differences between co-twin pairs were examined within each of the following sub-groups obtained by crossing gender with zygosity: MZ women, DZ women, MZ men and DZ men. To mitigate randomness due to arbitrary assignment, we reassigned each of these datasets 1,000 times and obtained two averaged networks representing the independent networks of each co-twin [32]. For every reassignment iteration, the NCT evaluated differences in global strength and structure with *S* and *M* indices. The 1,000 *p*-values distribution of each index was used to identify significant differences among the reassignments. Secondly, MZ and DZ networks were compared within each gender group. Finally, overall differences between two genders were assessed.

## Results

### Participants

Applying the inclusion criteria to the merged MADT and MIDT databases led to the identification of 1,876 twin pairs ( $N=3,752$ ), consisting of 2,040 women (918 MZ and 1,122 DZ) and 1,712 men (730 MZ and 982 DZ). Table 1 presents the socio-demographic characteristics of the sample. Figure 1 illustrates the three-level sample's subdivisions as required by the network analysis design.

169 INSERT TABLE 1 and FIGURE 1 ABOUT HERE

---

171 **Network comparisons of co-twins within gender by zygosity sub-groups**

172 Networks were constructed and compared between co-twins within each zygosity-gender pair. All  
173 networks were stable. After the 1,000 reassignments, the  $p$ -values for the between-co-twins  
174 comparisons did not show any significant differences across all four groups in terms of global  
175 strength and network invariance, with all  $p$ -values  $>0.94$ , as shown in Supplementary Table S2. For  
176 MZ/DZ women, MZ/DZ men, see Supplementary Figure S1, S7, S13, S19 for networks, Figure S2,  
177 S8, S14, S20 for centrality, Figure S3-S6, S9-S12, S15-S18, S20-S24 and Table S3 for stability.

178 **Network comparisons of MZ and DZ within each gender**

179 After confirming the absence of significant differences between co-twins, sub-groups were merged  
180 to compare MZ to DZ networks within each gender, i.e., MZ women vs DZ women and MZ men vs  
181 DZ men. All networks were stable. In women, MZ and DZ networks were comparable in both  
182 global strength ( $S = 1.82$ ,  $p = 0.210$ ) and structure ( $M = 0.11$ ,  $p = 0.483$ ). Similarly, in men, MZ and  
183 DZ networks did not differ significantly neither in global strength ( $S = 1.11$ ,  $p = 0.441$ ), nor in  
184 structure ( $M = 0.16$ ,  $p = 0.227$ ), as shown in Supplementary Figure S27, S34 and Table S4. For MZ  
185 and DZ in each gender, see Supplementary Figures S25, S32 for networks, S26 and S33 for  
186 centrality, S28-S31, S35-S38 and Table S5 for stability.

187 **Network comparisons between genders**

188 *Networks' stability.* Given the lack of significant zygosity effects, the MZ and DZ samples were  
189 further merged to construct two networks for women and men (Figure 2). The networks were highly  
190 stable, with CS-coefficients values 0.75 (see Supplementary Figure S39-S42 and Table S6).

---

192 INSERT Figure 2 ABOUT HERE

---



*Nodes' centrality and edges.* See full results in Supplementary Figure S43 and Tables S7-S10. The gendered networks showed similar patterns in nodes' centrality which reflects the importance of nodes (Supplementary Figure S43). For both, the same depressive symptoms, *Sad* (strength<sub>women</sub> = 1.08, EI<sub>women</sub> = 1.03; strength<sub>men</sub> = 1.08, EI<sub>men</sub> = 1.07) and *HappyNow* (strength<sub>women</sub> = 1.03, EI<sub>women</sub> = 0.86; strength<sub>men</sub> = 0.92, EI<sub>men</sub> = 0.79), and the same physical activity *Exercised* (strength<sub>women</sub> = 1.05, EI<sub>women</sub> = 0.86; strength<sub>men</sub> = 1.02, EI<sub>men</sub> = 0.97), were among the top 5 most influential nodes. The latter also included intellectual leisure activities, that was going to the *Museum* (strength = 1.01; EI = 1.01) for women, or to the *Library* (strength = 0.99; EI = 0.81), and to *Courses* (strength = 0.96; EI = 0.94) for men. The most central cognitive function was *DelayedRecall* (strength = 1.04; EI = 0.64) for women and *WorkingMemory* (strength = 0.86; EI = 0.83) for men.

The two genders showed similar edges with the top 5 absolute partial correlation values. These concerned cognitive functions – *Learning-DelayedRecall* ( $pr_{\text{women}} = 0.55$ ;  $pr_{\text{men}} = 0.45$ ), *WorkMemo-AuditAtt* ( $pr_{\text{women}} = 0.33$ ;  $pr_{\text{men}} = 0.30$ ), social activities – *MeetTwin-PhoneTwin* ( $pr_{\text{women}} = 0.53$ ;  $pr_{\text{men}} = 0.54$ ), *Dinner-FriendsDinner* ( $pr_{\text{women}} = 0.33$ ;  $pr_{\text{men}} = 0.35$ ), and physical leisure activities, where the edge with the highest value was *Yoga-Exercised* for women ( $pr = 0.33$ ), and *Sport-Exercised* for men ( $pr = 0.42$ ). All these correlations were positive, indicating strong connectivity within the corresponding risk factor's individual nodes.

*NCT.* Figure 3 showed that the gendered networks were significantly different in both global strength ( $S = 1.87$ ,  $p = 0.022$ ) and structure ( $M = 0.14$ ,  $p = 0.009$ ). Table 2 lists all nodes with significantly different between-gender centrality values. All indicated stronger connectivity of the corresponding nodes in women.

---

INSERT FIGURE 3 AND TABLE 2 ABOUT HERE

---

When examining the edges connecting depressive symptoms with the remaining network nodes, 10 were found to be significant in women and only one in men. Table 3 details all edges involving depressive symptoms with significant between-gender differences. Non-significant edges within each gendered network are listed in Supplementary Tables S11-S12. Figures 1c and 1d visualise the gendered sub-networks centred with depressive symptoms and related risk factors to better illustrate where the core differences between women and men were concentrated. Two of these edges with significant differences concerned positive correlations between depressive symptoms. Specifically, women showed significantly stronger associations for *Lonely-WorthNothing* ( $pr_{\text{women}} = 0.151$ ,  $pr_{\text{men}} = 0.065$ ;  $p = 0.030$ ) and for *Tense-Outlook* ( $pr_{\text{women}} = 0.118$ ,  $pr_{\text{men}} = 0.019$ ;  $p = 0.009$ ). The remaining results concerned significantly stronger negative edges linking depressive symptoms with either cognitive functions or leisure activities. The only exception was the positive association *WriteStory-HappyNow*. Except Outlook-Courses, all these edges linking depressive symptoms with risk factors were null in men.

---

INSERT Table 3 ABOUT HERE

---

## Discussion

The study aimed to evaluate gender differences within and between like-sex co-twins. The observed networks were stable and without significant differences when co-twins were compared to each other, regardless of the pair's zygosity or gender. Given these similarities, samples were pooled so to compare MZ to DZ women, and MZ to DZ men, leading to non-significantly different networks. However, when comparing the gendered networks (all women vs all men), significant differences in global strength, global structure and local structure emerged. Specifically, women's networks were denser (more interconnected) and showed significantly stronger associations both within depressive

symptoms, and between depressive symptoms and risk factors (i.e., cognition and leisure activities). Traditional models compare MZ and DZ twins to determine the relative contribution of genetic and environmental factors to the observed differences in variances/covariance within twin pairs [41]. Similarly, the network comparison test evaluates the overall differences in interconnectivity between co-twins first, and between MZ and DZ twins second, in order to examine these contributions at the network level [32]. Previous research using network analyses in MZ and DZ twins has not considered gender effects [29,31,32] and focused on within-symptoms [31] or with-cognitive functions [42] analyses. Overall, our results suggest that between-gender differences in the extended networks of depressive symptoms and the studied risk factors may be predominantly environmentally determined.

The gendered networks' comparison revealed several significant differences. Among depressive symptoms, worthlessness and subjective tension were more central in women. Edges *worthlessness-loneliness* and *pessimistic outlook - subjective tension* were stronger in women. These results are consistent with both the established higher prevalence of depressive symptoms in women [2,8] and the network theory of psychopathology, postulating that more densely connected symptom networks are associated with a stronger predisposition to depression [30].

Moreover, the women's networks showed significantly stronger negative associations between depressive symptoms and physical or social leisure activities, including *worthlessness - frequency of calling family/friends*, *worthlessness - frequency of visiting family/friends for dinner*, and *subjective tension - strenuous sports engagement*. Subjective tension often indicates anxiety, which is closely related to a pessimistic view of the future [43]. This relationship is further evidenced by women being more likely to engage in rumination, a cognitive process that can perpetuate negative thinking and hinder the ability to maintain a positive outlook [43]. Socialisation and cultural expectations play a significant role in shaping how genders perceive their futures. Women are often socialised to prioritise the quality of relationships and emotional connectedness, which, can lead to feelings of worthlessness and pessimism regarding future outlook [44]. This is

further supported by the higher links' strength of *worthlessness-loneliness, frequency of feeling happy - frequency of calling family/friends*, and *sadness-associations* in women relative to men. Research indicates that women exhibit greater emotional awareness and regulation skills, which can lead to a more nuanced view of their social world and own future [45]. However, this emotional intelligence may also result in heightened sensitivity to relationships' quality and life's uncertainties, potentially contributing to a more pessimistic outlook [45]. Social and cultural factors, including stereotyped expectations, could also underlie the stronger association between *subjective tension-strenuous sports engagement* in women. Body image concerns and traditional female domestic responsibilities can increase tension and impede physical activity prioritisation [21], while the latter can prevent tension release.

Other connections linking depressive symptoms and leisure activities that showed significantly stronger, negative correlations in women relative to the absence of such correlations (zero values) in men, involved *pessimistic outlook - frequency of biking*, and *current unhappiness*, with intellectual activities. Regardless of gender, depression is linked to lower participation in physical and other leisure activities [13]. Moreover, women and men differ in how much they engage in physical activities, with women reporting more obstacles to exercising and less control over their exercise choices [21]. Interestingly the only association that was significantly stronger in men concerned higher pessimistic outlook with lower engagement with courses. These results suggest that engaging in physical, intellectual, or social activities may be associated with fewer depressive symptoms, especially in women. However, our cross-sectional design precludes determining if this engagement directly intervenes upon reducing depression. Nevertheless, the value of participation in leisure activities relative to depressive symptoms appears particularly relevant for women. Studies suggest that women may derive greater emotional and psychological benefits from social interactions and recreational activities, which could be due to the relational nature of women's socialisation [46]. Gender differences in coping strategies also shape how individuals respond to stressors. Research indicates that women are more likely to engage in

295 emotion-focused coping strategies, including seeking social support and participating in activities  
296 that promote emotional well-being [46]. This difference in coping styles might explain the reasons  
297 behind the stronger associations between leisure activities' engagement and depressive symptoms in  
298 women relative to men.

299       Within both women's and men's networks, cognitive functions ranked among the most  
300 central elements and were strongly interconnected. However, few between-genders differences  
301 involved cognition. Specifically, *delayed verbal memory* was more central in women, whereas  
302 *pessimistic outlook* was more strongly connected negatively to both *delayed verbal memory* and  
303 *verbal fluency* in women. The associations between depressive symptoms and cognitive functions  
304 are known to be bidirectional [47], but in midlife, cognition does not predict future depressive  
305 symptoms, while depressive symptoms do predict lower future cognitive function, concerning  
306 especially memory [47,48]. Moreover, longitudinal research indicates that baseline memory is not  
307 associated with depression at follow-up in women aged over 65 [48]. Thus, our results may suggest,  
308 in women, a pessimistic outlook could be the key bridge node through which depressive symptoms  
309 exercise their deleterious effect over long-term memory. However, this hypothesis needs to be  
310 verified by longitudinal research. Importantly, leisure activities appear overall more central to the  
311 extended networks of depressive symptoms than cognitive functions. Withdrawal from leisure  
312 activities is well-documented in depressed individuals [49]. Despite being cross-sectional, our  
313 findings allow to speculate that this association may emerge prior to a depression diagnosis, and be  
314 more prominent in women, supporting the hypothesis that intellectual, physical, and social leisure  
315 activities may serve as protective factors against depression [49,50]. Nevertheless, future  
316 longitudinal studies are necessary to determine if such causal relationships exist.

317       The study has the following limitations. As research participants were middle-aged Danish  
318 twins, results are not necessarily generalisable to other ethnicities, age-groups, or broader  
319 populations. Moreover, contemporaneous networks based on GGMs do not possess causal inference  
320 capabilities. Therefore, significant associations should be interpreted with caution. The *HardWork*

item primarily referred to family/work hard physical duties rather than leisure; nonetheless, we have retained it within the physical activities' category to determine overall physical engagement. This inclusion did not significantly affect the results, as *HardWork* remained in the periphery of all networks. In future research, methodology such as longitudinal network analysis coupled with Bayesian network reasoning could be used to evaluate the directionality in observed significant edges, and thus further clarify gender differences. Our study did not evaluate the specific genetic, shared and nonshared environmental portions of the studied variables' variance. Future research could therefore apply traditional twin-design structural equation modelling (SEM) [41], alongside the network analyses, to determine the exact genetic and environmental contributions to the observed results. Our study did not include an assessment of lifestyle factors, which encompass a broad range of daily behaviours, such as smoking, substance consumption, and nutritional intake [51, 52]. Both leisure and lifestyle factors represent essential aspects of daily life, and can act as risk factors for depression. Network models of the relationship between lifestyle factors and depression have already been studied [51–53]. Future research should integrate both lifestyle factors and leisure activities for a more thorough assessment of their combined impact on depression.

Combining network analyses with a twin design enables the evaluation of the independent associations between depressive symptoms and risk factors, and the study of how gender may affect these relationships. This approach contributes towards current intervention science efforts towards the identification of the diverse mechanisms leading to depression, and the associated personalised targets for prevention [54]. Although the present novel findings require replication in other representative samples, they do indicate that personalised prevention should take gender into consideration and integrate the promotion of relevant leisure activities.

## **Funding**

This work was supported by a Lundbeck Foundation Ascending Investigator Award 2022 to Maria Semkovska, which had no further role in the study design, data collection, analyses, report writing or the decision to submit this paper for publication.

## **Acknowledgement**

The authors are thankful to Jakob Mortensen and Lars Hvidberg from the Danish Twin Research Center for their technical support with server maintenance, software version management, and ensuring the stability of the computational infrastructure necessary for this research, and to Lisbeth Aagaard Larsen for advice on legal and ethical registry data management.

## **Conflict of interest**

Both authors report no financial relationships with commercial interests.

## **Data availability**

In compliance with Danish and EU regulations, the transfer and dissemination of individual-level data from Danish registries require prior authorization from the Danish Data Protection Agency. Current local data protection policies prohibit the sharing of individual-level data in public databases. Data request can be directed through <https://www.sdu.dk/en/forskning/dtr>.

## **REFERENCES**

- [1] Vollset SE, Ababneh HS, Abate YH, Abbafati C, Abbasgholizadeh R, Abbasian M, et al. Burden of disease scenarios for 204 countries and territories, 2022–2050: a forecasting analysis for the Global Burden of Disease Study 2021. *The Lancet* 2024;403:2204–56. [https://doi.org/10.1016/S0140-6736\(24\)00685-8](https://doi.org/10.1016/S0140-6736(24)00685-8).

- 365 [2] Salk RH, Hyde JS, Abramson LY. Gender differences in depression in representative  
366 national samples: Meta-analyses of diagnoses and symptoms. *Psychol Bull* 2017;143:783–822.  
367 <https://doi.org/10.1037/bul0000102>.
- 368 [3] Sullivan PF, Neale MC, Kendler KS. Genetic Epidemiology of Major Depression:  
369 Review and Meta-Analysis. *Am J Psychiatry* 2000;157:1552–62.  
370 <https://doi.org/10.1176/appi.ajp.157.10.1552>.
- 371 [4] Zhao L, Han G, Zhao Y, Jin Y, Ge T, Yang W, et al. Gender Differences in  
372 Depression: Evidence From Genetics. *Front Genet* 2020;11:562316.  
373 <https://doi.org/10.3389/fgene.2020.562316>.
- 374 [5] Fried EI, Flake JK, Robinaugh DJ. Revisiting the theoretical and methodological  
375 foundations of depression measurement. *Nat Rev Psychol* 2022;1:358–68.  
376 <https://doi.org/10.1038/s44159-022-00050-2>.
- 377 [6] Gariépy G, Honkaniemi H, Quesnel-Vallée A. Social support and protection from  
378 depression: systematic review of current findings in Western countries. *Br J Psychiatry*  
379 2016;209:284–93. <https://doi.org/10.1192/bjp.bp.115.169094>.
- 380 [7] Mullins N, Power RA, Fisher HL, Hanscombe KB, Euesden J, Iniesta R, et al.  
381 Polygenic interactions with environmental adversity in the aetiology of major depressive  
382 disorder. *Psychol Med* 2016;46:759–70. <https://doi.org/10.1017/S0033291715002172>.
- 383 [8] Kuehner C. Why is depression more common among women than among men?  
384 *Lancet Psychiatry* 2017;4:146–58. [https://doi.org/10.1016/S2215-0366\(16\)30263-2](https://doi.org/10.1016/S2215-0366(16)30263-2).
- 385 [9] Simons CJP, Jacobs N, Derom C, Thiery E, Jolles J, Van Os J, et al. Cognition as  
386 predictor of current and follow-up depressive symptoms in the general population. *Acta*  
387 *Psychiatr Scand* 2009;120:45–52. <https://doi.org/10.1111/j.1600-0447.2008.01339.x>.
- 388 [10] Vicent-Gil M, Keymer-Gausset A, Serra-Blasco M, Carceller-Sindreu M, De Diego-  
389 Adeliño J, Trujols J, et al. Cognitive predictors of illness course at 12 months after first-episode



- 390 of depression. *Eur Neuropsychopharmacol* 2018;28:529–37.  
 391 <https://doi.org/10.1016/j.euroneuro.2018.02.001>.
- 392 [11] Rock PL, Roiser JP, Riedel WJ, Blackwell AD. Cognitive impairment in depression: a  
 393 systematic review and meta-analysis. *Psychol Med* 2014;44:2029–40.  
 394 <https://doi.org/10.1017/S0033291713002535>.
- 395 [12] Semkowska M, Quinlivan L, O’Grady T, Johnson R, Collins A, O’Connor J, et al.  
 396 Cognitive function following a major depressive episode: a systematic review and meta-  
 397 analysis. *Lancet Psychiatry* 2019;6:851–61. [https://doi.org/10.1016/S2215-0366\(19\)30291-3](https://doi.org/10.1016/S2215-0366(19)30291-3).
- 398 [13] Sharifian N, Gu Y, Manly JJ, Schupf N, Mayeux R, Brickman AM, et al. Linking  
 399 depressive symptoms and cognitive functioning: The mediating role of leisure activity.  
 400 *Neuropsychology* 2020;34:107–15. <https://doi.org/10.1037/neu0000595>.
- 401 [14] Ihle A, Fagot D, Vallet F, Ballhausen N, Mella N, Baeriswyl M, et al. Cross-lagged  
 402 relation of leisure activity participation to Trail Making Test performance 6 years later:  
 403 Differential patterns in old age and very old age. *Neuropsychology* 2019;33:234–44.  
 404 <https://doi.org/10.1037/neu0000497>.
- 405 [15] Wang H-X, Jin Y, Hendrie HC, Liang C, Yang L, Cheng Y, et al. Late Life Leisure  
 406 Activities and Risk of Cognitive Decline. *J Gerontol A Biol Sci Med Sci* 2013;68:205–13.  
 407 <https://doi.org/10.1093/gerona/gls153>.
- 408 [16] Bielak AAM, Anstey KJ, Christensen H, Windsor TD. Activity engagement is related  
 409 to level, but not change in cognitive ability across adulthood. *Psychol Aging* 2012;27:219–28.  
 410 <https://doi.org/10.1037/a0024667>.
- 411 [17] Vaughan L, Erickson KI, Espeland MA, Smith JC, Tindle HA, Rapp SR. Concurrent  
 412 and Longitudinal Relationships Between Cognitive Activity, Cognitive Performance, and Brain  
 413 Volume in Older Adult Women. *J Gerontol B Psychol Sci Soc Sci* 2014;69:826–36.  
 414 <https://doi.org/10.1093/geronb/gbu109>.

- 415 [18] Lifshitz-Vahav H, Shrira A, Bodner E. The reciprocal relationship between  
416 participation in leisure activities and cognitive functioning: the moderating effect of self-rated  
417 literacy level. *Aging Ment Health* 2017;21:524–31.  
418 <https://doi.org/10.1080/13607863.2015.1124838>.
- 419 [19] Peshkovskaya A, Myagkov M, Babkina T, Lukinova E. Do women socialize better?  
420 Evidence from a study on sociality effects on gender differences in cooperative behavior 2017.
- 421 [20] Guthold R, Stevens GA, Riley LM, Bull FC. Worldwide trends in insufficient physical  
422 activity from 2001 to 2016: a pooled analysis of 358 population-based surveys with 1·9 million  
423 participants. *Lancet Glob Health* 2018;6:e1077–86. [https://doi.org/10.1016/S2214-](https://doi.org/10.1016/S2214-109X(18)30357-7)  
424 [109X\(18\)30357-7](https://doi.org/10.1016/S2214-109X(18)30357-7).
- 425 [21] Vasudevan A, Ford E. Motivational Factors and Barriers Towards Initiating and  
426 Maintaining Strength Training in Women: a Systematic Review and Meta-synthesis. *Prev Sci*  
427 2022;23:674–95. <https://doi.org/10.1007/s11121-021-01328-2>.
- 428 [22] Verhoef M, Love EJ, Rose SA. Women's Social Roles and Their Exercise  
429 Participation. *Women Health* 1993;19:15–29. [https://doi.org/10.1300/J013v19n04\\_02](https://doi.org/10.1300/J013v19n04_02).
- 430 [23] Brown WJ, Mishra G, Lee C, Bauman A. Leisure Time Physical Activity in  
431 Australian Women: Relationship with Well Being and Symptoms. *Res Q Exerc Sport*  
432 2000;71:206–16. <https://doi.org/10.1080/02701367.2000.10608901>.
- 433 [24] Brown PR, Brown WJ, Miller YD, Hansen V. Perceived Constraints and Social  
434 Support for Active Leisure Among Mothers With Young Children. *Leis Sci* 2001;23:131–44.  
435 <https://doi.org/10.1080/014904001316896837>.
- 436 [25] Jäncke L. Sex/gender differences in cognition, neurophysiology, and neuroanatomy.  
437 *F1000Research* 2018;7:805. <https://doi.org/10.12688/f1000research.13917.1>.
- 438 [26] Sharifian N, Sol K, Zaheed AB, Morris EP, Palms JD, Martino AG, et al. Depressive  
439 Symptoms, Leisure Activity Engagement, and Global Cognition in Non-Hispanic Black and

- 440 White Older Adults. *J Gerontol Ser B* 2022;77:2137–47.  
 441 <https://doi.org/10.1093/geronb/gbab153>.
- 442 [27] Kraft B, Bø R, Jonassen R, Heeren A, Ulset VS, Stiles TC, et al. The association  
 443 between depression symptoms and reduced executive functioning is primarily linked by fatigue.  
 444 *Psychiatry Res Commun* 2023;3:100120. <https://doi.org/10.1016/j.psycom.2023.100120>.
- 445 [28] Sun H-L, Chen P, Bai W, Zhang Q, Sha S, Su Z, et al. Depressive Symptoms and  
 446 Cognitive Function in Older Adults: A Cross-Lagged Network Analysis. *Depress Anxiety*  
 447 2024;2024:6166775.
- 448 [29] Knyspel J, Plomin R. Comparing factor and network models of cognitive abilities  
 449 using twin data. *Intelligence* 2024;104:101833. <https://doi.org/10.1016/j.intell.2024.101833>.
- 450 [30] Cramer AOJ, Van Borkulo CD, Giltay EJ, Van Der Maas HLJ, Kendler KS, Scheffer  
 451 M, et al. Major Depression as a Complex Dynamic System. *PLOS ONE* 2016;11:e0167490.  
 452 <https://doi.org/10.1371/journal.pone.0167490>.
- 453 [31] Olatunji BO, Christian C, Strachan E, Levinson CA. Central and Peripheral  
 454 Symptoms in Network Analysis are Differentially Heritable A Twin Study of Anxious Misery. *J*  
 455 *Affect Disord* 2020;274:986–94. <https://doi.org/10.1016/j.jad.2020.05.045>.
- 456 [32] Moroń M, Mengel-From J, Zhang D, Hjelmberg J, Semkovska M. Depressive  
 457 symptoms, cognitive functions and daily activities: An extended network analysis in  
 458 monozygotic and dizygotic twins. *J Affect Disord* 2025;368:398–409.  
 459 <https://doi.org/10.1016/j.jad.2024.09.089>.
- 460 [33] Stordal E, Mykletun A, Dahl AA. The association between age and depression in the  
 461 general population: a multivariate examination. *Acta Psychiatr Scand* 2003;107:132–41.  
 462 <https://doi.org/10.1034/j.1600-0447.2003.02056.x>.
- 463 [34] Mirowsky J, Ross CE. Age and Depression. *J Health Soc Behav* 1992;33:187.  
 464 <https://doi.org/10.2307/2137349>.

- 465 [35] Sullivan LE, Fiellin DA, O'Connor PG. The prevalence and impact of alcohol  
466 problems in major depression: A systematic review. *Am J Med* 2005;118:330–41.  
467 <https://doi.org/10.1016/j.amjmed.2005.01.007>.
- 468 [36] Pedersen DA, Larsen LA, Nygaard M, Mengel-From J, McGue M, Dalgård C, et al.  
469 The Danish Twin Registry: An Updated Overview. *Twin Res Hum Genet* 2019;22:499–507.  
470 <https://doi.org/10.1017/thg.2019.72>.
- 471 [37] Roth M, Tym E, Mountjoy CQ, Huppert FA, Hendrie H, Verma S, et al. CAMDEX: A  
472 Standardised Instrument for the Diagnosis of Mental Disorder in the Elderly with Special  
473 Reference to the Early Detection of Dementia. *Br J Psychiatry* 1986;149:698–709.  
474 <https://doi.org/10.1192/bjp.149.6.698>.
- 475 [38] Epskamp S, Fried EI. A tutorial on regularized partial correlation networks. *Psychol*  
476 *Methods* 2018;23:617–34. <https://doi.org/10.1037/met0000167>.
- 477 [39] Epskamp S, Borsboom D, Fried EI. Estimating psychological networks and their  
478 accuracy: A tutorial paper. *Behav Res Methods* 2018;50:195–212.  
479 <https://doi.org/10.3758/s13428-017-0862-1>.
- 480 [40] Van Borkulo CD, Van Bork R, Boschloo L, Kossakowski JJ, Tio P, Schoevers RA, et  
481 al. Comparing network structures on three aspects: A permutation test. *Psychol Methods*  
482 2023;28:1273–85. <https://doi.org/10.1037/met0000476>.
- 483 [41] Rijdsdijk FV. Analytic approaches to twin data using structural equation models. *Brief*  
484 *Bioinform* 2002;3:119–33. <https://doi.org/10.1093/bib/3.2.119>.
- 485 [42] Knyspel J, Plomin R. Comparing factor and network models of cognitive abilities  
486 using twin data. *Intelligence* 2024;104:101833. <https://doi.org/10.1016/j.intell.2024.101833>.
- 487 [43] Altemus M, Sarvaiya N, Neill Epperson C. Sex differences in anxiety and depression  
488 clinical perspectives. *Front Neuroendocrinol* 2014;35:320–30.  
489 <https://doi.org/10.1016/j.yfrne.2014.05.004>.

- 490 [44] Weisberg YJ, DeYoung CG, Hirsh JB. Gender Differences in Personality across the  
491 Ten Aspects of the Big Five. *Front Psychol* 2011;2. <https://doi.org/10.3389/fpsyg.2011.00178>.
- 492 [45] Sweeny K, Andrews SE. Mapping individual differences in the experience of a  
493 waiting period. *J Pers Soc Psychol* 2014;106:1015–30. <https://doi.org/10.1037/a0036031>.
- 494 [46] Ryba MM, Hopko DR. Gender Differences in Depression: Assessing Mediational  
495 Effects of Overt Behaviors and Environmental Reward through Daily Diary Monitoring.  
496 *Depress Res Treat* 2012;2012:1–9. <https://doi.org/10.1155/2012/865679>.
- 497 [47] Semkovska M. Cognitive function and neurocognitive deficits in depression.  
498 *Neurosci. Depress.*, Elsevier; 2021, p. 361–71. [https://doi.org/10.1016/B978-0-12-817935-](https://doi.org/10.1016/B978-0-12-817935-2.00021-0)  
499 [2.00021-0](https://doi.org/10.1016/B978-0-12-817935-2.00021-0).
- 500 [48] Hopper S, Grady A, Best JR, Stinchcombe A. Bidirectional associations between  
501 memory and depression moderated by sex and age: Findings from the CLSA. *Arch Gerontol*  
502 *Geriatr* 2024;116:105154. <https://doi.org/10.1016/j.archger.2023.105154>.
- 503 [49] Fancourt D, Tymoszyk U. Cultural engagement and incident depression in older  
504 adults: evidence from the English Longitudinal Study of Ageing. *Br J Psychiatry*  
505 2019;214:225–9. <https://doi.org/10.1192/bjp.2018.267>.
- 506 [50] Bone JK, Bu F, Fluharty ME, Paul E, Sonke JK, Fancourt D. Engagement in leisure  
507 activities and depression in older adults in the United States: Longitudinal evidence from the  
508 Health and Retirement Study. *Soc Sci Med* 2022;294:114703.  
509 <https://doi.org/10.1016/j.socscimed.2022.114703>.
- 510 [51] Anderson AR, Kurz AS, Szabo YZ, McGuire AP, Frankfurt SB. Exploring the  
511 longitudinal clustering of lifestyle behaviors, social determinants of health, and depression. *J*  
512 *Health Psychol* 2022;27:2922–35. <https://doi.org/10.1177/13591053211072685>.
- 513 [52] Scariot PPM, Garbuio ALP, Pelosi AC, Pedroso LC, Silva LAH, Berigo SA, et al.  
514 Using the Complex Network Model to Associate Nutritional, Psychological, and Physical

Parameters and Aspects of Sleep with Depression Symptoms. J Clin Med 2024;13:6743.

<https://doi.org/10.3390/jcm13226743>.

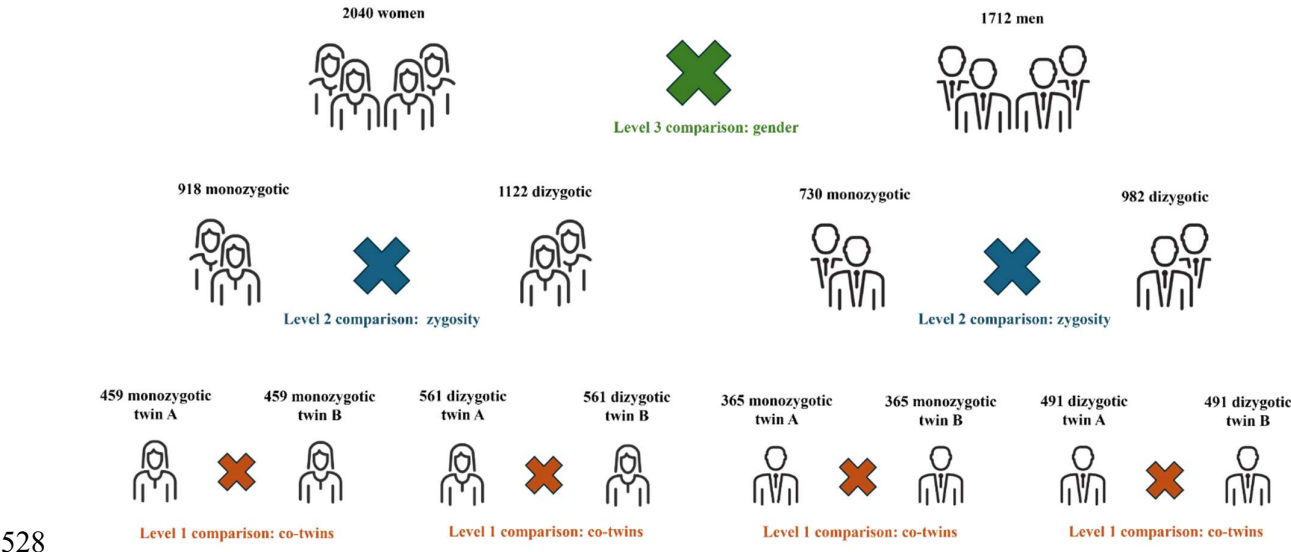
[53] Wang S-B, Xu W-Q, Gao L-J, Tan W-Y, Zheng H-R, Hou C-L, et al. Bridge connection between depression and anxiety symptoms and lifestyles in Chinese residents from a network perspective. Front Psychiatry 2023;14:1104841.

<https://doi.org/10.3389/fpsy.2023.1104841>.

[54] Ciarrochi J. The coming revolution in intervention science: from standardized protocols to personalized processes. World Psychiatry 2021;20:385–6.

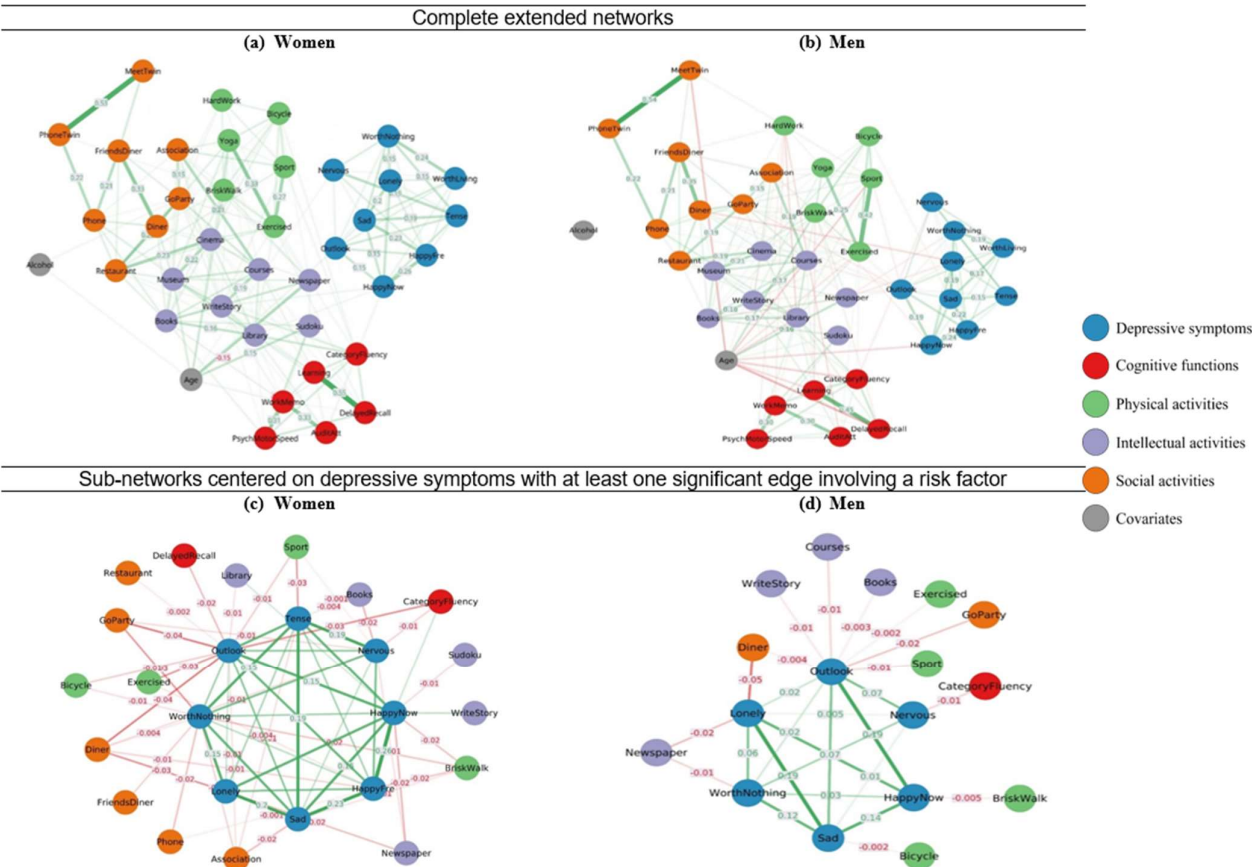
<https://doi.org/10.1002/wps.20892>.

526 **FIGURE 1. Diagram of the network comparisons conducted at three levels of analysis: (1)**  
527 **between co-twins of the same zygosity, (2) between zygosity types, and (3) between genders.**



529

530 **FIGURE 2. Women's and men's GGM networks of depressive symptoms, cognitive functions,**  
531 **frequency of leisure activities and covariates.**

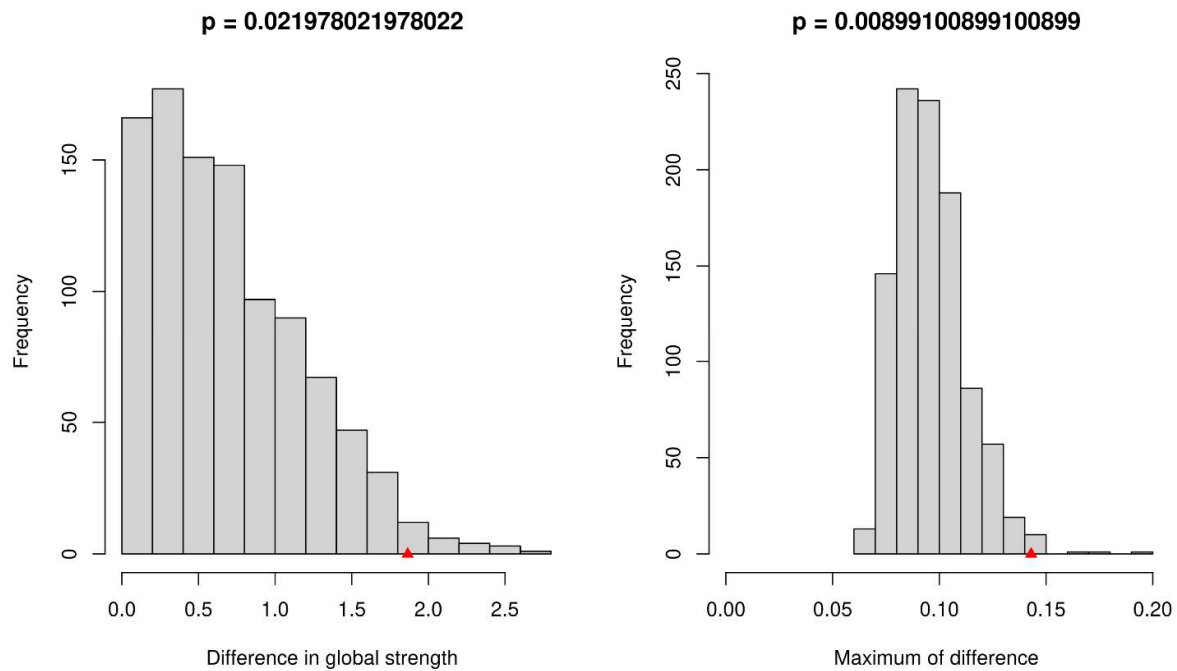


533 Green lines represent positive partial correlations, and red lines represent negative partial  
534 correlations.

535



536 **FIGURE 3. The network comparison test's distribution of the 1000 permutations of global**  
 537 **strength and maximum difference indices in women and men.** The red marker indicates the  
 538 observed test statistic within the permutation test, highlighting its position to assess statistical  
 539 significance.



540

541

542

543 **TABLE 1. Descriptive statistics of the sample and between-gender differences**

Variable	Women (n=2040)		Men (n=1712)		Statistic <sup>a</sup>	p-value
<b>Zygosity</b>					$\chi^2 (1) = 2.01$	0.294
MZ	918		730			
DZ	1122		982			
<b>Education</b>					$\chi^2 (6) = 117.00$	0.000***
Master	139		209			
Bachelor	600		340			
Tertiary	88		77			
Post-secondary non-tertiary	119		35			
Upper secondary	566		609			
Lower secondary	283		212			
Missing values	245		230			
<b>Marital status</b>					$\chi^2 (5) = 55.42$	0.000***
Married/cohabitating	1533		1430			
Divorce	220		118			
Separated	33		15			
Widow	125		43			
Never been married/cohabitating	116		93			
Missing values	13		13			
<b>Work status</b>					$\chi^2 (7) = 218.04$	0.000***
Full-time	849		1012			
Part-time	379		90			
Early retired	167		108			
Retired because of special reasons	112		48			
Retired	376		349			
Sick for >14 days	31		13			
Other	101		78			
Missing values	25		14			
<b>Age<sup>b</sup></b>	<b>Mean</b>	<b>SD</b>	<b>Mean</b>	<b>SD</b>	<b>t (3750)</b>	<b>p-value</b>
	56.76	9.84	59.24	9.55	-7.81	0.000***
<b>Units of weekly alcohol consumption</b>	<b>Mean</b>	<b>SD</b>	<b>Mean</b>	<b>SD</b>	<b>t (3750)</b>	<b>p-value</b>
	5.45	5.76	10.73	9.98	-20.07	0.000***
<b>Depressive symptoms</b>	<b>Mean</b>	<b>SD</b>	<b>Mean</b>	<b>SD</b>	<b>t<sup>a</sup> (3750)</b>	<b>p-value</b>
HappyNow <sup>c</sup>	1.12	0.33	1.10	0.31	1.73	0.000***
HappyFre <sup>c</sup>	1.23	0.45	1.16	0.40	4.69	0.084
Lonely	1.39	0.55	1.24	0.45	8.50	0.000***
Tense	1.23	0.45	1.14	0.37	6.28	0.000***
Nervous	1.09	0.29	1.05	0.22	4.89	0.000***

Sad	1.16	0.39	1.07	0.25	7.99	0.000***
WorthNothing	1.28	0.49	1.25	0.46	1.89	0.000***
Outlook	3.15	1.22	2.90	1.35	4.80	0.0582
WorthLiving	1.06	0.23	1.03	0.18	3.22	0.001**
<b>Cognitive functions</b>	<b>Mean</b>	<b>SD</b>	<b>Mean</b>	<b>SD</b>	<b><i>t</i><sup>a</sup> (3750)</b>	<b><i>p</i>-value</b>
Learning	6.37	1.68	5.64	1.55	12.19	0.000***
AuditAtt	5.64	1.20	5.72	1.30	-1.89	0.059
WorkMemo	4.39	1.32	4.49	1.47	-1.73	0.083
CategoryFluency	24.84	6.34	23.76	6.27	3.50	0.000***
DelayedRecall	6.36	2.43	5.01	2.15	16.10	0.000***
PsychMotorSpeed	30.55	10.25	30.11	11.54	2.66	0.008**
<b>Intellectual activities</b>	<b>Mean</b>	<b>SD</b>	<b>Mean</b>	<b>SD</b>	<b><i>t</i><sup>a</sup> (3750)</b>	<b><i>p</i>-value</b>
Museum	1.98	0.53	1.96	0.54	2.75	0.006**
Library	3.65	1.16	3.77	1.24	-4.66	0.000***
Sudoku	2.94	1.39	2.40	1.41	13.10	0.000***
Books	3.72	1.15	3.48	1.15	6.82	0.000***
Courses	2.13	0.70	2.02	0.67	4.70	0.000***
WriteStory	1.93	1.16	1.86	1.17	1.49	0.136
Cinema	2.15	0.51	2.06	0.50	4.69	0.000***
Newspaper	4.40	0.88	4.59	0.74	-4.85	0.000***
<b>Physical activities</b>	<b>Mean</b>	<b>SD</b>	<b>Mean</b>	<b>SD</b>	<b><i>t</i><sup>a</sup> (3750)</b>	<b><i>p</i>-value</b>
Exercised	3.15	1.22	2.90	1.35	4.80	0.000***
BriskWalk	3.42	1.13	3.05	1.24	11.13	0.000***
Bicycle	2.98	1.31	2.94	1.28	0.88	0.379
Yoga	2.68	1.36	2.17	1.37	11.61	0.000***
HardWork	2.91	1.23	3.11	1.18	-5.28	0.000***
Sport	1.96	1.21	2.13	1.27	-5.45	0.000***
<b>Social activities</b>	<b>Mean</b>	<b>SD</b>	<b>Mean</b>	<b>SD</b>	<b><i>t</i><sup>a</sup> (3750)</b>	<b><i>p</i>-value</b>
GoParty	2.70	0.66	2.65	0.64	2.01	0.044*
Restaurant	2.44	0.60	2.36	0.56	3.58	0.000***
Phone	4.18	0.68	3.86	0.77	12.98	0.000***
Diner	2.62	0.60	2.50	0.60	6.40	0.000***
FriendsDiner	2.89	0.65	2.77	0.65	5.52	0.000***
Association	2.32	0.92	2.49	0.97	-5.48	0.000***
MeetTwin	4.75	0.92	4.55	0.96	5.46	0.000***
PhoneTwin	5.47	1.04	4.78	1.11	18.72	0.000***

Note. <sup>a</sup> controlled for age and alcohol consumption

<sup>b</sup> Age range: women, 40.28-79.53; men, 40.29-79.93

<sup>c</sup> Reverse coded

\* $p < 0.05$ , \*\* $p < 0.01$ , \*\*\* $p < 0.001$ .

549

550 **TABLE 2. Nodes with significant differences in strength centrality between women and men**

<b>Strength</b>	<b>Women</b>	<b>Men</b>	<b><i>p</i>-value</b>	<b>Node category</b>
WorthNothing	0.9465153	0.6203046	0.009**	Depressive symptom
Tense	0.8696782	0.6016601	0.009**	Depressive symptom
Yoga	0.7413204	0.4734702	0.003**	Physical activity
Museum	1.0094376	0.7608950	0.012*	Intellectual activity
Newspaper	0.6299685	0.3673111	0.007**	Intellectual activity
Restaurant	0.9653388	0.7509232	0.004**	Social activity
DelayedRecall	1.0370145	0.7964581	0.002**	Cognitive function

551 Note. \* $p < 0.05$ , \*\* $p < 0.01$ , \*\*\* $p < 0.001$ 

552

**TABLE 3. Between-gender comparisons on edges with significant differences involving at least one depressive symptom**

Edge	<i>pr</i> women	<i>pr</i> men	<i>p</i> -value	Category of the second node
Lonely-WorthNothing	0.1506603	0.0648693	0.030*	Depressive symptom
Tense-Outlook	0.1180386	0.0194005	0.009**	Depressive symptom
Outlook-Courses	0.0000000	-0.0124933	0.034*	Intellectual activities
HappyNow-WriteStory	0.0251031	0.0000000	0.009**	Intellectual activities
Outlook-Bicycle	-0.0139321	0.0000000	0.046*	Physical activities
Tense-Sport	-0.0285701	0.0000000	0.002**	Physical activities
HappyNow-Sudoku	-0.0074014	0.0000000	0.002**	Intellectual activities
HappyNow-Newspaper	-0.0221540	0.0000000	0.013*	Intellectual activities
HappyFre-Phone	-0.0009168	0.0000000	0.017*	Social activities
WorthNothing-Phone	-0.0170763	0.0000000	0.000***	Social activities
WorthNothing-FriendsDiner	-0.0111974	0.0000000	0.034*	Social activities
Sad-Association	-0.0185778	0.0000000	0.024*	Social activities
Outlook-CategoryFluency	-0.0336071	0.0000000	0.034*	Cognitive functions
Outlook-DelayedRecall	-0.0183782	0.0000000	0.016*	Cognitive functions

*Note.* *pr*, partial correlation

\**p* < 0.05, \*\**p* < 0.01, \*\*\**p* < 0.001.