



Regular Research

Pupillary response in reward processing in adults with major depressive disorder in remission

Mona Guath¹ , Charlotte Willfors^{2,3}, Hanna Björlin Avdic⁴, Ann Nordgren^{2,3} and Johan Lundin Kleberg^{2,4}

¹Uppsala University, Uppsala, Sweden, ²Department of Molecular Medicine and Surgery, Center for Molecular Medicine, Karolinska Institute, Stockholm, Sweden, ³Department of Clinical Genetics, Karolinska University Hospital, Stockholm, Sweden and ⁴Centre for Psychiatry Research, Department of Clinical Neuroscience, Karolinska Institute, Stockholm Health Care Services, Region Stockholm, Stockholm, Sweden

Abstract

Objective: Major depressive disorder (MDD) is associated with impaired reward processing and reward learning. The literature is inconclusive regarding whether these impairments persist after remission. The current study examined reward processing during a probabilistic learning task in individuals in remission from MDD ($n = 19$) and never depressed healthy controls ($n = 31$) matched for age and sex. The outcome measures were pupil dilation (an indirect index of noradrenergic activity and arousal) and computational modeling parameters. **Method:** Participants completed two versions (facial/nonfacial feedback) of probabilistic reward learning task with changing contingencies. Pupil dilation was measured with a corneal reflection eye tracker. The hypotheses and analysis plan were preregistered. **Result:** Healthy controls had larger pupil dilation following losses than gains ($p < .001$), whereas no significant difference between outcomes was found in individuals with a history of MDD, resulting in an interaction between group and outcome ($\beta = 0.81$, $SE = 0.34$, $t = 2.37$, $p = .018$). The rMDD group also achieved lower mean score at the last trial ($t[46.77] = 2.12$, $p = .040$) as well as a smaller proportion of correct choices ($t[46.70] = 2.09$, $p = .041$) compared with healthy controls. **Conclusion:** Impaired reward processing may persist after remission from MDD and could constitute a latent risk factor for relapse. Measuring pupil dilation in a reward learning task is a promising method for identifying reward processing abnormalities linked to MDD. The task is simple and noninvasive, which makes it feasible for clinical research.

Keywords: pupil dilation; computational psychiatry; probabilistic reward learning; major depressive disorder (MDD) in remission; reinforcement learning; biomarker

(Received 25 September 2020; final revision 19 January 2022; accepted 11 March 2022; First Published online 12 May 2022)

Introduction

Major depressive disorder (MDD) is the most common mental health condition worldwide. It is highly disabling and associated with a wide range of negative outcomes including suicide, low occupational achievement, and other forms of psychopathology (Bernaras et al., 2019). Treatments for MDD remain only partially effective, with rates of clinical improvement around 50% (Cuijpers et al., 2014; Fournier et al., 2010). Even after successful treatment, the risk of relapse is high, with 50–80% experiencing additional depressive episodes during their life time (Borcusa & Iacono, 2007; Holmes et al., 2018).

A core symptom of MDD is *anhedonia*, or a reduced ability to experience pleasure and positive affect. Symptoms of *anhedonia* are often treatment resistant and may even increase in severity with standard pharmacological treatments, e.g. (Craske et al., 2016). Behavioral and neurophysiological studies have shown that MDD, and anhedonia in particular, is linked to atypical processing of rewards (Cooper et al., 2018). Previous studies have documented reward processing impairments in MDD. However, the literature is inconsistent about to which extent these impairments reflect acute

MDD symptoms and to whether they constitute vulnerability markers that are not state-dependent. Specifically, whether they extend to currently asymptomatic individuals at elevated risk such as patients in remission (rMDD) or relatives of individuals with MDD (Admon & Pizzagalli, 2015; Cléry-Melin et al., 2018). A large body of research has examined the role of dopamine (DA) in reward processing, both in healthy individuals (Schultz, 2007) and in MDD (Admon & Pizzagalli, 2015; Cléry-Melin et al., 2018). However, recent studies have shown that reward processing and decision making in healthy individuals are also closely linked to the locus coeruleus-noradrenergic (LC-NE) system (Braem et al., 2011; Van Slooten et al., 2018). This research has primarily used pupil dilation, an index of arousal, modulated by activity in the LC-NE and cholinergic systems (Samuels & Szabadi, 2008).

So far, pupil dilation and LC-NE arousal have not been examined during reward learning in relation to rMDD. Research addressing this gap in the literature could be informative about the neural mechanisms underlying altered reward processing in MDD. Recently, Schneider et al. (2020) examined pupillary responses during reward anticipation in currently depressed

Corresponding author: Mona Guath, email: mona.guath@psyk.uu.se

Cite this article: Guath M., Willfors C., Björlin Avdic H., Nordgren A., & Kleberg J.L. (2023) Pupillary response in reward processing in adults with major depressive disorder in remission. *Journal of the International Neuropsychological Society*, 29: 306–315, <https://doi.org/10.1017/S1355617722000224>

Copyright © INS. Published by Cambridge University Press, 2022. This is an Open Access article, distributed under the terms of the Creative Commons Attribution licence (<https://creativecommons.org/licenses/by/4.0/>), which permits unrestricted re-use, distribution, and reproduction in any medium, provided the original work is properly cited.

individuals. Although no group differences were found between depressed and healthy individuals, blunted pupillary responses during reward anticipation were strongly correlated with the level of depressive symptoms.

A small number of previous studies have examined pupil dilation in rMDD, although not in the context of reward learning tasks. Two of these studies reported reduced pupil dilation to negative words in patients with MDD in remission, compared to nonremitters or healthy controls (Siegle et al., 2011; Steidtmann et al., 2010). Pupil dilation has also been examined as a longitudinal predictor of MDD recurrence. Kudinova et al. (2016) found that reduced pupil dilation to images of sad faces predicted recurrence of MDD during a 2-year follow-up period in women with a history of rMDD. When analyzing responses to angry faces, the authors found evidence for a quadratic relationship, with both blunted and enhanced reactivity predicting recurrence of MDD.

The aim of the present study was to compare reinforcement learning and pupillary indices of reward processing in currently euthymic individuals with a history of MDD and in never depressed healthy controls. The background to this research question is introduced in the following sections.

Reward processing in MDD

In healthy individuals, reward processing is linked to a group of interacting brain mechanisms including the ventral striatum and the medial frontal cortex (Admon & Pizzagalli, 2015; Le Heron et al., 2018; Schultz, 2007). Behaviorally, reward processing can be divided into several subprocesses including expectation of reward (“wanting”), the consumption of the reward (“liking”), and learning of reward contingencies (Der-Avakian & Markou, 2012; Rømer Thomsen et al., 2015). Importantly, shared reward processing mechanisms have been found for a wide range of rewards, including money, food and drink, and symbolic rewards, such as the number of points gained in a game (Levy & Glimcher, 2012; Schultz, 2007). On a behavioral level, individuals with ongoing MDD display deficiency across all three stages of reward processing (Admon & Pizzagalli, 2015; Cléry-Melin et al., 2018). Consistent with this, atypical brain responses in regions linked to reward processing have been observed in patients with MDD, including reduced activation in the ventral striatum and the anterior cingulate cortex (ACC; Chentsova-Dutton & Hanley, 2010; Wacker et al., 2009). One research area that has begun to unravel the link between reward processing and psychopathology is computational psychiatry, which applies, for example, reinforcement learning models that capture the internal learning and evaluation processes in a person. Reinforcement learning models can be applied to reward-related decision making in uncertain and volatile environments, arguably providing ecologically valid measures of reward processing in everyday life (Huys et al., 2016).

Computational modeling studies have documented a range of abnormalities in reward processing in MDD. For example, individuals with MDD show less exploration than healthy peers during reward learning (Cella et al., 2010; Huys et al., 2013), specifically, they deviate significantly more from an optimal model (Blanco et al., 2013). Further, there is research indicating that the central feature in decision making in anhedonic patients is linked to the motivational aspects of reward behavior (Treadway & Zald, 2011). The results echo findings indicating that MDD are less willing to expend effort on rewards, less skilled at discovering the underlying task characteristics (Treadway & Zald, 2011), and display less efficient learning in a probabilistic response task

(Pizzagalli et al., 2008). Importantly, individuals with MDD show learning impairments regardless of outcome value (win/loss) and environment (reward/punishment) in volatile, probabilistic tasks (Gagne et al., 2020).

Reward processing as a risk marker for MDD

Recent research suggests that reward abnormalities are not only seen in symptomatic individuals, but may also persist after remission (Pechtel et al., 2013; Weinberg & Shankman, 2017; Whitton et al., 2016), and may be present in nonaffected relatives of patients with MDD (Gotlib et al., 2010). If this is correct, abnormal reward processing could be a trait-like and heritable vulnerability factor that increases the risk for MDD. However, the literature is not consistent. Two studies using event-related potentials (ERPs) reported blunted responses to rewards (Weinberg & Shankman, 2017; Whitton et al., 2016). Similarly, behavioral indices of reduced reward responsiveness in rMDD were found by Pechtel et al. (2013) using a probabilistic reward learning task. In contrast to these findings, one study reported similar affective responses (indicated by subjective ratings) to rewards in individuals with rMDD and controls without a history of MDD, whereas both groups differed from currently depressed individuals (McFarland & Klein, 2009). One study using functional magnetic resonance imaging (fMRI) reported normalized activity in frontostriatal brain regions associated with reward processing after successful psychological treatment (Dichter et al., 2009). Surprisingly, one study (Ubl et al., 2015) reported enhanced neural responses to rewards rather than the expected blunted activity in the amygdala and hippocampus in individuals with rMDD compared to healthy controls. To sum up, further research is needed to understand the nature and extent of reward processing atypicalities in rMDD.

Pupil dilation as an index of reward processing and decision making

Pupil dilation increases during processing of motivationally salient, novel, or cognitively demanding stimuli and is closely linked to arousal and activity in the brain's LC-NE and cholinergic systems (Kleberg et al., 2019, 2020; Samuels & Szabadi, 2008). The LC-NE system interacts with brain areas implicated in aberrant reward processing in MDD such as the ACC and the amygdala (Aston-Jones & Cohen, 2005; Samuels & Szabadi, 2008). Typically, pupil dilation is induced by both positive and negative stimuli (e.g., both rewards and losses; Laeng et al., 2012). Recent studies have also shown that pupil dilation may map onto specific reinforcement learning processes such as the degree of exploration and rate of learning (Manohar & Husain, 2015; Van Slooten et al., 2018) and the uncertainty of the environment (Nassar et al., 2012). Taken together, this suggests that disrupted processing of rewards in MDD may be indexed by altered pupil dilation. However, pupil dilation during reward processing has not been examined in individuals with MDD or rMDD. Burkhouse et al. (2016) recently reported that adolescents with ongoing MDD as well as rMDD showed increased pupil dilation to emotional faces compared to healthy controls. This study, though, did not examine reward processing specifically.

Preregistration

The analysis plan and hypotheses were preregistered in the Open Science Framework (link: <https://osf.io/tk4ac/>).

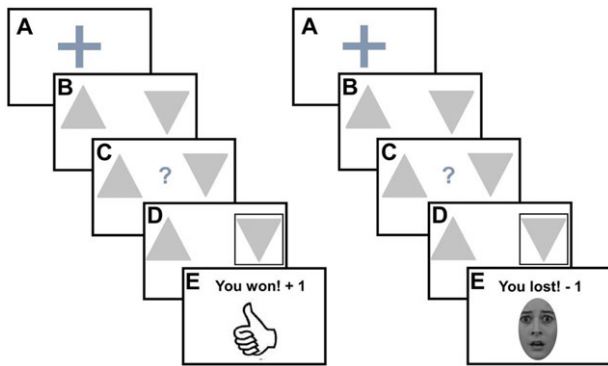


Figure 1. Overview of the experiment. Left: Nonfacial feedback condition. Right: Facial feedback condition. (a) A fixation cross was presented for 1.5 s followed by (b) presentation of the stimuli for during a random interval ranging between 0.2 and 1 s, after which participants chose one of the stimuli. (c) Stimuli remained on screen for 1.5 s (expectation period), during which the chosen stimulus was marked by a rectangle. (d) Feedback was presented for 2 s together with a stylized thumb (left) or a face (right).

Research questions and hypotheses

In the present study, we investigated pupil dilation in relation to reinforcement learning processes in a probabilistic learning task in an rMDD and a healthy control group. We hypothesized the following group differences:

1. Blunted pupillary reactivity to *losses* and *gains* in the rMDD group
2. Blunted pupillary reactivity in *expectation* of gains and losses (e.g., after a choice has been made, but before the outcome has been presented).
3. Lower learning rate (α) in the rMDD group.
4. Less exploration (higher β values) in the rMDD group.

Method

Experimental paradigm

The experimental paradigm is shown in Figure 1. In the experimental task, participants chose repeatedly between two different stimuli. Choosing one of the stimuli was associated with high probability of winning a point (85%), but also with a low probability of losing a point (15%). The other stimulus has the reverse probabilities. Feedback learning was therefore needed to successfully master the task. The contingencies changed five times during the course of the experiment (after 15 trials), meaning that a change of strategy was needed for optimal performance. Participants completed 75 trials, with changing contingencies after each 15th trials. Each trial began with a fixation cross presented for 1.5 s, followed by two stimuli presented to the left and right during a random interval ranging between 0.2 and 1 s, after which participants were instructed to make a choice by a key press when a question mark (“?”) appeared on the screen. Each stimulus covered approximately 5.25° of the visual field vertically and horizontally and was presented at 5.5° eccentricity from the center of the screen. Following the key press, a 1.5 s interval (the expectation period) followed during which the stimuli remained on screen and the chosen stimulus was marked by a rectangle. Subsequently, the outcome was presented (*the feedback period*) during 2 s. Two versions of the task were completed in randomized order. In the *facial feedback condition*, a loss is indicated by an angry face and a win by a

happy face. In the *nonfacial feedback condition*, a loss is indicated by a stylized hand with the thumb pointing downward, and a win by the same hand with the thumb pointing upwards. Feedback stimuli covered approximately 6.18° of the visual field horizontally and 3.9° vertically. Positive and negative feedback stimuli were matched for luminance within each condition using the SHINE toolbox (Willenbockel et al., 2010) implemented in MATLAB (Mathworks, Inc.), but stimuli were not matched across conditions. Participants started the experiment with 100 points.

Participants

Participants were recruited from a database of individuals expressing their interest to participate in research administered by the Karolinska Institute. Exclusion criteria were the presence of any current psychiatric condition (including MDD) or substance abuse. Participants were informed about these exclusion criteria in written form before signing up, and subsequently prescreened before the experimental session. In total, 50 individuals agreed to participate and were tested (no participant fulfilled the exclusion criteria). After recruitment, all participants were interviewed for current and lifetime history of mental health conditions according to diagnostic criteria in the DSM-5 (American Psychiatric Association, 2013) by experienced clinical psychologists using the Mini International Neuropsychiatric Interview (MINI; Sheehan et al., 1998). MINI is a semi-structured clinical interview for mental disorders, which is validated for identifying MDD and other mental health conditions when used by trained clinicians (Lecrubier et al., 1997; Sheehan et al., 1998). Participants were included in the rMDD group if the assessment indicated that they had fulfilled DSM-5 criteria for one or more MDD episodes during any time point in their lifetime regardless of whether they had received treatment and/or a diagnosis by a professional. The assessment was not complemented by medical records.

Based on the interview, 19 individuals were characterized as having a history of MDD (henceforth the rMDD), while 31 did not have a life time history of MDD or other major psychiatric disorders (healthy control). All individuals in the rMDD group were asymptomatic at the time of testing according to the clinical interview and had been in full remission for at least 4 months. One individual in the rMDD group had a previous diagnosis of generalized anxiety disorder (GAD). No other individual had any previous or ongoing psychiatric disorder. Further, the two groups were matched for age and gender proportion. Demographic information along with p -values for gender proportions, age differences, response times, and proportion of interpolated samples are shown in Table 1. As can be seen, groups did not differ in median response times or the proportion of interpolated samples in the pupil dilation analysis. Due to a technical error, eight individuals were missing data from the facial feedback condition, and ten individuals were missing data from the nonfacial condition. Four individuals in the rMDD group were on stable psychotropic medication (see Table 1). Exclusion of these participants did not change any of the results, and they were therefore retained. Power analyses using the R package *simr* (Green & MacLeod, 2016) indicated that the study had power above 80% to detect fixed effects explaining 5% or more of the total variance at an alpha level of .05, given the number of trials, and assuming a range of possible random effects variances.

Design

The design was a 2 x 2 mixed factorial, with rMDD as between-subjects factor and stimulus (face/no face) as within-subjects factor.

Table 1. Descriptive statistics for demographic background, type of medication, response time, and proportion of interpolated samples for each group (rMDD and healthy controls) and condition (face/no face). Significance tests are provided for response time (Wilcoxon rank test), proportion of interpolated samples, and mean number of fixations feedback interval (*t* tests for the latter two variables)

	rMDD (<i>n</i> = 19)	Healthy controls (<i>n</i> = 31)	<i>p</i> -values
Gender (F/M)	11/8	15/16	$\chi^2(1) = .04, p = .85$
Age	<i>M</i> = 34.2 (<i>SD</i> = 10.9)	<i>M</i> = 34.1 (<i>SD</i> = 11.9)	<i>t</i> (37.3) = - 0.1, <i>p</i> = .90
Mean no MDD episodes	<i>M</i> = 2.4 (<i>SD</i> = 2.2)	-	
Medication			
SSRI	2	0	
MAO-inhibitors	1	0	
Lamotrigin	1	0	
Insulin	0	2	
Hormonal contraceptives	0	3	
Response time			
Face condition	<i>Mdn</i> = 0.6 (<i>IQR</i> = 0.4)	<i>Mdn</i> = 0.5 (<i>IQR</i> = 0.3)	<i>Z</i> = 0.51, <i>p</i> = .61 [†]
No face condition	<i>Mdn</i> = 0.5 (<i>IQR</i> = 0.3)	<i>Mdn</i> = 0.6 (<i>IQR</i> = 0.2)	<i>Z</i> = 0.12, <i>p</i> = .90 [†]
Proportion interpolated samples			
Face condition	<i>M</i> = 9.7 (<i>SD</i> = 1.1)	<i>M</i> = 9.9 (<i>SD</i> = 1.0)	<i>t</i> (35) = 0.66, <i>p</i> = .52 [‡]
No face condition	<i>M</i> = 9.15 (<i>SD</i> = 2.54)	<i>M</i> = 9.93 (<i>SD</i> = 2.11)	<i>t</i> (39) = 0.17, <i>p</i> = .87 [‡]
Mean number of fixations feedback interval			
Face condition	<i>M</i> = 4.1 (<i>SD</i> = 0.9)	<i>M</i> = 3.9 (<i>SD</i> = 1.2)	<i>t</i> (35) = 0.43, <i>p</i> = .67
No face condition	<i>M</i> = 3.6 (<i>SD</i> = 1.0)	<i>M</i> = 4.1 (<i>SD</i> = 1.0)	<i>t</i> (39) = 1.67, <i>p</i> = .11
Average Euclidean distance from centre of the screen (° of visual field)			
Face condition	<i>M</i> = 1.88 (<i>SD</i> = 0.55)	<i>M</i> = 1.58 (<i>SD</i> = 0.56)	<i>t</i> (35) = 1.60, <i>p</i> = .12
No face condition	<i>M</i> = 2.07 (<i>SD</i> = 0.60)	<i>M</i> = 2.10 (<i>SD</i> = 0.72)	<i>t</i> (39) = 0.13, <i>p</i> = .89

[†]Based on *n* = 37, see participants. [‡]Based on *n* = 41, see participants.

Recording and processing of eye tracking data

Eye tracking data were recorded using a Tobii X-120 corneal reflection eye tracker (Tobii Inc, Danderyd, Sweden), which samples gaze at 120 HZ and pupil size at 40 HZ. Data were recorded using the Tobii MATLAB SDK, and stimuli were presented in MATLAB using PsychToolbox (Kleiner et al., 2007) for MATLAB (Mathworks, Inc). Participants were asked to look at the screen during the entire experiment. No head fixation was used.

Raw data were processed using custom scripts written in MATLAB. The pupil data were filtered according to procedures described in an earlier publication from our group (Kleberg et al., 2019). The pupil size of the left and right eye was averaged. Gaps in the data shorter than 150 ms (for example blinks or movement artefacts) were replaced through linear interpolation, and the data were subsequently filtered by a moving median filter with a window corresponding to 100 ms. Previous studies have shown that corneal reflection eye trackers can both under- and overestimate pupil size when the distance between gaze position and the center of the screen increases (Brisson et al., 2013; Hayes & Petrov, 2016). We tried to minimize gaze position artefacts by presenting stimuli at a short distance from the centre of the screen and counterbalancing the horizontal position of the stimulus associated with a higher probability of being reinforced (see Experimental Paradigm). On average, 89.6% (*SD* = 9.9%) of the valid recorded gaze samples were within the area covering the stimuli. As can be seen in Table 1, no group differences were found in average Euclidean distance from the center of the screen. A post hoc analysis (see Supplementary materials) showed a very weak relation (average *r* = -.07, *SD* = 0.11) between Euclidean distance from the center of the screen and pupil size.

The average proportions of interpolated samples per participant and condition are shown in Table 1. As can be seen, no group differences were found (all *p* > .5). For a detailed description of the preprocessing of the eye-tracking data, we refer to the Supplementary materials.

Computational modeling of behavioral data

We fitted behavioral data with computational models for two-armed bandits. Each participant's data in each contingency was fit to five different models in order to assess what model best captured the participants' behavior. In essence, two different versions of two models were compared, as well as a random response model. One version departed from the idea that participants applied a simple heuristic, win-stay-lose-shift, that is, staying with an option if you win and shift if you lose. In our version, we also assumed that participants switched away from the rewarding action with a certain probability. The other version departed from the idea that participants take the previous outcomes into account and learn the long-term value of choosing an action, the Q-learning model. The winning model was the Q-learning model (Watkins & Dayan, 1992), a variant of the Rescorla Wagner model. For computational details, model comparisons, and parameter recovery, we refer to the Supplementary materials. The winning Q-learning model has two free parameters: learning rate (α) ranging from 0 to 1 and determining the degree to which expected values are updated according to the recent outcome and exploration rate β ranging from 0 to ∞ , determining the balance between exploration and exploitation.

Statistical analyses

For all the models with pupillary response as dependent variable, we excluded trials where the response was 3 < or > 3 *SDs* from the individual mean, resulting in 48 participants, which were included in all analyses. For the analyses containing alpha and beta, we excluded the no-face contingency for one participant who were choosing the same alternative throughout all trials in that contingency, resulting in 49 participants. Due to a software problem, data from the face contingency were lost for eight participants and from the nonfacial condition for ten participants. For this reason, we double-checked all analyses including stimulus with data only

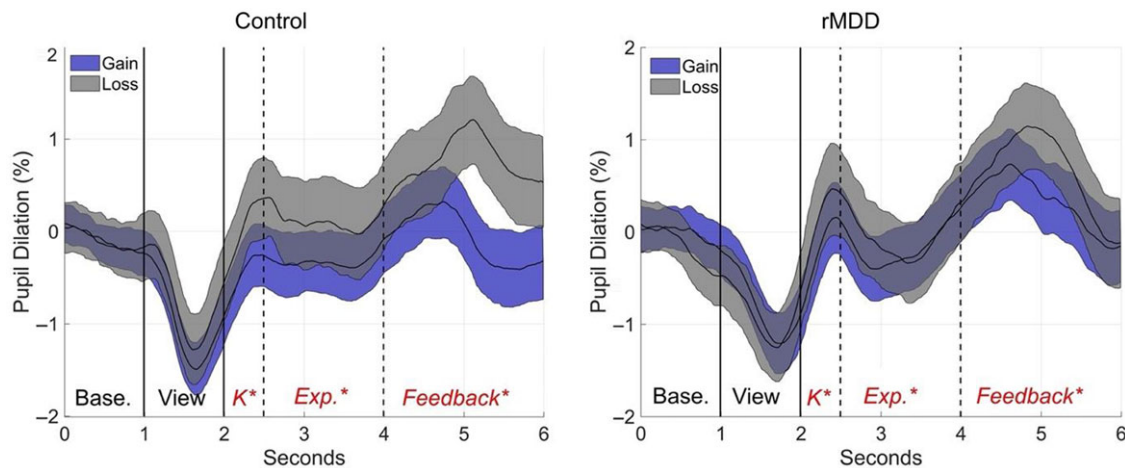


Figure 2. Pupil dilation in the healthy control group (left) and rMDD group (right) during gain and loss trials. Black lines show means values. Colored blue and gray areas cover 95% confidence interval. Red lines indicate significant between-condition differences at $p < .005$. Base = baseline (fixation cross); view = stimuli were shown for 1 s before a choice was made; K = keypress (dotted line indicates median response time); exp = expectation. Stimuli remained on screen before feedback was presented. Feedback = presentation of feedback (gain, loss).

containing participants who had done both contingencies. We used two types of models: (i) mixed linear models for pupillary response, which allowed us to capture the variance for each participant and include all trials for each participant and (ii) Wilcoxon signed-rank tests for alpha and beta values, since they were not normally distributed. We departed from Bates et al.'s recommendations for model comparison of mixed linear models (Bates et al., 2015). First, we specified three intercept models (for each outcome variable) with different complexity of the random effects. Next, we specified two models with different complexity of the fixed effects using the random effects structure from the winning model in step one. The decision criterion was maximum likelihood estimate. For model comparison details, we refer to the Appendix, Tables A2–A3.

Ethical approval

The study protocol was approved by the regional ethics committee of Stockholm, Sweden (DNR: 2018/1218-31, 2019-03603).

Results

Figure 2 shows pupil dilation as a function of time in the healthy control and rMDD groups for gain and loss trials. Table 2 shows descriptive and inferential statistics from model parameters (α and β), mean score on the last trial, and differences in proportions of correct choices for each group. There were no significant differences between the groups for the model parameters, but there was a significant difference between groups on mean score on the last trial and percentage of correct choices over all trials. The proportion of correct choices per block and group is illustrated in Figure 3.

H1. Blunted pupillary reactivity to losses and gains in rMDD

In order to investigate whether the rMDD group displayed blunted pupillary responses to losses and gains, we ran a mixed linear regression with pupillary dilation after feedback as outcome variable and outcome (gain/loss) and group (rMDD/healthy control) as fixed effects, and block (5 in total) and ID as random effects. The best model included an interaction between group and outcome as fixed effects and a correlated random intercept for each participant

and slope for each block: pupil response \sim group * outcome + (block|ID)

Results are shown in Figure 4 and Table 3. There was an effect of outcome ($\beta = -1.12$, $SE = 0.21$, $t = -5.28$, $p < .001$), amounting to a smaller pupillary response when the outcome was positive. No main effect of group was found, but the interaction effect between group and outcome was significant ($\beta = 0.81$, $SE = 0.34$, $t = 2.37$, $p = .018$) (depicted in Figure 4). Pairwise comparisons showed that healthy controls responded differently to gains and losses ($\beta_{diff} = 1.23$, $SE = 0.21$, $Z\text{-ratio} = 5.28$, $p < .001$), whereas no difference between outcomes was found within the rMDD group.

To examine whether results could have been modulated by the type of stimulus shown, we re-ran the analysis and included the two- and three-way interaction terms group * condition and group * condition * outcome. Neither of these interaction terms were significant (see table Appendix, Table A1).

H2. Blunted pupillary reactivity in expectation of gains and losses (e.g., after a choice has been made, but before the outcome has been presented)

In order to investigate whether the rMDD group displayed blunted pupillary reactivity to gains and losses, we ran a mixed linear regression with pupil dilation before the stimulus was presented as outcome variable and outcome on previous trial (shifted outcome), and group (rMDD/healthy control), as fixed effects, and block and id as random effects. The best model was pupilresponse \sim shifted outcome + group + (block|ID). As can be seen in Table 4, there were no significant effects for either predictor variables.

H3 (lower learning rate in the rMDD group) and H4 (less exploration in the rMDD group)

As can be seen in Table 2, the rMDD group did neither display reduced learning rates (H3) and nor less exploration (H4). However, there was a significant difference between mean scores, where the rMDD group displayed lower mean scores than the healthy control group. There was also a significant difference between proportion of correct choices between groups (see Figure 3 and Table 2).

Table 2. Medians (Mdn) and median absolute deviation (MAD) for the rMDD and healthy control groups for model parameters (a & b), and means (M) and standard deviations (SD) for score on last trial and proportion of correct choices. Statistical tests (Wilcoxon signed rank test and *t* test) for each variable are provided in the third column

	rMDD	Healthy control	Statistical test
Learning rate (α)	Mdn = 0.8 (IQR = 0.2)	Mdn = 0.8 (IQR = 0.3)	$Z = 0.11, p = .90$
Exploration (β)	Mdn = 1.6 (IQR = 0.7)	$M = 1.8$ (IQR = 1.6)	$Z = 0.27, p = .79$
Score (last trial)	$M = 115$ (SD = 6.2)	$M = 120$ (SD = 10.0)	$t(46.77) = 2.12, p = .040$
Proportion of correct choices	$M = .61$ (SD = .04)	$M = .64$ (SD = .07)	$t(46.70) = 2.09, p = .041$

Note. For participants with data from both conditions (face/no face), the mean value was computed for the last trials, for participants with data from only one condition, the single value on the last trial was entered in the *t* test.

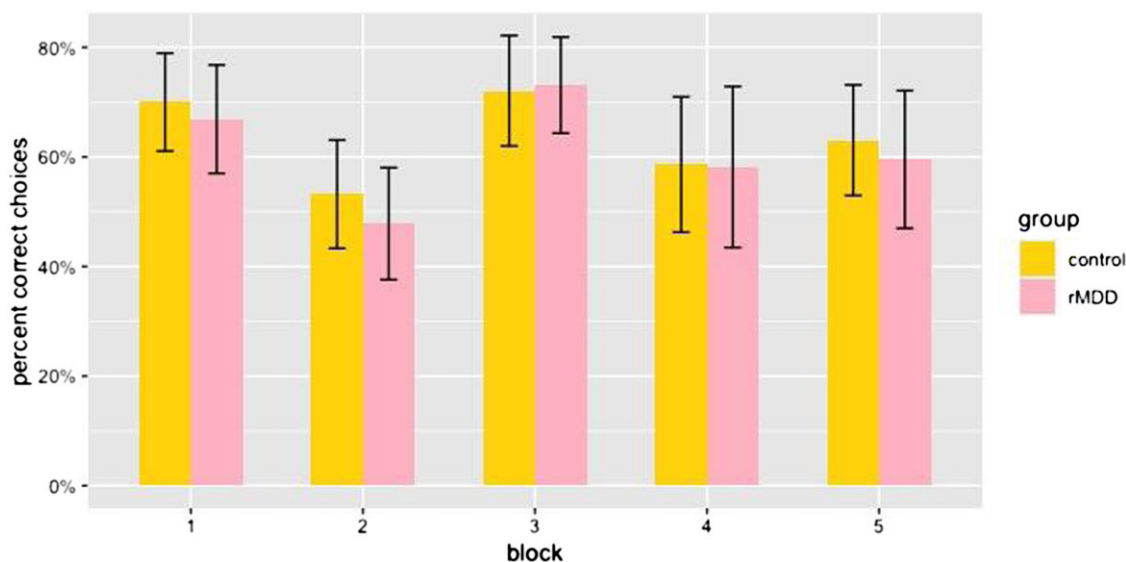


Figure 3. Percentage of correct choices over all trials (y-axis), with standard error of the mean, for each block (x-axis) and group (legend), where golden represents healthy control (control) and pink rMDD.

Discussion

Previous studies have documented blunted responses to reinforcers in individuals with ongoing MDD, but there is an ongoing discussion about whether these abnormalities reflect a depressive state or whether they persist in remission. We addressed this question in a preregistered study, by comparing reinforcement learning and pupillary responses to gains and losses in individuals with MDD in remission (rMDD) and healthy controls using a probabilistic response task. Results showed that individuals with rMDD differentiated less between rewards and losses than never depressed individuals with their pupil dilation response. Further, the rMDD group displayed lower mean scores at the last trial than the healthy control group as well as a smaller proportion of correct choices over trials. This adds to a growing literature suggesting that reward processing abnormalities previously found in acute MDD persist in remission (Pechtel et al., 2013; Whitton et al., 2016). To the best of our knowledge, this is the first study to demonstrate that pupil dilation, a peripheral index of arousal, is atypically sensitive to reinforcers in rMDD. Below, we discuss the results and the implications in relation to the hypotheses.

In healthy controls, pupil dilation responses were higher to losses than to gains. This is in line with previous research demonstrating that pupil dilation increases to motivationally salient or attention capturing events (Samuels & Szabadi, 2008). It should be noted, though, that this pattern of results is different from other

physiological measures used in studies of reward processing in MDD, such as the BOLD signal in the ventral striatum, where gains typically result in higher responses (Schultz, 2007). In contrast to healthy controls, individuals with rMDD did not differentiate significantly between positive and negative outcomes. This result, which is in line with our hypothesis, suggests that individuals with a lifetime history of MDD have a reduced sensitivity to the hedonic value of stimuli in the environment.

Our results are consistent with the theory that altered responsiveness to the reinforcement value of stimuli in the environment persists after remission from MDD and is present in risk groups for MDD. Using different methodologies, similar conclusions were reached by two previous studies (Pechtel et al., 2013; Whitton et al., 2016). In contrast, typical reinforcement sensitivity in rMDD was reported (McFarland & Klein, 2009). Differences in methods could account for the discrepancies, since subjective ratings of affect rather than objectively observable measures of reward processing were used by McFarland and Klein (2009). Further, McFarland and Klein (2009) used a reward processing paradigm in which participants had no actual control over the stimulus contingencies, and learning was therefore not possible. In contrast, the present and other studies finding attenuated reinforcement sensitivity in rMDD have examined reinforcement processing in volatile environments where learning is possible (Pechtel et al., 2013; Whitton et al., 2016). Our study demonstrates, for the first time,

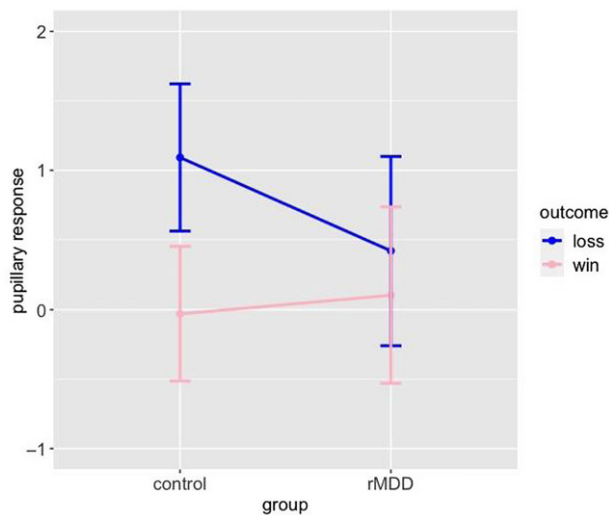


Figure 4. Effect plot of the interaction between outcome (x-axis) and group (right panel) on feedback pupillary response (y-axis). An effect plot takes the lower order terms as well as the random effects into account by plotting the marginal effects of the target variables setting the remaining covariates to their means. The means are hence the marginal means of each estimate (four in total) taking the remaining covariates and the random effects into account and the confidence intervals thereof.

that pupil dilation is a sensitive index of reinforcement processing abnormalities in rMDD. Interestingly, blunted reinforcement processing in rMDD was found in response to losses rather than gains, whereas studies using ERPs found altered responses to gains (Weinberg & Shankman, 2017; Whitton et al., 2016). Our results therefore suggest that rMDD may be characterized by attenuated responses to both gains and losses, although these two types of atypicalities may have different neural correlates.

Contrary to our hypothesis that pupillary expectation response would be smaller in rMDD compared to healthy controls for the expectation of gains and losses, we did not find any significant differences. This suggests that whereas processes related to reward administration or omission are affected in rMDD, expectation (“wanting”) may be intact. However, since this is the first study examining the question in rMDD, more research is needed. A possible explanation for the lack of group differences in anticipatory responses is the fact that the contingencies changed every 15 trials, and hence all participants learned that contingencies could change, leading to less expectation in their pupillary response. It is also possible that a more consistent anticipatory pupillary response would be found during the expectation period if a subsequent motor response rather than passive viewing would have been required, as in a previous study in individuals with ongoing MDD (Schneider et al., 2020).

Neither were our third and fourth hypotheses regarding lower learning rate (lower α -values) and less exploration (higher β -values) in rMDD compared with healthy controls supported by the data, despite the fact that individuals with rMDD showed overall worse task performance. A recent study (Heo et al., 2021) investigated whether subclinical individuals displayed aberrant value integration and value-action conversion. To this end, the authors introduced separate learning rates for model-based and model-free reward learning (RL) that allowed investigation of the ability to arbitrate between each RL system. The experimental paradigm was designed in such a way that two behavioral patterns could be mapped to each set of models: The indicator of the model free RL was choice consistency, and choice optimality was an indicative of model-based RL. Results showed that choice consequence and

Table 3. Fixed-effects estimates from the mixed model with feedback pupillary response as dependent variable and, group (healthy control/rMDD) and outcome (win/loss) as fixed effects, with a correlated random intercept for each participant and slope for each block as random effects. For the categorical effects, going from the baseline category, indicated in parenthesis, to the other category results in an increase/decrease of the estimate

Fixed effect	Estimate	SE	t-value	p-value
Intercept	1.09	0.27	4.04	<.001
Group (rMDD)	- 0.67	0.44	- 1.53	.13
Outcome (win)	- 1.12	0.22	- 5.28	<.001
Group (rMDD) x outcome (win)	0.81	0.34	2.37	.018

Note. SE denotes the standard error of the mean.

Table 4. Fixed-effects estimates from the mixed model with anticipatory pupillary response as dependent variable and, rMDD group and shifted outcome (win/loss) as fixed effects, with a correlated random intercept for each participant and slope for each block as random effects, going from the baseline category, indicated in parenthesis, to the other category results in an increase/decrease of the estimate

Effect	Estimate	SE	t-value	p-value
Intercept	2.30e-4	0.33	0.001	.99
Group (rMDD)	0.18	0.51	0.35	.73
Shifted outcome (win)	- 0.18	0.15	- 1.24	.22

Note. SE denotes the standard error of the mean.

optimality as well as the ability to change between the model based and model-free RL were correlated with degree of depression. In relation to the current modeling results, it is plausible that the changing value-based environment, captured with model-free RL, was not well suited to detect the behavioral differences in the rMDD group. The fact that pupillary responses captured differences between rMDD and healthy controls in the current setup allows for the possibility that pupillary dilation could serve as an index for the shifting between model-based and model-free RL. However, this remains to be investigated empirically.

The group difference in pupillary responses between individuals with rMDD and healthy controls was not modulated by the type of feedback (face or nonfacial symbol). However, the conclusions which can be drawn regarding this effect are limited by a relatively small sample size. It should also be noted that the facial images used in the study showed expressions of either joy or anger. Previous eye tracking studies in individuals with ongoing depression (e.g., Klawohn et al., 2020) have shown atypical attention to facial expressions of sadness, which may be a more disorder congruent emotional expression than anger or joy. An interesting question for future studies is therefore whether facial expressions of sadness modulate reward learning in individuals with ongoing or remitted MDD.

Limitations and suggestions for future studies

In the current study, we did not have a continuous measure of symptoms of MDD and other mental health conditions to complement the binary classifications. Because of this, we were not able to examine whether interindividual variation in subclinical depressive symptoms or specific symptom dimensions such as anhedonia or apathy were related to the observed result.

It should be noted, though, that all participants were interviewed by trained psychologists, who used a validated semi-structured interview to determine the presence of MDD symptoms. It is therefore not likely that clinically meaningful

subclinical symptoms would have been detected by continuous self-rating scales. Importantly, previous studies of reward processing in rMDD have not found any relation between self-rated residual symptom level and reward processing (Pechtel et al., 2013; Whitton et al., 2016). The design with mixed expected and unexpected uncertainty did not allow for separate estimates of different types of uncertainty. Future research should investigate the ability in rMDD to estimate the different types of uncertainty in relation to both positive and negative outcomes. An additional limitation is that participants were able to freely move their gaze during the experiment. Therefore, the possibility that eye movements may have influenced pupil size cannot be ruled out (Brisson et al., 2013; Hayes & Petrov, 2016). However, it should be noted that the groups did not differ in the number of fixations or gaze position relative to the center of the screen and that only very weak correlations were observed between pupil size and gaze position. Therefore, group differences in eye movements are not likely to explain the results.

Finally, it should be noted that a relatively high number of participants in the current sample had a life time history of MDD (~38%), which can be compared to an estimated life time prevalence of 10–20% in recent studies (Hasin et al., 2018; Lim et al., 2018). A potential reason for the relatively high prevalence of rMDD in the sample may be the fact that participants were recruited from a database of research volunteers administered by a medical university, which may have attracted individuals with depressive symptoms. Unfortunately, no data on the educational or professional background of the participants were collected. An interesting question for future studies is whether treatment history modulates pupillary responses and reward learning parameters in rMDD. This question should ideally be addressed in longitudinal studies. Despite these limitations, the present study contributes to our understanding of reward processing in depression by demonstrating a persisting reduction in reward sensitivity and lower scores on last trial as well as a smaller proportion of correct choices in individuals with a history of depression, also after full symptomatic remission. Our results indicate that pupil dilation is a feasible marker of MDD-like altered reward processing.

Implications

Pupil dilation is a noninvasive, relatively inexpensive method, which is potentially applicable in a clinical environment. The present results show that pupillary response has the potential to serve as an index of rMDD, and possibly also as a marker of trait vulnerabilities to MDD. An interesting venue for future research is to examine pupillary responses to rewards in individuals with ongoing MDD undergoing various treatments. Another pertinent research area is to disentangle the causes of aberrant decision making – is it a trait, state, or a marker of anhedonia? As noted in the introduction, altered reward processing may be implicated in the risk for relapse. Recent psychological treatments address reward processing impairments directly (Craske et al., 2016), and an important question is to examine the extent to which they are successful. Relatedly, research has shown that blunted reward learning is predictive of treatment outcome of antidepressant medication (Admon et al., 2015), but how does pharmacological treatments with selective serotonin reuptake inhibitors and serotonin and noradrenaline reuptake inhibitors affect noradrenergic transmission and decision making? Since both types of medication affect noradrenergic transmission, pupil dilation may be a particularly feasible method for understanding their effect on reward processing.

Supplementary material. The supplementary material for this article can be found at <https://doi.org/10.1017/S1355617722000224>

Acknowledgments. The authors thank Ida Fjällström and Dimitar Kratsev for valuable help with data collection.

Author contributions. Mona Guath: conceptualisation, software, methodology, formal analysis, visualisation, writing – original draft, writing – review & editing. Charlotte Willfors: investigation, writing – review & editing. Hanna Björin Avdic: investigation, writing – review & editing. Ann Nordgren: investigation, writing – review. Johan Lundin Kleberg: conceptualisation, methodology, software, formal analysis, data curation, visualization, writing – original draft, writing – review & editing.

Funding statement. This work was supported by grants to JLK from the Strategic Research Neuroscience (StratNeuro), the Centre for Psychiatry Research, the Magnus Bergwall Foundation, and the Åke Wiberg Foundation.

Conflicts of interest. None.

References

- Admon, R., Nickerson, L. D., Dillon, D. G., Holmes, A. J., Bogdan, R., Kumar, P., Dougherty, D. D., Iosifescu, D. V., Mischoulon, D., Fava, M., & Pizzagalli, D. A. (2015). Dissociable cortico-striatal connectivity abnormalities in major depression in response to monetary gains and penalties. *Psychological Medicine*, 45, 121–131. <https://doi.org/10.1017/S0033291714001123>
- Admon, R., & Pizzagalli, D. A. (2015). Dysfunctional reward processing in depression. *Current Opinion in Psychology*, 4, 114–118. <https://doi.org/10.1016/j.copsy.2014.12.011>
- American Psychiatric Association. (2013). Diagnostic and statistical manual of mental disorders (5th ed.). <https://doi.org/10.1176/appi.books.9780890425596>
- Aston-Jones, G., & Cohen, J. D. (2005). An integrative theory of locus Coeruleus-Norepinephrine function: adaptive gain and optimal performance. *Annual Review of Neuroscience*, 28, 403–450. <https://doi.org/10.1146/annurev.neuro.28.061604.135709>
- Bates, D., Mächler, M., Bolker, B., & Walker, S. (2015). Fitting linear mixed-effects models using lme4. *Journal of Statistical Software*, 67, 1–48. <https://doi.org/10.18637/jss.v067.i01>
- Bernaras, E., Jaureguizar, J., & Garaigordobil, M. (2019). Child and adolescent depression: a review of theories, evaluation instruments, prevention programs, and treatments. *Frontiers in Psychology*, 10, 543. <https://doi.org/10.3389/fpsyg.2019.00543>
- Blanco, N. J., Otto, A. R., Maddox, W. T., Beevers, C. G., & Love, B. C. (2013). The influence of depression symptoms on exploratory decision-making. *Cognition*, 129, 563–568. <https://doi.org/10.1016/j.cognition.2013.08.018>
- Braem, S., Coenen, E., Bombeke, K., van Bochove, M. E., & Notebaert, W. (2011). Open your eyes for prediction errors. <https://doi.org/10.3758/s13415-014-0333-4>
- Brisson, J., Mainville, M., Mailloux, D., Beaulieu, C., Serres, J., & Sirois, S. (2013). Pupil diameter measurement errors as a function of gaze direction in corneal reflection eyetrackers. *Behavior Research Methods*, 45, 1322–1331. <https://doi.org/10.3758/s13428-013-0327-0>
- Burcusa, S. L., & Iacono, W. G. (2007). Risk for recurrence in depression. *Clinical Psychology Review*, 27, 959–985. <https://doi.org/10.1016/j.cpr.2007.02.005>
- Burkhouse, K. L., Owens, M., Feurer, C., Sosoo, E., Kudinova, A., & Gibb, B. E. (2016). Increased neural and pupillary reactivity to emotional faces in adolescents with current and remitted major depressive disorder. *Social Cognitive and Affective Neuroscience*, 47, 783–792. <https://doi.org/10.1093/scan/nsw184>
- Cella, M., Dymond, S., & Cooper, A. (2010). Impaired flexible decision-making in major depressive disorder. *Journal of Affective Disorders*, 124, 207–210. <https://doi.org/10.1016/j.jad.2009.11.013>
- Chentsova-Dutton, Y., & Hanley, K. (2010). The effects of anhedonia and depression on hedonic responses. *Psychiatry Research*, 179, 176–180. <https://doi.org/10.1016/j.psychres.2009.06.013>

- Cléry-Melin, M.-L., Jollant, F., & Gorwood, P. (2018). Reward systems and cognitions in major depressive disorder. <https://doi.org/10.1017/S1092852918001335>
- Cooper, J. A., Arulpragasam, A. R., & Treadway, M. T. (2018). Anhedonia in depression: biological mechanisms and computational models HHS public access. *Current Opinion in Behavioral Science*, 22, 128–135. <https://doi.org/10.1016/j.cobeha.2018.01.024>
- Craske, M. G., Meuret, A. E., Ritz, T., Treanor, M., & Dour, H. J. (2016). Treatment for anhedonia: a neuroscience driven approach: 2015 ADAA scientific research symposium: treatment for anhedonia. *Depression and Anxiety*, 33, 927–938. <https://doi.org/10.1002/da.22490>
- Cuijpers, P., Karyotaki, E., Weitz, E., Andersson, G., Hollon, S. D., & van Straten, A. (2014). The effects of psychotherapies for major depression in adults on remission, recovery and improvement: a meta-analysis. *Journal of Affective Disorders*, 159, 118–126. <https://doi.org/10.1016/j.jad.2014.02.026>
- Der-Avakian, A., & Markou, A. (2012). The neurobiology of anhedonia and other reward-related deficits. *Trends in Neurosciences*, 35, 68–77. <https://doi.org/10.1016/j.tins.2011.11.005>
- Dichter, G. S., Felder, J. N., Petty, C., Bizzell, J., Ernst, M., & Smoski, M. J. (2009). The effects of psychotherapy on neural responses to rewards in major depression. *Biological Psychiatry*, 66, 886–897. <https://doi.org/10.1016/j.biopsych.2009.06.021>
- Fournier, J. C., DeRubeis, R. J., Hollon, S. D., Dimidjian, S., Amsterdam, J. D., Shelton, S. C., & Fawcett, J. (2010). Antidepressant drug effects and depression severity: a patient-level meta-analysis. *JAMA*, 303(1), 47–53. <https://doi.org/10.1001/jama.2009.1943>
- Gagne, C., Zika, O., Dayan, P., & Bishop, S. J. (2020). Impaired adaptation of learning to contingency volatility in internalizing psychopathology. *ELife*, 9, e61387. <https://doi.org/10.7554/eLife.61387>
- Gotlib, I. H., Hamilton, P., Cooney, R. E., Singh, M. K., Henry, M. L., & Joormann, J. (2010). Neural processing of reward and loss in girls at risk for major depression. *Archives of General Psychiatry*, 67, 380–387. <https://doi.org/10.1001/archgenpsychiatry.2010.13>
- Gottesman, I. I., & Gould, T. D. (2003). The endophenotype concept in psychiatry: etymology and strategic intentions. *American Journal of Psychiatry*, 160, 4.
- Green, P., & MacLeod, C. J. (2016). SIMR: an R package for power analysis of generalised linear mixed models by simulation. *Methods in Ecology and Evolution*, 7(4), 493–498.
- Hasin, D. S., Sarvet, A. L., Meyers, J. L., Saha, T. D., Ruan, W. J., Stohl, M., & Grant, B. F. (2018). Epidemiology of adult DSM-5 major depressive disorder and its specifiers in the United States. *JAMA Psychiatry*, 75, 336. <https://doi.org/10.1001/jamapsychiatry.2017.4602>
- Hayes, T. R., & Petrov, A. A. (2016). Mapping and correcting the influence of gaze position on pupil size measurements. *Behavior Research Methods*, 48, 510–527. <https://doi.org/10.3758/s13428-015-0588-x>
- Heo, S., Sung, Y., & Lee, S. W. (2021). Effects of subclinical depression on prefrontal–striatal model-based and model-free learning. *PLOS Computational Biology*, 17, e1009003. <https://doi.org/10.1371/journal.pcbi.1009003>
- Holmes, E. A., Ghaderi, A., Harmer, C. J., Ramchandani, P. G., Cuijpers, P., Morrison, A. P., Roiser, J. P., Bocking, C., O'Connor, R. C., Shafran, R., Moulds, M. L., & Craske, M. G. (2018). The Lancet Psychiatry Commission on psychological treatments research in tomorrow's science. *The Lancet. Psychiatry*, 5(3), 237–286. [https://doi.org/10.1016/S2215-0366\(17\)30513-8](https://doi.org/10.1016/S2215-0366(17)30513-8)
- Huys, Q. J., Pizzagalli, D. A., Bogdan, R., & Dayan, P. (2013). Mapping anhedonia onto reinforcement learning: a behavioural meta-analysis. *Biology of Mood & Anxiety Disorders*, 3, 12. <https://doi.org/10.1186/2045-5380-3-12>
- Huys, Q. J. M., Maia, T. V., & Frank, M. J. (2016). Computational psychiatry as a bridge from neuroscience to clinical applications. *Nature Neuroscience*, 19, 404–413. <https://doi.org/10.1038/nn.4238>
- Klawohn, J., Bruchnak, A., Burani, K., Meyer, A., Lazarov, A., Bar-Haim, Y., & Hajcak, G. (2020). Aberrant attentional bias to sad faces in depression and the role of stressful life events: Evidence from an eye-tracking paradigm. *Behaviour Research and Therapy*, 135, 103762. <https://doi.org/10.1016/j.brat.2020.103762>
- Kleberg, J. L., Frick, M. A., & Brocki, K. C. (2020). Increased pupil dilation to happy faces in children with hyperactive/impulsive symptoms of ADHD. *Development and Psychopathology*, 33(3), 767–777. <https://doi.org/10.1017/S0954579420000036>
- Kleberg, J. L., Hanqvist, C., Serlachius, E., & Högström, J. (2019). Pupil dilation to emotional expressions in adolescent social anxiety disorder is related to treatment outcome. *Journal of Anxiety Disorders*, 65, 26–33. <https://doi.org/10.1016/J.JANXDIS.2019.04.006>
- Kleiner, M., Brainard, D., & Pelli, D. (2007). What's new in psychtoolbox-3? *Perception*, 36, 1–16.
- Kudinova, A. Y., Burkhouse, K. L., Siegle, G., Owens, M., Woody, M. L., & Gibb, B. E. (2016). Pupillary reactivity to negative stimuli prospectively predicts recurrence of major depressive disorder in women: pupillary reactivity and depression recurrence. *Psychophysiology*, 53, 1836–1842. <https://doi.org/10.1111/psyp.12764>
- Laeng, B., Sirois, S., & Gredebäck, G. (2012). Pupillometry: a window to the pre-conscious? *Perspectives on Psychological Science*, 7, 18–27. <https://doi.org/10.1177/1745691611427305>
- Le Heron, C., Apps, M. A. J., & Husain, M. (2018). The anatomy of apathy: a neurocognitive framework for amotivated behaviour. *Neuropsychologia*, 118, 54–67.
- Leclercq, Y., Sheehan, D., Weiller, E., Amorim, P., Bonora, I., Sheehan, K. H., Janavs, J., & Dunbar, G. (1997). The mini international neuropsychiatric interview (MINI). A short diagnostic structured interview: reliability and validity according to the CIDI. *European Psychiatry*, 12, 224–231. [https://doi.org/10.1016/S0924-9338\(97\)83296-8](https://doi.org/10.1016/S0924-9338(97)83296-8)
- Levy, D. J., & Glimcher, P. W. (2012). The root of all value: a neural common currency for choice. *Current Opinion in Neurobiology*, 22, 1027–1038. <https://doi.org/10.1016/j.conb.2012.06.001>
- Lim, G. Y., Tam, W. W., Lu, Y., Ho, C. S., Zhang, M. W., & Ho, R. C. (2018). Prevalence of depression in the community from 30 countries between 1994 and 2014. *Scientific Reports*, 8, 2861. <https://doi.org/10.1038/s41598-018-21243-x>
- Manohar, S. G., & Husain, M. (2015). Reduced pupillary reward sensitivity in Parkinson's disease. *NPJ Parkinson's Disease*, 1, 15026. <https://doi.org/10.1038/npparkd.2015.26>
- McFarland, B. R., & Klein, D. N. (2009). Emotional reactivity in depression: diminished responsiveness to anticipated reward but not to anticipated punishment or to nonreward or avoidance. *Depression and Anxiety*, 26, 117–122. <https://doi.org/10.1002/da.20513>
- Nassar, M. R., Rumsey, K. M., Wilson, R. C., Parikh, K., Heasly, B., & Gold, J. I. (2012). Rational regulation of learning dynamics by pupil-linked arousal systems. *Nature Neuroscience*, 15, 1040–1046. <https://doi.org/10.1038/nn.3130>
- Pechtel, P., Dutra, S. J., Goetz, E. L., & Pizzagalli, D. A. (2013). Blunted reward responsiveness in remitted depression. *Journal of Psychiatric Research*, 47, 1864–1869. <https://doi.org/10.1016/j.jpsychires.2013.08.011>
- Pizzagalli, D. A., Iosifescu, D., Hallett, L. A., Ratner, K. G., & Fava, M. (2008). Reduced hedonic capacity in major depressive disorder: evidence from a probabilistic reward task. *Journal of Psychiatric Research*, 43, 76–87. <https://doi.org/10.1016/j.jpsychires.2008.03.001>
- Rømer Thomsen, K., Whybrow, P. C., & Kringelbach, M. L. (2015). Reconceptualizing anhedonia: novel perspectives on balancing the pleasure networks in the human brain. *Frontiers in Behavioral Neuroscience*, 9, 49. <https://doi.org/10.3389/fnbeh.2015.00049>
- Samuels, E. R., & Szabadi, E. (2008). Functional neuroanatomy of the noradrenergic locus coeruleus: its roles in the regulation of arousal and autonomic function part II: physiological and pharmacological manipulations and pathological alterations of locus coeruleus activity in humans. *Current Neuropharmacology*, 6, 254–285. <https://doi.org/10.2174/157015908785777193>
- Schneider, M., Elbau, I. G., Nantawisarakul, T., Pöhlchen, D., Brückl, T., BeCOME Working Group, Czisch, M., Saemann, P. G., Lee, M. D., Binder, E. B., & Spoormaker, V. I. (2020). Pupil dilation during reward anticipation is correlated to depressive symptom load in patients with major depressive disorder. *Brain Sciences*, 10, 906. <https://doi.org/10.3390/brainsci10120906>

- Schultz, W. (2007). Behavioral dopamine signals. *Trends in Neurosciences*, 30, 203–210. <https://doi.org/10.1016/j.tins.2007.03.007>
- Schultz, W. P., Khazian, A. M., & Zaleski, A. C. (2008). Using normative social influence to promote conservation among hotel guests. *Social Influence*, 3, 4–23. <https://doi.org/10.1080/15534510701755614>
- Sheehan, D. V., Lecrubier, Y., Sheehan, H. K., Amorim, P., Janavs, J., Weiller, E., Hergueta, T., Baker, R., & Dunbar, G. C. (1998). The mini-international neuropsychiatric interview (M.I.N.I.): the development and validation of a structured diagnostic psychiatric interview for DSM-IV and ICD-10. *The Journal of Clinical Psychiatry*, 59, 22–23.
- Siegle, G. J., Steinhauer, S. R., Friedman, E. S., Thompson, W. S., & Thase, M. E. (2011). Remission prognosis for cognitive therapy for recurrent depression using the pupil: utility and neural correlates. *Biological Psychiatry*, 69, 726–733. <https://doi.org/10.1016/j.biopsych.2010.12.041>
- Steidtmann, D., Ingram, R. E., & Siegle, G. J. (2010). Pupil response to negative emotional information in individuals at risk for depression. *Cognition & Emotion*, 24, 480–496. <https://doi.org/10.1080/02699930902738897>
- Treadway, M. T., & Zald, D. H. (2011). Reconsidering anhedonia in depression: lessons from translational neuroscience. *Neuroscience & Biobehavioral Reviews*, 35, 537–555. <https://doi.org/10.1016/j.neubiorev.2010.06.006>
- Ubl, B., Kuehner, C., Kirsch, P., Ruttorf, M., Flor, H., & Diener, C. (2015). Neural reward processing in individuals remitted from major depression. *Psychological Medicine*, 45, 3459–2558. <https://doi.org/10.1017/S0033291715001452>
- Van Slooten, J. C., Jahfari, S., Knapen, T., & Theeuwes, J. (2018). How pupil responses track value-based decision-making during and after reinforcement learning. *PLOS Computational Biology*, 14, e1006632. <https://doi.org/10.1371/journal.pcbi.1006632>
- Wacker, J., Dillon, D. G., & Pizzagalli, D. A. (2009). The role of the nucleus accumbens and rostral anterior cingulate cortex in anhedonia: integration of resting EEG, fMRI, and volumetric techniques. *NeuroImage*, 46, 327–337. <https://doi.org/10.1016/j.neuroimage.2009.01.058>
- Watkins, C. J. C. H., & Dayan, P. (1992). Q-learning. *Machine Learning*, 8, 279–292. <https://doi.org/10.1007/BF00992698>
- Weinberg, A., & Shankman, S. A. (2017). Blunted reward processing in remitted melancholic depression. *Clinical Psychological Science*, 5, 14–25.
- Whitton, A. E., Kakani, P., Foti, D., Van't Veer, A., Haile, A., Crowley, D. J., & Pizzagalli, D. A. (2016). Archival report blunted neural responses to reward in remitted major depression: a high-density event-related potential study. *Biological Psychiatry: Cognitive Neuroscience and Neuroimaging*, 1, 87–95. <https://doi.org/10.1016/j.bpsc.2015.09.007>
- Willenbockel, V., Sadr, J., Fiset, D., Horne, G. O., Gosselin, F., & Tanaka, J. W. (2010). Controlling low-level image properties: the SHINE toolbox. *Behavior Research Methods*, 42, 671–684. <https://doi.org/10.3758/BRM.42.3.671>