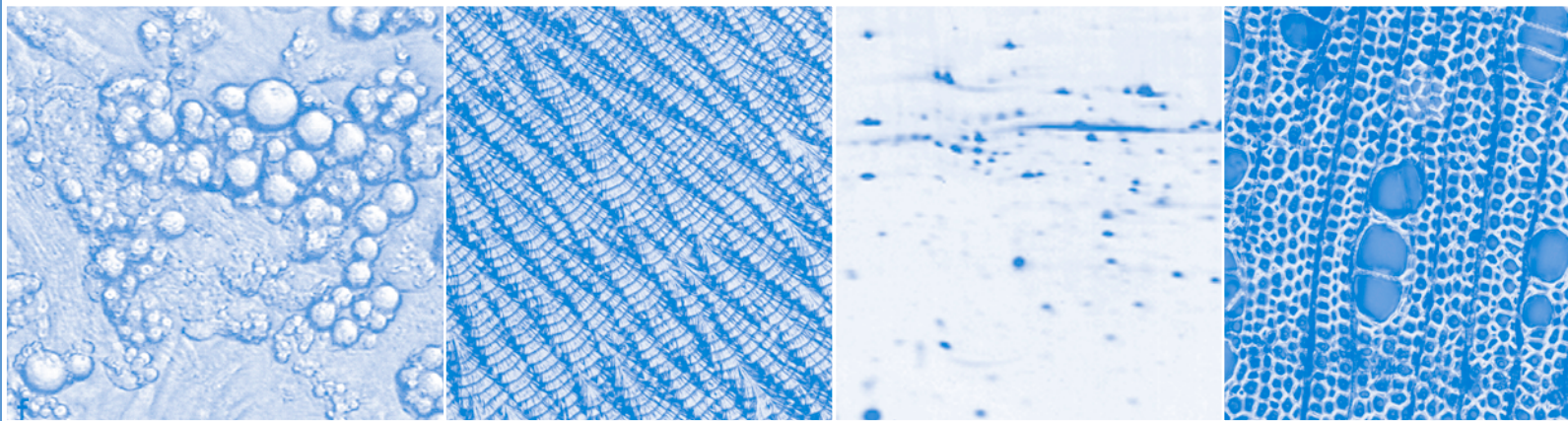


British Journal of Nutrition

Published online by Cambridge University Press

BJN An International Journal of Nutritional Science

Volume 106 Number 2 28 July 2011



Published on behalf of The Nutrition Society by Cambridge University Press

ISSN 0007-1145

British Journal of Nutrition
An International Journal of Nutritional Science
Volume 106, 2011 ISSN: 0007-1145

Aims and Scope

The *British Journal of Nutrition* is an international, peer-reviewed journal publishing original papers, review articles, short communications and technical notes on human and clinical nutrition, animal nutrition and basic science as applied to nutrition. Correspondence is encouraged in a Nutrition Discussion Forum. The Journal recognizes the multidisciplinary nature of nutritional science and encourages the submission of material from all of the specialities involved in research and clinical practice. The Journal also publishes supplements on topics of particular interest.

The *British Journal of Nutrition* is published twice monthly by Cambridge University Press on behalf of The Nutrition Society.

The *British Journal of Nutrition* is available online to subscribers at journals.cambridge.org/bjn
 Tables of contents and abstracts are available free at the same website.

Editor-in-Chief

P C Calder, *School of Medicine, University of Southampton, Southampton, UK*

Deputy Editors

F Bellisle, *INRA, University of Paris, Bobigny, France*

D R Jacobs Jr, *School of Public Health, University of Minnesota, Minneapolis, MN, USA*

R J Wallace, *Gut Health Programme, Rowett Institute of Nutrition and Health, University of Aberdeen, Aberdeen, UK*

S J Whiting, *College of Pharmacy and Nutrition, University of Saskatchewan, Saskatoon, Sask., Canada*

I S Wood, *Institute of Ageing and Chronic Disease, University of Liverpool, Liverpool, UK*

Reviews Editors

D J Millward, *Faculty of Health and Medical Sciences, University of Surrey, UK*

P Aggett

Systematic Reviews Editor

M Makrides, *Women's and Children's Health Research Institute and University of Adelaide, Adelaide, Australia*

Supplements Editor

J Woodside, *Nutrition and Metabolism Group, Centre for Public Health, Queen's University, Belfast, UK*

Editorial Board

J J B Anderson, *Chapel Hill, NC, USA*

Y Bao, *Norwich, UK*

J H Beattie, *Aberdeen, UK*

G Bell, *Stirling, UK*

M Blaut, *Bergholz-Rehbrücke, Germany*

S Brix Pedersen, *Lyngby, Denmark*

G C Burdge, *Southampton, UK*

A E Buyken, *Dortmund, Germany*

J Buysse, *Leuven, Belgium*

K D Cashman, *Cork, Ireland*

R S Chapkin, *College Station, TX, USA*

M S Choi, *Daegu, Korea*

A Collins, *Oslo, Norway*

S J Duthie, *Aberdeen, UK*

U Ekelund, *Cambridge, UK*

A Esmailzadeh, *Isfahan, Iran*

B A Fielding, *Oxford, UK*

J L Firkins, *Columbus, OH, USA*

J K Friel, *Winnipeg, MB, Canada*

M Fukushima, *Obihiro City, Japan*

S Garnett, *Sydney, Australia*

B A Griffin, *Surrey, UK*

J C G Halford, *Liverpool, UK*

E Herrera, *Madrid, Spain*

D J Hoffman, *New Brunswick, NJ, USA*

E J Johnson, *Boston, MA, USA*

S J Kaushik, *Saint Pée-sur-Nivelle, France*

D S Kelley, *Davis, Ca., USA*

C W C Kendall, *Toronto, Ont., Canada*

J P Lallès, *Rennes, France*

A Laviano, *Rome, Italy*

H J Lightowler, *Oxford, UK*

A M López-Sobaler, *Madrid, Spain*

J A Lovegrove, *Reading, UK*

R D Mattes, *West Lafayette, IN, USA*

C Mayer, *Aberdeen, UK*

S McCann, *Buffalo, NY, USA*

J P McClung, *Natick, MA, USA*

N M McKeown, *Boston, MA, USA*

S McMullen, *Nottingham, UK*

D McMurray, *College Station, TX, USA*

J G Mercer, *Aberdeen, UK*

A M Minihane, *Norwich, UK*

T A Mori, *Perth, Australia*

M Murphy, *Reus, Spain*

P Nestel, *Southampton, UK*

U Nöthlings, *Kiel, Germany*

M C Ocké, *Bilthoven, The Netherlands*

J H Y Park, *Chuncheon, Korea*

E Perissinotto, *Padova, Italy*

C J Petry, *Cambridge, UK*

S M Phillips, *Hamilton, Ont., Canada*

S Proctor, *Edmonton, Alta., Canada*

W D Rees, *Aberdeen, UK*

G Rimbach, *Kiel, Germany*

S M Robinson, *Southampton, UK*

E Ros, *Barcelona, Spain*

S Salminen, *Turku, Finland*

M B Schulze, *Nuthetal, Germany*

T Sheehy, *Cork, Ireland*

A J Sinclair, *Geelong, Australia*

C R Sirtori, *Milan, Italy*

K S Swanson, *Urbana, IL, USA*

D Tomé, *Paris, France*

F Visioli, *Madrid, Spain*

M R Yeomans, *Sussex, UK*

Publications Staff

C Goodstein (*Publications Manager*), C Jackson (*Deputy Publications Manager*), L Weeks,
 H Zdravics and C T Hughes (*Publications Officers*) and S Hui and D Owen (*Publications Assistants*)

The Nutrition Society has as its objective the advancement of the scientific study of nutrition and its applications to the maintenance of human and animal health.

Application of membership is invited from anyone whose work has contributed to the scientific knowledge of nutrition, whether such work has been in the laboratory, the field or the clinic, and whether experimental, clinical, agricultural or statistical in nature. There is also a student membership scheme with reduced subscriptions.

Particulars of The Nutrition Society and application forms for membership are available from The Nutrition Society, 10 Cambridge Court, 210 Shepherds Bush Road, London W6 7NJ, UK. Tel: +44 (0)20 7602 0228, Fax: +44 (0)20 7602 1756, Email: office@nutsoc.org.uk

The Nutrition Society Home Page is at <http://www.nutritionssociety.org>

Contents

Review Articles

- Dairy constituents and neurocognitive health in ageing.
D. A. Camfield, L. Owen, A. B. Scholey, A. Pipingas & C. Stough 159–174
- Adjusting diet with sapropterin in phenylketonuria: what factors should be considered?
A. MacDonald, K. Ahring, K. Dokoupil, H. Gokmen-Ozel, A. M. Lammardo,
K. Motzfeldt, M. Robert, J. C. Rocha, M. van Rijn & A. Bélanger-Quintana 175–182
- Vitamin B₆: a challenging link between nutrition and inflammation in CVD.
V. Lotto, S.-W. Choi & S. Friso 183–195
- The efficacy of *Phaseolus vulgaris* as a weight-loss supplement: a systematic review and meta-analysis of randomised clinical trials.
I. Onakpoya, S. Aldaas, R. Terry & E. Ernst 196–202

Short Communication

- Effect of food form on postprandial plasma amino acid concentrations in older adults.
T. B. Conley, J. W. Apolzan, H. J. Leidy, K. A. Greaves, E. Lim & W. W. Campbell 203–207
- Consumption of a DHA-containing functional food during pregnancy is associated with lower infant ponderal index and cord plasma insulin concentration.
A. B. Courville, O. Harel & C. J. Lammi-Keefe 208–212
- Autophagy up-regulation by early weaning in the liver, spleen and skeletal muscle of piglets.
S. Zhang, X. Li, L. Li & X. Yan 213–217

Metabolism and Metabolic Studies

- Effect of *trans*-fat, fructose and monosodium glutamate feeding on feline weight gain, adiposity, insulin sensitivity, adipokine and lipid profile.
K. S. Collison, M. Z. Zaidi, S. M. Saleh, A. Inglis, R. Mondreal, N. J. Makhoul, R. Bakheet,
J. Burrows, N. W. Milgram & F. A. Al-Mohanna 218–226
- Evidence for a role of the ileum in the control of nitrogen homeostasis via the regulation of arginine metabolism.
G. Ventura, C. Moinard, F. Sinico, V. Carrière, V. Lasserre, L. Cynober & J. P. De Bandt 227–236

Nutritional Endocrinology

- Relationships of maternal zinc intake from animal foods with fetal growth.
Y. A. Lee, J.-Y. Hwang, H. Kim, E.-H. Ha, H. Park, M. Ha, Y. Kim, Y.-C. Hong
& N. Chang 237–242
- Geographical distribution of drinking-water with high iodine level and association between high iodine level in drinking-water and goitre: a Chinese national investigation.
H. Shen, S. Liu, D. Sun, S. Zhang, X. Su, Y. Shen & H. Han 243–247

Human and Clinical Nutrition

- Protein and fat modify the glycaemic and insulinaemic responses to a mashed potato-based meal.
K. A. Hätönen, J. Virtamo, J. G. Eriksson, H. K. Sinkko, J. E. Sundvall & L. M. Valsta 248–253

Dietary Survey and Nutritional Epidemiology

- Estimation of total antioxidant capacity from diet and supplements in US adults.
M. Yang, S.-J. Chung, C. E. Chung, D.-O. Kim, W. O. Song, S. I. Koo & O. K. Chun 254–263

Innovative Technique

- An integrative *in vitro* approach to analyse digestion of wheat polysaccharides and the effect of enzyme supplementation.
M. Lafond, B. Bouza, S. Eyrichine, E. Bonnin, E. H. Crost, P.-A. Geraert, T. Giardina
& E. H. Ajandouz 264–273

Behaviour, Appetite and Obesity

- Self-reported energy intake by FFQ compared with actual energy intake to maintain body weight in 516 adults.
E. Siebelink, A. Geelen & J. H. M. de Vries 274–281

- Effects of a high-protein, low-carbohydrate v. high-protein, moderate-carbohydrate weight-loss diet on antioxidant status, endothelial markers and plasma indices of the cardiometabolic profile.
A. M. Johnstone, G. E. Lobley, G. W. Horgan, D. M. Bremner, C. L. Fyfe, P. C. Morrice & G. G. Duthie 282–291
- Early high-sodium solid diet does not affect sodium intake, sodium preference, blood volume and blood pressure in adult Wistar-Kyoto rats.
M. Ufnal, A. Drapala, M. Sikora & T. Zera 292–296
- Eating behaviour and retro-nasal aroma release in normal-weight and overweight adults: a pilot study.
N. Zijlstra, A. J. Bukman, M. Mars, A. Stafleu, R. M. A. J. Ruijschop & C. de Graaf 297–306