

## ROMAN SOCIETY

### HUGH LAST AND DONALD ATKINSON FUNDS

Applications for grants are invited for financial assistance towards the undertaking, completion or publication of work that relates to any of the general scholarly purposes of the Roman Society, which are to promote the study of the history, archaeology, literature and art of Italy and the Roman Empire, from the earliest times down to about A.D. 700. Normally this assistance will be given to applicants of post-doctoral status or the equivalent. Grants will not normally be made towards expenses incurred in the preparation of a doctoral or similar thesis. Applications for grants for conferences, colloquia and symposia will be considered only in exceptional circumstances.

Applications, together with two references, should be made before 15 January and sent to the Secretary, Roman Society, Senate House, Malet Street, London WC1E 7HU. It is the responsibility of applicants to arrange for their references to reach the Society by the same date. Further particulars may be obtained from the Secretary.

---

## HELLENIC AND ROMAN SOCIETIES

### SLIDES COLLECTION

The Slides Collection contains over 6,600 coloured 35 mm slides covering a wide variety of subjects, including sites on the Greek mainland, the Greek islands, Cyprus, Rome, Italy and the Roman Empire, Etruscan tomb paintings, Greek vases, Roman frescoes and mosaics, the Roman army, and Roman Britain. Slides of artefacts form a large part of the collection and include bronzes, jewellery and vases as well as maps, plans, models and reconstructions. A detailed subject index is available. A Greek Slide Catalogue (1993) is available at £8 (posted), £7 (collected); a Roman Slide Catalogue (1994) is available at £7 (posted), £6 (collected) *or* both for £13 (posted), £11 (collected).

Individual slides, sets and filmstrips with notes may be hired by members. Filmstrips are also available for sale to members and non-members. Details of current charges may be obtained from the Keeper of Slides.

---

### WINNINGTON-INGRAM TRAINEE LIBRARIAN POST

The Joint Library of the Hellenic and Roman Societies, run in conjunction with the library of the Institute of Classical Studies, is recognised as a premier international research library in Classics. Since its inception in 1953, the use of the Library has grown massively. This has sparked the need for a mission to raise £250,000 to secure the annual Library Traineeship in perpetuity. This post helps to keep the Library open six days a week, including Saturdays and evenings, thus catering particularly for readers outside London and its university.

A fund has been established in memory of Professor R. P. Winnington-Ingram, formerly Director of the Institute and Professor of Greek at King's College London, and has already attracted donations of over £207,000. If you would like to contribute to the fund, please send your contribution to the Appeal Co-ordinator, Winnington-Ingram Appeal, Institute of Classical Studies, Senate House, Malet Street, London WC1E 7HU.

**ROMAN  
SOCIETY  
PUBLICATIONS**

**PERIODICALS  
BACK NUMBERS**

**Journal of Roman Studies** ISSN 0075-4358  
LVIII, LX-LXIII, LXVI, LXXII-LXXVIII (1968, 1970-3, 1976, 1982-8):

£15/US\$30 - individual members, £16/US\$32 - institutions, £21/US\$42 - booksellers  
LXXIX (1989):

£17/US\$34 - individual members, £18/US\$36 - institutions, £25/US\$50 - booksellers

LXXXI-II (1991-2):

£20/US\$40 - individual members, £25/US\$50 - institutions, £30/US\$60 - booksellers

LXXXIV-VI (1994-6): £25/US\$50 - individual members, £30/US\$60 - institutions, £36/US\$72 - booksellers

Indexes to vols XXI-XL & XLI-LX (1931-50 & 1951-70): £5/US\$10 each

**Britannia** ISSN 0068-113X

I-VIII (1970-7):

£7.50/US\$15 - individual members, £8/US\$16 - institutions, £10/US\$20 - booksellers

XI-XIV (1980-3):

£12/US\$24 - individual members, £13/US\$26 - institutions, £18/US\$36 - booksellers

XV-XIX (1984-8):

£15/US\$30 - individual members, £16/US\$32 - institutions, £21/US\$42 - booksellers

XX-XXI (1989-90):

£17/US\$34 - individual members, £18/US\$36 - institutions, £25/US\$50 - booksellers

XXII-XXIV (1991-3):

£20/US\$40 - individual members, £25/US\$50 - institutions, £30/US\$60 - booksellers

XXV-VII (1994-6):

£25/US\$50 - individual members, £30/US\$60 - institutions, £36/US\$72 - booksellers

All prices per vol.

**Index to Britannia I-XXV (1970-94)**

1995, 226 pp. ISBN 0 907764 19 3 £20/US\$40

**OFFPRINTS**

**Journal of Roman Studies**

LXVII (1977) *Air Reconnaissance in Roman Britain, 1973-76*

J.K.S. St Joseph £1.50/US\$3

LXIX (1979) *Elegiacs by Gallus from Qasr Ibrim*  
R.D. Anderson, P.J. Parsons & R.G.M.

Nisbet £3/US\$6

LXXVI (1986) *The Lex Imitana: A New Copy of the Flavian Municipal Law* (97 pp., 19 pls)

Julián González £8/US\$16

**Britannia**

I (1970) *Roman Finds from non-Roman Sites in Scotland*

Anne Robertson £2/US\$4

IX (1978) *Production and Distribution of Tiles in Roman Britain with particular reference to the Cirencester region*

A. McWhirr & D. Viner £1/US\$2

X (1979) *Roman Timber Military Gateways in Britain and on the German Frontier*

W.H. Manning & I.R. Scott £2/US\$4

*Survey of Tile from the Roman Bath House at Beauport Park, E. Sussex*

Gerald Brodrick £1/US\$2

XII (1981) *The Excavation of a Romano-British Farmstead and Cemetery on Bradley Hill, Somerton, Somerset*

Roger Leech £1/US\$2

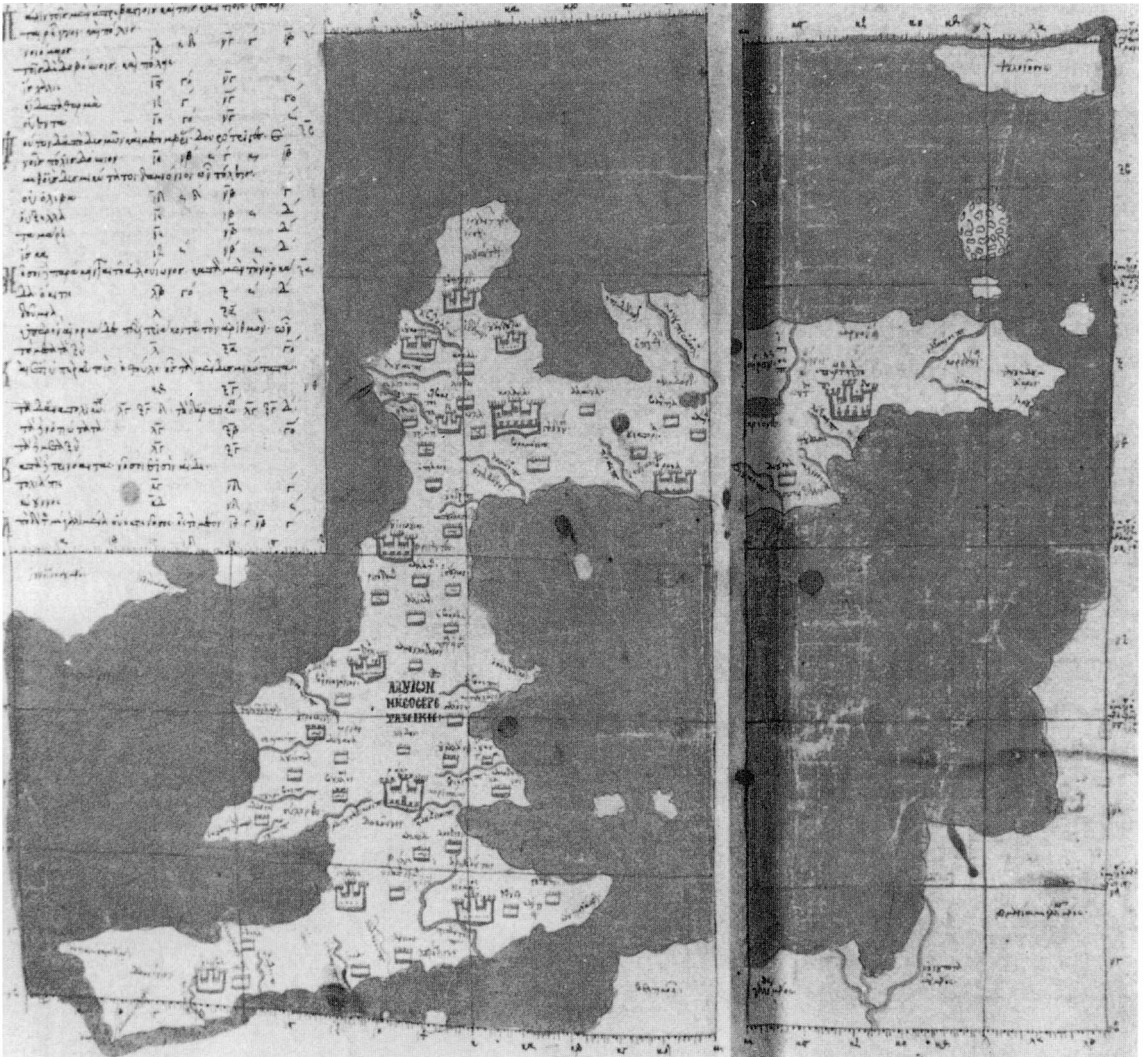
XX (1989) *The Numeri of the Roman Imperial Army*

P. Southern £4.50/US\$9

*Roman Britain in 1990 and for every year up to 1996* per copy £4/US\$8

**For details of ordering  
see inside back cover**

PLATE I



Thirteenth-century manuscript map of Ptolemy's Britain on rectilinear grid (*codex Seragliensis* 27, Topkapi Saray Museum, Istanbul). (p. 4)

PLATE II



B. London: post-pits with timber post-pads along the north side of the entrance-way. (p. 54)



A. London: posts of the timber arena wall beside the later masonry replacement. (p. 54)

PLATE III



London: looking north over the amphitheatre masonry remains. (p. 55)

PLATE IV

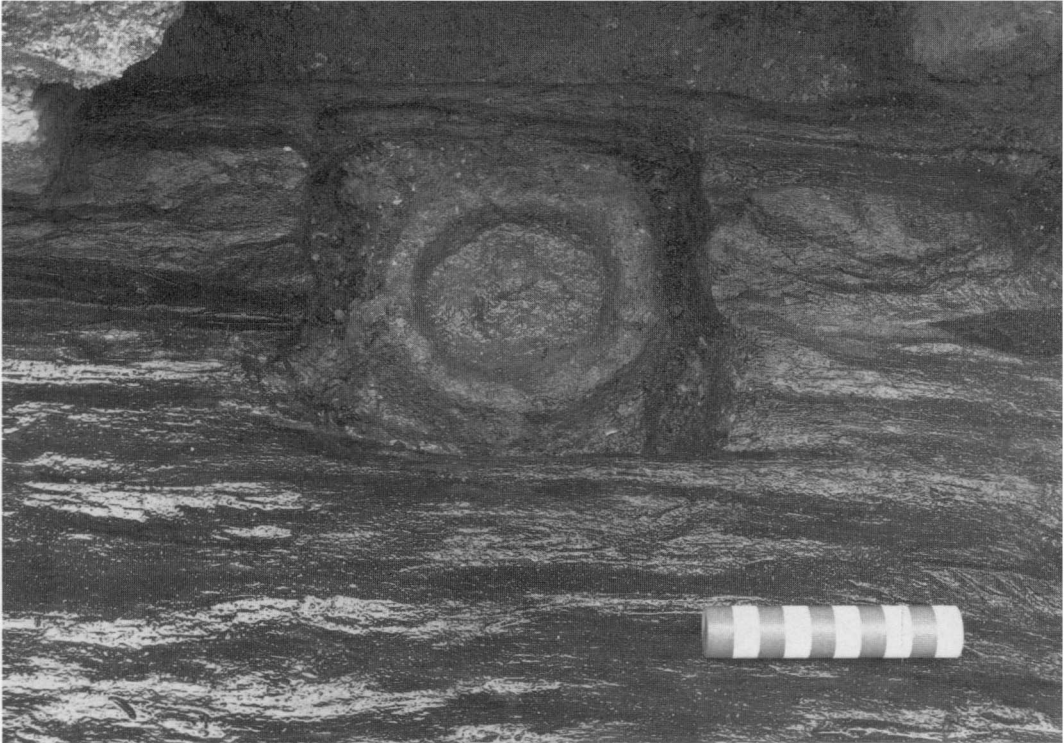


B. London: a coping-stone found near the foot of the arena wall. (p. 56)

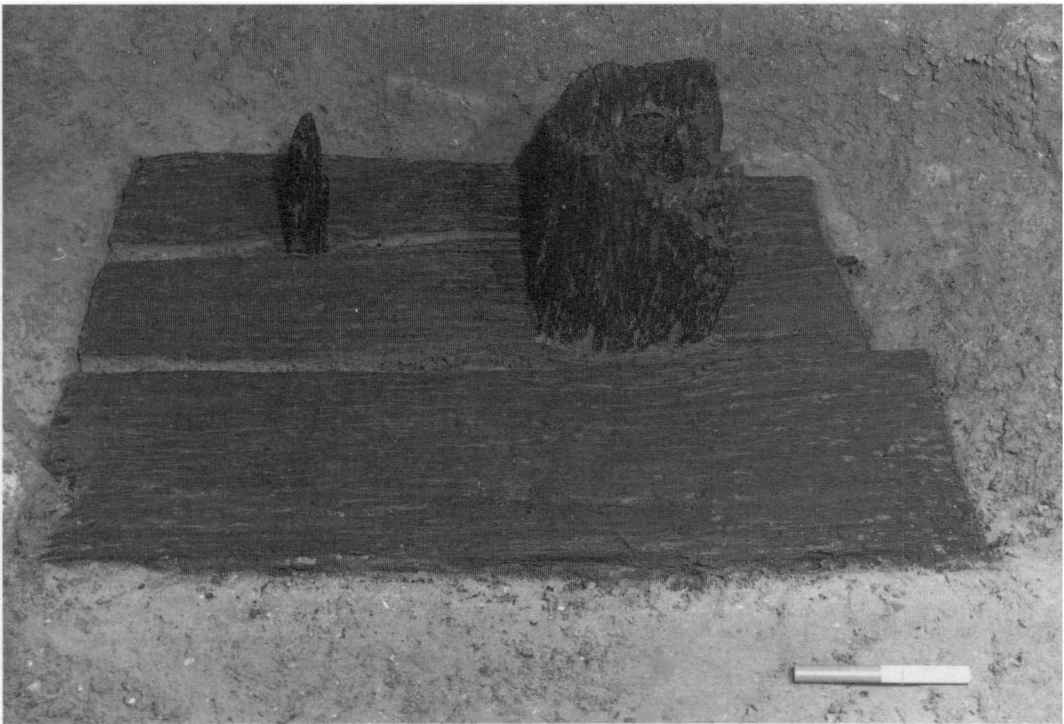


A. London: stamps on the end of a timber post-pad. (p. 54)

PLATE V



A. London: an iron housing set into an entrance-way threshold timber. (p. 56)



B. London: the foot of a timber post on a post-pad. Part of the seating sub-structure? (p. 57)

PLATE VI



B. London: the main axial drain with the plank lid partially removed. (p. 59)



A. London: the stone threshold through the arena wall into one of the *carceres*. (p. 58)



PLATE VII



A. London: a timber drain passing over a plank-lined settling tank. (p. 59)



B. London: the plank lid of the perimeter drain at the foot of the arena wall. (p. 59)

PLATE VIII

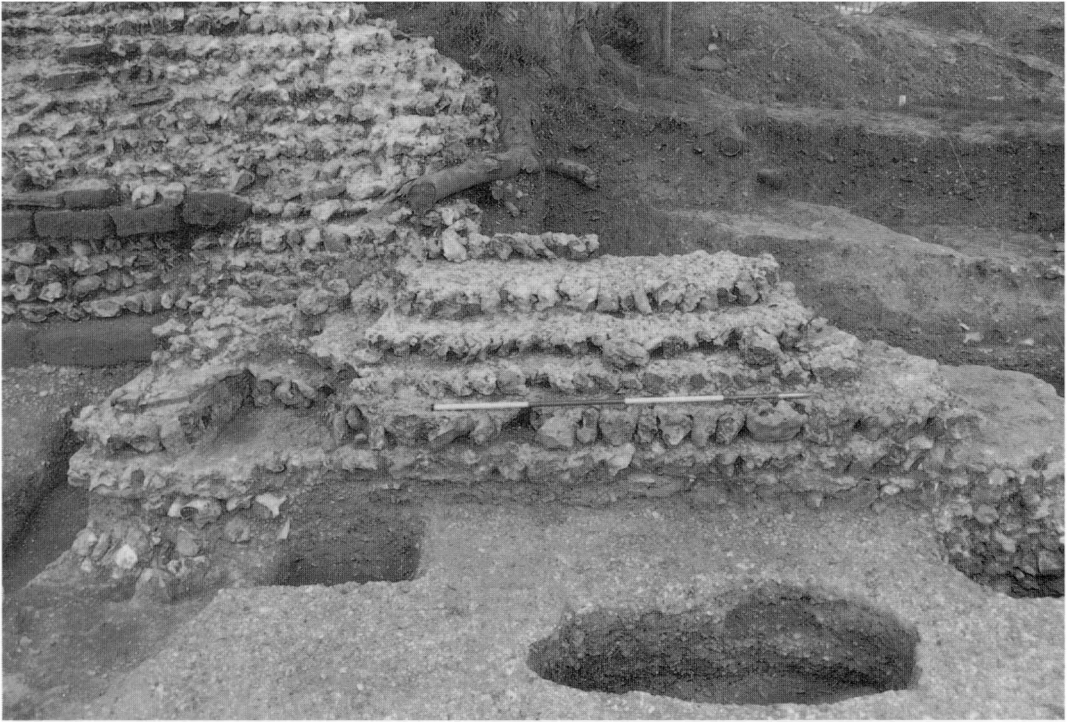


A. Silchester: the North Gate 1991: general view of town wall and gate from the north. (p. 88) *(Photo: M. Fulford)*



B. Silchester: the North Gate 1991: general view of gatehouse and inturns of the town wall from the south. (p. 88) *(Photo: M. Fulford)*

PLATE IX



A. Silchester: the North Gate 1991: inside elevation of eastern footing of the gate. (p. 97) *(Photo: M. Fulford)*



B. Silchester: the North Gate 1991: inside elevation of western footing of the gate. (p. 97) *(Photo: M. Fulford)*

PLATE X



A. Silchester: the North Gate 1991: northern elevation of eastern footing of the gate. (p. 97) *(Photo: M. Fulford)*



B. Silchester: the North Gate 1991: northern elevation of western footing of the gate. (p. 97) *(Photo: M. Fulford)*

PLATE XI



*(Photo: M. Fulford)*

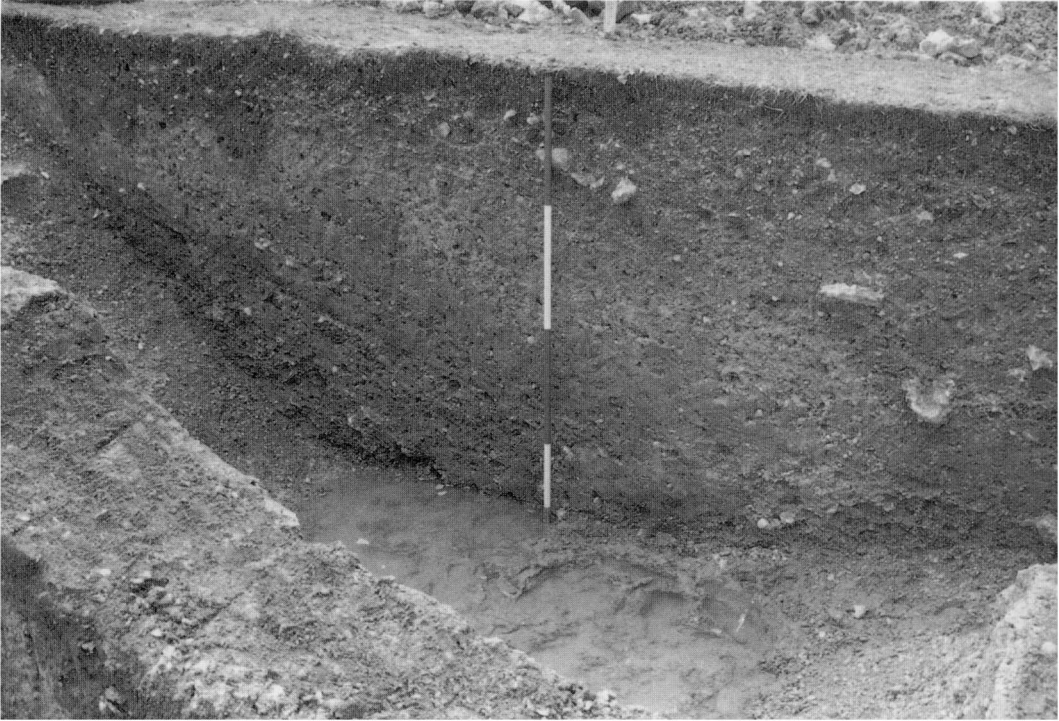
A. Silchester: the North Gate 1991: the late second-/early third-century gatehouse from above. (p. 97)



*(Photo: M. Fulford)*

B. Silchester: the North Gate 1991: north end of the excavated area: the rampart ditch, the late Roman road surface, and associated features. (p. 95)

PLATE XII



A. Silchester: the North Gate 1991: the late second-century rampart ditch and late Roman re-cut. (p. 95) *(Photo: M. Fulford)*



B. Silchester: the North Gate 1991: south section of the excavation (west end). North-south street and associated occupation in course of excavation (FIG. 7). (p. 98) *(Photo: M. Fulford)*

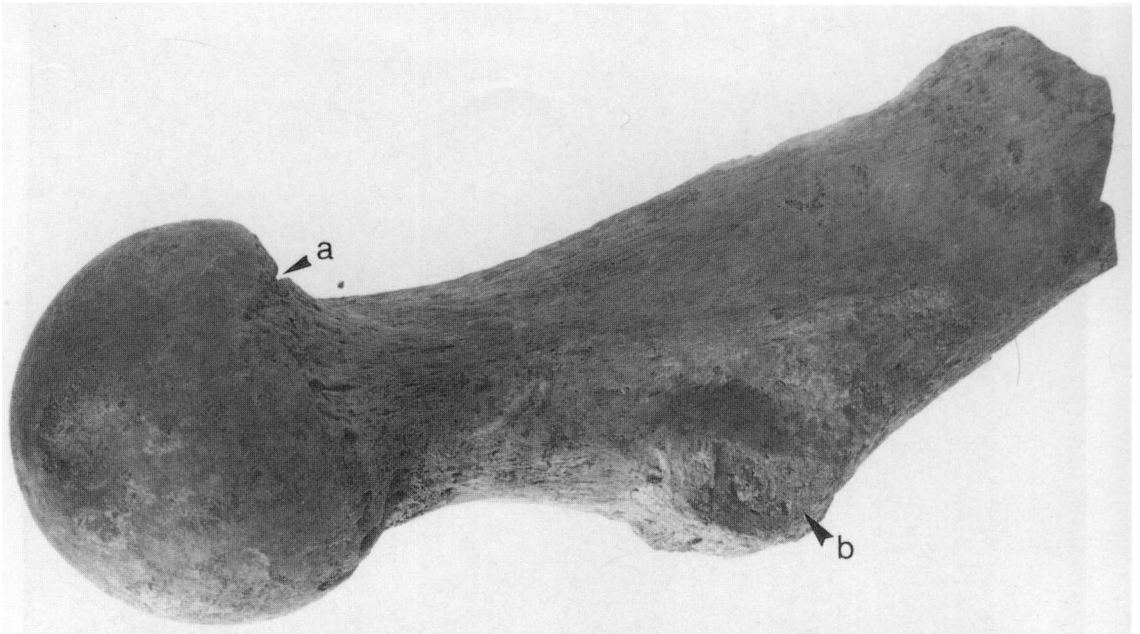
PLATE XIII



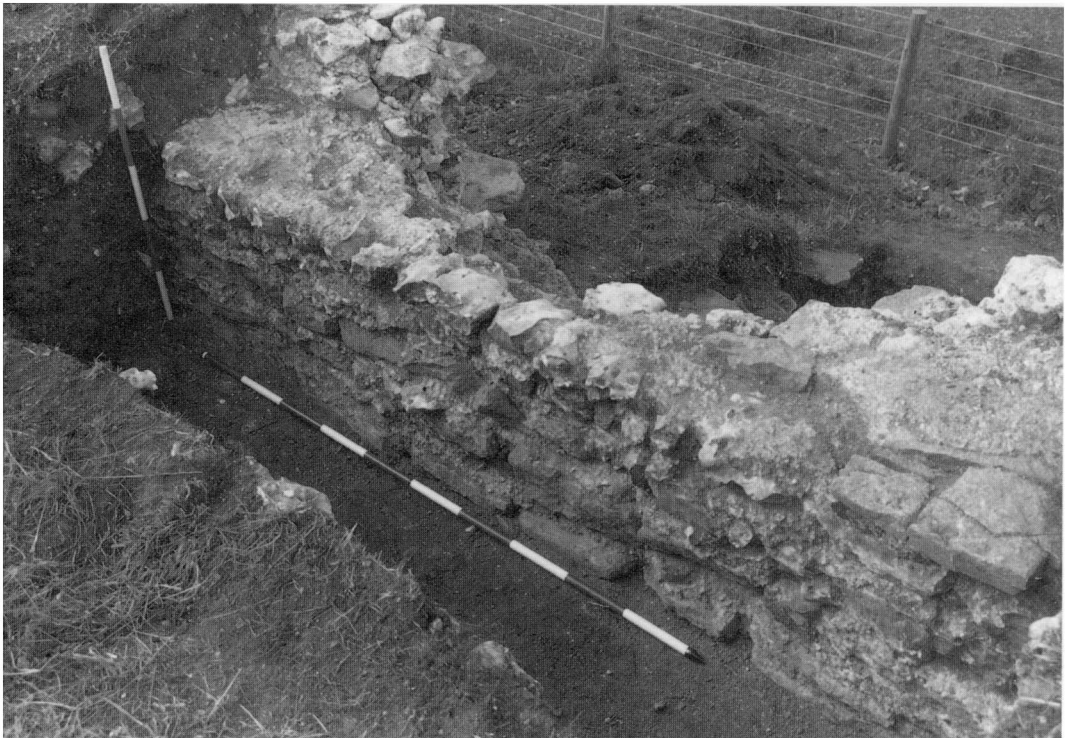
*(Photo: M. Fulford)*

Silchester: the North Gate 1991: cat burial in tile cist (FIG. 11). (p. 103)

PLATE XIV



A. Silchester: the North Gate 1991: human left femur with cut mark (a) and chopped lesser trochanter (b). (p. 130)



B. Silchester Town Wall 1992: Trench 1: internal elevation of the wall. (p. 142) *(Photo: M. Fulford)*



PLATE XV

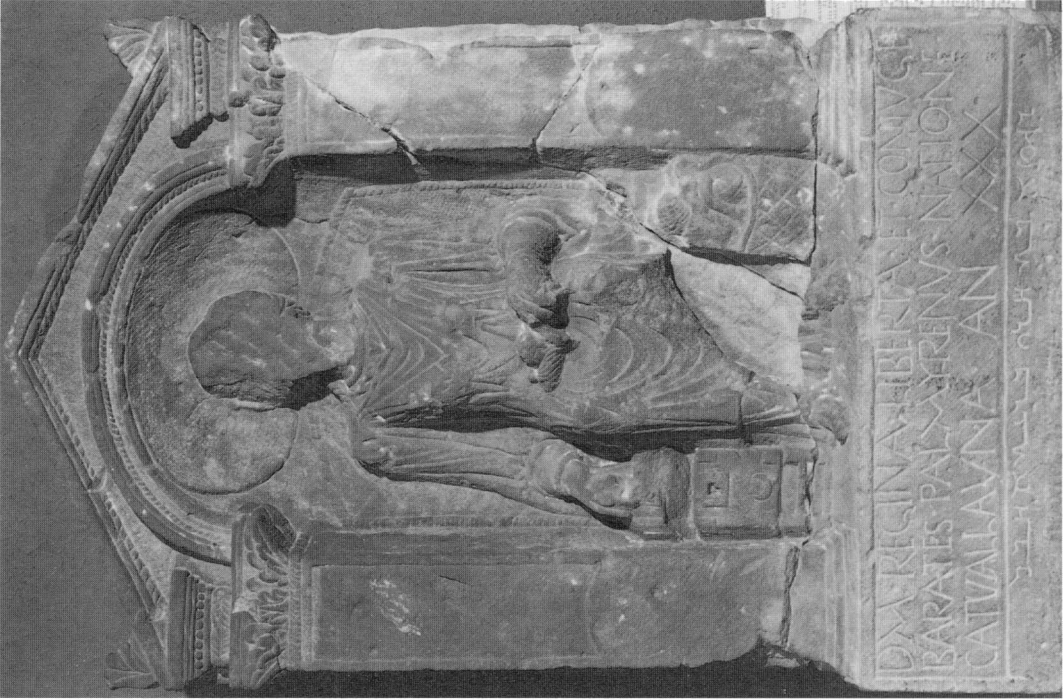


(Photo: M. Fulford)  
B. Silchester Town Wall 1992: Trench 2: internal elevation of the wall from the south-east. (p. 142)



(Photo: M. Fulford)  
A. Silchester Town Wall 1992: Trench 1: remains of wall from the outside showing subsidence and possible gang junction. (p. 142)

PLATE XVI



(Photo: courtesy of Tyne and Wear Museums Service)  
B. Tombstone of Regina (RIB 1065) from South Shields. (p. 252)



(Photo: courtesy of Colchester Museums)  
A. Tombstone of the legionary centurion Marcus Favonius Facilis (RIB 200) from Colchester. (p. 252)

PLATE XVII

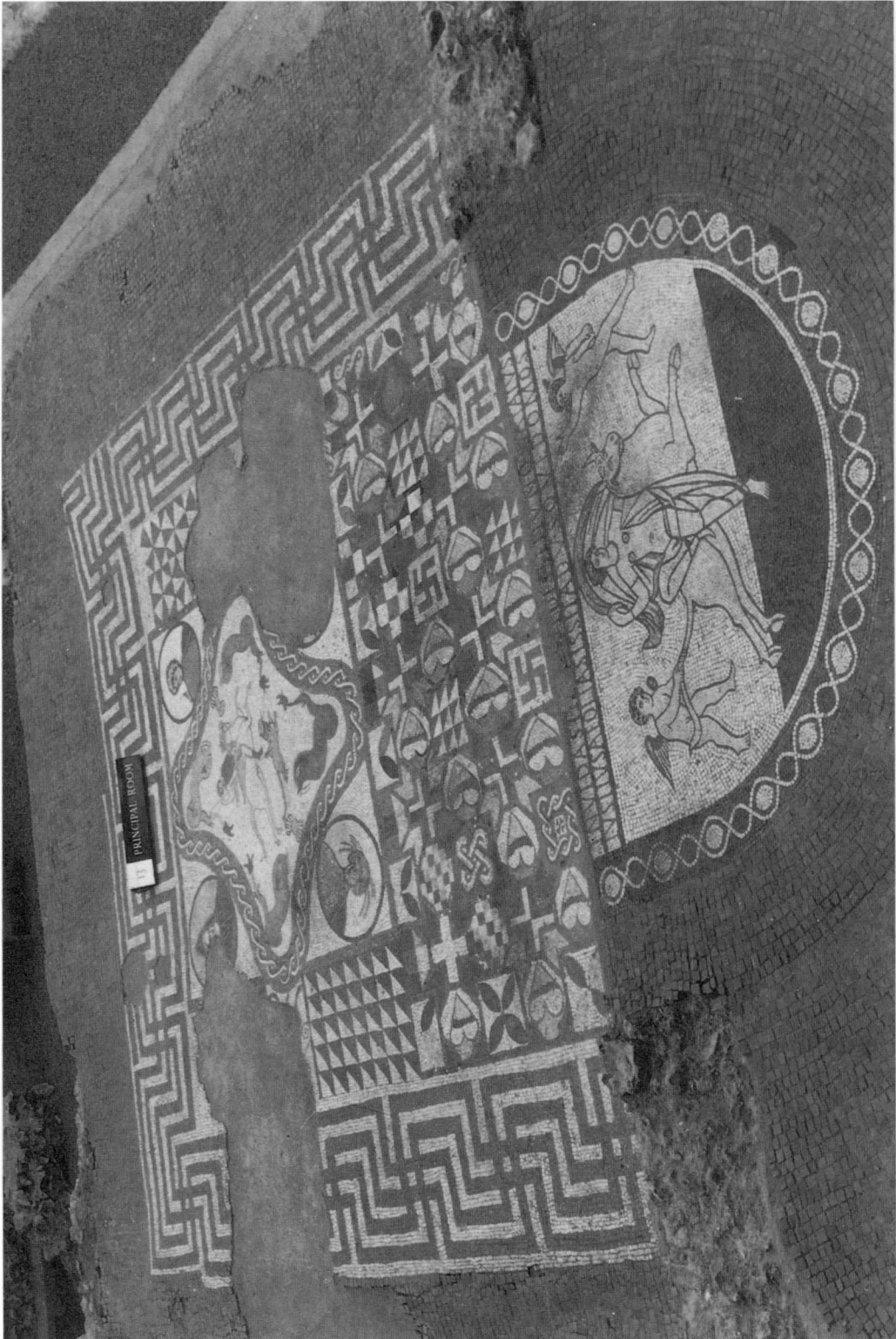


(Photo: courtesy of the Grosvenor Museum, Chester)  
B. Tombstone of Curatia Dinyisia (RIB 562) from Chester. (p. 254)



(Photo: courtesy of the Corinium Museum, Cirencester)  
A. Tombstone of an auxiliary cavalryman Dannicus (RIB 108) from Cirencester. (p. 253)

PLATE XVIII



(Photo: R.J. Ling 2/54)

Lullingstone villa: mosaics of the *triclinium*. (pp. 261, 272, 278, 281)

PLATE XIX



A. Halstock villa: mosaic pavement from Room 2. (pp. 263, 268)

(Photo: E. Flatters)



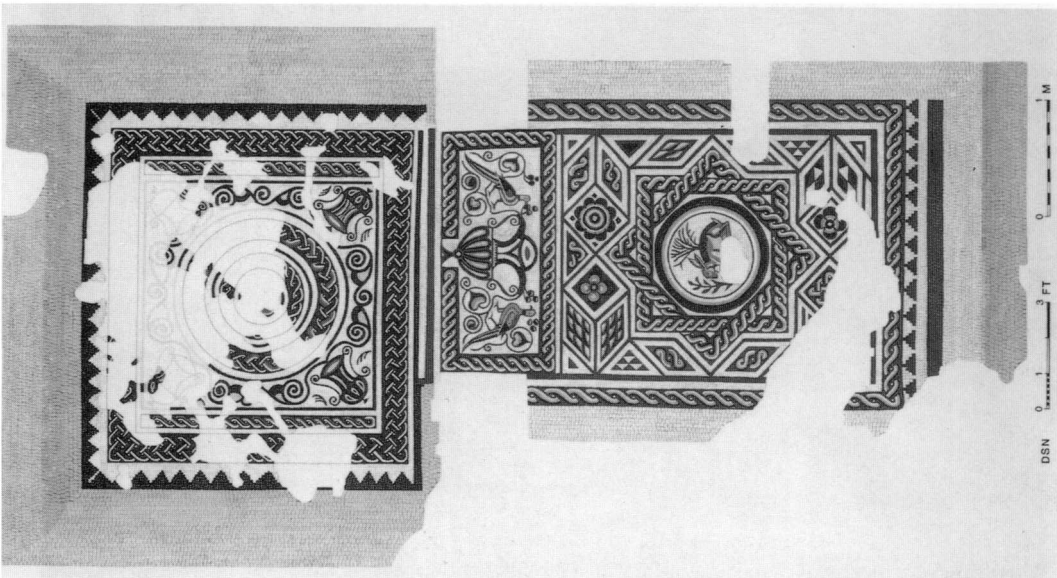
B. Withington villa: section of mosaic pavement with a bust of Neptune, now in the British Museum. (p. 266)

(Photo: Royal Commission on Historical Monuments (England) BB 69/3555: Crown Copyright reserved)

PLATE XX



(Photo: Royal Commission on Historical Monuments (England) BB 7115360; Crown Copyright reserved)  
B. Hinton St Mary villa: detail of mosaic pavement (Dorchester workshop); Bellerophon and the Chimaera. (pp. 262, 266, 278)



(Photo: Royal Commission on Historical Monuments (England) BB 7617167; Crown Copyright reserved)  
A. Cirencester, Building XII, 1: mosaic pavement with crouching hare (drawing by D.S. Neal). (pp. 260, 273)

PLATE XXI



*(Photo: Royal Commission on Historical Monuments (England) CC 711606: Crown Copyright reserved)*

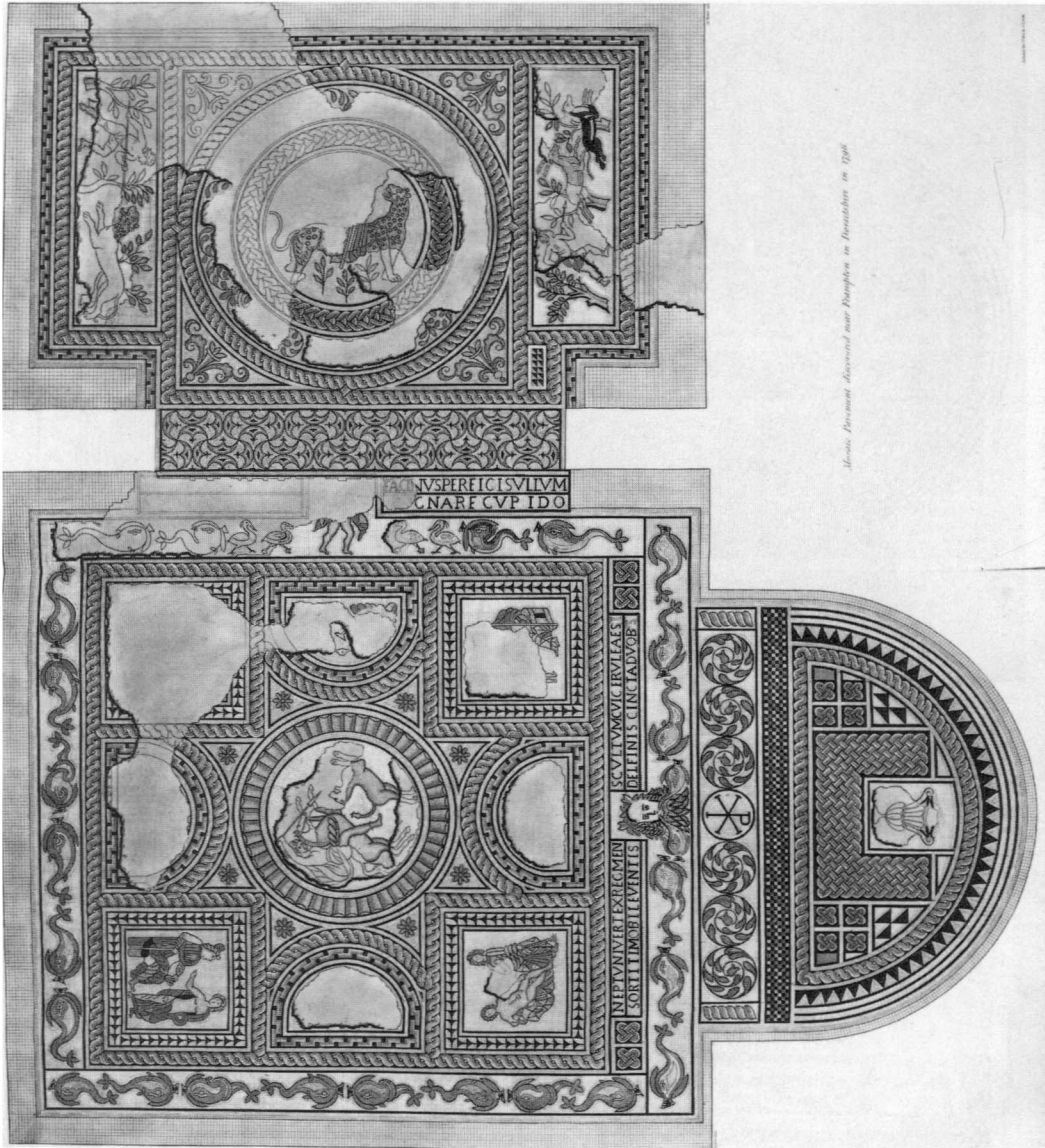
A. Hinton St Mary villa: detail of mosaic pavement (Dorchester workshop):  
bust of Wind. (pp. 262, 266)



*(Photo: Royal Commission on Historical Monuments (England) CC 711610: Crown Copyright reserved)*

B. Hinton St Mary villa: detail of mosaic pavement (Dorchester workshop):  
dog hunting stag. (pp. 262, 266)

PLATE XXII



Frampton villa: mosaic pavement with mythological scenes and chi-rho symbol (coloured engraving by S. Lysons).  
(pp. 262, 266, 274, 278)



PLATE XXIII



(Photo: Dorset Institute of Higher Education)  
Dewlish villa: mosaic pavement in apse of Room 11 (Dorchester workshop). (pp. 263, 266, 280)

PLATE XXIV



(Photo: Royal Commission on Historical Monuments (England) BB 7316864; Crown Copyright reserved)

B. Woodchester, villa: section of Orpheus mosaic pavement (Cirencester Orpheus workshop). (pp. 266f., 272)



(Photo: Royal Commission on Historical Monuments (England) BB 714006; Crown Copyright reserved)

A. Cirencester, Barton Farm villa: section of Orpheus mosaic pavement (Cirencester Orpheus workshop). (pp. 266f.)

PLATE XXV

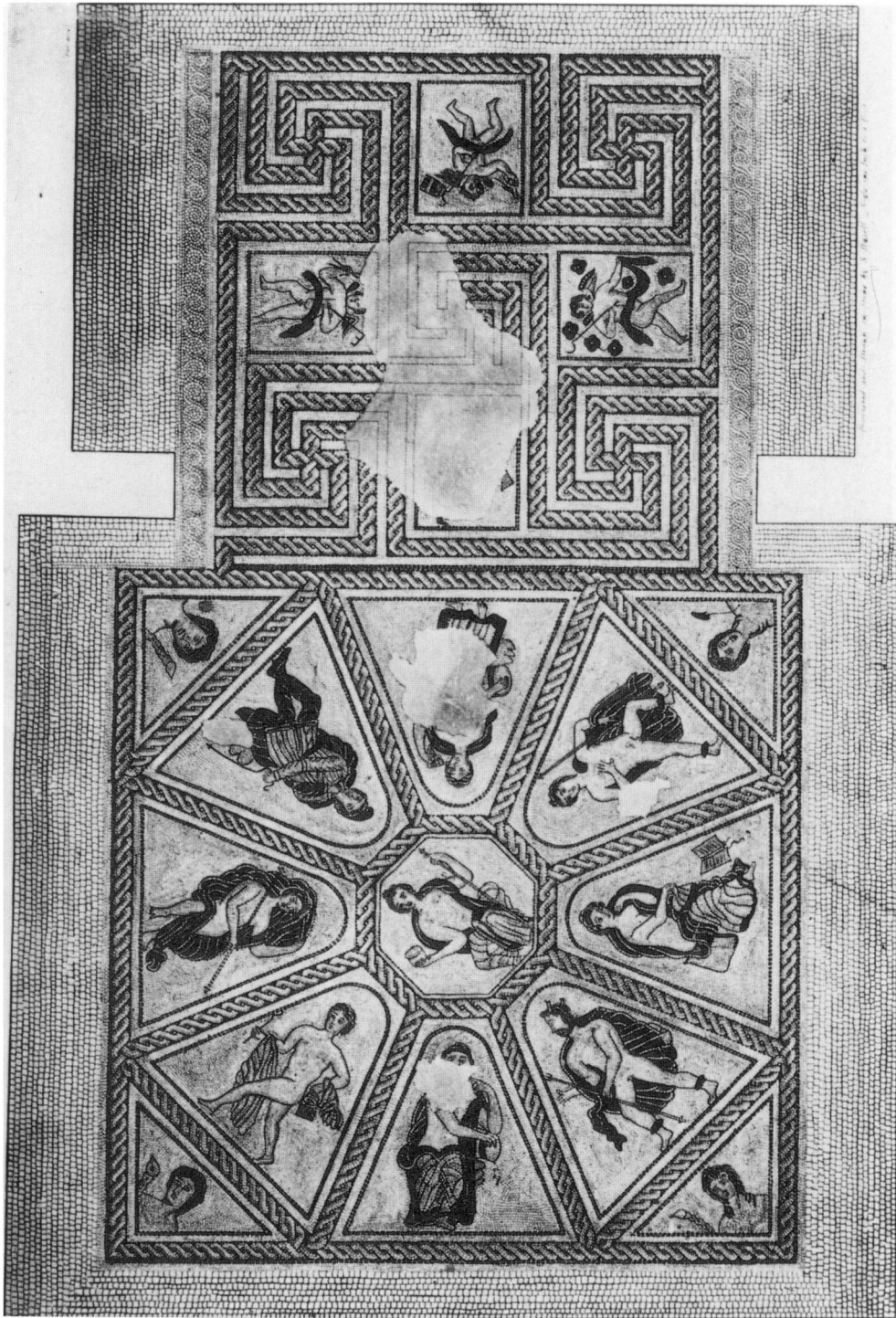


(Photo: *Kantonale Denkmalpflege Zürich*)  
B. Unterlunkhofen (Switzerland): mosaic pavement with sea-bull and dolphins. (p. 268)



(Photo: *David Baker; courtesy of Sussex Archaeological Society*)  
A. Fishbourne villa: mosaic pavement of Room N 7: Cupid riding a dolphin. (pp. 268, 270)

PLATE XXVI



*(Photo: University Library, Newcastle upon Tyne)*  
Pitney villa: mosaic pavement with mythological subjects (coloured engraving by S. Hasell).  
(pp. 272, 273, 274, 276, 278)

PLATE XXVII



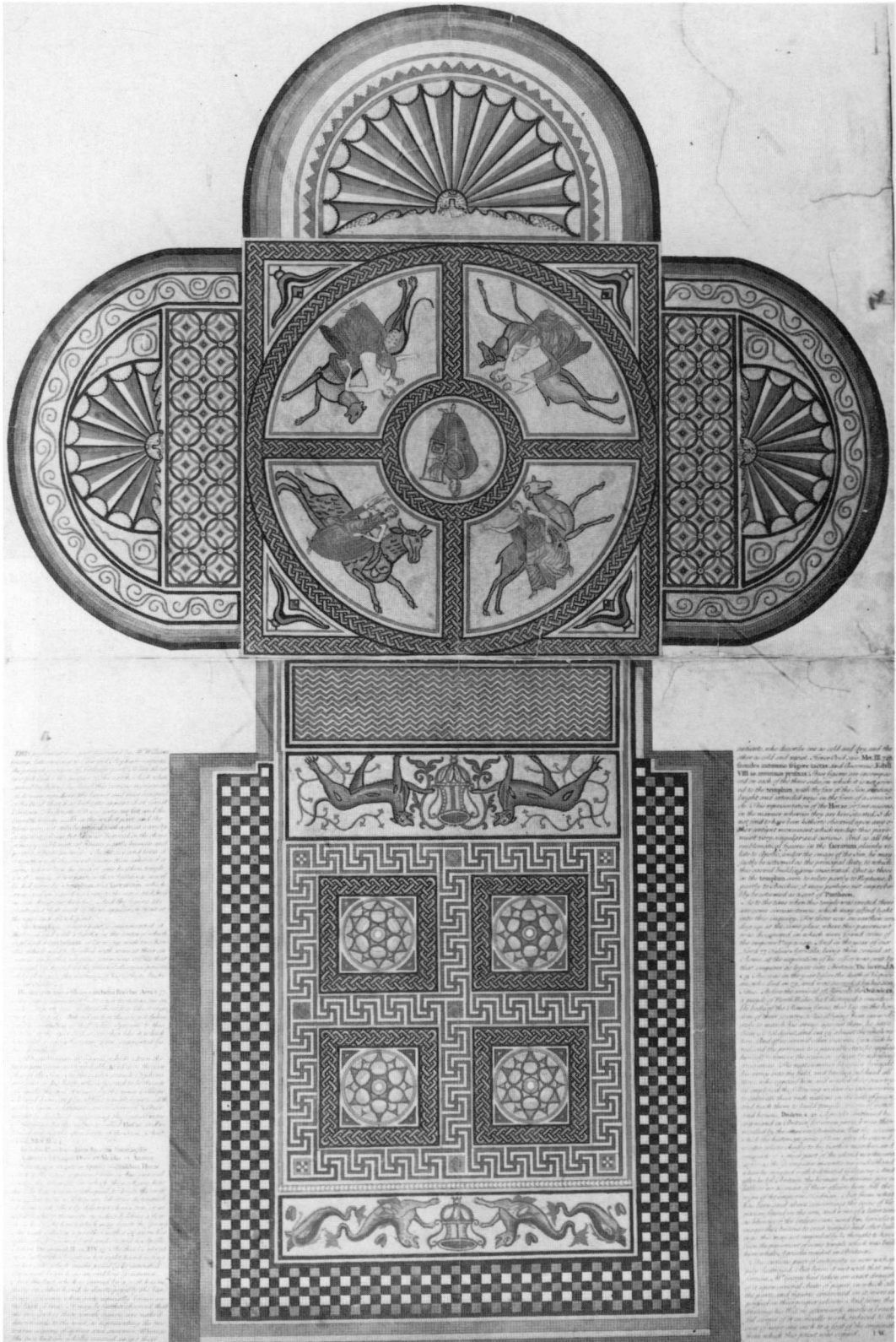
*(Photo: R.J. Ling 64/20A)*

A. Verulamium, Building XXI, 2: detail of mosaic pavement: lion devouring a stag's head. (pp. 261, 272)



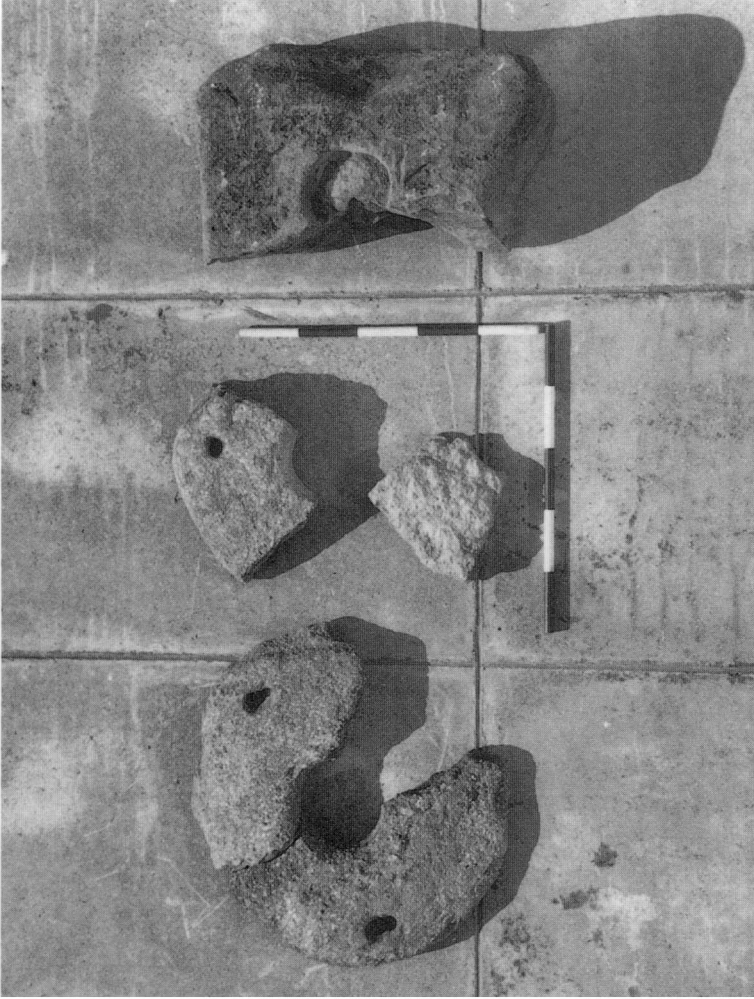
*(Photo: Royal Commission on Historical Monuments (England) BB 76/2869: Crown Copyright reserved)*

B. Rudston villa: mosaic pavement with Venus and Triton(?), before lifting. (pp. 281, 283)



Littlecote Park, mosaic pavement (coloured engraving by G. Vertue). (pp. 264, 279f., 283)

PLATE XXIX

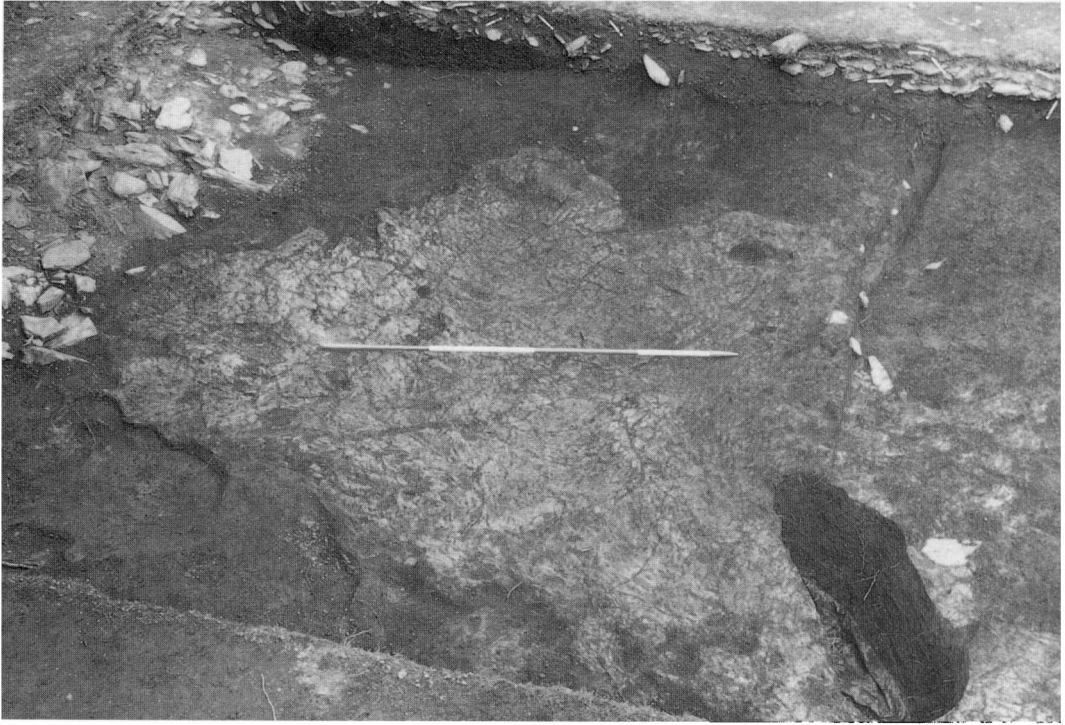


B. Dolaucothi. Fragments of circular millstones and a possible axle stone. That recovered from the excavations in 1992 is featured lower centre. (p. 334)



A. Dolaucothi. Detail of Carreg Pumsaint. (p. 328)

PLATE XXX



A. Dolaucothi. Detail of clay spread [77] looking north (scale 2m). (p. 331)



B. Dolaucothi. Detail of clay spread [172] and of stratigraphic sequence in south section (scale 2m). (p. 331)



PLATE XXXI



*(Photo: courtesy of RCHME)*  
Black Field (*Cunetio*). View from the west showing the ditches of the earthen defences. The position of the south gate is clearly visible. (NMR 2123/1019/SU2169/35, July 1982). (p. 341)

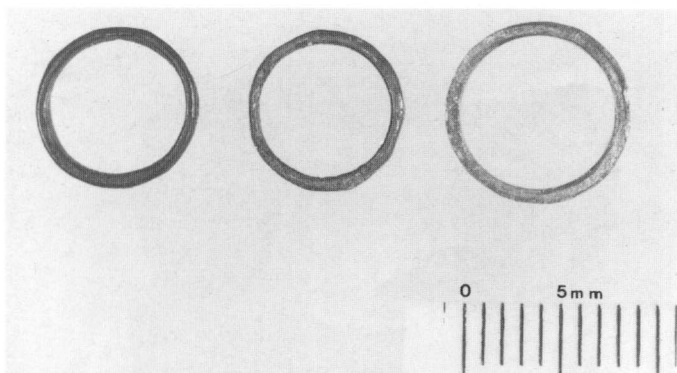
PLATE XXXII



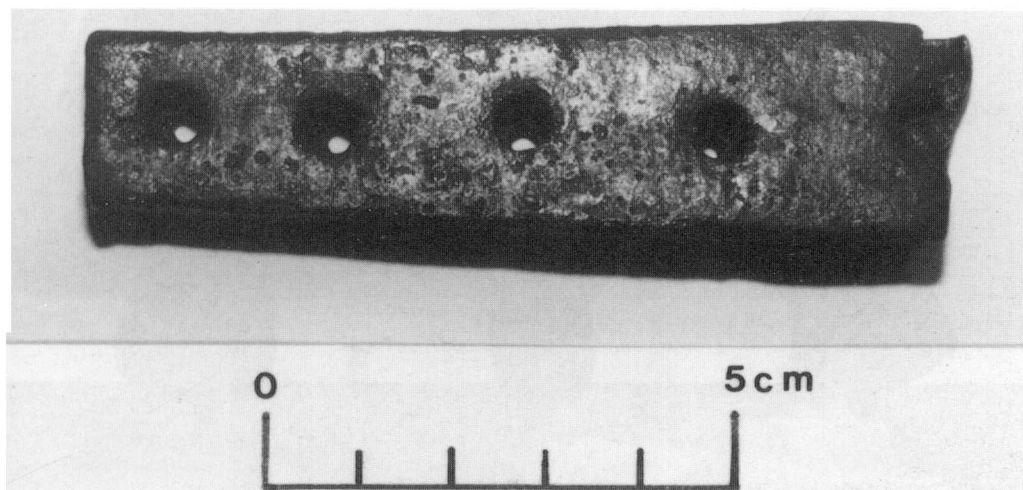
(Photo: courtesy of RCHME)

Black Field (*Cunetio*). View from the east showing streets, buildings and fourth-century defences. Note the minor streets in the foreground, laid out at right-angles to the road approaching from the direction of Silchester. (NMR 4526/42 SU2169/65, July 1989). (p. 344)

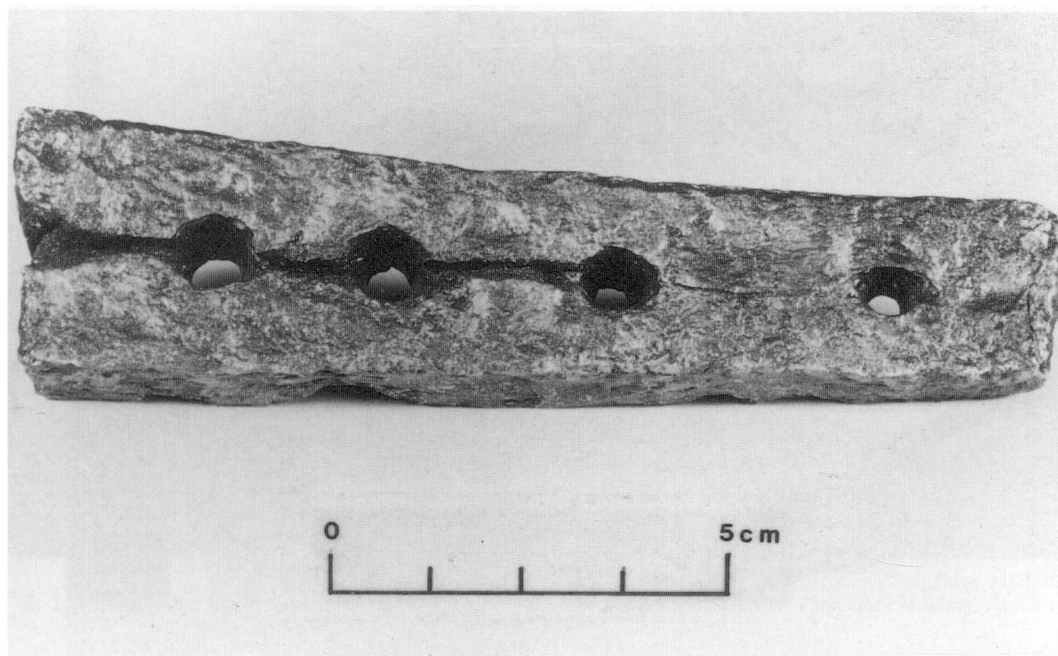
PLATE XXXIII



A. Rings on the left and centre are originals from Thorsberg, the ring on the right was produced experimentally. (p. 363)



B. Draw-plate from the Roman fort of Vindolanda. (p. 368)



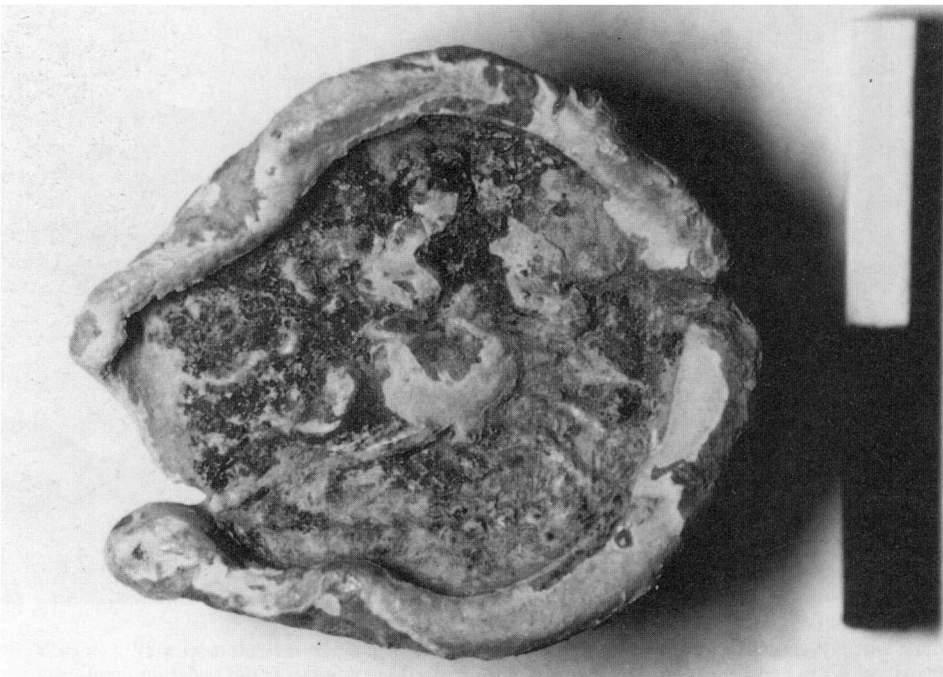
C. Draw-plate from Altena (Germany). (p. 368)

PLATE XXXIV



*(Photo: R. Wilkins, Institute of Archaeology, Oxford)*

A. A toilet-knife handle from near Hambleton, North York moors (scale 2:1). (p. 353)



B. A Roman lead sealing from Goodnestone near Canterbury. (p. 383)

PLATE XXXV



(Photo: Glamorgan-Gwent Archaeological Trust)  
A. The Abernant kiln, Bulmore. (p. 401)



(Photo: MOLAS)  
B. Lloyd's Register, London: traces of timber floor joists within the sunken room of a masonry building. (p. 435)

PLATE XXXVI



A. Suffolk House, London: timber elements of a landward tieback for an assumed N-S inlet in the first-century Roman quay. (p. 436)  
(Photo: MOLAS)

B. Great Dover Street, Southwark: one of several mid-second- to mid-third-century burials; this burial was found in a corner of a large rectangular feature containing a number of pots and a glass vessel. It had been disturbed at a later date. (p. 442)  
(Photo: MOLAS)



PLATE XXXVII



*(Photo: courtesy of R. White)*

Mosaic from Whitley Grange villa, Hookgate (p. 425)

PLATE XXXVIII



*(Photo: Hampshire County Museums)*  
Hamble estuary: inscribed lead tablet (p. 455, No. 1). Width of tablet 84 mm.



PLATE XXXIX



*(Photo: Arbeia Roman Fort and Museum)*

A. South Shields: lead sealing (p. 466, No. 35), reverse. Width of original 18 mm.



*(Photo: Arbeia Roman Fort and Museum)*

B. South Shields: lead sealing (p. 466, No. 36). Width of original 28 mm.

PLATE XL



*(Photo: R.L. Wilkins)*

A. Caerleon: inscribed lead tag (p. 468, No. 40), obverse.  
Width of original 27 mm.



*(Photo: R.L. Wilkins)*

B. Caerleon: inscribed lead tag (p. 468, No. 40), reverse.  
Width of original 27 mm.

PLATE XLI



A. Caerleon: inscribed lead tag (p. 468, No. 41), obverse. Width of original 44 mm. (Photo: R.L. Wilkins)



A. Caerleon: inscribed lead tag (p. 468, No. 41), reverse. Width of original 44 mm. (Photo: R.L. Wilkins)

PLATE XLII



(Photo: R.L. Wilkins)  
A. Caerleon: inscribed lead tag (p. 469, No. 42), obverse.  
Width of original 25 mm.



(Photo: R.L. Wilkins)  
B. Caerleon: inscribed lead tag (p. 469, No. 43), obverse. Width of original 33 mm.

**BRITANNIA MONOGRAPHS** ISSN 0953-542X

**Roman Mosaics in Britain** No. 1 out of print

**Skeleton Green: A Late Iron Age and Romano-British Site** No. 2

Clive Partridge

1981, 359 pp., 15 pls, paperback ISBN 0 907764 00 2 £6/US\$12

**Wall-Painting in Roman Britain** No. 3

Norman Davey and Roger Ling

1982, 231 pp., 123 illus., 1 fiche, paperback ISBN 0 907764 15 0 £8/US\$16

**Vindolanda: The Latin Writing-Tablets** No. 4 out of print

**Silchester: Excavations on the Defences 1974-80** No. 5

Michael Fulford

1984, 301 pp., 91 figs, paperback ISBN 0 907764 03 7 £9/US\$18

**Inchtuthil: The Roman Legionary Fortress —**

**Excavations 1952-65** No. 6

Lynn F. Pitts and J.K.S. St Joseph

1985, 344 pp., 47 pls, 102 figs, paperback ISBN 0 907764 05 3 £9/US\$18

**Baldock: The Excavation of a Roman and Pre-Roman**

**Settlement, 1968-72** No. 7

I.M. Stead and Valery Rigby

1986, 435 pp., 160 figs, paperback ISBN 0 907764 16 9 £10/US\$20

**Longthorpe II: The Military Works Depot: an Episode in**

**Landscape History** No. 8

G.B. Dannell and J.P. Wild

1987, 206 pp., 75 illus., paperback ISBN 0 907764 08 8 £8/US\$16

**Strageath: Excavations within the Roman Fort, 1973-86** No. 9

S.S. Frere and J.J. Wilkes

1989, 360 pp., 134 figs, 40 pls, paperback ISBN 0 907764 11 8 £10/US\$20

**The Silchester Amphitheatre: Excavations of 1979-85** No. 10

Michael Fulford

1989, 248 pp., 84 figs, 40 pls, paperback ISBN 0 907664 12 6 £10/US\$20

**Research on Roman Britain: 1960-89** No. 11

Edited Malcolm Todd

1989, 271 pp., 60 illus., paperback ISBN 0 907764 13 4 £11/US\$22

**Leucarum: Excavations at the Roman Auxiliary Fort at Loughor, West Glamorgan, 1982-4 and 1987-8**

A.G. Marvell and H.S. Owen-John

1997, 448 pp. incl. 155 line drawings, 26 pls, paperback  
ISBN 0 907664 21 5 £45/US\$90

**JOURNAL OF ROMAN STUDIES MONOGRAPHS** ISSN 0951-6549

**Aphrodisias and Rome** No. 1

Joyce Reynolds

1982, 214 pp., 32 pls, hardback ISBN 0 907764 00 2 £15/US\$30

**Excavations at Sabratha 1948-1951** No. 2

Philip M. Kenrick

1986, 326 pp., 64 pls, hardback ISBN 0 907764 07 X £15/US\$30

**Arable Cultivation in Roman Italy** No. 3

Out of print

**Monumenta Asiae Minoris Antiqua (MAMA) IX: Monuments from the Aezanitis** No. 4

Edited B. Levick, S. Mitchell, J. Potter and M. Waelkens

1988, 209 pp., 48 pls, 2 maps, hardback  
ISBN 0 907764 10 X £15/US\$30

**Aphrodisias in Late Antiquity** No. 5

Out of print

**Performers and Partisans at Aphrodisias** No. 6

Charlotte Roueché

1993, 285 pp., 24 pls, hardback ISBN 0 907764 17 7 £34/US\$68

**Monumenta Asiae Minoris Antiqua (MAMA) X** No. 7

Edited B. Levick and S. Mitchell

1993, 248 pp., 56 pls, hardback ISBN 0 907764 18 5 40/US\$80

**MAMA IX and MAMA X** Nos 4 and 7 together £45/\$90

**Nicopolis ad Istrum: a Roman, Late Roman and Early Byzantine City: Excavations 1985-1992. Vol.1**

No. 8 Andrew Poulter

1995, 338 pp. incl. 118 line drawings, 46 pls, 3 fold-outs, hardback  
ISBN 0 907764 20 7 £42/US\$84

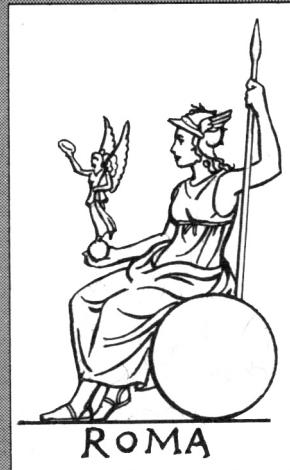
The prices above apply only to orders made direct to:

The Roman Society, Senate House, Malet Street, London WC1E 7HU

All prices include postage & packing. Cash with order or pro-forma invoice

Cheques payable to the Roman Society—Post Office Giro Account No. 58 743 4201

**ROMAN  
SOCIETY**



**PUBLICATIONS**

Published by the Society for the Promotion of Roman Studies  
Senate House, Malet Street, London WC1E 7HU