

# An updated checklist of the marine Decapoda of Ascension Island, central Atlantic Ocean

S. DE GRAVE<sup>1</sup>, A. ANKER<sup>2</sup>, P.C. DWORSCHAK<sup>3</sup>, P.F. CLARK<sup>4</sup> AND P. WIRTZ<sup>5</sup>

<sup>1</sup>Oxford University Museum of Natural History, Oxford, UK, <sup>2</sup>Tropical Marine Science Institute, National University of Singapore, 18 Kent Ridge Road, Singapore 119227, Republic of Singapore, <sup>3</sup>Naturhistorisches Museum Wien, Burgring 7, A-1010 Wien, Austria, <sup>4</sup>Department of Life Sciences, The Natural History Museum, London SW7 5BD, UK, <sup>5</sup>Centro de Ciências do Mar, Universidade do Algarve, P-8000-117 Faro, Portugal

The decapod Crustacea from Ascension Island are reported upon on the basis of major expeditions undertaken during 2008 and 2012, including several minor additional collections made in other years. Two species, *Gnathophyllum americanum* and *Corallianassa longiventris* are new records for the island bringing the total known marine decapod fauna to 75 species, of which 11 are currently endemic to Ascension Island.

**Keywords:** Ascension Island, Crustacea, marine Decapoda, checklist

Submitted 11 May 2014; accepted 7 August 2014; first published online 23 September 2014

## INTRODUCTION

Ascension Island is an isolated landmass in the central Atlantic Ocean, about 3000 km east of Brazil and 3000 km west of Africa, with the nearest neighbour being St Helena, about 1300 km to the south. The island has been visited by numerous early scientific expeditions, with the first decapod, *Grapsus adscensionis* (Osbeck, 1765) being recorded by Linnaeus (1754, as *Cancer retusus* Linnaeus, 1754). Over the ensuing decades, knowledge of the decapod fauna accumulated piecemeal, but was considerably enhanced by incidental collections sent to the late Ray Manning (United States National Museum, Smithsonian Institution, Washington DC) in 1970, which not only led to the description of two endemic taxa (see Chace & Manning, 1972), but also resulted in two expeditions to the island by him and colleagues in 1971 and 1976. Accumulated knowledge of the decapod fauna of the island based on all collected material up to 1985 was summarized in the monograph of Manning & Chace (1990). Since then, only two additional species have been recorded, *Alpheus cedrici* Anker & De Grave, 2012 and *Typton holthuisi* De Grave, 2010 based on the 2008 Oxford University Museum of Natural History (OUMNH) expedition to the island. The present contribution reports on the other decapod species collected during the OUMNH 2008 expedition as well as further taxa collected during a 2012 expedition led by P. Brickle (Shallow Marine Surveys Group). Additionally, a number of specimens donated to OUMNH over the years are reported upon, as is a small, but significant, collection by P. Wirtz during 2014. Some of the material resulting from the 2008 expedition has already been reported upon (De Grave, 2010;

Anker & De Grave, 2012) and is not further treated. All material examined is deposited in OUMNH, the Natural History Museum, London (NHMUK), Naturhistorisches Museum, Vienna (NHMW) or the Lee Kong Chian Natural History Museum (ex. Raffles Museum of Biodiversity Research), National University of Singapore (ZRC).

Much of the intertidal and subtidal coastline on Ascension is inaccessible, consequently the majority of collections were made at only a limited number of locations (Figure 1) with their geographical coordinates listed in Table 1.

Under each species treated, only the first record is listed for Ascension, fuller synonymies can be found in Manning & Chace (1990). An update of the known marine decapod fauna of the island is provided (Table 2), extending the species list in Manning & Chace (1990), with up to date nomenclature.

Size measurements: Size of carideans and stenopodideans was measured between the post-orbital margin and the posterior end of the carapace, along the dorsal line (pocl) for non-alpheids or including the rostrum (cl) for alpheids; brachyurans as carapace width (cw); paguroids as shield length (sl); callianassids as total length (tl) and carapace length (cl); and hippids as carapace length (cl); all measurements being in mm.

Abbreviations: female (♀); male (♂); ovigerous (ov.); juvenile (juv.); individual (ind.); including (incl.) and field collection numbers (fcn), the latter only given when known.

## RESULTS

Order DECAPODA Latreille, 1802  
Infraorder STENOPODIDEA Spence Bate, 1888  
Family STENOPODIDEA Claus, 1872  
*Odontozona anaphorae* Manning & Chace, 1990  
(Figure 2A, B)

Manning & Chace, 1990, p. 29; figures 14–15

**Corresponding author:**

S. De Grave

Email: sammy.degrave@oum.ox.ac.uk

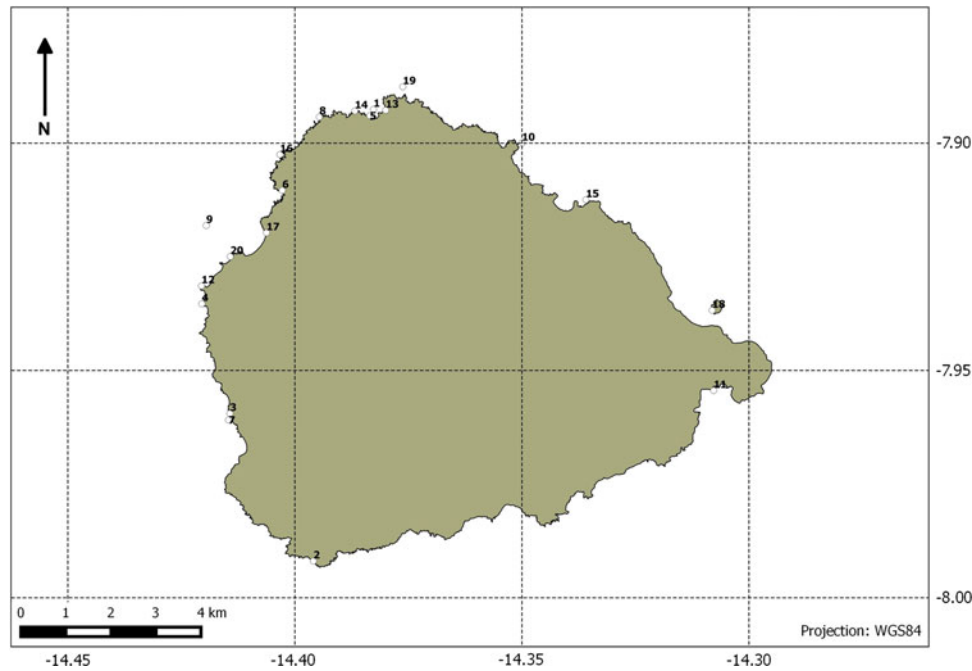


Fig. 1. Map of Ascension Island, showing sampling locations.

#### MATERIAL EXAMINED

fcn C41/003, 2 ov. ♀, pochl, 4.6, 4.7, 1 ♂, pochl 4.5, western side of English Bay, in lava tube, 13 m, 4 September 2012, OUMNH.ZC.2014.03.01/02/03.

#### REMARKS

This endemic species to Ascension was previously only known from the male holotype, collected in 1980 off North Point (Manning & Chace, 1990). The present specimens demonstrate considerable variation in carapace and pereopod spination, but are consistent with the diagnosis of the

species. The previously unknown colour pattern is illustrated in Figure 2A, B.

*Stenopus hispidus* (Olivier, 1811)

Manning & Chace, 1990, p. 31

#### MATERIAL EXAMINED

fcn ASC-009/010, 1 ♂, pochl 6.5, 1 ♀, pochl 7.3, west side of English Bay, hand collecting under ledge, 10 m, 10 April 2008, OUMNH.ZC.2008.11.82/83.

Infraorder CARIDEA Dana, 1852  
Family ALPHEIDAE Rafinesque, 1815  
*Alpheus bouvieri* A. Milne Edwards, 1878

Manning & Chace, 1990, p. 14.

#### MATERIAL EXAMINED

fcn ASC-013/014, 1 ov. ♀, pochl 10.0, 1 ♀, pochl 4.7, east side of English Bay, in outfall stream of desalination plant, intertidal, 10 April 2008, OUMNH.ZC.2008.11.024/028; fcn ASC-068, 1 ♀, pochl 3.6, English Bay, North Point, in rock pools, intertidal, 14 April 2008, OUMNH.ZC.2008.11.009; 2 juv., same location, 17 April 2008, OUMNH.ZC.2008.11.0008; fcn ASC-098, 7 ind., incl. ov. ♀, pochl 3.0–4.0, Shelly Beach, intertidal pools, 16 April 2008, OUMNH.ZC.2008.11.025/055; 1 ♀, pochl 5.5, Turtle Beach Point, from algal clumps, intertidal, 11 April 2008, OUMNH.ZC.2008.11.054; 3 juv., Collyer Point, by blowhole, intertidal, 15 April 2008, OUMNH.ZC.2008.11.059.

*Alpheus cedrici* Anker & De Grave, 2012

Anker & De Grave, 2012, p. 2; figures 1–3.

#### MATERIAL EXAMINED

fcn C37/006, 1 ♀, cl 6.0, Mars Bay, 15.1 m, 2 September 2012, OUMNH.ZC.2014.03.012; fcn SP3/002, 1 ♀, cl 10.3, off Wigan

Table 1. Geographic coordinates of sampling locations.

Location name	Latitude	Longitude
1 English Bay	-7.89257	-14.38268
2 Shelly Beach	-7.99192	-14.39593
3 Turtle Beach	-7.959463	-14.414309
4 Collyer Point	-7.935336	-14.420482
5 Wigan Pier	-7.893967	-14.3835
6 Comfortless Cove	-7.910396	-14.40278
7 McArthur Point	-7.960876	-14.414595
8 Red Rock	-7.894233	-14.3946
9 The Arches	-7.918117	-14.419517
10 Porpoise Point	-7.9	-14.35
11 South-East Bay	-7.954414	-14.307776
12 Catherine Point	-7.931388	-14.420561
13 Darby Beach	-7.89275	-14.38
14 Two Hooks	-7.892917	-14.3868
15 North East Bay	-7.91245	-14.3359
16 Pyramid	-7.902517	-14.403283
17 Long Beach	-7.919717	-14.40625
18 Boatswain Bird Island	-7.936767	-14.3081
19 Sudan Wreck	-7.8876	-14.376217
20 Georgetown Pier	-7.924944	-14.414223

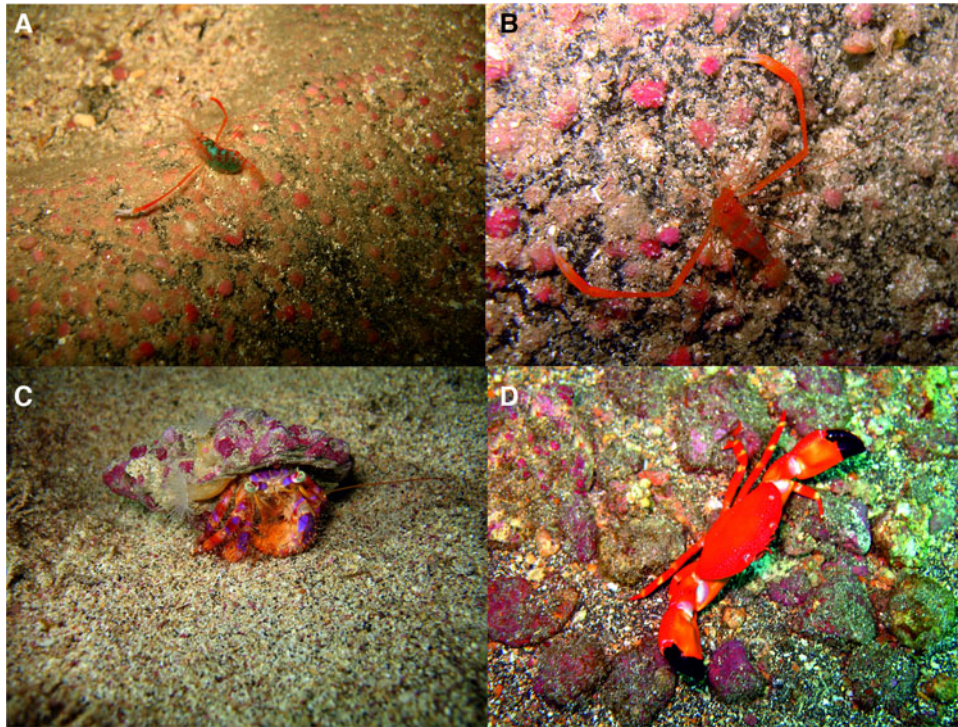
**Table 2.** Species of marine Decapoda recorded from Ascension Island. The first record from the island is indicated, as well as their general biogeographic distribution.

	Species	First record	Distribution
<i>Dendrobranchiata</i>			
Penaeidae	<i>Metapenaeopsis gerardoi</i> Pérez Farfante, 1971	Manning & Chace (1990)	Western and central Atlantic
<i>Stenopodidea</i>			
Spongicolidae	<i>Microprosthema inornatum</i> Manning & Chace, 1990	Manning & Chace (1990)	Endemic
Stenopodidae	<i>Odontozona anaphorae</i> Manning & Chace, 1990	Manning & Chace (1990)	Endemic
	<i>Stenopus hispidus</i> (Olivier, 1811)	Manning & Chace (1990)	Pantropical-subtropical
<i>Caridea</i>			
Alpheidae	<i>Alpheus bouvieri</i> A.Milne Edwards, 1878	Manning & Chace (1990)	Amphi-Atlantic, tropical
	<i>Alpheus cedrici</i> Anker & De Grave, 2012	Anker & De Grave (2012)	Endemic
	<i>Alpheus crockeri</i> (Armstrong, 1941)	Manning & Chace (1990)	Pantropical (?)
	<i>Alpheus dentipes</i> Guérin, 1832	Manning & Chace (1990)	Central and eastern Atlantic
	<i>Alpheus holthuisi</i> Ribeiro, 1964	Manning & Chace (1990)	Central and eastern Atlantic
	<i>Alpheus macrocheles</i> (Hailstone, 1835)	Manning & Chace (1990)	Central and eastern Atlantic
	<i>Alpheus paracrinitus</i> Miers, 1881	Ortmann (1893), as <i>Alpheus ascensionis</i>	Pantropical, species complex
	<i>Automate dolichognatha</i> De Man, 1888	Manning & Chace (1990)	Pantropical, species complex
	<i>Metalpheus paragracilis</i> (Coutière, 1897)	Manning & Chace (1990)	Pantropical
	<i>Metalpheus rostratipes</i> (Pocock, 1890)	Manning & Chace (1990)	Pantropical
	<i>Parabetaeus hummelincki</i> (Schmitt, 1936)	Manning & Chace (1990); as <i>Neoalpheopsis euryone</i>	Amphi-Atlantic, tropical
	<i>Salmoneus setosus</i> Manning & Chace, 1990	Manning & Chace (1990)	Western and central Atlantic, tropical
	<i>Salmoneus teres</i> Manning & Chace, 1990	Manning & Chace (1990)	Western and central Atlantic, tropical
	<i>Synalpheus fritzmuelleri</i> Coutière, 1909	Manning & Chace (1990)	Western and central Atlantic, tropical
Gnathophyllidae	<i>Gnathophyllum americanum</i> Guérin-Méneville, 1855	Present contribution	Pantropical
	<i>Gnathophyllum ascensione</i> Manning & Chace, 1990	Manning & Chace (1990)	Endemic
Hippolytidae	<i>Lysmata grabhami</i> (Gordon, 1835)	Manning & Chace (1990)	Amphi-Atlantic, tropical-subtropical
	<i>Lysmata moorei</i> (Rathbun, 1901)	Chace (1972)	Amphi-Atlantic, tropical
	<i>Lysmata seticaudata</i> (Risso, 1816)	Manning & Chace (1990), as <i>Lysmata intermedia</i>	Central and eastern Atlantic
	<i>Thor manningi</i> Chace, 1972	Manning & Chace (1990)	Western and central Atlantic
Palaemonidae	<i>Brachycarpus biunguiculatus</i> (Lucas, 1846)	Manning & Chace (1990)	Pantropical-subtropical
	<i>Pontonia pinnophylax</i> (Otto, 1821)	Manning & Chace (1990)	Central and eastern Atlantic
	<i>Typton ascensionis</i> Manning & Chace, 1990	Manning & Chace (1990)	Endemic
	<i>Typton holthuisi</i> De Grave, 2010	De Grave (2010)	Endemic
Processidae	<i>Processa packeri</i> Manning & Chace, 1990	Manning & Chace (1990)	Endemic
Rhynchocinetidae	<i>Rhynchocinetes rigens</i> Gordon, 1936	Manning & Chace (1990)	Tropical-subtropical Atlantic
<i>Astacidea</i>			
Enoplometopidae	<i>Enoplometopus antillensis</i> Lütken, 1865	Manning & Chace (1990)	Amphi-Atlantic, tropical-subtropical
<i>Axiidea</i>			
Axiidae	<i>Axiopsis serratifrons</i> (A Milne-Edwards, 1873)	Manning & Chace (1990)	Pantropical
Callianassidae	<i>Corallianassa hartmeyer</i> (Schmitt, 1935)	Manning & Chace (1990)	Western and central Atlantic
	<i>Corallianassa longiventris</i> (A. Milne-Edwards, 1870)	Present contribution	Western and central Atlantic
<i>Achelata</i>			
Palinuridae	<i>Panulirus echinatus</i> Smith, 1869	Lenz & Strunck (1914)	Amphi-Atlantic, tropical
Scyllaridae	<i>Scyllarides delfosi</i> Holthuis, 1960	Manning & Chace (1990)	Western and central Atlantic
<i>Anomura</i>			

Continued

Table 2. Continued

	Species	First record	Distribution
Diogenidae	<i>Calcinus tubularis</i> (Linnaeus, 1767)	Manning & Chace (1990)	Central and eastern Atlantic
	<i>Clibanarius rosewateri</i> Manning & Chace, 1990	Manning & Chace (1990)	Endemic
	<i>Dardanus imperator</i> (Miers, 1881)	Ortmann (1893)	Central Atlantic
Parapaguridae	<i>Sympagurus dimorphus</i> (Studer, 1883)	Stebbing (1914); as <i>Eupagurus modicellus</i>	Central and southern Atlantic, deeper water
Porcellanidae	<i>Petrolisthes marginatus</i> Stimpson, 1859	Miers (1881); as <i>Petrolisthes armatus</i>	Amphi-Atlantic, tropical
Hippidae	<i>Hippa testudinaria</i> (Herbst, 1791)	White (1847); as <i>Remipes scutellatus</i>	Western and central Atlantic
<i>Brachyura</i>			
Acidopsidae	<i>Acidops cessaci</i> (A. Milne-Edwards, 1878)	Manning & Chace (1990)	Central and eastern Atlantic
Aethridae	<i>Osachila stimpsonii</i> Studer, 1883	Studer (1883)	Endemic
Atelecyclidae	<i>Atelecyclus rotundatus</i> (Olivi, 1792)	Manning & Chace (1990)	Central and eastern Atlantic
Calappidae	<i>Calappa galloides</i> Stimpson, 1859	Manning & Chace (1990)	Amphi-Atlantic, tropical
	<i>Mursia mcdowelli</i> Manning & Chace, 1990	Manning & Chace (1990)	Endemic
Cryptochiridae	<i>Opecarcinus hypostegus</i> (Shaw & Hopkins, 1977)	Kropp & Manning (1987)	Western and central Atlantic
	<i>Troglocarcinus corallicola</i> Verrill, 1908	Kropp & Manning (1987)	Amphi-Atlantic
Domeciidae	<i>Domecia acanthophora</i> (Desbonne, 1867)	Manning & Chace (1990)	Amphi-Atlantic
Dromiidae	<i>Dromia erythropus</i> (Edwards, 1771)	Manning & Chace (1990)	Western and central Atlantic
	<i>Dromia marmorea</i> Forest, 1974	Manning & Chace (1990)	Central and eastern Atlantic
	<i>Dromia personata</i> (Linnaeus, 1758)	Chace (1966); as <i>Dromia erythropus</i>	Central and eastern Atlantic
	<i>Moreiradromia antillensis</i> (Stimpson, 1859)	Manning & Chace (1990); as <i>Dromidia antillensis</i>	Western and central Atlantic
Epiplatidae	<i>Acanthonyx sanctaehelena</i> Chace, 1966	Manning & Chace (1990)	Central Atlantic
	<i>Apiomithrax violaceus</i> (A. Milne-Edwards, 1867)	Manning & Chace (1990)	Amphi-Atlantic
Grapsidae	<i>Grapsus adscensionis</i> (Osbeck, 1765)	Linnaeus (1754); as <i>Cancer retusus</i>	Central and eastern Atlantic
	<i>Pachygrapsus corrugatus</i> (von Martens, 1872)	Manning & Chace (1990)	Western and central Atlantic
	<i>Pachygrapsus loveridgei</i> Chace, 1966	Miers (1881); as <i>Pachygrapsus transversus</i>	Central Atlantic
Latreillidae	<i>Latreillia elegans</i> Roux, 1830	Stebbing (1914)	Amphi-Atlantic
Panopeidae	<i>Panopeus hartii</i> Smith, 1869	Manning & Chace (1990)	Western and central Atlantic
Parthenopidae	<i>Spinolambrus verrucosus</i> (Studer, 1883)	Studer (1883); as <i>Lambrus verrucosus</i>	Endemic
Percnidae	<i>Percnon abbreviatum</i> (Dana, 1851)	Manning & Chace (1990)	Pantropical
	<i>Percnon gibbesi</i> (H. Milne Edwards, 1853)	Miers (1881)	Amphi-Atlantic, East Pacific
	<i>Plagusia depressa</i> (Fabricius, 1775)	Manning & Chace (1990)	Amphi-Atlantic
Portunidae	<i>Laleonectes vocans</i> (A. Milne-Edwards, 1878)	Rathbun (1930)	Amphi-Atlantic, tropical
	<i>Portunus anceps</i> (de Saussure, 1857)	Manning & Chace (1990)	Western and central Atlantic
Pseudoziidae	<i>Euryozius sanguineus</i> (Linnaeus, 1771)	Linnaeus (1771)	Central Atlantic
Raninidae	<i>Ranilia constricta</i> (A. Milne Edwards, 1880)	Studer (1883); as <i>Notopus atlanticus</i>	Amphi-Atlantic, tropical
Xanthidae	<i>Cataleptodius olsoni</i> Manning & Chace, 1990	Manning & Chace (1990)	Endemic
	<i>Microcassiope minor</i> (Dana, 1852)	Manning & Chace (1990)	Amphi-Atlantic
	<i>Nanocassiope melanodactylus</i> (A. Milne-Edwards, 1868)	Miers (1881)	Central and eastern Atlantic; eastern Pacific
	<i>Paractaea rufopunctata africana</i> Guinot, 1969	Benedict (1893); as <i>Actaea rufopunctata</i>	Central and eastern Atlantic, tropical
	<i>Platypodiella picta</i> (A. Milne-Edwards, 1869)	Manning & Chace (1990)	Central and eastern Atlantic, tropical
	<i>Williamstimpsonia denticulatus</i> (White, 1848)	Manning & Chace (1990); as <i>Xanthodius denticulatus</i>	Amphi-Atlantic



**Fig. 2.** *Odontozona anaphorae* Manning & Chace, 1990: (A) female; (B) male. *Dardanus imperator* (Miers, 1881) (C). *Euryozius sanguineus* (Linnaeus, 1767) (D). All photos by P. Wirtz.

Pier, on settlement panel, 12.4 m, 4 September 2012, OUMNH.2014.03.014.

#### REMARKS

This recently described species (Anker & De Grave, 2012) was previously only known from the type series collected in English Bay. The additional records herein indicate the species to be more widespread around the island.

*Alpheus crockeri* (Armstrong, 1941)

Manning & Chace, 1990, p. 14.

#### MATERIAL EXAMINED

fcn C45/001, 1♂, pocl 5.8, 1 ov.♀, pocl 5.2, Wigan Pier, 12.4 m, 5 September 2012, OUMNH.ZC.2014.03.013; fcn C36/011, 1♂, pocl 6.8, 2♀, pocl 4.5, 5.0, Wigan Pier, 13.4 m, 2 September 2012, OUMNH.ZC.2014.03.016.

#### REMARKS

The present specimens conform to the description of the eastern Atlantic material reported under this name by Crosnier & Forest (1966) and differ from the western Atlantic *A. hortensis* Wicksten & McClure, 2003, in possessing a conspicuous dorso-distal tooth on the palm of the minor cheliped overhanging the base of the fingers, which is lacking in *A. hortensis*. Wicksten & McClure (2003) did, however, express considerable doubt as to whether the eastern Atlantic populations reported under this name are identical to this widespread Indo-West Pacific species.

*Alpheus dentipes* Guérin, 1832

Manning & Chace, 1990, p. 15.

#### MATERIAL EXAMINED

1 juv., Comfortless Cove, from *Sabellaria* reef, 1 m, 10 April 2008, OUMNH.ZC.2008.11.036; 4 ind., incl. ov.♀, cl 2.3–5.4, same location, in coralline algal concretions, 2 m, 13 April 2008, OUMNH.ZC.2008.11.015/029/037/046; 1 juv., same location, inside maerl balls, 2 m, 12 April 2008, OUMNH.ZC.2008.11.056; 3♀, cl 2.2–4.2, same location, underneath sponge, 5 m, 14 April 2008, OUMNH.2008.11.044; 10 ind., incl. ov.♀, cl. 2.5–6.5, same location, from maerl ball, 5 m, 14 April 2008, OUMNH.ZC.2008.11.020; 12 ind., incl. ov.♀, cl 2.0–4.5, McArthur Point, from algal clumps, intertidal, 12 April 2008, OUMNH.ZC.2008.11.019/039/045/047; fcn ASC-122, 1♀, cl 4.8, east of McArthur Point, from coralline algae, intertidal pools, 17 April 2008, OUMNH.ZC.2008.11.038; fcn ASC-090, 2 juv., Collyer Point, by blowhole, intertidal, 15 April 2008, OUMNH.ZC.2008.11.058; 1 juv., English Bay, north point, in intertidal rock pools, 14 April 2008, OUMNH.ZC.2008.11.021; fcn C10/005, 1 ov.♀, cl 5.0, Red Rock, 23 August 2012, OUMNH.ZC.2014.03.017.

*Alpheus holthuisi* Ribeiro, 1964

Manning & Chace, 1990, p. 15.

#### MATERIAL EXAMINED

fcn ASC-152, 1 ov.♀, cl 5.0, western side of English Bay, under rocks, 15 m, 17 April 2008, OUMNH.ZC.2008.11.012; 1♂, cl 3.0, Collyer Point, by blowhole, intertidal, 15 April 2008, OUMNH.ZC.2008.11.060.

*Alpheus paracrinitus* Miers, 1881

Ortmann, 1893, p. 45 (as *Alpheus ascensionis*)  
Manning & Chace, 1990, p. 16.

## MATERIAL EXAMINED

fcn ASC-032-043, 12 ind., cl 3.2–4.5, Comfortless Cove, in coralline algal concretions, 2 m, 13 April 2008, OUMNH.ZC.2008.11.003/004/013/023/032/051; 1 juv., same location, from *Sabellaria* reef, 1 m, 10 April 2008, OUMNH.ZC.2008.11.033; 1♂, cl 3.2, same location, inside maerl balls, 2 m, 12 April 2008, OUMNH.ZC.2008.11.027; 1 ov.♀, cl 6.3, western side of English Bay, under rocks, 10 m, 17 April 2008, OUMNH.ZC.2008.11.050; fcn ASC-151, 1♀, cl 5.7, same location, under rocks, 15 m, OUMNH.ZC.2008.11.049; 1♂, cl 4.0, English Bay, North Point, in intertidal rock pools, 14 April 2008, OUMNH.ZC.2008.11.022.

## REMARKS

This species was first recorded from Ascension Island by Ortmann (1893) as *Alpheus ascensionis* Ortmann, 1893. Holthuis (1951) placed *A. ascensionis* into the synonymy of *A. paracrinatus*, therein followed by Crosnier & Forest (1966). Although a species complex is involved, it seems likely that the Ascension population belongs to *A. paracrinatus* sensu stricto in view of the proximity to the type locality (Senegal).

*Automate dolichognatha* De Man, 1888

Manning & Chace, 1990, p. 16.

## MATERIAL EXAMINED

fcn ASC-158, 1 ov.♀, cl 4.2, western side of English Bay, under rocks, 10 m, 17 April 2008, OUMNH.ZC.2008.11.002/011; fcn ASC-136, 137, 1 ov.♀, cl 4.1, 2♀, cl 3.7, 4.7, same location, 16 April 2008, OUMNH.ZC.2008.11.001/010/030.

## REMARKS

Although the material is herein assigned to *A. dolichognatha*, it is however acknowledged that the true status of the central and also western Atlantic populations must await a full revision of what is undoubtedly a pantropical species complex.

*Metalpheus paragracilis* (Coutière, 1897)

Manning & Chace, 1990, p. 16.

## MATERIAL EXAMINED

1♂, cl 2.7, Comfortless Cove, underneath sponge, 5 m, 14 April 2008, OUMNH.ZC.2008.11.043; fcn ASC-029, 1♂, cl 2.7, 1 ov.♀, cl 4.5, McArthur Point, from intertidal algal clumps, 12 April 2008, OUMNH.ZC.2008.11.40/42; fcn ASC-139, 1 ov.♀, cl 4.0, English Bay, North Point, from intertidal rockpool, 16 April 2008, OUMNH.ZC.2008.11.041; fcn ASC-148, 1 ov.♀, cl 4.5, western side of English Bay, under rocks, 15 m, 17 April 2008, OUMNH.ZC.2008.11.026; fcn C19/004, 1♀, cl 4.7, 1 juv., The Arches, 22 m, 25 August 2012, OUMNH.ZC.2014.03.015.

*Metalpheus rostratipes* (Pocock, 1890)

Manning & Chace, 1990, p. 16.

## MATERIAL EXAMINED

1 ov.♀, cl 4.8, McArthur Point, from intertidal algal clumps, 12 April 2008, OUMNH.ZC.2008.11.048; fcn ASC-120, 128, 5 ind., incl. ov.♀, cl 2.0–3.2, east of McArthur Point, from coralline algae wash, intertidal pool, 17 April 2008, OUMNH.ZC.2008.11.005/006; fcn ASC-006, 1 ov.♀, cl 4.0, Comfortless Cove, from *Sabellaria* clump, 1 m, 10 April 2008, OUMNH.

ZC.2008.11.034; 2 juv., Turtle Beach Point, from intertidal algal clumps, 11 April 2008, OUMNH.ZC.2008.11.052/053.

*Parabetaeus hummelincki* (Schmitt, 1936)

Manning & Chace, 1990, p. 17 (as *Neopalpheopsis euryone*)

## MATERIAL EXAMINED

1♀, cl 5.5, western side of English Bay, under rocks, 15 m, 17 April 2008, OUMNH.ZC.2008.11.031.

## REMARKS

This species was first recorded from Ascension Island by Manning & Chace (1990) as *Neopalpheopsis euryone*, following Banner & Banner (1985) who considered there to be only a single, pantropical species. Following the synonymization of *Neopalpheopsis* Banner, 1953 with *Parabetaeus* Coutière, 1896 in Nomura & Anker (2001), the Atlantic species was tentatively resurrected (as *P. hummelincki*) by Anker (2007).

*Salmoneus setosus* Manning & Chace, 1990

Manning & Chace, 1990, p. 17

## MATERIAL EXAMINED

fcn ASC-028, 1 ov.♀, cl 3.0, McArthur Point, from algal clumps, intertidal, 12 April 2008, OUMNH.ZC.2008.11.007; fcn ASC-053/056, 1 ov.♀, cl 3.0, 1 juv., Comfortless Cove, in coralline algal concretions, 2 m, 13 April 2008, OUMNH.ZC.2008.11.016/073.

## REMARKS

Although originally described from Ascension Island, the species is now also known from Atol das Rocas and Fernando de Noronha, Brazil (Anker, 2007), as well as the Yucatan Peninsula, Mexico (Anker, 2010),

*Synalpheus fritzmuelleri* Coutière, 1909

Manning & Chace, 1990, p. 22

## MATERIAL EXAMINED

1 ov.♀, cl 3.5, Comfortless Cove, in coralline algal concretions, 2 m, 13 April 2008, OUMNH.ZC.2008.11.014; 1 ov.♀, cl 3.4, same location, from *Sabellaria* clumps, 1 m, 10 April 2008, OUMNH.ZC.2008.11.035.

Family GNATHOPHYLLIDAE Dana, 1852

*Gnathophyllum americanum* Guérin-Méneville, 1855

## MATERIAL EXAMINED

1 juv., pocl 1.2, English Bay, 12 m, under stone, leg. P. Wirtz & P. Nahke, 6 February 2014, OUMNH.ZC.2014.01.020.

## REMARKS

A further individual of this distinctly coloured species was also observed by PW when turning over a stone in 13 m depth in English Bay on 10 September 2012. The animal escaped before it could be photographed or collected. These constitute the first record of this pantropical species for Ascension Island and the central Atlantic.

*Gnathophyllum ascensione* Manning & Chace, 1990

Manning & Chace, 1990, p. 11.

## MATERIAL EXAMINED

fcn ASC-119, 1♀, pocl 1.5, east of MacArthur Point, intertidal pool, under *Diadema ascensionis*, 17 April 2008, OUMNH.ZC.2008.11.075.

## REMARKS

The specimen had a uniform black colour. The type series was found associated with *Echinometra lucunter polypora*, the present specimen constituting a new host record.

Family HIPPOLYTIDAE Spence Bate, 1888  
*Lysmata grabhami* (Gordon, 1935)

Manning & Chace, 1990, p. 23.

## MATERIAL EXAMINED

2 ind., pocl 8.0, 9.4, Porpoise Point, under rocks, 14 m, 19 June 2010, leg. RAF diving team, OUMNH.ZC.2010.04.028/029; fcn C32/004, 2 ind., pocl 10.0–11.0, Stack in South-East Bay, 25 m, 1 September 2012, OUMNH.ZC.2014.03.018.

*Lysmata moorei* (Rathbun, 1901)

Chace, 1972, p. 128; Manning & Chace, 1990, p. 23

## MATERIAL EXAMINED

fcn ASC-96-111, 25 ind., pocl 2.1–3.5, Shelly Beach, in intertidal pools, 16 April 2008, OUMNH.ZC.2008.11.063/064/065/066/096/097/098/099/100; 1 ind., pocl 3.9, Red Rock, 15 m, from crack in rock, leg. P. Wirtz & P. Nahke, 9 February 2014, OUMNH.ZC.2014.01.021.

*Thor manningi* Chace, 1972

Manning & Chace, 1990, p. 24

## MATERIAL EXAMINED

fcn Q27/003, 1 ov.♀, pocl 1.5, Comfortless Cove, 10 m, 28 August 2012, OUMNH.ZC.2014.03.010; 1 ov.♀, pocl 1.7, 1 ind., English Bay, 10 m, in crack in rock, leg. P. Wirtz & P. Nahke, 9 February 2014, OUMNH.ZC.2014.01.018.

## REMARKS

One of the individuals is noteworthy by possessing an acute branchiostegal tooth on the right-hand side of the carapace, with all other morphological features, as well as the colour pattern (photo by PW), fitting the diagnosis of *T. manningi*.

Family PALAEMONIDAE Rafinesque, 1815  
*Brachycarpus biunguiculatus* (Lucas, 1846)

Manning & Chace, 1990, p. 9.

## MATERIAL EXAMINED

fcn ASC-116, 1♂, pocl 4.5, western side of English Bay, under rocks, 5–10 m, 16 April 2008, OUMNH.ZC.2008.11.076; fcn ASC-147, 1♂, pocl 6.2, same location, under rocks, 15 m, 17 April 2008, OUMNH.ZC.2008.11.085; fcn C32/006, 1♀, pocl 4.7, Stack in South-East Bay, 25 m, 1 September 2012, OUMNH.ZC.2014.03.05; fcn C36/009, 1♂, pocl 3.5, 1♀, pocl 4.4, Wigan Pier, 13.4 m, 2 September 2012, OUMNH.ZC.2014.03.09; fcn C45/012, 1 ind., Wigan Pier, 12.4 m, 5 September 2012, OUMNH.ZC.2014.03.07; 1♂, bopyrised, pocl 4.5, Red Rock, 15 m, from crack in rock,

leg. P. Wirtz & P. Nahke, 9 February 2014, OUMNH.ZC.2014.01.019.

*Pontonia pinnophylax* (Otto, 1821)

Manning & Chace, 1990, p. 10.

## MATERIAL EXAMINED

fcn ASC-011-012, 2♂, pocl 6.8, 7.8, 1 ov.♀, pocl 8.5, W side of English Bay, from *Pinna rudis*, 10 m, 10 April 2008, OUMNH.ZC.2008.11.078/081; fcn ASC-142-143, 1♂, pocl 9.0, 1♀, pocl 11.2, same location, from *Pinna rudis*, 15 m, OUMNH.ZC.2008.11.079/080; fcn C2/003, 1♀, pocl 10.5, Wigan Pier, 12 m, 19 August 2012, OUMNH.ZC.2014.03.04; fcn C2/008, 1♂, pocl 9.1, Wigan Pier, 12 m, 19 August 2012, OUMNH.ZC.2014.03.06.

Family PROCESSIDAE Ortmann, 1896  
*Processa packeri* Manning & Chace, 1990

Manning & Chace, 1990, p. 24.

## MATERIAL EXAMINED

fcn ASC-037-038, 13 ind., incl ov.♀, pocl 1.9–3.2, Comfortless Cove, inside maerl balls, 2 m, 12 April 2008, OUMNH.ZC.2008.11.057/069/089; 1♂, pocl 1.6, 1 ov.♀, pocl 1.1, same location, inside maerl balls, 5 m, 14 April 2008, OUMNH.ZC.2008.11.070/088; 3 ind., pocl 1.0–1.1, same location, in coralline algal concretions, 2 m, 13 April 2008, OUMNH.ZC.2008.11.090.

## REMARKS

This species is the smallest processid shrimp worldwide, with females being ovigerous at 1.0–1.1 mm pocl.

Family RHYNCHOCINETIDAE Ortmann, 1890  
*Cinetorhynchus rigens* (Gordon, 1936)

Manning & Chace, 1990, p. 9 (as *Rhynchocinetes rigens*)

## MATERIAL EXAMINED

fcn C41/002, 1♀, pocl 5.4, western side of English Bay, in lava tube, 13 m, 4 September 2012, OUMNH.ZC.2014.03.08.

Infraorder AXIIDEA de Saint Laurent, 1979

Family AXIIDAE Huxley, 1879  
*Axiopsis serratifrons* (A. Milne-Edwards, 1873)

Manning & Chace, 1990, p. 31; figures 16–17.

## MATERIAL EXAMINED

1 juv., western side of English Bay, under rocks, 15 m, 17 April 2008, OUMNH.ZC.2008.11.093.

Family CALLIANASSIDAE Dana, 1852  
*Corallianassa longiventris* (A. Milne-Edwards, 1870)

## MATERIAL EXAMINED

fcn C45/024, 1♀, tl 71 cl 16.4, Wigan Pier, 12.4 m, 5 September 2012, NHMW 25601; fcn C50/004, 1 ind. (incomplete, cephalothorax posterior to P<sub>3</sub>, pleon missing), same location, 12 m, 7 September 2012, NHMW 25602.

## REMARKS

Differences between *C. longiventris* and *C. hartmeyeri* have been outlined by Schmitt (1935) and Manning (1988). The present specimens show all characters typical for

*C. longiventris*. While Sakai (1999, 2005) considered both species valid (as *Glypturus*), Sakai (2011) synonymized *hartmeyeri* with *longiventris* without presenting any arguments for his action. Recent examination of many specimens from Florida, the Gulf of Mexico and Yucatan, however, have shown that both species differ from each other by several characters (D.L. Felder, personal communication, April 2014). The species is herein newly recorded for Ascension Island.

Infraorder ASTACIDEA Latreille, 1802  
Family ENOPLOMETOPIDAE de Saint Laurent, 1988  
*Enoplometopus antillensis* Lütken, 1865

Manning & Chace, 1990, p. 31.

#### MATERIAL EXAMINED

1♀, cl 20.5, Porpoise Point, under rocks, 14 m, 09/2010, leg. RAF diving team, OUMNH.ZC.2010.04.030.

#### REMARKS

A moult of this species was also found at English Bay on 9 September 2012, but not deposited.

Infraorder ANOMURA MacLeay, 1838  
Family DIOGENIDAE Ortmann, 1892  
*Dardanus imperator* (Miers, 1881)  
(Figure 2C)

Ortmann, 1893, p. 52.

#### MATERIAL EXAMINED

fcn C29/003, 1 ind., sl 4.8, Catherine Point, 10 m, 30 August 2012, OUMNH.ZC.2014.03.019; fcn Q27/004, 2. ind., Comfortless Cove, 10 m, 28 August 2012, OUMNH.ZC.2014.03.020; fcn C10/002, 1 ind., sl 8.0, Red Rock, 23 August 2012, OUMNH.ZC.2014.03.021.

Family HIPPIDAE Latreille, 1825

*Hippa testudinaria* (Herbst, 1791)

Manning & Chace, 1990, p. 41, Fig. 23a.

#### MATERIAL EXAMINED

fcn ASC 017, 4♂, cl 10.4–13.3, 1♀ 13.4, 1 ov.♀ 15.7, hand collecting, surf zone, Turtle Beach, 11 April 2008, OUMNH.ZC.2008.11.0094; fcn IT7/001, 4 ov.♀, cl 13.5–14.1, English Bay beach, 22 August 2012, NHMUK 2014.838-840.

Infraorder BRACHYURA Linnaeus, 1758  
Family ACIDOPSIDAE Štević, 2005  
*Acidops cessaci* (A. Milne Edwards, 1878)

Manning & Chace, 1990, p. 52.

#### MATERIAL EXAMINED

fcn ASC-155, 1♀, cw 17.3, 15 m, west side of English Bay, 17 April 2008, NHMUK 2014.561; fcn C11/008, 1♀, cw 16.2, 9 m, Darby Wreck arch, 23 August 2012, NHMUK 2014.841; fcn C18/004, 1♂, cw 12.9, 8.7 m, Darby Beach, 25 August 2012, not registered; fcn C50/005, 1 ov.♀, cw 16.4, 12 m, Wigan Pier, 7 September 2012, NHMUK 2014.842.

Family CALAPPIDAE De Haan, 1833  
*Calappa galloides* Stimpson, 1859

Manning & Chace, 1990, p. 45, Fig. 24a.

#### MATERIAL EXAMINED

fcn C50/007, 1♂, cw 17.6, 12 m, Wigan Pier, 7 September 2012, not registered.

Family CRYPTOCHIRIDAE Paulson, 1875  
*Troglocarcinus corallicola* Verrill, 1908

Manning & Chace, 1990, p. 69.

#### MATERIAL EXAMINED

fcn ASC-045, 1♂, cw 1.8, 2 ov.♀, cw 3.5, 2 m, Comfortless Cove, 13 April 2008, NHMUK 2014.562-564.

Family EPIALTIDAE MacLeay, 1838  
*Acanthonyx sanctaehelenae* (Chace, 1966)

Manning & Chace, 1990, p. 47.

#### MATERIAL EXAMINED

fcn ASC-008, 1♂, cw 2.3, from *Sabellaria* Reef, 1 m, Comfortless Cove, 10 April 2008, NHMUK 2014.759; fcn ASC-033, 1 juv., cw 2.0, hand collecting, intertidal, from algal clumps, McArthur Point, 12 April 2008, NHMUK 2014.562-564; fcn ASC-066, 1♀, cw 2.0, intertidal, in rock pools, English Bay, North Point, 14 April 2008, NHMUK 2014.770; fcn ASC-123, 1♂, cw 2.9, from coralline algae, intertidal pools, east of McArthur Point/Turtle Beach, 17 April 2008, NHMUK 2014.771.

*Apiomithrax violacens* (A. Milne-Edwards, 1868)

Manning & Chace, 1990, p. 47.

#### MATERIAL EXAMINED

fcn C25/007, 1♂, cw 23.2, Comfortless Cove, 29 August 2012, not registered; fcn C46 003, 1♂, cw 8.7, English Bay, 5 September 2012, NHMUK 2014.843; fcn C55 002, 1 juv., 6.5, Two Hooks to English Bay, 9 September 2012, NHMUK 2014.844; fcn ASC-156 in rock pools, intertidal English Bay, North Point, 17 April 2008, OUMNH 2008-11-0077.

Family GRAPSIDAE MacLeay, 1838  
*Grapsus adscensionis* (Osbeck, 1765)

Manning & Chace, 1990, p. 63.

#### MATERIAL EXAMINED

fcn ASC-070, 3 juv., cw 7.2–9.1, on rocks by blowhole, intertidal, Collyer Point, 13 April 2008, NHMUK 2014.562-564; fcn ASC-071, 2 juv., cw 8.9, 11.8, on rocks by blowhole, intertidal, Collyer Point, 13 April 2008, NHMUK 2014.568-569; fcn ASC-076, 1 juv., diving, from maerl ball, 5 m, Comfortless Cove, 14 April 2008, NHMUK 2014.570; fcn ASC-084, 1 juv., cw 13.3, intertidal, Collyer Point, by blowhole, 15 April 2008, NHMUK 2014.571; fcn ASC-087, 1 juv., cw 9.5, intertidal, Collyer Point, by blowhole, 15 April 2008, NHMUK 2014.572; fcn ASC-089, 2 juv., cw 18.8, 20.8, intertidal, Collyer Point, by blowhole, 15 April 2008, NHMUK 2014.573-574; fcn ASC-118, 1 juv., cw 11.2, intertidal pools, east of McArthur Point/Turtle Beach, 17 April 2008, NHMUK 2014.575; 1 ov.♀, cw 55, 1♀, cw 58, 5♂, cw 44–64, in outlet of desalination plant, English Bay, intertidal, 10 April 2008, OUMNH.ZC.2008-11-061.

*Pachygrapsus loveridgei* Chace, 1966

Manning & Chace, 1990, p. 66.



## MATERIAL EXAMINED

fcn ASC-003, 1♂, cw 4.2, 1 ov.♀, cw 4.7, from *Sabellaria* Reef, 1 m, Comfortless Cove, 10 April 2008, NHMUK 2014.576-577; fcn ASC-007, 1♂, cw 4.3, 1 ov.♀, cw 4.8, from *Sabellaria* reef, 1 m, Comfortless Cove, 10 April 2008, NHMUK 2014.578-579; fcn ASC-018, 1♂, cw 9.6, hand collecting, intertidal, from *Sabellaria* reef, Turtle Beach Point, 11 April 2008, NHMUK 2014.580; fcn ASC-019, 1♂, cw 5.8, 1 ov.♀, cw 8.9, hand collecting, intertidal, between oysters, Turtle Beach Point, 11 April 2008, NHMUK 2014.581-582; fcn ASC-036, 1♀, cw 6.0, hand collecting, intertidal, from algal clumps, McArthur Point, 12 April 2008, NHMUK 2014.583-584; fcn ASC-040, 1♀, cw 4.7, inside maerl balls, 2 m, Comfortless Cove, 13 April 2008, NHMUK 2014.585; fcn ASC-081, 9♂, cw 4.3-5.7, 3♀, cw 4.0-4.5, intertidal, by blowhole, Collyer Point, 15 April 2008, NHMUK 2014.586-595; fcn ASC-082, 10♂, cw 3.6-7.3, 3♀, cw 6.0-4.1, intertidal, by blowhole, Collyer Point, 15 April 2008, NHMUK 2014.596-605; fcn ASC-093, 3 juvs, intertidal pools, Shelly Beach, 16 April 2008, NHMUK 2014.606-608.

Family PANOPEIDAE Ortmann, 1893  
*Panopeus hartii* Smith, 1869

Manning & Chace, 1990, p. 57, figures 37, 38.

## MATERIAL EXAMINED

fcn ASC-016, 1♀, cw 6.9, intertidal, rocky beach west of North East Bay, 11 April 2008, NHMUK 2014.772; fcn ASC-039, 2♂, cw 2.8, 3.0, 1 ov.♀, cw 4.0, inside maerl balls, 2 m, Comfortless Cove, 13 April 2008, NHMUK 2014.773-775; fcn ASC-040, 1♀, cw 2.9, inside maerl balls, 2 m, Comfortless Cove, 13 April 2008, NHMUK 2014.776; fcn ASC-069, 2♂, cw 6.0, 8.0, 2♀, cw 6.1, 8.1, intertidal, in rock pools, English Bay, North Point, 14 April 2008, NHMUK 2014.777-780; fcn ASC-083, 1♂, cw 4.2, intertidal, by blowhole, Collyer Point, 15 April 2008, NHMUK 2014.781; fcn ASC-095, 1♀, cw 10.8, intertidal pools, Shelly Beach, 16 April 2008, NHMUK 2014.781; fcn ASC-154, 2♂, cw 8.9, 10.1, in rock pools, intertidal, English Bay, North Point, 17 April 2008, NHMUK 2014.783-784; fcn C6/016, 1♂, cw 5.0, 9 m, Darby wreck, 21 August 2012, NHMUK 2014.845; fcn C19/005, 1♂, cw 6.5, 9.8 m, George Town Harbour, 27 August 2012, not registered; fcn C31/004, 1♂, cw 4.3, 1♀, cw 5.1, 12.8, Northeast Bay, 31 August 2012, NHMUK 2014.845; fcn C45/021, 1 ov.♀, cw 5.0, 12.4 m, Wigan Pier, 5 September 2012, NHMUK 2014.848.

Family PERCNIDAE Števcíć, 2005  
*Percnon abbreviatum* (Dana, 1851)

Manning & Chace, 1990, p. 68, Fig. 44.

## MATERIAL EXAMINED

fcn ASC-024, 1 juv., intertidal, from rocks, Turtle Beach Point, 11 April 2008, NHMUK 2014.783-784.

*Percnon gibbesii* (H. Milne Edwards, 1853)

Manning & Chace, 1990, p. 68, Fig. 45.

## MATERIAL EXAMINED

fcn ASC-144, 1♂, cw 15.6, diving, under *Diadema*, 15 m, west side of English Bay, 16 April 2008, NHMUK 2014.786; fcn

C9/002, 1♂, cw 19.8, 4.6 m, Darby Beach, 22 August 2012, NHMUK 2014.849; fcn C18/006, 1♂, cw 15.1, 8.7 m, Darby Beach, 25 August 2012, not registered.

Family PORTUNIDAE Rafinesque, 1815  
*Laleonectes vocans* (A. Milne-Edwards, 1878)

Manning & Chace, 1990, p. 50, figures 32, 33.

## MATERIAL EXAMINED

fcn C36/005, 1♀, cw 20.9, 13.4 m, Wigan Pier, 2 September 2012, not registered; fcn C47/002, 1 ov.♀, cw 28.0, 8 m, Darby Wreck, 9 June 2012, NHMUK 2014.850.

*Portunus (Portunus) anceps* (Saussure, 1858)

Manning & Chace, 1990, p. 52, Fig. 34.

## MATERIAL EXAMINED

fcn ASC-161, 1♂, cw 10.9, diving, 10 m, west side of English Bay, 17 April 2008, NHMUK 2014.787; fcn Q49/001, 1♀, cw 24.9, 8 m, Wigan Pier, 4 September 2012, NHMUK 2014.851.

Family PSEUDOZIIDAE Alcock, 1898  
*Euryozius sanguineus* (Linnaeus, 1767)  
(Figure 2D)

Manning & Chace, 1990, p. 55, figure 36.

## MATERIAL EXAMINED

fcn ASC-132, 1♂, cw 10.9, by hand, west side of English Bay, 10 m, 16 April 2008, NHMUK 2014.787; fcn 130405 Q5/B/01, 1♀ moult, cw 40.0, 16 m, Pyramid, 21 August 2012, NHMUK 2014.852; fcn Q17/001, 1♂, cw 18.9, 8.3 m, Long Beach, 24 August 2012, ZRC 2014.0342; fcn C38/003, 1♂, cw 12.3, 13.8 m, Pam Am Bay, 3 September 2012, NHMUK 2014.854; fcn C40/003, 1♂ moult, cw 23.9, 9.3 m, Comfortless Cove, 4 September 2012, NHMUK 2014.855; fcn C47/001, 1 ov.♀, cw 35.5, 8 m, Darby Wreck, 6 September 2012, NHMUK 2014.856.

Family XANTHIDAE MacLeay, 1838  
*Cataleptodius olsoni* Manning & Chace, 1990

Manning & Chace, 1990, p. 54, figure 35.

## MATERIAL EXAMINED

fcn ASC-018, 1♀, cw 4.6, 1 ov.♀, cw 8.0, hand collecting, intertidal, from *Sabellaria*, Turtle Beach Point, 11 April 2008, NHMUK 2014.789-790; fcn ASC-019, 5♂, cw 3.6-6.9, 3♀, cw 4.9-7.3, hand collecting, intertidal, between oysters, Turtle Beach Point, 11 April 2008, NHMUK 2014.791-798; fcn ASC-021, 4♂, 3.6-5.3, 3♀, cw 3.8-4.3, hand collecting, intertidal, from algal clumps, Turtle Beach Point, 11 April 2008, NHMUK 2014.799-805; fcn ASC-024, 1♀ ov., cw 5.9, hand collecting, intertidal, from rocks, Turtle Beach Point, 11 April 2008, NHMUK 2014.806; fcn ASC-031, 1♀, cw 3.8, hand collecting, intertidal, from algal clumps, McArthur Point, 12 April 2008, NHMUK 2014.807; fcn ASC-035, 1 ov.♀, cw 7.2, hand collecting, intertidal, from algal clumps, McArthur Point, 12 April 2008, NHMUK 2014.808; fcn ASC-126, 1♂, cw 4.4, 1♀, cw 4.5, 1 ov.♀, 5.4, from coralline algae, intertidal pools, east of

McArthur Point/Turtle Beach, 17 April 2008, NHMUK 2014.809-811; fcn ASC-127, 3♂, cw 3.4–5.3, 1♀, cw 3.8, from coralline algae, intertidal pools, east of McArthur Point/Turtle Beach, 17 April 2008, NHMUK 2014.812-815; fcn A2/001, 1♀, cw 4.8, no further details, not registered.

*Microcassiope minor* (Dana, 1852)

Manning & Chace, 1990, p. 56.

#### MATERIAL EXAMINED

fcn C8/003, 1♂, cw 5.6, Darby Beach, 22 August 2012, NHMUK 2014.857; fcn C10/004, 1♂, cw 5.3, 1♀, cw 5.8, Red Rock, 23 August 2012, NHMUK 2014.858-859; fcn C35/003, 1♂, cw 4.6, 8.5 m, Northeast Bay, 31 August 2012, NHMUK 2014.860; fcn Q7/002, 1♀, cw 5.3, 16.8 m, Two Hooks, 22 August 2012, NHMUK 2014.861; 1♂, cw 5, 1 ov.♀, cw 7.9, 2012 no further details, not registered.

*Nanocassiope melanodactylus* (A. Milne Edwards, 1868)

Manning & Chace, 1990, p. 57 (as *Nannocassiope melanodactylus*, erroneous spelling).

#### MATERIAL EXAMINED

fcn C45/018, 1♂, cw 9.6, 12.4 m, Wigan Pier, 5 September 2012, not registered.

*Paractaea rufopunctata africana* Guinot, 1976

Manning & Chace, 1990, p. 57, Fig. 39.

#### MATERIAL EXAMINED

fcn C09/001, 1♀, cw 13.1, 4.6 m, Darby Beach, 22 August 2012, NHMUK 2014.862; fcn C18 005, 1♂, cw 16.1, 8.7 m, Darby Beach, 25 August 2012, NHMUK 2014.863.

*Platypodiella picta* (A. Milne Edwards, 1899)

Manning & Chace, 1990, p. 59.

#### MATERIAL EXAMINED

fcn IT18/002, 1 ov.♀, cw 16.3, west of English Bay, intertidal, 2 September 2012, NHMUK 2014.864; fcn C33/001, 1 ov.♀, cw 8.3, Boatswain Bird Island, 16 m, 1 September 2012, not registered.

*Williamstimpsonia denticulatus* (White, 1848)

Manning & Chace, 1990, p. 60, figure 40 (as *Xanthodius denticulatus*).

#### MATERIAL EXAMINED

fcn ASC-001, 1♀, cw 11.0, from *Sabellaria* Reef, 1 m, Comfortless Cove, 10 April 2008, NHMUK 2014.816; fcn ASC-002, 3♂, cw 5.8–6.4, from *Sabellaria* Reef, 1 m, Comfortless Cove, 10 April 2008, NHMUK 2014.817-819; fcn ASC-032, 2 juvs, intertidal, from algal clumps, McArthur Point, 12 April 2008, NHMUK 2014.820-821; fcn ASC-039, 3 juvs, inside maerl balls, 2 m, Comfortless Cove, 13 April 2008, NHMUK 2014.822-824; fcn ASC-061, 2♀, cw 6.0, 6.9, 3♂, cw 8.0–10.8, in coralline algal concretions, 2 m, Comfortless Cove, 13 April 2008, NHMUK 2014.825-829; fcn ASC-076, 1♀ cw 8.4, 1 juv., from maerl

ball, 5 m, Comfortless Cove, 14 April 2008, NHMUK 2014.830-831; fcn ASC-079, 1♀, cw 14.0, intertidal, by blowhole, Collyer Point, 15 April 2008, NHMUK 2014.830-831; fcn ASC-083, 1♂, cw 7.4, 1 juv. intertidal, by blowhole, Collyer Point, 15 April 2008, NHMUK 2014.833; fcn ASC-138, 1♀, cw 11.7, 10 m, West side of English Bay, 16 April 2008, NHMUK 2014.834; fcn ASC-141, 1♀, cw 14.4, in rock pools, intertidal, English Bay, North Point, 16 April 2008, NHMUK 2014.835; fcn ASC-145, 1♂, cw 5.2, 15 m, west side of English Bay, 17 April 2008, NHMUK 2014.836; fcn ASC-157, 1♀, cw 15.8, in rock pools, intertidal, English Bay, North Point, 17 April 2008, NHMUK 2014.837; fcn C6/016, 2♂, cw 18.2, 18.2, 9 m, Darby Wreck, 21 August 2012, NHMUK 2014.865-866; NHMUK 2014.837; fcn C8/002, 1♀, cw 10.3, Darby Beach, 22 August 2012, NHMUK 2014.867; fcn C10/003, 1♂, cw 13.7, Red Rock, 23 August 2012, NHMUK 2014.868; fcn C10/004, 1♀, cw 17.1, Red Rock, 23 August 2012, NHMUK 2014.869; fcn C20/007, 1♂, cw 15.5, 11 m, Sudan Wreck, 27 August 2012, NHMUK 2014.870; fcn C31/008, 1♂, cw. 15.9, diving, 12.8 m, North East Bay, 31 August 2012, NHMUK 2014.871; fcn C45/022, 1♀, cw 10.0, 12.4 m, Wigan Pier, 5 September 2012, NHMUK 2014.872; fcn C50/006, 1♂, cw 19.3, 12 m, Wigan Pier, 7 September 2012, NHMUK 2014.873.

## DISCUSSION

Manning & Chace (1990) recorded 74 species of Decapoda from Ascension Island, including the terrestrial crab, *Johngarthia lagostoma*, and the anchialine shrimps, *Procaris ascensionis* and *Typhlatya rogersi*. All three of these species were also noted during the 2008 and 2012 surveys, but are herein not further reported upon. Since this study there have been few amendments to the fauna. The western Atlantic shrimp, *Lysmata intermedia* was recorded from Ascension by Manning & Chace (1990), however Manning (in litt.) in d'Udekem d'Acoz (2000) indicates this to be a misidentification, with the specimens probably belonging to the east Atlantic *L. seticaudata* (see Table 2). Manning & Chace (1990) also discuss the presence of *Latreillia manningi* at Ascension, this species was, however, synonymized with *L. elegans* by Castro *et al.* (2003) and is reported herein under that name. Fransen (2006) in a partial key to *Periclimenaeus*, states *Periclimenaeus atlanticus* to be present on the island, however this is considered a lapsus (Fransen, in litt.). In addition to *Corallianassa hartmeyeri* reported by Manning & Chace (1990), *C. longiventris* is herein also recorded for Ascension Island. Only two species of shrimp have been added to the known fauna of the island since Manning & Chace (1990). De Grave (2010) described *Typton holthuisi* from Comfortless Cove, noting that this species was potentially more widely distributed in the tropical eastern Atlantic. Anker & De Grave (2012) described *Alpheus cedrici* from English Bay, a species still only known from Ascension. In the present contribution, a further species is added, the widespread *Gnathophyllum americanum*. Despite intensive collecting in 2008 and 2012, no additional crab species are reported herein.

The presently known marine Decapoda fauna thus stands at 75 species (Table 2), of which 12 species are considered to be endemic to the island. A full discussion of the

biogeography of the marine decapod fauna is beyond the scope of the present contribution, but it is noted that the decapod fauna of St Helena is poorly known, being restricted to Chace (1966) and De Grave (2007), who note 36 species to occur. There is a likelihood that a number of the endemic taxa recorded from Ascension will eventually be reported from St Helena.

## ACKNOWLEDGEMENTS

This publication partly arises from research funded by the John Fell Oxford University Press Research Fund, who funded the 2008 OUMNH expedition to Ascension Island by S. and H. De Grave. The funding for the 2012 expedition came from a grant to Dr Paul Brickle from the Darwin Initiative (EIDCFo12). We are grateful to the Shallow Marine Surveys Group and the South Atlantic Environmental Research Institute for organizing the 2012 expedition. We are also very grateful to Ascension Island Government, the members of staff at the Conservation Centre and Ascension Island Dive Club for their cooperation, accommodation and hospitality during both expeditions. Finally we are grateful to British Forces South Atlantic Islands for their logistical support to the 2012 expedition.

## REFERENCES

- Anker A.** (2007) New species and records of alpheid shrimps, genera *Salmones* Holthuis and *Parabetaeus* Coutière, from the tropical western Atlantic (Decapoda, Caridea). *Zootaxa* 1653, 21–39.
- Anker A.** (2010) The shrimp genus *Salmones* Holthuis, 1955 (Crustacea, Decapoda, Alpheidae) in the tropical western Atlantic, with description of five new species. In De Grave S. and Fransen C.H.J.M. (eds), *Contributions to shrimp taxonomy*. *Zootaxa* 2372, 177–205.
- Anker A. and De Grave S.** (2012) Description of *Alpheus cedrici* sp.n., a strikingly coloured snapping shrimp (Crustacea, Decapoda, Alpheidae) from Ascension Island, central Atlantic Ocean. *Zookeys* 183, 1–15.
- Banner D.M. and Banner A.H.** (1985) The alpheid shrimp of Indonesia, based upon J.G. De Man's "The Decapoda of the Siboga Expedition, Part II. Family Alpheidae." (1911). *Marine Research in Indonesia* 25, 1–79.
- Benedict J.E.** (1893) Notice on the crustaceans collected by the United States Scientific expedition to the west coast of Africa. *Proceedings of the United States National Museum* 16, 535–541.
- Castro P., Williams A.B. and Cooper L.L.** (2003) Revision of the family Latreilliidae Stimpson, 1858 (Crustacea, Decapoda, Brachyura). *Zoosystema* 25, 601–634.
- Chace F.A. Jr** (1966) Decapod crustaceans from St. Helena Island, South Atlantic. *Proceedings of the United States National Museum* 3536, 623–661.
- Chace F.A. Jr** (1972) The shrimps of the Smithsonian-Bredin Caribbean expeditions with a summary of the West Indian shallow-water species (Crustacea: Decapoda: Natantia). *Smithsonian Contributions to Zoology* 98, 1–179.
- Chace F.A. Jr and Manning R.B.** (1972) Two new caridean shrimps, one representing a new family, from marine pools on Ascension Island (Crustacea: Decapoda: Natantia). *Smithsonian Contributions to Zoology* 131, 1–18.
- Crosnier A. and Forest J.** (1966) Crustacés Décapodes: Alpheidae. Campagne de la *Calypso* dans le Golfe de Guinée et aux Iles Principe, São Tome et Annobon (1956), et Campagne aux Iles du Cap Vert (1959) (suite), XXVII: résultats scientifique des campagnes de la "Calypso", Fascicule 7. *Annales de l'Institut Océanographique* 44, 199–314.
- d'Udekem d'Acoz C.** (2000) Redescription of *Lysmata intermedia* (Kingsley, 1879) based on topotypical specimens, with remarks on *Lysmata seticaudata* (Risso, 1816) (Decapoda, Caridea, Hippolytidae). *Crustaceana* 73, 719–735.
- De Grave S.** (2007) On the occurrence of *Gnathophylleptum tellei* d'Udekem d'Acoz, 2001 (Decapoda, Gnathophyllidae) in St Helena, South Atlantic Ocean. *Crustaceana* 80, 893–895.
- De Grave S.** (2010) A new species of the genus *Typton* Costa (Decapoda, Palaemonidae, Pontoniinae) from Ascension Island. In Fransen C.H.J.M., De Grave S. and Ng P.K.L. (eds) *Studies on Malacostraca: Lipke Bijdeley Holthuis Memorial Volume*. *Crustaceana Monographs*, 14. Leiden: Brill, pp. 209–218.
- Fransen C.H.J.M.** (2006) On Pontoniinae (Crustacea, Decapoda, Palaemonidae) collected from ascidians. *Zoosystema* 28, 713–746.
- Holthuis L.B.** (1951) The caridean Crustacea of tropical West Africa. *Atlantide Report. Scientific Results of the Danish Expedition to the Coasts of Tropical West Africa 1945–1946* 2, 7–187.
- Kropp R.K. and Manning R.B.** (1987) The Atlantic gall crabs, family Cryptochiridae (Crustacea: Decapoda: Brachyura). *Smithsonian Contributions to Zoology* 462, 1–21.
- Lenz H. and Strunck K.** (1914) Die Dekapoden der Deutschen Südpolar-Expedition 1901–1903. I. Brachyuren und Macruren mit ausschluß der Sergestiden. *Wissenschaftliche Ergebnisse der Deutschen Südpolar-Expedition* 15(Zoologie 7), 257–346.
- Linnaeus C.** (1754) *Specimen academician s[i]stens Chinensia Lagerstromiana quod ... praeside ... Carolo Linnaeo ... submittit J.L. Odhelio ... d. [23.] Decembr. Holmiae.*
- Linnaeus C.** (1771) *Mantissa plantarum altera, Generum editionis VI. Specierum editionis II*, Volume 2. Holmiae.
- Manning R.B.** (1988) The status of *Callianassa hartmeyeri* Schmitt, 1935 with the description of *Corallianassa xutha* from the west coast of America (Crustacea, Decapoda, Thalassinidea). *Proceedings of the Biological Society of Washington* 101, 883–889.
- Manning R.B. and Chace F.A. Jr** (1990) Decapod and stomatopod Crustacea from Ascension Island, South Atlantic Ocean. *Smithsonian Contributions to Zoology* 503, 1–91.
- Miers E.J.** (1881) On a collection of Crustacea made by Baron Hermann-Maltzam at Goree Island, Senegambia. *The Annals and Magazine of Natural History* 8, 204–220, 259–281, 364–377, Plates 13–16.
- Nomura K. and Anker A.** (2001) A redescription of *Parabetaeus culliereti* Coutière and status of the genus *Neopalpheopsis* Banner (Decapoda: Caridea: Alpheidae). *Crustacean Research* 30, 43–54.
- Ortmann A.** (1893) Decapoden und Schizopoden. *Ergebnisse der Plankton-Expedition der Humboldt-Stiftung* 2, 1–120.
- Rathbun M.J.** (1930) The Cancroid crabs of America. *United States National Museum Bulletin* 152, 1–609.
- Sakai K.** (1999) Synopsis of the family Callianassidae, with keys to sub-families, genera and species, and the description of new taxa (Crustacea: Decapoda: Thalassinidea). *Zoologische Verhandlungen* 326, 1–152.
- Sakai K.** (2005) Callianassoidea of the world (Decapoda, Thalassinidea). *Crustaceana Monographs* 4, 1–200.

- Sakai K.** (2011) Axioidea of the world and a reconsideration of the Callianassoidea (Decapoda, Thalassinidea, Callianassida). *Crustaceana Monographs* 13, 1–616.
- Schmitt W.L.** (1935) Mud shrimps of the Atlantic coast of North America. *Smithsonian Miscellaneous Collections* 93, 1–21.
- Stebbing T.R.R.** (1914) Stalk-eyed Crustacea Malacostraca of the Scottish National Antarctic Expedition. *Transactions of the Royal Society of Edinburgh* 50, 253–307.
- Studer T.** (1883) Verzeichniss der während der Reise S.M.S. Gazelle an der Westküste von Afrika, Ascension und dem Cap der guten Hoffnung gesammelten Crustaceen. *Abhandlungen der K. Preussischen Akademie der Wissenschaften, Berlin* 2, 1–32.
- White A.** (1847) *List of the specimens of Crustacea in the collection of the British Museum*. London: British Museum.
- and
- Wicksten M.K. and McClure M.R.** (2003) A new species of *Alpheus* (Decapoda: Caridea: Alpheidae) from the Gulf of Mexico. *Crustacean Research* 32, 26–31.
- Correspondence should be addressed to:**  
S. De Grave  
Oxford University Museum of Natural History, Oxford, UK  
email: [sammy.degrave@oum.ox.ac.uk](mailto:sammy.degrave@oum.ox.ac.uk)