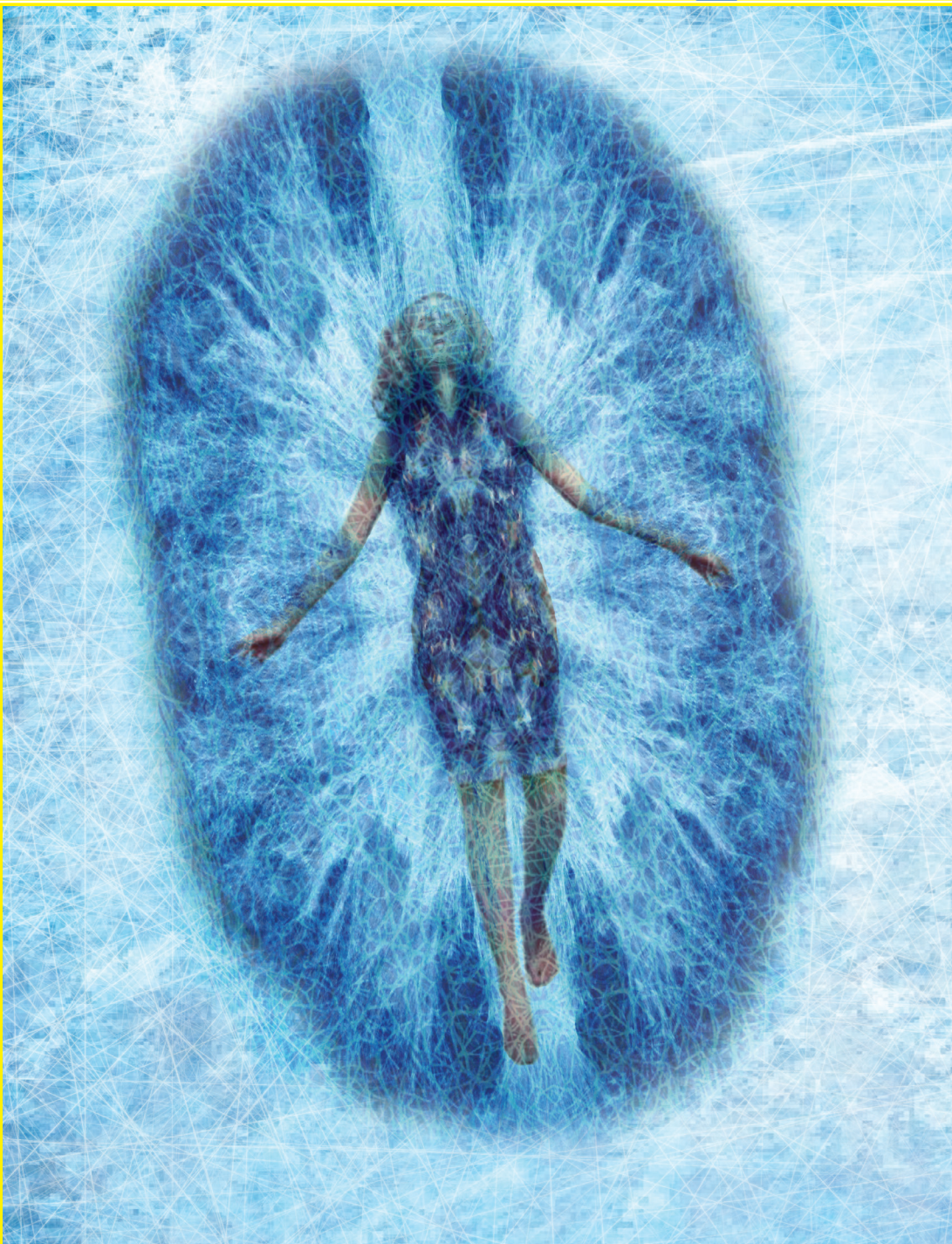


BJPpsych

The British Journal of Psychiatry



Pre-eclampsia and the risk of autism-spectrum disorder in offspring: meta-analysis

Berihun Assefa
Dachew *et al*

Effects of selective serotonin reuptake inhibitors on rating-scale-assessed suicidality in adults with depression

Jakob Näslund *et al*

Clinical outcomes of staff training in positive behaviour support to reduce challenging behaviour in adults with intellectual disability: cluster randomised controlled trial

Angela Hassiotis *et al*

Community treatment orders: an analysis of the first five years of use in England

Liam Trevithick *et al*

BJPsych

The British Journal of Psychiatry

ISSN 0007 - 1250

Editor Kamaldeep Bhui CBE**Associate Editors**

Shehzad Ali
Dinesh Bhugra
Matthew Broome
Alistair Burns
Patricia Casey
Mike Crawford
Elena Garralda
Simon Gilbody
(Editorials Editor)
Edgar Jones
Helen Killaspy
Julian Leff
Anne Lingford-Hughes
Philip McGuire
Giles Newton-Howes
(Reviews Editor)
Francis Anthony O'Neill
Femi Oyeboode
(Book Reviews Editor)
(Executive Contents Editor)
Jan Scott
James Shearer
Sukhwinder Shergill
Simon Wessely
Allan Young

Editorial Advisors

John Geddes
Martin Knapp

International Editorial Board

Regi T. Alexander (UK)
Ricardo Araya (UK)
Amanda Baxter (Australia)
Allan Beveridge (UK)
(Book Reviews Editor)
Jonathan Bisson (UK)
Alec Buchanan (USA)
Peter Byrne (UK)
(Executive Contents Editor)
Colin Campbell (UK)
(Correspondence Editor)
(Debate Editor)
Mary Cannon (Ireland)

Andrew Cheng (Taiwan)
John Cookson (UK)
Ilana Crome (UK)
Tim Crow (UK)
Pim Cuijpers (The Netherlands)
Kimberlie Dean (Australia)
Colin Drummond (UK)
Sara Evans-Lacko (UK)
Renee Fox (USA)
Peter Haddad (UK)
Madelyn Hicks (USA)
Matthew Hotopf (UK)
Robert Howard (UK)
Khalida Ismail (UK)
Assen Jablensky (Australia)
Eileen Joyce (UK)
Navneet Kapur (UK)
Kenneth Kaufman (USA)
Kenneth Kendler (USA)
Michael King (UK)
Stephen Lawrie (UK)
William Lee (UK)
Glyn Lewis (UK)
Shôn Lewis (UK)
Sean Lynch (UK)
Kwame McKenzie (Canada)
Gin Malhi (Australia)
Nick Meader (UK)
Nadia Micali (UK)
Marco Mula (UK)
Roger Mulder (New Zealand)
Frank Njenga (Kenya)
Aileen O'Brien (UK)
(Debate Editor)
Vikram Patel (India)
Michael Phillips (China)
Alexandra Pitman (UK)
Steven Reid (UK)
Emily Simonoff (UK)
Julia Sinclair (UK)
Swaran Singh (UK)
Katharine Smith (UK)
Dan Stein (South Africa)
Nori Takei (Japan)
Cornelia Thiels (Germany)

Derek Tracy (UK)
Rachel Upthegrove (UK)
J. L. Vazquez-Barquero (Spain)
Elizabeth Walsh (UK)
Danuta Wasserman (Sweden)
Richard Williams (UK)
Kiriakos Xenitidis (UK)
(Correspondence Editor)

Trainee Editors

Judith Harrison
Joseph Hayes

Statistical Advisors

Eva Petkova
Stephen Roberts
Pak Sham
Min Yang

Staff

Interim Head of Publishing
Michael Brown
Managing Editor
Abigail Cantor
Senior Publications Coordinator
Adwoa Okyere

Past Editors

Eliot Slater 1961–72
Edward H. Hare 1973–77
John L. Crammer 1978–83
Hugh L. Freeman 1984–93
Greg Wilkinson 1994–2003
Peter Tyrer 2003–13

Subscriptions

British Journal of Psychiatry (ISSN 0007-1250) is published monthly. The six issues starting January 2018 comprise Volume 212, the six issues starting July 2018 comprise Volume 213. Orders from non-members of the College, which must be accompanied by payment, may be sent to any bookseller or subscription agent or direct to the publishers: Cambridge University Press, Journals Fulfillment Department, UPH, Shaftesbury Road, Cambridge CB2 8BS, UK, email journals@cambridge.org; or in the USA, Canada and Mexico, to Cambridge University Press, Journals Fulfillment Department, 1 Liberty Plaza, Floor 20, New York, NY 10006, USA, email subscriptions_newyork@cambridge.org. Japanese prices for institutions are available from Kinokuniya Company Ltd, P.O. Box 55, Chitose, Tokyo 156, Japan.

The annual subscription prices (including delivery by air but excluding VAT) for Volumes 212/213 are as follows:

	INSTITUTIONS	INDIVIDUALS
Print and electronic	£518/\$925	£418/\$651
Electronic only	£425/\$652	£271/\$423

Single issues are £50 (US\$89 in the USA, Canada and Mexico) plus postage. EU subscribers (outside the UK) who are not registered for VAT should add VAT at their country's rate. VAT registered subscribers should provide their VAT registration number. Claims for missing issues should be made immediately on receipt of the subsequent issue.

Periodicals postage paid at New York, NY, and at additional mailing offices. POSTMASTER: Send address changes in USA, Canada and Mexico to: *British Journal of Psychiatry*, Cambridge University Press, Journals Fulfillment Department, 1 Liberty Plaza, Floor 20, New York, NY 10006, USA.

Queries from College members about missing or faulty copies should be sent to Customer Services, Cambridge University Press, email journals_societies@cambridge.org, tel. +44 (0)1223 326070.

Online access

British Journal of Psychiatry is hosted on the Cambridge Core service at <https://www.cambridge.org/core/journals/the-british-journal-of-psychiatry>.

Information about the College's publications is available at <http://www.rcpsych.ac.uk>.

Instructions to authors

Full instructions to authors are given at <https://www.cambridge.org/core/journals/the-british-journal-of-psychiatry/information/instructions-contributors>.

Advertising

Correspondence and copy should be addressed to: Stephen H. P. Mell, Advertising Manager, PTM Publishers Ltd, 41 Hart Close, Uckfield, East Sussex TN22 2DA, UK (email advertising@ptm-publishers.com); tel. 020 8642 0162)

Founded by J. C. Bucknill in 1853 as the *Asylum Journal* and known as the *Journal of Mental Science* from 1858 to 1963.

©The Royal College of Psychiatrists 2018. Unless so stated, material in the *British Journal of Psychiatry* does not necessarily reflect the views of the Editor or the Royal College of Psychiatrists. The publishers are not responsible for any error of omission or fact.

Printed in Great Britain by Henry Ling Limited, The Dorset Press, 23 High East Street, Dorchester, Dorset DT1 1HD.

This journal issue has been printed on FSC™-certified paper and cover board. FSC is an independent, non-governmental, not-for-profit organization established to promote the responsible management of the world's forests. Please see www.fsc.org for information.



The *British Journal of Psychiatry* is published monthly by the Royal College of Psychiatrists (a charity registered in England and Wales (228636) and in Scotland (SC038369). The Journal publishes original work in all fields of psychiatry. Manuscripts for publication should be submitted online at <https://mc.manuscriptcentral.com/bjpsych>.

All papers in this journal are peer-reviewed. No person is permitted to take any role in the peer-review of a paper in which they have an interest, defined as follows: fees or grants from, employment by, consultancy for, shared ownership in, or any close relationship with, an organisation whose interests, financial or otherwise, may be affected by the publication of the paper.

- A9 Editorial Board
A11 Highlights of this issue

Editorials

- 129 **Ketamine as anaesthesia for ECT: is there room to improve a gold standard treatment?**
Chittaranjan Andrade
- 131 **Psychotic major depression: challenges in clinical practice and research**
M. Heslin and A. H. Young
- 134 **Challenges and mental health needs of women in prison**
Annie Bartlett and Sheila Hollins

Analysis

- 137 **Restraint in mental health settings: is it time to declare a position?**
Faisal Sethi, John Parkes, Eric Baskind, Brodie Paterson and Aileen O'Brien

Review article

- 142 **Pre-eclampsia and the risk of autism-spectrum disorder in offspring: meta-analysis**
Berihun Assefa Dachew, Abdullah Mamun, Joemer Calderon Maravilla and Rosa Alati

Papers

- 148 **Effects of selective serotonin reuptake inhibitors on rating-scale-assessed suicidality in adults with depression**
Jakob Näslund, Fredrik Hieronymus, Alexander Lisinski, Staffan Nilsson and Elias Eriksson
- 155 **Impact of cholinesterase inhibitors or memantine on survival in adults with Down syndrome and dementia: clinical cohort study**
Nicole Eady, Rory Sheehan, Khadija Rantell, Amanda Sinai, Jane Bernal, Ingrid Bohnen, Simon Bonell, Ken Courtenay, Karen Dodd, Dina Gazizova, Angela Hassiotis, Richard Hillier, Judith McBrien, Kamalika Mukherji, Asim Naeem, Natalia Perez-Achiaga, Vijaya Sharma, David Thomas, Zuzana Walker, Jane McCarthy and André Strydom
- 161 **Clinical outcomes of staff training in positive behaviour support to reduce challenging behaviour in adults with intellectual disability: cluster randomised controlled trial**
Angela Hassiotis, Michaela Poppe, Andre Strydom, Victoria Vickerstaff, Ian S. Hall, Jason Crabtree, Rumana Z. Omar, Michael King, Rachael Hunter, Asit Biswas, Viv Cooper, William Howie and Michael J. Crawford
- 169 **Self-Stigma in Relatives of people with Mental Illness scale: development and validation**
E. Morris, C. Hippman, G. Murray, E.E. Michalak, J.E. Boyd, J. Livingston, A. Inglis, P. Carrion and J. Austin

- 174 **Struwwelpeter by Heinrich Hoffmann – psychiatry in literature**
Jonathan Davidson

- 175 **Community treatment orders: an analysis of the first five years of use in England**
Liam Trevithick, Jane Carlile, Sunil Nodiyal and Patrick Keown

Short report

- 180 **Long-term outcomes of trauma-focused treatment in psychosis**
David van den Berg, Paul A. J. M. de Bont, Berber M. van der Vleugel, Carlijn de Roos, Ad de Jongh, Agnes van Minnen and Mark van der Gaag

Columns

- 183 Correspondence
185 Book Reviews
188 Contents of the *American Journal of Psychiatry*
188 Contents of *BJPsych Advances*
189 Kaleidoscope
191 From the Editor's Desk

Cover picture

The Diver (2013) by Nathalie Frickey (b.1972)

Dr. med. Nathalie Frickey trained and worked in Germany, France and Austria. She is physician-turned-art-therapist and mother of three. She lives and works in Vienna, Austria.

In her exploration of the liminal spaces between arts and healing, she uses found imagery, words and found objects in restorative storytelling. All these elements are assembled via collage or poetry into a new and larger whole, reflecting individual and collective growth and evolution. Her personal journey of integrating early childhood trauma, and growing awareness of transgenerational and collective aspects of trauma in various kinds of disease shape her particular approach to art therapy as a healing practice. Her current focus is on working with patients with severe eating disorders and a history of trauma.

The Diver is about fear and isolation – total, primal terror, a state of cryo-preservation of the self. Individuals with complex post-traumatic stress disorder struggle to regain a sense of safety, to exit that cocoon of icy fear and reconnect with the warp and weft of the world and other people. The inner world experience in this case is quite distinct and different from the outer world experience since the fear itself projects a sphere of altered reality in which the sufferer exists.

We are always looking for interesting and visually appealing images for the cover of the *Journal* and would welcome suggestions or pictures, which should be sent to Dr Allan Beveridge, British Journal of Psychiatry, 21 Prescot street, London E1 8BB, UK or bjp@rcpsych.ac.uk.

