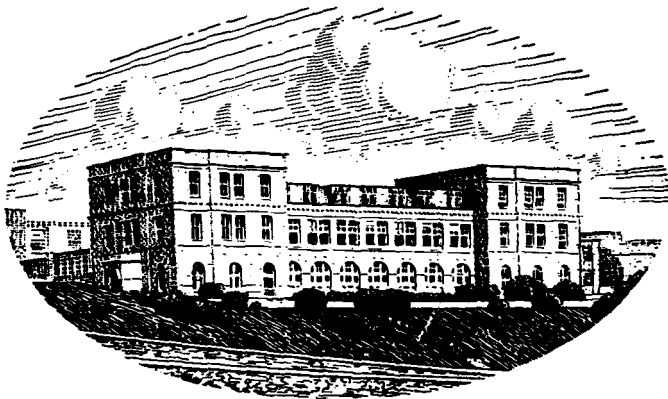


**JOURNAL OF THE
MARINE BIOLOGICAL ASSOCIATION
OF THE UNITED KINGDOM**

The Council of the Marine Biological Association wish it to be understood that they do not accept responsibility for the accuracy of statements published in this Journal, excepting when those statements are contained in an official report of the Council.

**JOURNAL OF THE
MARINE BIOLOGICAL
ASSOCIATION
OF THE UNITED KINGDOM**

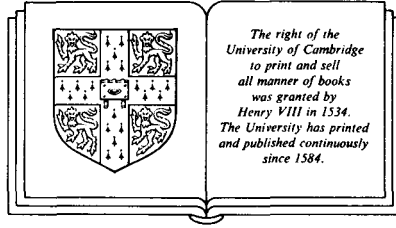


THE PLYMOUTH LABORATORY

VOLUME 65

1985

CAMBRIDGE UNIVERSITY PRESS
CAMBRIDGE
LONDON NEW YORK NEW ROCHELLE
MELBOURNE SYDNEY



PUBLISHED BY
THE PRESS SYNDICATE OF THE UNIVERSITY OF CAMBRIDGE

The Pitt Building, Trumpington Street, Cambridge CB2 1RP
32 East 57th Street, New York, NY 10022, USA
10 Stamford Road Oakleigh, Melbourne 3166 Australia

© Copyright Marine Biological Association of the U.K. 1985

Printed in Great Britain at the University Press, Cambridge

CONTENTS OF VOLUME 65

Number 1, pp. 1–277, 11 February 1985

Number 2, pp. 279–562, 1 May 1985

Number 3, pp. 563–842, 1 August 1985

Number 4, pp. 845–1132, 6 November 1985

	PAGE	
Report of the Council for 1984–85	1079	
Income and Expenditure Account and Balance Sheet	1127	
AL-MOHANNA, S. Y., NOTT, J. A. and LANE, D. J. W.		
Mitotic E- and secretory F-cells in the hepatopancreas of the shrimp <i>Penaeus semisulcatus</i> (Crustacea: Decapoda)	901	
ANDERSON, O. R., SWANBERG, N. R. and BENNETT, P.		
Laboratory studies of the ecological significance of host-algal nutritional associations in solitary and colonial radiolaria	263	
APRAHAMIAN, M. W. and BARR, C. D.		
The growth, abundance and diet of O-group sea bass, <i>Dicentrarchus labrax</i> , from the Severn Estuary	169	
BAMBER, R. N.		
The autecology of <i>Cyathura carinata</i> (Crustacea: Isopoda) in a cooling water discharge lagoon	181	
BAMBER, R. N., HENDERSON, P. A. and TURNPENNY, A. W. H.		
The early life history of the sand smelt (<i>Atherina presbyter</i>)	697	
BARR, C. D., <i>see</i> APRAHAMIAN and BARR		169
BATTY, R. S.		
<i>See</i> BLAXTER and BATTY	737	
<i>See</i> BLAXTER and BATTY	1031	
BENNETT, P., <i>see</i> ANDERSON, SWANBERG and BENNETT		263
BIRD, G. J. and HOLDICH, D. M.		
A remarkable tubicolous tanaid (Crustacea: Tanaidacea) from the Rockall Trough	563	
BISHOP, G. M., <i>see</i> NICHOLS, BISHOP and SIME		203
BLAXTER, J. H. S. and BATTY, R. S.		
The development of startle responses in herring larvae	737	
Herring behaviour in the dark: responses to stationary and continuously vibrating obstacles	1031	
BOWMAN, R. S., <i>see</i> KENDALL <i>et al.</i>		1009
BRACE, R. C. and QUICKE, D. L. J.		
Further analysis of individual spacing within aggregations of the anemone, <i>Actinia equina</i>	35	
<i>See also</i> DONOGHUE, QUICKE and BRACE	21	
<i>See also</i> QUICKE <i>et al.</i>	1	
BRAUNBECK, T. and DALES, R. P.		
The ultrastructure of the heart-body and extravasal tissue in the polychaete annelids <i>Neoamphitrite figulus</i> and <i>Arenicola marina</i>	653	
BROERTJES, J. J. S., WAARD, P. DE, KAMERLING, J. P. and VOGGT, P. A.		
Some characteristics of the non-protein moiety of vitellogenic substances in the starfish, <i>Asterias rubens</i> (L.)	79	

	PAGE
BUCKLIN, A.	
Biochemical genetic variation, growth and regeneration of the sea anemone, <i>Metridium</i> , of British shores	141
BURKART, B., <i>see</i> CRICK <i>et al.</i>	415
CAMPBELL, D.	
The life cycle of <i>Gymnophallus rebecqui</i> (Digenea: Gymnophallidae) and the response of the bivalve <i>Abra tenuis</i> to its metacercariae	589
CHAMBERLAIN, J. A., <i>see</i> CRICK <i>et al.</i>	415
CHAPMAN, A. R. O., <i>see</i> RICE and CHAPMAN	433
CHAPMAN, D. M.	
X-ray microanalysis of selected coelenterate statoliths	617
CHRISTIE, G.	
A comparative study of the reproductive cycles of three Northumberland populations of <i>Chaetozone setosa</i> (Polychaeta: Cirratulidae)	239
CLARIDGE, P. N., HARDISTY, M. W., POTTER, I. C. and WILLIAMS, C. V.	
Abundance, life history and ligulosis in the gobies (Teleostei) of the inner Severn Estuary	951
CLARIDGE, P. N. and POTTER, I. C.	
Distribution, abundance and size composition of mullet populations in the Severn Estuary and Bristol Channel.	325
<i>See also</i> POTTER and CLARIDGE	667
CLARKE, A., CLARKE, M. R., HOLMES, L. J. and WATERS, T. D.	
Calorific values and elemental analysis of eleven species of oceanic squids (Mollusca: Cephalopoda)	983
CLARKE, D. R. and KING, P. E.	
Spawning of herring in Milford Haven	629
CLARKE, M. R. and PASCOE, P. L.	
The influence of an electric light on the capture of deep-sea animals by a midwater trawl	373
The stomach contents of a Risso's dolphin (<i>Grampus griseus</i>) stranded at Thurlestone, South Devon	663
<i>See also</i> CLARKE <i>et al.</i>	983
COOMBS, S. H., FOSH, C. A. and KEEN, M. A.	
The buoyancy and vertical distribution of eggs of sprat (<i>Sprattus sprattus</i>) and pilchard (<i>Sardina pilchardus</i>)	461
CORNER, E. D. S.	
<i>See</i> O'HARA <i>et al.</i>	113
<i>See</i> PRAHL <i>et al.</i>	547
CRANMER, G. J.	
Recent investigations into the distribution of regular echinoids in the North Sea	351
<i>See also</i> SIME and CRANMER	583
CRICK, R. E., BURKART, B., CHAMBERLAIN, J. A., JR and MANN, K. O.	
Chemistry of calcified portions of <i>Nautilus pompilius</i>	415
CRISP, D. J., YULE, A. B. and WHITE, K. N.	
Feeding by oyster larvae: the functional response, energy budget and a comparison with mussel larvae	759
DALES, R. P., <i>see</i> BRAUNBECK and DALES	653

	PAGE
DANDO, P. R. and DEMIR, N.	
On the spawning and nursery grounds of bass, <i>Dicentrarchus labrax</i> , in the Plymouth area	159
<i>See also</i> DEMIR, SOUTHWARD and DANDO	801
DEITH, M. R.	
The composition of tidally deposited growth lines in the shell of the edible cockle, <i>Cerastoderma edule</i>	573
DEMIR, N., SOUTHWARD, A. J. and DANDO, P. R.	
Comparative notes on postlarvae and pelagic juveniles of the rocklings <i>Gaidropsaurus mediterraneus</i> , <i>Rhinonemus cimbrius</i> , <i>Ciliata mustela</i> and <i>C. septentrionalis</i>	801
<i>See also</i> DANDO and DEMIR	159
DEPLEDGE, M. H.	
The influence of nutritional state on the circulatory and respiratory physiology of the shore crab, <i>Carcinus maenas</i>	69
DIGBY, P. S. B.	
Reducing activity and the formation of base in the shore crab, <i>Carcinus maenas</i>	505
DILLY, P. N.	
A note on the status of <i>Rhabdopleura</i> from Bermuda.	987
DONOGHUE, A. M., QUICKE, D. L. J. and BRACE, R. C.	
Biochemical-genetic and acrorhagial characteristics of pedal disc colour phenotypes of <i>Actinia equina</i>	21
<i>See also</i> QUICKE <i>et al.</i>	1
DOUGLAS, A. E.	
Growth and reproduction of <i>Convoluta roscoffensis</i> containing different naturally occurring algal symbionts	871
DROOP, M. R.	
Fluorescence and the light/nutrient interaction in <i>Monochrysis</i>	221
<i>See also</i> TETT, HEANEY and DROOP	487
DUNCAN, J. A. R., <i>see</i> GORDON and DUNCAN.	475
DYER, M. F.	
The distribution of <i>Hyas araneus</i> (L.) and <i>Hyas coarctatus</i> Leach (Crustacea: Decapoda: Brachyura) in the North Sea and the Svalbard region	195
EGLINTON, G., <i>see</i> PRAHL <i>et al.</i>	547
ELLIS, C. J.	
The effects of proximity to the continental slope sea-bed on pelagic halocyprid ostracods at 49 °N, 13 °W	923
FOSH, C. A., <i>see</i> COOMBS, FOSH and KEEN	461
FREEMAN, R. F. H. and SHUTTLEWORTH, T. J.	
Distribution of intracellular sodium, potassium and chloride in <i>Arenicola marina</i> equilibrated to diluted sea water	395
GAGE, J. D.	
New Synaptidae (Holothuroidea: Apoda) from the Rockall Trough	255
GARWOOD, P. R. and KENDALL, M. A.	
The reproductive cycles of <i>Monodonta lineata</i> and <i>Gibbula umbilicalis</i> on the coast of mid-Wales	993
GEORGE, C. L. and WARWICK, R. M.	
Annual macrofauna production in a hard-bottom reef community	713

	PAGE
GIBBS, P. E.	
On the genus <i>Phascolion</i> (Sipuncula) with particular reference to the north-east Atlantic species	311
GORDON, J. D. M. and DUNCAN, J. A. R.	
The biology of fish of the family Moridae in the deep-water of the Rockall Trough	475
GUDMUNDSSON, H.	
Life history patterns of polychaete species of the family Spionidae	93
GUILLOU, J. and SAURIAU, P. G.	
Some observations on the biology and the ecology of a <i>Venus striatula</i> population in the Bay of Douarnenez, Brittany	889
HARDISTY, M. H., <i>see</i> CLARIDGE <i>et al.</i>	951
HEANEY, S. I., <i>see</i> TETT, HEANEY and DROOP	487
HENDERSON, P. A., <i>see</i> BAMBER, HENDERSON and TURNPENNY	697
HENSEY, M. P., <i>see</i> RODHOUSE <i>et al.</i>	55
HIGGINS, R. P.	
The genus <i>Echinoderes</i> (Kinorhyncha: Cyclorhagida) from the English Channel	785
HOLDICH, D. M., <i>see</i> BIRD and HOLDICH	563
HOLME, N. A. and WILSON, J. B.	
Faunas associated with longitudinal furrows and sand ribbons in a tide-swept area in the English Channel.	1051
HOLMES, L. J., <i>see</i> CLARKE <i>et al.</i>	983
JONES, H. D.	
Vascular and pericardiac pressures in <i>Ascidella aspersa</i> (Urochordata: Ascidiacea)	911
JØRGENSEN, J. M.	
On the fine structure of lateral-line canal organs of the herring (<i>Clupea harengus</i>)	751
KAMERLING, J. P., <i>see</i> BROERTJES <i>et al.</i>	79
KEELING, T. F., <i>see</i> QUICKE <i>et al.</i>	1
KEEN, M. A., <i>see</i> COOMBS, FOSH and KEEN	461
KENDALL, M. A., BOWMAN, R. S., WILLIAMSON, P. and LEWIS, J. R.	
Annual variation in the recruitment of <i>Semibalanus balanoides</i> on the north Yorkshire coast 1969-81	1009
<i>See also</i> GARWOOD and KENDALL	993
KING, P. E., <i>see</i> CLARKE and KING	629
KRESS, A.	
A structural analysis of the spermatophore of <i>Runcina ferruginea</i> Kress (Opisthobranchia: Cephalaspidea)	337
LANE, D. J. W., <i>see</i> AL-MOHANNA, NOTT and LANE	901
LE CORRE, P., <i>see</i> MORIN, LE CORRE and LE FÈVRE	677
LE FÈVRE, J., <i>see</i> MORIN, LE CORRE and LE FÈVRE	677
LE PENNEC, M. and YANKSON, K.	
Morphogenesis of the hinge in the larva and postlarva of the brackish-water cockle, <i>Cerastoderma glaucum</i>	881
LEWIS, J. R., <i>see</i> KENDALL <i>et al.</i>	1009

	PAGE
LIPINSKI, M. R.	
Laboratory survival of <i>Alloteuthis subulata</i> (Cephalopoda: Loliginidae) from the Plymouth area	845
MADDOCK, L., <i>see</i> PINGREE and MADDOCK	969
MANN, K. O., <i>see</i> CRICK <i>et al.</i>	415
MÖLLER, P.	
Production of abundance of juvenile <i>Nereis diversicolor</i> , and oogenic cycle of adults in shallow waters of western Sweden.	603
MORIN, P., LE CORRE, P. and LE FÈVRE, J.	
Assimilation and regeneration of nutrients off the west coast of Brittany	677
NAYLOR, E., <i>see</i> REID and NAYLOR	85
NEAL, A. C., <i>see</i> O'HARA <i>et al.</i>	113
NICHOLS, D., BISHOP, G. M. and SIME, A. A. T.	
Reproductive and nutritional periodicities in populations of the European sea-urchin, <i>Echinus esculentus</i> (Echinodermata: Echinoidea) from the English Channel	203
NOTT, J. A., <i>see</i> AL-MOHANNA, NOTT and LANE	901
O'HARA, S. C. M., NEAL, A. C., CORNER, E. D. S. and PULSFORD, A. L.	
Interrelationships of cholesterol and hydrocarbon metabolism in the shore crab, <i>Carcinus</i>	113
<i>See also</i> PRAHL <i>et al.</i>	547
PAGETT, R. M.	
Some observations upon the distribution of strontium in four species of ophiuroids – <i>Ophiocomina nigra</i> (Abildgaard), <i>Ophiura albida</i> (Forbes), <i>Ophiothrix suensoni</i> (Lütken) and <i>Ophioderma cinereum</i> (Müller and Troschel)	293
PASCOE, P. L.	
<i>See</i> CLARKE and PASCOE	373
<i>See</i> CLARKE and PASCOE	663
PINGREE, R. D. and MADDOCK, L.	
Stokes, Euler and Lagrange aspects of residual tidal transports in the English Channel and the Southern Bight of the North Sea	969
POTTER, I. C. and CLARIDGE, P. N.	
Seasonal catches, size and meristic data for sprat, <i>Sprattus sprattus</i> , in the Severn Estuary	667
<i>See also</i> CLARIDGE <i>et al.</i>	951
<i>See also</i> CLARIDGE and POTTER	325
POTTS, G. W.	
The nest structure of the corkwing wrasse, <i>Crenilabrus melops</i> (Labridae: Teleostei)	531
PRAHL, F. G., EGLINTON, G., CORNER, E. D. S. and O'HARA, S. C. M.	
Faecal lipids released by fish feeding on zooplankton	547
PULSFORD, A. L., <i>see</i> O'HARA <i>et al.</i>	113
QUICKE, D. L. J., DONOGHUE, A. M., KEELING, T. F. and BRACE, R. C.	
Littoral distributions and evidence for differential post-settlement selection of the morphs of <i>Actinia equina</i>	1
<i>See also</i> BRACE and QUICKE	35
<i>See also</i> DONOGHUE, QUICKE and BRACE	21
RATCLIFFE, N. A., <i>see</i> WHITE, RATCLIFFE and ROSSA	857

	PAGE
REDPATH, K. J.	
Growth inhibition and recovery in mussels (<i>Mytilus edulis</i>) exposed to low copper concentrations	421
REID, D. G. and NAYLOR, E.	
Free-running, endogenous semilunar rhythmicity in a marine isopod crustacean	85
RICE, E. L. and CHAPMAN, A. R. O.	
A numerical taxonomic study of <i>Fucus distichus</i> (Phaeophyta)	433
RODEN, C. M., <i>see</i> RODHOUSE <i>et al.</i>	55
RODHOUSE, P. G., RODEN, C. M., HENSEY, M. P. and RYAN, T. H.	
Production of mussels, <i>Mytilus edulis</i> , in suspended culture and estimates of carbon and nitrogen flow: Killary Harbour, Ireland	55
ROSSA, M., <i>see</i> WHITE, RATCLIFFE and ROSSA	857
RUSSELL, G.	
Some anatomical and physiological differences in <i>Chorda filum</i> from coastal waters of Finland and Great Britain	343
RYAN, T. H., <i>see</i> RODHOUSE <i>et al.</i>	55
SAURIAU, P. G., <i>see</i> GUILLOU and SAURIAU	889
SERVICE, M. and WARDLAW, A. C.	
Bactericidal activity of coelomic fluid of the sea urchin, <i>Echinus esculentus</i> , on different marine bacteria	133
SHUTTLEWORTH, T. J., <i>see</i> FREEMAN and SHUTTLEWORTH	395
SIME, A. A. T. and CRANMER, G. J.	
Age and growth of North Sea echinoids	583
<i>See also</i> NICHOLS, BISHOP and SIME	203
SOUTHWARD, A. J., <i>see</i> DEMIR, SOUTHWARD and DANDO	801
SWANBERG, N. R., <i>see</i> ANDERSON, SWANBERG and BENNETT	263
TETT, P., HEANEY, S. I. and DROOP, M. R.	
The Redfield ratio and phytoplankton growth rate	487
TUCKER, R.	
Age validation studies on the spines of the spurdog (<i>Squalus acanthias</i>) using tetracycline	641
TURNPENNY, A. W. H., <i>see</i> BAMBER, HENDERSON and TURNPENNY	697
VOOGT, P. A., <i>see</i> BROERTJES <i>et al.</i>	79
WAARD, P. DE, <i>see</i> BROERTJES <i>et al.</i>	79
WAITE, J. H.	
Catechol oxidase in the byssus of the common mussel, <i>Mytilus edulis</i> L.	359
WALKER, G., <i>see</i> YULE and WALKER	707
WARDLAW, A. C., <i>see</i> RODHOUSE <i>et al.</i>	133
WARWICK, R. M., <i>see</i> GEORGE and WARWICK	713
WATERS, T. D., <i>see</i> CLARKE <i>et al.</i>	983
WEBSTER, S. G.	
The effect of eyestalk removal, wounding and limb loss upon moulting and proecdysis in the prawn <i>Palaemon elegans</i> (Rathke)	279

	PAGE
WHEELER, A.	
A record of the white marlin, <i>Tetrapturus albidus</i> (Istiophoridae: Perciformes: Osteichthyes) from the British coast	305
WHITE, K. N., RATCLIFFE, N. A. and ROSSA, M.	
The antibacterial activity of haemocyte clumps in the gills of the shore crab, <i>Carcinus maenas</i>	857
See also CRISP, YULE and WHITE	759
WILLIAMS, C. V., see CLARIDGE et al.	951
WILLIAMSON, P., see KENDALL et al.	1009
WILSON, J. B., see HOLME and WILSON.	1051
YANKSON, K., see LE PENNEC and YANKSON.	881
YULE, A. B. and WALKER, G.	
Settlement of <i>Balanus balanoides</i> : the effect of cyprid antennula secretion.	707
See also CRISP, YULE and WHITE	759

CORRIGENDA

Page 255, line 32, for ES 190 read ES 190(3).

Page 255, line 33, for ES 204 read ES 204(1).

Page 285, Fig. 5 legend, line 2, for $[A(R)/(B(R)) \times 100]$ read $[A(R)/(B(R))] \times 100$.

Page 423, line 40, for E:C ratio = $\frac{\ln L_{\text{experimental}} \times 100}{\ln L_{\text{control}}}$ read E:C ratio = $\frac{\Delta \ln L_{\text{experimental}} \times 100}{\Delta \ln L_{\text{control}}}$.

THE MARINE BIOLOGICAL ASSOCIATION OF THE UNITED KINGDOM

THE ASSOCIATION was founded in 1884 to promote accurate researches leading to the advancement of zoological and botanical science and to an increase in our knowledge of the food, life, conditions and habits of British fishes. The work of the Association is controlled by a Council elected annually by its subscribing members.

Professor T. H. Huxley took the chair at the initial meeting held in the rooms of the Royal Society and was elected the first President. Among those present were Sir John Lubbock (afterwards Lord Avebury), Sir Joseph Hooker, Professor H. N. Moseley, Mr G. J. Romanes, and Sir E. Ray Lankester who, after Professor Huxley, was for many years president of the Association. It was decided to build a laboratory at Plymouth, where a rich and varied fauna is found.

The Plymouth Laboratory was opened in June 1888, and, since that date, considerable additions have been made to the buildings, including a library, lecture-hall, and extensive laboratory accommodation with up-to-date equipment. Additional sea-water reservoirs have also been built, and an aquarium, modernized in 1959, opened to the public.

Since its foundation the Association has been supported by subscriptions and donations from private members, universities, learned societies, the Fishmongers' Company and other public bodies. For some time past, however, the main financial support for the work of the Plymouth Laboratory has come from Government funds, and since 1965 the Laboratory has been grant-aided through the Natural Environment Research Council.

The Marine Biological Association, under the direction of its Council, undertakes research in all branches of marine science and the main results are published in this journal. Accounts of the laboratory and aquarium are to be found in Vol. 27 (p. 761), Vol. 39 (p. 391) and Vol. 43 (p. 281), and summaries of the activities and research of the Association are given annually in the Report of the Council in the November issue of the Journal.

The laboratory is open throughout the year and its work is carried out by a fully qualified research staff under the supervision of the Director. The names of the members of the staff will be found on the inner page of the front cover. Accommodation is available for British and foreign scientific workers who wish to carry out independent research in all branches of marine science. Arrangements are made for courses for advanced students, and marine animals and plants are supplied to educational institutions.

Work at sea is undertaken by three research vessels and by a motor boat, and these also collect the specimens required in the laboratory.

TERMS OF MEMBERSHIP

	£
Annual Members, receiving the Journal . . . per annum	15.00
Annual Members, without the Journal . . . per annum	3.00
Founders	100.00
Governors	500.00

Annual subscriptions become due on 1 January.

Members of the Association have the following rights and privileges: they elect annually the Officers and Council; they are entitled to receive the Journal of the Association at a reduced rate; they are admitted to view the laboratory at Plymouth; they have the first claim to rent a place in the laboratory for research, with use of tanks, boats, etc.; they have the privilege of occupying a table for one week in each year free of charge; and they have access to the books in the library at Plymouth during working hours.

The Commissioners of Inland Revenue have approved the Association for the purposes of Section 16, Finance Act, 1958, and that the whole of the annual subscription paid by a member who qualifies for relief under the section will be allowable as a deduction from his emoluments assessable to income tax under Schedule E.

All correspondence should be addressed to the Director, The Laboratory, Citadel Hill, Plymouth,

PL1 2PB.

CONTENTS

	PAGE
QUICKE, D. L. J., DONOGHUE, A. M., KEELING, T. F. and BRACE, R. C. Littoral distributions and evidence for differential post-settlement selection of the morphs of <i>Actinia equina</i>	1
DONOGHUE, A. M., QUICKE, D. L. J. and BRACE, R. C. Biochemical-genetic and acrorhagial characteristics of pedal disc colour phenotypes of <i>Actinia equina</i>	21
BRACE, R. C. and QUICKE, D. L. J. Further analysis of individual spacing within aggregations of the anemone, <i>Actinia equina</i>	35
RODHOUSE, P. G., RODEN, C. M., HENSEY, M. P. and RYAN, T. H. Production of mussels, <i>Mytilus edulis</i> , in suspended culture and estimates of carbon and nitrogen flow: Killary Harbour, Ireland	55
DEPLEDGE, M. H. The influence of nutritional state on the circulatory and respiratory physiology of the shore crab, <i>Carcinus maenas</i>	69
BROERTJES, J. J. S., WAARD, P. DE, KAMERLING, J. P. and VOOGT, P. A. Some characteristics of the non-protein moiety of vitellogenic substances in the starfish, <i>Asterias rubens</i> (L.)	79
REID, D. G. and NAYLOR, E. Free-running, endogenous semilunar rhythmicity in a marine isopod crustacean	85
GUDMUNDSSON, H. Life history patterns of polychaete species of the family Spionidae	93
O'HARA, S. C. M., NEAL, A. C., CORNER, E. D. S. and PULSFORD, A. L. Interrelationships of cholesterol and hydrocarbon metabolism in the shore crab, <i>Carcinus</i>	113
SERVICE, M. and WARDLAW, A. C. Bactericidal activity of coelomic fluid of the sea urchin, <i>Echinus esculentus</i> , on different marine bacteria	133
BUCKLIN, A. Biochemical genetic variation, growth and regeneration of the sea anemone, <i>Metridium</i> , of British shores	141
DANDO, P. R. and DEMIR, N. On the spawning and nursery grounds of bass, <i>Dicentrarchus labrax</i> , in the Plymouth area	159
APRAHAMIAN, M. W. and BARR, C. D. The growth, abundance and diet of O-group sea bass, <i>Dicentrarchus labrax</i> , from the Severn Estuary	169
BAMBER, R. N. The autecology of <i>Cyathura carinata</i> (Crustacea: Isopoda) in a cooling water discharge lagoon	181
DYER, M. F. The distribution of <i>Hyas araneus</i> (L.) and <i>Hyas coarctatus</i> Leach (Crustacea: Decapoda: Brachyura) in the North Sea and the Svalbard region	195
NICHOLS, D., BISHOP, G. M. and SIME, A. A. T. Reproductive and nutritional periodicities in populations of the European sea-urchin, <i>Echinus esculentus</i> (Echinodermata: Echinoidea) from the English Channel	203
DROOP, M. R. Fluorescence and the light/nutrient interaction in <i>Monochrysis</i>	221
CHRISTIE, G. A comparative study of the reproductive cycles of three Northumberland populations of <i>Chaetozone setosa</i> (Polychaeta: Cirratulidae)	239
GAGE, J. D. New Synaptidae (Holothuroidea: Apoda) from the Rockall Trough	255
ANDERSON, O. R., SWANBERG, N. R. and BENNETT, P. Laboratory studies of the ecological significance of host-algal nutritional associations in solitary and colonial radiolaria	263
ANNOUNCEMENT	273
BOOK NOTICES	275

© Copyright by the Marine Biological Association of the UK 1985

The subscription price of volume 65, 1985 of the Journal to non-members of the Association is £98.00 net a volume of four parts, post free, or US \$240.00 in USA and Canada, payable in advance. Single parts cost £27.00 (US \$70.00 in USA and Canada) plus postage. Subscriptions may be sent to any bookseller or to Cambridge University Press, The Edinburgh Building, Shaftesbury Road, Cambridge CB2 2RU, or in the USA and Canada, to Cambridge University Press, 32 East 57th Street, New York, 10022. All orders must be accompanied by payment.

CAMBRIDGE UNIVERSITY PRESS

THE PITT BUILDING, TRUMPINGTON STREET, CAMBRIDGE CB2 1RP

32 EAST 57TH STREET, NEW YORK, NY 10022, USA

10 STAMFORD ROAD, OAKLEIGH, MELBOURNE 3166, AUSTRALIA

Printed in Great Britain at the University Press, Cambridge