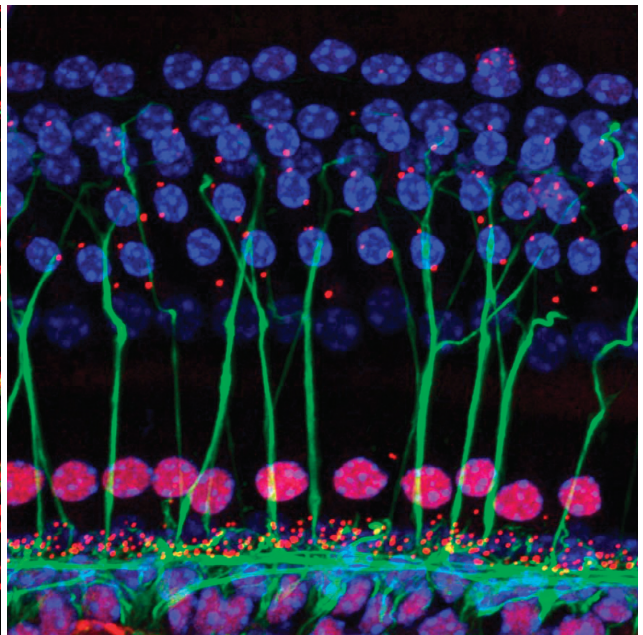
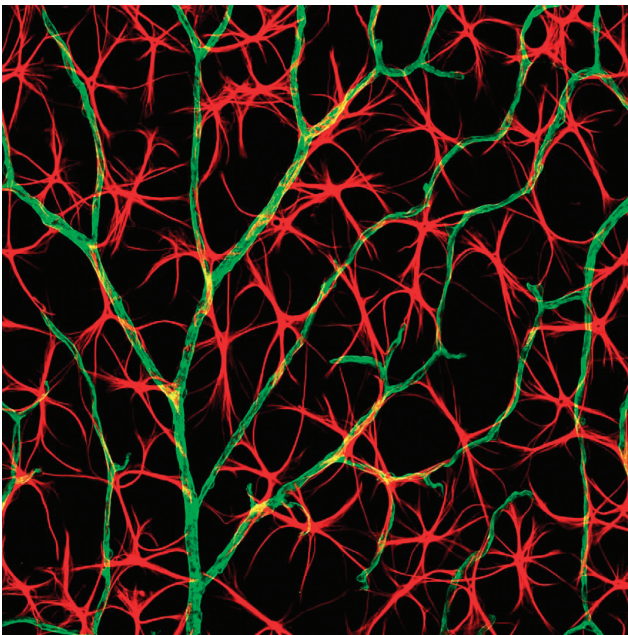
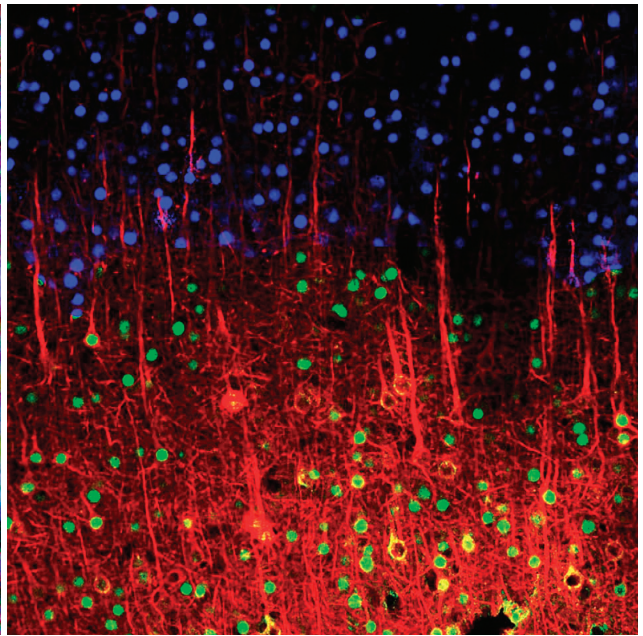
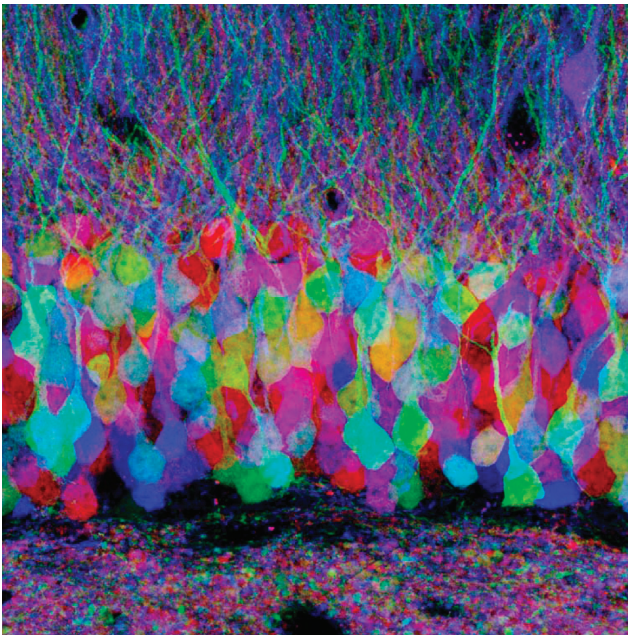


# Microscopy TODAY

Volume 22 Number 4 2014 July

https://doi.org/10.1017/S1551929514000625 Published online by Cambridge University Press



# Revolutionary SEM Control Unveiled at M&M 2014

## *EM Wizard Changes the Game*

SEM operation, as you currently know it, is about to change. Groundbreaking computer-assisted technology from Hitachi, referred to as EM Wizard, offers a new level of SEM operation and control. Expert or novice, the result is now the same: Highest quality nano-scale images at your fingertips!

- With EM Wizard, beginners become experts overnight.
- Automated, intuitive on-demand image optimization on the fly.
- Visual and interactive guide offers 'pick and choose' SEM modes to ensure best operating conditions.
- Tilting and rotating the sample is simple; the image stays centered and in focus with the 3D MultiFinder tool.

Experience EM Wizard on the all new Hitachi SU5000 FE-SEM.

**Visit us at M&M 2014 (Booth# 218)  
August 3-7, 2014, Hartford, CT**

*Inspiring Innovation through Collaboration*



# M&M 2014

## MICROSCOPY & MICROANALYSIS

AUGUST 3 – 7 • HARTFORD, CT



**4 FULL DAYS** Symposia, tutorials, exhibits, posters, short courses & workshops

**Visit Often for Updates!**

<http://microscopy.org/MandM/2014>

**Call for Papers**

Paper Submission Open: November 15, 2013

**Paper Submission Portal**

Paper Submission Deadline: February 8, 2014

**Program Details**

**Awards Information**

**Hartford Area & Hotel Information**

Hotel reservations available  
January 2014

**Online Registration**

Opens February 2014



**Image at Top:** Cathodoluminescence image of composite SiC-diamond cutting tool; Colin MacRae, CSIRO-Minerals, Clayton, Victoria, Australia

# Raise your confidence

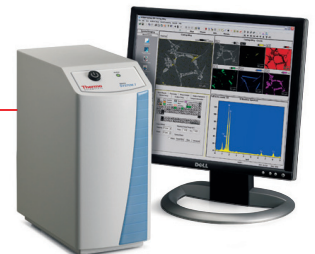
Spectral imaging on the **Thermo Scientific NORAN System 7** creates new opportunities to discover what is truly in your sample. Our UltraDry detector and analyzer electronics ensure that you collect as much data from the sample as possible. Go beyond simple elemental EDS map analysis; our exclusive COMPASS™ software processes spectral imaging data using principal component and statistical analyses to reveal unique phases and enrich your understanding of materials.

## See what's really in your sample

• Discover more: [thermoscientific.com/microanalysis](http://thermoscientific.com/microanalysis)



**UltraDry EDS Detector**  
Fastest Collection, Most Accuracy



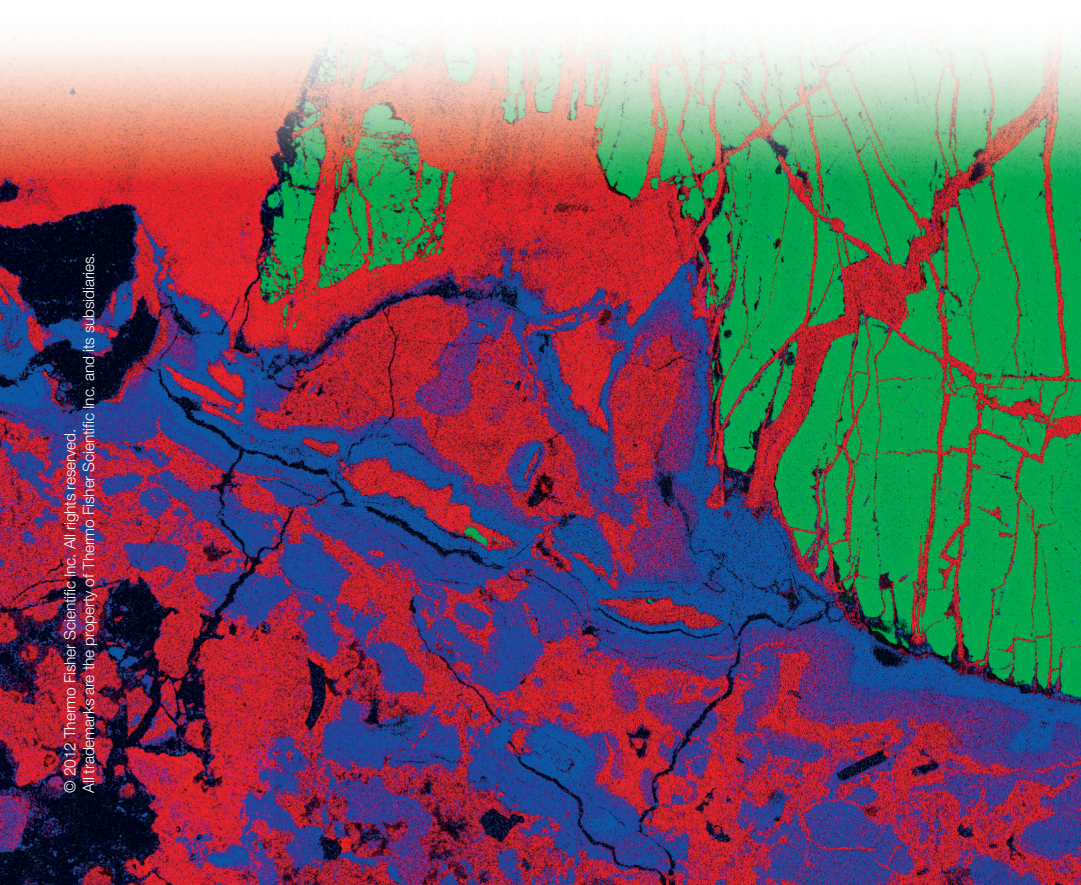
**NORAN™ System 7**  
Integrated X-ray Microanalysis System



**QuasOr EBSD**  
Simultaneous EDS. Better data.



**MagnaRay WDS**  
Resolution with EDS Ease of Use



# Contents

## Light Microscopy

- 12 A Decade of BioScapes Competitions**  
Charles E. Lyman and Philip Oshel
- 18 Living Images from the Birth of Microscopy**  
Brian J. Ford
- 24 Optical Tweezers for Quantitative Force Measurements and Live Cell Experiments**  
Philipp Rauch and Torsten Jähnke

## Instrumentation

- 32 The Dual-Beam—Its Birth, Progress, and Future**  
John Williams
- 38 Improving the Environment for a High-Performance SEM**  
Roland Kappel

## Biological Specimen Preparation

- 44 Modification of Leica EM PACT2 and AFS Equipment for More Efficient High-Pressure Freezing and Freeze-Substitution Sample Preparation**  
Irina Kolotuev
- 50 Nanoparticle Tagging of Live Cells to Monitor Cell Migration**  
Cheryl A. Miller

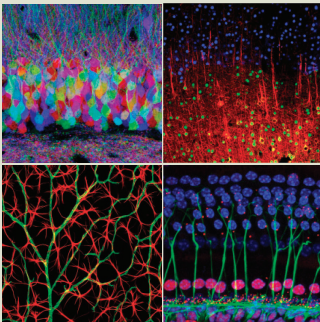
## Microscopy Education

- 54 Microscopy in the Classroom: Evolution of an Education and Outreach Community**  
Elaine F. Schumacher, Charles E. Lyman, Craig Queenan, and Alyssa Calabro

## Departments

- 7 Editorial**
- 8 Carmichael's Concise Review**
- 60 Microscopy Pioneers**
- 62 Industry News**
- 64 Product News**
- 66 NetNotes**
- 76 Calendar of Meetings**
- 81 Dear Abbe**
- 82 Index of Advertisers**

### About the Cover



Confocal light microscope images of mouse organs. Various magnifications.

See article by Lyman and Oshel.

Whether it's the latest  
innovative products,  
or the necessities you  
depend on every day,  
**EMS has it.**

SILICON WAFER CLEAVING  
EQUIPMENT

CRYO-SEM PREPARATION

DIGITAL MICROSCOPES

SPECIMEN STAGES

MICROSCOPE PLATFORMS

VACUUM GREASES

SLIDE PRINTING

HOLEY CARBON GRIDS

FLUORESCENCE VIEWING  
SYSTEMS

FLUOROPOLYMER FILMS

FLUORESCENCE ENHANCING  
SLIDES

FREEZE SUBSTITUTION KIT

NANOMANIPULATION SYSTEMS

INCUBATORS

VACUUM PUMPS

and much more.

**Electron  
Microscopy  
Sciences**

P.O. Box 550 • 1560 Industry Rd.

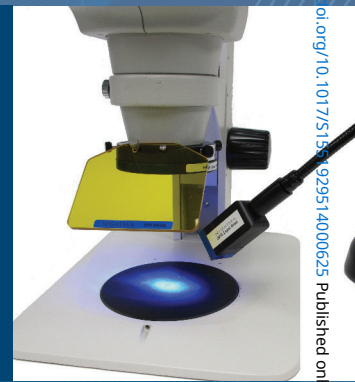
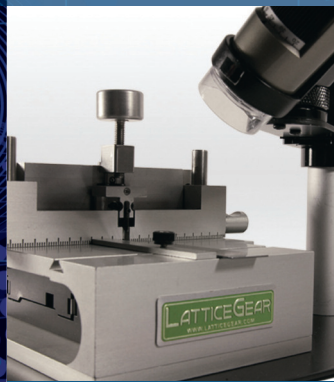
Hatfield, Pa 19440

Tel: (215) 412-8400

Fax: (215) 412-8450

email: sgkcock@aol.com

www.emsdiasum.com



**THE NEW EMS FULL LINE CATALOG IS COMING SOON  
IN 2014, WITH MORE NEW PRODUCTS THAN EVER.**

