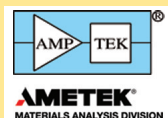


### Amptek Inc.

Tel: 781-275-2242  
 Email: sales@amptek.com  
 www.amptek.com



#### FAST SDD® Detector for EDS (SEM)

**APPLICATIONS:** Scanning Electron Microscopes • X-ray Fluorescence • Energy-Dispersive X-ray Spectrometry • Non-destructive Analysis • Elemental Analysis

**FEATURES:** SDD detectors for EDS-XRF use with SEMs by OEMs. Low energy response of the AmpTek FAST SDD® extends down to beryllium (Be).

<http://amptek.com/products/eds-sem-applications-with-c2-window/>



### Basler, Inc.

Tel: +1 610 717 0171  
 Email: sales.usa@baslerweb.com  
 www.baslerweb.com



#### Digital Microscope Cameras

**APPLICATIONS:** Microscopy for clinical, life science and veterinary applications • Material inspection & quality control • Diagnostic labs • Fluorescence microscopy • Education

**FEATURES:** High sensitivity, excellent image quality and color reproduction, easy to use microscopy software, outstanding price/performance ratio—Basler provides over 25 years of vision technology experience and leading digital camera technology.

[www.baslerweb.com/microscopy](http://www.baslerweb.com/microscopy)



### Bruker Nano Surfaces

Tel: 805-967-1400  
 Email: productinfo@bruker.com  
 www.bruker.com/AFM



#### Dimension FastScan AFM

**APPLICATIONS:** Atomic Force Microscopy • High Resolution AFM Imaging • Nanomechanical Analysis • Nanoelectrical Measurements • Nanochemical Measurements

**FEATURES:** FastScan achieves highest resolution imaging — any time, every time; unleashing bandwidth to go fast and explore real-time changes; and capturing complete quantitative nanoscale property data.

[www.bruker.com/FastScan](http://www.bruker.com/FastScan)



#### BioScope Resolve AFM

**APPLICATIONS:** BioAFM • Cell Mechanical Properties • Molecular Imaging • Cell Imaging

**FEATURES:** BioScope Resolve provides highest resolution, fast imaging for molecular and cellular research, enabling a complete suite of cell mechanics measurements, and delivering the ultimate integration of AFM with advanced optical microscopy techniques.

[www.bruker.com/BioAFM](http://www.bruker.com/BioAFM)



### Opterra II Swept-Field Confocal Microscope

**APPLICATIONS:** High-Speed Live-Cell Imaging • Photomanipulation • High-Speed Volumetric Imaging • 3D Montages

**FEATURES:** Opterra II proprietary pinhole array technology combines confocal resolution with wide-field imaging speed; enabling short acquisition times and cell-protecting minimization of photobleaching and phototoxicity for advanced live-cell imaging.



[www.bruker.com/Opterra](http://www.bruker.com/Opterra)

### Vutara 352 Super-Resolution Microscope

**APPLICATIONS:** Super-Resolution Microscopy • Video-Rate Single-Molecule Localization • Quantitative Analysis • Correlative High Speed Confocal Imaging

**FEATURES:** Vutara 352 provides the fastest super-resolution, single-molecule localization (SML) commercially available; enabling 3D SML and video-rate nanoscopy and deep imaging of 3D sections on live cells quickly and easily.



[www.bruker.com/Vutara](http://www.bruker.com/Vutara)

### CoolLED Ltd

Tel: 1-800-877-0128  
 Email: info@cooled.com  
 www.cooled.com



#### pE-Series Illumination Systems

**APPLICATIONS:** • Fluorescence Microscopy Illuminators • Light Microscopy • Lamps and Light Sources • LED Illumination • Live Cell Imaging

**FEATURES:** CoolLED offers a comprehensive range of LED illumination systems for bioscience and clinical microscopy. Contact the CoolLED team to learn more.



<http://www.cooled.com/products/>

### Deben

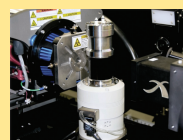
Tel: +44 (0) 1359 244 870;  
 +1 (201) 410 5028  
 Email: paulg@deben.co.uk  
 www.deben.co.uk



#### In-Situ Testing for Microscopy

**APPLICATIONS:** Micro CT tensile scanning stages • Centaurus scintillator CL and back scattered electron (BSE) detectors • STEM detectors for SEM • SEM heating and cooling Peltier stages • Microtest tensile and compression stages

**FEATURES:** Deben manufacture in-situ testing stages as well as innovative accessories for SEM and TEM including SEM detectors, stages, stage automation and Peltier heating & cooling stages.



<http://deben.co.uk/products/>

### DIATOME U.S.

Tel: 215-412-8390  
Email: sgkcck@aol.com  
www.emsdiasum.com



#### Cryo Immuno

**APPLICATIONS:** The first cryo knife with a diamond platform, guarantees the best possible sectioning for sucrose infiltrated samples (Tokuyasu).

**FEATURES:** The diamond platform guarantees an easy and gentle section pick-up. The sections are collected directly from the diamond surface using a loop and a sucrose/methyl-cellulose droplet.

### EDAX, Inc.

Tel: (201) 529-4880  
Email: info.edax@ametec.com  
www.edax.com



#### Octane Elite EDS System

**APPLICATIONS:** Scanning Electron Microscopes (SEMs) • Transmission Electron Microscope (TEMs) • Energy Dispersive Spectroscopy (EDS) • Light Element Detection • Low kV Microanalysis

**FEATURES:** The system has the highest throughput and best resolution stability available. The SDDs include Silicon Nitride windows to improve low energy sensitivity, light element detection, and low kV microanalysis.

<http://www.edax.com/products/eds/octane-elite-eds-system.asp>

### Electron Microscopy Sciences

Tel: 215-412-8400  
E-mail: stacie@ems-secure.com  
www.emsdiasum.com



#### EMS-002 Cryo Workstation

The EMS-002 Cryo Workstation is a complete ultra rapid freezing system that captures rapid events and labile structures that are not seen in chemically fixed materials.

### Excelitas Technologies

Tel: 1 800 668 8752  
Email: X-Cite@excelitas.com  
www.excelitas.com



#### X-Cite® Fluorescence Illumination Solutions

**APPLICATIONS:** Digital Pathology or Virtual Microscopy • Fluorescence in Situ Hybridization (FISH) • Fluorescence Resonance Energy Transfer (FRET) • Live Cell Imaging • Optogenetics and Photoactivation

**FEATURES:** X-Cite offers innovative and reliable fluorescence illumination solutions for researchers and OEM integrators, with high power, control and stability required for their applications.



[www.excelitas.com/x-cite](http://www.excelitas.com/x-cite)

### Excelitas Technologies (cont.)

#### Optem Micro-Inspection Lens Systems



**APPLICATIONS:** Machine vision • Variable magnification imaging • Non-contact optical dimensional metrology • OEM integrated microscopy • Automated Optical Inspection

**FEATURES:** Optem Lenses feature interchangeable Mounting, Camera Tube, Optomechanical Function and Lower Magnification modules to enable users to configure their exact form, function and performance requirements.

<http://www.qioptiq.com/optem-micro-inspection-lenses.html>

#### Qioptiq mag.x System 125



**APPLICATIONS:** Technical microscopy • Flat-panel display inspection • Semiconductor inspection & processing • Widefield biomedical imaging • Micro measurement & metrology • Scientific R&D

**FEATURES:** Ideal for micro-inspection with large-sensors, Mag.x 125 combines precision engineering with innovative optical design to deliver exceptional resolution across broad fields-of-view (up to 12.5mm Ø).

<http://www.qioptiq.com/mag-x-125>

#### iFLEX Diode Lasers



**APPLICATIONS:** Confocal microscopy • Optogenetics • Flow cytometry • Test & measurement • Biomedical imaging & instrumentation

**FEATURES:** iFLEX Lasers deliver exceptional power stability with low amplitude noise. kineFLEX™ fiber delivery options ensure stable intensity with sub-micron positional accuracy and streamlined system integration.

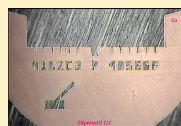
<http://www.qioptiq.com/diode-lasers.html>

### EXpressLO LLC

Tel: +1-321-663-3806  
Email: info@EXpressLO.com  
www.EXpressLO.com



#### EXpressLO Manipulation System



**APPLICATIONS:** *ex situ* lift out • FIB/PFIB specimen preparation • micromanipulation • backside specimen preparation • particles/fiber/thin films specimen preparation

**FEATURES:** EXpressLO™ grids and methods allow fast, easy, and flexible manipulation of FIB lift out specimens, fibers, particles, thin films, CNTs, and more.

[www.EXpressLO.com](http://www.EXpressLO.com)

### Hamamatsu Corporation



Tel: 908-231-0960  
Email: usa@hamamatsu.com  
www.hamamatsu.com

#### ORCA-Flash4.0 V3 sCMOS camera



**APPLICATIONS:** • Lightsheet microscopy • Super-resolution microscopy • 3D (4D) image sequence acquisition • Spinning disc confocal microscopy • FRET, multi-color single molecule imaging

**FEATURES:** Cooled scientific CMOS camera with 4 megapixels, 6.5 x 6.5 μm pixel size, Camera Link and USB 3.0 interfaces, fast frame rates, and more features.

<http://www.hamamatsu.com/us/en/product/category/5000/5005/C13440-20CU/index.html>

### Hysitron, Inc.

Tel: +1 952-835-6366  
Email: rstromberg@hysitron.com  
www.hysitron.com



#### PI 88 SEM PicoIndenter®



**APPLICATIONS:** Nanoindentation • Compression, Tension, Bending, and Fatigue Modes • EBSD Correlation to Mechanical Properties • Tip & Sample Heating up to 800°C • nano- to micro- in-situ testing solutions

**FEATURES:** Hysitron's PI 88 SEM PicoIndenter is a compact, versatile nanomechanical test instrument for use in SEM, ESEM, FIB, and ambient conditions.

<https://www.hysitron.com/SEM>

#### PI 95 TEM PicoIndenter®



**APPLICATIONS:** • Nanoindentation and Compression • Tensile Testing of Nanowires & Thin Films • nanoScratch • Fatigue • Electrical & Heating Options

**FEATURES:** Hysitron's PI 95 TEM PicoIndenter interfaces with major TEM models for performing quantitative compression, tension, bending, scratch, and fatigue testing with real-time TEM observation.

<https://www.hysitron.com/TEM>

### ibss Group, Inc.

Tel: +1-650-513-1488  
Email: admin@ibssgroup.com  
www.ibssgroup.com



#### Mobile Cubic Asher (MCA)



**APPLICATIONS:** • In-Situ Contamination Control • Ex-Situ Sample Cleaning & Storage • SEM/FIB/TEM • SIMS/XPS/Review SEM • Semiconductor

**FEATURES:** Mobile DS plasma cleaning center for ex-situ specimen & in-situ EM cleaning, employs ibss signature GV10x QS Source fitted into one convenient enclosure with choice of cleaning gas mixtures.

<http://ibssgroup.com/products/mca/>

### International Centre for Diffraction Data

Tel: 610-325-9814  
Email: Marketing@icdd.com  
www.icdd.com



#### PDF-4+ 2016



**APPLICATIONS:** Courses/Workshops • Databases • Journals • Materials Characterization • Phase Identification

**FEATURES:** PDF-4+ 2016 is a comprehensive collection of inorganic materials containing 365,877 entries, produced in a standardized format that can be rapidly searched for unknown phase identification.

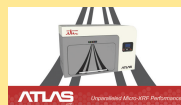
<http://www.icdd.com/products/2016SalesCatalog.pdf>

### IXRF Systems, Inc

Tel: 512-386-6100  
Email: sales@ixrf.com  
www.ixrf.com



#### ATLAS



**APPLICATIONS:** Comprehensive software suite • Multipoint/Multi-Area Automation • Complete Customization Control of Automation • Larger Chamber Volume • SDD Detector Active Area up to 150mm<sup>2</sup>, 50kv/50 watt tube, Spot Size down to 5 microns with anti-halo optics

**FEATURES:** ATLAS introduces a new world of x-ray mapping and automation. ATLAS boasts the largest chamber volume and SDD detection area, and smallest spot size available on the market.

<http://ixrf.com/xrf-products/micro-xrf-h>

#### Iridium Ultra EDS

**APPLICATIONS:** EDS Micro-analysis for the SEM • Silicon Drift Detectors • SEM-XRF • Automated Stages • Analyzer Upgrades • Free Software Updates

**FEATURES:** iXRF Systems provides comprehensive X-Ray microanalysis solutions from software/hardware upgrades to new packaged systems complete with large area detectors and is the leader in SEM-XRF.

<http://ixrf.com/xrf-products/microanalysis-iridium-ultra.html>

### JENOPTIK Optical Systems GmbH

Tel: +49 3641 65-2143  
Email: progres@jenoptik.com  
www.jenoptik.com/progres-gryphax



#### PROGRES GRYPHAX® SERIES Microscope Cameras



**APPLICATIONS:** Life science • Material science • Quality Control • Forensics

**FEATURES:** Sensitive & high-resolution microscope cameras from Jenoptik refine every microscope to a modern digital microscope workstation, suitable for all microscope brands, high image quality from 2, 5, 8 up to 20 MPix, 30 fps at the highest resolution, stability of USB 3.0 interface, 2/3" and 1" sensor, 10 - 12 bit, including userfriendly and intuitive free of charge camera software.

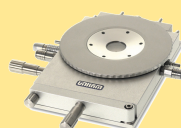
[www.jenoptik.com/progres-gryphax](http://www.jenoptik.com/progres-gryphax)

### Linkam Scientific Instruments

Tel: +44 (0) 1737 363476  
Email: Duncanstacey@linkam.co.uk  
www.linkam.co.uk



#### THMS600 Heating/Cooling stage



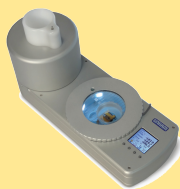
**APPLICATIONS:** • -196°C to 600°C temperature range with liquid nitrogen • Heating rate to 150°C/min; cooling rate to 100°C/min • Better than 0.1°C accuracy and stability • Options for gas control, humidity, pressure, vacuum and electrical measurements • Mounts to enable vertical operation in IR or X-ray spectrometers

**FEATURES:** The most versatile heating and cooling stage available. Precise temperature control. Ideal for use with light microscopy, FT-IR, UV, Raman, X-ray, SAXS and Synchrotron.

<http://www.linkam.co.uk/thms600-features/>



### CMS196M Cryo CLEM stage



**APPLICATIONS:** Self-contained cryo correlative system keeping the sample vitrified at constant  $-196^{\circ}\text{C}$  and avoiding contamination, automated liquid nitrogen refilling • High precision encoded motorized XY with high speed automated mapping • Short start up time with high long-term stability and low drift • Self-aligning magnetic sample cassette system for up to three samples • Integrated condenser optics for transmitted light - brightfield and phase contrast as well as Fluorescence observation with high resolution objectives with NA of up to 0.9

**FEATURES:** The Linkam Cryo-CLEM stage allows vitrified samples to be imaged in brightfield and fluorescence without contamination. Grids can be mapped to provide correlative information.

<http://www.linkam.co.uk/clem>

### RH95 Humidity Generator



**APPLICATIONS:** Fully self-contained humidity control from 10% to 90%RH. No dry air supply required • Highly stable  $\pm 0.5\%$ . Ideal for long term material testing • Compatible with a range of Linkam stages and other sealed chambers up to two liters • Monitor the effects of environmental changes on a wide variety of materials • Optional calibration kit including chamber and salt ampoules

**FEATURES:** The RH95 Humidity Generator provides precise control of RH% for a range of Linkam stages, ideal for sample characterization under changing environmental conditions.

<http://www.linkam.co.uk/humidity-controller/>

### Optical DSC450 Stage



**APPLICATIONS:** •  $-196^{\circ}\text{C}$  to  $450^{\circ}\text{C}$  temperature range with liquid nitrogen • Heating and cooling rates from  $0.1^{\circ}\text{C}/\text{min}$  to  $30^{\circ}\text{C}/\text{min}$  • Ideal for measuring glass transitions and melting peaks • Optimized for high quality image capture and recording • Highly sensitive at low heating rates and small sample sizes

**FEATURES:** The Optical DSC450 system has been optimized for those wishing to measure transition temperatures and enthalpy changes of their samples.

<http://www.linkam.co.uk/dscdualpan>

## Meadowlark Optics

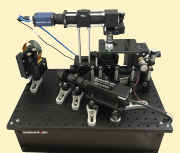


Tel: 303-833-4333

Email: [sales@meadowlark.com](mailto:sales@meadowlark.com)

[www.meadowlark.com](http://www.meadowlark.com)

### 1-Photon SLM Microscopy Kit



**APPLICATIONS:** Meadowlark Optics offers Spatial Light Modulators with response times 8x faster than competing technologies. Our Microscopy Kit is an ideal tool for any volumetric fluorescence studies such as calcium imaging and/or photoactivation used to monitor and manipulate up to 1500 neurons/second.

**FEATURES:** Multisite scan-less excitation • Epifluorescence microscope • High speed hologram generator and calibration software • Excite and monitor activity of neuronal ensembles

<http://www.meadowlark.com/photon-slm-microscopy-kit-p-138?mid=12#.WFhS-mwVGUK>

## Microtome Service Company



Tel: 315-451-1404

Email: [Mitch@MicrotomeServiceCo.com](mailto:Mitch@MicrotomeServiceCo.com)

<http://www.microtomeserviceco.com>



### Microtome Sales, Service and Parts

**APPLICATIONS:** • Sorvall Microtomes and Ultramicrotomes • Rotary Microtome Repair • KnifeMaker Repairs • AO 820 & AO 860 Repairs • Fabricate & Modify Lab Equipment

**FEATURES:** Sales & Service of Sorvall, RMC, AO:820, 860 and Rotary Microtomes and GKM Knife Makers. Microtome & Lab accessories, fabrication and modifications to meet your specific needs. Microtome Rentals.

[http://microtomeserviceco.com/index.php?route=information/information&information\\_id=7](http://microtomeserviceco.com/index.php?route=information/information&information_id=7)

## Minitool Inc.

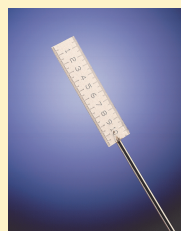


Tel: (408) 395-1585

Email: [rschaller@minitoolinc.com](mailto:rschaller@minitoolinc.com)

[www.minitoolinc.com](http://www.minitoolinc.com)

### Microtools and Instruments



**APPLICATIONS:** • Microscopy • Microbiology • Specimen Manipulation & Placement • Medical Research • Spectroscopy

**FEATURES:** Efficient, precise and realistically proportioned instruments in tip diameters from  $.025\text{mm}$  ( $.001''$ ) to  $1.0\text{mm}$  ( $.040''$ ) are ideal for microscopists. Our line of micro-tools includes needles, graters, chisels, knives, mirrors, probers, spatulas, hooks, scribes and microrulers. Also featured are micro-manipulators, micro-sharpeners and micro-forceps. Tools are offered singly or in sets of eight tools with one handle to 32 tools with six handles.

[www.minitoolinc.com](http://www.minitoolinc.com)

## MTI Instruments, Inc.

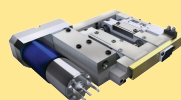


Tel: 1-800-342-2203

Email: [sales@mtiinstruments.com](mailto:sales@mtiinstruments.com)

[www.mtiinstruments.com](http://www.mtiinstruments.com)

### In-situ Tensile Stages



**APPLICATIONS:** • Microscope Stages • In-Situ SEM/AFM/SPM Accessories

**FEATURES:** Designed to fit inside SEM or under AFM, these vacuum compatible tensile stages can perform tensile, compression, bending and fatigue testing. Heating to  $900^{\circ}\text{C}$ . EBSD available.

<http://www.mtiinstruments.com/products?measurement=tensile-stage>



### Navitar

Tel: 585-359-4000  
 Email: info@navitar.com  
 navitar.com



#### High Quality Optical Solutions

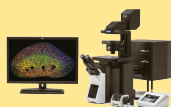
**APPLICATIONS:** Life Science • Industrial Imaging • Microscopy • Metrology • Defense & Security

**FEATURES:** Navitar's products range from high magnification motorized zoom imaging systems to fisheye projection lenses used in a wide variety of industries including Life Sciences, Industrial Imaging, Microscopy and Projection.

<https://navitar.com/products/imaging-optics/>

### Olympus Corporation of the Americas Scientific Solutions Group

Tel: 800-446-5967  
 www.olympus-lifescience.com



#### Olympus FLUOVIEW FV3000 and FV3000RS

**APPLICATIONS:** Confocal laser scanning microscope • Live cell imaging as fast as 438 fps with resonant scanner • Multichannel spectral imaging and unmixing • Macro-to-micro imaging from 1.25X to 150X • Olympus Super Resolution on up to 4 channels

**FEATURES:** The Olympus FLUOVIEW® FV3000 series confocal laser scanning microscope combines usability with high-performance imaging capabilities so researchers can collect advanced imaging data quickly and easily.

<http://www.olympus-lifescience.com/en/laser-scanning/fv3000/>

### Oregon Physics

Tel: 503-601-0041  
 Email: info@oregon-physics.com  
 www.oregon-physics.com



#### Hyperion II Dual Polarity Ion Source

**APPLICATIONS:** • Negative and positive ion extraction • Bolt-on to existing optical system • Utilize variety of gas species • Supports surface analysis (SIMS) applications • Supports high current micromachining (PFIB) applications

**FEATURES:** Integrates on existing ion optical systems to deliver the highest brightness, best imaging resolution and longest source lifetime for SIMS applications or high current FIB.

<http://www.oregon-physics.com/hyperion2.php>

#### FIB Consumable Parts

**APPLICATIONS:** For FEI FIB columns • Suppressors • Extractors • Custom aperture strips • Standard aperture strips

**FEATURES:** High quality FIB replacement parts for FEI Dual Beam and FIB systems at substantial cost savings. We offer fast delivery and discounts for large orders.

<http://www.oregon-physics.com/suppressors-extractors.php>



### PI (Physik Instrumente) LP

Tel: 508-832-3456  
 Email: info@pi-usa.us  
 www.pi-usa.us



#### Plnano® Nanopositioning Stage & Controller for Super-Resolution Microscopy

**APPLICATIONS:** Super Resolution Microscopy • Microscopy Stages • Atomic Force Microscopes (AFMs) • Positioning Stages & Controllers • Nanopositioners & Stages

**FEATURES:** 2nd Gen System • Two Versions: High Precision / High Precision and Stability • Cost-effective Piezoresistive Feedback Version Available • Extremely Fast Step & Settle, From 5msec • Low Profile: 20mm (0.8") • 200µm Travel Ranges

[www.pi-usa.us/microscopy](http://www.pi-usa.us/microscopy)

### Rigaku Corporation

Tel: 281-362-2300  
 Email: info@rigaku.com  
 www.rigaku.com



#### Rigaku nano3DX

**APPLICATIONS:** X-ray microscopy • computed tomography • XRM • CT • High Resolution

**FEATURES:** Nano3DX is an X-ray microscope (XRM) with the ability to measure relatively large samples at high resolution using a high powered rotating anode X-ray source and a CCD imager.

<http://www.rigaku.com/products/xrm/nano3dx>

#### Rigaku CT Lab GX series



**APPLICATIONS:** Ultra-high-speed CT scan and image reconstruction • High-resolution wide field-of-view measurement • Uses "Sample-Stationary Method" • Low running cost

**FEATURES:** CT Lab GX series, for ultra-high-speed, high-resolution 3D X-ray micro CT. Using the Sample-Stationary Method, devices can perform CT scans in 8 seconds at top speed, with a minimum resolution of 4.5 µm.

<http://www.rigaku.com/products/xrm/ctlab>

### SCHOTT North America, Inc. - Lighting and Imaging

Tel: +1-508-765-9744  
 Email: lightingimaging@us.schott.com  
 www.us.schott.com/lightingimaging



#### ColdVision Light Sources and Fiber Optic Light Guides



**APPLICATIONS:** Microscopy Illumination • Industrial Illumination • Light Sources • Ringlights • Lightguides

**FEATURES:** The ColdVision series provides an extensive offering of light sources, fiber optic light guides, and accessories designed to meet every illumination need for Microscopy illumination.

<http://www.us.schott.com/lightingimaging/english/microscopy/products/coldvision.html>

### SmarAct Inc

Tel: 415-766-9006  
Email: info-us@smaract.com  
www.smaract.com



#### Electron Microscopy Stage

**APPLICATIONS:** Microgrippers, micro- and nanomanipulators • Multi DOF, vacuum-compatible piezo stages • Probing and testing systems • PicoScale laser interferometer • Microscopy stages for optical and electron microscopy

**FEATURES:** SmarAct offers piezo-based high-performance micro- and nanopositioners, advanced control systems, complete miniaturized manipulation systems and compact custom positioning systems that have sub-nm resolution.



[http://www.smaract.com/SmarAct\\_Catalog\\_v16.pdf](http://www.smaract.com/SmarAct_Catalog_v16.pdf)

### Special Optics

Tel: 973-366-7289  
Email: info@specialoptics.com  
specialoptics.com



#### Custom Microscope Objectives

**APPLICATIONS:** Laser Micro-machining • Physical Science Research • Microscopy • Long Range Surveillance • Defense & Security

**FEATURES:** Special Optics designs, develops and manufactures precision optical components and offers a wide range of optical fabrication and opto-mechanical assembly capabilities.



<http://specialoptics.com/custom-solutions/>

### SPI Supplies

Tel: 610-436-5400  
Email: sales@2spi.com  
www.2spi.com



#### UV Prep

**APPLICATIONS:** Materials Science • Life Science • Semiconductor • Low Voltage Imaging • Failure Analysis

**FEATURES:** The UV Prep is designed to remove hydrocarbon contamination from a sample surface prior to FE-SEM examination. The result is enhanced imaging and resolution at low accelerating voltages.



#### Plasma Prep™ III

**APPLICATIONS:** Materials Science • Life Science • Semiconductor • Asbestos • Failure Analysis

**FEATURES:** Solid state RF generator capable of 1 to 100W operations; Low Temperature asher/etcher; small footprint; 4" diameter x 6" depth Pyrex or Quartz Chamber; Optional Process Controller; Optional system for cleaning TEM Specimen Holders.



### Wet Cell II

**APPLICATIONS:** Materials Science • Life Science • Microfluidic Analytical Techniques • Self-contained Interface • Vacuum Compatible

**FEATURES:** The next generation device for the examination of liquids in SEM/EDS and TOF-SIMS instruments. The self-contained high vacuum compatible device enables the analyst to characterize a fluid in its natural state.



### Spicer Consulting Limited

Tel: +44(0)1234 765773  
Email: ho@spicerconsulting.com  
<http://www.spicerconsulting.com/>



#### SC24 Magnetic Field Cancelling System

**APPLICATIONS:** • TEM • SEM • FIB • DualBeam • CDSEM

**FEATURES:** • Makes the ambient magnetic field "OK" for the electron microscope • Adapts to field changes within 100  $\mu$ s • Touch screen intelligent user interface with automatic setup

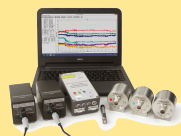


<http://www.spicerconsulting.com/sc24-product-guide.pdf>

#### SC11 Auto Survey System

**APPLICATIONS:** • TEM • SEM • FIB • DualBeam • CDSEM

**FEATURES:** • Automated site surveys for SEM and TEM installations • Measures magnetic field at 2 heights, floor vibration in 3 axes and acoustic levels



<http://www.spicerconsulting.com/sc11-auto-product-guide.pdf>

### Sutter Instrument

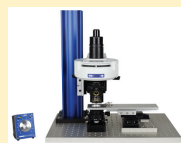
Tel: 415-883-0128  
Email: info@sutter.com  
www.sutter.com



#### BOB - Open-Design Upright Microscope

**APPLICATIONS:** Fluorescence microscopy • In vivo microscopy • Life Sciences • Photostimulation

**FEATURES:** The BOB is a small, simple microscope designed to allow a single experimental setup to be used for both *in vivo* and *in vitro* experimentation.



<http://sutter.com/MICROSCOPES/bob.html>

### Ted Pella, Inc.

Tel: 800-237-3526  
Email: sales@tedpella.com  
www.tedpella.com



#### High Resolution FE-SEM Sputter and Carbon Coaters

**APPLICATIONS:** • Life Sciences • Materials Science • Semiconductors • SEM

**FEATURES:** • Grain-free, ultra-thin uniform and conformal coating • Wide choice of operating parameters to accommodate all sample types • Purpose designed with optimized vacuum pumping system • Rotary-Planetary-Tilting stage and high resolution thickness controller • Easy to operate with fast cycle times



[www.tedpella.com/cressington.htm](http://www.tedpella.com/cressington.htm)



### NEW PELCO BioWave® Pro+

**APPLICATIONS:** • Microwave Tissue Processing for EM • Light Microscopy • Immunolabeling and Decalcification

**FEATURES:** User-friendly run screens with live run-time graph • Simplified protocol selection • Report Protocol Manager App and two USB ports for simplified data transfer and custom protocol upload

[http://www.tedpella.com/microwave\\_html/PELCO-BioWave-Pro-Plus-Microwave-System.htm](http://www.tedpella.com/microwave_html/PELCO-BioWave-Pro-Plus-Microwave-System.htm)

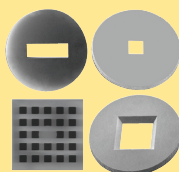


### PELCO easiGlow™

**APPLICATIONS:** • Life Sciences • Materials Science • TEM • Tomography

**FEATURES:** Precise and easy vacuum settings • Short cycle times • Consistent results • Intuitive touch screen for control and display • Supports hydrophilic/hydrophobic and negative/positive modes

[www.tedpella.com/easiGlow.htm](http://www.tedpella.com/easiGlow.htm)



### PELCO® Silicon Nitride Support Films and TEM Supplies

**APPLICATIONS:** • TEM • STEM • Thin Film Research • Life Sciences • Materials Science

**FEATURES:** Holey SiN films down to 100nm • Solid membrane thickness of 8, 15, 35, 50 and 200nm • 3mm diameter frame fits standard TEM holders • EasyGrip™ edges for improved handling • Variety of window shapes and sizes

[www.tedpella.com/TEM-supplies.htm](http://www.tedpella.com/TEM-supplies.htm)



### PELCO® Modular SEM/FIB Sample Holders and Supplies

**APPLICATIONS:** • SEM • FE-SEM • FIB • FIB/SEM • CLEM

**FEATURES:** Stage adapters for all major SEM brands • Large selection of effective and practical sample holders • Correlative microscopy sample holders • Conductive adhesives • Carbon tabs • Conductive tape

[www.tedpella.com/SEM-supplies.htm](http://www.tedpella.com/SEM-supplies.htm)

## Ushio America, Inc.

Tel: 800.838.7446

Email: [customerservice@ushio.com](mailto:customerservice@ushio.com)

[www.ushio.com](http://www.ushio.com)



### MIDORI™ ULB-35 FIBER-OPTIC LED LIGHT SOURCE



**APPLICATIONS:** • Industrial NDT Inspection • Borescopy • Microscopy • Remote Visual Inspection • Fiberscopes

**FEATURES:** Midori ULB-35i LED illuminator is ideal for specialty lighting applications that require flexibility in guiding light to perform specific lighting tasks with miniscule light source.

[www.ushio.com/products/scientific-medical/](http://www.ushio.com/products/scientific-medical/)



### MERCURY SHORT-ARC LAMP (USH-103D)

**APPLICATIONS:** • Microscopes • Analytical Equipments • Lab Equipment • UV Applications • Diagnostic Equipment

**FEATURES:** Ushio America, a respected leader in specialty lighting, brings you the latest advancement in lamp technology—our extended life 100W short-arc mercury lamp.

[www.ushio.com/products/scientific-medical/](http://www.ushio.com/products/scientific-medical/)



### PICOEXPLORER™ PAS-110, PHOTO ABSORBANCE SENSOR

**APPLICATIONS:** • Laboratory Research

**FEATURES:** USHIO PICOEXPLORER™ PAS-110 is a handheld, compact lab research device that conducts your experiment in seconds in just 3 EASY steps. Visit [www.ushio.com](http://www.ushio.com) for details.

[www.ushio.com/products/scientific-medical/](http://www.ushio.com/products/scientific-medical/)



If you are interested in attending or sponsoring an ImmunoGold/Silver Staining Workshop please give us a call and ask for Stacie Kirsch.

## Reactions of Participants:

*"We are very enthusiastic and will most certainly pursue this method!"*

*"The time for personal advice was excellent!"*

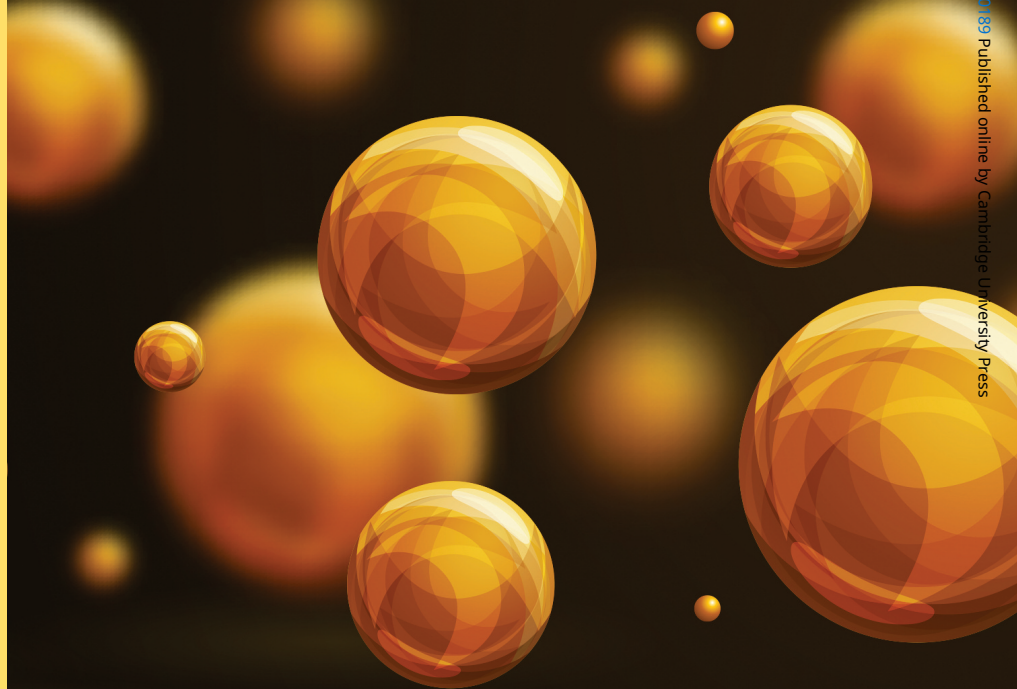
*"An abundance of practical info, built on the necessary theoretical background!"*



Electron Microscopy Sciences is the exclusive distributor of Aurion products in the United States.

# clear, clean, reproducible, and reliable results

## AURION Immuno Gold/Silver Staining



## ...EMS has it!

CONTACT US FOR MORE INFORMATION...

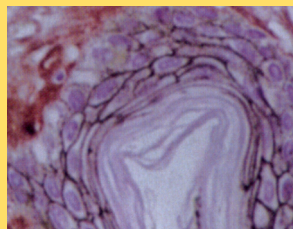
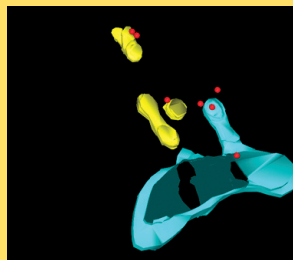
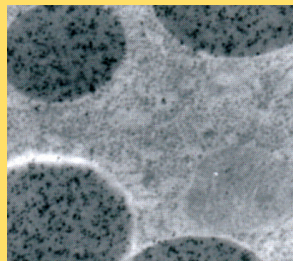
### Electron Microscopy Sciences

P.O. Box 550 • 1560 Industry Rd.  
Hatfield, Pa 19440  
Tel: (215) 412-8400 • Fax: (215) 412-8450  
email: [sgkcck@aol.com](mailto:sgkcck@aol.com)  
or [stacie@ems-secure.com](mailto:stacie@ems-secure.com)

OUR MAIN INTERACTIVE WEBSITE:  
[www.emsdiasum.com](http://www.emsdiasum.com)

 TO REQUEST A COPY  
OF OUR CATALOG:  
[www.emsdiasum.com/  
requests/catalog](http://www.emsdiasum.com/requests/catalog)

 TO VIEW OUR  
DIGITAL CATALOG:  
[catalog.emsdiasum.com](http://catalog.emsdiasum.com)



Here at Electron Microscopy Sciences we are very proud to be the exclusive agents of Aurion, the leading manufacturer and developer of a complete line of ImmunoGold Reagents and Accessories in the Netherlands. Aurion is led by the renowned Dr. Jan Leunissen, whom many of you may know through his books that he has written on ImmunoGold labeling as well as the workshops he teaches throughout the world.

Over the years the Aurion line has grown and has been further enhanced to include many unique and exclusive products not available elsewhere. Today their line includes not only the more commonly known reagents for EM and LM but, as well, a newly introduced line of products such as Silver Enhancement specifically for EM, Ultra-Small Fab fragments, Blocking Solutions, and even a line of donkey gold conjugates.

With all of the new additions to the line up Aurion and EMS have something for everyone in the ImmunoGold Field.

