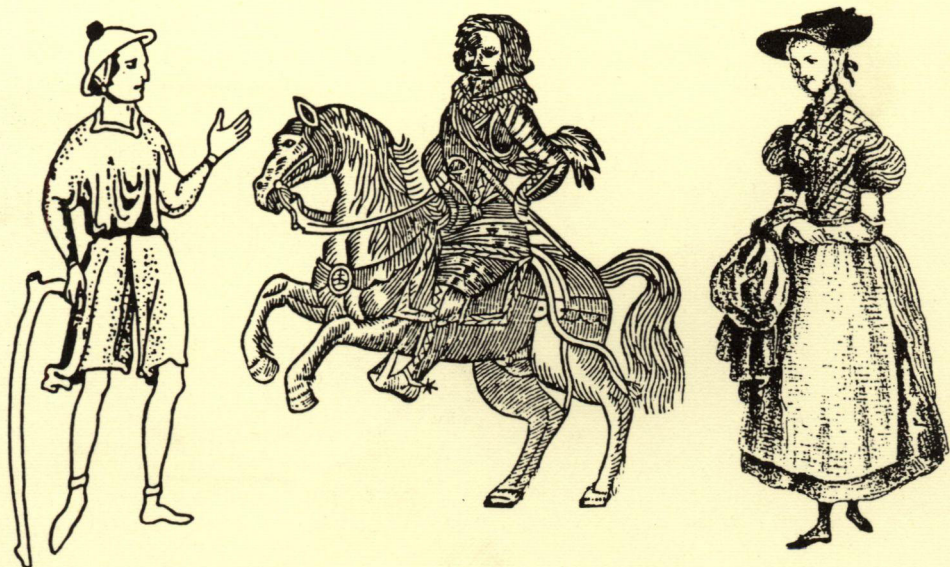


CONTINUITY AND CHANGE

A JOURNAL OF SOCIAL STRUCTURE,
LAW AND DEMOGRAPHY
IN PAST SOCIETIES

VOLUME 2 PART 3
DECEMBER 1987



CONTINUITY AND CHANGE

A journal of social structure, law and demography in past societies.

EDITORS

LOYD BONFIELD, Tulane University Law School, Joseph Merrick Jones Hall, New Orleans, Louisiana 70118, USA

RICHARD WALL, ESRC Cambridge Group for the History of Population and Social Structure, 27 Trumpington Street, Cambridge CB2 1QA, UK

ASSOCIATE EDITORS

ROBERT LEE, Dept of Economic History, University of Liverpool, Liverpool L69 3BX, UK

L. R. POOS, Dept of History, Catholic University of America, Washington DC 20064, USA

EDITORIAL BOARD

M. ANDERSON, University of Edinburgh

R. ANDORKA, Budapest

L. ASSIER-ANDRIEU, CNRS, Toulouse

B. BAILYN, Harvard University

C. DONAHUE, Harvard Law School

J. EHMER, Institut für Wirtschafts und Sozialgeschichte, Vienna

D. GAUNT, Umeå University

T. HAREVEN, Clark University

A. HAYAMI, Keio University, Tokyo

E. HELIN, University of Liège

A. E. IMHOF, Freie Universität, Berlin

S. KATZ, Princeton University

B. LASLETT, University of Minnesota

P. LASLETT, Cambridge Group

H. MEDICK, Max-Planck Institute, Göttingen

J. PETERS, Akademie der Wissenschaften der DDR, Berlin

C. PONI, University of Bologna

D. REHER, Universidad Complutense de Madrid

R. S. SCHOFIELD, Cambridge Group

M. SEGALEN, Centre d'Ethnologie Française, Paris

M. SHEEHAN, Pontifical Institute, Toronto

D. S. SMITH, University of Illinois at Chicago

P. THOMPSON, University of Essex

L. TILLY, New School for Social Research, New York

K. WRIGHTSON, Jesus College, Cambridge

E. A. WRIGLEY, London School of Economics

This journal aims to define a field of historical sociology concerned with long-term continuities and discontinuities in the structures of past societies. Emphasis will be upon studies whose agenda or methodology combines elements from traditional fields such as history, sociology, law, demography, economics or anthropology, or ranges freely between them. There will be a strong commitment to comparative studies over a broad range of cultures and time spans.

By providing a balance between quantitative and qualitative data from the contributing disciplines, *Continuity and Change* hopes to promote greater dialogue and discussion among researchers and to make their work accessible to a wider audience. Contributions will include articles and selected book reviews.

Cambridge University Press express grateful thanks to Tulane Law School for financial support for *Continuity and Change*.

SUBSCRIPTIONS

Continuity and Change (ISSN 0268-4160) is published in volumes of three parts. The subscription price (which includes postage) of volume 2, 1987, is £30 (US \$55) for institutions, £15 (US \$29) for individuals ordering direct from the Press and certifying that the journal is for their personal use. Single parts cost £11 (US \$20) plus postage. US dollar prices apply to USA and Canada. Orders, which must be accompanied by payment, may be sent to a bookseller, subscription agent or direct to the publishers: Cambridge University Press, The Edinburgh Building, Shaftesbury Road, Cambridge CB2 2RU, UK. Orders from the USA and Canada should be sent to Cambridge University Press, 32 East 57th Street, New York, NY 10022, USA. Copies of the journal for subscribers in USA and Canada are sent by air to New York to arrive with minimum delay.