

# Cardiology in the Young

*Cardiology in the Young*  
44<sup>th</sup> Annual Meeting of the Association for  
European Paediatric Cardiology, AEPC  
with joint sessions  
with the Japanese Society of Pediatric Cardiology  
and Cardiac Surgery  
Innsbruck, Austria May 26–29, 2010



**Supplement Editor:**  
Univ.Prof.Dr. Jörg Ingolf Stein  
Universitätsklinik für Pädiatrie III  
Medizinische Universität Innsbruck  
Austria

Submit your paper online  
<http://mc.manuscriptcentral.com/cty>

**CAMBRIDGE**  
UNIVERSITY PRESS



# Cardiology in the Young

journals.cambridge.org/CTY

## Editor-in-Chief

Dr Edward J. Baker

Department of Congenital Heart Disease, Evelina Children's Hospital,  
Guy's & St. Thomas' Hospital NHS Trust, Lambeth Palace Road, London, SE1 7EH, UK

## Emeritus Founding Editor

Professor Robert H. Anderson

Cardiac Unit, Institute of Child Health, University College London,  
30 Guilford Street, London WC1N 1EH, UK

## International Editors

G. William Henry, Chapel Hill, NC  
Hiromi Kurosawa, Tokyo

Supplements Editor      Gil Wernovsky, Philadelphia, PA

Images Editor              Roxane McKay, Memphis, TN

## Founding Editors

Anton E. Becker, Amsterdam; Giancarlo Crupi, Bergamo; Arthur Garson Jr,  
Charlottesville, VA; Fernando Lucchese, Porto Alegre; Lucio Parenzan,  
Bergamo; the late Atsuyoshi Takao, Tokyo; Michael Tynan, London

## International Editorial Board

Lindsey D. Allan (London)  
Maurice Beghetti (Geneva)  
Lee N. Benson (Toronto)  
Per G. Bjørnstad (Oslo)  
Anthony C. Chang (Orange, CA)  
Tjark Ebels (Groningen)  
Timothy Feltes (Columbus, OH)  
J. William Gaynor (Philadelphia, PA)  
Allan Goldman (London)  
Willem A. Helbing (Rotterdam)  
John Hess (Munich)  
Jeffrey P. Jacobs (St Petersburg, FL)  
Eero Jokinen (Helsinki)  
Tom Karl (Brisbane)  
Doff B. McElhinney (Boston, MA)

Luc Mertens (Leuven)  
Cleonice de C. Mota (Belo Horizonte)  
Jane Newburger (Boston, MA)  
Edgardo E. Ortiz (Quezon City)  
Daniel Penny (Melbourne)  
Andrew N. Redington (Toronto)  
Girish S. Shirali (Charleston, SC)  
Norman H. Silverman (Palo Alto, CA)  
Giovanni Stellin (Padova)  
András Szatmári (Budapest)  
Hideki Uemura (London)  
Steven A. Webber (Pittsburgh, PA)  
James L. Wilkinson (Melbourne)  
Shi-Joon Yoo (Toronto)

*Cardiology in the Young* is indexed and abstracted in Index Medicus/MEDLINE; Current Contents/Clinical Medicine; Research Alert; Sci Search; EMBASE/Excerpta Medica

Commissioning Editor: Dan Edwards  
Production Editor: Nicki Marshall

Design and Production: Macmillan India Limited, Bangalore  
Printed & Bound: Latimer Trend, Plymouth

Published by Cambridge University Press (Journals), Edinburgh Building, Shaftesbury Road, Cambridge CB2 8RU, UK  
Tel: +44 (0)1223 326491; Fax: +44 (0)1223 325802; E-mail: dedwards@cambridge.org

**Cambridge Journals Online**  
For further information about this journal  
please go to the journal website at:  
[journals.cambridge.org/CTY](http://journals.cambridge.org/CTY)



**Mixed Sources**  
Product group from well-managed  
forests and other controlled sources  
[www.fsc.org](http://www.fsc.org) Cert no. SGS-COC-005493  
© 1996 Forest Stewardship Council

**CAMBRIDGE**  
UNIVERSITY PRESS

# The Organising Committee

## Scientific Committee (AEPIC Council)

President: André Bozio (Lyon, FR)  
President Elect: Shakeel Qureshi (London UK)  
Secretary General: Eero Jokinen (Helsinki FI)  
Scientific Secretary: Joseph de Giovanni (Birmingham UK)  
Treasurer: Jörg-Ingolf Stein (Innsbruck AT)  
Councillor: Bohdan Maruszewski (Warsaw PL)  
Councillor: Konrad Brockmeier (Köln DE)  
Councillor: Katharina Hanseus (Lund SE)  
Junior Councillor: Georgia Brugada (Paris FR)

## Local Organising Committee

Jörg-Ingolf Stein  
Daniela Baumgartner  
Ralf Geiger  
Ulrich Schweigmann  
Universitätsklinik für Pädiatrie III  
Medizinische Universität Innsbruck Austria

## Japanese Society of Pediatric Cardiology and Cardiac Surgery

President: Toshio Nakanishi  
Vice President: Hideaki Kado  
Secretary General: Ben Saji  
Scientific Committee Chair: Shunichi Ogawa  
Int. Communication: Koichiro Niwa  
Treasurer: Kisaburo Sakamoto  
and  
Past president: Makoto Nakazawa

## Congress Secretariat

Opening hours

Wednesday	26.05.2010	07:30–18:30
Thursday	27.05.2010	07:30–18:30
Friday	28.05.2010	07:30–18:30
Saturday	29.05.2010	08:00–14:00

## pco tyrol congress

Rennweg 3, A-6020 Innsbruck  
Tel.: +43 512 575600  
Fax.: +43 512 575607  
email: [aepc2010@come-innsbruck.at](mailto:aepc2010@come-innsbruck.at)  
[www.pco-tyrolcongress.at](http://www.pco-tyrolcongress.at)  
[www.aepc2010.at](http://www.aepc2010.at)

## Venue

Congress Innsbruck  
Rennweg 3, A-6020 Innsbruck  
[www.come-innsbruck.at](http://www.come-innsbruck.at)

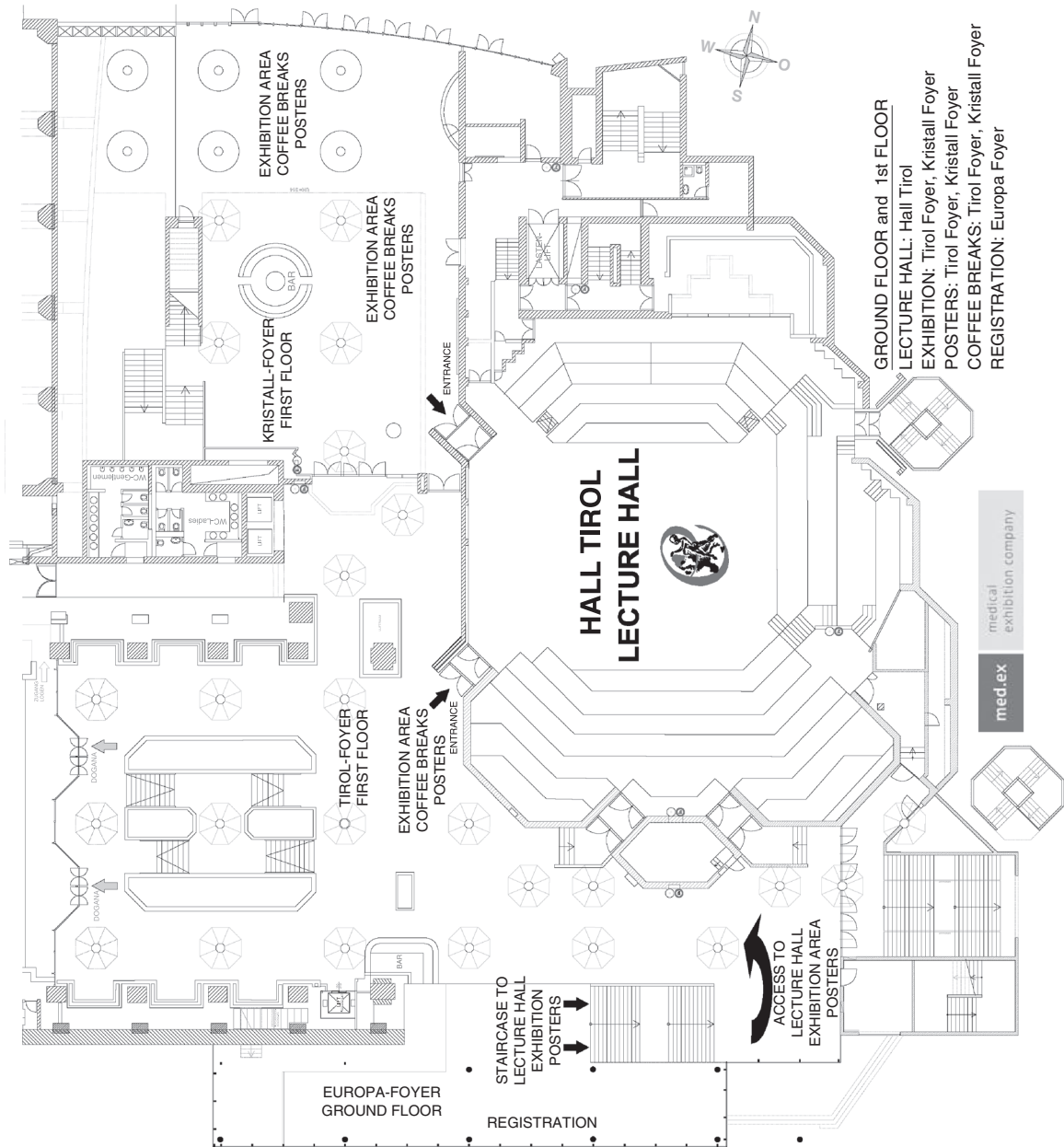
## Medical exhibition

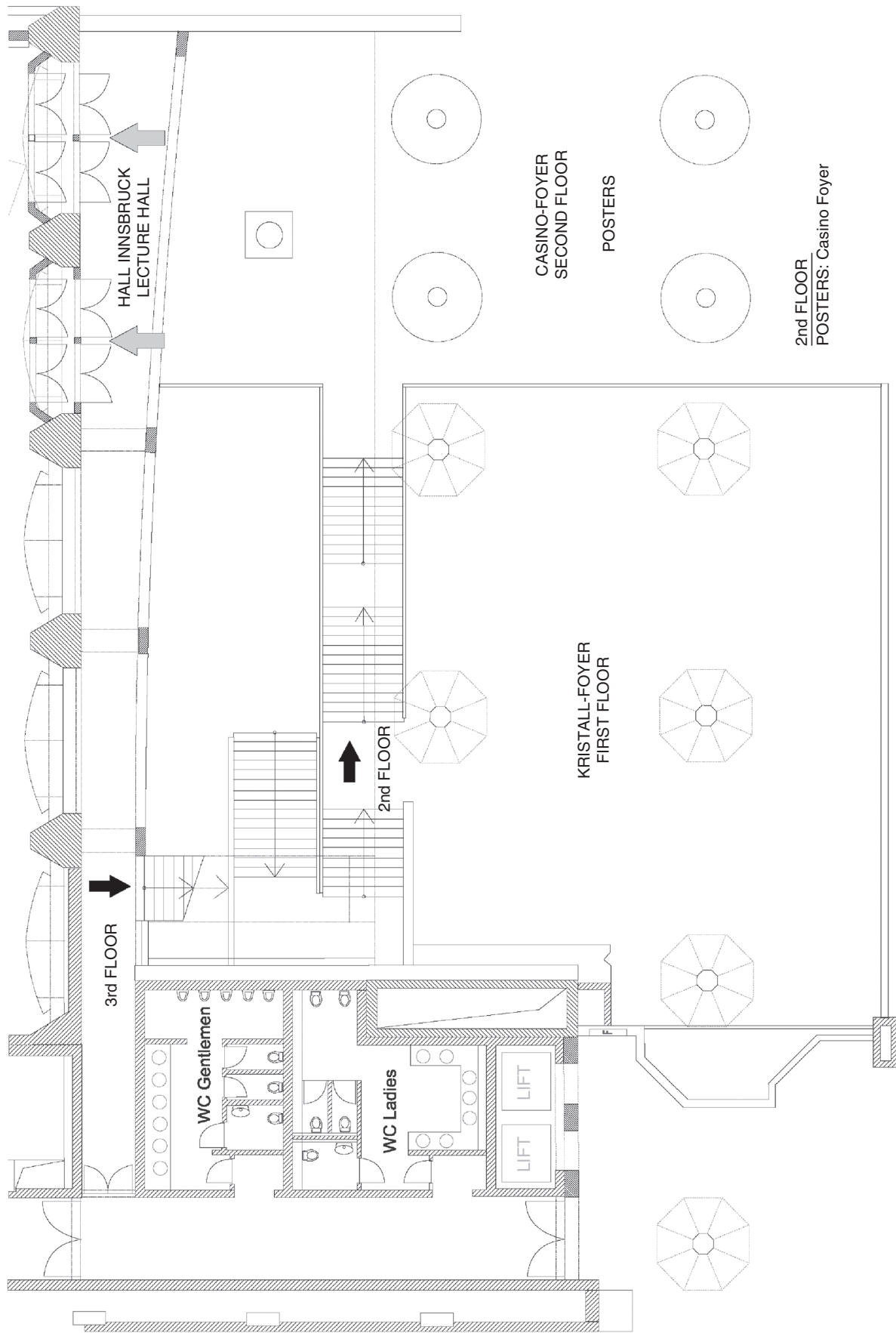
med.ex – Medizinische Ausstellungsgesellschaft m.b.H.  
Klaus Ehrenmüller  
Rennweg 3, A-6020 Innsbruck  
Tel.: +43 512 5936-186  
Fax.: +43 512 5936-189  
[klaus@medex.co.at](mailto:klaus@medex.co.at)  
[www.medex.co.at](http://www.medex.co.at)

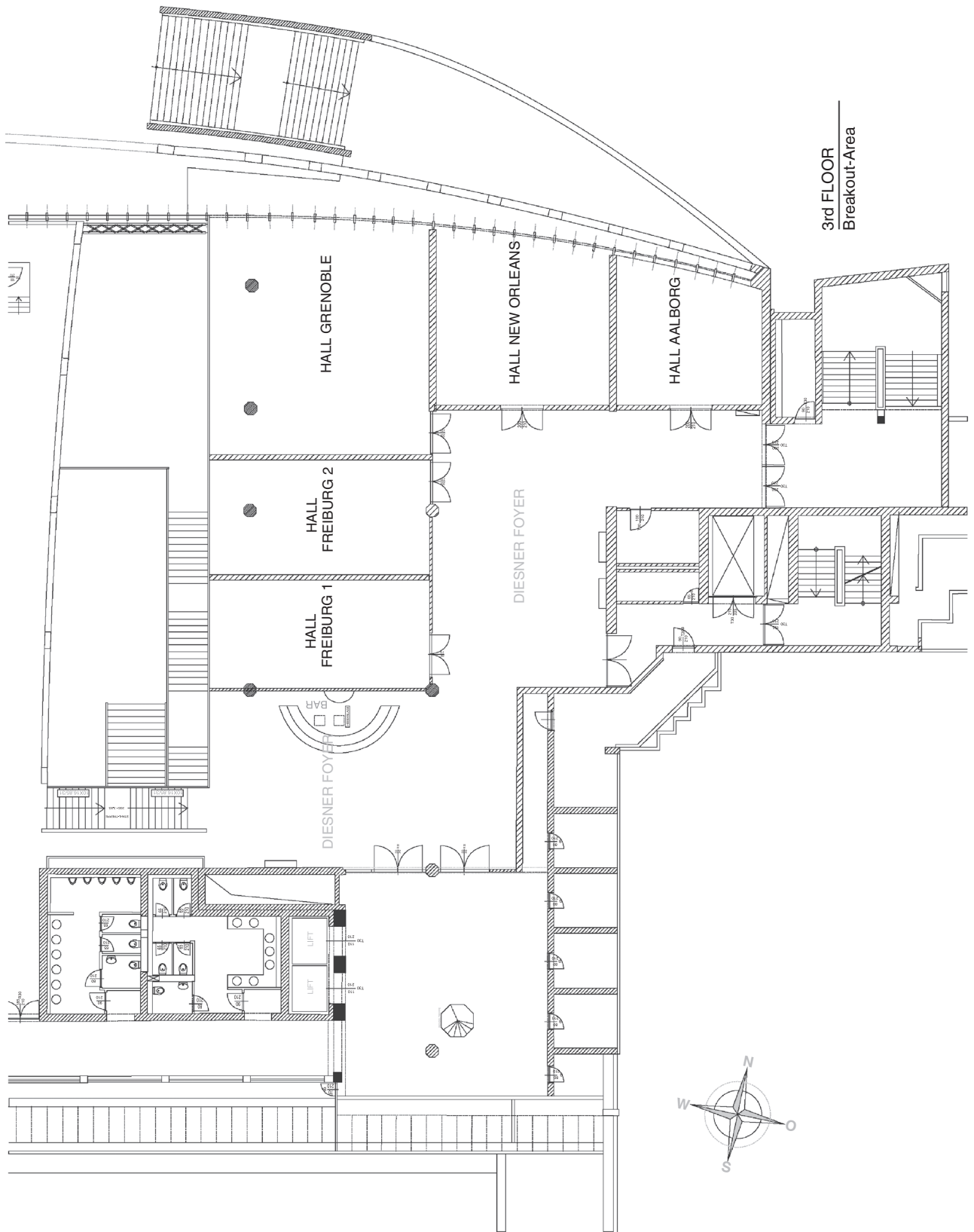
## **Sponsors and Exhibitors:**

The AEPC would like to give special thanks to all Sponsors and Exhibitors of the 44th Annual Meeting.

Abbott GesmbH  
Actelion Pharmaceuticals LTD  
Actiopharm GmbH  
AGA Medical Corporation  
Amomed Pharma GmbH  
Berlin Heart/ Biomedica  
Cordis  
GE Healthcare  
Hauser Medizintechnik  
Hipp  
Intervent Handels GmbH  
Mac's Medical  
Medtronic  
Milupa  
Multiplate  
Nestlé  
Novomed Handels-GesmbH  
NuMed Inc.  
Osypka  
Pfizer Corporation Austria GmbH  
Philips Medical Systems/ Philips Cardiovascular Ultrasound  
Siemens AG  
St. Jude Medical  
Swissimplant AG  
Tom Tec Imaging Systems GmbH  
Werfen Austria GmbH  
W.L. Gore  
Zenacor Medical Systems







3rd FLOOR  
Breakout-Area



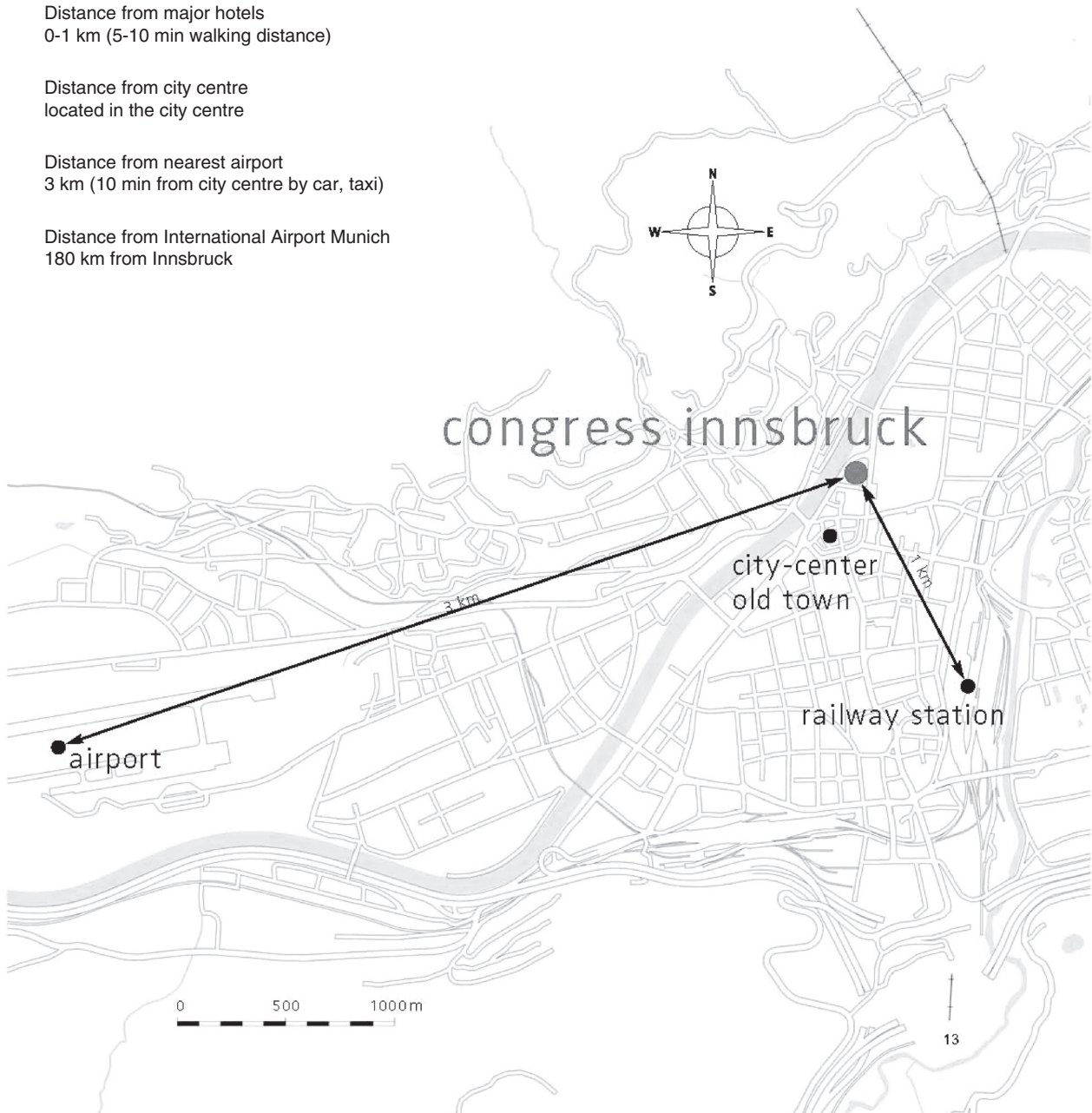


Distance from major hotels  
0-1 km (5-10 min walking distance)

Distance from city centre  
located in the city centre

Distance from nearest airport  
3 km (10 min from city centre by car, taxi)

Distance from International Airport Munich  
180 km from Innsbruck



# Agenda

## AEPC Business Meeting Innsbruck

Hall Tyrol, May 27, 2010

17.45–19.45

1. Welcome address of the President Prof. André Bozio
2. Obituary
3. Report of the President (A. Bozio)
4. Report of the Secretary-General (E. Jokinen)
5. Report of the Scientific Secretary (J deGiovanni)
6. Report of the Treasurer (J Stein)
7. News from the Working Groups
  - Cardiac Dysrhythmias and Electrophysiology U. Bauersfeld
  - Fetal Cardiology M. Melander
  - Basic Genetics of Congenital Heart Defects I. Frohn-Mulder
  - Pediatric Cardiovascular Intensive Care E. Da Cruz
  - Cardiac Imaging E. Valsangiacomo Büchel
  - Interventional Cardiology G. Brzezinska-Rajszyz
  - Cardiovascular Morphology A. Angelini
  - Congenital Heart Surgery B. Maruszewski
  - Psycho-Social care from fetus to adult F. Casey
  - GUCH Task Force A. Szatmári
8. Report from the Advisory Board / National Delegates (JP Pfammatter)
9. Introduction of New Members (E Jokinen)
10. Replacement of Council member (E Jokinen)
11. Election of the Secretary-General-Elect (E Jokinen)
12. Future Meetings :
  - 2011 Granada
  - 2012 Istanbul
  - 2013 London
  - 2014 Helsinki
14. Handover of the presidency (A. Bozio)
15. Other businesses?

Wednesday May 26

7h30	<b>Registration 7h30 – 18 h</b>			
8h				
8h30	8h30-15h30			
9				
9h30	<b>Update course WG Cardiac Dysrhythmias and Electrophysiology</b>			
10				
10h30			10h - 13h <b>National Delegates Meeting</b>	10h- 13h <b>SAC - Meeting</b>
11				
11h30				
12				
12h30				
13				
13h30			13h – 15h <b>PAC - Meeting</b>	13h – 15h30 <b>Coding Committee</b>
14				
14h30				
15				
15h30				
16	<b>16h –18h Opening ceremony Mannheimer Lecture</b>			
16h30				
17				
17h30				
18				
18h30	<b>18h – 20h</b>			
19				
19h30	<b>Welcome reception</b>			
20				

Thursday May 27

		Registration 7h30 – 18 h			
7h30					
8h	8h – 9h WG Business Meeting Cardiac Imaging	8h – 9h WG Business Meeting Dysrhythmia/Electrophysiology	8h – 9h WG Business Meeting Cardiovascular Morphology	8h – 9h WG Business Meeting Psychosocial care	8h – 9h WG Business Meeting Intensive Care
9h	9h-10h30 Intercultural attitudes towards Quality of life				
9h30					
10					
10h30		10h30-11h Coffee break, Exhibition and Poster			
11	11h – 12h30 WG Fetal HLHS	11h – 12h30 WG Dysrhythmia/Electrophysiology Ablatio		11h – 12h30 Abstract Session 1 General Paediatrics I	Morphology Hands on
11h30					
12					
12h30	12h30 - 14h Lunch				
13	12h45 – 13h45 Lunch Symposium ( Siemens)		Lunch symposium Junior members		
13h30					
14	14h- 15h30 Joint session WG Fetal/Dysrhythmia - Electrophysiology	14h-15h30 Abstract Session 2 Imaging		14h-15h30 Abstract Session 3 Surgery	
14h30					
15					
15h30		15h30-16h30 Coffee break, Moderated Poster Walk (PW 1 and 2)			
16	16h30 – 18h WG Morphology PAH	16h30-18h WG Intensive Care		16h30-18h Abstract Session 4 GUCH	
16h30					
17					
17h30	18h – 20h AEPC Business Meeting				
18					
18h30					
19					
19h30					
20					

Friday May 28

		<b>Registration 7h30 – 18 h</b>			
7h30					
8h	8h – 9h WG Business Meeting Interventional Cardiology	8h – 9h WG Business Meeting Fetal Cardiology	8h – 9h WG Business Meeting GUCH Task Force	8h – 9h WG Business Meeting Genetics and Basic Science	8h – 9h WG Business Meeting Congenital Heart Surgery
8h30					
9	9h – 10h30 Intercultural approach to heart replacement	9h – 10h30 WG Imaging Stress Echo		9h – 10h30 Abstract Session 5 General Paediatrics II	
9h30					
10					
10h30			10h30-11h Coffee break, Exhibition and Poster		
11	11h – 12h30 Joint Session JSPCC/AEPC	11h – 12h30 Abstract Session 6 Fetal		11h – 12h30 Abstract Session 7 Dysrhythmias and Electrophysiology	
11h30					
12					
12h30		12h30 – 14h Lunch, Exhibition and Poster			
13	12h5-13h5 Lunch symposium (Medtronic) 12h45-13h45 Lunch symposium (AGA)				
13h30					
14	14 – 15h30 Joint session WG Imaging and Interventional Educational Grant (Philips)	14 – 15h30 WG Psychosocial Care/ Nurses Life long care		14 – 15h30 Abstract Session 8 Basic Science	
14h30					
15					
15h30		15h30-16h30 Coffee break, Exhibition and Moderated Poster Walak (PW 3+4)			
16	16h30 – 18h WG GUCH/Genetics Aortopathy	16h30 – 18h WG Psychosocial Care/ Nurses Interprofessional approach		16h30 – 18h Abstract Session 9 Interventional	
16h30					
17					
17h30					
18					
18h30					
19					
19h30					
20	<b>GALA DINNER</b>				

Saturday May 29

7h30	Registration 8h – 14 h						
8h							
8h30							
9	9h-10h30 Joint Session WGs Surgery and Interventional cardiology	9h-10h30 Abstract Session 10 End stage heart and lung disease					
9h30							
10							
10h30	Coffee break, Exhibition and Poster						
11	11h-12h30 Task Force GUCH	11h-12h30 WG Interventional Cardiology					
11h30							
12							
12h30	12h30-13h Keynote lecture Closing Session						
13							
13h30							
14							
14h30							
15							
	POST CONGRESS TOUR						

POST CONGRESS TOUR



*44th Annual Meeting of the  
Association for European Paediatric Cardiology,  
AEPC with joint sessions with the  
Japanese Society of Pediatric Cardiology and  
Cardiac Surgery Innsbruck, Austria  
May 26–29, 2010*

## **SCIENTIFIC PROGRAMME**

---

### **Tuesday, May 25, 2010**

**10:00–18:00 Council Business Meeting**

### **Wednesday, May 26, 2010**

**10:00–13:00 National Delegates Meeting**

**10:00–13:00 SAC-Meeting**

**13:00–15:00 PAC-Meeting**

**13:00–15:00 Coding Committee Meeting**

**13:00–18:00 EAE-Examination**

### **Wednesday, May 26, 2010**

**08:30–15:30 Update course on Paediatric Dysrhythmias and Electrophysiology (unrestricted Educational Grant by Boston Scientific and Medtronic AF Solutions)**

08:30 Opening remarks  
*Urs Bauersfeld*

**08:30–10:00 Session 1: Arrhythmias in children – clinical management issues**  
*Chair: Nico Blom (Leiden, NE), Urs Bauersfeld (Zürich, CH)*

08:30 Incessant SVT and tachycardia induced cardiomyopathy  
*Freek van den Heuvel*

08:55 Management of Wolff-Parkinson-White syndrome  
*Alpay Celiker*

09:20 Hereditary arrhythmia syndromes – an update  
*Arthur A Wilde*

**10:00–10:20 Coffee break**

**10:20–12:00 Session 2: AV block and cardiac pacing in children**  
*Chair: Juha-Matti Happonen (Helsinki, FI), Cristopher Wren (Newcastle, UK)*

10:20 Congenital AV block: etiology and management  
*Eric Rosenthal*

10:45 Cardiac pacing in children: technical issues  
*Eric Rosenthal*

11:10 Echocardiatic assessment of cardiac dyssynchrony  
*Maren Tomaske*

11:35 Cardiac resynchronisation in children and CHD patients  
*Jan Janousek*

**12:00–13:15 Lunch**

**13:15–15:30 Session 3: Arrhythmias in patients with congenital heart disease**

*Chair:* Jan Jnaousek (Prague, CZ), Eric Rosenthal (London, UK)

- 13:15 JET and other postoperative arrhythmias in the ICU  
*Jean Pierre Pfammater*
- 13:40 Sudden death in congenital heart disease  
*Juha Matti Haponen*
- 14:05 ICDtherapy in children and CHD patients  
*Nico Blom*
- 14:30 Surgical management of atrial arrhythmias in Fontan patients  
*Barbara Deal*
- 14:55 Rhythm Quiz and closing remarks  
*Juha Matti Haponen, Nico Blom*

**16:00–18:00 Opening Ceremony**

Mannheimer Lecture

**18:00–20:00 Welcome reception**

**Thursday, May 27, 2010**

**08:00–09:00 WG Business Meetings**

1. Cardiac Imaging
2. Cardiac Dysrhythmias and Electrophysiology
3. Cardiovascular Morphology
4. Psychosocial care
5. Paediatric cardiovascular Intensive Care

**09:00–10:30 Intercultural attitudes towards Quality of Life,**

In cooperation with the Austrian Office of the Network of Institutions for Medical Ethics  
Education of the Unesco Chair of Bioethics

**10:30–11:00 Coffee Break, Posters Exhibition**

**11:00–12:30 WG Fetal cardiology – HLHS – new aspects on fetal diagnosis and management**

*Chair:* Helena Gardiner (London, UK), Mats Mellander, Gothenborg, SW)

Fetal diagnosis and prediction of univentricular circulation and variants with worse prognosis

*Andrea Dragulescu*

Effects on fetal cerebral circulation

*Christoph Berg*

Hybrid or Norwood – enabling the choice and appropriate selection of cases

*Owen Miller*

Ethical aspects on prenatal diagnosis and counseling in fetal AS and HLHS: “Aggressive management of fetuses with emerging HLHS is the most ethical approach in the current era”

Pro Joanna Dangel, con Alain Frasse

*Joanna Dangel, Alain Frasse*

**11:00–12:30 WG Dysrhythmias and Electrophysiology – Diagnosis and Management of fetal dysrhythmia**

*Chair:* Renate Oberhoffer, (Munich, DE), Urs Bauersfeld, (Zürich, CH)

Long term effects of catheter ablation on growing myocardium

*John Phil Saul*

VT in children with structurally normal hearts, role of ablation

*Christopher Wren*

The role of cryoablation in paediatric patients

*Thomas Paul*

Catheter ablation of arrhythmia in operated congenital heart disease

*Joachim Hebe*

**11:00–12:30 Abstract Session 1 – General Cardiology I**

**O1-1 Pre-operative assessment for Total Cavo-pulmonary Connection in Hypoplastic Left Heart Syndrome with MRI alone: Evaluation of outcomes**

*Bellsham-Revell H., Witter T., Razavi R., Bell A.J.*



- O1-2 Total Anomalous Pulmonary Venous Drainage: Outcomes of Post-Operative Pulmonary Venous Obstruction from a Multinational Population-Based Study**  
*Seale A.N., Uemura H., Webber S.A., Partridge J., Roughton M., Ho S.Y., McCarthy K.P., Jones S., Shaughnessy L., Sunnegardh J., Hanseus K., Berggren H., Johansson S., Rigby M.L., Keeton B.R., Daubeney P.E.F.*
- O1-3 Length of pleural effusions after Fontan completion is prolonged with extracardiac Fontan and Right ventricular morphology**  
*Stumper O., Stickley J., Parkes S., Anderson B., Jones T., Barron D., Brawn W.J.*
- O1-4 Congenital Heart Defects in Europe 2000-2005**  
*Garne E., Loane M., Dolk H.*
- O1-5 Results of the PAN study: Congenital heart defects in newborns in Germany – prevalence and association with demographic, genetic and peripartur parameters**  
*Lindinger A., Schwedler G., Hense H.-W.*
- O1-6 SWEDCON – The Swedish Registry of Congenital Heart Disease**  
*Björkhem G., Thilén U.*
- O1-7 What is the optimal dose of clopidogrel in children with heart disease?**  
*Naqvi N., Edwards S, Damda F, Maiya S, Jiggins M, Chubb H, Forrestor S, Slavik Z.*
- 12:30–14:00 Lunch Symposium – Junior Members**
- 12:45–13:55 Lunch Symposium – (with the support of Educational Grant by Siemens)**
- 14:00–15:30 Joint session WGs Fetal Cardiology and Dysrhythmias and Electrophysiology**  
*Chair: Nico Blom (NE), Renate Oberhoffer (Munich, Germany)*
- Making a diagnosis of fetal tachycardia: practice and pitfalls  
*Hana Jicínská*
- Fetal tachycardia: a review of therapeutic options and outcomes  
*Pawel Wlasienko*
- Isolated fetal heart block: current management in Europe – results of the multicentre European study  
*Hakan Eliasson*
- Isolated fetal heart lock: current management in North America – the Toronto experience  
*Edgar Jaeggi*
- Controversies in treatment of CHB – Round Table
- 14:00–15:30 Abstract session 2 Imaging – (with the support of Educational Grant by Tomtec)**
- The right ventricle in tetralogy of Fallot: do we benefit from real-time 3-dimensional echocardiography?  
*Heleen van der Zwaan (Rotterdam, NE)*
- O2-1 Assessment of ventricular function and dyssynchrony in anatomic subtypes of hypoplastic left heart syndrome after Fontan surgery using 2D speckle tracking**  
*Petko C., Hoffmann U., Möller P., Kramer H.-H., Uebing A.*
- O2-2 Present results after correction of Tetralogy of Fallot in Germany – Prospective analysis of 407 patients for realistic expectations in the results of exercise testing and cardiac MRI**  
*Sarikouch S., Dubowy K.O., Burkhardt B., Mir T.S., Hager A., Peters B., Kuehne T., Beerbaum P.*
- O2-3 Pulmonary vascular resistance and systolic-diastolic ventricular function in Fontan patients at rest and during dobutamine stress**  
*Kuehne T., Schmitt B., Steendijk P., Ovroutski S., Lunze K., Rahmzadeh P., Maarouf N., Ewert P., Berger F.*
- O2-4 Experience with dobutamine stress echocardiography in the pediatric population**  
*Joly H., Ducreux C., Henaine R., Sassolas F., Gouton M., Ninet J., Bozio A., Di Filippo S.*
- O2-5 Dobutamine Stress MR in Tetralogy of Fallot with severe pulmonary regurgitation: Is RV-ESV response important?**  
*Parish V., Valverde I., Head C., Greil G., Rosenthal E., Qureshi S.A., Schaeffter T., Sarikouch S., Razavi R., Beerbaum P.*
- 14:00–15:30 Abstract session 3 Surgery/Intensive Care**
- Long term results of double switch operation  
*Yagihara Toshilatsu (Osaka, J)*

- O3-1**      **Rotation of the truncus arteriosus – established surgical procedure**  
*Ovroutski S., Miera O., Peters B., Ewert P., Berger F., Hetzer R., Hübler M.*
- O3-2**      **Bicuspidation of cryopreserved pulmonary homografts for reconstruction of the right ventricular outflow tract**  
*Rega F., Jacobs S., Allaeyts M., Jashari R., Daenen W., Gorenflo M., Heying R., Eyskens B., Gewillig M., Meyns B.*
- O3-3**      **Results of a tissue engineered pulmonary valve in humans**  
*Rickers C., Entenmann A., Fischer G., Scheewe J., Scheid M., Braesen J, Voges I., Hart C., Kramer H.-H.*
- O3-4**      **Early survival in 264 patients following the Sano-modified Norwood procedure: influence of morphologic subtype**  
*Murtuza B., Wall D., Stickley J., Jones T.J., Barron D.J., Brawn W.J.*
- O3-5**      **Small Right Ventricle to Pulmonary Artery Conduits in Infancy**  
*Anderson B.W., Stumper O., Desai T., Stickley J., Jones T., Brawn W., Barron D.*
- 15:30–16:30**    **Poster Walk 1**
- PW1-1**      **Cardiac Magnetic Resonance Imaging (CMRI) for non-invasive assessment of cardiovascular disease in the follow-up of Kawasaki disease**  
*Kuipers I.M., Tacke C.E.A., Groenink M., Spijkerboer A.M., Kuipers T.W.*
- PW1-2**      **Cardiac synchrony and function with chronic single-site left versus right ventricular epicardial pacing in paediatric patients after patch closure of ventricular septal defects**  
*Tomaske M., Janousek J., Kubus P., Gebauer R.A.*
- PW1-3**      **Echocardiographic Evaluation of Left Ventricular Function over time and Risk Factors for Coronary Artery Lesion Formation in Incomplete Kawasaki Patients**  
*Rhie S.K., Kang S.J.*
- PW1-4**      **Reduced left ventricular twist and global strain in patients after tetralogy of Fallot correction is related to right ventricular dysfunction: evidence for detrimental role of apical ventricular-ventricular interaction on left ventricular function**  
*van der Hulst A.E., Delgado V., Holman E.R., Kroft L.J.M., de Roos A., Hazekamp M.G., Blom N.A., Bax J.J, Roest A.A.W.*
- PW1-5**      **Flow-sensitive four-dimensional (4D) magnetic resonance imaging for fast, multiple and accurate blood flow quantification in patients with congenital heart disease**  
*Nordmeyer S., Khasheei A., Riesenkampff E., Schmitt B., Messroghli D., Berger F., Kuehne T.*
- PW1-6**      **Dobutamine Stress-Magnetic Resonance Imaging in repaired Tetralogy of Fallot: Agreement of flow- versus volumetric-derived parameters of cardiac function**  
*Valverde I., Parish V., Razavi R., Greil G., Head C., Qureshi S., Rosenthal E., Schaeffter T., Beerbaum P.*
- PW1-7**      **Interpretation of left ventricular diastolic dysfunction in children: Time for a new approach?**  
*Friedberg M.K., Dragulescu A, Mertens L.*
- PW1-8**      **Higher Dose Dobutamine Stress MR In Tetralogy Of Fallot: Right Ventricular End Systolic Volume (RV-ESV) Is A Reliable Parameter Of Systolic RV Function With Low Observer Variance**  
*Parish V., Valverde I., Head C., Rosenthal E., Qureshi S., Greil G., Schaeffter T., Razavi R., Beerbaum P.*
- PW1-9**      **New insights in patients with aortic coarctation – visualization of flow-sensitive data from 4-dimensional MRI**  
*Fischer M., Unterhinninghofen R., Ley-Zaporozhan J., Rengier F., Eichhorn J., Ley S.*
- PW1-10**      **Cardiac-comitted human embryonic stem cells as a therapeutic agent in congenital right ventricular dysfunction?**  
*Lambert V., Capderou A., Lebrete E., Rücker-Martin C., Gouadon E., Raymond N., Dinanian S., Stos B., Pucéat M., Serraf A., Renaud J.F.*
- PW1-11**      **Is early tissue Doppler diastolic velocity (E') useful to diagnose left ventricular diastolic dysfunction in children with cardiomyopathy?**  
*Friedberg M.K., Dragulescu A., Mertens L.*
- PW1-12**      **Quantification of regional left and right ventricular longitudinal function by 2D speckle tracking imaging in children after atrioventricular node slow pathway ablation**  
*Sileikiene R., Vaskelyte J., Baksiene D., Mizariene V., Ziuteliene A., Jurkevicius R.*

**15:30–16:30 Poster Walk 2**

- PW2-1 Long-term left ventricular adaptation in children and adolescent athletes**  
*Bartkeviciene A., Baksiene D., Raskauskiene N., Vainoras A., Brozaitiene J.*
- PW2-2 Brain Natriuretic Peptide response in functionally univentricular heart: from first days of life to the follow-up of total cavo-pulmonary connection**  
*Cantinotti M., Margaryan R., Arcieri L., Maizza A., Storti S., Prontera C., Luisi S., Bernabei M, Crocetti M, Assanta N, Murzi B.*
- PW2-3 withdrawn**
- PW2-4 BMPR2 mutation in Children with Pulmonary Arterial Hypertension associate with Congenital Heart Disease**  
*Limsuwan A., Wattanasirichaigoon D.*
- PW2-5 The usefulness of scintigraphy with 99m Tc-Anti-Granulocyte antibody for diagnosis and follow-up in children with myocarditis**  
*Ziolkowska L., Kawalec W., Biernatowicz M., Swiatek-Rawa E., Kaminska A., Turska-Kmiec A., Boruc A., Czarnowska E., Brzezinska-Rajszyz G., Raszek M.*
- PW2-6 Effect of dexamethasone on the inflammatory response and myocardial protection during and after arterial switch operation in neonates: A double blind randomized controlled study**  
*Heying R., Wehage E., Tassani P., Haas F., Hess J., Seghaye M.C.*
- PW2-7 Rotational Mechanics and Left Ventricular Propagation Velocity Elucidate Mechanisms of Left Ventricular Diastolic Dysfunction in Children with Dilated Cardiomyopathy**  
*Dillenburg R., Mertens L., Friedberg M.*
- PW2-8 Assessment of myocardial performance index in fetuses with supraventricular tachycardia successfully treated in utero**  
*Dangel J.H., Hamela-Olkowska A.*
- PW2-9 Prevalence of anemia in children with congestive heart failure**  
*Mueller G.C., Schlueter E.L., Arndt F., Bahhidai M., Dodge-Khatami A., Weil J., Mir T.S.*
- PW2-10 Quality of Life and Its Determinants in Parents of Children, Adolescents, and Young Adults with Congenital Heart Disease**  
*Hua Y.C., Chen C.A.*
- PW2-11 Integrated analysis of atrio-ventricular interaction in tetralogy of Fallot**  
*Riesenkampff E., Mengelkamp L., Mueller M., Kropf S., Abdul-Khaliq H., Sarikouch S., Beerbaum P., Hetzer R., Steendijk P., Berger F., Kuehne T.*
- PW2-12 Fibroblasts support functional integration of purified embryonic stem cell-derived cardiomyocytes in avital myocardial tissue**  
*Khalil M., Xi J., Spitzkovsky D., Hannes T., Pfannkuche K., Bloch W., Šarić T., Brockmeier K., Hescheler J., Pillekamp F.*

**16:30–18:00 WG Cardiovascular Morphology – Update on pulmonary arterial hypertension**

Evaluation and current medical treatment  
*Saji, Ben T. (Tokio, J)*

Pathobiology of pulmonary hypertension  
*Annalisa Angelini*

Congenital heart diseases leading to pulmonary hypertension  
*Yen Ho*

Lesson from animal models: pathogenesis and stem cell therapy  
*Arnoud van der Laarse*

New therapeutic approaches : is there a place for reversibility of the lesions?  
*Michael Gatzoulis*

**16:30–18:00 WG Paediatric cardiovascular Intensive Care**

*Chair: Evelyn Lechner (Linz, A), Brigitte Stiller (Freiburg, D)*

Infusion management: a high-risk daily therapy and: how can we reduce SIRS  
*Michael Sasse*

Strategies to prevent or decrease blood transfusion in the ICU  
*Thilo Fleck*

Cardiac index in babies with the new ultrasound dilution technique  
*Valterie Perez de Sa*

Mistakes to learn from: It must not be your own ones case reports  
*Sylvie Di Filippo, Valterie Perez de Sa, Brigitte Stiller*

**16:30–18:00 Abstract session 4 GUCH**

- O4-1**      **Vascular remodeling in adults after coarctation repair – impact of descending aorta stenosis and age at surgery**  
*Trojnaraska O., Szczepaniak-Chichel L., Mizia-Stec K., Gabriel M., Bartczak A., Grajek S., Tykarski A., Gasior Z*
- O4-2**      **Male gender, cyanosis, high NYHA score, chromosomal abnormalities and a systemic right ventricle are independent risk factors for cardiac operations of congenital heart defects in adulthood: A retrospective study on 530 patients**  
*Vogt M., Hörer J., Otto D., Grünewald S., Schreiber Ch., Kaemmerer H., Hess J.*
- O4-3**      **Quality of life of adults after total cavopulmonary anastomosis**  
*Gouton M., Soufi A., Bozio A., Ninet J., Henaine R., Bernard Y., Ducreux C., Sassolas F., Di Filippo S.*
- O4-4**      **Stenting of the lateral Tunnel in Fontan patients – does size matter in GUCH-Patients ?**  
*Haas N.A., Beck C., Laser T.K., Dubowy O., Kececiloglu D., Blanz U., Sandica E.*
- O4-5**      **Neurodevelopmental outcome in children and adolescents with functional single ventricle after total cavopulmonary connection (TCPC)**  
*Vahsen N., Bröder A., Toussaint-Götz N., Asfour B., Schneider M.*
- O4-6**      **Recurrence of congenital heart disease in offsprings of mothers with congenital heart disease screened prenatally by echocardiography**  
*Fesslova V., Brankovic J., Piazza L., Villa L., Meli V.*
- O4-7**      **Role of electrophysiological study after surgical pulmonary valve replacement and right ventricular remodelling in GUCH patients with pulmonary regurgitation and aneurysmal RVOT dilatation**  
*Tavera M.C., Foresti S., Lupo P.P., Ali H., De Ambroggi G., Pittalis M., Giamberti A., Chessa M., Negura D., Micheletti A., Carminati M., Cappato R.*

**18:00 – 20:00 AEPC Business Meeting**

**Friday, May 28, 2010**

**08:00–09:00 WG Business Meetings**

6. Interventional Cardiology
7. Fetal Cardiology
8. GUCH Task force
9. Genetics and Basic Science
10. Congenital Heart Surgery

**09:00–10:30 Intercultural approach to heart replacement therapy**

**09:00–10:30 WG Imaging – Stress imaging in CHD**

*Chair: Ornella Milanese (Padua IT), John Simpson (London UK)*

Coronary artery disease and CHD – when is stress assessment indicated?

*Helmut Baumgartner*

Stress test and quality of life in long-term after Kawasaki

*Masahiro Ishii (Kanagawa, J)*

Stress-echocardiography: when and how to perform

*Jan Marek*

MRI stress imaging: when and how to perform

*Willem A Helbing*

**09:00–10:30 Abstract session 5 General Cardiology II**

- O5-1**      **Relationship of Aortic Pulse Wave Velocity and Baroreceptor Sensitivity to Blood Pressure Control in Patients with Repaired Coarctation of the Aorta**  
*Kenny D., Polson J.W., Martin R.P., Cockcroft J.R., Wilson D.G., Caputo M., Paton J.F.R., Wolf A.R.*
- O5-2**      **Ventricular pressure-volume loops obtained by three dimensional echocardiography and mini pressure wire**  
*Herberg U., Bernhardt C., Breuer T., Doll U., Knies R., Schirrmeyer J., Vlajnic D., Breuer J.*
- O5-3**      **Exercise Stress Echocardiography as a Novel, Effective Method to detect Coronary Allograft Vasculopathy in Paediatric Heart Transplant Recipients: Comparison with Myocardial Perfusion SPECT-Imaging**  
*Lunze F.I., Gauvreau K., Bergersen L., Geva T., Colan S.D., Blume E.D., Chen M.H.*

- 05-4 Results of cardiac surgery during neonatal period – focus on morbidity, psychomotor aspects and quality of life**  
*Wolf N., Woerner C., Schulze J., Henjes S., Kostelka M., Janousek J., Dähnert I.*
- 05-5 Hypothermia during repair of ventricular septal defects (VSD) in infants prolongs postoperative mechanical ventilation and inotropic support**  
*Fedarava K., Schmitt K., Hübler M., Berger F., Miera O., Hetzer R.*
- 05-6 Long- and midterm results of the Growth Stent for the transcatheter treatment of aortic coarctation in infants**  
*Ewert P., Schubert S., Yilmaz S., Peters B., Miera O., Ovroutski S., Nagdyman N., Berger F.*
- 05-7 Prognosis of non-compaction cardiomyopathy in the pediatric population**  
*Veyrier M., Teyssier G., Henaine R., Sassolas F., Ducreux C., Gouton M., Ninet J., Bozio A., Di Filippo S.*
- 10:30–11:00 Coffee Break, Posters Exhibition**
- 11:00–12:30 Joint session JSPCCS AEPC – Hot topics**  
*Chair: Andre Bozio (Lyon F), Makoto Nakazawa (Tokio, J)*
- 11:00–12:30 Abstract session 6 Fetal cardiology**
- 06-1 Impact of antenatal diagnosis on outcomes of neonates with coarctation of the aorta**  
*Di Filippo S., Abid D., Henaine R., Sassolas F., Ducreux C., Ninet J., Bozio A.*
- 06-2 Impact of Prenatal Diagnosis on Outcome of Pulmonary Atresia with Intact Ventricular Septum**  
*Tuo G., Serafino M., Volpe P., Zannini L., Petrucci L., Calevo M.G., Marasini M.*
- 06-3 3D reconstruction of the first and early second trimester human fetal heart**  
*Gardiner H., Matsui H., Mohun T., Ho S.Y.*
- 06-4 Prolongation of the Atrio-Ventricular Conduction in Fetuses Exposed to Maternal Anti-Ro/SSA Antibodies does not Predict Progressive Heart Block**  
*Jaeggi E., Silverman E.D., Golding F., Weber R.*
- 06-5 Impact of prenatal diagnosis on outcome of univentricular heart disease**  
*Stiasny B., Fasnacht M., Prêtre R., Bauersfeld U., Valsangiacomo Buechel E.R.*
- 06-6 Cardiac function between 11 and 35 weeks' gestation in trisomy 21 fetuses**  
*Clur S.A., Ottenkamp J., Bilardo C.M.*
- 06-7 Prenatal brain pathology in congenital heart disease – does oxygen saturation of cerebral blood influence its occurrence?**  
*Mlczech E., Brugger P., Hanslik A., Ulm B., Salzer-Muhar U., Prayer D.*
- 11:00–12:30 Abstract session 7 Dysrhythmias and Electrophysiology**
- 07-1 Epicardial ablation of ventricular tachycardia in arrhythmogenic right ventricular cardiomyopathy in children**  
*Pokushalov E., Romanov A., Artemenko S., Shugaev, Turov A., Shirokova N.*
- 07-2 Arrhythmia in patients older than 40 years undergoing transcatheter closure of atrial septal defect**  
*Wang J.K., Wu M.H., Lin F.Y., Lin J.L., Tsai S.K.*
- 07-3 Non-fluoroscopic Navigation for Accessory Pathway Ablation in Pediatric and Young Adult Congenital Patients: Impact of Accessory Pathway Location**  
*Papagiannis J., Avramidis D., Kazantzidis S., Kovra S., Alexopoulos C., Kirvassilis G.*
- 07-4 Acute and Long-Term Outcome after Catheter Ablation of Atrial Tachycardia in post- Fontan Patients**  
*Hessling G., Wu J., Pflaumer A., Hoppmann P., Estner H., Jilek C., Deisenhofer I., Hess J.*
- 07-5 LV Pacing Preserves Ventricular Synchrony and Function in Children with AV Block and Structurally Normal Heart as Compared to RV Pacing Sites: A Multi-Center Study**  
*Janousek J., van Geldorp I.E., Prinzen F.W., Vanagt W., Delhaas T., Elders J., Früh A., Kubus P., Tomaske M., Ganame J., Nagel B., Papagiannis J., Wren C., Nürnberg J.-H., Gebauer R.A.*
- 07-6 Massive septal hypertrophy as a risk factor for malignant cardiac arrhythmias in children with hypertrophic cardiomyopathy**  
*Boon G.B., Bókenkamp R., Blank A.C., Frohn-Mulder I.M.E., Delhaas T., Wolterbeek R., Kuipers I.M., Rammeloo L.A.J., Reimer A., Blom N.A.*
- 07-7 Withdrawn**

**12:30–14:00 Lunch, Posters, Exhibition**

**12:45–13:45 Lunch symposium (with support of Educational Grant by AGA)**

**12:55–13:55 Lunch symposium (with support of Educational Grant by Medtronic)**

**14:00–15:30 Joint session WG Imaging/Interventional (with support of Educational Grant by Philips)**  
*Chair: Emanueleal Valsangiacomo-Buechel (Zürich, CH), Grazyna Brzezinska-Raiszys (Warsaw, PL) Micro-TEE in neonatal surgery*  
*John Simpson*  
MRI for planning catheter guided interventions  
*Andrew Taylor*  
Planning aortic valve dilatation: can 3D ecocardiography influence decision making?  
*Mark Friedberg*  
Intracardiac ecocardiography during interventions for congenital heart disease  
*Massimo Chessa*  
Performing ASD closure without radiation in children: pro Peter Ewert, contra Shakeel Qureshi  
*Peter Ewert, Shakeel Qureshi*

**14:00–15:30 WG Psychosocial care/Nurses programme I**  
Improving Behaviour and Educational Outcomes for Children with CHD  
*Matley, S*  
Lifestyle Choices for Adolescents with CHD  
*Katya de Groot*  
Treating the whole child  
*Frank Casey*

**Transition - problems and needs**

**14:00–15:30 Abstract session 8 Basic Science and Genetics**

- O8-1 Experimental development of a polydioxanone electrospun tissue-engineered valved patch as a new tool for repair of the right ventricular outflow tract in congenital heart diseases**  
*Kalfa D., Bel A., Chen-Tournoux A., Della Martina A., Rochereau P., Coz C., Bellamy V., Bensalah M., Mousseaux E., Bruneval P., Larghero J., Menasché Ph.*
- O8-2 Development of major aorto-pulmonary collateral arteries in VEGF120 isoform mouse embryos with Tetralogy of Fallot**  
*Rammeloo L.A.J., Wisse L.J., DeRuiter M.C., Gittenberger-de Groot A.C.*
- O8-3 Right ventricular adaptation to pressure and volume load in mice**  
*Bartelds B., Borgdorff M.A., Smit-van Oosten A., Takens J., Nederhoff M., van Gilst W.H., de Windt L.J., Berger R.M.*
- O8-4 Functional role of TASK-1 in the heart-studies in TASK-1 deficient mice**  
*Donner B.C., Schullenberg M., Geduldig N., Decking U., Zacharowski K., Wisden W., Schmidt K.G.*
- O8-5 Spontaneous differentiation of embryonic stem cells leads to functionally diversity of cardiac myocytes**  
*Hannes T., Halbach M., Wolff M., Pfannkuche K., Doss M.X., Sachinidis A., Hescheler J., Brockmeier K., Pillekamp F., Khalil M.*
- O8-6 Mutations in TRPM4 cause autosomal dominant isolated cardiac conduction disease**  
*Bouvagnet P., Lui H., El Zein L., Bozio A., Mégarbané A., Blaysat G., Vilain E.*
- O8-7 Ductal Stenting: Histopathology and Immunohistochemistry in 24 specimen**  
*Sigler M., Foth R., Quentin T., Schneider M., Kriebel T., Paul T., Michel-Behnke I.*

**15:30–16:30 Coffee, Posters, Exhibition**

**15:30–16:30 Poster Walk 3**

- PW3-1 Isolated Coarctation of the Aorta: experience in 100 consecutive patients**  
*Ferreira Martins J.D., Costa G., Gouveia S., Paramés F., Freitas I., Trigo C., Fragata J., Pinto F.*
- PW3-2 Catheter Ablations in Children with Ventricular Tachycardia**  
*Pokushalov E., Romanov A., Artemenko S., Shugaev P., Turov A., Shirokova N.*
- PW3-3 Transeptal access to the left atrium following atrial septal device closure – feasibility and force needed with 3 different permanent and one absorbable closure device**  
*Jux C., Kroll M., Steinmetz M., Michaelis I., Quentin T.*

- PW3-4 Simplified 3-lead ECG as screening tool for LQT syndrome in children**  
*Germanakis I., Androutsopoulou G., Perakaki R., Kakouri P., Kalmanti M.*
- PW3-5 The Importance of the Level of Maternal Anti-Ro/SSA Antibodies as a Prognostic Marker of the Development of Cardiac Neonatal Lupus Erythematosus: A Prospective Study of 186 Antibody-Exposed Fetuses and Infants**  
*Jaeggi E., Laskin C., Hamilton R.M., Kingdom J., Silverman E.*
- PW3-6 Randomized controlled trial comparing two heparinization protocols for prophylaxis of vascular thrombosis during cardiac catheterization in children – the HEARTCAT study**  
*Hanslik A., Kitzmüller E., Mlekusch W., Salzer-Muhar U., Michel-Behnke I., Male C.*
- PW3-7 NT-pro-brain natriuretic peptide (N-BNP) reflects strongly left ventricular volume load before and after PDA closure in children and adolescents**  
*Mueller G.C., Mir T.S., Arndt F., Samson-Himmelstjerna P., Dodge-Khatami A., Weil J.*
- PW3-8 Complications after pulmonary artery stenting in patients with hypoplastic left heart syndrome (HLHS) – what to be afraid of**  
*Moszura T., Mazurek-Kula A., Dryżek P., Górcznyi S., Moll J.A., Moll J.J., Sysa A.*
- PW3-9 Diagnostic and interventional percutaneous catheterization in the early postoperative period (≤30 days) after congenital heart surgery in children – a single-centre experience**  
*Kretschmar O., Balmer C., Prêtre R., Dave H., Knirsch W.*
- PW3-10 First experience with the epicardial application of a transvenous 4.1 Fr lumenless pacemaker lead in patients with congenital heart disease**  
*Peters B., Miera O., Ewert P., Hacke P., Alexi-Meskishvili V., Stamm C., Huebler M., Hetzer R., Berger F.*
- PW3-11 Long-term survival after paediatric cardiac surgery for congenital heart defects**  
*Sunnegardh J.T., Berggren H, Synnergren M*
- PW3-12 Device Occlusion of Atrial Septal Defects (ASD) Without Balloon Sizing: Results of a Multicenter Registry**  
*Radtke W.A.K., Holzer R., Owada C., Bandisode V.M., Lim S, Everett A*
- 15:30–16:30 Poster Walk 4**
- 16:30–18:00 Joint session WGs Basic Science and Genetics and GUCH Taskforce – Marfan Syndrome**
- 16:30–18:00 WG Psychosocial care/Nurses programme II**
- 11-1 Doctors don't meet information needs of children and teenagers with CHD**  
*Lesch W., Specht K., Lux A., Frey M., Bauer U.*  
Psychosocial consequences of diagnosis of hypertrophic cardiomyopathy in asymptomatic children through family screening  
*Ewa-Lena Bratt*  
Experienced health state in adults with congenital heart disease- an analysis from the swedish GUCH-registry  
*Malin Berghammers*
- 16:00–17:30 Abstract session 9 Interventional Cardiology**
- O9-1 Fetal assessment of borderline small left ventricles: Can we predict those with a need for a postnatal intervention?**  
*Weber R., Ayala-Arnez R., Atiyah M., Manlhiot C., McCrindle B.W., Hickey E.J., Jaeggi E.T, Nield L.E.*
- O9-2 In-utero intervention for fetal critical aortic stenosis: indications, complications, results and outcome in 23 consecutive patients**  
*Tulzer G., Arzt W., Veit I., Wertaschnigg D., Gitter R., Mair R.*
- O9-3 Patient selection for neonatal aortic balloon dilation. Who is suited for biventricular circulation?**  
*Georgiev S., Eicken A., Balling G., Hess J.*
- O9-4 Percutaneous pulmonary valve implantation – Initial two center experience**  
*Eicken A., Ewert P, Hager A, Peters B, Fratz S, Kuehne T, Hess J, Berger F*
- O9-5 Stenting of aortic coarctation: Acute, intermediate, and long-term results of a prospective multi-institutional registry – CONGENITAL CARDIOVASCULAR INTERVENTIONAL STUDY CONSORTIUM (CCISC)**  
*Holzer R.J., Qureshi S., Vincent J., Ghasemi A., Sievert H., Alday L.E., Peirone A., Gruenstein D.H., Forbes T., Weber H.S., Zeller T., Cheatham J.P., Slack M., Jarvois A.J., Hoyer M.H., Rome J*

**09-6 Stenting the arterial duct in neonates and infants with congenital heart disease and duct-dependent pulmonary blood flow: a multicentre experience of 65 patients**

*Udink ten Cate F.E.A., Hamza H., Agha H., Kohli V., Emmel M., Qureshi S.A., Sreeram N., Rosenthal E.*

**09-7 Mid-term follow-up of treatment of middle aortic syndrome in children**

*Brzezińska-Rajszyś G., Zubrzycka M., Rewers B., Książyk J., Antoniewicz J., Turska-Kmieć A., Kościeszka A., Ostojka-Chyżyńska A.*

**WG Morphology Hands on**

**08:00–18:00 Posters**

**Arrhythmia/electrophysiology**

**P-1 Beta-blockers in the management of Congenital Long QT Syndrome**

*Chockalingam P., Beckmann B.M., Clur S.A.B., van den Heuvel F., Kaab S., Blom N.A., Wilde A.A.M.*

**P-2 Dyssynchrony and ventricular function improve following catheter ablation of non-septal accessory pathways in children**

*Abadir S., Fournier A., Dubuc M., Hugues N., Garceau P., Khairy P.*

**P-3 Sudden cardiac death: clinical evaluation of paediatric family members**

*Tomaske M., Bauersfeld U.*

**P-4 On the origin of the Y111C/KCNQ1 founder mutation- a major cause of the Long QT Syndrome in Sweden**

*Winbo A., Diamant U.B., Rydberg A., Jensen S.M., Stattin E.L.*

**P-5 Feasibility and reproducibility of conventional and color-coded tissue Doppler M-mode echocardiography in the assessment of septal-to-posterior wall motion delay in children and adolescents with right ventricular pacing**

*Udink ten Cate F.E.A., Schmidt B.E., Wiesner N., Krüssell M.A., Sheta S.S., Breuer J., Trieschmann U., Brockmeier K., Sreeram N.*

**P-6 Can primary health care physicians interpret pediatric ECGs?**

*Germanakis I., Nasikas D., Kalmanti M.*

**P-7 withdrawn**

**P-8 Ventricular automatic capture (AC) is feasible and safe with unipolar epicardial leads in young patients with congenital heart**

*Kerst G., Gass M., Apitz C., Nagy Z., Ziemer G., Hofbeck M*

**P-9 6-year experience with implanted cardioverter-defibrillators (ICD) in children in**

**Department of Cardiology at Children's Memorial Health Institute, Warsaw, Poland**

*Brzezinska-Paszke M., Bieganowska K., Miszczak-Knecht M., Rękawek J., Kaszuba A., Raszek M., Kawalec W., Birbach M*

**P-10 Drug-refractory arrhythmias: radiofrequency ablation in neonates**

*Brugada G., Bartrons J., Jimenez L., Rissech M., Carretero J., Prada F., Brugada J*

**P-11 Impact of the individual circadian QTc variance for the validation of QT prolongation in children and adolescents**

*Fischer M., Ulmer H.E*

**P-12 Diagnostic Accuracy of Brain Natriuretic Peptide for Congenital Heart Disease in the First Month of Life**

*Cantinotti M., Arcieri L, Margaryan R, Maizza A, Storti S, Prontera C, Luisi S, Bernabei M, Crocetti M, Assanta N, Clerico A, Murzi B.*

**P-13 Percutaneous Transcatheter creation of an aortopulmonary shunt in an animal experimental model**

*Sabi T., Schmitt B., Sigler M., Ovroutski S., Peters B., Miera O., Nagdyman N, Kuehne T., Berger F, Ewert P.*

**P-14 The Relation of Serum Levels of Matrix Metalloproteinases and Their Tissue Inhibitors with Cardiac Functions in Congenital Heart Diseases**

*Kilic Z., Ucar B., Erdogan P., Colak O., Demir T., Ertugrul T*

**P-15 Endothelial pro-inflammatory and pro-coagulant activity in a model of**

**S. aureus endocarditis – impact of matrices used in tissue-engineered heart valves**

*Heying R., Wolf C., Beekhuizen H., Jockenhoevel S., Moelleken M.L., Hoylaerts M., Schmidt K.G., Schroten H.*

**P-16 Hypothermia decreases apoptosis after oxidative stress in cardiomyocytes**

*Drescher C., Diestel A., Berger F., Schmitt K.*



- P-17 Deep hypothermia prevents inflammation but leads to cellular stress in a coculture model of endothelial cells and macrophages**  
*Wollersheim S., Diestel A., Berger F., Schmitt K.*
- P-18 Fibroblasts facilitate the engraftment of embryonic stem cell-derived cardiomyocytes on three dimensional collagen I matrices**  
*Attia W., Pfannkuche K., Hescheler J., Brockmeier K.*
- P-19 Closure of Muscular Ventricular Septal Defects with a New Self Centering Patch System in a Large Animal Model**  
*Lang N., Mever A., Merkel E., Thalmann R., Lehner A., Freudenthal F., Vasilyev N., DeINido P., Netz H., Kozlik-Feldmann R.*
- P-20 Pulmonary artery banding as a novel therapeutic option for dilative cardiomyopathy (DCM): Thoughts about interaction between RV and LV in children with isolated RV pressure load due to pulmonary valve stenosis**  
*Mueller G.C., Arndt F., Eman H.M., Schaefer A.-L., Mir T.S., Dodge-Khatami A., Weil J.*
- P-21 Ventricular assist devices: initial experience in a spanish center with the Berlin Heart EXCOR**  
*García-Guereta L., Aroca A., Villar MA., Menéndez J., Carton A., Polo L., Oliva P., Cerro MJ., Rodriguez E., Gutiérrez-Larraya F., Villagrà*
- P-22 Eisenmenger Syndrome and Bosentan Therapy: a single centre experience**  
*Agnetti A., Tchana B., Carano N., Allegri V., Bo I., Dutto M., Quadrini I., Macchi C., Al-Obeyde M., Squarcia U.*
- P-23 15 year follow-up in renal function after pediatric heart transplantation in a single center**  
*Behnke-Hall K., Bauer J., Thul J., Logeswaran T., Horn M., Akintürk H., Valeske K., Schranz D.*
- P-24 Recurrence rate of cardiac disease in cases with family history of cardiomyopathy referred for fetal echocardiography**  
*Fesslova V., Brankovic J.,Piazza L., Villa L., Meli V.*
- P-25 Does Prenatal Anti-inflammatory Treatment prevent from Late-Onset Dilated Cardiomyopathy (DCM) in Children with Immune-Mediated Congenital Complete AV Block (CAVB)? Results of a Retrospective Multicenter Experience**  
*Hutter D.M., Hornberger L., Cuneo B., Fourn J.-C., Grady A., Friedberg M., Silverman N., Jaeggi E.*
- P-26 Withdrawn**
- P-27 Can mid-trimester Doppler flow echocardiography predict an abnormal postnatal ECG?**  
*Sonesson S.-E., Bergman G., Wahren-Helenius M.*
- P-28 Gene Expression In Atrioventricular Junction From Fetal Hearts**  
*Hamilton M.R., Su B.B., Lung K., Capecci M., Yan J.Y., Cui R., Liu L.*
- P-29 Prenatal diagnosis and outcome of fetuses with transposition of the great arteries (TGA)**  
*Rasiah S.V., Ewer A.K., Tonks A., Miller P., Wright J.G., Kilby M.D.*
- P-30 Diagnosis and outcome of prenatally diagnosed atrio-ventricular septal defect**  
*Kraska A., Wlasienko P., Kuran J., Dangel J.H.*
- P-31 Fetal critical aortic stenosis – with or without pharmacological transplacental treatment?**  
*Mozsura T., Michalak K.W., Respondek-Liberska M., Janiak K., Ostrowska K., Sysa A.*

#### General paediatric cardiology

- P-32 An elevated value of a drug-induced lymphocyte stimulation test for immunoglobulin is one of the immunological abnormalities of Kawasaki disease**  
*Nomura Y., Masuda K., Eguchi T., Morita Y., Arata M., Ueno K., Kawano Y.*
- P-33 Dynamics of Oxidative Stress in the Chronic Stage of Kawasaki Disease**  
*Yahata T., Suzuki C., Hamaoka A., Fujii M., Ozawa S., Hamaoka K.*
- P-34 The long-term outcome of cardiac sequelae with special reference to myocardial lesions and dysrhythmias in Kawasaki patients who reached adult**  
*Yonesaka S., Takahashi T., Otani K., Jun S., Konno Y., Sato T., Kitagawa Y., Eto S., Ueda T., Sato A., Ichinose K., Kinjo M.*
- P-35 Tricuspid annular plane systolic excursion (TAPSE) in pediatric and adolescent patients with tetralogy of Fallot (TOF), patients with atrial septal defect (ASD), and age-matched normal subjects**  
*Koestenberger M., Nagel B., Stueger HP., Ravekes W., Everett A.D., Heinzl B., Sorantin E., Cvirn G., Gamillscheg A.*

- P-36 Alveolar To Arterial Oxygen Tension Difference Increases Due To Mild Impediment Of Pulmonary Circulation In Patients After Bidirectional Glenn Anastomosis**  
*Hamamichi Y., Ishii R., Terashima Y., Kadota A., Kawazu Y., Inamura N., Kayatani F., Kawata H., Kishimoto H.*
- P-37 Moderate Hypoventilation Is Risk Factor For Residual Pulmonary Hypertension In Down Syndrome With Left-to-right Shunts Defects**  
*Hamamichi Y., Ishii R., Terashima Y., Kadota A., Kawazu Y., Inamura N., Kayatani F., Kawata H., Kishimoto H.*
- P-38 Risk factors for postoperative subaortic stenosis: a serious long-term complication to detect early**  
*Kalfa D., Ghez O., Metras D., Kreitmann B.*
- P-39 Markers of endothelial dysfunction in youths with essential arterial hypertension**  
*Plotnikova I.V., Kovalev I.A., Suslova T.E., Churilova V.O., Bezlyak V.V.*
- P-40 Radiofrequency ablation influence on intracardiac hemodynamics in children with idiopathic ventricular premature beats**  
*Chernushev A.A., Zavodovsky K.V., Kovalev I.A., Popov S.V., Lishmanov Yu.B.*
- P-41 Pharmacological test with sildenafil at pulmonary hypertension assessing in children with congenital heart diseases**  
*Yanulevich O.S., Ivanov S.N., Kovalev I.A., Krivoshechekov E.V.*
- P-42 Immune Globulin Therapy is Associated with Better Outcome of Infants and Children with Cardiomyopathy Induced Heart Failure**  
Results from centers with no pediatric heart transplantations  
*Kampel L., Perles Z., El-Lahham N., Braun J., Rein A.J.J.T., Nir A.*
- P-43 Executive function and social cognition in school-aged children after neonatal corrective cardiac surgery for transposition of the great arteries**  
*Calderon J., Bonnet D., Courtin C., Concordet S., Plumet M.H., Angeard N.*
- P-44 Quality of Life in Patients with Congenital Heart Disease**  
*Silva A.M., Vaz C., Areias M.E.G., Vieira D., Proença C., Viana V., Moura C., Areias J.C.*
- P-45 Six-minute walk distance in obese children and adolescents – effect of a weight reducing program**  
*Geiger R., Rauchenzauner M., Willeit J., Rummel M., Högler W., Stübing K., Stein J.-I.*
- P-46 Anomalous Origin of the Left or Right Coronary Artery from the Pulmonary Artery (ALCAPA/ARCAPA): A 10-year single center experience**  
*Flosdorff P., Riede F.T., Suchowerskyj P., Cho M., Kostelka M., Dähnert I.*
- P-47 Volatile substance abuse: Evaluation of QT Dispersion and sudden death risk in children with volatile substance addiction**  
*Levent E., Can S., Demir E, Yüncü Z, Özyürek A.R.*
- P-48 Croatian Study (2002-2007): Distribution of congenital heart defects and outcome analysis**  
*Malčić I., Dilber D*
- P-49 Intrauterine Growth Restriction does not impair Cardiac Function and Vascular Compliance in Infants**  
*Jaeggi E., Shah J., Keating S., Kingdom J., Bradley T., Keeley F., Redington A.*
- P-50 Physical Examination: The Oldest but Still an Up-to-Date Diagnostic Method**  
*Kula S., Pektas A., Cevik A., Taskin B.D., Oguz A.D., Tunaoglu F.S., Olgunturk R.*
- P-51 Catheter Haemodynamic Assessment with Pharmacological Stress to unmask Obstruction of the Fontan Circulation**  
*Manne P., Bhole V., Stumper O.*
- P-52 withdrawn**
- P-53 Interest of beta-blockers in patients with right ventricular systemic dysfunction**  
*Bouallal R., Godart F., Richard A., Francart C.*
- P-54 Beta-blocker therapy improves diastolic function and reduces hypertrophy in asymptomatic childhood familial hypertrophic cardiomyopathy**  
*Östman-Smith I., de-Wahl Granelli A, Allahyari P*
- P-55 Quality of life in children, adolescents, and young adults with congenital heart disease**  
*Henzinger H., Stein J.-I.*
- P-56 Analytical comparison for the case definition of elevated type-b amino-terminal pro-natriuretic peptide in acute Kawasaki disease**  
*Dahdah N., Fournier A., Cousineau J., Delvin E., Mir T., Nir A.*
- P-57 Dysphagia lusoria caused by Aberrant right subclavian artery in severity is as same as complete vascular ring in schoolchildren: validated by Esophageal Manometry**  
*Chen F.L., Kuo S.M., Li Y.C.*

- P-58 Effects of Endothelin-Receptor-Antagonism on Left Ventricle and Arterial Blood Pressure in Children with Pulmonary Arterial Hypertension**  
*Baumgartner S., Salzer-Muhar U.*
- P-59 Coronary artery ostial anomalies in common arterial trunk**  
*Houyel L., Bajolle F., Bonnet D*
- P-60 Home INR monitoring of oral anticoagulation in children using a point-of-care INR monitor**  
*Bajolle F., Lasne D., Elie C., Souillard P., Bonnet D.*
- P-61 Prediction of tilt test results based on patient's history in children with neurocardiogenic syncope**  
*Wieniawski P., Janiec I., Werner B.*
- P-62 The reference values of aortic pulse wave velocity (PWVao) in a healthy population aged 3-18 years and the plausible physiological background of the observed changes**  
*Hidvégi E., Huberth J., Jákl Gy., Kelemen I., Klemencz H., Illyés M.PhD*
- P-63 Incidence and risk factors of restenosis after surgery for subaortic stenosis**  
*Varan B, Gokdemir M., Tokel K., Cindik N., Ozkan S., Ozkan M., Aslamaci S.*
- P-64 Cardiovascular abnormalities in children with Alagille syndrome**  
*Turska-Kmiec A., Mirecka-Rola A., Zuk M., Biernatowicz M., Daszkowska J., Rewers B., Ziolkowska L., Kowalczyk M., Kawalec W., Jurkiewicz D, Zubrzycka M.*
- P-65 Non-invasive cardiac output determination in children with congenital AV block treated by ventricular pacing**  
*Wiegand G., Kerst G., Baden W., Hofbeck M.*
- P-66 The CIVIC Study: Hospitalizations for acute respiratory infections in young children with significant heart disease. Four seasons (2004-2008) in Spain**  
*Medrano C., García-Guereta L., Grueso J., Insa B., Ballesteros F., Casaldaliga J., Cuenca V., Escudero F., Garcia-de la Calzada D., Luis M., Mendoza A., Prada F., Rodriguez MM., Suarez P., Quero C., Rueda F., Gomez H.*
- P-67 Longitudinal data on ascending aortic dimension in Turner patients**  
*Fournier A., Hugues N., Brugada G., Mivelaz Y., Deal C., Thambo J.B., Dahdah N.*
- P-68 Steroids and Vascular Resistance Reducing Agents Improve Cardiac Outcome and Survival in Patients with Duchenne Muscular Dystrophy**  
*Fournier A., Therien J., Schram G., Dahdah N.*
- P-69 Doppler tissue imaging analysis of right ventricular myocardial velocities in the third trimester fetuses and normal neonates – preliminary study**  
*Hamela-Olkowska A., Bokiniac R., Dangel J.H.*
- P-70 Acute rheumatic fever outcomes in 602 children; Kayseri/Türkiye experience**  
*Narin N, Mutlu FT, Baykan A, Hanedan Onan S, Sezer S, Uzum K, Baykan Z*
- P-71 Surgical treatment of aortic coarctation within the first year of life: a 10 year review (clinical, surgical, biomechanical aspects)**  
*Teivane E., Lacis A., Ozolins V., Smits L., Sikora N., Bergmane I*
- P-72 Williams Beuren syndrome may present as neonatal coarctation**  
*Kammache I., Acar P., Amedro P., Fouilloux V., Ou P., Kreitmann B., Fraisse A.*
- P-73 Severe pulmonary hypertension in bronchopulmonary dysplasia: high incidence of associated cardiovascular abnormalities**  
*Cerro MJ., Deiros L., Labrandero C., Guereta L., Rubio D., Fernandez A., Burgueros M., Bret M., Barrio M., Martinez MC., Diaz C., Menendez J.*
- P-74 Intramyocardial Injection of Autologous Bone Marrow derived progenitor Cells in Case of Dilated Cardiomyopathy in Four Month Old Child**  
*Bergmane I., Lubaua I., Ozolins V., Lacis A. Narbutė I., Jegere S., Ramata-Stunda A., Jakobsons E., Erglis A.*
- P-75 Congenital Heart defects in Kabuki Syndrome at North-Eastern Region of Romania**  
*Iordache C., Luca A.C., Panzaru M.C., Volosciuc M., Braha E., Moisa S.M.*
- P-76 Romanian Study on Arterial Hypertension Prevalence and Cardiovascular Risk Factors on 5290 Children and Adolescents**  
*Cinteza E., Gherghina I., Anca I., Iagaru N., Matei D.*
- P-77 Morphometric analysis of coronary arteries after arterial switch procedure for transposed great arteries**  
*Moll M., Michalak K.W., Moll J.A., Moszura T., Kopala M., Młudzik K., Moll J.J.*
- P-78 Incidence of congenital heart disease in a series of outpatients referred to a tertiary level pediatric cardiac center**  
*Kristo I., Lunardini A., De Lucia V., Recla S., Ait-Ali L., Spadoni I., Giusti S., Biagini A.*

- P-79 Health- related quality of life in patients with congenital heart disease – comparison with healthy children and adolescents**  
*Toussaint-Götz N., Vahsen N, Kaestner M., Hombach A., Kallenberg R., Zartner P., Wiebe W., Schneider M.*

#### GUCH and outcomes

- P-80 Determining the Approaches to Facilitate the Patent Ductus Arteriosus Closure procedure with Amplatzer Duct Occluder Device in Adult Patients**  
*Pac F.A., Polat T.B., Oflaz M.B., Balli S., Kibar E., Ece I.*
- P-81 When is the right time for MRI in patients after TOF correction?**  
*Kantorova A., Kaldararova M., Neuschl V., Nosal M., Masura J., Hraska V.*
- P-82 Psychosocial Adjustment and Proneness to Psychopathology in Adolescents and Young Adults with Congenital Heart Diseases (CHD)**  
*Vieira D., Proença C., Areias M.E.G., Silva A.M., Vaz C., Viana V., Moura C., Areias J.C.*
- P-83 Medical attendance of adult patients with congenital heart disease**  
*Bauer U., Niggemeyer E., Vigl M., Paulick M., Lux A.*
- P-84 Testing a new disease specific quality of life measure for children and adolescents with heart disease in the United Kingdom (UK)**  
*Wray J., Franklin R., Brown K., Casale L., Guy S., Blyth J., Cassedy A., Marino B.*
- P-85 Aortic valve-sparing operations for ascending aortic aneurysmal disease: promising midterm results in young patients with congenital cardiovascular pathology**  
*Francois K., Bove T., Van Belleghem Y., De Backer J., De Wolf D., Suys B., Van Nooten G.*
- P-86 Prevalence of reflex, vaso-vagal syncope in young adults long term follow-up correction of d-transposition of great arteries by Senning atrial switch**  
*Pietrucha A.Z, Pietrucha B.J., Czubek U., Mroczek-Czernecka D., Wegrzynowska M., Piwowarska W., Nessler J.*

#### Imaging/functional assessment

- P-87 Early changes in Right Ventricular Function and their Clinical Consequences in Childhood Dilated Cardiomyopathy**  
*Grosse-Wortmann L., Roche S.L., Yoo S.-J., Seed M., Kantor P.*
- P-88 Utility of Whole-Blood Aggregation for Evaluation of Anti-Platelet Therapy in Chronic Stage of Kawasaki Disease**  
*Suzuki C., Yahata T., Hamaoka A., Fujii M., Ozawa S., Hamaoka K.*
- P-89 Complete anatomical and physiological assessment of partial anomalous pulmonary venous connection with MRI**  
*Grosse-Wortmann L., Seller N., Grant B., Yoo S*
- P-90 Quantification of left to right shunt through patent ductus arteriosus by color Doppler- Clinical and experimental studies**  
*Harling S., Jansson T., Pesonen E.*
- P-91 Tissue Doppler Imaging study in long-term follow-up of patients who underwent surgical mitral valvuloplasty in pediatric age**  
*Milanesi O., Varotto E., Biffanti R., Maschietto N., Padalino M., Vida V., Stellin G.*
- P-92 Changes of natriuretic peptide type B levels after exercise in children with congenital heart defects compared with healthy children**  
*Holmgren D., Westerlind A., Lundberg P.A., Wähländer H.*
- P-93 Assessment of ventricular function and dyssynchrony before and after stage II operation for hypoplastic left heart syndrome using 2D speckle tracking**  
*Petko C., Hoffmann U., Möller P., Kramer H.-H., Uebing A.*
- P-94 Increased left atrial performance in asymptomatic patients and ventricular analysis of diastolic function in children after ToF-Repair**  
*Koenigstein K., Hurst T., Hosse M., Hauser M., Abdul-Khaliq H.*
- P-95 Early detection of anthracycline cardiotoxicity in children with cancer using plasma levels of NT proBNP and pulsed-tissue Doppler echocardiography**  
*Atalay S., Uçar T., Tutar E., Uysal Z., Yavuz G.*
- P-96 The use of advanced imaging modalities in the management of patients with congenital heart disease – a European multicenter survey**  
*Valsangiacomo Buechel E.R., Hoesli D., Mertens L., Helbing W.A., Simpson J.M., Sieverding L., Milanesi O.*

- P-97 Added value of Real-time Three-dimensional Trans-thoracic Echocardiography in the Assessment of Congenitally Malformed Aortic valve**  
*Al-Barakati M., Anwar A.M., Nosir Y.F., Galal A.N., Chamsi-Pasha H.*
- P-98 Integrated assessment of diastolic and systolic ventricular function using diagnostic MRI-catheterization: Validation in pigs and application in a clinical pilot study**  
*Kuehne T., Schmitt B., Steendijk P., Lunze K., Ovroutski S., Falkenberg J., Rahmanzadeh P., Maarouf N., Ewert P., Berger F.*
- P-99 Use of Monoplane Intracardiac Echocardiographic Transducer as a Transesophageal Probe in Low – Weight Infants Undergoing Complex Congenital Heart Surgery: Feasibility and Effectiveness**  
*Arcidiacono C., Micheletti A., Piazza L.P., Negura D.G., Butera G., Chessa M., Frigiola A., Carminati M.*
- P-100 Comparison of Radiation Dose in Paediatric Diagnostic Cardiac Catheter and Cardiovascular CT Angiography**  
*Narayanan A., Tawil M.*
- P-101 Detection of coronary complications after coronary reimplantation surgery: first experience with multislice computer tomography in children**  
*Marini D., Defillippi C., Di Rosa G., Abbruzzese P., Agnoletti G.*
- P-102 Stiffness and Wall Motion Velocities of Abdominal Aorta Measured by Tissue Doppler Imaging in Obese Children**  
*Gurses D., Ozyurek A.R., Ulger Z., Coker M., Darcan S., Levent E.*
- P-103 Altered Biophysical Properties of the Aorta Following Kawasaki Disease**  
*Dahdah N., Fournier A., Houde C., Sandor G.*
- P-104 Surgical correction of congenital heart disease has no influence on left ventricular dyssynchrony**  
*Klitsie L., Hazekamp M.G., Gesink-Van der Veer B.J., Blom N.A., Ten Harkel A.D.J.*
- P-105 Myocardial velocities and 2-d strain in 26 healthy children and adolescents before and immediately after a triathlon**  
*Schön P., Petzuch K., Kühn A., Elmenhorst J., Röhlig Ch., Schönfelder M., Oberhoffer R., Vogt M.*
- P-106 Two Dimensional and Color Doppler Derived Systolic Strain in Children: a Comparison Study using 2 Different Ultrasound Systems and 3 Analysis Software Packages**  
*Koopman L.P., Slorach C., Manlhiot C., McCrindle B.W., Friedberg M.K., Jaeggi E.T., Mertens L.*
- P-107 Echocardiographic evaluation of right ventricle function after percutaneous balloon valvuloplasty in infants with pulmonary valve stenosis**  
*Khanenova V.A., Kurkevych A.K., Maksymenko A.V., Boyko O.P., Stogova O.V., Rudenko N.M., Yemets I.M.*
- P-108 Two Dimensional and Color Doppler Derived Radial Strain Rate in Children: a Comparison using 2 Ultrasound Systems and 3 Analysis Software Packages**  
*Koopman L.P., Slorach C., Manlhiot C., McCrindle B.W., Jaeggi E.T., Friedberg M.K., Mertens L.*
- P-109 Tissue Doppler Velocity Imaging in Children: a Comparison Between two Ultrasound Systems**  
*Koopman L.P., Slorach C., Manlhiot C., McCrindle B.W., Friedberg M.K., Mertens L., Jaeggi E.T.*
- P-110 Evaluation with Echo-Dipyridamole or supine bicycle exercise stress echocardiography to authorize physical activity without restriction in patients with a history of Kawasaki disease**  
*De Lucia V., Mazzoni A.M., Terrazzi, Lunardini A., Recla S., Spadoni I., Giusti S.*
- P-111 Left and right ventricular deformation and mechanical dyssynchrony in young patients after repair of Tetralogy of Fallot**  
*Friedberg M.F., Fernandes F.P., Roche S.L., Fackoury C., Kantor P.F.*
- P-112 Usefulness of cardiovascular magnetic resonance in children with suspected myocarditis**  
*Werner B., Piotrowska Kownacka D., Kownacki L., Wojcicka Urbanska B., Rowinski O.*
- P-113 Evaluation of Left Ventricular Force Frequency Response Using Systolic Tissue Velocities and Radial Strain in a Novel Rabbit Model of Heart Rate Dependent Contractile Remodeling**  
*Slorach C., Mertens L., Hui W., Jiang J., Gross G., Friedberg M.*
- P-114 Intraventricular Timing of Strain and Strain Rate in healthy children**  
*Laser K.T., Hauffe P., Beck C., Haas N., Kececioglu D., Körperich H.*
- P-115 Assessment of global and regional volumes by RT3DE and CMR**  
*Laser K.T., Barth P., Beck C., Haas N.A., Kececioglu D., Burchert W., Körperich H.*
- P-116 Preserved aortic elasticity in patients with Marfan syndrome during five years of follow-up**  
*Baumgartner D., Baumgartner C., Karall T, Schweigmann U, Stein J.-I.*

- P-117 Value of exercise systolic blood pressure and systolic pressure gradient in assesment of children after repair of coarctation of the aorta**  
*Djukic M., Vukomanovic G., Ilisic T., Stefanovic I., Dabetic M., Ilic S., Jovanovic I.*
- P-118 Right ventricular function assessed by Tissue Doppler imaging before and after transcatheter closure of atrial septal defect**  
*Laskari C.V., Kiaffas M.G., Tsutsinos A.I., Rammos S.*
- P-119 Echocardiographic morphological parameters for detection of the coarctation aorta in neonates**  
*Ilisic T., Ilic S., Parezanovic V., Djukic M., Vukomanovic G., Stefanovic I., Raus M., Vuličević I., Jovanovic I.*
- P-120 Strain Rate Imaging for the Evaluation of Left Ventricular Function after Patent Ductus Arteriosus Closure**  
*Ghonimy R., Adel M., Hegab M., Khairee E.*

#### Interventional cardiology

- P-121 Use of the new Amplatzer duct occluder II in comparison with Amplatzer duct occluder – single center experience**  
*Venczelova Z., Masura J., Tittel P.*
- P-122 Clinical, echocardiographic and histopathologic findings in nine patients with surgically explanted ASD/PFO devices: Do we know enough about the healing process in humans?**  
*Vogt M., Kühn A., Hörer J., Schreiber Ch., Schneider H., Foth R., Hess J., Sigler M.*
- P-123 The Italian Society of Pediatric Cardiology Registry on transcatheter Melody pulmonary valve implantation**  
*Butera G., Milanesi O., Piazza L., Donti A., Spadoni I, Giusti S, Formigari R.,Ricci M., Pongiglione G., Papa M., Pangrazi A., Carminati M.*
- P-124 Aortic coarctation associated with wall aneurysm : The role of covered stent**  
*Butera G., Heles M., Shridar A., Piazza L.,Negura D., Chessa M., Micheletti A., Arcidiacono C., Abella R., Giamberti A., Pomè G., Bussadori C., Frigiola A., Carminati M.*
- P-125 Italian Patent Foramen Ovale Survey (I.P.O.S.): early results**  
*Butera G., Sangiorgi G., Lucarelli K., Ussia G., Aprile A., Spadoni I., Onorato E., Caputi L., Benassi A., Chessa M., Ramondo A., Anzola G., Zanchetta M., Bortone A., Santoro G., Vignati G., Rigatelli G., Presbitero P., Pierli C., Varotto L., Papa M., Colombo A., Carminati M.*
- P-126 Five-year Follow-up After Balloon Pulmonary And Aortic Valvuloplasty In Benghazi Cardiac Center**  
*Feituri R, Rahuma S., Gobhaa N., Kasmi A.*
- P-127 A comparative study on validation of a novel device for percutaneous closure of atrial septal defects: Figulla ASD Occluder versus Amplatzer Septal Occluder**  
*Pac F.A., Polat T.B., Oflaz M.B., Topaloglu S., Balli S.,Cetin I.I., Kibar E., Ece I.*
- P-128 Atrial Septal Defect Occlusion by the Transcatheter Patch: Can Patch Release Time Influence the Results?**  
*Sideris E., Zanjani K., Zeinalloo A., Kalachanis M.,Coulson J., Sideris B., Pursanov M., Kumbasar D.*
- P-129 Immediate and long-term results of balloon aortic valvuloplasty of congenital valvular aortic stenosis in 98 patients**  
*Gamillscheg A., Miledler L.P., Knez I., Koestenberger M., Heinzl B., Fandl A., Finding K., Fritsch P., Nagel B.*
- P-130 Reduction of right ventricular afterload improves right ventricular function**  
*Kaestner M., Schneider K., Toussaint-Götz N., Wiebe W., Zartner P., Schneider M.B.E.*
- P-131 Percutaneous aortic valvuloplasty in patients older than 1 month with congenital aortic valve stenosis: a good alternative to surgery**  
*Corzani A., Donti A., Formigari R., Bronzetti G., Balducci A., Fabi M., Testa G., Bonvicini M., Picchio F.M.*
- P-132 Stent Expansion of Stretch Gore-Tex® Grafts in Children with Congenital Heart Lesions**  
*Gewillig M., Brown S.C., Boshoff D.E., Heying R., Gorenflo M., Rega F., Eyskens B., Meyns B.*
- P-133 Bailout stenting for critical coarctation in premature/critical/complex/early re-coarcted neonates**  
*Gewillig M., Boshoff D.E., Heying R., Eyskens B., Rega F., Meyns B., Gorenflo M.*
- P-134 Stent Implantation in Newborns an Infants: A Current Reality**  
*Ferreira Martins J.D., Costa G., Gouveia S., Parames F., Freitas I., Rebelo M., Trigo C., Pinto F.*

- P-135 Stenting of native and re-coarctation with a new chromium-cobalt stent (Andra Stent®) in children and young adults**  
*Beck C., Laser T.K., Kececioglu D., Haas N.A.*
- P-136 Monitoring unfractionated heparin during cardiac catheterization in children – results from the HEARTCAT study**  
*Kitzmüller E., Hanslik A., Karapetian H., Salzer-Muhar U., Michel-Behnke I., Male C.*
- P-137 Outcome of device closure of ASD in intermediate and long term**  
*Sadiq M., Kazmi T., Rehman A.U., Latif F., Hyder N., Qureshi S.A.*
- P-138 Our Experience of ADO2 Device Occlusion of PDA**  
*Narayanan A., Mehta C., Ladusans E., Gladman G., Misra S., Peart I.*
- P-139 Balloon angioplasty of branch pulmonary arteries following arterial switch operation for transposition of great arteries: Is it effective?**  
*Shastri A, Naqvi N, Maiya S, Magee AG*
- P-140 Electrocardiographic and Rhythm Changes Following Percutaneous Atrial Septal Defect Device Closure**  
*Hagler D.J., Johnson J.N., Marquardt M.L., Ackerman M.J., Asirvatham S.J., Reeder G.S., Cabalka A.K, Cetta F.*
- P-141 The Role of Real-Time Three-Dimensional Transoesophageal Echocardiography in Guiding Device Closure of Atrial Septal Defect in Children**  
*Chen F.L., Kuo S.M., Liao C.P., Weng C.Y.*
- P-142 Five years follow-up of stenting of aortic coarctation**  
*Brzezińska-Rajszyś G., Zubrzycka M., Rewers B., Książyk J., Jagiełłowicz D., Kościeszka A., Kansy A.*
- P-143 Transcatheter recanalization of occluded modified Blalock-Taussig shunts**  
*Rewers B., Brzezińska-Rajszyś G., Zubrzycka M., Książyk J., Kansy A., Birbach M., Zuk M.*
- P-144 Aorto-pulmonary collaterals causing complicated postoperative course after cardiac surgery – results of percutaneous treatment**  
*Zubrzycka M., Brzezińska-Rajszyś G., Rewers B., Książyk J., Kansy A., Birbach M., Ziolkowska L.*
- P-145 Occlusion of Fontan fenestrations using Amplatzer Duct Occluder II**  
*Briales C., Zunzunegui J.L., Ballesteros F., Alvarez T., Maroto E., Centeno M., Medrano C.*
- P-146 Transcatheter closure of atrial septal defects with transthoracic echocardiography**  
*Şahin M., Özkutlu S., Karagöz T., Yıldırım I., Çeliker A., Alehan D., Özer S.*
- P-147 Interventional palliation of a patient with isolated left pulmonary artery: clinical course and histopathology**  
*Koch A., Cesnjevar R., Dittrich S., Breuer C., Zink S., Glöckler M., Sigler M.*
- P-148 Long term follow-up of transcatheter closure of atrial septal defects for paradoxical embolism with the Helex Septal Occluder: a contrast-enhanced transcranial Doppler study**  
*Lunardini A., Recla S., Ait-Ali L., Chiappino D., Monteleone A., De Lucia V., Kristo I., Spadoni I.*
- P-149 Experience with hybrid pulmonary valve replacement in an acute pig model**  
*Schmitz C., Thalmann R., Merkel E., Bombien R., Akra B., Aleksieva G., Negaoie A., Fano C., Dauner M., Sodian R., Lang N., Breuer J., Neuss M., Reichart B., Kozlik-Feldmann R.*
- P-150 Right ventricular outflow tract stent implantation as a primary palliation in patients with Tetralogy of Fallot**  
*Reinhardt Z., Stumper O., Miller P., Stickley J., Viswanathan S., De Giovanni J.V.*
- P-151 A new device (Cardi-O-Fix muscular ventricular septal defect occluder) for percutaneous closure of congenital muscular ventricular septal defects: early results**  
*Akdeniz C., Sartas T., Erdem A., Odemis E., Demir F., Demir H., Celebi A.*
- P-152 Cheatham-Platinum Stents for Aortic Coarctation: Immediate and Early Results**  
*Erdem A., Celebi A., Akdeniz C., Sarıtaş T., Erol N., Demir H., Yalcin Y.*
- P-153 Transcatheter closure of congenital ventricular septal defects (vsd) with various devices and coils; early and mid-term results**  
*Celebi A, Akdeniz C., Zeybek C., Erdem A., Sarıtaş T, Demir H., Erol N., Imanov E., Yalcin Y*
- P-154 Lead removal in children and young adults with a congenital heart disease**  
*Zartner P., Wiebe W., Toussaint-Götz N., Schneider M.*
- P-155 Novel pre-mounted balloon expandable graft stent (Avanta V12) expands interventional options to treat cardio-vascular obstructions**  
*Schranz D., Jux Ch., Hagel K.-J., Bauer J., Valeske K., Akintürk H.*
- P-156 Up to 7-year Follow-up after Transcatheter Closure of Paravalvar Leaks**  
*Radtke W.A.K., Bandisode V.M., O'Murchu B.*
- P-157 Percutaneous closure of atrial septal defects in children: what are the limits?**  
*Barre E., Petit J., Losay J., Capderou A., Piot J.D., Stos B., Legendre A., Serraf A., Lambert V.*

- P-158 Haemoptysis after the Fontan procedure: Coil embolisation of aortopulmonary collaterals**  
*Ahmad Z., Lim Z., Kiesewetter C., Veldtman G., Vettukattil J.J.*
- P-159 Transcatheter closure of ventricular septal defects with the Amplatzer Duct Occluder II (ADO II)**  
*Bauch A., Reinhardt Z., Miller P., De Giovanni J.*
- P-160 Features and Concepts: Saudi Congenital Heart Defects Registry**  
*Dessouky N.*
- P-161 Cardiac Catheter Guiding Surgical Closure of Muscular VSD**  
*Zunzunegui J.L., Ballesteros F., Alvarez T., Centeno M., Camino M., Medrano C., Maroto E., Briales C., Panadero E., Greco R.*
- P-162 Midterm results of stented coarctation: A follow – up study of 90 patients**  
*Fakler U., Eicken A., Genz Th., De Pasquale-Meyer G., Hess J.*
- P-163 Interventional catheterization in the management of diffuse congenital pulmonary vein stenosis in the infants and small children**  
*kammache I., Fouilloux V., Quilici J., Cuisset T., Bonello B., Macé L., Kreitmann B., Fraisse A.*
- P-164 Percutaneous closure of atrial septal defects in patients with right ventricular outflow tract (RVOT) obstruction: indications and results**  
*Recla S., Ait-Ali L., Lunardini A., De Lucia V., Giusti S., Spadoni I.*
- P-165 Emergent use of extracorporeal membrane oxygenation during pediatric cardiac catheterization**  
*Ballesteros F., Zunzunegui J.L., Briales C., Alvarez T., Maroto E., Brochet G., Greco R.*
- P-166 The Amplatzer duct occluder type II (ADO II): a versatile device – especially outside the duct**  
*Jux C., Mebus S., Mazhari N., Hagel K, Schranz D.*
- P-167 Percutaneous right outflow tract valve implantation: when is right moment for pre-stenting?**  
*Brugada G., Kammache I., Iserin L., Fraisse A., Boudjemline Y.*
- P-168 Percutaneous right outflow tract valve implantation: substrate matters**  
*Brugada G., Kammache I., Iserin L., Fraisse A., Boudjemline Y.*
- P-169 Novel Technique to reduce the Size of a Fontan Diabolo Stent Fenestration**  
*Anderson B.W., Bhole V., Desai T., Mehta C., Stumper O.*

#### Surgery and Intensive care

- P-170 Surgical Correction of HOCM in Patients with Extreme Hypertrophy and Septal Myocardial Fibrosis**  
*Borisov K.V.*
- P-171 Operative Treatment Analysis of Patients with Anomaly Ebstein and Determination of Unfavorable Predictors for Surgical Repair**  
*Savitskaya N.V., Matusevich I.D.*
- P-172 Critical aortic valve stenosis: prognosis and influence of first intervention on outcomes**  
*Di Filippo S., D'Agata B., Henaine R., Sassolas F., Ducreux C., Ninet J., Bozio A.*
- P-173 Early measurement of plasma neutrophil gelatinase associated lipocalin (NGAL) to screen for acute renal injury after cardiac surgery**  
*Koch A., Glöckler M., Cesnjevar R., Zink S., Dittrich S.*
- P-174 Brachial artero-venous fistula in high risk patients for Fontan's operation**  
*Quarti A., Oggianu A., Cetrano E., Colaneri M., Baldinelli A., Pozzi M.*
- P-175 Secondary pulmonary valve implantation after repair of Tetralogy of Fallot. Factors influencing the incidence and timing of the reoperation**  
*Nagy Z., Wiegand G., Sieverding L., Hofbeck M., Ziemer G.*
- P-176 Telemetric Pulmonary Artery Banding Helps Growth of Hypoplastic Aortic Annulus in Children with Parallel Circulation**  
*Enodien B., Comber M., Dave H., Balmer C., Prêtre R.*
- P-177 Mid-term results of valve sparing aortic root replacement in children with Marfan or Loeys-Dietz syndrome**  
*Rozendaal L., ten Harkel A.D.J., Ottenkamp J., Koolbergen D.R., Hazekamp M.G.*
- P-178 Inhaled nitric oxide for postoperative elevated pulmonary arterial pressure after Fontan-type operations**  
*Georgiev S., Lacheva A., Pilosoff V.*
- P-179 Neurodevelopmental outcome after hybrid procedure in children with functional hypoplastic left heart syndrome**  
*Liamlahi R., Knirsch W., Bürki C., Prêtre R., Bernet V., Latal B.F., Kretschmar O.*
- P-180 Biomechanical properties and application of glutaraldehyde treated human pericardium in congenital heart surgery**  
*Ozolins V., Smits L., Sikora N., Teivane E., Bergmane I., Kasyanov V., Ozolanta I., Lācis A.*



- P-181 Valve insertion for a dysfunctional pulmonary valve secondary to a Primary Congenital Heart Repair**  
*Dave H, Comber M, Balmer C, Enodien B, Nikolaou G, Trigotrindade P, Pretre R*
- P-182 Risk factors for early morbidity after extracardiac Fontan operation**  
*Ovroutski S., Miera O., Alexi-Meskishvili V., Hübler M., Ewert P., Hetzer R., Berger F.*
- P-183 Medium-term outcome following Ross/Ross-Konno operation in very young children**  
*Maiya S., Naqvi N., Damda F., Chubb H., Moledina S., Sethia B., Shore D., Slavik Z.*
- P-184 The Use of Arginine Vasopressin in Postoperative Norwood Patients**  
*Burton G., Goot B., da Cruz E., Kaufman J.*
- P-185 Early postoperative outcomes following surgical repair of complete atrio-ventricular septal defects (CAVSD): Is trisomy 21 a risk factor?**  
*Desai A., Maiya S., Comitis G., Vyas D., Slavik Z., La Rovere J.*
- P-186 Tetralogy of Fallot: changing practice in perioperative care**  
*Desai A., Sainath R., Davies L., Slavik Z., Halley G.*
- 20:00 Gala Dinner**

**Saturday, May 29, 2010**

- 09:00–10:30 Joint session WGs Congenital Heart Surgery and Interventional Cardiology Patients matter more than doctor's ego**  
*Chair: Caroline Ovaert (Brussels, BE), Bohdan Maruszewski (Warsaw, PL)*
- Perimembranous VSD occlusion. Is device closure as good as surgery?  
*Mario Carminati*
- PFM-coil is less rigid than other devices  
*Trong Phi Le*
- Leave perimembranous VSDs to the surgeon  
*Juan Comas*
- Palliative pulmonary blood flow: early and late which options are available to surgeons for shunts  
*Pascal Vouhe*
- Neonatal duct stenting is better than surgical shunts  
*Dietmar Schranz*
- Interventionalist can deal with small shunts to keep pace with growth of patient  
*Marc Gewillig*
- 09:00–10:30 Abstract session 10 End stage heart and lung disease**
- O10-1 Subcutaneous treprostinil in pediatric pulmonary arterial hypertension**  
*Lévy M., Bajolle F., Szezepanski I., Bonnet D.*

**44th Annual Meeting of the AEPC**

- O10-2 Heart Transplantation in GUCH Population**  
*Vignati G., Ribera E., Bruschi G., Gagliardone M.P., Montorsi E., Aresta F., Paino R., Marianeschi S.M., Corato A., Frigerio M., Iorio F.S., Martinelli L., Santoro F.*
- O10-3 Transplant coronary artery disease is diagnosed later and is more severe in pediatric heart recipients transplanted during infancy**  
*Tissot C., Pietra B.A., Ivy D.D., Campbell D.N., Mitchell M.B., Miyamoto S.D.*
- O10-4 Survival and follow-up after cardiac transplantation for congenital heart diseases**  
*Guillaume M.P., Timmermans T., Van Caeneghem O., Poncelet A., Gurné O., Carbonez K., Sluysmans T.*
- O10-5 More than ten years after heart transplantation in children**  
*Di Filippo S., Ducreux C., Henaine R., Boissonnat P., Sebbag L., Roussoulières A., Gouton M., Ninet J., Sassolas F., Bozio A.*
- O10-6 Specific vasodilator therapy in children with severe pulmonary hypertension**  
*Alehan D., S-ahin M., Yıldırım I., Karagöz T., Özer S, Özkutlu S.*
- O10-7 Neurocognitive deficits in children requiring heart transplantation in infancy**  
*Logeswaran T., Behnke-Hall, Bauer J., Akintürk H., Schranz D., Hahn A.*
- 10:30–11:00 Coffee, Posters, Exhibition**
- 11:00–12:30 Task force GUCH**
- 11:00–12:30 WG Interventional Successes and failures in the cath lab**
- 12:30–13:00 Closing session**  
*Chair: Maria del Mar (Granada, Spain), Shakeel Qureshi (London, UK)*

