

November  
1996

The Journal of

# Laryngology & Otology

Founded in 1887  
by Morrell Mackenzie & Norris Walforden

Edited by Neil Weir

Assistant Editors  
Carol Wengraf,  
Richard Ramsden,  
David Proops,  
Valerie Lund,  
Henry Grant,  
Andrew Jones,  
Guy Kenyon,  
Michael Rothera,  
Martin Bailey,  
Liam Flood,  
Patrick Bradley &  
Nick Jones

Emeritus Advisor  
in Pathology  
Imrich Friedmann

Advisors in Pathology  
Brian Manners,  
Christopher Milroy &  
Lesley Smallman

Advisor in Audiology  
Linda Luxon

Advisors in Radiology  
Glyn Lloyd &  
Peter Phelps

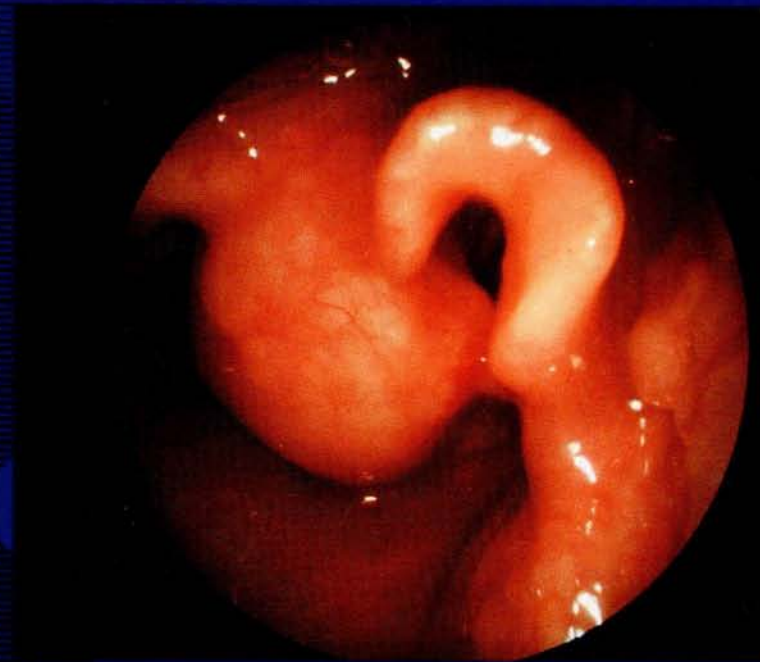
Advisors in Statistics  
Anthony Hughes,  
Peter Kelly & Janine Gray

Production Editors  
Gillian Goldfarb &  
Jennifer Almond

Vol

110

No 11



features:

High tracheostomy and other errors  
– revisited

Surgical removal of the extraosseous  
portion of the endolymphatic sac in  
Menière's disease

Olfactory neural tumours – the role  
of external beam radiotherapy

The developing role of a paediatric  
voice clinic

An audit of the cochlear implant  
service in Manchester



## NEUROSIGN® 100



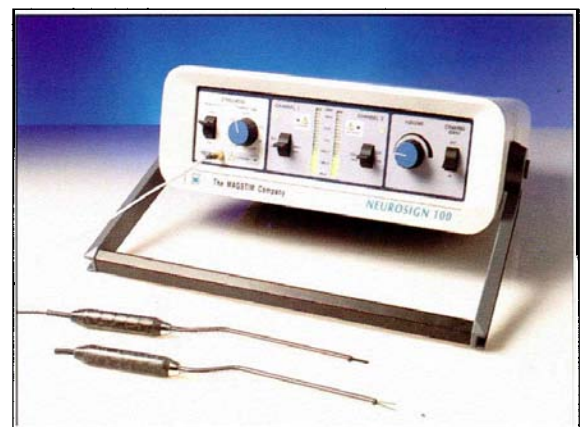
### *Help to Preserve that Voice and Smile using Laryngeal and Facial Nerve Monitoring*

*The Neurosign 100 is widely used in many countries to monitor the facial nerve during skull-base and head and neck surgery. It has helped many surgeons in their efforts to improve the outcome for patients, and as such has been a contributing factor to the statistical improvement in facial nerve preservation.*

Thyroid surgery carries a small risk to injury to the recurrent laryngeal nerves, although such injury can be devastating to someone who uses their voice professionally - teachers, singers, actors, doctors! In the event of revision surgery, not uncommon in these cases after a few years, the risk is greater. Use the Neurosign 100 to help protect these nerves.

Use the Neurosign 100 to monitor the facial nerve during acoustic neuroma resection, middle ear surgery, mastoidectomy, parotidectomy and submandibular gland removal.

For further information or to arrange a demonstration, please contact your local distributor or the Company.



## Neurosign® 100

**THE MAGSTIM CO. LTD**  
Spring Gardens, Whitland,  
Carmarthenshire SA34 0HR, U.K.  
Phone: +44 (0) 1994 240798  
Fax: +44 (0) 1994 240061

**THE MAGSTIM CO. BENELUX**  
BC Regio Aalst, Industrielaan, 3e Indust-  
riezone, 9320 Erembodegem, Belgium  
Phone: +32 (0) 53 85 35 11  
Fax: +32 (0) 53 83 33 82

**TEKNO SURGICAL LTD**  
Fisherman's Wharf  
Ringsend, Dublin 4  
Tel: 01 6672 871  
Fax: 01 6672 873

**MDM MEDICAL**  
Office Suite 3, Homestead Farm  
Stockbridge, Hampshire SO20 6LG  
Tel: (01264) 811080  
Fax: (01264) 811090

**EDEN MEDICAL**  
Unit 2C, West Telferton  
Edinburgh EH7 6UL  
Tel: (0131) 669 8385  
Fax: (0131) 657 4013.



# The Journal of Laryngology and Otology

(Founded in 1887 by MORELL MACKENZIE and NORRIS WOLFENDEN)

Edited by NEIL WEIR

Assistant Editors CAROL WENGRAF, RICHARD RAMSDEN, DAVID PROOPS, VALERIE LUND, HENRY GRANT, ANDREW JONES, GUY KENYON, MICHAEL ROTHERA, MARTIN BAILEY, LIAM FLOOD, PATRICK BRADLEY & NICK JONES

Production Editors GILLIAN GOLDFARB & JENNIFER ALMOND

## INSTRUCTIONS FOR AUTHORS

1. Original articles which have not been published elsewhere are invited and should be sent to the Editor. They are considered for publication on the understanding that they are contributed to this *Journal* solely. Reproduction elsewhere in whole or in part, is not permitted without the previous written consent of the Author and Editor and the customary acknowledgement must be made. Normally an original main article should not exceed 7500 words.

Longer articles or theses will be considered for publication as *Supplements*, at the expense of the authors or their employing authorities.

2. Manuscripts should be **typewritten in duplicate** on one side of the paper only (A4 297 x 210 mm) and double spaced, with wide margins.

Begin each component on a new page in the following sequence: title page, abstract, text, acknowledgements, references, tables and legends.

(a) **Title page**—Titles should be short with names of the authors, higher degrees only. Details of the departments in which the authors work should be put lower down. An address for correspondence should be supplied together with the author who should receive this; this will ultimately appear beneath the list of references. Any change of address should be notified. If the paper was presented at a meeting, the details of this must be given and will be inserted at the bottom of the first page of printed script.

(b) **Abstract**—This should contain not more than 150 words and include a statement of the problem, the method of study, results and conclusions; a 'summary' section should **not** be included in the main manuscript. **No paper will be accepted without an abstract.**

(c) **Key Words**—Only those appearing as Medical Subject Headings (MeSH) in the supplement to the *Index Medicus* may be used; where no appropriate word(s) are listed those dictated by common sense/usage should be supplied.

(d) **Text**—Suggested outline—(1) introduction, (2) materials and methods, (3) results, (4) discussion, (5) conclusion.

(e) **Tables** are adjuncts to the text and should not repeat material already presented.

(f) **Illustrations**—Two sets of illustrations, one with each copy of the manuscript, must be submitted and all authors should remember that the single column width is 80mm. One set of illustrations should, therefore, not exceed this width and they should ensure that the essential features are illustrated within this dimension.

Coloured illustrations will be charged to authors, unless a special grant is authorized by the Editor.

Written permission from the publisher must be provided to the *Journal* in order to republish material with copyright elsewhere and also from the senior author where necessary. Consent to be obtained from a patient if a photograph of their face is to be reproduced.

(g) **Measurements** must be in metric units, with *Système Internationale* (SI) equivalents given in parentheses.

(h) **References**—For *Journal* articles, The Harvard system of recording references should be used, e.g. Green, C. and Brown, D. (1951) The tonsil problem. *Journal of Laryngology and Otology* 65: 33–38. A paper written by more than two authors should be abbreviated in the text, e.g. Green *et al.* (1951), but **all** the authors should be given in the list of references. The titles of all *Journals* should be given without abbreviation. **References should be listed in alphabetical order**; use of the Vancouver system will **not** be accepted.

For single-author books, the following style should be used: Green, C. (1951) *The tonsil problem*, 2nd Edition. vol. 1, Headley Brothers Ltd., Ashford, Kent, pp 33–38.

For papers in multi-books with one or more editors, the reference should include the title of the chapter and the names of the editors, together with the number of the edition as e.g. Brown, D. (1951) Examination of the ear. In *Diseases of the Ear, Nose and Throat*. 2nd Edition. (White, A., Black, B., eds.), Headley Brothers Ltd., Ashford, Kent, pp 33–38.

It is most important that authors should verify personally the accuracy of every reference before submitting a paper for publication. The names of authors cited in the References should be given in alphabetical order.

(i) **Drugs**—The proper names of drugs must be used. One reference can be made to the brand name if it is felt to be important to the study.

(j) **Financial disclosures**—In the submission letter to the Editor, the authors must list all affiliations with or financial involvement in, organizations or entities with a direct financial interest in the subject matter or material of the research discussed in the manuscript.

(k) **Declaration**. Each manuscript must be accompanied by a letter of declaration to be signed by each author to confirm that they have seen, read and approve the contribution bearing their name.

(l) **Rejections**—All manuscripts which are rejected will no longer be returned to the authors. Those submitting papers should, therefore, ensure that they retain at least one copy and the reference numbers, if any, of the illustrations. The only exception to this will be those manuscripts with colour illustrations which will be returned automatically by Surface Mail.

(m) **Facsimile (FAX)**—All authors should send a Facsimile number whenever possible to speed communication; this particularly applies to those outside the United Kingdom. Manuscripts with no visual illustrations (X-rays/pathology) may be sent by facsimile.

3. Page proofs are sent to authors for corrections, which should be kept to a minimum; they must be clearly marked, and no extra matter added. Proofs should be returned within 5 days.

4. Orders for reprints must be sent when returning page proofs, and for this purpose special forms are supplied.

5. Editorial communications may be addressed to The Editor, *Journal of Laryngology and Otology*, c/o Headley Brothers Ltd., The Invicta Press, Ashford, Kent TN24 8HH, or sent by FAX (01483 451874).

6. The annual subscription is £100.00 Institutions & Libraries US\$230.00; £85.00 Individuals US\$195.50; £45.00 Registrars, Residents and Interns. (Those in training should submit a certificate from The Head of the Department giving details of their appointment; those who qualify must supply their home address for mailing direct). Claims to be made for missing issues within 6 months of each publication date.

7. Single copies of current or back numbers (when available) will be on sale at £12.00 each (including postage).

8. SUPPLEMENTS published at 'irregular' intervals with subscription, available separately on request.

9. All subscriptions, advertising and business communications should be sent to the publishers, or subscription agents.

## Instructions for Occasional Articles

**Review Articles.** Articles of this type, preferably not exceeding 3,000 words will be considered but the author(s) are expected to be a recognized authority on the topic and have carried out work of their own in the relevant field.

**Historical Articles.** Articles of this type are generally encouraged, but it is obvious that they have to provide some new information or interpretation, whether it be about a well-known person or for example an instrument associated with him, but those from within a Hospital's own department who have made a hitherto less well-known contribution would be welcome.

**Audit Articles.** Articles should be of general audit interest—not specifically departmental. It should always be demonstrated that the 'audit cycle' has been completed.

**'Silence in Court.'** Articles on medicolegal topics are welcome but a preliminary letter written beforehand is requested to ensure that the contribution would be appropriate.

**Short Communications.** This feature will be used on an occasional basis. Examples of material suitable for inclusion under this title would be, for example, a piece of work which was of clinical interest but had failed to produce findings which were of statistical significance; where an investigative technique has been applied to an allied field, not warranting a further in-depth description of its earlier application and methodology.

**Radiology in Focus.** Short reports on cases in which the radiology has been crucial in the making of the diagnosis or the management of a particular case now appear on a monthly or bimonthly basis. This spot is to encourage clinicians and radiologists to produce material of particular interest in the specialty and to encourage co-operation in this field. Only presentations with first-class illustrations can be accepted and these must emphasize a problem of unusual clinical interest.

**Pathology in Focus.** Articles which are of pathological interest with particular emphasis on the way the diagnosis was achieved now appear on a monthly or bimonthly basis. It is hoped that clinicians will involve their pathologists in these reports, and all illustrations must be of first-class quality. Where a department, particularly those overseas, may not have such specialized facilities. It may be possible, if a block or several unstained sections are provided for our Adviser to produce or supplement the illustration submitted. Only contributions of particular pathological interest will be accepted.

**Oncology in Focus.** This new feature is for papers concerned with oncological treatment and investigation.

**Letters to the Editor.** This feature has been re-introduced to give those who wish to comment about a paper previously published within the *Journal*, an opportunity to express their views. Wherever possible, the original author is asked to add his further comment, thereby adding to the value of the contribution. Such letters should be sent as soon as possible after publication of each month's issue of the *Journal* in the hope of including them early thereafter.

'Mini-papers', such as those which appear in the *British Medical Journal*, *Lancet*, or *New England Journal of Medicine*, will not be acceptable except on the rare occasion that they bring information of immediate interest to the reader.

HEADLEY BROTHERS LTD, THE INVICTA PRESS, ASHFORD, KENT

© *Journal of Laryngology and Otology Ltd.*, 1996 ISSN 0022-2151

Periodicals Postage Paid at Rahway N.J.

Postmaster: Send address corrections to The Journal of Laryngology and Otology, c/o Mercury

Airfreight International Ltd. Inc., 2323 Randolph Avenue, Avenel, N.J. 07001. Frequency of Publication: Monthly.

# LESS THAN EIGHT POUNDS PER MONTH FOR YOUR OWN COPY OF THE JLO



- At only £85 for 12 copies it works out at £7.08 per copy.
- Subscriptions for the 1996 volume are only available for another two months. In 1997, the volume will only be available as back copies (£13 each).
- All supplements included.
- Postage included.
- The 1997 volume can be subscribed to now at the same low price of £85 for individuals.

☎ To subscribe today call 01233 623131 with your credit card details.

## The Journal of Laryngology and Otology



### Journal of Laryngology and Otology

Headley Brothers Ltd, The Invicta Press, Ashford, Kent TN24 8HH, UK

Tel: 01233 623131 Fax: 01233 612345 Email: Publishing@Headley.co.uk

Please enter my subscription for

#### Individual

- 1996 – £85 (U.S.\$195.50)       1997 – £85 (U.S.\$195.50)  
 1996 & 1997 – £170 (U.S.\$391)

#### Registrars / Residents / Interns

- 1996 – £45 (U.S.\$100)       1997 – £45 (U.S.\$100)  
 1996 & 1997 – £90 (U.S.\$200)

Name: \_\_\_\_\_

Address: \_\_\_\_\_

Postcode: \_\_\_\_\_

Payment to Journal of Laryngology and Otology by cheques in Sterling drawn on a London bank or U.S. dollars drawn on a U.S. bank.

- Bill me  
 I enclose my cheque for £ \_\_\_\_\_ made payable to The Journal of Laryngology & Otology  
 Please charge £ \_\_\_\_\_ to my  
 Mastercard     Visa     Access     Eurocard  
 Account Number 

--	--	--	--	--	--	--	--	--	--	--	--	--	--	--	--	--	--	--	--

Card Expiry Date \_\_\_\_\_

Signature \_\_\_\_\_ Date \_\_\_\_\_

Please allow up to 30 days for your order to be processed.

### **MONEY BACK GUARANTEE**

The Journal of Laryngology and Otology will send you a full refund on the unexpired part of your subscription should you decide you do not wish to continue your subscription.

NOV 96



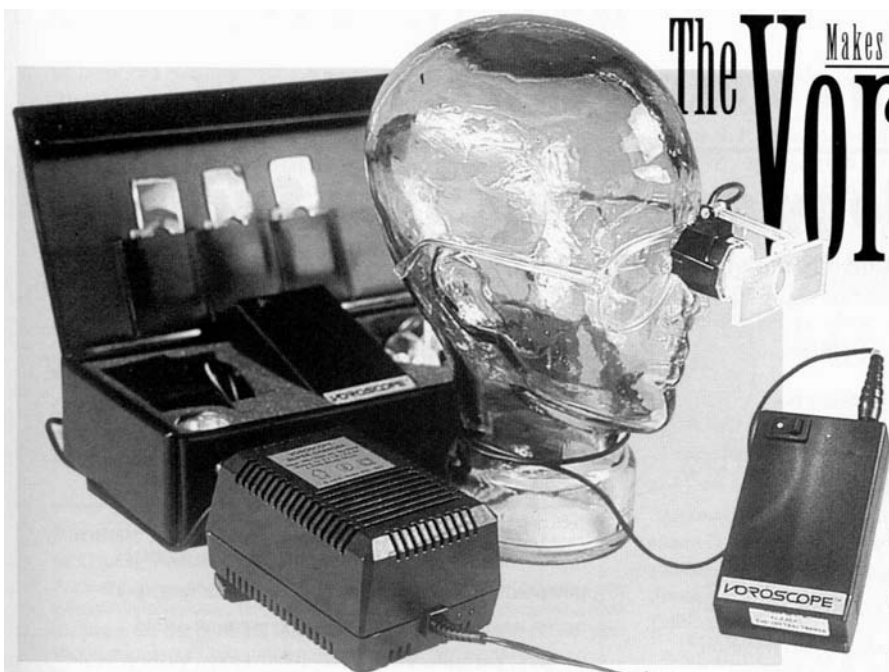
For information on the latest developments in

- ACOUSTIC RHINOMETRY
- RHINOMANOMETRY
- CALIBRATION EQUIPMENT AND ACCESSORIES

contact **Eric Greig** of **G M Instruments**

Unit 6, Ashgrove Road,  
Kilwinning, KA13 6PU,  
Scotland, UK  
tel 01294 554664  
fax 01294 551154

gm instruments Ltd



Makes light of those little problem areas

# The Voroscope Coaxial

## GARTH JESSAMINE HEALTH CARE

Unit 5, The Courtyard, Matthewsgreen Farm,  
Matthewsgreen Road, Wokingham,  
Berkshire, RG41 1JX

- ❖ Availability in Either Black or White.
- ❖ Ideal for use in Theatre, Clinic, Ward Consulting Room, Emergency and Domiciliary Call

- ❖ Eye-Aligned Illumination of 12,000 LUX at only 85g.
- ❖ Belt Clip Battery and Complete Mobility.
- ❖ Continuous Usage Capability.
- ❖ Variable Magnification of X1.5, X1.75 and X2.25
- ❖ Eye Strain and Fatigue Relief.
- ❖ Low Cost and Convenience.
- ❖ Prescription Lenses if Required.

Telephone: (01734) 786916 Fax: (01734) 774064



### International Workshops

## On Tissue-Integrated Implants for Bone Anchored Hearing Amplifier (BAHA) and Craniofacial Rehabilitation

by the Unit for Craniofacial Implants  
Department of Otolaryngology, Sahlgren's Hospital  
University of Göteborg, Sweden

January 30-31, 1997

October 9-10, 1997

These two-day workshops will include:

- Principle aspects of osseointegration
- Scientific background
- Practical training for the surgical procedure
- Live surgery with participants in OR
- Patient demonstrations
- The Bone Anchored Hearing Amplifier
- Laboratory procedures for craniofacial prosthesis

Language: English

**Workshop Directors:** Anders Tjellström, M.D., Ph.D., Gösta Granström, M.D., D.S., Ph.D. and Kerstin Bergström, CDT.

**For further information please contact:**  
Anders Tjellström, M.D., Ph.D.

Department of Otolaryngology, Sahlgren's Hospital,  
University of Göteborg, S-413 45 Göteborg, Sweden.  
Tel. +46 31 603504. Fax +46 31 416734

Ad 021896/09



## EUROPEAN ACADEMY OF FACIAL PLASTIC SURGERY

c/o B.A.O. - H.N.S. • The Royal College of Surgeons of England  
35-43 Lincoln's Inn Fields • London WC2A 3PN • U.K.  
Tel: 0171 - 831 - 3916 • Fax: 0171 - 404 - 4200

## FELLOWSHIP IN FACIAL PLASTIC SURGERY

THE EUROPEAN ACADEMY OF FACIAL PLASTIC SURGERY

invites applications from suitably qualified individuals for a **Fellowship in Facial Plastic Surgery** tenable for up to six months during 1997.

Applicants should be medically qualified and at the senior trainee or junior specialist levels. They should have demonstrated a particular interest in facial surgery appropriate to their level of training.

The Fellowship will be held in several European centres which will be chosen according to the successful candidate's particular interests.

The Fellow will be paid an honorarium but will be essentially self-funding.

Letters of application with *curriculum vitae* and the names and addresses of two referees should be sent to

Mr M. P. Stearns FRCS, Honorary Secretary  
European Academy of Facial Plastic Surgery  
c/o BAO-HNS, The Royal College of Surgeons  
35-43 Lincoln's Inn Fields, London WC2A 3PN

**BEFORE THE END OF JANUARY 1997**

# Neuromonitoring in Otolaryngology and Skull Base Surgery

**Guests of Honour**  
**Professor Aage Møller,**  
**University of Pittsburg, U.S.A.**

**Professor Sir Donald Harrison,**  
**London.**

### International Guest Faculty

A. Bell (London), G. Brookes (London), A. Cheesman, (London),  
H. Coakham (Bristol), B. Frayse (Toulouse), M. Gleeson (London),  
T. Lenarz (Hannover), T. Lesser (Liverpool), D. Moffat (Cambridge),  
A. Moore (London), R. Ramsden (Manchester), I. Sabin (London),  
A. Strong (London), E. Stennert (Cologne), A. Uziel (Montpellier);  
D. Wilkins (Plymouth), J. Birchall, R. Downes, M. Ferguson,  
C. Garnham, N. Jones, S. Mason, J. McGlashan, G. O'Donoghue,  
I. Robertson, K. Robinson, P. Smith (Nottingham).

### Further Details:

Dianne Rooksby  
Centre for Continuing Professional Development,  
University of Nottingham, University Park,  
Nottingham, NG7 2RD, U.K.  
Tel: +44 115 9513763 Fax: +44 115 9513722  
e mail: dianne.rooksby@nottingham.ac.uk



Royal Society of Medicine,  
London

Friday, 21 February 1997

### Main Topics

Neurophysiological principles, acoustic tumours,  
facial nerve monitoring, neuroanaesthesia, auditory  
potentials, lower cranial nerves, recurrent laryngeal  
nerve, nasal and orbital surgery tympanomastoid  
surgery, parotidectomy, cost-effectiveness, medico-legal  
aspects, practical demonstration.

### Course Organiser

G.M. O'Donoghue,  
Skull Base Group, Department of Surgery,  
University Hospital, Nottingham.

**Course Fee : £95.00**

**CME Approval : 6 credits**



# Laryngology & Otology Publications

Available from the Publishers and from Agents throughout the world.

Prices include postage and packing.

## The Journal of Laryngology and Otology

Edited by Neil Weir

A leading international journal, published monthly and containing original scientific articles and clinical records in all fields of Otology, Rhinology and Laryngology. Including occasional supplements. Founded in 1886.

Annual subscription for 1996 (calendar year): £100.00 Institution, £85.00 Individual, Students rate £45.00.

ISSN 0022 2151

## Supplements still available separately.

### The ENT Surgeon looks at the Orbit

by D. F. N. Harrison

This supplement records in some detail Professor Harrison's 'personal experience over a period of 20 years dealing with a wide variety of clinical conditions in which entry into the orbit was a desirable or essential part of treatment'.

Pp 42 Printed 1980

Retail £4.00 Agents £3.50 (US\$8.00 Agents \$7.00)

### 20 Years Experience with Homografts in Ear Surgery

by Christian Betow

The author, a professor of Otolaryngology in West Berlin, gives a full account of his pioneering development of homograft materials in reconstructive surgery of the middle ear.

Pp 28 Printed 1982

Retail £4.00 Agents £3.50 (US\$8.00 Agents \$7.00)

### Experimental and Clinical Studies in Otitis Media with Effusion

by Jamsheed A. Khan

An experimental and clinical study on the effects of Carbocisteine on fluid in the middle ear.

Pp 28 Printed 1983

Retail £4.00 Agents £3.50 (US\$8.00 Agents \$7.00)

### Proceedings of the Sixth British Academic Conference in Otolaryngology

Edited by John Ballantyne and John Booth

Pp 134 Printed 1983

Retail £5.00 Agents £4.50 (US\$10.00 Agents \$7.50)

### Second International Tinnitus Seminar

Chairman: Abraham Shulman

A comprehensive study of the problems and treatment of tinnitus.

Pp 323 Printed 1984

Retail £20.00 Agents £17.50 (US\$40.00 Agents \$35.00)

### Forensic Audiology

by Chuang Wei Ping

A clear concise and practical guide to industrial hearing damage by a barrister/physician. This is an unusual and highly specialised aide memoire for the personal injuries practitioner, well illustrated with recent case law. A commendable enterprise by the author.

Pp 57 Printed 1986

Retail £7.00 Agents £6.12 (US\$14.00 Agents \$12.25)

### The Acute Orbit

Preseptal (Periorbital) cellulitis subperiosteal abscess and orbital cellulitis due to sinusitis.

by J. R. Moloney, N. J. Badham and A. McRae

Pp 18 Printed 1987

Retail £7.00 Agents £6.12 (US\$14.00 Agents \$12.25)

### Nasal Mast Cells: A Preliminary Report on their Ultrastructure

by A. B. Drake-Lee, F.R.C.S.

The ultrastructural morphology of mast cells in the nose and the adenoids are compared. Normal cells have a very varied morphology with electron dense granules which have scrolls occasionally. Cells from patients with perennial allergic rhinitis show variable degranulation in all areas examined. Few cells were seen in the surface epithelium. Cells from the adenoids had different degrees of degranulation which suggests that mast cell reactions are not a constant feature.

Pp 17 Printed 1987

Retail £10.00 Agents £8.75 (US\$20.00 Agents \$17.50)

### Surgical Anatomy of Structures Adjacent to the Thyroid Apex and Post-operative Voice Change (A Review Including Dissection)

by K. L. Yerzingatsian, F.R.C.S.

Pp 13 Printed 1987

Retail £10.00 Agents £8.75 (US\$20.00 Agents \$17.50)

### Inferior Meatal Anstrostomy Fundamental Considerations of Design and Function

by Valerie Joan Lund, M.S., F.R.C.S.

Pp 18 (Contains 12 x 4 colour illustrations) Printed 1988

Retail £15.00 Agents £13.12 (US\$30.00 Agents \$26.25)

### Surgical Management of the Discharging Mastoid Cavity

by R. P. Mills, M.Phil., F.R.C.S.

Pp 6 Printed 1988

Retail £10.00 Agents £8.75 (US\$20.00 Agents \$17.50)

### Acquired Subglottic Stenosis

by John M. Graham, F.R.C.S.

Pp 48 Printed 1988

Retail £12.00 Agents £10.50 (US\$24.00 Agents \$21.00)

### The University College Hospital/Royal National Institute for the Deaf Cochlear Implant Programme

Pp 57 Printed 1989

Retail £15.00 (US\$30.00) Agents £13.12 (US\$26.25)

### Place-pitch and vowel-pitch comparisons in cochlear implant patients using the Melbourne-Nucleus cochlear implant

by Charles K. Pauka

Pp 31 Printed 1989

Retail £12.00 (US\$24.00) Agents £10.50 (US\$21.00)

### The Scottish Tonsillectomy Audit

by R. L. Blair, W. S. McKerrow, N. W. Carter and A. Fenton

Pp 24 Printed August 1996

Retail £12.00 (US\$24.00) Agents £10.50 (US\$21.00)



# The Royal Marsden NHS Trust

## Rehabilitation in Laryngeal Cancer



Unit of the Royal Marsden Hospital in conjunction with present a two day course on aspects of rehabilitation aryngopharyngeal carcinoma.

s lectures, interactive video demonstration of surgical irs on aspects of swallowing and voice restoration. The head and Neck and reconstruction surgeons, speech involved in the management and rehabilitation of laryngectomy patients.

Course

Organisers:

Mr Peter H Rhys Evans and Professor Eric Blom

Date:

14–15 November 1996

Venue:

The Education and Conference Centre  
The Royal Marsden Hospital  
London SW3 6JJ

Registration:

Consultant	£250
Consultant/Speech Therapist Team	£265
Speech Therapist/Nurse	£100
Trainee Registrar	£150

Further details of programme and (registration) application forms from:

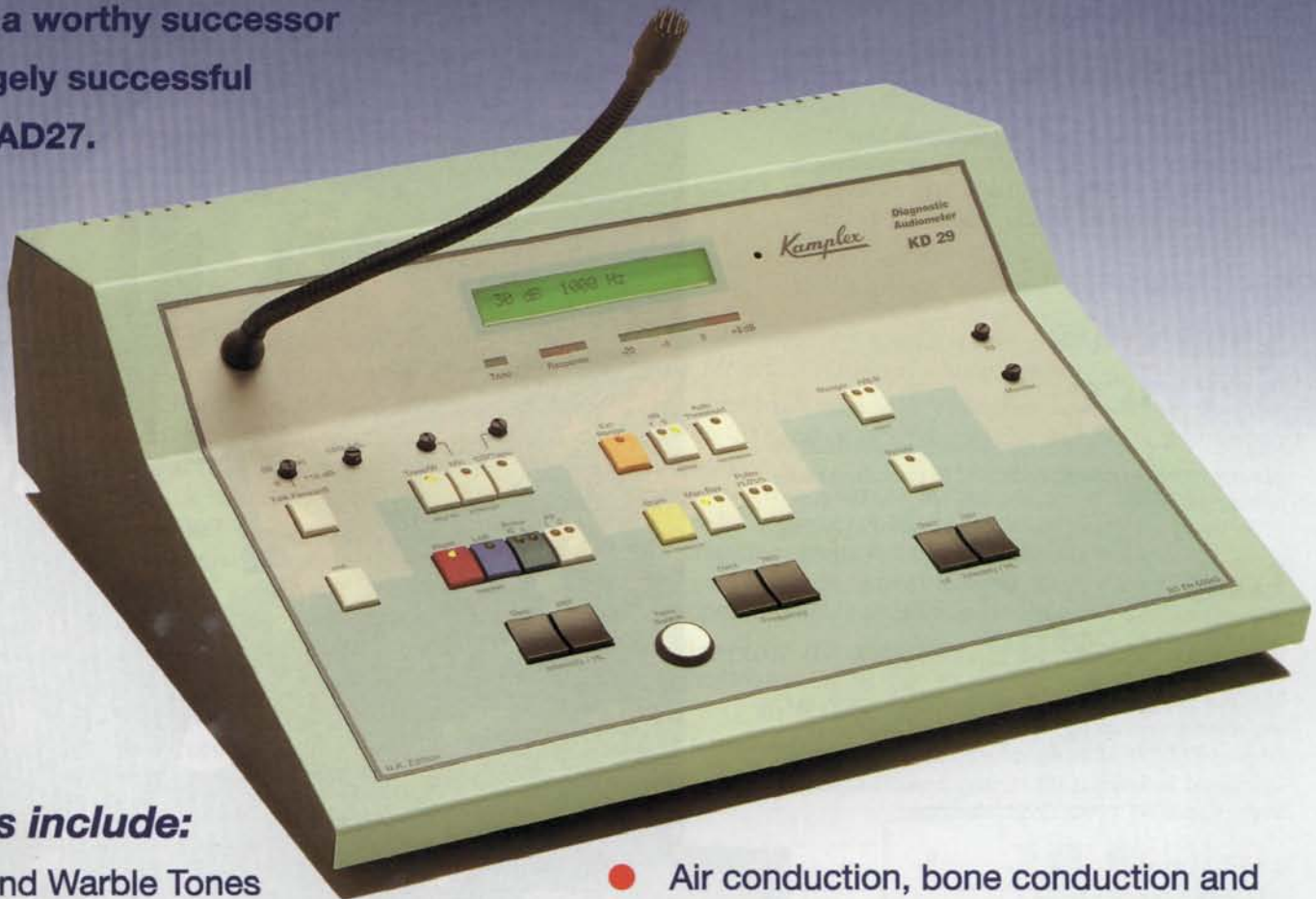
Mr P H Rhys Evans  
The Head and Neck Unit  
The Royal Marsden Hospital  
Fulham Road, London SW3 6JJ  
Tel: 0171-352 8171 ext 2731 Fax: 0171-351 2191



# *Kamplex* **KD29**

## **Diagnostic Audiometer**

The universally well received 'K' Series continues with the release of the **Kamplex KD29 Advanced Diagnostic Audiometer** specifically designed and manufactured for the UK. The attractive new front panel layout combined with improved display and extended features make the KD29 a worthy successor to the hugely successful **Kamplex AD27**.



### **Features include:**

- Pure and Warble Tones
- Stenger and ABLB testing
- Binaural speech facility
- Automatic selection of speech or NB masking
- Full speech testing via gooseneck microphone or CD/tape inputs
- Accurate push button control
- Air conduction, bone conduction and free field outputs
- Automatic threshold facility with results storage
- 1 or 5dB step attenuator
- Integral monitor loudspeaker
- Non-volatile memory calibration
- Optional carrying case

**Contact our Instrument Division for Priority Demonstration by your P.C.Werth Regional Manager**

**Exclusively from**  
**P.C.WERTH LTD**

Audiology House, 45 Nightingale Lane, London SW12 8SP

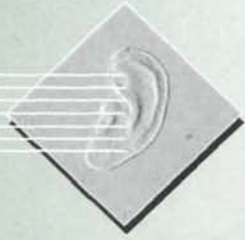
Instrument Division Direct Line: (0181) 675 5157

Telephone: (0181) 675 5157 Fax: (0181) 675 1577

<https://doi.org/10.1017/S0022278X18135687> Published online by Cambridge University Press

# High Rate COMBI 40+

The high-performance  
cochlear implant



## TWENTY YEARS Experience

For over twenty years MED-EL scientists have developed cochlear implant technology, resulting in the New High Speed COMBI 40+. The COMBI 40+ is a repackaging of the highly reliable COMBI 40 implant system.

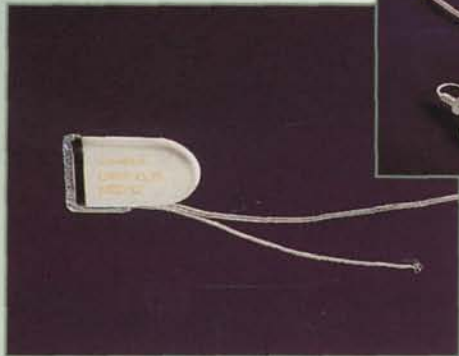
## UNPARALLELED Service

MED-EL is a European company with six subsidiaries and nine service centres, dedicated to providing excellent local service.

## FASTER Processing

The high speed COMBI 40+ marks another significant step towards optimizing cochlear implant technology. With over 18,000 pulses per second, the fast Continuous Interleaved Sampling (CIS) strategy provides superior levels of open-set speech understanding.

- B.T.E. Upgradable
- Accepts Future Strategies
- Miniaturized Implant
- MRI Compatible
- Deep Insertion



*Speeding  
towards  
natural  
sound*



# MED-EL

MED-EL UK Limited  
Bridge Mills • Huddersfield Road • Holmfirth • HD7 2TW • UK  
Tel: 014 84 / 68 62 23 • Fax: 014 84 / 68 60 56

MED-EL Headquarters  
Fürstenweg 77a • A-6020 Innsbruck • Austria  
Tel: +43-512 / 28 88 89 • Fax: +43-512 / 29 33 81

MED-EL Vienna  
Währinger Strasse 6-8 / 4 / 17 • A-1090 Wien • Austria  
Tel: +43-222 / 31 72 400 • Fax: +43-222 / 31 72 4004

MED-EL Deutschland GmbH  
Truhenseweg 2 • D-82319 Starnberg • Germany  
Tel: +49-8151 / 77 030 • Fax: +49-8151 / 77 03 23

MED-EL Corporation  
236 Holland Str. 2 • Somerville • MA 02144 • USA  
Tel: +1-617 / 623 3739 • Fax: +1-617 / 623 3751

MED-EL Latin America  
Sarmiento 212 • Buenos Aires • Argentina  
Tel: +54-1 / 3452704(05) • Fax: +54-1 / 3340166