

JOURNAL OF MENTAL SCIENCE.

Asylum Reports have been received for 1914-15 from those marked with an asterisk:—*English and Welsh County*.—Beds, Berks, Bucks, Cambridge, Carmarthen,* Chester, Chester (Parkside), Cornwall, Cumberland, Denbigh, Derby, Devon, Dorset,* Durham, Essex* (Brentwood), (Colchester),* Glamorgan,* Gloucester, Hants,* Isle of Wight, Isle of Man, Hereford, Hertford, Kent,* Lancashire (Lancaster), (Rainhill), (Prestwich),* (Whittingham), (Winwick), Leicester, Lincoln (Kesteven), (Bracebridge), London County, London City,* Middlesex, Monmouth,* Norfolk, Northampton, Northumberland,* Nottingham, Oxford, Salop,* Somerset (Wells), (Taunton), Stafford (Stafford),* (Buratwood),* (Cheddleton),* Suffolk, Surrey (Brookwood), (Netherne), Sussex (East),* (Chichester), Warwick, Wilts, Worcester (Powick),* (Barnsley Hall), Yorkshire (Wakefield),* (Wadsley), (Menstone), (Clifton), (Beverley), (Storches Hall). *Borough*.—Birmingham (Winson Green), (Rubery Hill), Bristol, Canterbury, Cardiff, Derby, Exeter, Hull, Haywards Heath,* Ipswich, Leicester, Middlesbrough, Newcastle, Norwich, Nottingham, Plymouth, Portsmouth, Sunderland, West Ham. *Hospitals*.—Manchester, Woford, Barnwood,* Albert, Lincoln, St. Luke's St. Andrew's St. Ann's Coppice, Warneford, Coton Hill, Bethlem, Earlswood,* Bootham, The Retreat (York),* Broadmoor, Rampton; Royal Eastern Counties Institution for Idiots (Colchester),* *Metropolitan Asylums Board*.* *Scotland*.—Aberdeen (Kingseat),* Argyll, Ayr, Dumfries,* Edinburgh,* Midlothian, Fife,* Dundee, Montrose, Inverness,* Lanark,* Barony, Glasgow (District), (Royal),* (Woodilee), Govan,* Kirklands, Perth,* Murthly, Roxburgh,* Stirling,* Baldovan. *Ireland*.—Armagh, Ballinasloe, Belfast, Carlow, Castlebar, Clonmel, Cork, Downpatrick,* Ennis, Enniscorthy, Farnham, Kilkenny, Killarney, Letterkenny, Limerick, Londonderry, Maryborough, Monaghan, Mullingar, Omagh, Palmerston, Richmond, St. Patrick's, Sligo, Waterford.

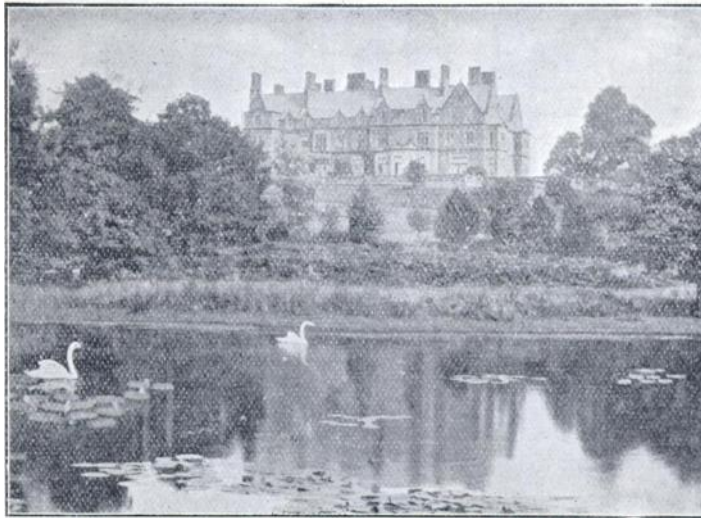
The following Asylum Reports have also come to hand:—Egypt, Cape of Good Hope, Nova Scotia, New Brunswick, Victoria, New York,* Massachusetts Hospital, Ontario, Verdun, Warren, Pennsylvania, Philadelphia Friends, Binghamton, Willard, Northampton, Long View, South Australia, Cleveland, Matteawan,* New South Wales, Agra and Oudh, Assam, Madras, Bengal, Bombay, Central Provinces, Rangoon, Punjab, North-Western Provinces, Tezpur, Mississippi, Pennsylvania Hospital, Washington, Utica, Long Island, Virginia Central, Illinois West, New Hampshire, Butler, Maryland, Pennsylvania West, South Mountain, Manhattan, Indiana East, Connecticut, Carolina N., Dakota N., Ohio, Carthage, Buffalo, Michigan East, Missouri, Alt Scherbitz, Massachusetts Board,* Virginia West, Pennsylvania, Danville, Sheppard and Pratt Hospital, Baltimore, Pennsylvania, Harrisburgs, Pennsylvania, Norristown, Aarhus, Lebanon, Hudson River, Rochester, Taunton, Iowa, Jamaica, Grahamstown, Pretoria, Albany, Tarrytown, Straits Settlements, Lower Austria.

Authors of Original Papers receive 25 reprints of their articles free of cost if application be made on the slips when returning proof. If any *extra* reprints are required, notice should be at the same time sent to the Printers, Messrs. ADLARD & SON & WEST NEWMAN, LTD., 23, Bartholomew Close, London, E.C., who will supply them at a fixed charge. Unless instructions are sent by authors of Papers when the proofs are returned, no copies can be guaranteed.

The copies of the *Journal of Mental Science* are regularly sent by carrier, who in every case obtains a receipt of delivery, to the Ordinary and Honorary Members of the Association. Complaints of non-receipt of the JOURNAL should be sent to Messrs. ADLARD. Any change of address should be intimated to the General Secretary.

BOREATTON PARK.

Founded by the late W. H. O. SANKEY, M.D., F.R.C.P., for the reception of a limited number of ladies and gentlemen mentally afflicted, and now conducted on the same lines by his son, E. H. O. SANKEY, M.A., M B., B.C.Cantab.



The house, a first-class country Mansion, specially adapted for its purpose, stands about 400 ft. above the sea and commands magnificent views of Welsh mountain scenery.

The Gardens slope to the West, and lead to the Deer Park, one of the oldest in the kingdom.

There is fishing both for trout and coarse fish in the pools in the Deer Park, and the right of fishing in about 5 miles of the River Perry is leased.

There are Hot Houses and Orchard House.

Private Golf Course of 18 holes, Tennis Courts, and Croquet Lawns.

So far as possible the patients of both sexes take their meals and associate at all times with the family of the Superintendent, the object being to make the house as much as possible like an ordinary country house.

Arrangements can be made for friends of the Patients to reside in the house should they desire to do so.

There is good stable accommodation, and Horses, Carriages and Motor are provided.

For further particulars apply---

Dr. SANKEY, Boreatton Park, Baschurch, Salop.

Mental or Physical Fatigue



A PARTIALLY PRE-DIGESTED MILK AND WHEATEN FOOD.

When brain or body is weary the digestive powers are weakened and distaste for ordinary food is often experienced. Under such circumstances the "ALLENBURYS" DIET is especially valuable. It is pleasant to take, easily digested and assimilated, and speedily restorative. Thus it helps the system to recover tone and vigour.

By the use of the "ALLENBURYS" DIET all trouble of peptonising milk and farinaceous foods is overcome. In the sick room it will be found extremely useful as the food is easily digested and assimilated, is quickly made, and only the exact quantity required need be prepared at a time.

The "ALLENBURYS" DIET is made from pure, rich milk and whole wheat, both ingredients being partially pre-digested during manufacture. It can be taken by those who cannot digest cow's milk, and provides a light and very nourishing diet for Invalids, Dyspeptics and the Aged.

For travellers by sea or land this complete food will be found exceedingly valuable.

Made in a minute. Add boiling water only.

A Sample with full particulars sent free on request.

ALLEN & HANBURYS Ltd.,
37 Lombard Street, London, E.C.

BORDERLAND PATIENTS.

SOUTH BEACON

**Hadlow Down,
Nr. Uckfield, Sussex.**

ESTABLISHED 1892.

Telegrams: "Hadlow Down."

Station: Buxted (L.B. & S.C.R.)

□
**Outdoor
Occupation
a Speciality.**
□



□
**The usual
Recreations
of a Country
House.**
□

**For the reception of 15 gentlemen requiring
rest and quietness, but who are not
ill enough for certificates.**

Terms from 4 Guineas per week.

Full particulars from :: :: PHILIP H. HARMER.

Now Ready. Crown 8vo. **6s. 6d.** net.

STUTTERING AND LISPING

By E. W. SCRIPTURE, Ph.D., M.D.

THE MEDICAL PRESS.—“Since the publication of Kussmaul's classical work we doubt if anyone has given us anything so practical on speech defects and their remedies as the writer whose book is now under review. The causes, symptoms, diagnosis, and treatment of stuttering are fully dealt with, and the hints on therapeutics are of very special value. . . . This is a thoroughly scientific book on the right lines by an original worker, and its careful perusal will be of infinite service to those who have to treat speech defects in their practice.”

MAGMILLAN & CO., Ltd., London.

ALWAYS USE

REFLEX

FLOOR POLISH.

REQUIRES NO MIXING WHATEVER.

Brilliantly Polishes Floors, Linoleums, Floorcloths, &c.

Economical, Cleanly, Healthful; Maximum of Lustre for Minimum of Labour.

GEO. T. COX & SONS, Ltd.,

81, KING WILLIAM STREET, LONDON BRIDGE, E.C.

This Polish is specially adapted for use in Public Institutions and other large establishments. Samples Free on application.

JOURNAL OF MENTAL SCIENCE.

CONTENTS FOR JULY, 1917.

	Pages
Original Articles.—	
Dr. Hughlings Jackson on Mental Disorders; by Sir George Savage, M.D. —Hallucinations in the Sane; by Robert Hunter Steen, M.D.Lond., M.R.C.P. Lond.—The Psychology of Fear and the Effects of Panic Fear in War Time; by Sir Robert Armstrong-Jones, M.D., F.R.C.P., R.A.M.C.—The Management of Confusional States with Special Reference to Patho- genesis; by Tom A. Williams, M.B., C.M.Edin.	315—400
Clinical Notes and Cases.—	
Some Notes on Battle Psycho-neuroses; by E. Fryer Ballard, Captain R.A.M.C.(T.).	400—405
Reviews.—	
Sixty-fifth Report of the Inspectors of Lunatics (Ireland) for the year ending December 31st, 1915.—Christianity and Sex Problems; by Hugh Northcote, M.A.—Raymond: Or Life and Death; by Sir Oliver Lodge, F.R.S.	405—413
Epitome of Current Literature.—	
1. Physiological Psychology—2. Clinical Neurology and Psychiatry.—3. Sociology.—4. Psychology in Literature.—5. Asylum Reports for 1916	413—434
Notes and News.—	
The Medico-Psychological Association of Great Britain and Ireland.— Northern and Midland Division.—Asylum Workers' Association.—Hostels for Heroes.—Correspondence.—Obituary.—A Correction.—The Library. —Appointment.—Notices by the Registrar.—Notice to Contributors.	435—459

ADLARD AND SON AND WEST NEWMAN, LTD., IMPR., LONDON AND DORKING.