

Lorentz Contact Resonance Imaging for Atomic Force Microscopes: Probing Mechanical and Thermal Properties on the Nanoscale

Eoghan Dillon,* Kevin Kjoller, and Craig Prater

Anasys Instruments, 325 Chapala Street, Santa Barbara, CA 93101

*eoghan@anasysinstruments.com

Introduction

Atomic force microscopy (AFM) has been widely used in both industry and academia for imaging the surface topography of a material with nanoscale resolution. However, often little other information is obtained. Contact resonance AFM (CR-AFM) is a technique that can provide information about the viscoelastic properties of a material in contact with an AFM probe by measuring the contact stiffness between the probe and sample. In CR-AFM, an AFM cantilever is oscillated, and the amplitude and frequency of the resonance modes of the cantilever are monitored [1]. When a probe or sample is oscillated, the tip sample interaction can be approximated as an ideal spring-dashpot system using the Voigt-Kelvin model [2] shown in Figure 1. Contact resonance frequencies of the AFM cantilever will shift depending on the contact stiffness, k , between the tip and sample. The damping effect on the system comes from dissipative tip sample forces such as viscosity and adhesion. Damping, η , is observed in a CR-AFM system by monitoring the amplitude and Q factor of the resonant modes of the cantilever. This contact stiffness and damping information can then be used to obtain information about the viscoelastic properties of the material when fit to an applicable model.

In CR-AFM there are several methods for generating an oscillation in a cantilever, including ultrasonic AFM [3] and atomic force acoustic microscopy [4]. In these methods the oscillation is driven by a piezo, either behind the cantilever or under the sample; however, when oscillations are driven by a piezo there are often many spurious resonances from the piezo itself. This article describes Lorentz contact resonance AFM (LCR-AFM), a new technique that allows monitoring

of contact resonances, between a ThermoLever™ AFM probe and a sample, without the spurious resonances associated with piezo-driven systems (see Figure 2).

Lorentz Contact Resonance Mode

Lorentz contact resonance mode is an AFM imaging mode, available on all Anasys Instruments AFM systems, that allows the user to image the surface of a sample with image contrast derived from the relative stiffness of each component within the sample. Furthermore, the contact resonance modes of the AFM cantilever can be monitored using Analysis Studio™ software. As the name suggests, the drive mechanism in LCR-AFM is based on an oscillating Lorentzian force [5]. When a magnetic field interacts perpendicularly with a current in a wire, a force is generated that is perpendicular to both the current and magnetic field. If an alternating current is applied, then the force occurs in two directions, generating an oscillation in the cantilever (Figure 3).

Using the sweep control panel in the Analysis Studio software, the user can vary the frequency of the A/C drive signal sent down the cantilever over a wide range, 1 kHz–4 MHz (shown in Figure 4). When the frequency is swept, the resulting nanomechanical spectrum indicates the frequency and amplitude of each of the contact resonance modes of the ThermoLever cantilever. The large frequency sweep range allows for probing a wide range of sample stiffness with a single cantilever. This technique is made possible by the use of ThermoLever cantilevers, which are batch-fabricated AFM cantilevers composed of doped silicon. The two-legged design of these cantilevers provides a path for flowing the alternating current required for the generation of the Lorentzian force.

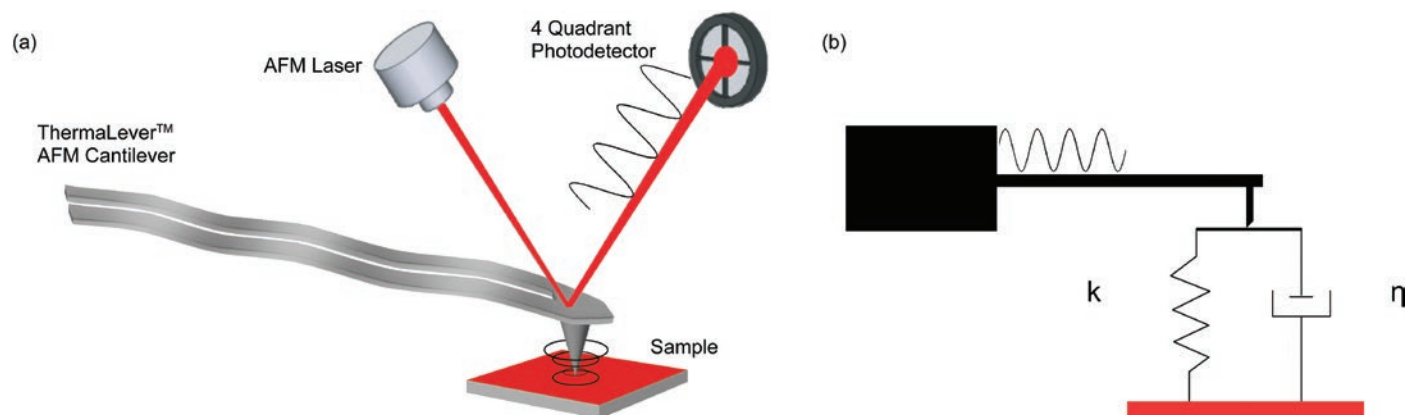


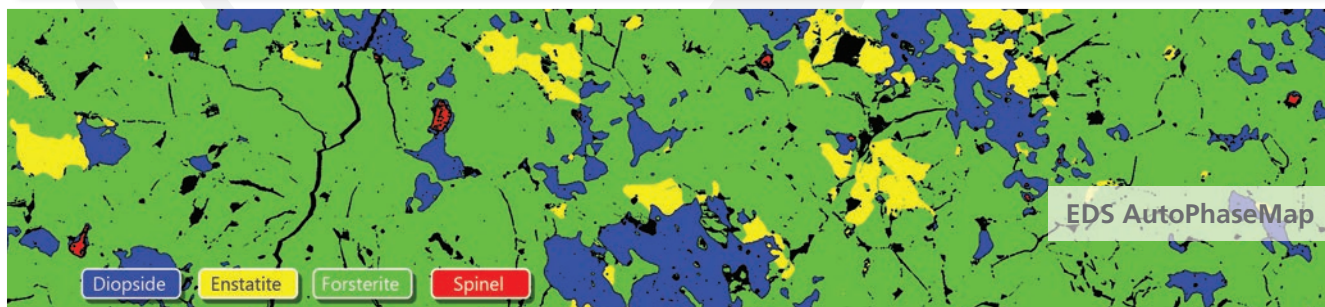
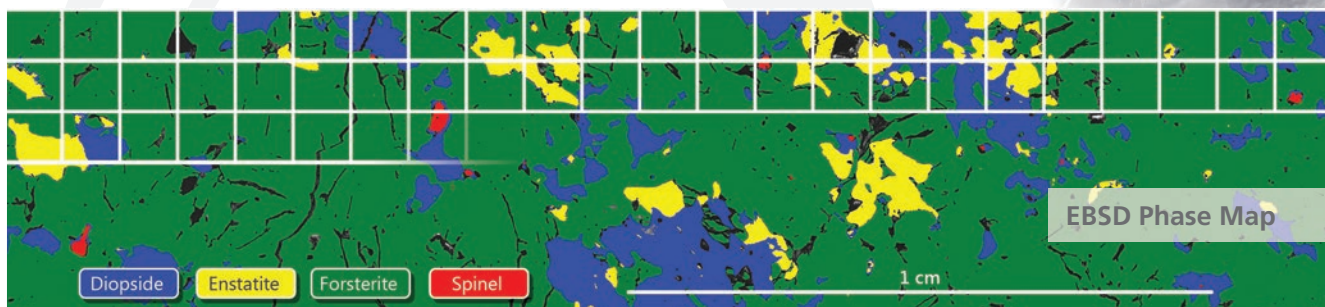
Figure 1: (a) Schematic representation of contact frequency detection. The AFM laser monitors the deflection of the cantilever, and after signal processing, the frequency of oscillation of the AFM cantilever is obtained. (b) Schematic representation of the Voigt-Kelvin model for contact resonance, where k is the contact stiffness of the tip sample interaction, influenced by the stiffness of the sample surface, and η is the damping coefficient, influenced by the adhesion and viscosity.

AZtec[®] Large Area Mapping

See the big picture in nanoanalysis!

AZtec makes the unattended collection of large area maps routine.

- Collect high resolution EDS & EDS data simultaneously
- Automatic field alignment seamlessly combines the individual fields into one huge dataset
- Process the large area data with the full range of EBSD and EDS analysis tools
- See the distribution of major phases on the millimetre scale *and* minor phases on the micrometre scale



Map montage covering 138 fields over a peridotite mantle xenolith. Sample courtesy University of Otago.

To see the demonstration, please visit:
www.oxford-instruments.com/AZtecLAM



The Business of Science[®]

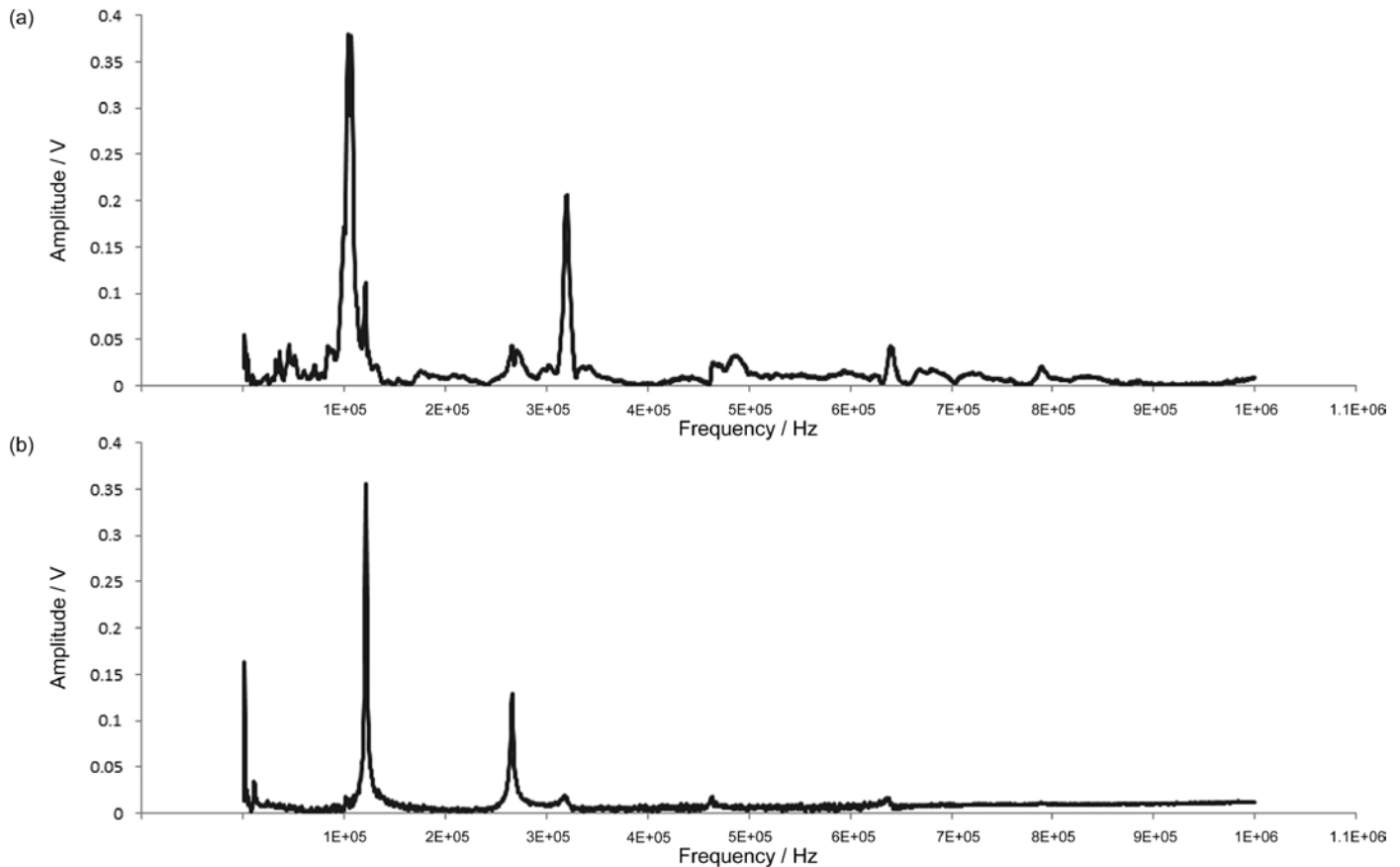


Figure 2: (a) CR-AFM spectrum acquired using a piezo-driven ThermoLever AFM cantilever (many parasitic resonances). (b) CR-AFM spectrum acquired using a LCR-driven ThermoLever AFM cantilever.

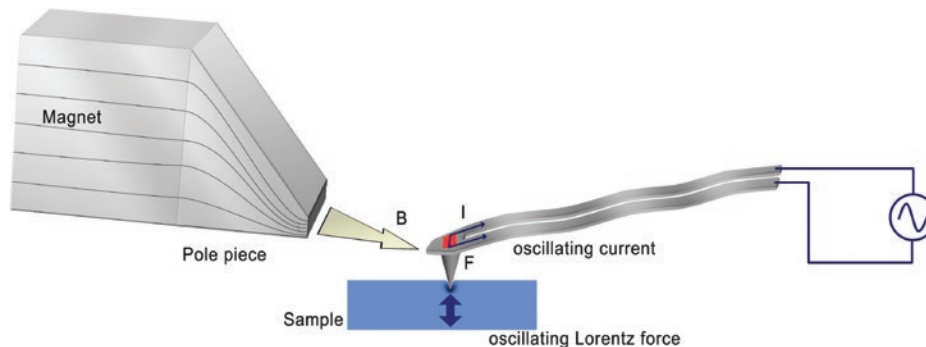


Figure 3: A schematic representation of how the LCR drive works. The perpendicular interaction of the magnetic field and the alternating current flowing through the cantilever induces an oscillation in the cantilever due to the Lorentzian forces that are generated.

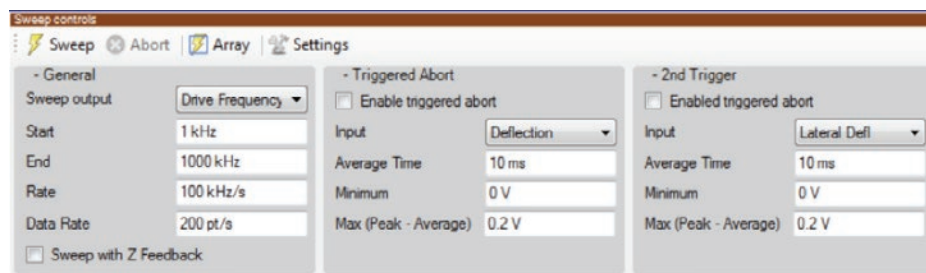


Figure 4: The sweep control panel in the Analysis Studio™ software, where the user can control the start and end frequency as well as the sweep rate of the AC frequency through the ThermoLever cantilever.

Furthermore, these ThermoLever cantilevers have a resistive heater element integrated into the end of the cantilever, allowing controlled heating of the probe when direct current is supplied, to a maximum temperature of $\sim 400^{\circ}\text{C}$.

Results

Polymer blend. Today's polymer blends are more complex than ever, leading to challenges in characterizing the distribution of components in the blend. Figure 5 shows a typical AFM height image of a three-component polymer blend. The only information obtained from such topographical images is of the overall morphology of the sample surface.

The distribution of domains within a polymer blend greatly affects the overall performance of the polymer. Although conventional AFM can provide a topographical image of a polymer blend, the blend distribution cannot be determined. Although phase imaging can sometimes differentiate between different materials, the contrast derived from phase imaging is based

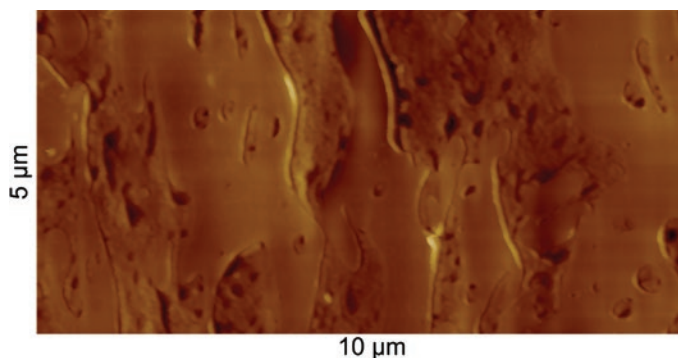


Figure 5: AFM topographical image of a three-component polymer blend.

on a number of factors, including friction, viscosity, and adhesion. The LCR-AFM mode provides contrast based on the contact stiffness between the tip and sample, allowing for the differentiation of materials with similar stiffness that may not be clearly observed by phase imaging.

Figure 6 shows the nanomechanical spectra for each component of the three-component polymer blend, acquired by first placing the probe on one component, sweeping the drive frequency to the probe, and monitoring the cantilever contact resonances. As shown in the spectra of Figure 6, the contact resonant frequency of the elastomer is shifted farthest left, indicating it is the softest material. Although the polycarbonate and polypropylene do not display large shifts in contact frequency, because they have similar Young's moduli, they can still be differentiated by their contact resonance amplitudes, that is, different dissipation properties.

Once these different components have been identified by nanomechanical spectroscopy, it is then possible to image each component individually. This is achieved by tuning the drive

signal to the ThermoLever cantilever to an observed contact resonance frequency for a material and collecting an LCR-AFM amplitude image. Figure 7 shows images of the individual components in this polymer blend along with an RGB overlay image, displaying the individual domains of each component in a single image.

One additional benefit of LCR imaging is that it allows for enhanced positioning of the ThermoLever for subsequent nanoTA measurements. Figure 8a shows an LCR-AFM image with three measurement locations on polypropylene and three on polycarbonate. The thermal analyses of Figure 8b show a distinct thermal transition for each polymer component.

Multilayer film. Multilayer films are key materials in the packaging industry. These multilayer films may have many layers of different materials with vastly different mechanical and thermal properties to provide optimum performance. Quality control and characterization of these manufactured multilayer films is important; interior layers of these films may be damaged or altered during the film forming process.

The LCR-AFM mode provides the ability to characterize the relative mechanical properties of all the layers of a preformed film along with corresponding thermal properties (T_g or T_m). Sample preparation for this example is a simple process of embedding the multilayer film in epoxy and exposing a smooth cross-sectioned surface via microtoming. Figure 9a shows an AFM topographic image of an 8-layer film, where color-coded markings on the image indicate the positioning of the ThermoLever probe for subsequent nanomechanical spectroscopy measurements. Figure 9b shows nanomechanical spectra of each layer indicating the relative stiffness. This allows easy monitoring of layer ordering, based on the expected relative stiffnesses. Nanomechanical spectroscopy may also indicate unwanted changes in the mechanical properties of each layer during the film forming process.

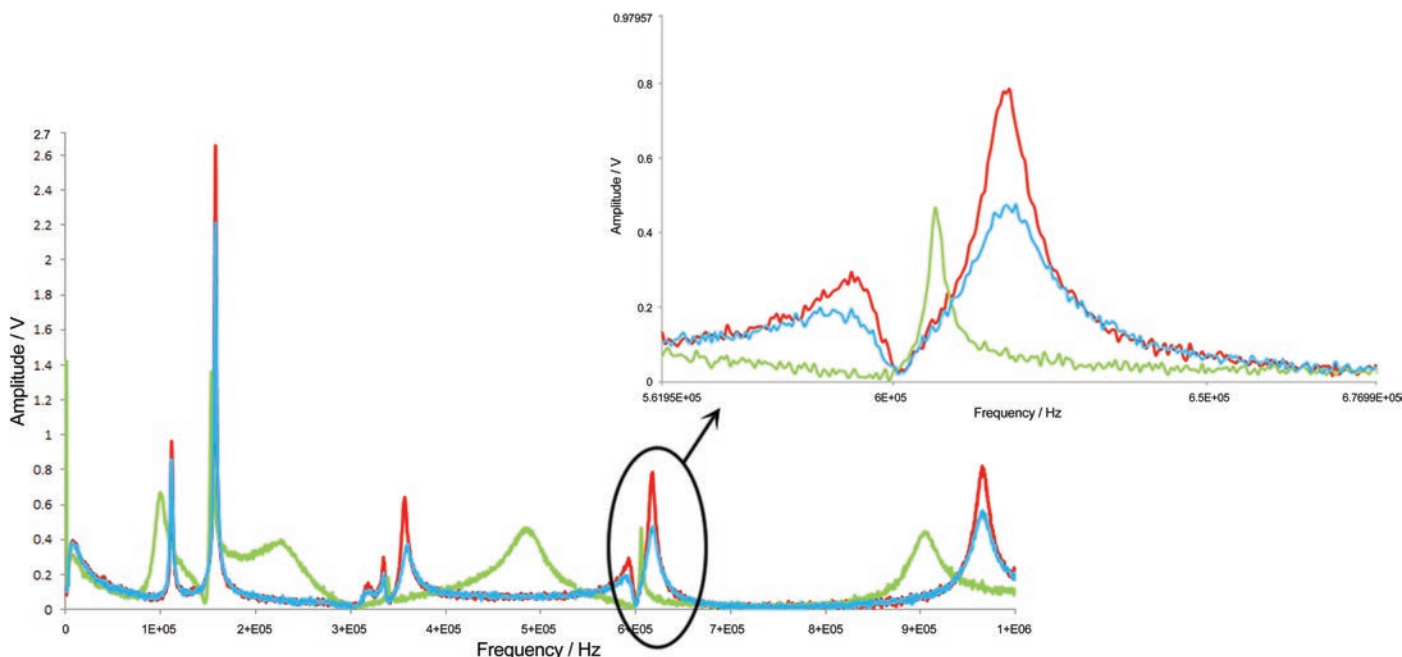


Figure 6: Nanomechanical spectra of elastomer (green), polycarbonate (red), and polypropylene (blue). Each peak in the spectrum represents a contact resonance mode of the cantilever. The frequency and amplitude of each peak indicate the relative stiffness of each area probed, with softer materials appearing at lower frequencies.

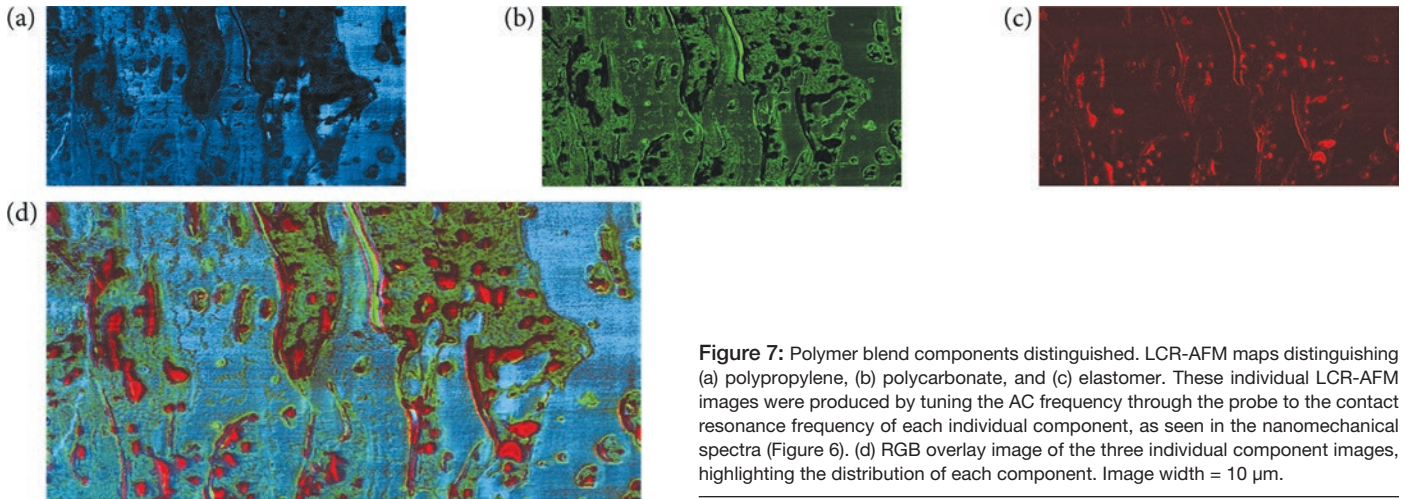


Figure 7: Polymer blend components distinguished. LCR-AFM maps distinguishing (a) polypropylene, (b) polycarbonate, and (c) elastomer. These individual LCR-AFM images were produced by tuning the AC frequency through the probe to the contact resonance frequency of each individual component, as seen in the nanomechanical spectra (Figure 6). (d) RGB overlay image of the three individual component images, highlighting the distribution of each component. Image width = 10 μm .

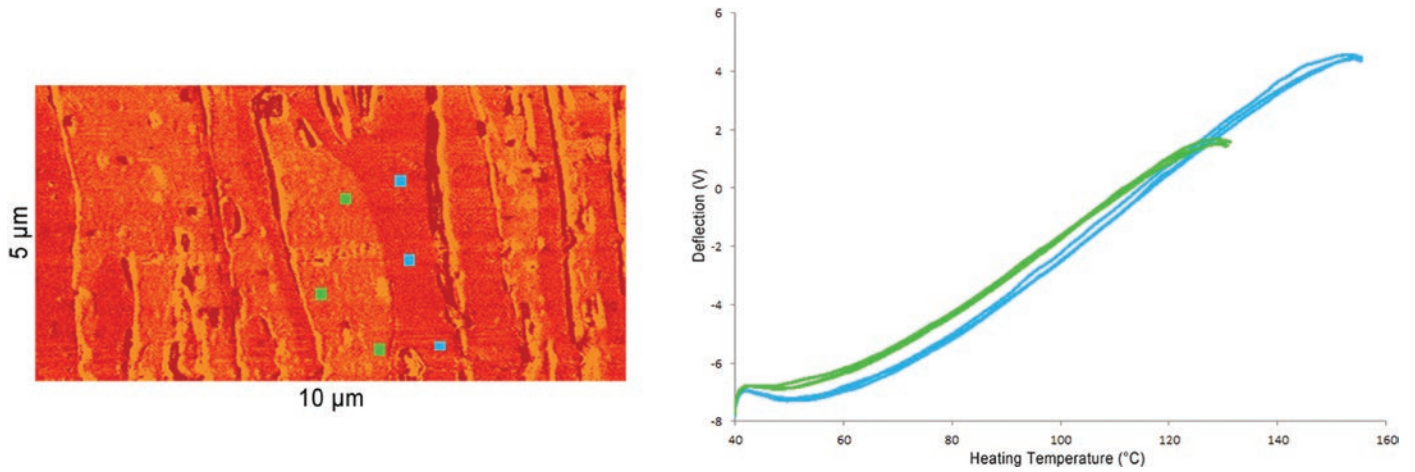


Figure 8: (a) LCR-AFM image of three-component polymer blend. (b) nanoTA data for two of the components (green: polypropylene and blue: polycarbonate), indicating the onset of glass transition or melt temperature for each component within the polymer blend with nanoscale spatial resolution (polypropylene: 129°C and polycarbonate: 153°C).

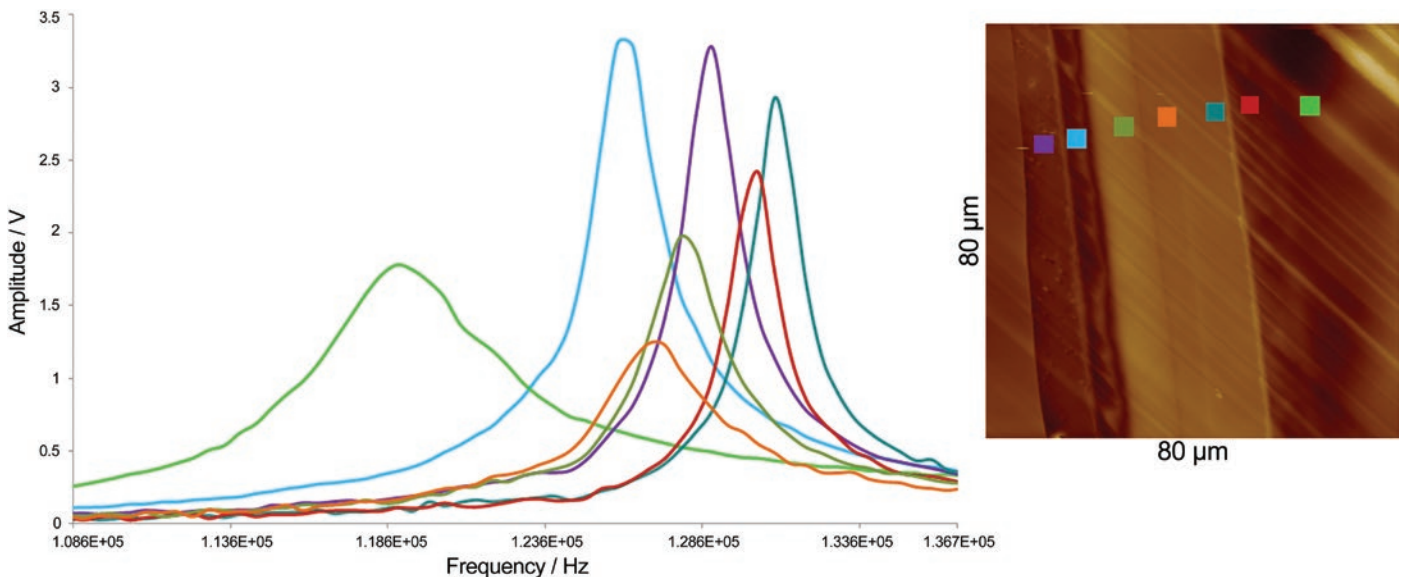


Figure 9: (a) AFM topography image of the sectioned multilayer film. (b) Nanomechanical spectra for each individual layer within the multilayer film obtained by sweeping the frequency of the AC voltage flowing down the cantilever and recording the contact resonance frequencies for each component. The lower the contact frequency, the softer the layer being probed. Image width = 80 μm .

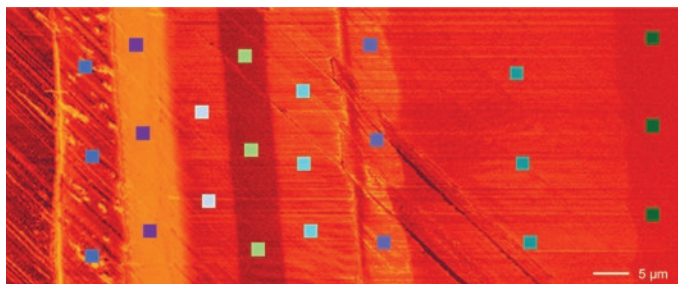


Figure 10: Measurements on a multi-layer polymer film. LCR-AFM image highlighting layer boundaries (markers indicate positions for subsequent nanoTA measurements).

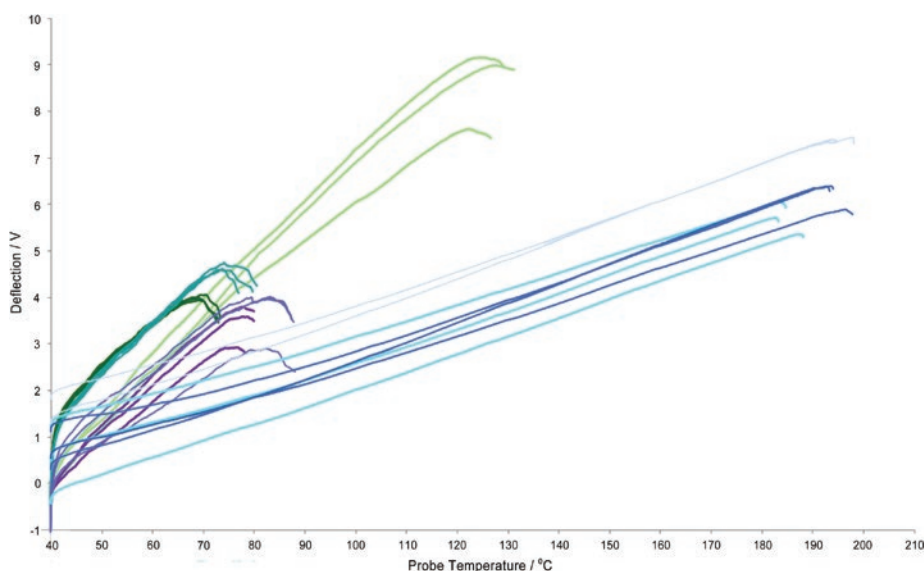


Figure 11: Local thermal analysis by nanoTA indicates the thermal transitions (glass or melt) for each layer within the multilayer film (color indicates position of measurement in 9a). The deflection of the AFM probe is monitored, with the penetration of the probe into the sample indicating the onset of the thermal transition.

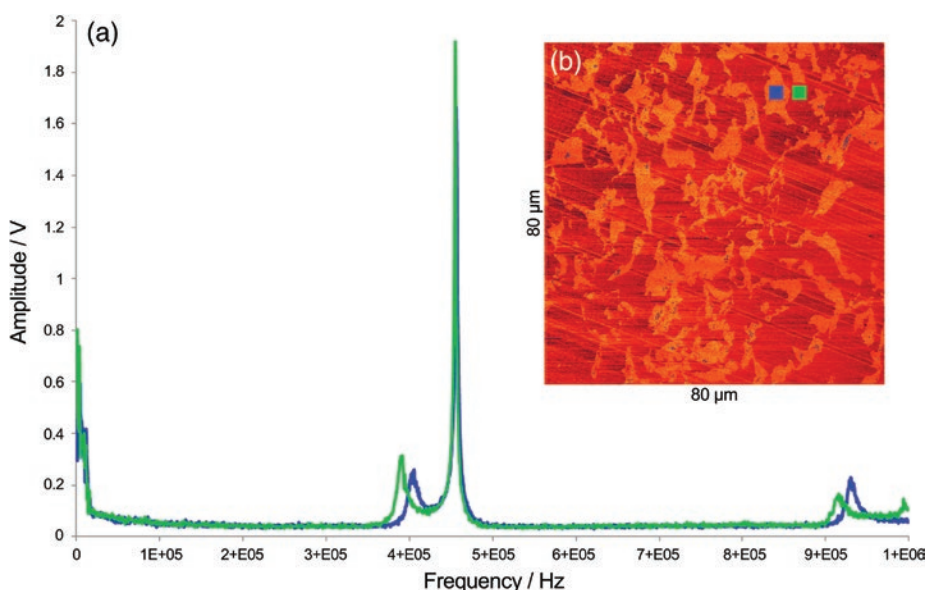


Figure 12: Dispersion of carbon nanomaterials in a polymer matrix. (a) Nanomechanical spectra of aggregated carbon material (blue) and surrounding polymer matrix (green) with spectra indicating the relative stiffness of each domain. (b) Corresponding LCR-AFM amplitude image for composite 1. Image width = 80 μm .

Figures 10 and 11 show thermal analysis measurements on the same material. Figure 10 shows that the boundary between layers is clearly defined, allowing accurate measurements of the thickness of each layer. The thickness of each layer can play an important role in the overall performance of the film. Currently these multilayer films are peeled apart and examined using bulk thermal analysis techniques such as differential scanning calorimetry (DSC), a labor- and time-intensive process. As previously mentioned, ThermoLever probes have a resistive heating element integrated into the end of the cantilever, allowing for controlled heating of the probe. The tool allows for the determination of thermal transitions (T_g or T_m) by monitoring the deflection of the AFM cantilever. The sample

will expand during heating, causing a change in deflection of the cantilever. The probe will then penetrate into the sample when a transition occurs, resulting in a change in cantilever deflection. Figure 11 shows nanoTA results that identify the thermal transitions for each layer in the film without the need for laborious sample preparation.

Carbon nanomaterials in a polymer matrix.

The dispersion of a component in a polymer matrix plays a key role in the performance of a composite. When working with nanocomposites, one of the most important factors influencing the performance of the composite is the mixing conditions. When poor mixing is used, the resulting blend may have multiple defect sites that could lead to a catastrophic failure of the product. The most commonly used techniques for the characterization of dispersion are a combination of X-ray diffraction (XRD) with scanning electron microscopy (SEM) or transmission electron microscopy (TEM). Both of these imaging techniques have significant drawbacks. With TEM, the sample must be very thin to allow for the transmission of the electron beam; whereas, SEM analysis usually requires the sample to be conductive, which is generally not the case with most polymer nanocomposites. In sample preparation for SEM analysis of nanocomposites, cryofracturing is a commonly used method; however, the nanocomposite is most likely to fracture in weak areas where the dispersion may be poor. This may lead to an inaccurate characterization of the dispersion.

The LCR-AFM mode allows the user to probe the distribution of components in a polymer matrix by imaging each component individually, with image contrast usually caused by the differing viscoelastic properties of the components.

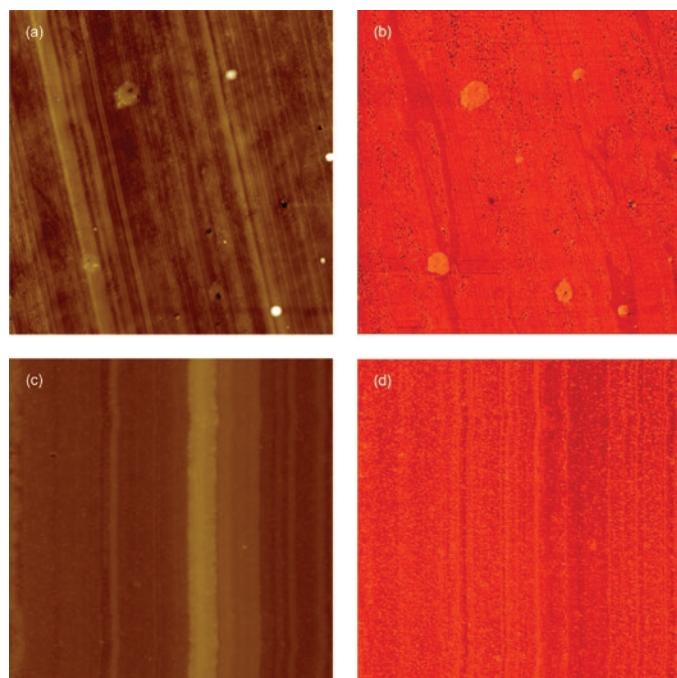


Figure 13: Comparison of nanocarbon composites prepared under different mixing conditions. (a) AFM topography image of composite 2, with round regions being large aggregates of nanomaterial. (b) LCR-AFM image of composite 2. (c) AFM topography image of composite 3. (d) LCR-AFM image of composite 3, with the fine granularity indicating good dispersion. (Banding in the images is caused by the microtome blade.) Image width = 20 μm .

In the example shown in Figure 12, the dispersion of a carbon nanomaterial in a polymer matrix was monitored. Various mixing conditions were applied, and the resulting composites (1, 2, and 3) were analyzed using the *afm+*TM system (Anasys Instruments). Figure 12 shows that the mixing conditions used in the preparation of composite 1 resulted in the aggregation of the carbon nanomaterial. The nanomechanical spectra indicate the aggregated carbon domains are significantly stiffer than the surrounding matrix.

Figure 13 shows LCR-AFM imaging results for two additional sets of nanocarbon composites that were prepared with different mixing conditions. As can be seen from Figure 13b, composite 2 contains regions of good dispersion, some aggregation, and no dispersion at all. The detection of regions of no carbon dispersion is important and may not have been discovered using the cryofracture SEM technique because the components would most likely fracture in this region. The LCR-AFM image of composite 3, Figure 13d, shows good dispersion of the carbon nanomaterial within the matrix.

Conclusions

Lorentz contact resonance AFM provides an enhanced ability to characterize various types of polymeric samples when compared to conventional AFM. Phase imaging in AFM is limited by a number of factors that influence the contrast achieved during phase imaging, including adhesion and viscosity. The ability of LCR-AFM to tune the probe oscillation in an Anasys Instruments system to the contact resonance frequency for a particular component gives image contrast

based only on stiffness. This is a significant advancement over phase imaging because it can differentiate materials with similar stiffness where phase imaging cannot. The combination in the nanoIRTM instrument of LCR-AFM, nanoTA, and AFM-IR provides the user with a multifunctional tool capable of characterizing a sample topographically, thermally, and chemically with high spatial resolution.

Acknowledgments

The authors would like to thank Dr. Greg Myers from Dow Chemical Company for providing a three-component polymer blend sample and Dr. Sayantan Roy at Baker Hughes Inc. for providing the nano-carbon composite materials.

References

- [1] P Yuya, D Hurley, and J Turner, *J Appl Phys* 104 (2008) 074916–22.
- [2] J Turner, S Hirsekorn, U Rabe, and W Arnold, *J Appl Phys* 82 (1997) 966–79.
- [3] K Yamanaka, Y Maruyama, T Tsuji, and K Nakamoto, *Appl Phys Lett* 78 (2001) 1939–41.
- [4] U Rabe, M Kopycinska, S Hirsekorn, J Saldana, G Schneider, and W Arnold, *J Phys D: Appl Phys* 35 (2002) 2621–35.
- [5] B Lee, C Prater, and W King, *Nanotechnology* 23 (2012) 55709–16.

MT

Minus K[®] Technology's Negative-Stiffness vibration isolators have been selected for ground testing of the James Webb Space Telescope (JWST).



Why have over 2,000 scientists in 43 countries selected Minus K[®] vibration isolators?

Our Negative Stiffness systems deliver
10x to 100x better performance than air
systems and even better than active systems



Without Minus K[®]



With Minus K[®]

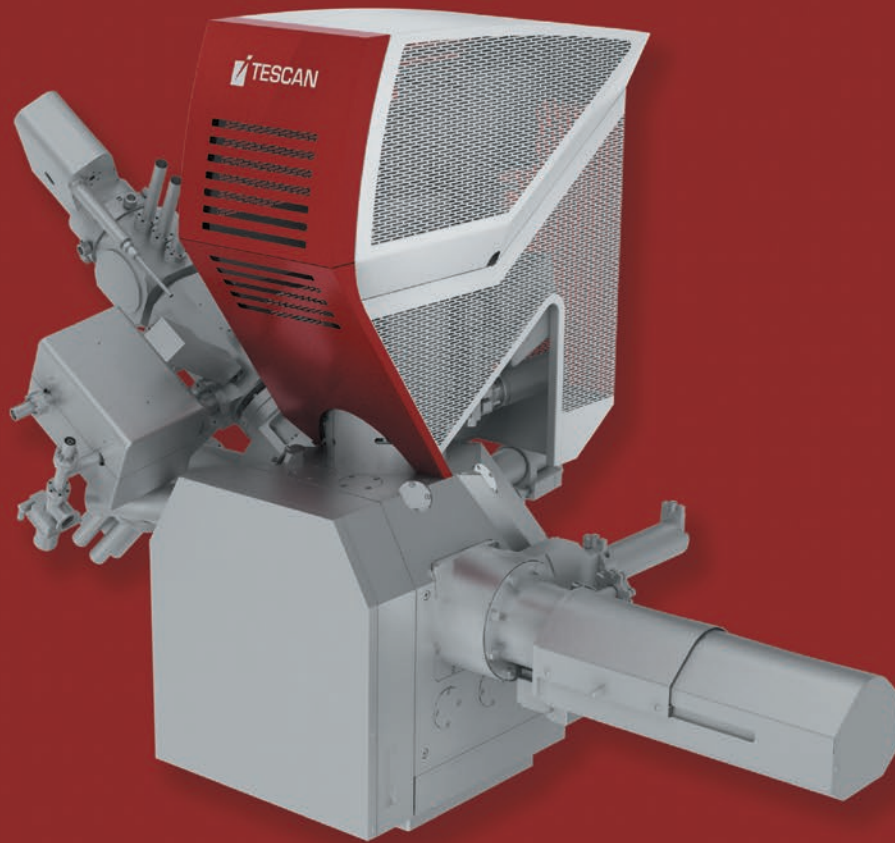
The best performance *and* the lowest price.
That's hard to beat!



460 Hindry Ave., Unit C, Inglewood, CA 90301
Tel: 310-348-9656 Fax: 310-348-9638
sales@minusk.com • www.minusk.com

Mention code MT0913 to get a 5% discount on our standard bench top or SM models

Are you pushing the envelope?



**The LYRA GM FIB-SEM workstation
is the most recent FIB-SEM workstation offering from TESCAN.
Designed for simultaneous EDS, WDS, EBSD and TOF SIMS while milling.**

**Contact us and find out why
more and more researchers are choosing TESCAN.**

- *Thermionic Scanning Electron Microscopes
- *Field Emission Scanning Electron Microscopes
- *FIB-SEM Workstations
- *FIB-SEM Time of Flight Integration
- *Plasma FIB-SEM Workstations



**www.tescan.com
www.tescan-usa.com**

TESCAN USA, 508 Thomson Park Drive, Cranberry Twp., PA 16066, Tel: 724-772-7433, Email: info@tescan-usa.com